

Data Path : Z:\voasrv\HPCHEM1\MSVOA\_W\Data\VW071522\  
 Data File : VW023770.D  
 Acq On : 16 Jul 2022 01:43  
 Operator : SY/VA  
 Sample : VW0715SBL02  
 Misc : 5.00g/10mL/MSVOA\_W/SOIL  
 ALS Vial : 1 Sample Multiplier: 1

Instrument :  
 MSVOA\_W  
 ClientSampleId :  
 VBLK549

Integration Parameters: LSCINT.P

Integrator: RTE  
 Smoothing : OFF  
 Sampling : 1  
 Start Thrs: 0.2  
 Stop Thrs : 0

Filtering: 5  
 Min Area: 0 % of largest Peak  
 Max Peaks: 100  
 Peak Location: TOP

If leading or trailing edge < 100 prefer < Baseline drop else tangent >  
 Peak separation: 5

Method : Z:\voasrv\HPCHEM1\MSVOA\_W\Method\SFAMWLM071322SMA.M  
 Title : SFAM01.0

Signal : TIC: VW023770.D\data.ms

peak #	R.T. min	first scan	max scan	last scan	PK TY	peak height	corr. area	corr. % max.	% of total
1	2.343	67	72	80	rBV	135945	214993	30.17%	4.033%
2	3.611	278	280	282	rBV3	1118	1302	0.18%	0.024%
3	3.824	313	315	317	rBV3	1288	890	0.12%	0.017%
4	4.007	336	345	358	rBV3	58504	180326	25.30%	3.382%
5	4.769	465	470	472	rBV6	1790	3283	0.46%	0.062%
6	5.025	510	512	513	rBV2	1332	1147	0.16%	0.022%
7	5.105	521	525	526	rBV4	2233	2961	0.42%	0.056%
8	5.312	557	559	562	rBV4	1834	2178	0.31%	0.041%
9	5.629	608	611	613	rVB4	1362	1534	0.22%	0.029%
10	5.672	616	618	620	rBV3	1251	1061	0.15%	0.020%
11	5.696	620	622	625	rBV4	1316	1597	0.22%	0.030%
12	5.739	627	629	630	rBV2	1501	840	0.12%	0.016%
13	6.092	685	687	689	rVB3	1249	930	0.13%	0.017%
14	6.141	693	695	700	rVB5	1902	2105	0.30%	0.039%
15	6.196	703	704	706	rBV2	1127	986	0.14%	0.018%
16	6.251	711	713	716	rBV4	946	1187	0.17%	0.022%
17	6.281	716	718	722	rVB5	1397	1694	0.24%	0.032%
18	6.312	722	723	724	rBV	1019	678	0.10%	0.013%
19	6.464	746	748	750	rBV3	1145	1087	0.15%	0.020%
20	6.488	750	752	753	rBV2	911	747	0.10%	0.014%
21	6.720	789	790	793	rVB3	1212	763	0.11%	0.014%
22	6.927	822	824	825	rBV2	1167	815	0.11%	0.015%
23	7.074	839	848	854	rBV	19719	53306	7.48%	1.000%
24	7.641	933	941	956	rVB	118966	296777	41.64%	5.567%
25	7.854	975	976	977	rBV	1228	740	0.10%	0.014%
26	7.952	988	992	996	rVB7	1954	3684	0.52%	0.069%
27	8.019	1001	1003	1006	rBV3	1033	1005	0.14%	0.019%
28	8.080	1011	1013	1015	rBV3	1407	1095	0.15%	0.021%
29	8.116	1018	1019	1024	rVB5	1538	2321	0.33%	0.044%
30	8.171	1024	1028	1029	rBV4	1505	1869	0.26%	0.035%
31	8.269	1035	1044	1059	rBV2	232738	712719	100.00%	13.369%
32	8.769	1124	1126	1128	rBV3	1293	1219	0.17%	0.023%
33	8.842	1129	1138	1148	rVV	218729	439809	61.71%	8.250%
34	9.043	1170	1171	1172	rBV	1194	698	0.10%	0.013%
35	9.061	1172	1174	1176	rVV3	1807	1922	0.27%	0.036%
36	9.201	1193	1197	1199	rBV4	1278	1679	0.24%	0.031%

Data Path : Z:\voasrv\HPCHEM1\MSVOA\_W\Data\VW071522\  
 Data File : VW023770.D  
 Acq On : 16 Jul 2022 01:43  
 Operator : SY/VA  
 Sample : VW0715SBL02  
 Misc : 5.00g/10mL/MSVOA\_W/SOIL  
 ALS Vial : 1 Sample Multiplier: 1

Instrument :  
 MSVOA\_W  
 ClientSampleId :  
 VBLK549

Integration Parameters: LSCINT.P

Integrator: RTE  
 Smoothing : OFF  
 Sampling : 1  
 Start Thrs: 0.2  
 Stop Thrs : 0

Filtering: 5  
 Min Area: 0 % of largest Peak  
 Max Peaks: 100  
 Peak Location: TOP

If leading or trailing edge < 100 prefer < Baseline drop else tangent >  
 Peak separation: 5

Method : Z:\voasrv\HPCHEM1\MSVOA\_W\Method\SFAMWLM071322SMA.M  
 Title : SFAM01.0

37	9.268	1201	1208	1219	rVV	162666	335073	47.01%	6.285%
38	9.506	1245	1247	1249	rBV3	1039	749	0.11%	0.014%
39	9.537	1249	1252	1255	rBV5	1159	1758	0.25%	0.033%
40	9.598	1259	1262	1263	rBV3	1316	968	0.14%	0.018%
41	9.628	1266	1267	1270	rBV2	1229	1307	0.18%	0.025%
42	10.031	1327	1333	1340	rBV	79310	138005	19.36%	2.589%
43	10.195	1358	1360	1364	rBV4	1582	1987	0.28%	0.037%
44	10.323	1373	1381	1389	rBV	326364	588954	82.63%	11.047%
45	10.579	1417	1423	1430	rVB	52643	91868	12.89%	1.723%
46	10.701	1437	1443	1451	rVB2	19422	36787	5.16%	0.690%
47	10.854	1462	1468	1472	rBV7	2090	4679	0.66%	0.088%
48	10.921	1472	1479	1492	rVV	87296	150412	21.10%	2.821%
49	11.061	1497	1502	1508	rVV2	29836	50877	7.14%	0.954%
50	11.171	1517	1520	1524	rVB4	2524	3839	0.54%	0.072%
51	11.360	1549	1551	1553	rBV3	1019	1158	0.16%	0.022%
52	11.390	1553	1556	1557	rVV2	1844	1910	0.27%	0.036%
53	11.433	1559	1563	1571	rVB3	8878	15693	2.20%	0.294%
54	11.628	1585	1595	1604	rBV	358770	591497	82.99%	11.095%
55	11.823	1625	1627	1629	rBV3	1463	1473	0.21%	0.028%
56	11.951	1646	1648	1652	rBV5	1163	1588	0.22%	0.030%
57	12.152	1678	1681	1682	rBV3	1102	1113	0.16%	0.021%
58	12.329	1707	1710	1714	rVB6	1814	2544	0.36%	0.048%
59	12.420	1724	1725	1727	rBV2	931	810	0.11%	0.015%
60	12.518	1739	1741	1745	rVB5	1303	1566	0.22%	0.029%
61	12.603	1750	1755	1762	rVB2	15816	25483	3.58%	0.478%
62	12.689	1762	1769	1778	rBV	143477	236126	33.13%	4.429%
63	12.811	1788	1789	1790	rBV	1154	843	0.12%	0.016%
64	12.926	1805	1808	1812	rBV4	3400	5396	0.76%	0.101%
65	13.152	1841	1845	1847	rBV5	723	943	0.13%	0.018%
66	13.243	1856	1860	1862	rBV4	1308	1409	0.20%	0.026%
67	13.262	1862	1863	1864	rBV	1114	719	0.10%	0.013%
68	13.365	1877	1880	1882	rBV2	928	1334	0.19%	0.025%
69	13.390	1882	1884	1885	rBV2	924	750	0.11%	0.014%
70	13.481	1897	1899	1901	rVV3	1320	1429	0.20%	0.027%
71	13.554	1905	1911	1921	rVV	337446	532862	74.76%	9.995%
72	13.853	1952	1960	1967	rBV	295263	499870	70.14%	9.376%
73	14.066	1990	1995	2000	rVB4	6284	9913	1.39%	0.186%
74	14.170	2010	2012	2015	rBV4	826	1135	0.16%	0.021%
75	14.237	2021	2023	2024	rBV2	1285	888	0.12%	0.017%
76	14.322	2032	2037	2038	rBV5	1988	2934	0.41%	0.055%

Data Path : Z:\voasrv\HPCHEM1\MSVOA\_W\Data\VW071522\  
 Data File : VW023770.D  
 Acq On : 16 Jul 2022 01:43  
 Operator : SY/VA  
 Sample : VW0715SBL02  
 Misc : 5.00g/10mL/MSVOA\_W/SOIL  
 ALS Vial : 1 Sample Multiplier: 1

Instrument :  
 MSVOA\_W  
 ClientSampleId :  
 VBLK549

Integration Parameters: LSCINT.P

Integrator: RTE  
 Smoothing : OFF                   Filtering: 5  
 Sampling : 1                        Min Area: 0 % of largest Peak  
 Start Thrs: 0.2                    Max Peaks: 100  
 Stop Thrs : 0                      Peak Location: TOP

If leading or trailing edge < 100 prefer < Baseline drop else tangent >  
 Peak separation: 5

Method : Z:\voasrv\HPCHEM1\MSVOA\_W\Method\SFAMWLM071322SMA.M  
 Title : SFAM01.0

77	14.481	2059	2063	2064	rBV3	1858	2330	0.33%	0.044%
78	14.566	2075	2077	2080	rVB3	1510	1356	0.19%	0.025%
79	14.627	2080	2087	2089	rBV7	2835	6303	0.88%	0.118%
80	14.725	2101	2103	2107	rBV4	1588	1512	0.21%	0.028%
81	14.761	2107	2109	2113	rVB4	1062	1313	0.18%	0.025%
82	14.798	2113	2115	2116	rBV2	1204	743	0.10%	0.014%
83	14.914	2130	2134	2137	rBV5	1388	2216	0.31%	0.042%
84	15.036	2151	2154	2156	rVB3	1089	935	0.13%	0.018%
85	15.097	2159	2164	2165	rBV4	1326	2014	0.28%	0.038%
86	15.121	2165	2168	2169	rBV3	1777	1718	0.24%	0.032%
87	15.182	2175	2178	2180	rVB4	1034	1187	0.17%	0.022%
88	15.206	2180	2182	2183	rBV3	949	994	0.14%	0.019%
89	15.426	2216	2218	2222	rVB4	2453	2726	0.38%	0.051%
90	15.554	2234	2239	2243	rVV7	2605	4647	0.65%	0.087%
91	15.639	2248	2253	2254	rBV5	1330	1500	0.21%	0.028%
92	15.749	2268	2271	2272	rBV3	731	692	0.10%	0.013%
93	15.786	2275	2277	2279	rBV2	1222	805	0.11%	0.015%
94	15.810	2279	2281	2284	rVB2	836	797	0.11%	0.015%
95	15.914	2295	2298	2299	rBV3	1456	1836	0.26%	0.034%
96	16.017	2312	2315	2317	rBV3	2166	2369	0.33%	0.044%
97	16.060	2321	2322	2323	rBV	1106	747	0.10%	0.014%
98	16.170	2338	2340	2342	rVB2	787	631	0.09%	0.012%
99	16.249	2351	2353	2355	rBV3	960	632	0.09%	0.012%
100	16.365	2370	2372	2374	rBV3	763	642	0.09%	0.012%

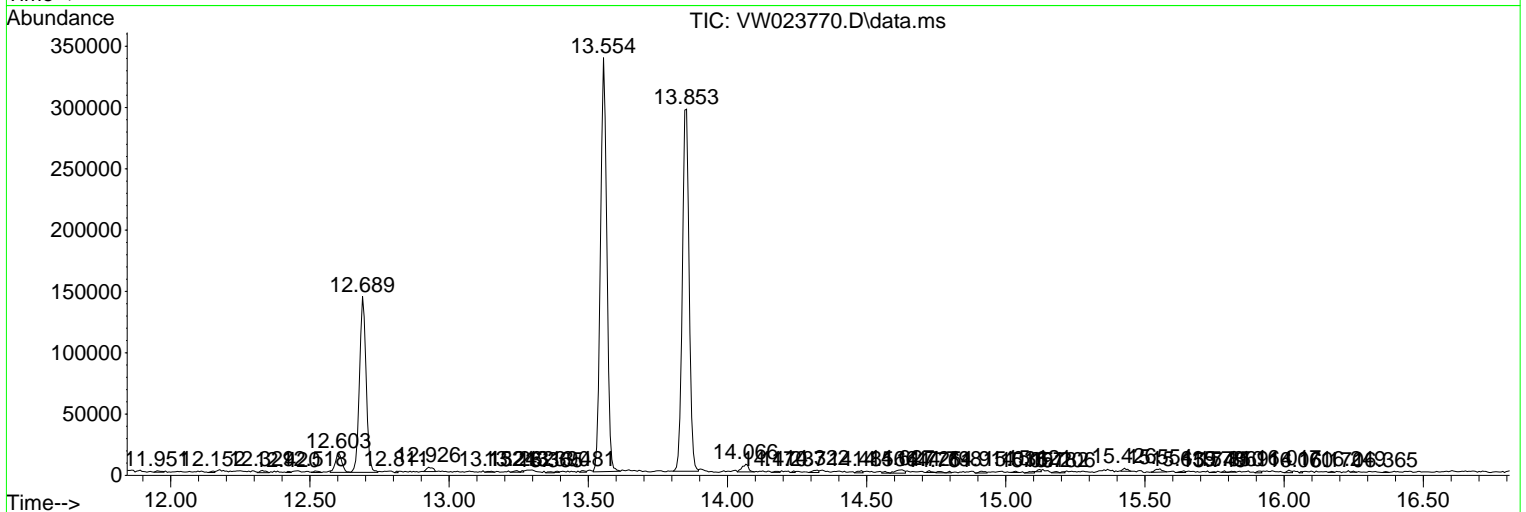
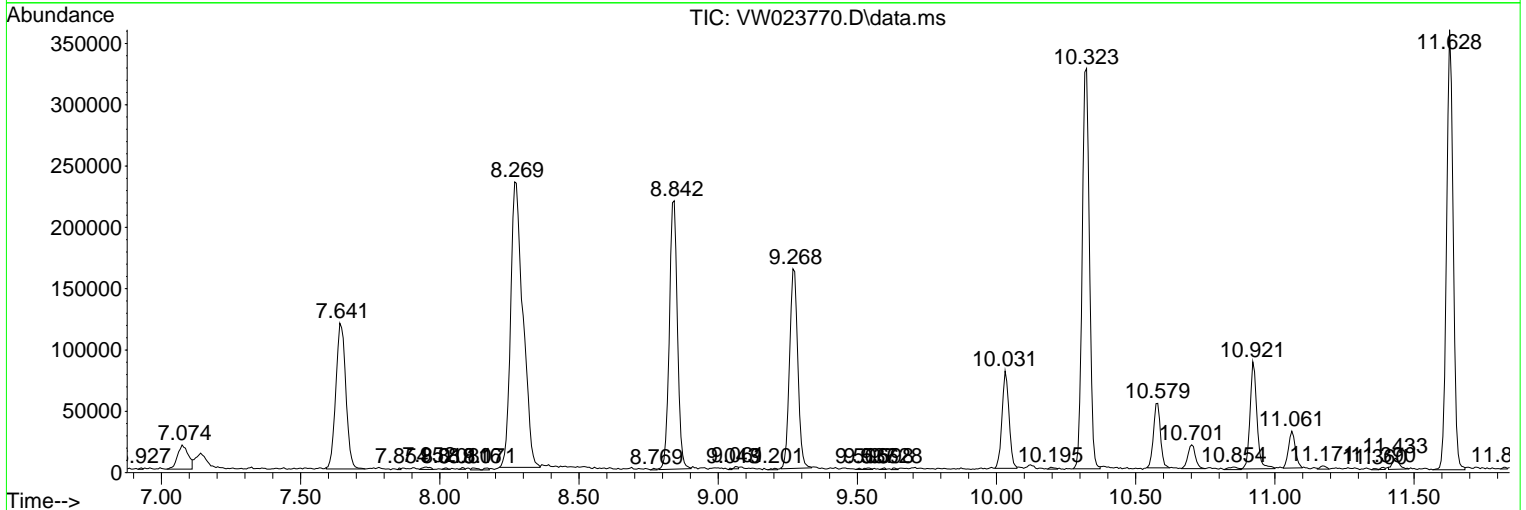
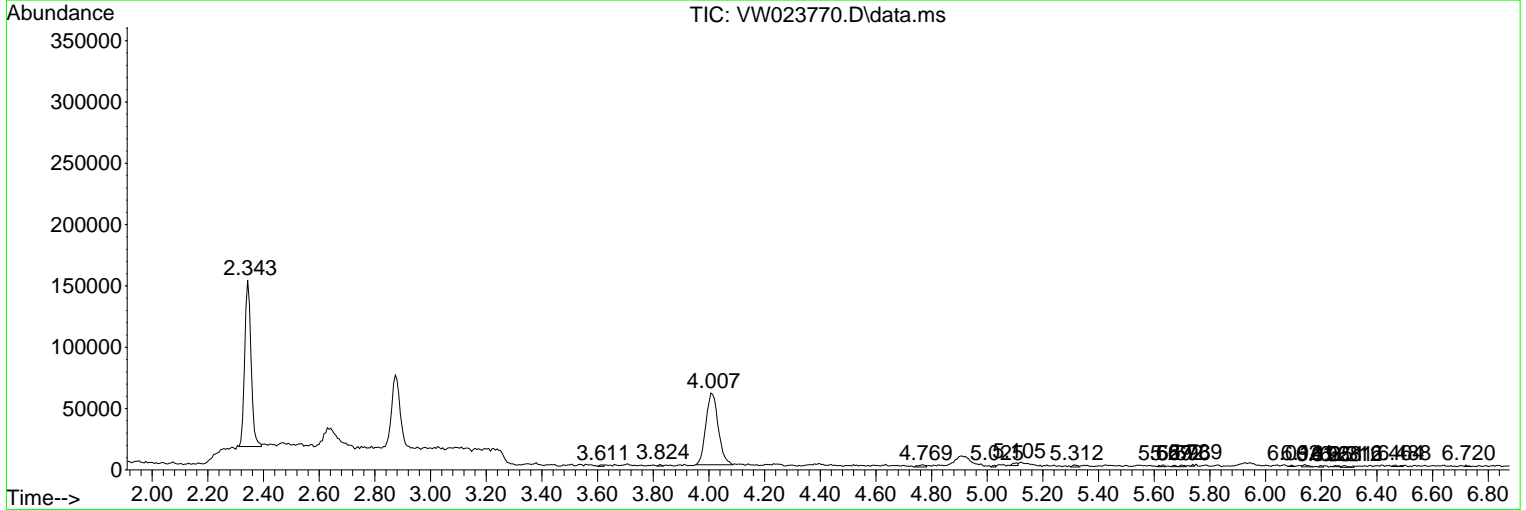
Sum of corrected areas: 5331241

Data Path : Z:\voasrv\HPCHEM1\MSVOA\_W\Data\VW071522\  
 Data File : VW023770.D  
 Acq On : 16 Jul 2022 01:43  
 Operator : SY/VA  
 Sample : VW0715SBL02  
 Misc : 5.00g/10mL/MSVOA\_W/SOIL  
 ALS Vial : 1 Sample Multiplier: 1

Instrument :  
 MSVOA\_W  
 ClientSampleId :  
 VBLK549

Quant Method : Z:\voasrv\HPCHEM1\MSVOA\_W\Method\SFAMWLM071322SMA.M  
 Quant Title : SFAM01.0

TIC Library : C:\Database\NIST20.L  
 TIC Integration Parameters: LSCINT.P



Library Search Compound Report

Data Path : Z:\voasrv\HPCHEM1\MSVOA\_W\Data\VW071522\  
Data File : VW023770.D  
Acq On : 16 Jul 2022 01:43  
Operator : SY/VA  
Sample : VW0715SBL02  
Misc : 5.00g/10mL/MSVOA\_W/SOIL  
ALS Vial : 1 Sample Multiplier: 1

Instrument :  
MSVOA\_W  
ClientSampleId :  
VBLK549

Quant Method : Z:\voasrv\HPCHEM1\MSVOA\_W\Method\SFAMWLM071322SMA.M  
Quant Title : SFAM01.0

TIC Library : C:\Database\NIST20.L  
TIC Integration Parameters: LSCINT.P

No Library Search Compounds Detected

\*\*\*\*\*

Data Path : Z:\voasrv\HPCHEM1\MSVOA\_W\Data\VW071522\  
Data File : VW023770.D  
Acq On : 16 Jul 2022 01:43  
Operator : SY/VA  
Sample : VW0715SBL02  
Misc : 5.00g/10mL/MSVOA\_W/SOIL  
ALS Vial : 1 Sample Multiplier: 1

Instrument :  
MSVOA\_W  
ClientSampleId :  
VBLK549

Quant Method : Z:\voasrv\HPCHEM1\MSVOA\_W\Method\SFAMWLM071322SMA.M  
Quant Title : SFAM01.0

TIC Library : C:\Database\NIST0.L  
TIC Integration Parameters: LSCINT.P

TIC Top Hit name	RT	EstConc	Units	Response	--Internal Standard--			
					#	RT	Resp	Conc

---