

Data Path : Z:\voasrv\HPCHEM1\MSVOA_W\Data\VW071522\
 Data File : VW023773.D
 Acq On : 16 Jul 2022 03:09
 Operator : SY/VA
 Sample : N3700-18RE
 Misc : 6.57g/10mL/MSVOA_W/SOIL
 ALS Vial : 1 Sample Multiplier: 1

Instrument :
 MSVOA_W
 ClientSampleId :
 F5B59RE

Integration Parameters: LSCINT.P

Integrator: RTE
 Smoothing : OFF
 Sampling : 1
 Start Thrs: 0.2
 Stop Thrs : 0

Filtering: 5
 Min Area: 0 % of largest Peak
 Max Peaks: 100
 Peak Location: TOP

If leading or trailing edge < 100 prefer < Baseline drop else tangent >
 Peak separation: 5

Method : Z:\voasrv\HPCHEM1\MSVOA_W\Method\SFAMWLM071322SMA.M
 Title : SFAM01.0

Signal : TIC: VW023773.D\data.ms

peak #	R.T. min	first scan	max scan	last scan	PK TY	peak height	corr. area	corr. % max.	% of total
1	2.245	49	56	57	rBV5	8608	17696	17.63%	2.342%
2	3.410	246	247	249	rBV2	1545	715	0.71%	0.095%
3	4.013	340	346	356	rVB3	11369	31063	30.94%	4.112%
4	4.135	361	366	370	rBV6	2002	4955	4.94%	0.656%
5	4.598	440	442	444	rBV3	1029	1098	1.09%	0.145%
6	4.739	464	465	466	rBV	1258	777	0.77%	0.103%
7	4.873	484	487	488	rBV2	2011	1737	1.73%	0.230%
8	5.123	526	528	530	rBV3	1335	1365	1.36%	0.181%
9	5.220	542	544	546	rBV2	1373	1576	1.57%	0.209%
10	5.360	564	567	570	rBV5	1097	1903	1.90%	0.252%
11	5.495	586	589	591	rVV4	994	984	0.98%	0.130%
12	5.556	595	599	602	rBV6	1371	2414	2.40%	0.320%
13	5.787	634	637	638	rBV3	1680	1597	1.59%	0.211%
14	5.915	655	658	660	rBV4	1431	2271	2.26%	0.301%
15	6.116	689	691	694	rBV4	1381	1522	1.52%	0.201%
16	6.397	735	737	740	rBV4	1518	1271	1.27%	0.168%
17	6.531	757	759	760	rBV2	1145	1069	1.06%	0.142%
18	6.622	771	774	776	rVB4	1359	1340	1.33%	0.177%
19	6.653	776	779	781	rBV4	873	1089	1.08%	0.144%
20	6.732	790	792	793	rBV2	1042	857	0.85%	0.113%
21	6.830	806	808	809	rBV2	1161	929	0.93%	0.123%
22	6.909	819	821	824	rBV4	1064	1567	1.56%	0.207%
23	7.000	832	836	837	rBV4	1077	1300	1.30%	0.172%
24	7.049	841	844	845	rBV3	1359	1824	1.82%	0.241%
25	7.580	930	931	933	rBV2	1035	950	0.95%	0.126%
26	7.647	937	942	954	rVB2	18104	46688	46.51%	6.180%
27	8.049	1006	1008	1010	rBV3	950	909	0.91%	0.120%
28	8.134	1019	1022	1025	rBV2	958	1387	1.38%	0.184%
29	8.177	1027	1029	1030	rBV2	1045	833	0.83%	0.110%
30	8.220	1034	1036	1037	rBV2	1141	791	0.79%	0.105%
31	8.275	1037	1045	1059	rBV3	32622	100385	100.00%	13.288%
32	8.701	1113	1115	1116	rBV2	1321	916	0.91%	0.121%
33	8.842	1131	1138	1145	rVV	31602	65774	65.52%	8.707%
34	8.970	1157	1159	1160	rBV2	1179	911	0.91%	0.121%
35	9.159	1188	1190	1192	rBV3	1216	1172	1.17%	0.155%
36	9.274	1203	1209	1217	rVB2	26693	51507	51.31%	6.818%

Data Path : Z:\voasrv\HPCHEM1\MSVOA_W\Data\VW071522\
 Data File : VW023773.D
 Acq On : 16 Jul 2022 03:09
 Operator : SY/VA
 Sample : N3700-18RE
 Misc : 6.57g/10mL/MSVOA_W/SOIL
 ALS Vial : 1 Sample Multiplier: 1

Instrument :
 MSVOA_W
 ClientSampleId :
 F5B59RE

Integration Parameters: LSCINT.P

Integrator: RTE
 Smoothing : OFF
 Sampling : 1
 Start Thrs: 0.2
 Stop Thrs : 0

Filtering: 5
 Min Area: 0 % of largest Peak
 Max Peaks: 100
 Peak Location: TOP

If leading or trailing edge < 100 prefer < Baseline drop else tangent >
 Peak separation: 5

Method : Z:\voasrv\HPCHEM1\MSVOA_W\Method\SFAMWLM071322SMA.M
 Title : SFAM01.0

37	9.415	1230	1232	1233	rBV2	1240	1237	1.23%	0.164%
38	9.658	1270	1272	1273	rBV2	1051	809	0.81%	0.107%
39	9.817	1296	1298	1301	rBV4	1132	1562	1.56%	0.207%
40	9.890	1308	1310	1312	rBV3	1169	1026	1.02%	0.136%
41	9.939	1315	1318	1321	rBV5	1252	2117	2.11%	0.280%
42	10.036	1326	1334	1339	rBV4	7468	15534	15.47%	2.056%
43	10.219	1361	1364	1366	rBV3	1389	1572	1.57%	0.208%
44	10.323	1375	1381	1388	rVB	35346	64627	64.38%	8.555%
45	10.573	1419	1422	1431	rVB6	5178	10540	10.50%	1.395%
46	10.927	1473	1480	1485	rBV3	8544	17831	17.76%	2.360%
47	11.140	1514	1515	1518	rBV3	1345	1121	1.12%	0.148%
48	11.164	1518	1519	1523	rVB4	1244	1112	1.11%	0.147%
49	11.256	1532	1534	1536	rVB2	776	721	0.72%	0.095%
50	11.286	1536	1539	1541	rBV4	1320	1787	1.78%	0.237%
51	11.372	1550	1553	1554	rBV3	733	743	0.74%	0.098%
52	11.414	1558	1560	1562	rBV3	1087	1077	1.07%	0.143%
53	11.487	1570	1572	1574	rVB3	1039	793	0.79%	0.105%
54	11.561	1580	1584	1585	rBV3	1050	1327	1.32%	0.176%
55	11.628	1589	1595	1603	rVV	45537	80366	80.06%	10.638%
56	11.792	1619	1622	1625	rBV5	962	1698	1.69%	0.225%
57	11.878	1635	1636	1637	rBV	1789	1102	1.10%	0.146%
58	12.438	1726	1728	1729	rBV2	835	733	0.73%	0.097%
59	12.591	1750	1753	1754	rBV3	1241	945	0.94%	0.125%
60	12.609	1754	1756	1760	rVB4	1937	1666	1.66%	0.221%
61	12.688	1763	1769	1776	rVB	19933	34650	34.52%	4.587%
62	12.780	1782	1784	1787	rVB4	1401	1251	1.25%	0.166%
63	12.896	1800	1803	1804	rBV2	843	955	0.95%	0.126%
64	13.048	1825	1828	1830	rVB4	1630	1446	1.44%	0.191%
65	13.194	1850	1852	1854	rVB2	1643	1173	1.17%	0.155%
66	13.335	1874	1875	1878	rBV3	1102	904	0.90%	0.120%
67	13.359	1878	1879	1880	rBV	1362	774	0.77%	0.102%
68	13.469	1894	1897	1899	rBV3	1156	1374	1.37%	0.182%
69	13.554	1906	1911	1917	rBV	33571	53654	53.45%	7.102%
70	13.780	1947	1948	1950	rVB2	1171	827	0.82%	0.109%
71	13.847	1953	1959	1965	rVV2	28233	49793	49.60%	6.591%
72	14.066	1994	1995	1997	rBV2	1326	994	0.99%	0.132%
73	14.274	2028	2029	2034	rVB4	1272	1621	1.61%	0.215%
74	14.420	2049	2053	2056	rBB6	1357	1851	1.84%	0.245%
75	14.475	2060	2062	2065	rBV4	873	806	0.80%	0.107%
76	14.536	2068	2072	2073	rBV3	947	1139	1.13%	0.151%

Data Path : Z:\voasrv\HPCHEM1\MSVOA_W\Data\VW071522\
 Data File : VW023773.D
 Acq On : 16 Jul 2022 03:09
 Operator : SY/VA
 Sample : N3700-18RE
 Misc : 6.57g/10mL/MSVOA_W/SOIL
 ALS Vial : 1 Sample Multiplier: 1

Instrument :
 MSVOA_W
 ClientSampleId :
 F5B59RE

Integration Parameters: LSCINT.P

Integrator: RTE
 Smoothing : OFF Filtering: 5
 Sampling : 1 Min Area: 0 % of largest Peak
 Start Thrs: 0.2 Max Peaks: 100
 Stop Thrs : 0 Peak Location: TOP

If leading or trailing edge < 100 prefer < Baseline drop else tangent >
 Peak separation: 5

Method : Z:\voasrv\HPCHEM1\MSVOA_W\Method\SFAMWLM071322SMA.M
 Title : SFAM01.0

77	14.560	2073	2076	2079	rVB5	791	937	0.93%	0.124%
78	14.664	2091	2093	2094	rBV2	1121	821	0.82%	0.109%
79	14.682	2094	2096	2098	rVB3	1064	855	0.85%	0.113%
80	14.719	2098	2102	2104	rBV3	2516	2738	2.73%	0.362%
81	14.865	2124	2126	2130	rVB4	1146	1425	1.42%	0.189%
82	14.932	2133	2137	2139	rBV5	1272	1882	1.87%	0.249%
83	14.999	2145	2148	2150	rBV4	869	1033	1.03%	0.137%
84	15.023	2150	2152	2155	rBV4	646	807	0.80%	0.107%
85	15.127	2167	2169	2173	rVB5	1225	1447	1.44%	0.192%
86	15.170	2173	2176	2179	rBV5	1323	1721	1.71%	0.228%
87	15.426	2214	2218	2222	rVB5	1366	2091	2.08%	0.277%
88	15.548	2235	2238	2241	rBV5	1011	1320	1.31%	0.175%
89	15.615	2246	2249	2253	rBV6	1543	2983	2.97%	0.395%
90	15.755	2270	2272	2273	rBV2	1015	938	0.93%	0.124%
91	15.859	2286	2289	2290	rBV3	1320	1237	1.23%	0.164%
92	15.895	2293	2295	2298	rVB3	1793	1922	1.91%	0.254%
93	15.950	2301	2304	2307	rBV4	1342	1391	1.39%	0.184%
94	16.048	2318	2320	2321	rBV2	796	730	0.73%	0.097%
95	16.109	2327	2330	2335	rBV7	1379	1850	1.84%	0.245%
96	16.243	2349	2352	2355	rBV4	1238	1977	1.97%	0.262%
97	16.298	2358	2361	2363	rBV3	1100	884	0.88%	0.117%
98	16.371	2371	2373	2377	rVB4	1105	919	0.92%	0.122%
99	16.480	2389	2391	2395	rVB3	1063	1516	1.51%	0.201%
100	16.657	2418	2420	2423	rBV4	1314	1631	1.62%	0.216%

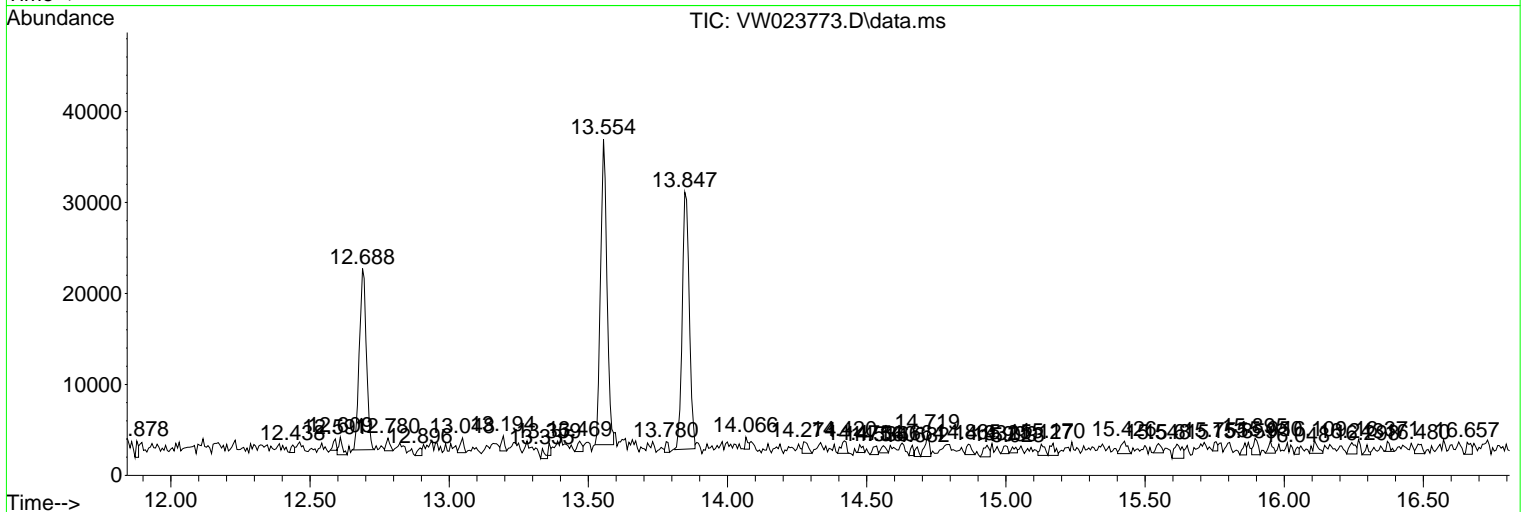
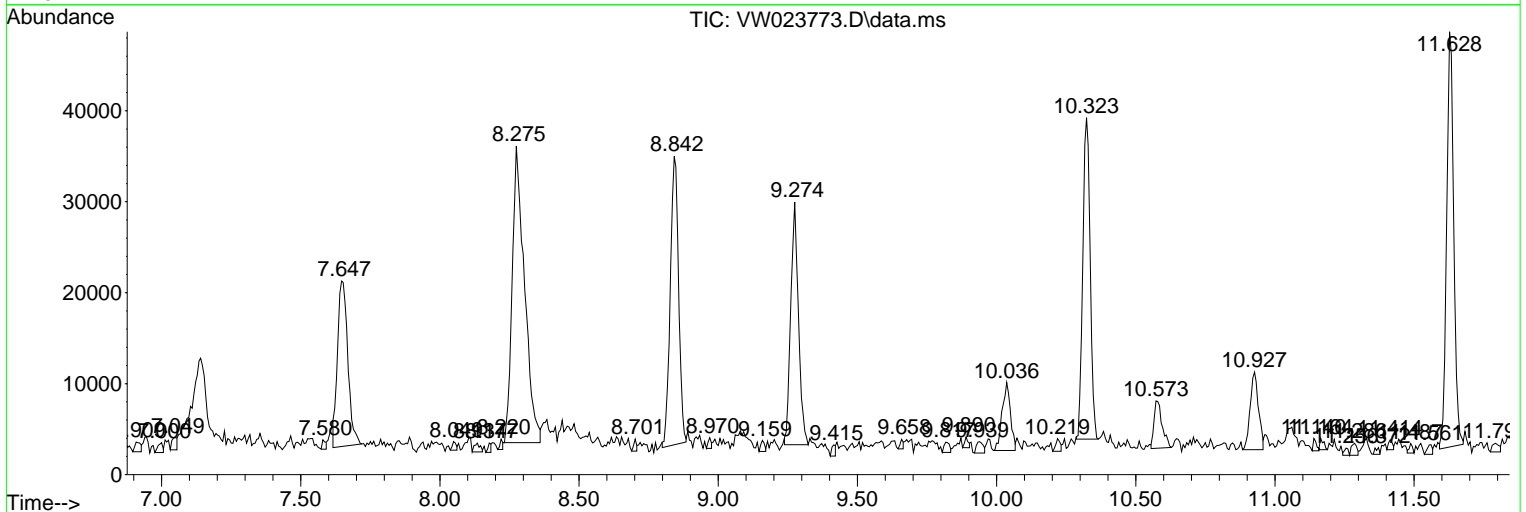
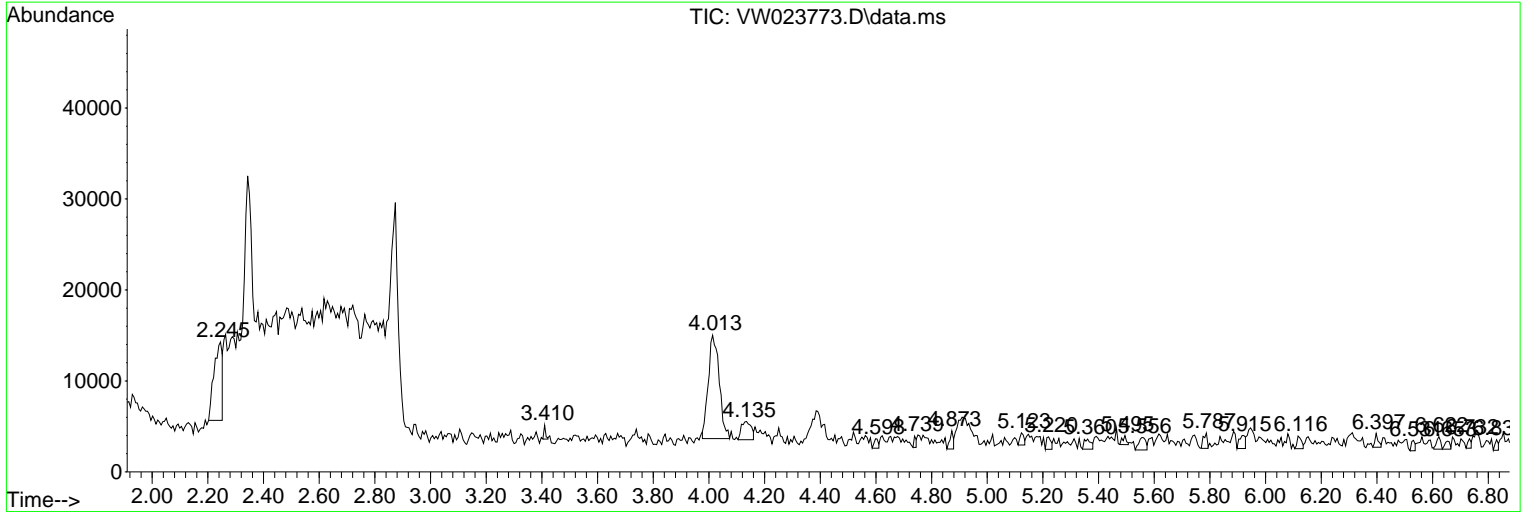
Sum of corrected areas: 755455

Data Path : Z:\voasrv\HPCHEM1\MSVOA_W\Data\VW071522\
 Data File : VW023773.D
 Acq On : 16 Jul 2022 03:09
 Operator : SY/VA
 Sample : N3700-18RE
 Misc : 6.57g/10mL/MSVOA_W/SOIL
 ALS Vial : 1 Sample Multiplier: 1

Instrument :
 MSVOA_W
 ClientSampleId :
 F5B59RE

Quant Method : Z:\voasrv\HPCHEM1\MSVOA_W\Method\SFAMWLM071322SMA.M
 Quant Title : SFAM01.0

TIC Library : C:\Database\NIST20.L
 TIC Integration Parameters: LSCINT.P



Data Path : Z:\voasrv\HPCHEM1\MSVOA_W\Data\VW071522\
 Data File : VW023773.D
 Acq On : 16 Jul 2022 03:09
 Operator : SY/VA
 Sample : N3700-18RE
 Misc : 6.57g/10mL/MSVOA_W/SOIL
 ALS Vial : 1 Sample Multiplier: 1

Instrument :
 MSVOA_W
 ClientSampleId :
 F5B59RE

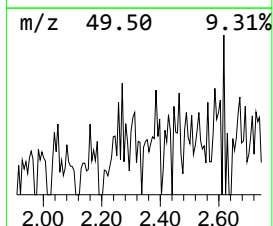
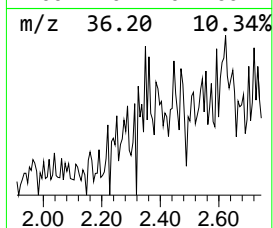
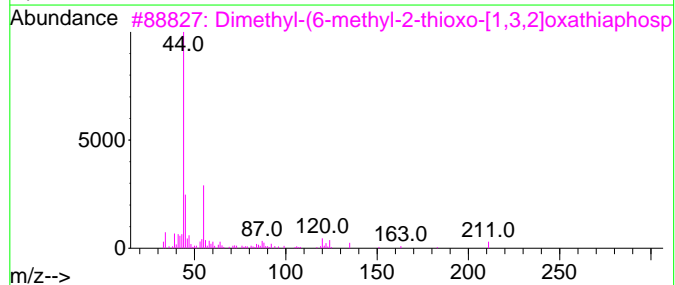
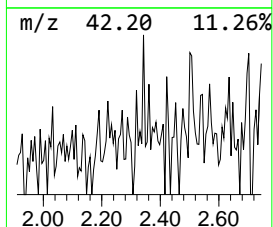
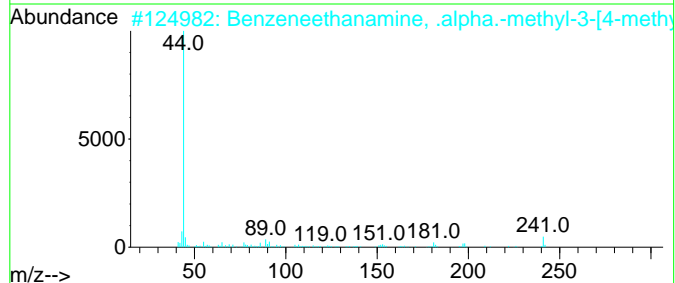
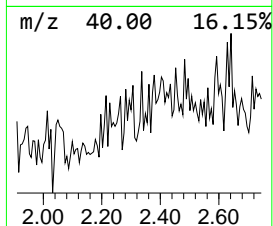
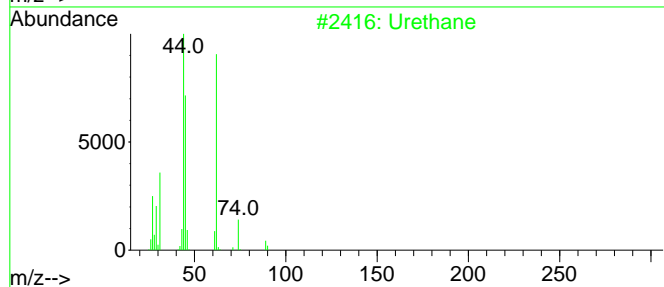
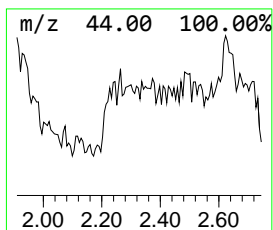
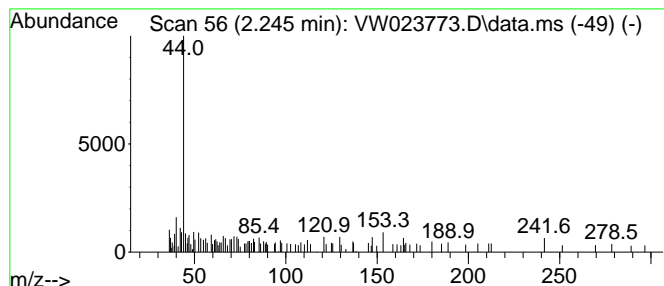
Quant Method : Z:\voasrv\HPCHEM1\MSVOA_W\Method\SFAMWLM071322SMA.M
 Quant Title : SFAM01.0

TIC Library : C:\Database\NIST20.L
 TIC Integration Parameters: LSCINT.P

 Peak Number 1 unknown-01 Concentration Rank 1

R.T.	EstConc	Area	Relative to ISTD	R.T.
2.245	6.73 ug/L	17696	1,4-Difluorobenzene	8.842

Hit#	of	5	Tentative ID	MW	MolForm	CAS#	Qual
1			Urethane	89	C3H7NO2	000051-79-6	47
2			Benzeneethanamine, .alpha.-methy...	241	C16H19NO	1000126-04-0	47
3			Dimethyl-(6-methyl-2-thioxo-[1,3...	211	C6H14NOPS2	139575-19-2	47
4			3,3-Dimethyl-4-methylamino-butan...	129	C7H15NO	123528-99-4	46
5			Propanoic acid, 2-[(1-cyclohexyl...	255	C14H25NO3	1000142-14-7	43



Data Path : Z:\voasrv\HPCHEM1\MSVOA_W\Data\VW071522\
 Data File : VW023773.D
 Acq On : 16 Jul 2022 03:09
 Operator : SY/VA
 Sample : N3700-18RE
 Misc : 6.57g/10mL/MSVOA_W/SOIL
 ALS Vial : 1 Sample Multiplier: 1

Instrument :
 MSVOA_W
 ClientSampleId :
 F5B59RE

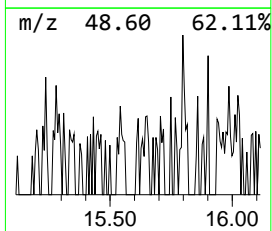
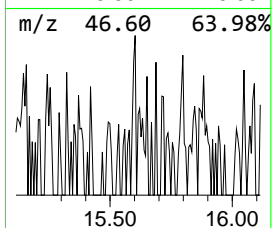
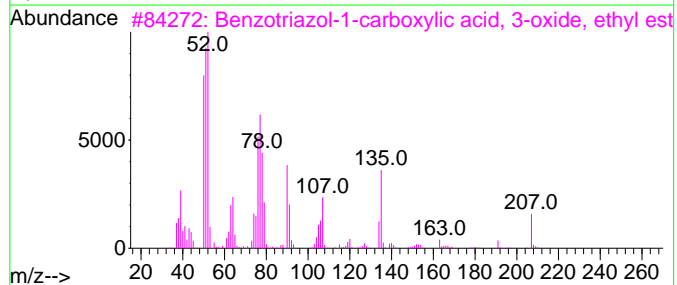
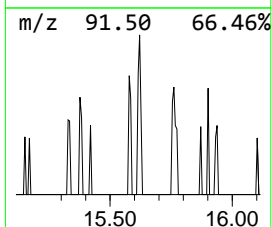
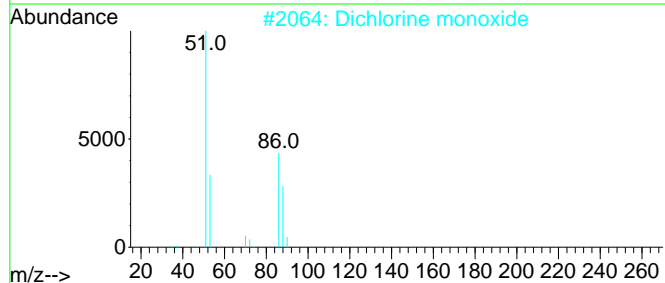
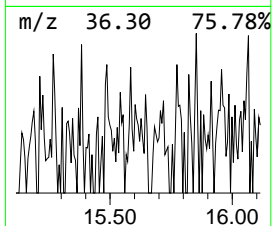
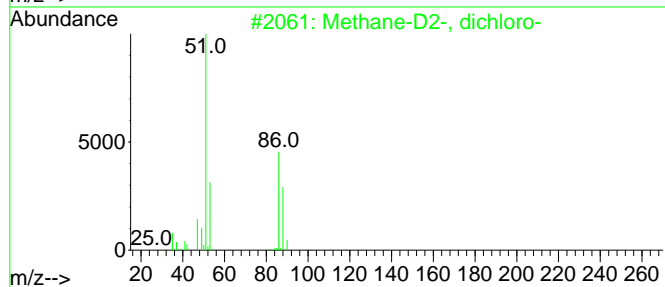
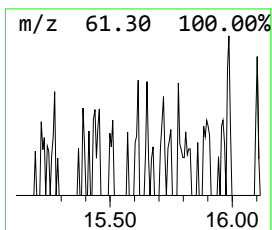
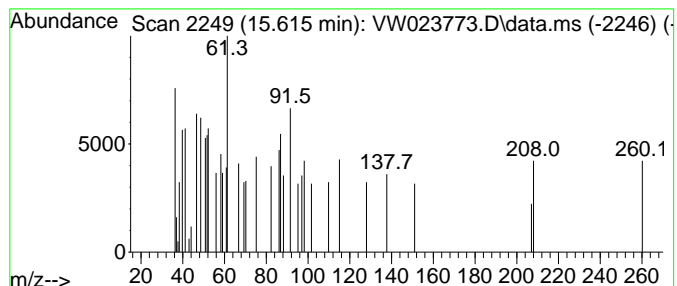
Quant Method : Z:\voasrv\HPCHEM1\MSVOA_W\Method\SFAMWLM071322SMA.M
 Quant Title : SFAM01.0

TIC Library : C:\Database\NIST20.L
 TIC Integration Parameters: LSCINT.P

 Peak Number 4 unknown-02 Concentration Rank 3

R.T.	EstConc	Area	Relative to ISTD	R.T.
15.615	1.39 ug/L	2983	1,4-Dichlorobenzene-d4	13.554

Hit#	of	5	Tentative ID	MW	MolForm	CAS#	Qual
1			Methane-D2-, dichloro-	86	CD2Cl2	001665-00-5	30
2			Dichlorine monoxide	86	Cl2O	007791-21-1	16
3			Benzotriazol-1-carboxylic acid, ...	207	C9H9N3O3	211808-98-9	9
4			Pyrimidine, 5-bromo-	158	C4H3BrN2	004595-59-9	9
5			7-Hydroxy-4H-1,4-benzoxazine-2,3...	179	C8H5N04	081055-25-6	9



Data Path : Z:\voasrv\HPCHEM1\MSVOA_W\Data\VW071522\
Data File : VW023773.D
Acq On : 16 Jul 2022 03:09
Operator : SY/VA
Sample : N3700-18RE
Misc : 6.57g/10mL/MSVOA_W/SOIL
ALS Vial : 1 Sample Multiplier: 1

Instrument :
MSVOA_W
ClientSampleId :
F5B59RE

Quant Method : Z:\voasrv\HPCHEM1\MSVOA_W\Method\SFAMWLM071322SMA.M
Quant Title : SFAM01.0

TIC Library : C:\Database\NIST0.L
TIC Integration Parameters: LSCINT.P

TIC Top Hit name	RT	EstConc	Units	Response	--Internal Standard--			
					#	RT	Resp	Conc
unknown-01	2.245	6.7	ug/L	17696	1	8.842	65774	25.0
unknown-02	15.615	1.4	ug/L	2983	3	13.554	53654	25.0