

Data Path : Z:\voasrv\HPCHEM1\MSVOA\_W\Data\VW071822\  
 Data File : VW023837.D  
 Acq On : 18 Jul 2022 13:15  
 Operator : SY/VA  
 Sample : N3709-02RE  
 Misc : 5.94g/10mL/MSVOA\_W/SOIL  
 ALS Vial : 1 Sample Multiplier: 1

Instrument :  
 MSVOA\_W  
 ClientSampleId :  
 H0B18RE

Integration Parameters: LSCINT.P

Integrator: RTE  
 Smoothing : OFF  
 Sampling : 1  
 Start Thrs : 0.2  
 Stop Thrs : 0

Filtering: 5  
 Min Area: 0 % of largest Peak  
 Max Peaks: 100  
 Peak Location: TOP

If leading or trailing edge < 100 prefer < Baseline drop else tangent >  
 Peak separation: 5

Method : Z:\voasrv\HPCHEM1\MSVOA\_W\Method\SFAMWLM071322SMA.M  
 Title : SFAM01.0

Signal : TIC: VW023837.D\data.ms

peak #	R.T. min	first scan	max scan	last scan	PK TY	peak height	corr. area	corr. % max.	% of total
1	2.154	36	41	48	rBV	42174	90861	13.82%	1.742%
2	2.343	69	72	84	rVB	93084	162532	24.73%	3.116%
3	3.458	253	255	256	rBV2	2348	1712	0.26%	0.033%
4	4.013	336	346	359	rBV2	49070	156630	23.83%	3.003%
5	4.349	397	401	402	rBV4	1937	2728	0.42%	0.052%
6	4.519	427	429	436	rVB8	1901	3373	0.51%	0.065%
7	4.848	482	483	485	rBV2	1606	1507	0.23%	0.029%
8	4.909	487	493	502	rVB3	14647	42210	6.42%	0.809%
9	5.422	574	577	578	rBV3	1446	1403	0.21%	0.027%
10	5.531	591	595	596	rBV4	1488	1705	0.26%	0.033%
11	5.751	626	631	633	rBV6	1913	3107	0.47%	0.060%
12	5.879	648	652	654	rBV5	1779	2956	0.45%	0.057%
13	6.257	712	714	715	rBV2	1388	1091	0.17%	0.021%
14	6.275	715	717	719	rVV3	1448	1542	0.23%	0.030%
15	6.360	728	731	732	rBV3	2240	2271	0.35%	0.044%
16	6.531	757	759	762	rVB4	2049	2330	0.35%	0.045%
17	6.641	774	777	779	rBV4	1474	1864	0.28%	0.036%
18	6.671	780	782	784	rVB3	1940	1571	0.24%	0.030%
19	6.714	784	789	790	rVB5	1483	1847	0.28%	0.035%
20	6.744	792	794	795	rBV2	1577	1155	0.18%	0.022%
21	7.001	835	836	838	rBV2	1724	1332	0.20%	0.026%
22	7.080	843	849	858	rVV	24102	60369	9.18%	1.157%
23	7.446	906	909	914	rBV7	1724	3118	0.47%	0.060%
24	7.513	918	920	924	rVB5	2541	2306	0.35%	0.044%
25	7.574	928	930	933	rVB4	1399	1178	0.18%	0.023%
26	7.647	933	942	955	rBV	126965	308419	46.92%	5.913%
27	7.781	962	964	967	rVB4	1611	1700	0.26%	0.033%
28	7.811	967	969	972	rBV4	2212	2561	0.39%	0.049%
29	8.019	1001	1003	1006	rBV4	1561	2173	0.33%	0.042%
30	8.104	1015	1017	1020	rVB4	1783	1621	0.25%	0.031%
31	8.153	1020	1025	1026	rBV5	1355	1586	0.24%	0.030%
32	8.275	1036	1045	1060	rBV3	223249	657309	100.00%	12.603%
33	8.561	1091	1092	1095	rBV3	1721	1435	0.22%	0.028%
34	8.628	1101	1103	1105	rBV3	1429	1263	0.19%	0.024%
35	8.842	1130	1138	1149	rBV	257031	489321	74.44%	9.382%
36	9.274	1195	1209	1218	rBV	170998	354696	53.96%	6.801%

Data Path : Z:\voasrv\HPCHEM1\MSVOA\_W\Data\VW071822\  
 Data File : VW023837.D  
 Acq On : 18 Jul 2022 13:15  
 Operator : SY/VA  
 Sample : N3709-02RE  
 Misc : 5.94g/10mL/MSVOA\_W/SOIL  
 ALS Vial : 1 Sample Multiplier: 1

Instrument :  
 MSVOA\_W  
 ClientSampleId :  
 H0B18RE

Integration Parameters: LSCINT.P

Integrator: RTE  
 Smoothing : OFF  
 Sampling : 1  
 Start Thrs: 0.2  
 Stop Thrs : 0

Filtering: 5  
 Min Area: 0 % of largest Peak  
 Max Peaks: 100  
 Peak Location: TOP

If leading or trailing edge < 100 prefer < Baseline drop else tangent >  
 Peak separation: 5

Method : Z:\voasrv\HPCHEM1\MSVOA\_W\Method\SFAMWLM071322SMA.M  
 Title : SFAM01.0

37	9.457	1238	1239	1242	rVB3	1409	1273	0.19%	0.024%
38	9.774	1289	1291	1293	rVB3	1271	1137	0.17%	0.022%
39	9.811	1293	1297	1300	rBV6	1333	2104	0.32%	0.040%
40	9.872	1306	1307	1309	rBV2	1662	1409	0.21%	0.027%
41	10.037	1327	1334	1341	rBV	67151	123260	18.75%	2.363%
42	10.323	1373	1381	1390	rVV	298112	521342	79.31%	9.996%
43	10.579	1417	1423	1431	rVB	50412	85802	13.05%	1.645%
44	10.707	1442	1444	1445	rBV2	1732	1677	0.26%	0.032%
45	10.817	1459	1462	1466	rBV6	1560	3067	0.47%	0.059%
46	10.847	1466	1467	1471	rVB4	2329	1898	0.29%	0.036%
47	10.927	1473	1480	1487	rBV	105806	188676	28.70%	3.618%
48	11.329	1543	1546	1547	rBV4	1576	1850	0.28%	0.035%
49	11.414	1558	1560	1561	rBV2	2056	1599	0.24%	0.031%
50	11.512	1573	1576	1579	rBV5	1409	1605	0.24%	0.031%
51	11.628	1586	1595	1606	rBV	355879	594933	90.51%	11.407%
52	11.920	1640	1643	1646	rBV5	2115	2888	0.44%	0.055%
53	12.012	1655	1658	1663	rVB7	1418	2595	0.39%	0.050%
54	12.054	1663	1665	1666	rBV2	1255	1145	0.17%	0.022%
55	12.122	1674	1676	1677	rBV2	2033	1336	0.20%	0.026%
56	12.170	1680	1684	1685	rBV4	1701	2280	0.35%	0.044%
57	12.304	1703	1706	1707	rVV2	1898	1983	0.30%	0.038%
58	12.359	1711	1715	1721	rVV9	3387	6919	1.05%	0.133%
59	12.408	1721	1723	1724	rVV2	1340	1091	0.17%	0.021%
60	12.469	1727	1733	1738	rVV4	15796	29569	4.50%	0.567%
61	12.524	1738	1742	1744	rVB5	3984	5642	0.86%	0.108%
62	12.603	1749	1755	1763	rVV2	48613	85259	12.97%	1.635%
63	12.689	1763	1769	1780	rVB	153449	269350	40.98%	5.164%
64	12.999	1817	1820	1821	rBV3	2191	2161	0.33%	0.041%
65	13.097	1835	1836	1838	rBV2	1182	1162	0.18%	0.022%
66	13.164	1842	1847	1850	rBV7	2639	3929	0.60%	0.075%
67	13.195	1850	1852	1856	rVB5	1581	1649	0.25%	0.032%
68	13.353	1873	1878	1880	rBV5	1382	2116	0.32%	0.041%
69	13.451	1888	1894	1897	rBV6	8563	15337	2.33%	0.294%
70	13.554	1905	1911	1919	rVB	268299	424850	64.63%	8.146%
71	13.853	1953	1960	1966	rBV	214927	365541	55.61%	7.009%
72	13.999	1982	1984	1985	rBV2	1581	1150	0.17%	0.022%
73	14.066	1990	1995	2000	rVV2	16357	27464	4.18%	0.527%
74	14.194	2013	2016	2017	rBV3	1877	1784	0.27%	0.034%
75	14.292	2028	2032	2033	rBV4	1193	1656	0.25%	0.032%
76	14.322	2033	2037	2038	rBV3	2022	2384	0.36%	0.046%

Data Path : Z:\voasrv\HPCHEM1\MSVOA\_W\Data\VW071822\  
 Data File : VW023837.D  
 Acq On : 18 Jul 2022 13:15  
 Operator : SY/VA  
 Sample : N3709-02RE  
 Misc : 5.94g/10mL/MSVOA\_W/SOIL  
 ALS Vial : 1 Sample Multiplier: 1

Instrument :  
 MSVOA\_W  
 ClientSampleId :  
 H0B18RE

Integration Parameters: LSCINT.P

Integrator: RTE  
 Smoothing : OFF  
 Sampling : 1  
 Start Thrs: 0.2  
 Stop Thrs : 0

Filtering: 5  
 Min Area: 0 % of largest Peak  
 Max Peaks: 100  
 Peak Location: TOP

If leading or trailing edge < 100 prefer < Baseline drop else tangent >  
 Peak separation: 5

Method : Z:\voasrv\HPCHEM1\MSVOA\_W\Method\SFAMWLM071322SMA.M  
 Title : SFAM01.0

77	14.420	2051	2053	2056	rVV4	1155	1377	0.21%	0.026%
78	14.481	2059	2063	2065	rBV4	1076	1380	0.21%	0.026%
79	14.517	2065	2069	2072	rVV5	1641	2703	0.41%	0.052%
80	14.578	2075	2079	2081	rBV5	1579	1965	0.30%	0.038%
81	14.621	2084	2086	2087	rBV2	1780	1438	0.22%	0.028%
82	14.737	2104	2105	2108	rBV3	1740	1475	0.22%	0.028%
83	14.828	2118	2120	2124	rVB5	1475	1456	0.22%	0.028%
84	14.865	2124	2126	2129	rVB4	1436	1116	0.17%	0.021%
85	14.914	2133	2134	2138	rBV4	965	1366	0.21%	0.026%
86	15.030	2150	2153	2154	rBV3	1155	1285	0.20%	0.025%
87	15.115	2165	2167	2169	rBV3	1250	1314	0.20%	0.025%
88	15.139	2169	2171	2177	rBV7	1341	1910	0.29%	0.037%
89	15.237	2184	2187	2190	rBV5	1382	1591	0.24%	0.031%
90	15.481	2223	2227	2229	rBV5	2279	2856	0.43%	0.055%
91	15.597	2243	2246	2249	rBV5	1395	1716	0.26%	0.033%
92	15.712	2262	2265	2266	rBV3	1387	1290	0.20%	0.025%
93	15.938	2300	2302	2303	rBV2	1460	1130	0.17%	0.022%
94	16.090	2325	2327	2335	rVB8	1894	2945	0.45%	0.056%
95	16.157	2335	2338	2342	rBV5	1518	2179	0.33%	0.042%
96	16.218	2345	2348	2349	rVV3	1575	1656	0.25%	0.032%
97	16.261	2352	2355	2357	rBV4	1716	2151	0.33%	0.041%
98	16.328	2360	2366	2369	rVB8	2942	6714	1.02%	0.129%
99	16.462	2384	2388	2392	rVB7	2436	3575	0.54%	0.069%
100	16.755	2433	2436	2438	rVB3	1238	1374	0.21%	0.026%

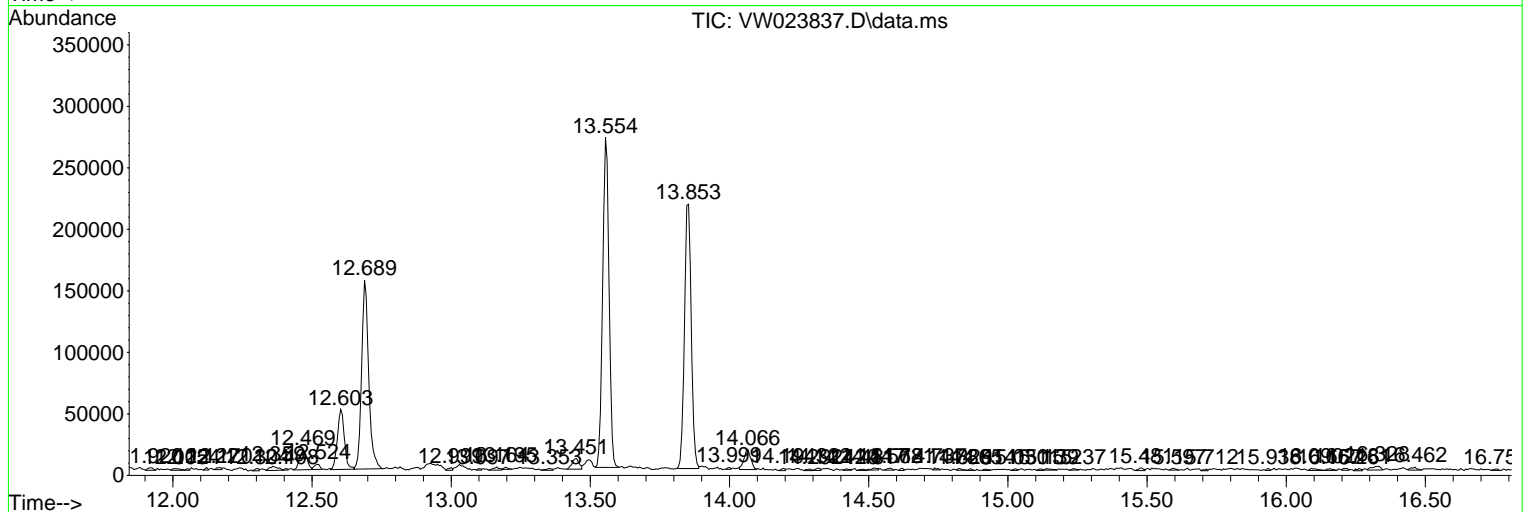
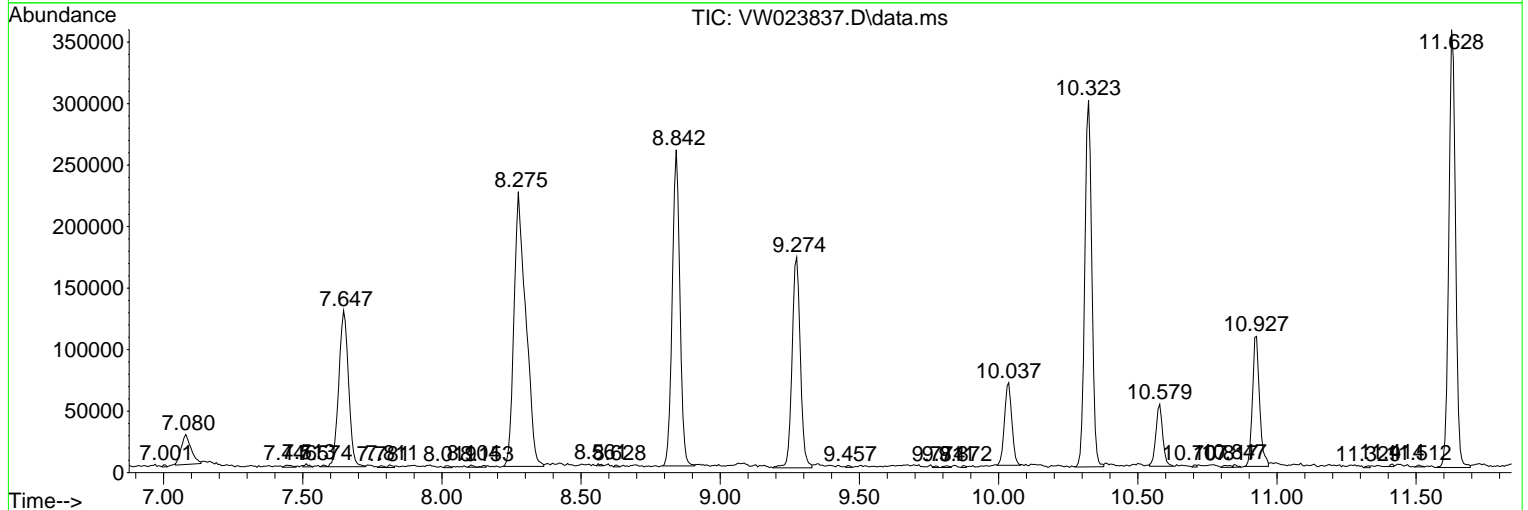
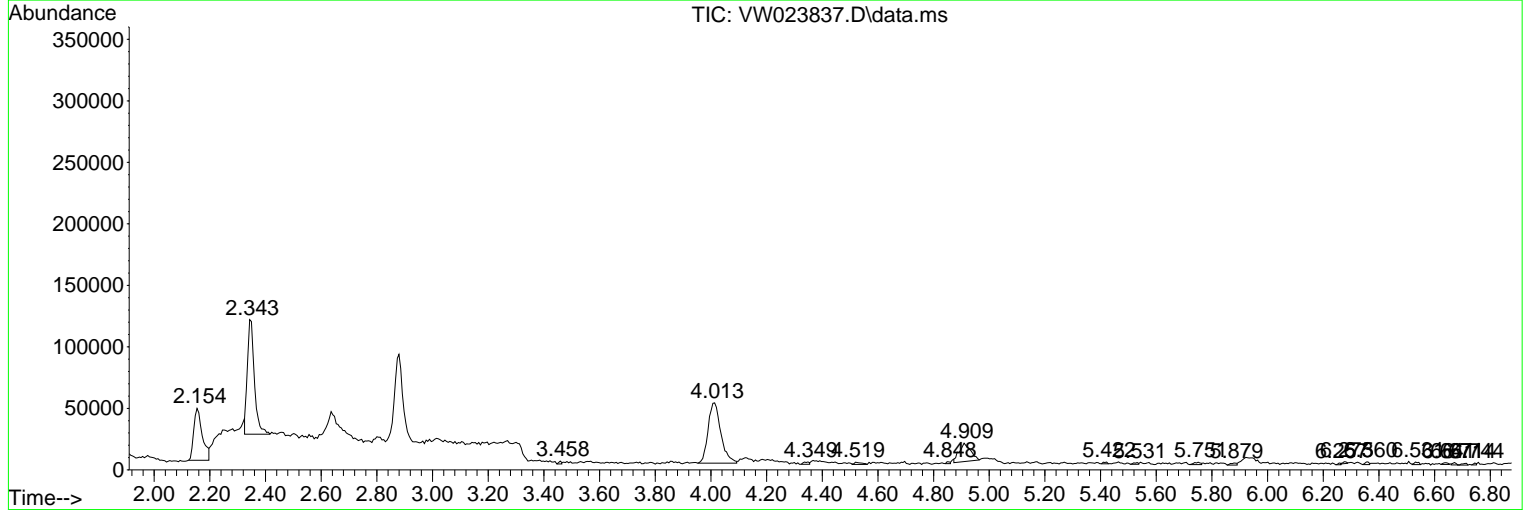
Sum of corrected areas: 5215616

Data Path : Z:\voasrv\HPCHEM1\MSVOA\_W\Data\VW071822\  
 Data File : VW023837.D  
 Acq On : 18 Jul 2022 13:15  
 Operator : SY/VA  
 Sample : N3709-02RE  
 Misc : 5.94g/10mL/MSVOA\_W/SOIL  
 ALS Vial : 1 Sample Multiplier: 1

Instrument :  
 MSVOA\_W  
 ClientSampleId :  
 H0B18RE

Quant Method : Z:\voasrv\HPCHEM1\MSVOA\_W\Method\SFAMWLM071322SMA.M  
 Quant Title : SFAM01.0

TIC Library : C:\Database\NIST20.L  
 TIC Integration Parameters: LSCINT.P





Data Path : Z:\voasrv\HPCHEM1\MSVOA\_W\Data\VW071822\  
Data File : VW023837.D  
Acq On : 18 Jul 2022 13:15  
Operator : SY/VA  
Sample : N3709-02RE  
Misc : 5.94g/10mL/MSVOA\_W/SOIL  
ALS Vial : 1 Sample Multiplier: 1

Instrument :  
MSVOA\_W  
ClientSampleId :  
H0B18RE

Quant Method : Z:\voasrv\HPCHEM1\MSVOA\_W\Method\SFAMWLM071322SMA.M  
Quant Title : SFAM01.0

TIC Library : C:\Database\NIST20.L  
TIC Integration Parameters: LSCINT.P

TIC Top Hit name	RT	EstConc	Units	Response	--Internal Standard--			
					#	RT	Resp	Conc
Sulfur dioxide	2.154	4.6	ug/L	90861	1	8.842	489321	25.0