

Data Path : Z:\voasrv\HPCHEM1\MSVOA_W\Data\VW072021\
 Data File : VW019516.D
 Acq On : 20 Jul 2021 17:15
 Operator : SY/VA
 Sample : M3074-01
 Misc : 5.07g/5.3mL/MSVOA_W/SOIL
 ALS Vial : 13 Sample Multiplier: 1

Instrument :
 MSVOA_W
 ClientSampled :

Quant Time: Jul 21 02:05:27 2021
 Quant Method : Z:\voasrv\HPCHEM1\MSVOA_W\Method\82W071921S.M
 Quant Title : SW846 8260
 QLast Update : Tue Jul 20 04:37:55 2021
 Response via : Initial Calibration

Compound	R.T.	QIon	Response	Conc	Units	Dev(Min)

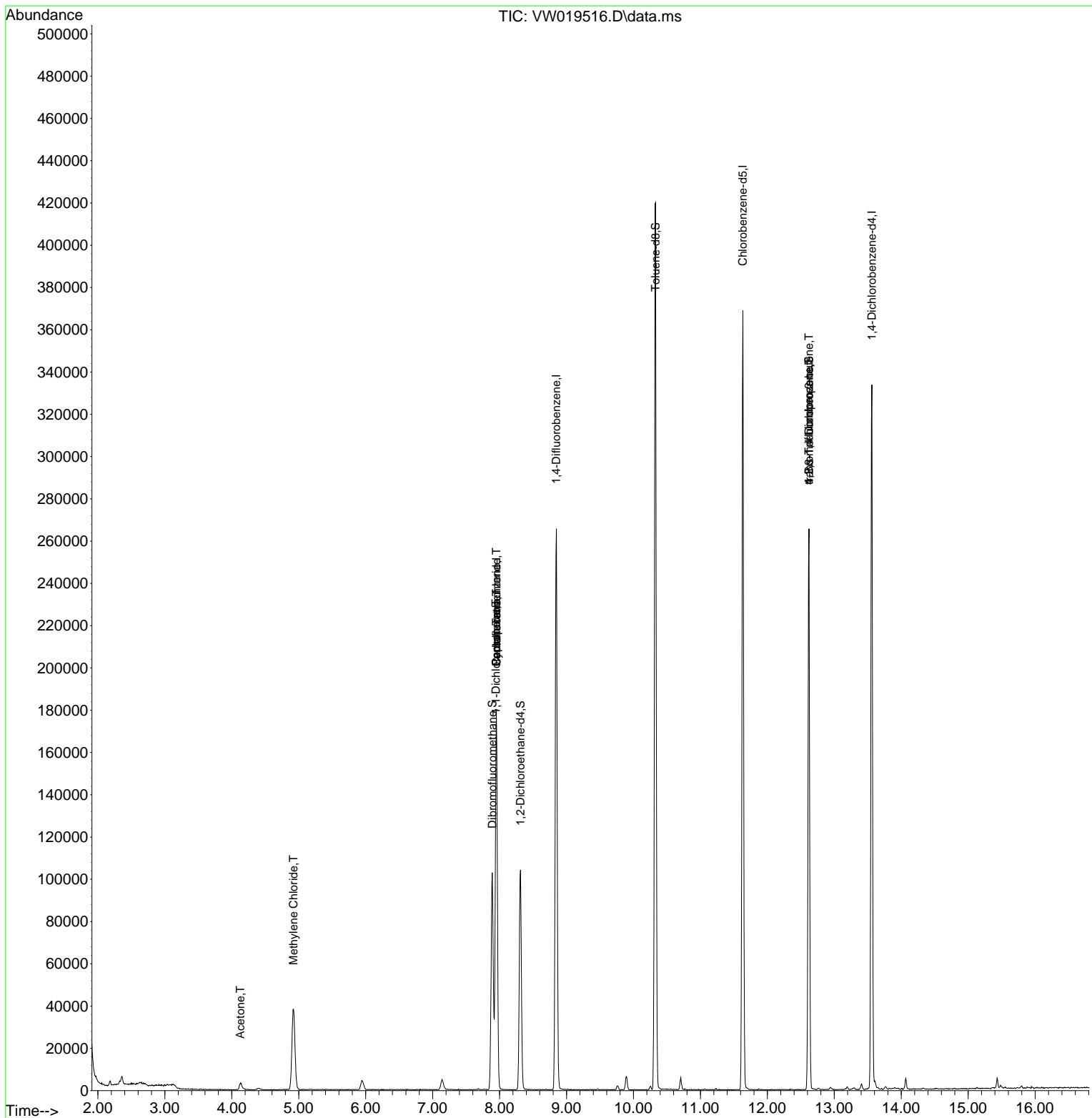
Internal Standards						
1) Pentafluorobenzene	7.952	168	128805	50.000	ug/l	0.00
34) 1,4-Difluorobenzene	8.848	114	221075	50.000	ug/l	0.00
63) Chlorobenzene-d5	11.634	117	203222	50.000	ug/l	0.00
72) 1,4-Dichlorobenzene-d4	13.560	152	88135	50.000	ug/l	0.00
System Monitoring Compounds						
33) 1,2-Dichloroethane-d4	8.311	65	83755	68.924	ug/l	0.00
Spiked Amount	50.000	Range	50 - 163	Recovery	=	137.840%
35) Dibromofluoromethane	7.891	113	73105	54.125	ug/l	0.00
Spiked Amount	50.000	Range	54 - 147	Recovery	=	108.240%
50) Toluene-d8	10.329	98	284501	54.403	ug/l	0.00
Spiked Amount	50.000	Range	49 - 140	Recovery	=	108.800%
62) 4-Bromofluorobenzene	12.621	95	92787	47.301	ug/l	0.00
Spiked Amount	50.000	Range	25 - 144	Recovery	=	94.600%
Target Compounds						
					Qvalue	
11) Tert butyl alcohol	5.172	59	276	Below Cal	#	73
16) Acetone	4.129	43	6171	26.343	ug/l	97
20) Methylene Chloride	4.922	84	30543	16.811	ug/l	99
31) Cyclohexane	7.952	56	2915	1.077	ug/l	# 1
36) 1,1-Dichloropropene	7.945	75	10920	4.633	ug/l	# 49
38) Carbon Tetrachloride	7.952	117	13077	6.351	ug/l	# 16
76) 1,2,3-Trichloropropane	12.621	75	47019	53.979	ug/l	# 100
81) trans-1,4-Dichloro-2-b...	12.621	75	47019	123.018	ug/l	# 12

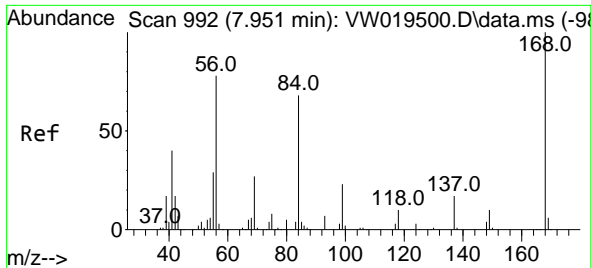
(#) = qualifier out of range (m) = manual integration (+) = signals summed

Data Path : Z:\voasrv\HPCHEM1\MSVOA_W\Data\VW072021\
 Data File : VW019516.D
 Acq On : 20 Jul 2021 17:15
 Operator : SY/VA
 Sample : M3074-01
 Misc : 5.07g/5.3mL/MSVOA_W/SOIL
 ALS Vial : 13 Sample Multiplier: 1

Instrument :
 MSVOA_W
 ClientSampleId :

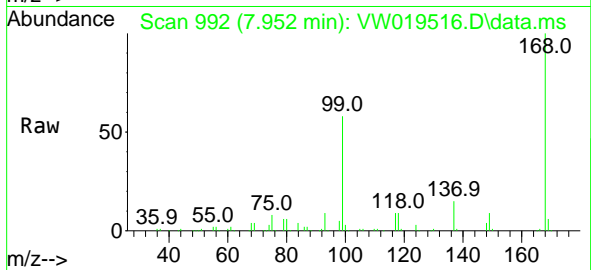
Quant Time: Jul 21 02:05:27 2021
 Quant Method : Z:\voasrv\HPCHEM1\MSVOA_W\Method\82W071921S.M
 Quant Title : SW846 8260
 QLast Update : Tue Jul 20 04:37:55 2021
 Response via : Initial Calibration



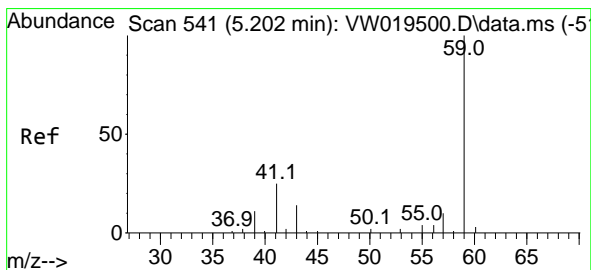
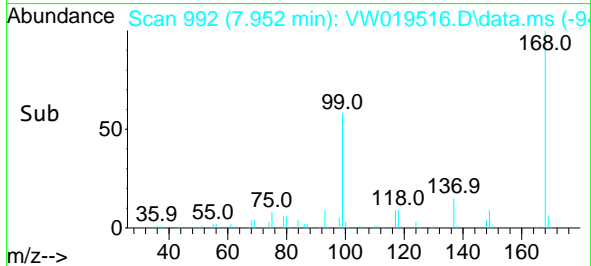
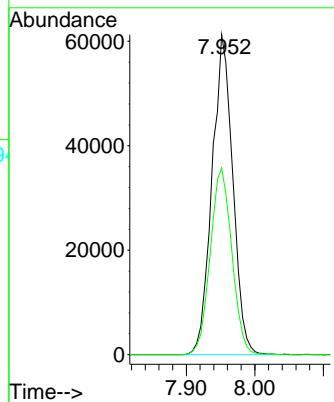


#1
 Pentafluorobenzene
 Concen: 50.000 ug/l
 RT: 7.952 min Scan# 992
 Delta R.T. 0.001 min
 Lab File: VW019516.D
 Acq: 20 Jul 2021 17:15

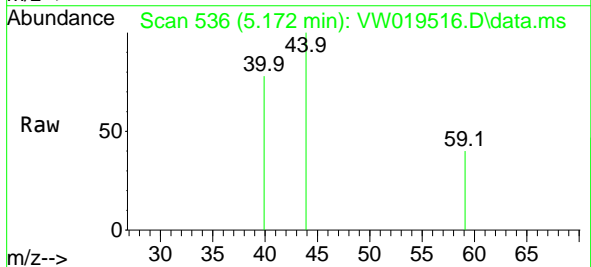
Instrument :
 MSVOA_W
 ClientSampled :



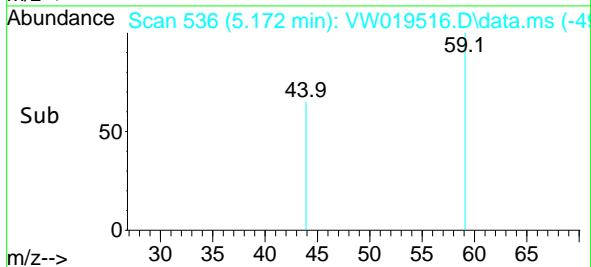
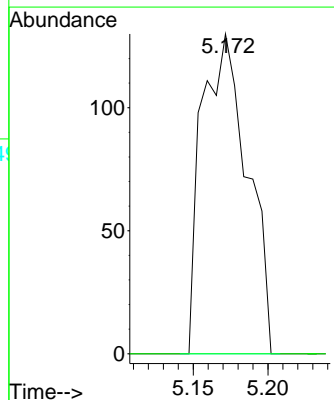
Tgt Ion:168 Resp: 128805
 Ion Ratio Lower Upper
 168 100
 99 58.4 51.9 77.9

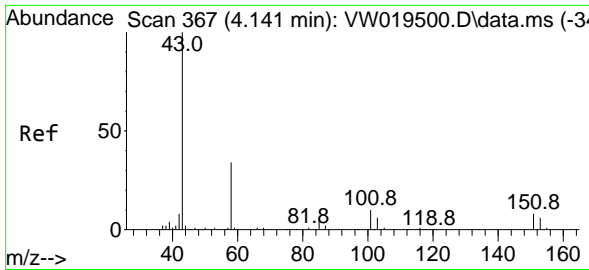


#11
 Tert butyl alcohol
 Concen: Below Cal
 RT: 5.172 min Scan# 536
 Delta R.T. -0.030 min
 Lab File: VW019516.D
 Acq: 20 Jul 2021 17:15



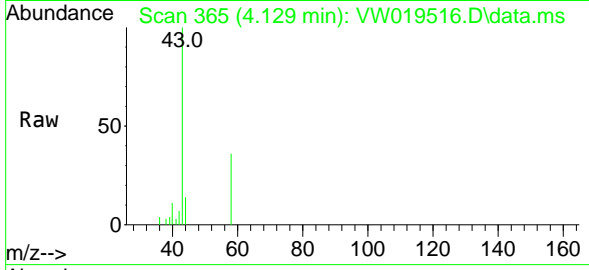
Tgt Ion: 59 Resp: 276
 Ion Ratio Lower Upper
 59 100
 57 0.0 8.0 12.0#



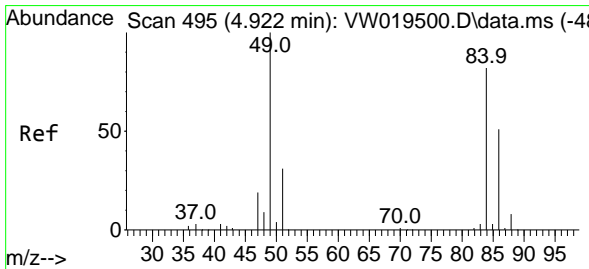
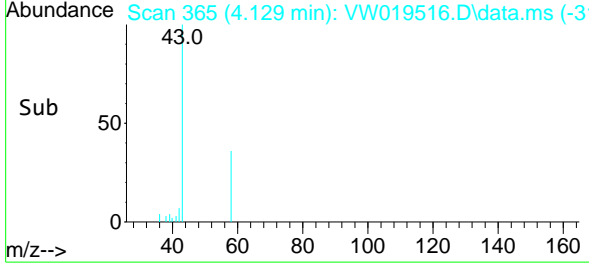
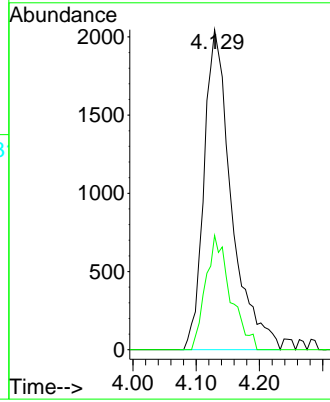


#16
 Acetone
 Concen: 26.343 ug/l
 RT: 4.129 min Scan# 365
 Delta R.T. -0.012 min
 Lab File: VW019516.D
 Acq: 20 Jul 2021 17:15

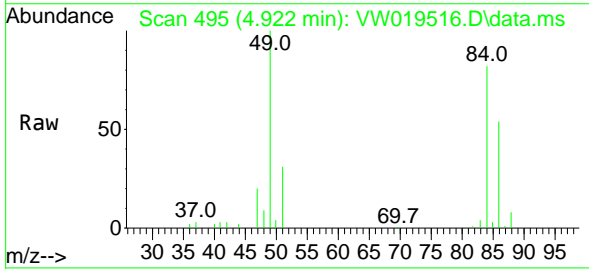
Instrument :
 MSVOA_W
 ClientSampled :



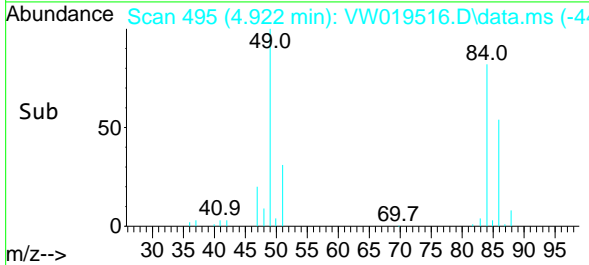
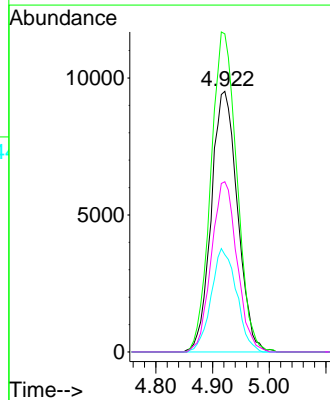
Tgt Ion: 43 Resp: 6171
 Ion Ratio Lower Upper
 43 100
 58 35.7 27.2 40.8

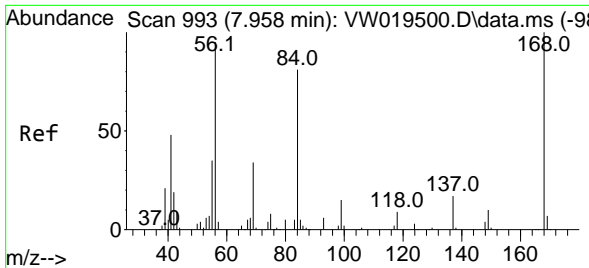


#20
 Methylene Chloride
 Concen: 16.811 ug/l
 RT: 4.922 min Scan# 495
 Delta R.T. -0.000 min
 Lab File: VW019516.D
 Acq: 20 Jul 2021 17:15



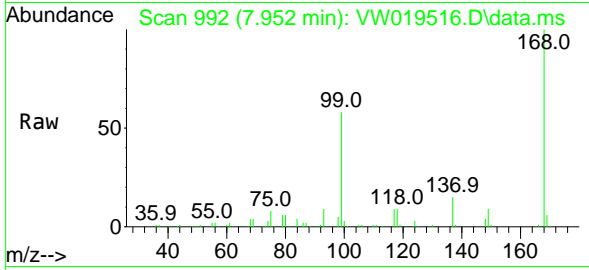
Tgt Ion: 84 Resp: 30543
 Ion Ratio Lower Upper
 84 100
 49 122.0 97.2 145.8
 51 37.3 30.1 45.1
 86 65.3 49.9 74.9



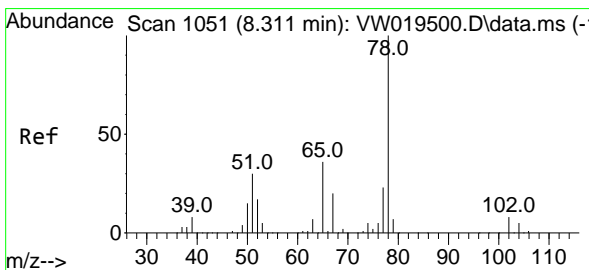
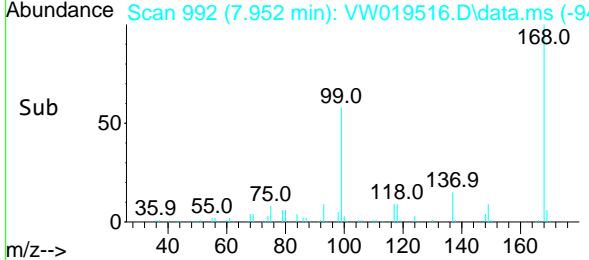
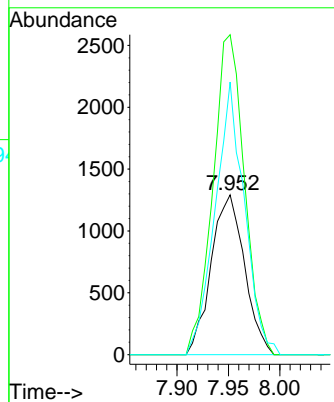


#31
 Cyclohexane
 Concen: 1.077 ug/l
 RT: 7.952 min Scan# 992
 Delta R.T. -0.006 min
 Lab File: VW019516.D
 Acq: 20 Jul 2021 17:15

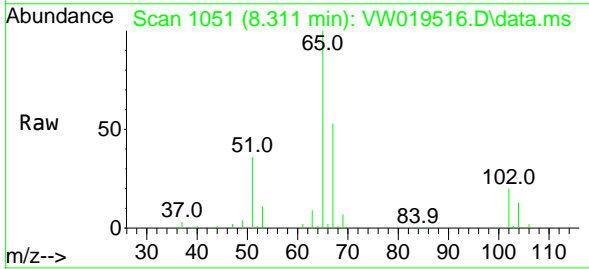
Instrument :
 MSVOA_W
 ClientSampled :



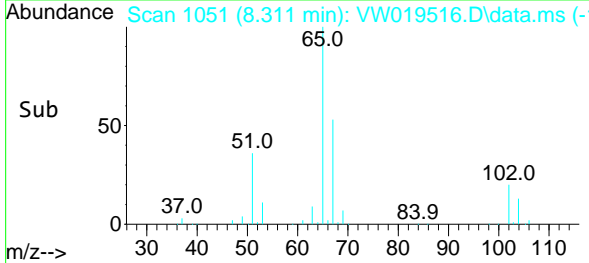
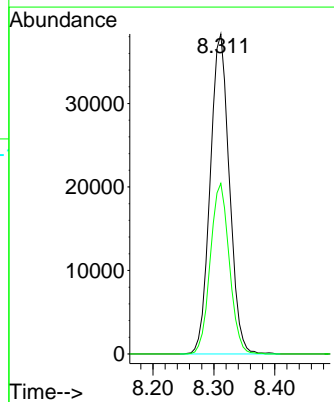
Tgt Ion: 56 Resp: 2915
 Ion Ratio Lower Upper
 56 100
 69 200.2 28.3 42.5#
 84 170.6 68.1 102.1#

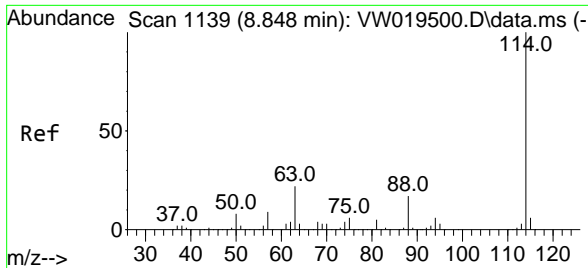


#33
 1,2-Dichloroethane-d4
 Concen: 68.924 ug/l
 RT: 8.311 min Scan# 1051
 Delta R.T. 0.000 min
 Lab File: VW019516.D
 Acq: 20 Jul 2021 17:15



Tgt Ion: 65 Resp: 83755
 Ion Ratio Lower Upper
 65 100
 67 52.8 0.0 107.8



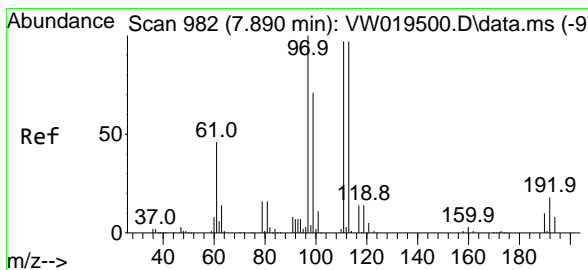
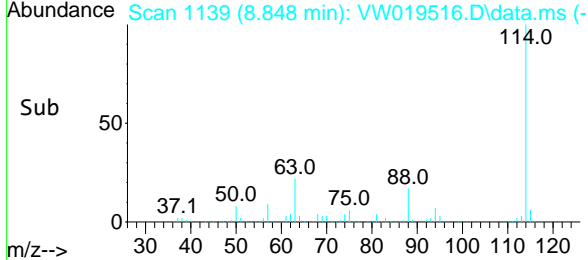
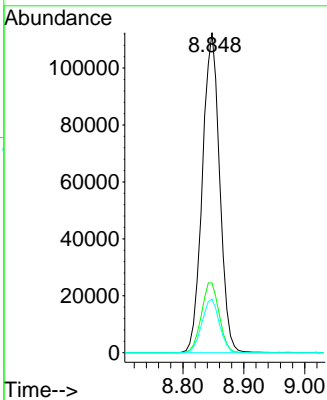
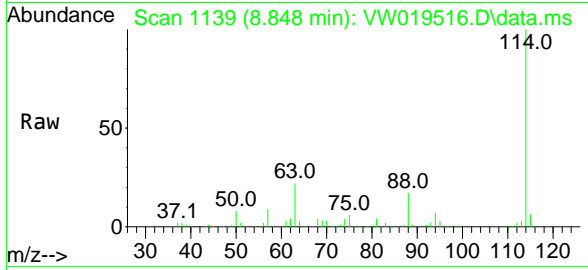


#34
 1,4-Difluorobenzene
 Concen: 50.000 ug/l
 RT: 8.848 min Scan# 1139
 Delta R.T. 0.000 min
 Lab File: VW019516.D
 Acq: 20 Jul 2021 17:15

Instrument :
 MSVOA_W
 ClientSampled :

Tgt Ion:114 Resp: 221075

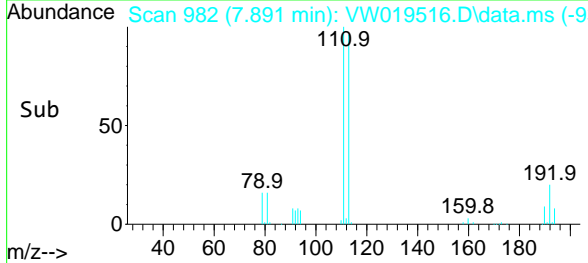
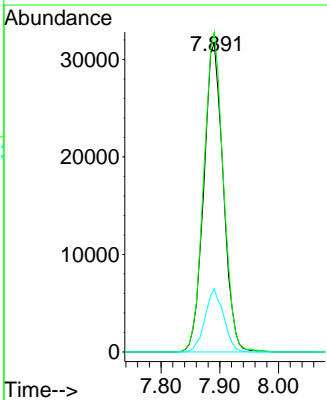
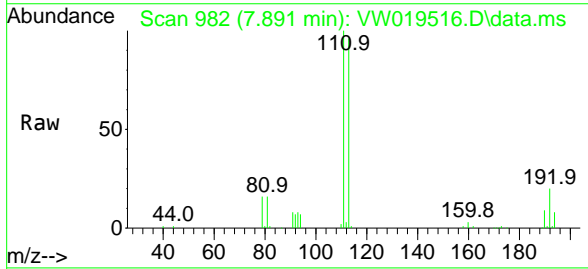
Ion	Ratio	Lower	Upper
114	100		
63	21.8	0.0	43.8
88	16.8	0.0	33.4

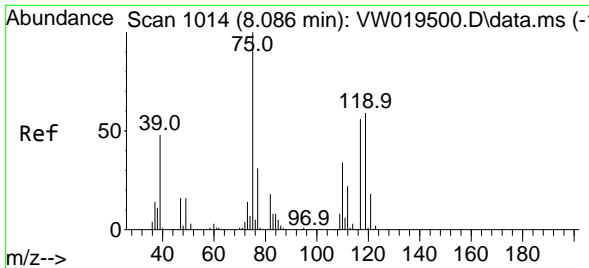


#35
 Dibromofluoromethane
 Concen: 54.125 ug/l
 RT: 7.891 min Scan# 982
 Delta R.T. 0.001 min
 Lab File: VW019516.D
 Acq: 20 Jul 2021 17:15

Tgt Ion:113 Resp: 73105

Ion	Ratio	Lower	Upper
113	100		
111	104.2	83.8	125.6
192	19.4	15.4	23.2

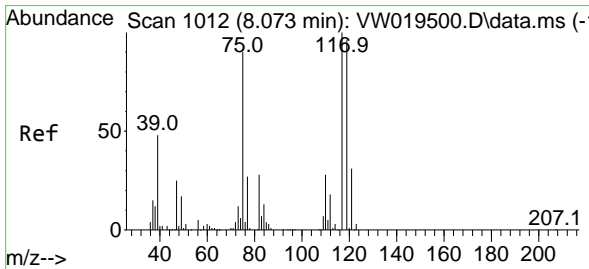
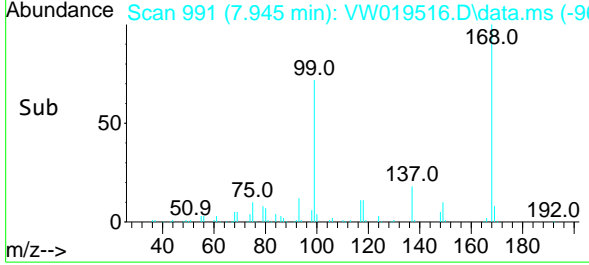
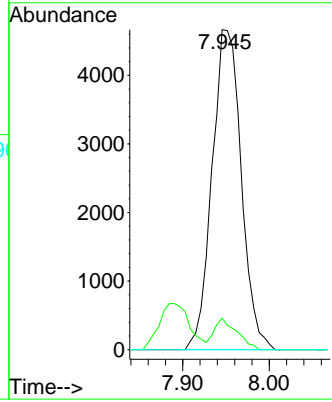
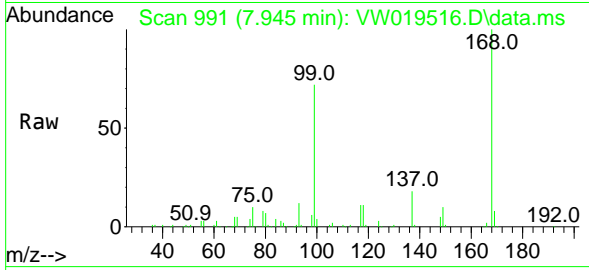




#36
 1,1-Dichloropropene
 Concen: 4.633 ug/l
 RT: 7.945 min Scan# 991
 Delta R.T. -0.140 min
 Lab File: VW019516.D
 Acq: 20 Jul 2021 17:15

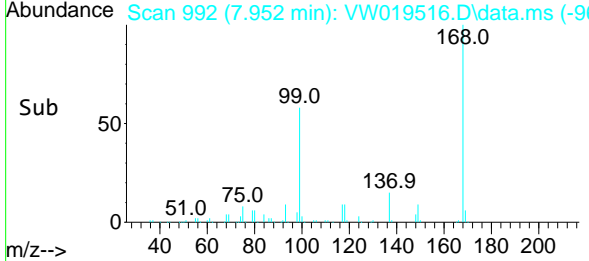
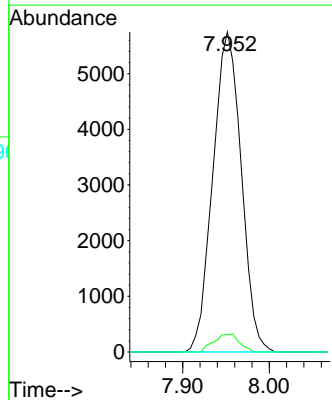
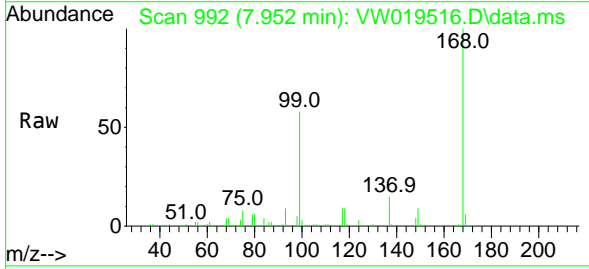
Instrument :
 MSVOA_W
 ClientSampled :

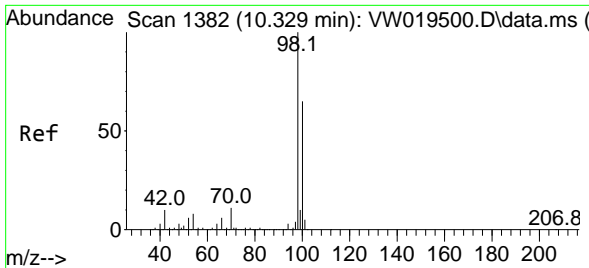
Tgt Ion	Resp	Lower	Upper
75	10920		
75	100		
110	7.6	16.6	49.7#
77	0.0	25.1	37.7#



#38
 Carbon Tetrachloride
 Concen: 6.351 ug/l
 RT: 7.952 min Scan# 992
 Delta R.T. -0.122 min
 Lab File: VW019516.D
 Acq: 20 Jul 2021 17:15

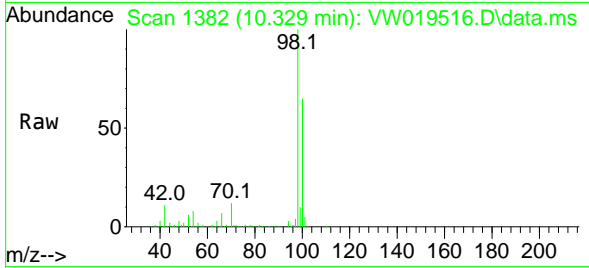
Tgt Ion	Resp	Lower	Upper
117	13077		
117	100		
119	5.5	76.7	115.1#
121	0.0	24.8	37.2#



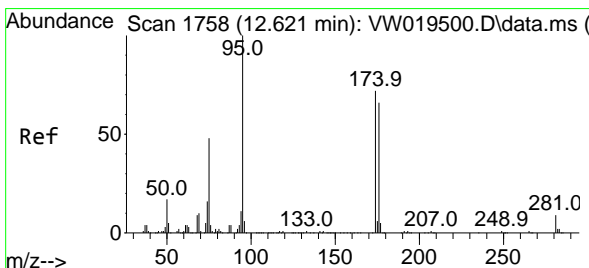
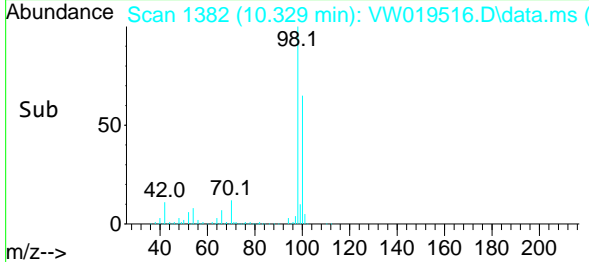
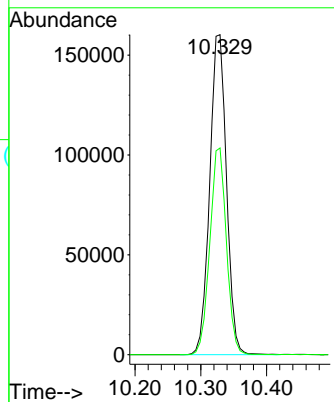


#50
 Toluene-d8
 Concen: 54.403 ug/l
 RT: 10.329 min Scan# 1382
 Delta R.T. 0.000 min
 Lab File: VW019516.D
 Acq: 20 Jul 2021 17:15

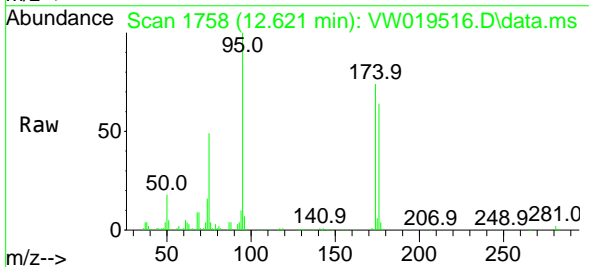
Instrument :
 MSVOA_W
 ClientSampled :



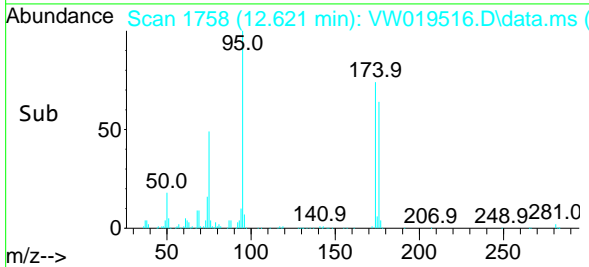
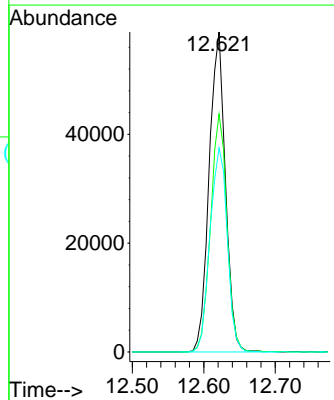
Tgt Ion: 98 Resp: 284501
 Ion Ratio Lower Upper
 98 100
 100 63.8 52.2 78.4

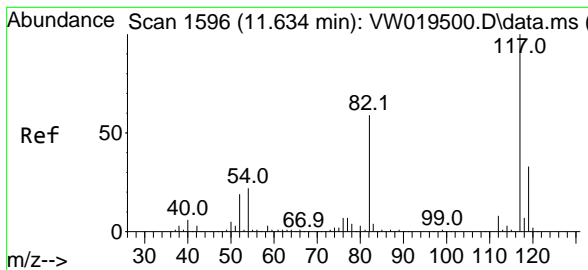


#62
 4-Bromofluorobenzene
 Concen: 47.301 ug/l
 RT: 12.621 min Scan# 1758
 Delta R.T. 0.000 min
 Lab File: VW019516.D
 Acq: 20 Jul 2021 17:15



Tgt Ion: 95 Resp: 92787
 Ion Ratio Lower Upper
 95 100
 174 74.7 0.0 146.6
 176 67.8 0.0 136.8

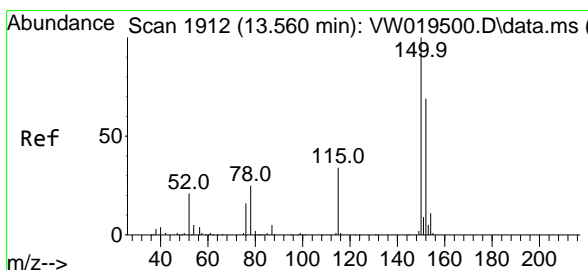
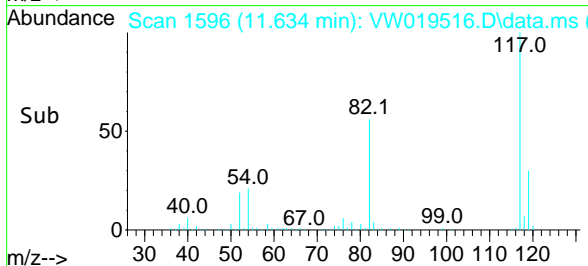
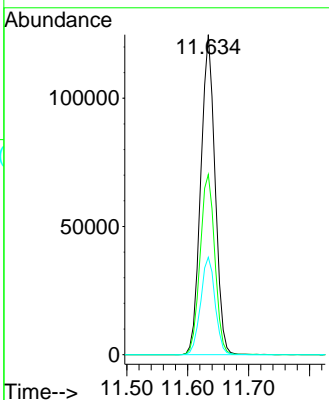
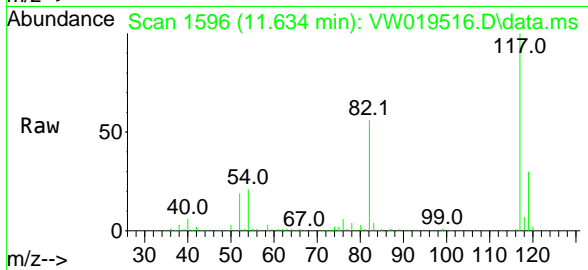




#63
 Chlorobenzene-d5
 Concen: 50.000 ug/l
 RT: 11.634 min Scan# 1596
 Delta R.T. 0.000 min
 Lab File: VW019516.D
 Acq: 20 Jul 2021 17:15

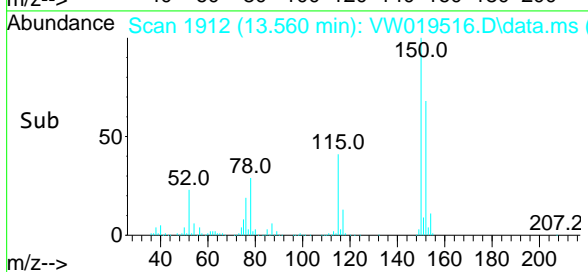
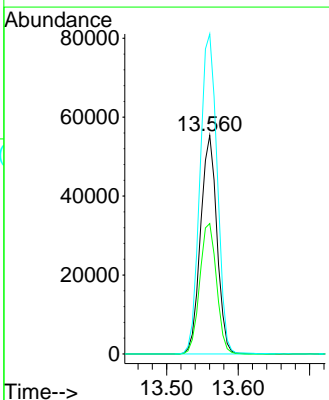
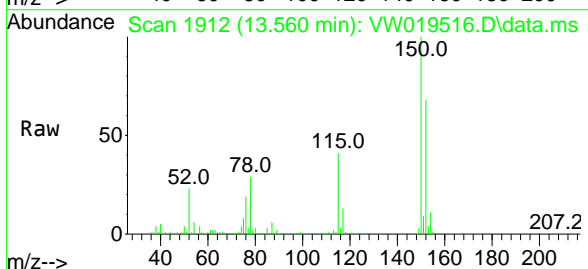
Instrument :
 MSVOA_W
 ClientSampled :

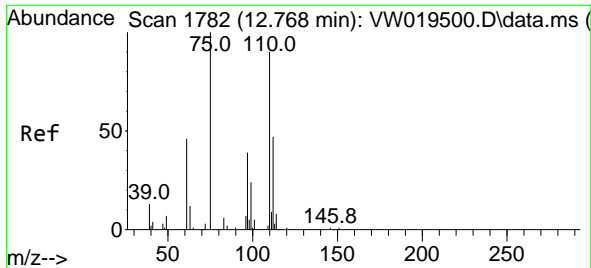
Tgt Ion	Resp	Lower	Upper
117	203222		
82	56.3	47.4	71.0
119	30.4	26.6	39.8



#72
 1,4-Dichlorobenzene-d4
 Concen: 50.000 ug/l
 RT: 13.560 min Scan# 1912
 Delta R.T. 0.000 min
 Lab File: VW019516.D
 Acq: 20 Jul 2021 17:15

Tgt Ion	Resp	Lower	Upper
152	88135		
115	61.2	30.6	91.8
150	154.0	0.0	342.4

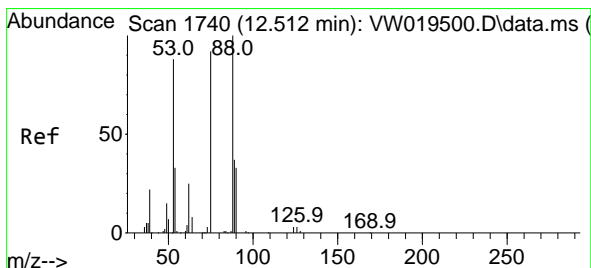
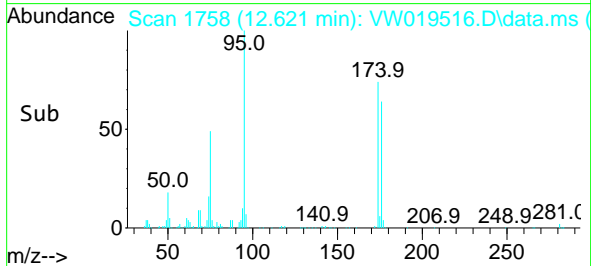
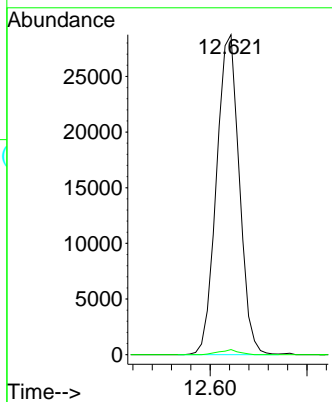
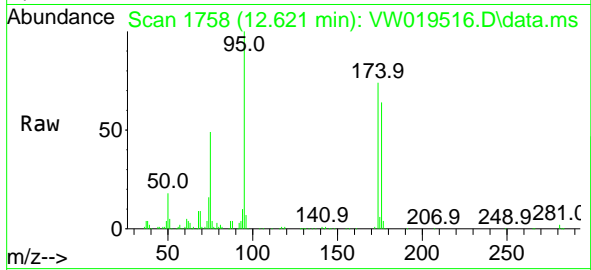




#76
 1,2,3-Trichloropropane
 Concen: 53.979 ug/l
 RT: 12.621 min Scan# 1758
 Delta R.T. -0.146 min
 Lab File: VW019516.D
 Acq: 20 Jul 2021 17:15

Instrument :
 MSVOA_W
 ClientSampled :

Tgt Ion: 75 Resp: 47019
 Ion Ratio Lower Upper
 75 100
 77 1.4 0.0 0.0#



#81
 trans-1,4-Dichloro-2-butene
 Concen: 123.018 ug/l
 RT: 12.621 min Scan# 1758
 Delta R.T. 0.110 min
 Lab File: VW019516.D
 Acq: 20 Jul 2021 17:15

Tgt Ion: 75 Resp: 47019
 Ion Ratio Lower Upper
 75 100
 53 0.1 75.8 113.8#
 89 0.0 35.7 53.5#

