

Data Path : Z:\VOASRV\HPCHEM1\MSVOA W\DATA\VW072120\  
 Data File : VW015893.D  
 Acq On : 21 Jul 2020 17:44  
 Operator : SY/VA  
 Sample : L3348-02  
 Misc : 6.42G/10ML/MSVOA W/SOIL  
 ALS Vial : 1 Sample Multiplier: 1

Instrument :  
 MSVOA\_W  
 ClientSampled :  
 GAXY8

## Integration Parameters: LSCINT.P

Integrator: RTE  
 Smoothing : OFF  
 Sampling : 1  
 Start Thrs: 0.2  
 Stop Thrs : 0

Filtering: 5  
 Min Area: 0 % of largest Peak  
 Max Peaks: 100  
 Peak Location: TOP

If leading or trailing edge < 100 prefer < Baseline drop else tangent >  
 Peak separation: 5

Method : Z:\VOASRV\HPCHEM1\MSVOA\_W\METHOD\SOM2WLM072020S.M  
 Title : VOC Analysis

Signal : TIC

peak #	R.T. min	first scan	max scan	last scan	PK TY	peak height	corr. area	corr. % max.	% of total
1	2.160	38	42	43	rBV	2034	2579	0.15%	0.018%
2	2.361	68	75	87	rVB	120056	240909	14.02%	1.682%
3	2.897	155	163	181	rVB	85508	229740	13.37%	1.604%
4	3.769	304	306	311	rVB4	512	521	0.03%	0.004%
5	4.013	334	346	359	rBV	209330	632417	36.79%	4.416%
6	4.226	379	381	386	rVB3	260	398	0.02%	0.003%
7	4.397	398	409	422	rBV2	15904	50731	2.95%	0.354%
8	4.543	432	433	436	rVB3	382	336	0.02%	0.002%
9	4.611	441	444	446	rVB2	342	347	0.02%	0.002%
10	4.672	449	454	462	rVB4	1630	4491	0.26%	0.031%
11	4.915	484	494	505	rBV2	9589	32512	1.89%	0.227%
12	5.129	526	529	530	rVV2	542	569	0.03%	0.004%
13	5.159	531	534	535	rVV3	959	1217	0.07%	0.008%
14	5.178	535	537	547	rVB3	1403	2557	0.15%	0.018%
15	5.775	629	635	637	rBV3	629	1219	0.07%	0.009%
16	5.799	637	639	646	rVV4	874	1695	0.10%	0.012%
17	5.946	655	663	670	rVV5	1589	4593	0.27%	0.032%
18	6.116	688	691	694	rBV3	403	612	0.04%	0.004%
19	6.714	785	789	794	rBV2	360	686	0.04%	0.005%
20	6.878	810	816	817	rBV3	808	1339	0.08%	0.009%
21	7.086	839	850	859	rBV	49953	144906	8.43%	1.012%
22	7.256	871	878	890	rVB	30263	74974	4.36%	0.524%
23	7.512	918	920	921	rBV	487	378	0.02%	0.003%
24	7.543	921	925	928	rVV4	834	1521	0.09%	0.011%
25	7.653	932	943	955	rBV	288956	700172	40.74%	4.890%
26	7.957	985	993	998	rBV3	1133	2326	0.14%	0.016%
27	8.037	998	1006	1016	rVB4	4026	10323	0.60%	0.072%
28	8.281	1030	1046	1062	rBV2	580633	1718765	100.00%	12.003%
29	8.421	1062	1069	1078	rVB4	3051	8478	0.49%	0.059%
30	8.567	1090	1093	1097	rVB2	430	481	0.03%	0.003%
31	8.634	1100	1104	1107	rVB4	464	733	0.04%	0.005%
32	8.695	1107	1114	1116	rBV4	722	1273	0.07%	0.009%
33	8.848	1126	1139	1156	rBV	609362	1196224	69.60%	8.354%
34	9.037	1163	1170	1174	rBV4	2529	5080	0.30%	0.035%

Data Path : Z:\VOASRV\HPCHEM1\MSVOA W\DATA\VW072120\  
 Data File : VW015893.D  
 Acq On : 21 Jul 2020 17:44  
 Operator : SY/VA  
 Sample : L3348-02  
 Misc : 6.42G/10ML/MSVOA W/SOIL  
 ALS Vial : 1 Sample Multiplier: 1

Instrument :  
 MSVOA\_W  
 ClientSampleId :  
 GAXY8

## Integration Parameters: LSCINT.P

Integrator: RTE  
 Smoothing : OFF  
 Sampling : 1  
 Start Thrs: 0.2  
 Stop Thrs : 0

Filtering: 5  
 Min Area: 0 % of largest Peak  
 Max Peaks: 100  
 Peak Location: TOP

If leading or trailing edge < 100 prefer < Baseline drop else tangent >  
 Peak separation: 5

Method : Z:\VOASRV\HPCHEM1\MSVOA\_W\METHOD\SOM2WLM072020S.M  
 Title : VOC Analysis

35	9.195	1193	1196	1198	rBV2	437	329	0.02%	0.002%
36	9.280	1198	1210	1228	rBV	388359	837204	48.71%	5.847%
37	9.469	1239	1241	1243	rBV	426	374	0.02%	0.003%
38	9.610	1253	1264	1271	rBV	34980	69417	4.04%	0.485%
39	9.750	1283	1287	1295	rVB3	2134	4057	0.24%	0.028%
40	9.896	1308	1311	1313	rBV3	402	586	0.03%	0.004%
41	9.945	1313	1319	1326	rVB4	5840	11457	0.67%	0.080%
42	10.036	1326	1334	1349	rBV	213583	410647	23.89%	2.868%
43	10.164	1351	1355	1358	rVB2	1448	2153	0.13%	0.015%
44	10.213	1358	1363	1368	rBV6	6126	13126	0.76%	0.092%
45	10.323	1373	1381	1389	rBV	792690	1451318	84.44%	10.135%
46	10.390	1389	1392	1399	rVB	9646	16428	0.96%	0.115%
47	10.494	1403	1409	1417	rBV4	4978	11624	0.68%	0.081%
48	10.579	1417	1423	1429	rBV	137785	253916	14.77%	1.773%
49	10.664	1433	1437	1440	rVV	29457	52316	3.04%	0.365%
50	10.707	1440	1444	1453	rVB	58156	103682	6.03%	0.724%
51	10.811	1458	1461	1466	rVB3	4493	7530	0.44%	0.053%
52	10.866	1466	1470	1472	rVB5	512	675	0.04%	0.005%
53	10.926	1472	1480	1491	rBV	227991	400697	23.31%	2.798%
54	11.024	1492	1496	1500	rVB6	2884	3855	0.22%	0.027%
55	11.073	1501	1504	1507	rVB5	1531	1902	0.11%	0.013%
56	11.115	1507	1511	1513	rBV	5774	8581	0.50%	0.060%
57	11.225	1522	1529	1534	rBV5	8500	21589	1.26%	0.151%
58	11.286	1534	1539	1543	rVV2	16608	30127	1.75%	0.210%
59	11.329	1543	1546	1551	rVB2	10668	16876	0.98%	0.118%
60	11.371	1551	1553	1558	rVB6	959	1122	0.07%	0.008%
61	11.439	1558	1564	1574	rVB	43960	77847	4.53%	0.544%
62	11.560	1574	1584	1587	rBV5	4986	15371	0.89%	0.107%
63	11.634	1589	1596	1609	rVV	847024	1445771	84.12%	10.097%
64	11.768	1614	1618	1622	rVB2	8353	12576	0.73%	0.088%
65	11.823	1622	1627	1633	rBV5	8626	20616	1.20%	0.144%
66	11.896	1633	1639	1646	rVB5	12454	32730	1.90%	0.229%
67	11.975	1646	1652	1657	rBV4	10621	21956	1.28%	0.153%
68	12.042	1657	1663	1670	rVB2	10913	20320	1.18%	0.142%
69	12.140	1672	1679	1685	rBV4	18507	40379	2.35%	0.282%
70	12.201	1685	1689	1691	rBV2	6170	9347	0.54%	0.065%
71	12.304	1701	1706	1707	rBV2	7033	9913	0.58%	0.069%

Data Path : Z:\VOASRV\HPCHEM1\MSVOA W\DATA\VW072120\  
 Data File : VW015893.D  
 Acq On : 21 Jul 2020 17:44  
 Operator : SY/VA  
 Sample : L3348-02  
 Misc : 6.42G/10ML/MSVOA W/SOIL  
 ALS Vial : 1 Sample Multiplier: 1

Instrument :  
 MSVOA\_W  
 ClientSampleId :  
 GAXY8

## Integration Parameters: LSCINT.P

Integrator: RTE  
 Smoothing : OFF Filtering: 5  
 Sampling : 1 Min Area: 0 % of largest Peak  
 Start Thrs: 0.2 Max Peaks: 100  
 Stop Thrs : 0 Peak Location: TOP

If leading or trailing edge < 100 prefer < Baseline drop else tangent >  
 Peak separation: 5

Method : Z:\VOASRV\HPCHEM1\MSVOA\_W\METHOD\SOM2WLM072020S.M  
 Title : VOC Analysis

72	12.341	1709	1712	1721	rVB7	13076	34912	2.03%	0.244%
73	12.451	1721	1730	1737	rBV7	6893	22213	1.29%	0.155%
74	12.560	1745	1748	1751	rBV2	4140	6015	0.35%	0.042%
75	12.609	1751	1756	1763	rVB2	189453	313047	18.21%	2.186%
76	12.694	1763	1770	1777	rBV	313026	519246	30.21%	3.626%
77	12.865	1791	1798	1802	rBV4	10659	24288	1.41%	0.170%
78	12.926	1805	1808	1818	rVB9	9982	26666	1.55%	0.186%
79	13.085	1831	1834	1839	rVB5	7977	12446	0.72%	0.087%
80	13.188	1845	1851	1858	rBV9	5280	12870	0.75%	0.090%
81	13.261	1860	1863	1865	rBV3	3778	5411	0.31%	0.038%
82	13.389	1880	1884	1887	rBV5	5153	8053	0.47%	0.056%
83	13.481	1897	1899	1903	rVB4	2949	3094	0.18%	0.022%
84	13.560	1905	1912	1920	rVB	844323	1339549	77.94%	9.355%
85	13.652	1921	1927	1939	rVB	50430	93933	5.47%	0.656%
86	13.853	1953	1960	1970	rVB	722009	1195313	69.54%	8.347%
87	14.072	1990	1996	2009	rVB	54286	96019	5.59%	0.671%
88	14.188	2011	2015	2020	rBV6	3011	5422	0.32%	0.038%
89	14.280	2024	2030	2031	rBV4	3010	5299	0.31%	0.037%
90	14.334	2034	2039	2043	rVV6	8438	16188	0.94%	0.113%
91	14.383	2043	2047	2051	rVB6	8043	11797	0.69%	0.082%
92	14.548	2070	2074	2081	rVB7	7481	13120	0.76%	0.092%
93	14.694	2096	2098	2109	rVB9	2560	7047	0.41%	0.049%
94	14.968	2140	2143	2146	rBV5	2537	3846	0.22%	0.027%
95	15.109	2162	2166	2171	rBV5	2701	4998	0.29%	0.035%
96	15.176	2173	2177	2183	rVB4	5179	10730	0.62%	0.075%
97	15.499	2225	2230	2236	rVB	4986	9081	0.53%	0.063%
98	15.743	2265	2270	2275	rBV6	1585	3556	0.21%	0.025%
99	16.176	2338	2341	2345	rBV4	1023	1476	0.09%	0.010%
100	16.371	2371	2373	2374	rBV2	591	329	0.02%	0.002%

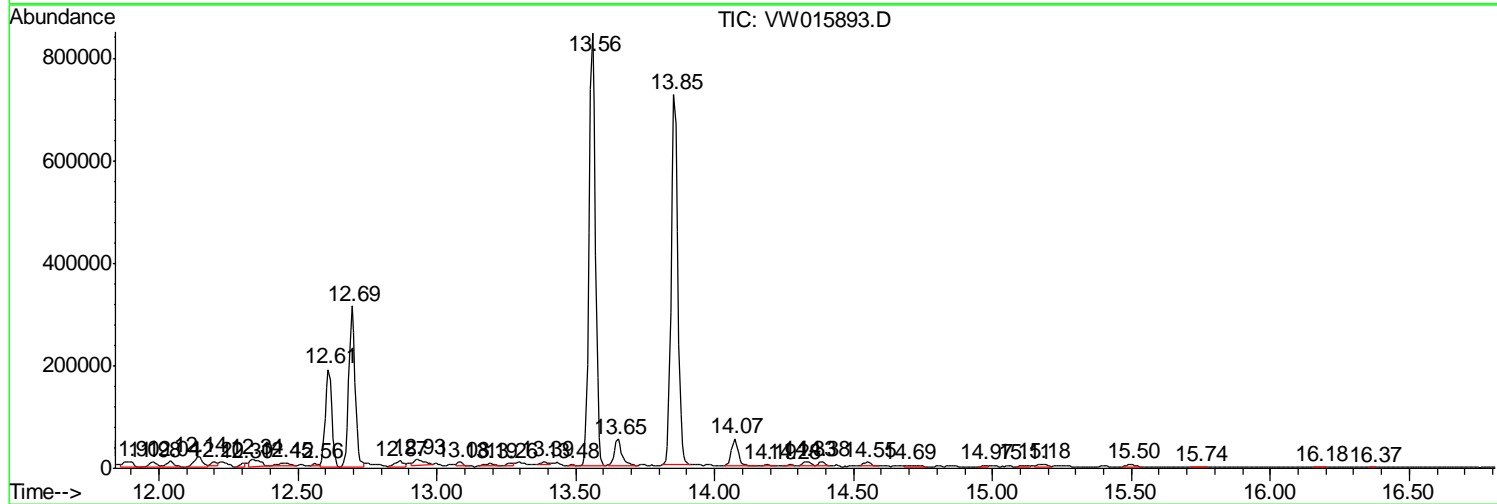
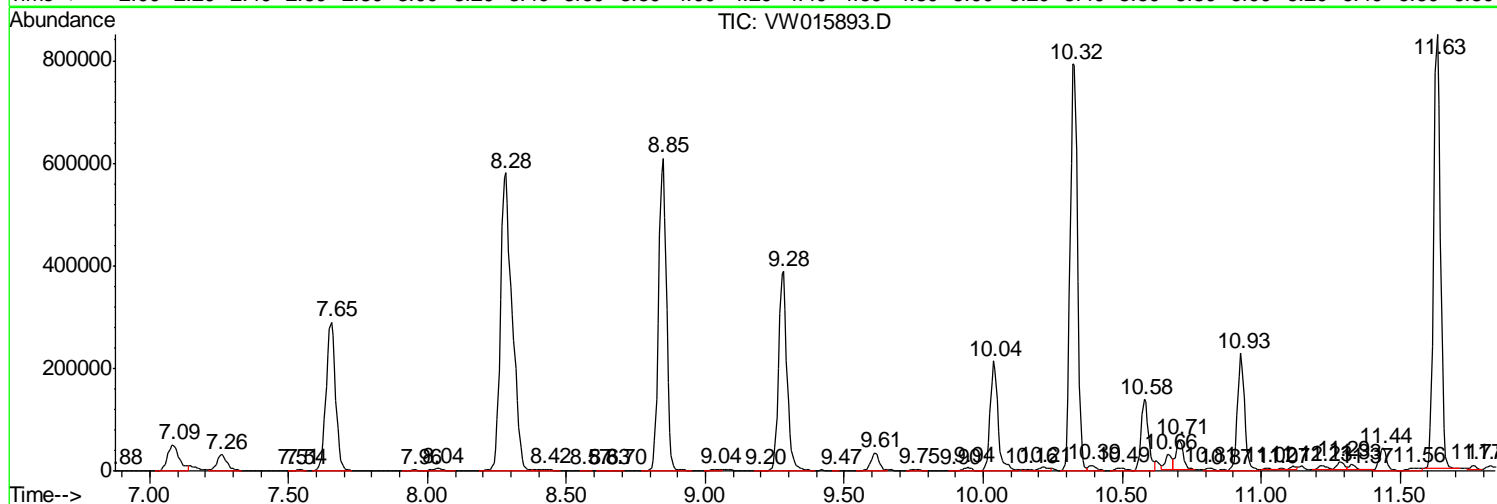
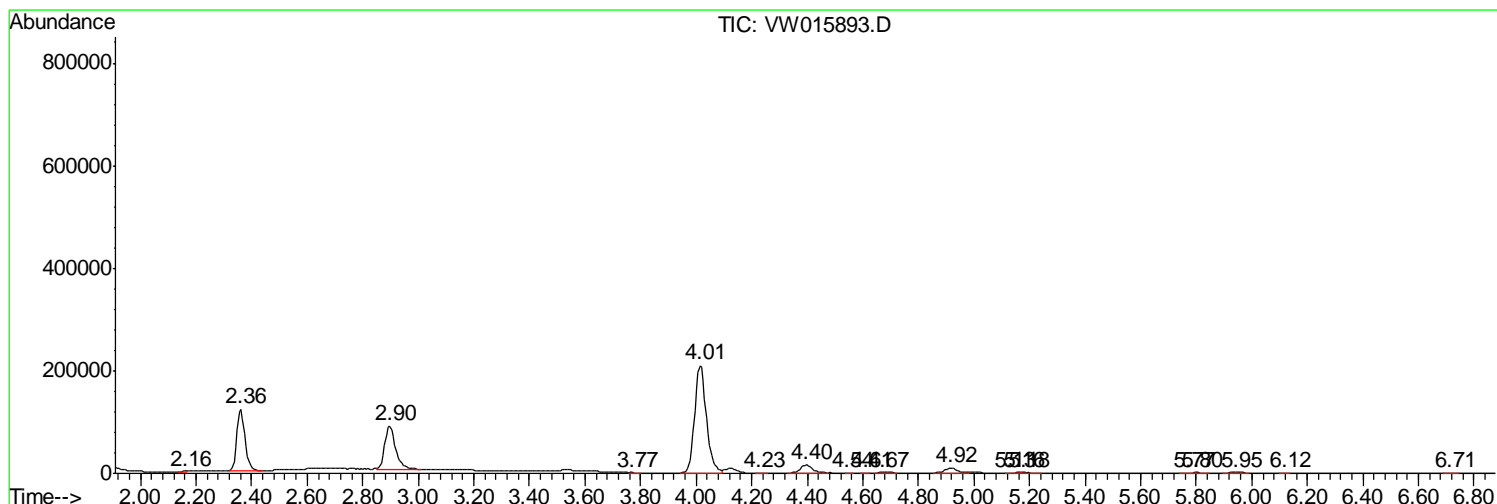
Sum of corrected areas: 14319480

Data Path : Z:\VOASRV\HPCHEM1\MSVOA W\DATA\VW072120\  
 Data File : VW015893.D  
 Acq On : 21 Jul 2020 17:44  
 Operator : SY/VA  
 Sample : L3348-02  
 Misc : 6.42G/10ML/MSVOA W/SOIL  
 ALS Vial : 1 Sample Multiplier: 1

Instrument :  
 MSVOA\_W  
 ClientSampleId :  
 GAXY8

Quant Method : Z:\VOASRV\HPCHEM1\MSVOA\_W\METHOD\SOM2WLM072020S.M  
 Quant Title : VOC Analysis

TIC Library : C:\DATABASE\NIST11.L  
 TIC Integration Parameters: LSCINT.P



Data Path : Z:\VOASRV\HPCHEM1\MSVOA W\DATA\VW072120\  
 Data File : VW015893.D  
 Acq On : 21 Jul 2020 17:44  
 Operator : SY/VA  
 Sample : L3348-02  
 Misc : 6.42G/10ML/MSVOA W/SOIL  
 ALS Vial : 1 Sample Multiplier: 1

Instrument :  
 MSVOA\_W  
 ClientSampleID :  
 GAXY8

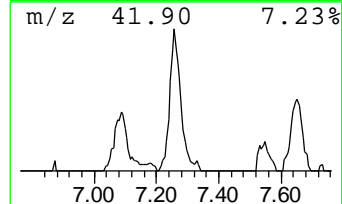
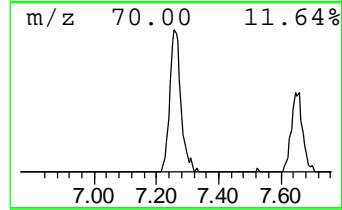
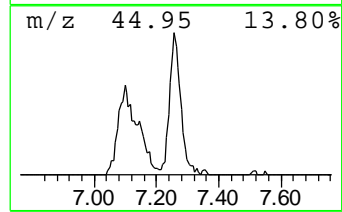
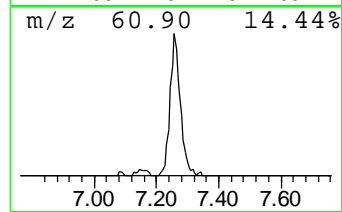
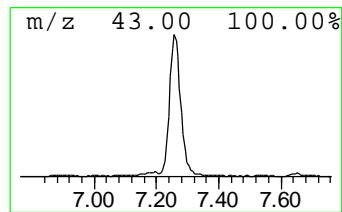
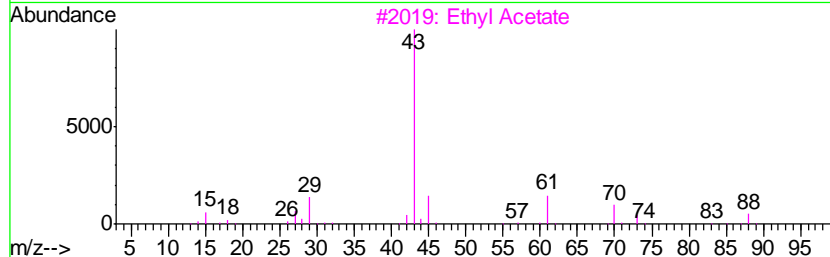
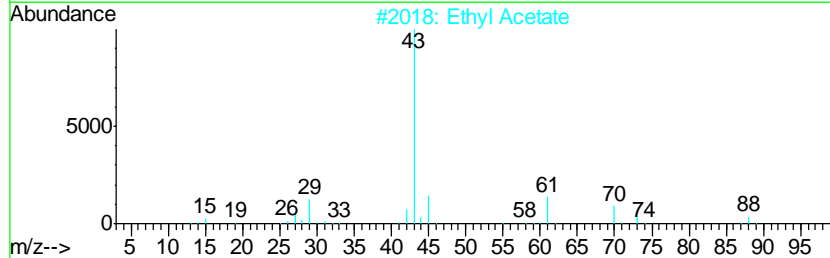
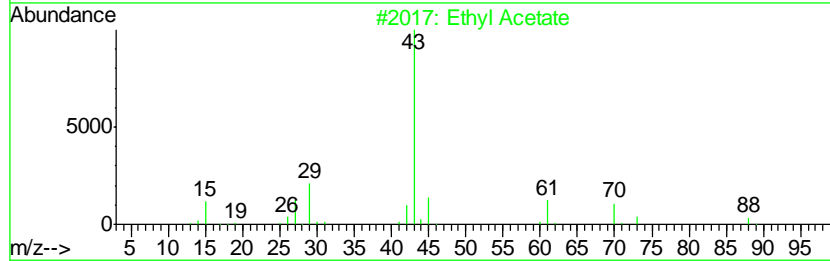
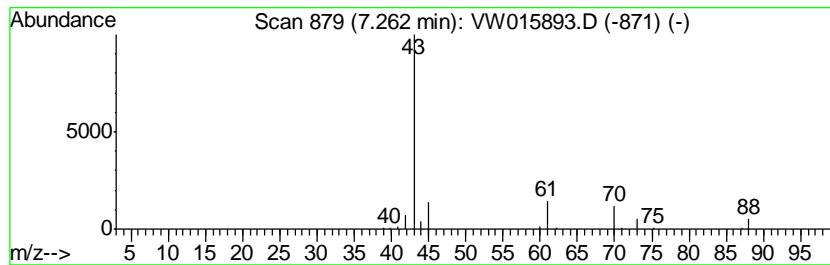
Quant Method : Z:\VOASRV\HPCHEM1\MSVOA\_W\METHOD\SOM2WLM072020S.M  
 Quant Title : VOC Analysis

TIC Library : C:\DATABASE\NIST11.L  
 TIC Integration Parameters: LSCINT.P

\*\*\*\*\*  
 Peak Number 1 Ethyl Acetate Concentration Rank 6

R.T.	EstConc	Area	Relative to ISTD	R.T.
7.26	1.57 ug/L	74974	1,4-Difluorobenzene	8.85

Hit#	of	Tentative ID	MW	MolForm	CAS#	Qual
1	5	Ethyl Acetate	88	C4H8O2	000141-78-6	86
2		Ethyl Acetate	88	C4H8O2	000141-78-6	86
3		Ethyl Acetate	88	C4H8O2	000141-78-6	86
4		Ethyl Acetate	88	C4H8O2	000141-78-6	86
5		Propanoic acid, 2-methyl-	88	C4H8O2	000079-31-2	37



Data Path : Z:\VOASRV\HPCHEM1\MSVOA W\DATA\VW072120\  
 Data File : VW015893.D  
 Acq On : 21 Jul 2020 17:44  
 Operator : SY/VA  
 Sample : L3348-02  
 Misc : 6.42G/10ML/MSVOA W/SOIL  
 ALS Vial : 1 Sample Multiplier: 1

Instrument :  
 MSVOA\_W  
 ClientSampled :  
 GAXY8

Quant Method : Z:\VOASRV\HPCHEM1\MSVOA\_W\METHOD\SOM2WLM072020S.M  
 Quant Title : VOC Analysis

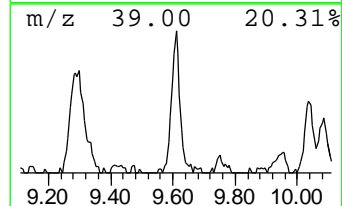
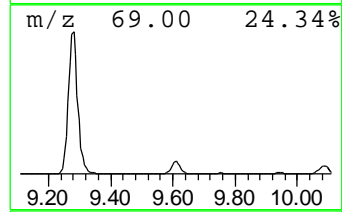
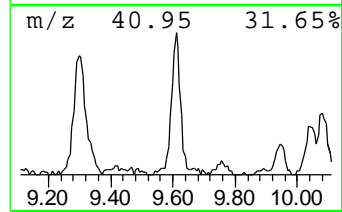
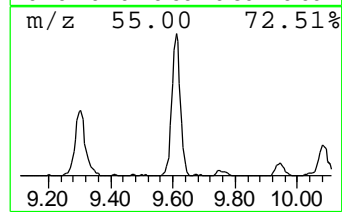
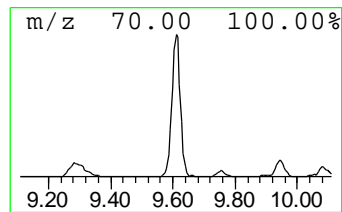
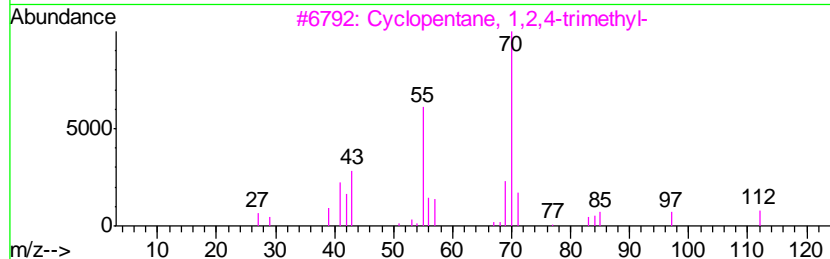
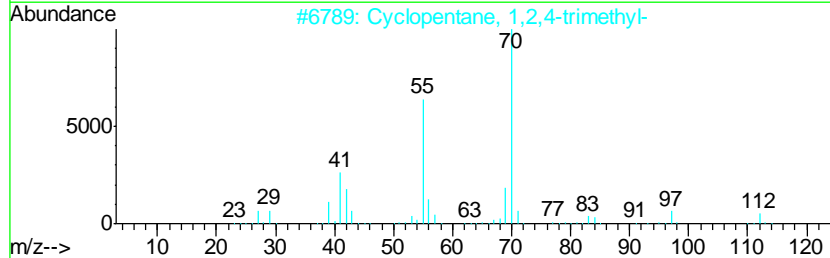
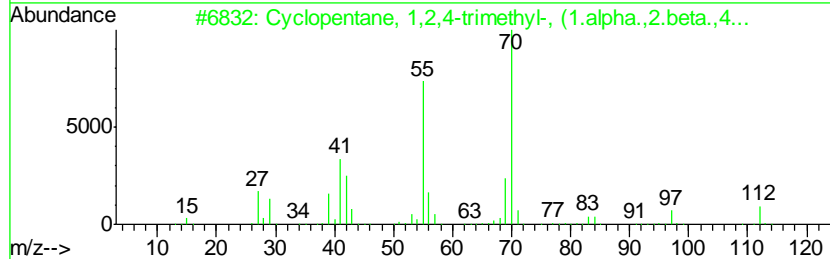
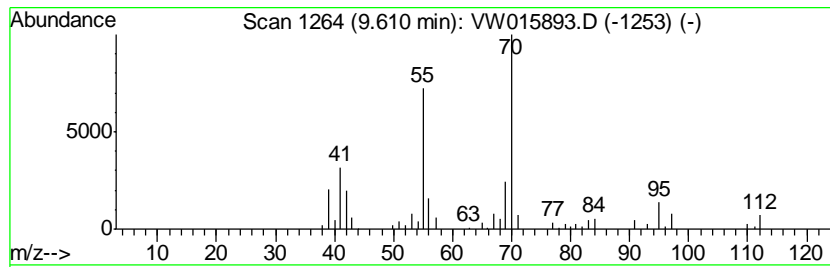
TIC Library : C:\DATABASE\NIST11.L  
 TIC Integration Parameters: LSCINT.P

\*\*\*\*\*  
 Peak Number 2 (DEL) Alkane: Cyclic9.61 Concentration Rank 7

R.T.	EstConc	Area	Relative to ISTD	R.T.
9.61	1.45 ug/L	69417	1,4-Difluorobenzene	8.85

Hit#	of	Tentative ID	MW	MolForm	CAS#	Qual
1	5	Cyclopentane, 1,2,4-trimethyl-, ...	112	C8H16	016883-48-0	93
2		Cyclopentane, 1,2,4-trimethyl-	112	C8H16	002815-58-9	90
3		Cyclopentane, 1,2,4-trimethyl-	112	C8H16	002815-58-9	86
4		Cyclopentane, 1,2,4-trimethyl-, ...	112	C8H16	004850-28-6	80
5		Heptane, 3-methylene-	112	C8H16	001632-16-2	80



Data Path : Z:\VOASRV\HPCHEM1\MSVOA W\DATA\VW072120\  
 Data File : VW015893.D  
 Acq On : 21 Jul 2020 17:44  
 Operator : SY/VA  
 Sample : L3348-02  
 Misc : 6.42G/10ML/MSVOA W/SOIL  
 ALS Vial : 1 Sample Multiplier: 1

Instrument :  
 MSVOA\_W  
 ClientSampleID :  
 GAXY8

Quant Method : Z:\VOASRV\HPCHEM1\MSVOA\_W\METHOD\SOM2WLM072020S.M  
 Quant Title : VOC Analysis

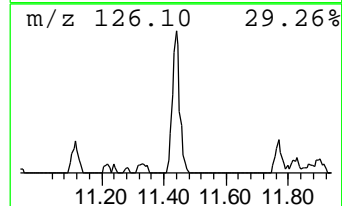
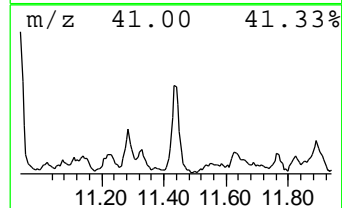
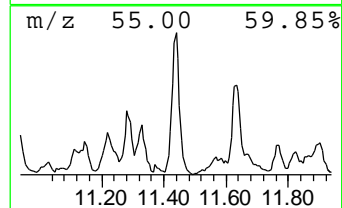
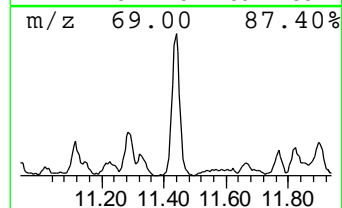
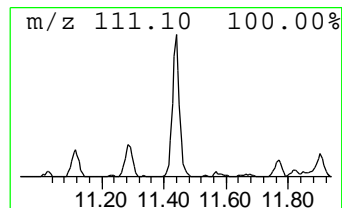
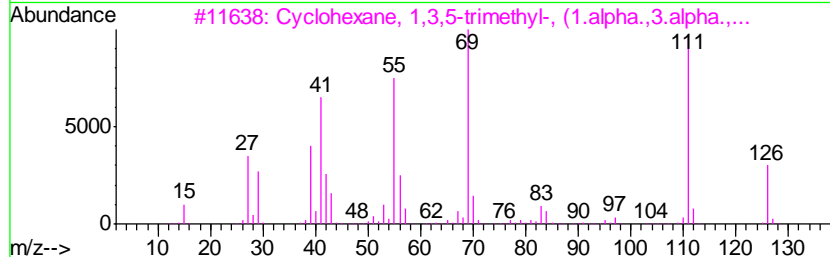
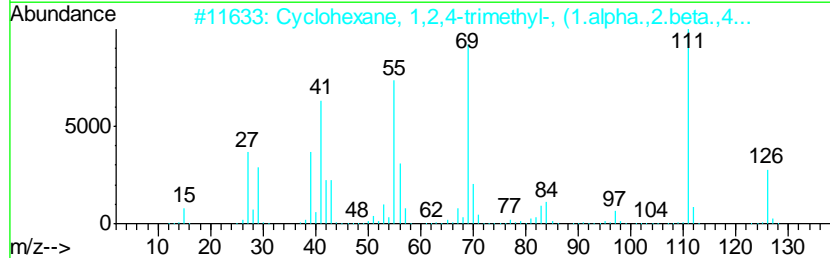
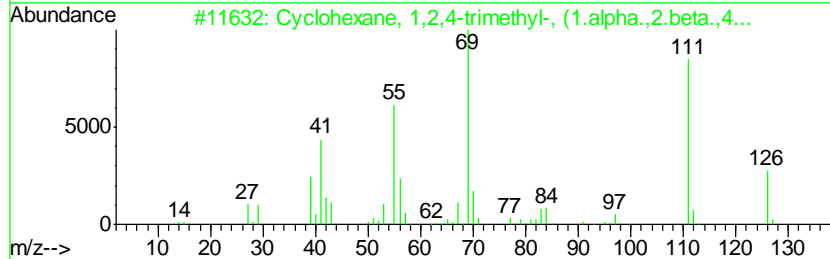
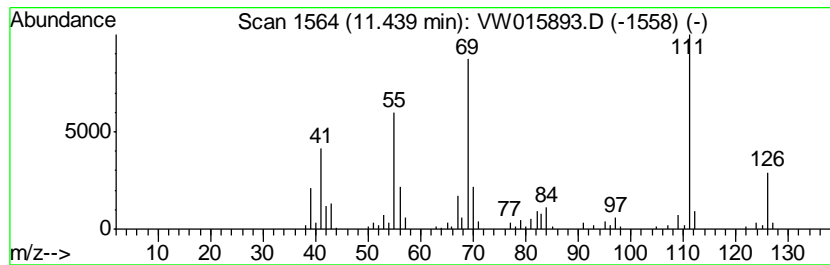
TIC Library : C:\DATABASE\NIST11.L  
 TIC Integration Parameters: LSCINT.P

\*\*\*\*\*  
 Peak Number 5 (DEL) Alkane: Cyclic11.44 Concentration Rank 8

R.T.	EstConc	Area	Relative to ISTD	R.T.
11.44	1.35 ug/L	77847	Chlorobenzene-d5	11.63

Hit#	of	Tentative ID	MW	MolForm	CAS#	Qual
1	5	Cyclohexane, 1,2,4-trimethyl-, (...	126	C9H18	007667-60-9	94
2		Cyclohexane, 1,2,4-trimethyl-, (...	126	C9H18	007667-60-9	93
3		Cyclohexane, 1,3,5-trimethyl-, (...	126	C9H18	001795-26-2	90
4		Cyclohexane, 1,3,5-trimethyl-	126	C9H18	001839-63-0	87
5		Cyclohexane, 1,2,4-trimethyl-	126	C9H18	002234-75-5	87



Data Path : Z:\VOASRV\HPCHEM1\MSVOA W\DATA\VW072120\  
 Data File : VW015893.D  
 Acq On : 21 Jul 2020 17:44  
 Operator : SY/VA  
 Sample : L3348-02  
 Misc : 6.42G/10ML/MSVOA W/SOIL  
 ALS Vial : 1 Sample Multiplier: 1

Instrument :  
 MSVOA\_W  
 ClientSampled :  
 GAXY8

Quant Method : Z:\VOASRV\HPCHEM1\MSVOA\_W\METHOD\SOM2WLM072020S.M  
 Quant Title : VOC Analysis

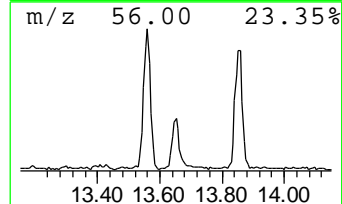
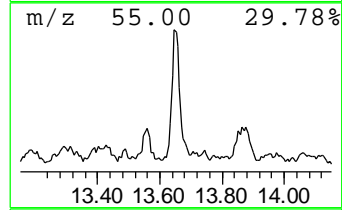
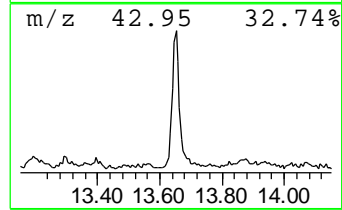
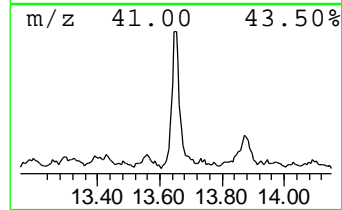
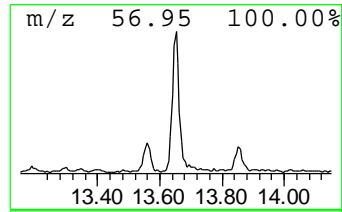
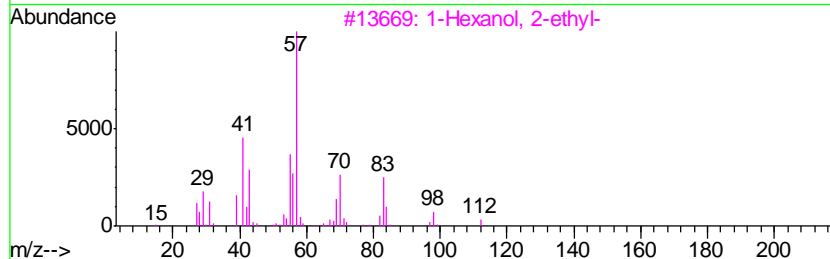
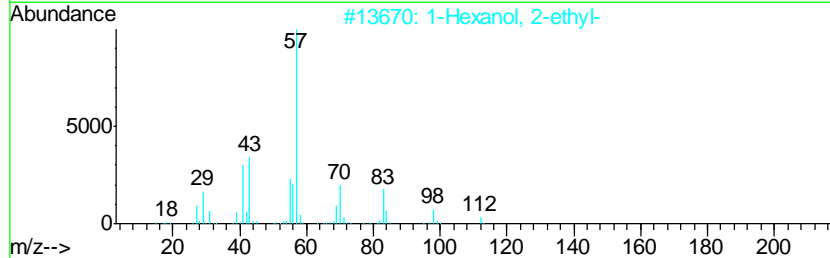
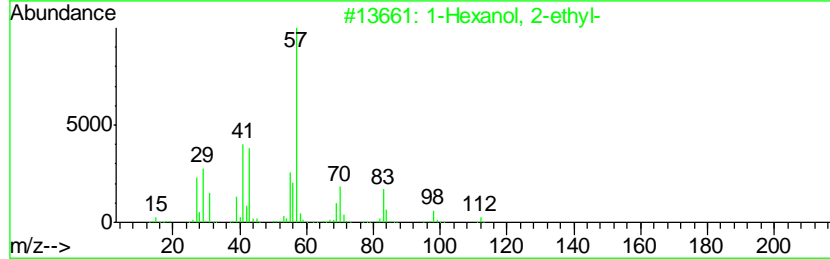
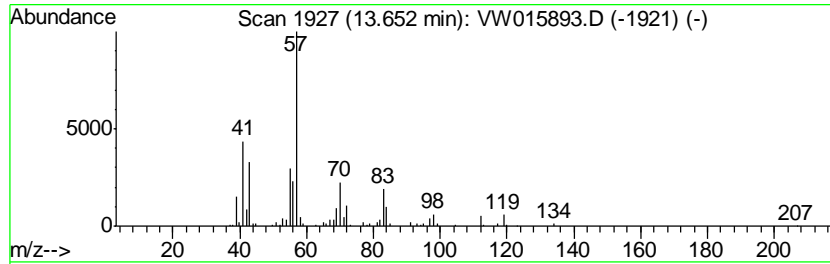
TIC Library : C:\DATABASE\NIST11.L  
 TIC Integration Parameters: LSCINT.P

\*\*\*\*\*  
 Peak Number 7 1-Hexanol, 2-ethyl- Concentration Rank 5

R.T.	EstConc	Area	Relative to ISTD	R.T.
13.65	1.75 ug/L	93933	1,4-Dichlorobenzene-d4	13.56

Hit#	of	Tentative ID	MW	MolForm	CAS#	Qual
1	5	1-Hexanol, 2-ethyl-	130	C8H18O	000104-76-7	72
2		1-Hexanol, 2-ethyl-	130	C8H18O	000104-76-7	64
3		1-Hexanol, 2-ethyl-	130	C8H18O	000104-76-7	59
4		2-Propyl-1-pentanol	130	C8H18O	058175-57-8	53
5		2-Propyl-1-pentanol	130	C8H18O	058175-57-8	50





Data Path : Z:\VOASRV\HPCHEM1\MSVOA\_W\DATA\VW072120\  
Data File : VW015893.D  
Acq On : 21 Jul 2020 17:44  
Operator : SY/VA  
Sample : L3348-02  
Misc : 6.42G/10ML/MSVOA\_W/SOIL  
ALS Vial : 1 Sample Multiplier: 1

Instrument :  
MSVOA\_W  
ClientSampleId :  
GAXY8

Quant Method : Z:\VOASRV\HPCHEM1\MSVOA\_W\METHOD\SOM2WLM072020S.M  
Quant Title : VOC Analysis

TIC Library : C:\DATABASE\NIST11.L  
TIC Integration Parameters: LSCINT.P

TIC Top Hit name	RT	EstConc	Units	Response	--Internal Standard--			
					#	RT	Resp	Conc
Ethyl Acetate	7.26	1.6	ug/L	74974	1	8.85	1196220	25.0
(DEL) Alkane: Cyc...	9.61	1.5	ug/L	69417	1	8.85	1196220	25.0
(DEL) Alkane: Cyc...	11.44	1.4	ug/L	77847	2	11.63	1445770	25.0
1-Hexanol, 2-ethyl-	13.65	1.8	ug/L	93933	3	13.56	1339550	25.0