

Data Path : Z:\VOASRV\HPCHEM1\MSVOA W\DATA\VW072220\
 Data File : VW015910.D
 Acq On : 22 Jul 2020 17:56
 Operator : SY/VA
 Sample : L3388-16
 Misc : 4.22G/10ML/MSVOA W/SOIL
 ALS Vial : 1 Sample Multiplier: 1

Instrument :
 MSVOA_W
 ClientSampleId :
 COAE3

Integration Parameters: LSCINT.P

Integrator: RTE
 Smoothing : OFF
 Sampling : 1
 Start Thrs: 0.2
 Stop Thrs : 0

Filtering: 5
 Min Area: 0 % of largest Peak
 Max Peaks: 100
 Peak Location: TOP

If leading or trailing edge < 100 prefer < Baseline drop else tangent >
 Peak separation: 5

Method : Z:\VOASRV\HPCHEM1\MSVOA_W\METHOD\SOM2WLM072020S.M
 Title : VOC Analysis

Signal : TIC

peak #	R.T. min	first scan	max scan	last scan	PK TY	peak height	corr. area	corr. % max.	% of total
1	2.355	68	74	88	rVB	108168	214147	16.75%	2.451%
2	2.891	155	162	179	rVB	66021	170778	13.35%	1.955%
3	3.806	310	312	313	rBV	369	353	0.03%	0.004%
4	3.915	327	330	332	rBV	341	439	0.03%	0.005%
5	4.013	334	346	365	rBV	170142	513653	40.17%	5.879%
6	4.409	403	411	415	rBV5	777	1980	0.15%	0.023%
7	4.671	452	454	455	rBV2	307	323	0.03%	0.004%
8	4.915	483	494	508	rBV	21172	72141	5.64%	0.826%
9	5.098	519	524	525	rBV2	374	428	0.03%	0.005%
10	5.116	525	527	529	rBV3	272	301	0.02%	0.003%
11	5.177	534	537	538	rVV3	450	603	0.05%	0.007%
12	5.202	540	541	548	rVB2	339	449	0.04%	0.005%
13	5.586	599	604	605	rBV2	193	307	0.02%	0.004%
14	5.757	626	632	634	rBV2	313	661	0.05%	0.008%
15	5.781	634	636	639	rVB3	438	333	0.03%	0.004%
16	5.939	653	662	674	rVB3	7443	22600	1.77%	0.259%
17	7.086	840	850	856	rBV	45377	127008	9.93%	1.454%
18	7.439	906	908	912	rBV2	303	307	0.02%	0.004%
19	7.653	931	943	956	rBV	205988	501146	39.19%	5.736%
20	7.951	987	992	995	rBV2	554	857	0.07%	0.010%
21	8.281	1032	1046	1061	rBV2	423627	1278803	100.00%	14.637%
22	8.402	1063	1066	1070	rVV4	620	809	0.06%	0.009%
23	8.549	1088	1090	1095	rVB2	268	398	0.03%	0.005%
24	8.628	1101	1103	1109	rVB3	420	650	0.05%	0.007%
25	8.689	1109	1113	1115	rBV2	659	950	0.07%	0.011%
26	8.848	1130	1139	1149	rBV	426081	858047	67.10%	9.821%
27	9.049	1171	1172	1174	rVV	338	276	0.02%	0.003%
28	9.079	1174	1177	1181	rVB2	1012	1398	0.11%	0.016%
29	9.280	1200	1210	1221	rBV	268698	550883	43.08%	6.305%
30	9.671	1268	1274	1280	rVB4	843	1566	0.12%	0.018%
31	9.756	1284	1288	1290	rVB2	241	278	0.02%	0.003%
32	9.853	1301	1304	1307	rVB2	430	494	0.04%	0.006%
33	9.963	1320	1322	1325	rBV	275	344	0.03%	0.004%
34	10.036	1325	1334	1346	rBV	127368	228775	17.89%	2.619%

Data Path : Z:\VOASRV\HPCHEM1\MSVOA W\DATA\VW072220\
 Data File : VW015910.D
 Acq On : 22 Jul 2020 17:56
 Operator : SY/VA
 Sample : L3388-16
 Misc : 4.22G/10ML/MSVOA W/SOIL
 ALS Vial : 1 Sample Multiplier: 1

Instrument :
 MSVOA_W
 ClientSampleId :
 C0AE3

Integration Parameters: LSCINT.P

Integrator: RTE
 Smoothing : OFF
 Sampling : 1
 Start Thrs: 0.2
 Stop Thrs : 0

Filtering: 5
 Min Area: 0 % of largest Peak
 Max Peaks: 100
 Peak Location: TOP

If leading or trailing edge < 100 prefer < Baseline drop else tangent >
 Peak separation: 5

Method : Z:\VOASRV\HPCHEM1\MSVOA_W\METHOD\SOM2WLM072020S.M
 Title : VOC Analysis

35	10.219	1360	1364	1368	rVB4	353	479	0.04%	0.005%
36	10.329	1373	1382	1390	rBV	542846	964828	75.45%	11.044%
37	10.475	1403	1406	1409	rVB5	496	521	0.04%	0.006%
38	10.512	1409	1412	1415	rBV3	386	599	0.05%	0.007%
39	10.579	1416	1423	1433	rVV	84038	146158	11.43%	1.673%
40	10.707	1437	1444	1454	rBV	75367	135449	10.59%	1.550%
41	10.780	1454	1456	1458	rBV3	467	529	0.04%	0.006%
42	10.926	1473	1480	1491	rBV	160790	287059	22.45%	3.286%
43	11.067	1498	1503	1511	rVB	13676	22829	1.79%	0.261%
44	11.176	1518	1521	1524	rVB5	957	1149	0.09%	0.013%
45	11.286	1531	1539	1545	rBV8	1979	6392	0.50%	0.073%
46	11.439	1559	1564	1570	rVB	26654	45859	3.59%	0.525%
47	11.634	1589	1596	1606	rBV	519130	863447	67.52%	9.883%
48	11.731	1608	1612	1619	rVB	8264	14979	1.17%	0.171%
49	11.841	1627	1630	1634	rBV4	1011	1605	0.13%	0.018%
50	11.896	1637	1639	1640	rBV	581	497	0.04%	0.006%
51	12.005	1655	1657	1659	rVB3	474	354	0.03%	0.004%
52	12.182	1680	1686	1693	rVB5	4832	8805	0.69%	0.101%
53	12.249	1693	1697	1698	rBV3	534	604	0.05%	0.007%
54	12.359	1698	1715	1716	rBV8	6347	19799	1.55%	0.227%
55	12.469	1728	1733	1741	rVB3	7104	11911	0.93%	0.136%
56	12.609	1748	1756	1763	rVB	48508	84537	6.61%	0.968%
57	12.694	1763	1770	1777	rBV	214623	354027	27.68%	4.052%
58	12.755	1777	1780	1784	rVV4	3033	4251	0.33%	0.049%
59	12.804	1784	1788	1792	rVB3	1202	2330	0.18%	0.027%
60	12.865	1794	1798	1803	rBV3	969	1545	0.12%	0.018%
61	12.932	1803	1809	1817	rBV4	6076	12069	0.94%	0.138%
62	13.036	1817	1826	1836	rVB4	4122	13188	1.03%	0.151%
63	13.109	1836	1838	1843	rVB4	824	1156	0.09%	0.013%
64	13.158	1845	1846	1849	rBV3	601	784	0.06%	0.009%
65	13.194	1849	1852	1860	rVB4	1979	3635	0.28%	0.042%
66	13.298	1860	1869	1875	rVB4	13805	29179	2.28%	0.334%
67	13.408	1878	1887	1892	rBV3	10725	19265	1.51%	0.221%
68	13.469	1892	1897	1903	rBV4	4474	7335	0.57%	0.084%
69	13.560	1905	1912	1925	rBV	337340	546746	42.75%	6.258%
70	13.767	1940	1946	1951	rVV5	2206	4444	0.35%	0.051%
71	13.853	1953	1960	1982	rVB	280748	471466	36.87%	5.396%

Data Path : Z:\VOASRV\HPCHEM1\MSVOA W\DATA\VW072220\
 Data File : VW015910.D
 Acq On : 22 Jul 2020 17:56
 Operator : SY/VA
 Sample : L3388-16
 Misc : 4.22G/10ML/MSVOA W/SOIL
 ALS Vial : 1 Sample Multiplier: 1

Instrument :
 MSVOA_W
 ClientSampleId :
 COAE3

Integration Parameters: LSCINT.P

Integrator: RTE
 Smoothing : OFF Filtering: 5
 Sampling : 1 Min Area: 0 % of largest Peak
 Start Thrs: 0.2 Max Peaks: 100
 Stop Thrs : 0 Peak Location: TOP

If leading or trailing edge < 100 prefer < Baseline drop else tangent >
 Peak separation: 5

Method : Z:\VOASRV\HPCHEM1\MSVOA_W\METHOD\SOM2WLM072020S.M
 Title : VOC Analysis

72	13.999	1982	1984	1987	rBV3	412	547	0.04%	0.006%
73	14.072	1990	1996	2005	rVB2	17971	29687	2.32%	0.340%
74	14.200	2012	2017	2022	rBV5	1659	3437	0.27%	0.039%
75	14.322	2030	2037	2042	rBV7	2019	5166	0.40%	0.059%
76	14.468	2059	2061	2062	rBV2	438	324	0.03%	0.004%
77	14.499	2062	2066	2069	rBV3	853	1225	0.10%	0.014%
78	14.566	2075	2077	2078	rBV	277	272	0.02%	0.003%
79	14.596	2080	2082	2085	rVV4	451	438	0.03%	0.005%
80	14.621	2085	2086	2091	rVB4	997	907	0.07%	0.010%
81	14.682	2095	2096	2097	rBV	439	303	0.02%	0.003%
82	14.731	2099	2104	2107	rBV2	5346	8315	0.65%	0.095%
83	15.096	2162	2164	2165	rBV	517	431	0.03%	0.005%
84	15.139	2169	2171	2175	rVB4	771	746	0.06%	0.009%
85	15.267	2190	2192	2195	rVV4	359	327	0.03%	0.004%
86	15.322	2198	2201	2204	rVB3	368	539	0.04%	0.006%
87	15.438	2215	2220	2225	rVB2	7415	11626	0.91%	0.133%
88	15.499	2225	2230	2234	rBV3	2506	4105	0.32%	0.047%
89	15.645	2252	2254	2256	rBV2	424	354	0.03%	0.004%
90	15.682	2257	2260	2261	rBV	483	565	0.04%	0.006%
91	15.700	2261	2263	2265	rVB3	906	760	0.06%	0.009%
92	15.767	2271	2274	2276	rBV3	910	999	0.08%	0.011%
93	15.846	2284	2287	2291	rBV4	874	1263	0.10%	0.014%
94	15.956	2303	2305	2308	rBV3	384	442	0.03%	0.005%
95	16.017	2313	2315	2318	rBV2	467	727	0.06%	0.008%
96	16.078	2323	2325	2328	rVB3	411	360	0.03%	0.004%
97	16.334	2365	2367	2369	rBV3	434	362	0.03%	0.004%
98	16.358	2369	2371	2376	rVB3	451	477	0.04%	0.005%
99	16.688	2419	2425	2434	rVB5	8044	17595	1.38%	0.201%
100	16.779	2436	2440	2441	rBV3	1769	1960	0.15%	0.022%

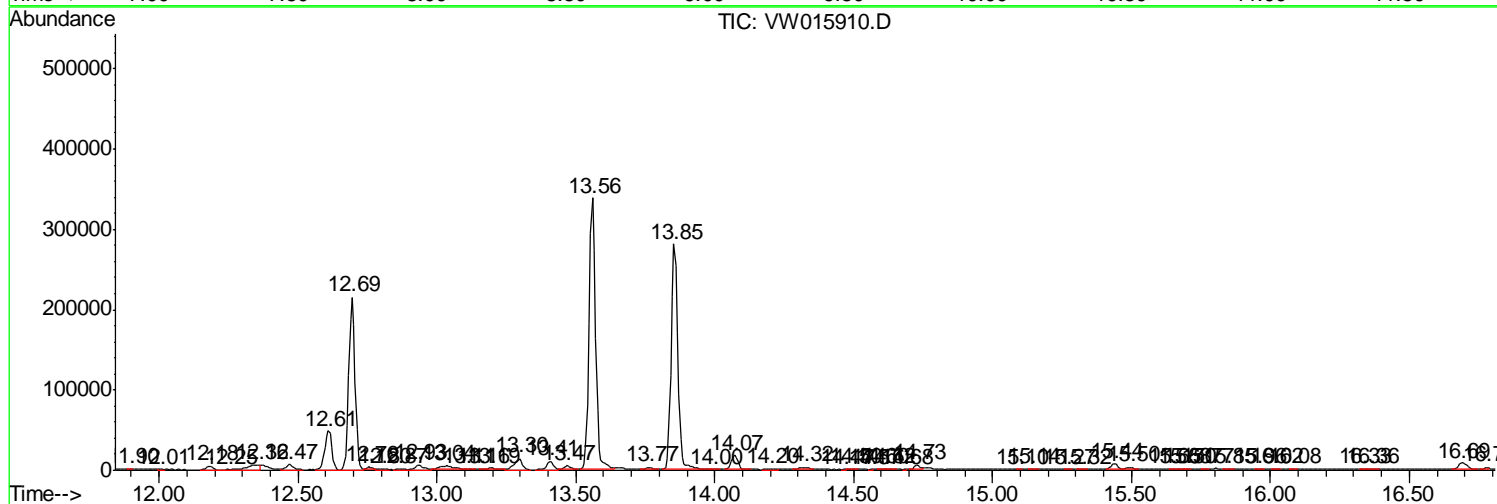
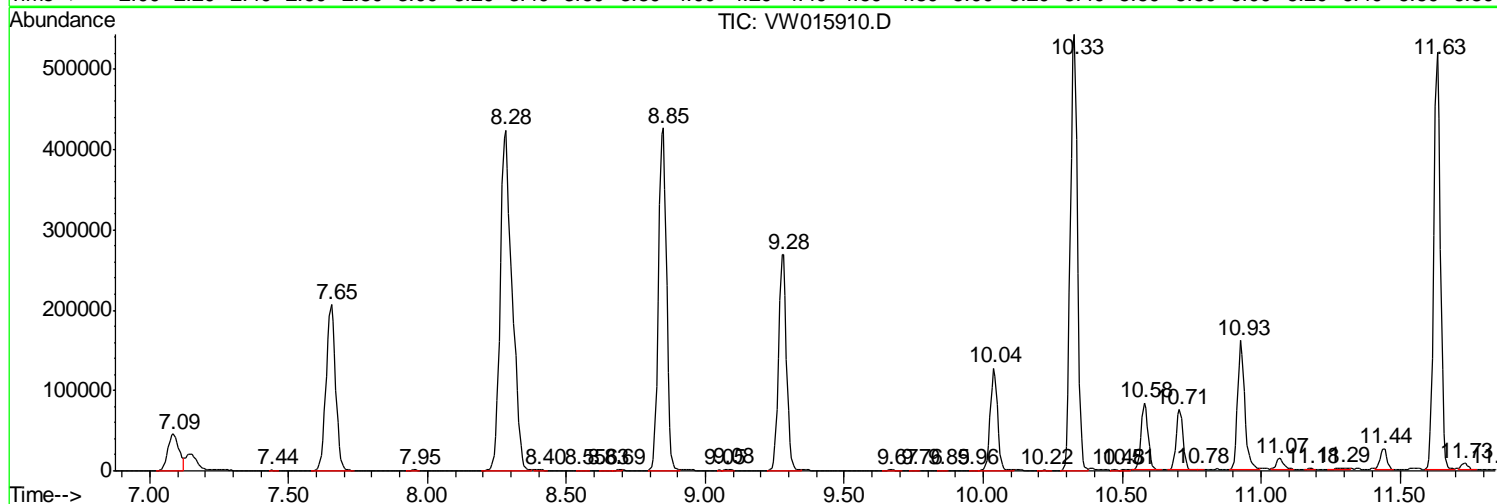
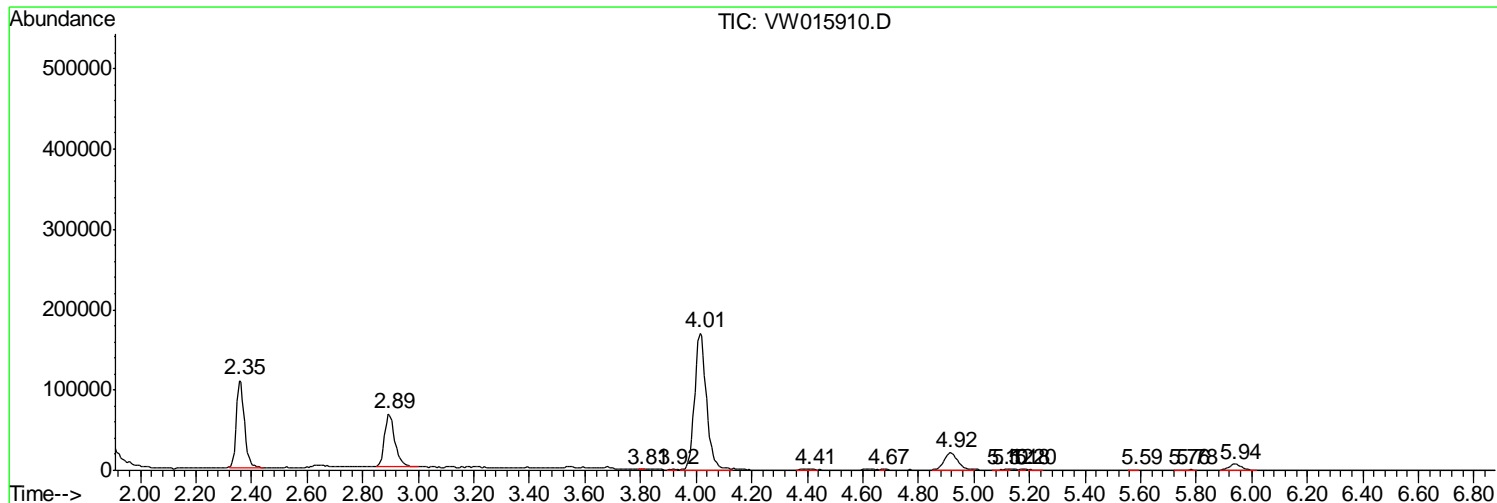
Sum of corrected areas: 8736553

Data Path : Z:\VOASRV\HPCHEM1\MSVOA W\DATA\VW072220\
 Data File : VW015910.D
 Acq On : 22 Jul 2020 17:56
 Operator : SY/VA
 Sample : L3388-16
 Misc : 4.22G/10ML/MSVOA W/SOIL
 ALS Vial : 1 Sample Multiplier: 1

Instrument :
 MSVOA_W
 ClientSampleId :
 COAE3

Quant Method : Z:\VOASRV\HPCHEM1\MSVOA_W\METHOD\SOM2WLM072020S.M
 Quant Title : VOC Analysis

TIC Library : C:\DATABASE\NIST11.L
 TIC Integration Parameters: LSCINT.P



Data Path : Z:\VOASRV\HPCHEM1\MSVOA_W\DATA\VW072220\
Data File : VW015910.D
Acq On : 22 Jul 2020 17:56
Operator : SY/VA
Sample : L3388-16
Misc : 4.22G/10ML/MSVOA_W/SOIL
ALS Vial : 1 Sample Multiplier: 1

Instrument :
MSVOA_W
ClientSampleId :
C0AE3

Quant Method : Z:\VOASRV\HPCHEM1\MSVOA_W\METHOD\SOM2WLM072020S.M
Quant Title : VOC Analysis

TIC Library : C:\DATABASE\NIST11.L
TIC Integration Parameters: LSCINT.P

No Library Search Compounds Detected

Data Path : Z:\VOASRV\HPCHEM1\MSVOA_W\DATA\VW072220\
Data File : VW015910.D
Acq On : 22 Jul 2020 17:56
Operator : SY/VA
Sample : L3388-16
Misc : 4.22G/10ML/MSVOA_W/SOIL
ALS Vial : 1 Sample Multiplier: 1

Instrument :
MSVOA_W
ClientSampleId :
C0AE3

Quant Method : Z:\VOASRV\HPCHEM1\MSVOA_W\METHOD\SOM2WLM072020S.M
Quant Title : VOC Analysis

TIC Library : C:\DATABASE\NIST11.L
TIC Integration Parameters: LSCINT.P

TIC Top Hit name	RT	EstConc	Units	Response	--Internal Standard--			
					#	RT	Resp	Conc
