

Data Path : Z:\voasrv\HPCHEM1\MSVOA\_W\Data\VW072522\  
 Data File : VW024083.D  
 Acq On : 25 Jul 2022 21:27  
 Operator : SY/VA  
 Sample : N3743-22  
 Misc : 5.06g/10mL/MSVOA\_W/SOIL  
 ALS Vial : 1 Sample Multiplier: 1

**Instrument :**  
 MSVOA\_W  
**ClientSampleId :**  
 VHBLK002

Quant Time: Jul 26 01:35:34 2022  
 Quant Method : Z:\voasrv\HPCHEM1\MSVOA\_W\Method\SFAMWLM072522SMA.M  
 Quant Title : SFAM01.0  
 QLast Update : Tue Jul 26 01:30:33 2022  
 Response via : Initial Calibration

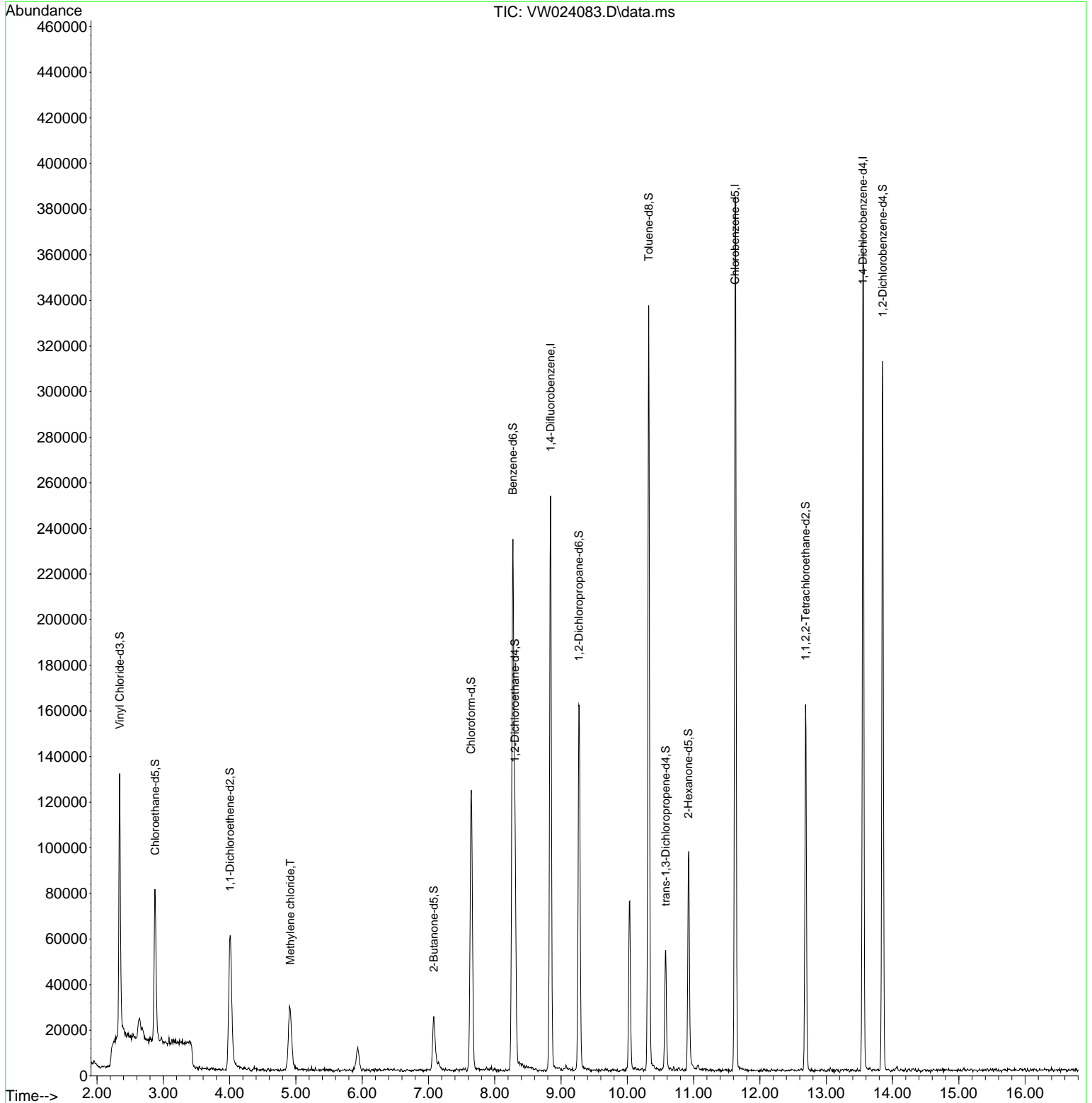
Compound	R.T.	QIon	Response	Conc	Units	Dev(Min)
-----						
Internal Standards						
1) 1,4-Difluorobenzene	8.841	114	187820	25.000	ug/L	0.00
28) Chlorobenzene-d5	11.628	117	198815	25.000	ug/L	0.00
58) 1,4-Dichlorobenzene-d4	13.554	152	88695	25.000	ug/L	0.00
System Monitoring Compounds						
4) Vinyl Chloride-d3	2.343	65	123575	30.695	ug/L	0.00
Spiked Amount	25.000	Range 30 - 150	Recovery =	122.760%		
7) Chloroethane-d5	2.879	69	75490	27.752	ug/L	0.00
Spiked Amount	25.000	Range 30 - 150	Recovery =	111.000%		
11) 1,1-Dichloroethene-d2	4.007	63	62271	17.566	ug/L	0.00
Spiked Amount	25.000	Range 45 - 110	Recovery =	70.280%		
21) 2-Butanone-d5	7.080	46	37416	52.293	ug/L	0.00
Spiked Amount	50.000	Range 20 - 135	Recovery =	104.580%		
24) Chloroform-d	7.640	84	121538	23.538	ug/L	0.00
Spiked Amount	25.000	Range 40 - 150	Recovery =	94.160%		
26) 1,2-Dichloroethane-d4	8.305	65	73969	24.934	ug/L	0.00
Spiked Amount	25.000	Range 70 - 130	Recovery =	99.720%		
32) Benzene-d6	8.275	84	220852	23.913	ug/L	0.00
Spiked Amount	25.000	Range 20 - 135	Recovery =	95.640%		
36) 1,2-Dichloropropane-d6	9.268	67	68805	23.620	ug/L	0.00
Spiked Amount	25.000	Range 70 - 120	Recovery =	94.480%		
41) Toluene-d8	10.323	98	209636	22.697	ug/L	0.00
Spiked Amount	25.000	Range 30 - 130	Recovery =	90.800%		
43) trans-1,3-Dichloroprop...	10.579	79	26606	20.599	ug/L	0.00
Spiked Amount	25.000	Range 30 - 135	Recovery =	82.400%		
47) 2-Hexanone-d5	10.920	63	28550	46.880	ug/L	0.00
Spiked Amount	50.000	Range 20 - 135	Recovery =	93.760%		
56) 1,1,2,2-Tetrachloroeth...	12.688	84	72981	21.713	ug/L	0.00
Spiked Amount	25.000	Range 45 - 120	Recovery =	86.840%		
66) 1,2-Dichlorobenzene-d4	13.853	152	71841	25.010	ug/L	0.00
Spiked Amount	25.000	Range 75 - 120	Recovery =	100.040%		
-----						
Target Compounds						Qvalue
16) Methylene chloride	4.915	84	21674	7.582	ug/L	90
-----						

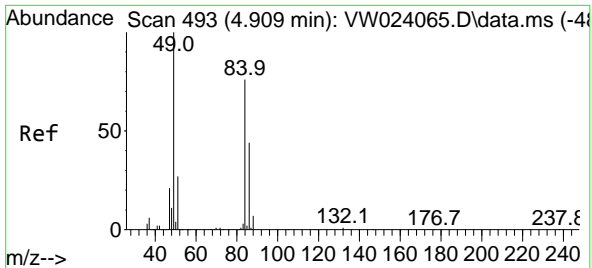
(#) = qualifier out of range (m) = manual integration (+) = signals summed

Data Path : Z:\voasrv\HPCHEM1\MSVOA\_W\Data\VW072522\  
 Data File : VW024083.D  
 Acq On : 25 Jul 2022 21:27  
 Operator : SY/VA  
 Sample : N3743-22  
 Misc : 5.06g/10mL/MSVOA\_W/SOIL  
 ALS Vial : 1 Sample Multiplier: 1

Instrument :  
 MSVOA\_W  
 ClientSampleId :  
 VHBLK002

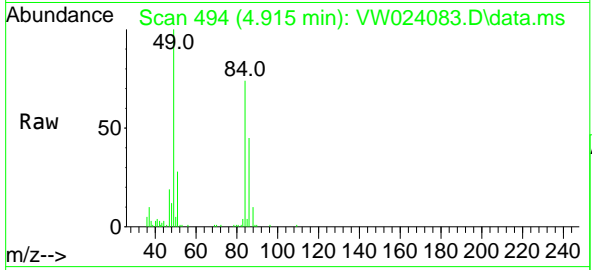
Quant Time: Jul 26 01:35:34 2022  
 Quant Method : Z:\voasrv\HPCHEM1\MSVOA\_W\Method\SFAMWLM072522SMA.M  
 Quant Title : SFAM01.0  
 QLast Update : Tue Jul 26 01:30:33 2022  
 Response via : Initial Calibration





#16  
 Methylene chloride  
 Concen: 7.582 ug/L  
 RT: 4.915 min Scan# 49  
 Delta R.T. 0.006 min  
 Lab File: VW024083.D  
 Acq: 25 Jul 2022 21:27

Instrument :  
 MSVOA\_W  
 ClientSampleId :  
 VHBLK002



Tgt Ion: 84 Resp: 21674

Ion	Ratio	Lower	Upper
84	100		
86	60.2	44.7	83.1
49	134.5	83.7	155.4

