

Data File : VW011503.D
 Acq On : 25 Jul 2019 17:05
 Operator : SY/VA
 Sample : K3979-13
 Misc : 5.34G/10ML/MSVOA_W/SOIL
 ALS Vial : 1 Sample Multiplier: 1

Instrument :
 MSVOA_W
 ClientSampleId :
 DB933

Quant Time: Jul 26 01:10:14 2019
 Quant Method : Z:\VOASRV\HPCHEM1\MSVOA_W\METHOD\SOM2WLM072219S.M
 Quant Title : VOC Analysis
 QLast Update : Fri Jul 26 01:06:02 2019
 Response via : Initial Calibration

Internal Standards	R.T.	QIon	Response	Conc	Units	Dev(Min)
1) 1,4-Difluorobenzene	8.84	114	337134	25.00	ug/L	0.00
28) Chlorobenzene-d5	11.63	117	310039	25.00	ug/L	0.00
60) 1,4-Dichlorobenzene-d4	13.56	152	140706	25.00	ug/L	0.00

System Monitoring Compounds

4) Vinyl Chloride-d3	2.35	65	118227	26.27	ug/L	0.00
Spiked Amount	25.000	Range	30 - 150	Recovery	=	105.08%
7) Chloroethane-d5	2.89	69	83879	25.58	ug/L	0.00
Spiked Amount	25.000	Range	30 - 150	Recovery	=	102.32%
10) 1,1-Dichloroethene-d2	4.02	63	200559	19.67	ug/L	0.00
Spiked Amount	25.000	Range	45 - 110	Recovery	=	78.68%
20) 2-Butanone-d5	7.07	46	112200	58.54	ug/L	0.00
Spiked Amount	50.000	Range	20 - 135	Recovery	=	117.08%
24) Chloroform-d	7.65	84	223697	25.91	ug/L	0.00
Spiked Amount	25.000	Range	40 - 150	Recovery	=	103.64%
26) 1,2-Dichloroethane-d4	8.31	65	143959	28.04	ug/L	0.00
Spiked Amount	25.000	Range	70 - 130	Recovery	=	112.16%
29) Benzene-d6	8.27	84	471438	25.43	ug/L	0.00
Spiked Amount	25.000	Range	20 - 135	Recovery	=	101.72%
33) 1,2-Dichloropropane-d6	9.27	67	155629	25.90	ug/L	0.00
Spiked Amount	25.000	Range	70 - 120	Recovery	=	103.60%
37) Toluene-d8	10.32	98	417529	25.12	ug/L	0.00
Spiked Amount	25.000	Range	30 - 130	Recovery	=	100.48%
38) trans-1,3-Dichloropropene-	10.58	79	62689	24.15	ug/L	0.00
Spiked Amount	25.000	Range	30 - 135	Recovery	=	96.60%
39) 2-Hexanone-d5	10.93	63	75825	58.21	ug/L	0.00
Spiked Amount	50.000	Range	20 - 135	Recovery	=	116.42%
48) 1,1,2,2-Tetrachloroethane-	12.69	84	134686	28.06	ug/L	0.00
Spiked Amount	25.000	Range	45 - 120	Recovery	=	112.24%
61) 1,2-Dichlorobenzene-d4	13.85	152	140036	26.51	ug/L	0.00
Spiked Amount	25.000	Range	75 - 120	Recovery	=	106.04%

Target Compounds

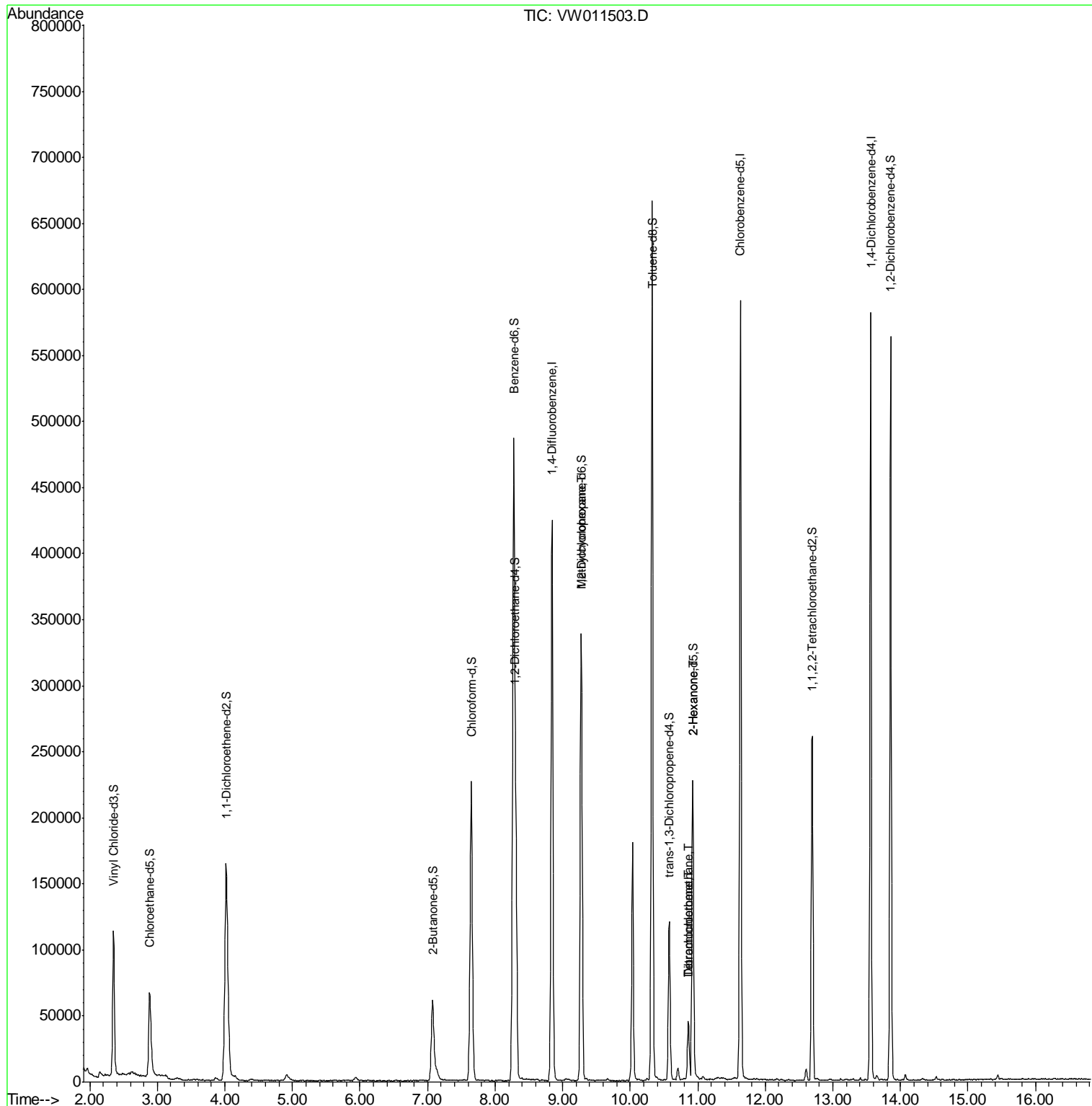
					Qvalue
36) Methylcyclohexane	9.27	83	35385	3.804 ug/L #	15
47) Tetrachloroethene	10.86	164	9522	2.426 ug/L	96
49) 2-Hexanone	10.93	43	10536	3.015 ug/L #	71
50) Dibromochloromethane	10.86	129	8883	2.217 ug/L #	11

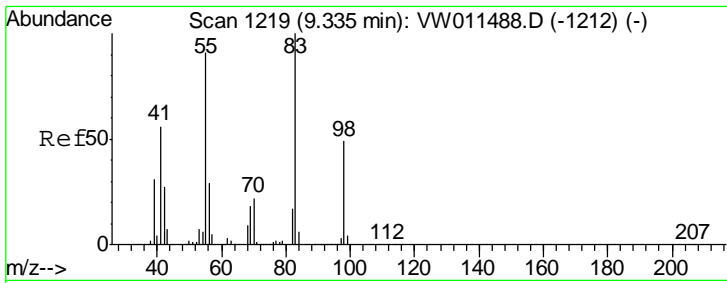
(#) = qualifier out of range (m) = manual integration (+) = signals summed

Data File : VW011503.D
Acq On : 25 Jul 2019 17:05
Operator : SY/VA
Sample : K3979-13
Misc : 5.34G/10ML/MSVOA_W/SOIL
ALS Vial : 1 Sample Multiplier: 1

Instrument :
MSVOA_W
Client Sampled :
DB933

Quant Time: Jul 26 01:10:14 2019
Quant Method : Z:\VOASRV\HPCHEM1\MSVOA_W\METHOD\SOM2WLM072219S.M
Quant Title : VOC Analysis
QLast Update : Fri Jul 26 01:06:02 2019
Response via : Initial Calibration

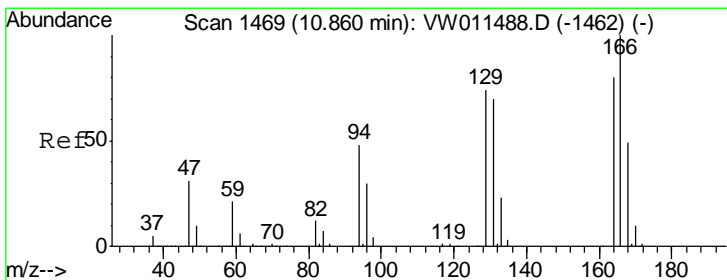
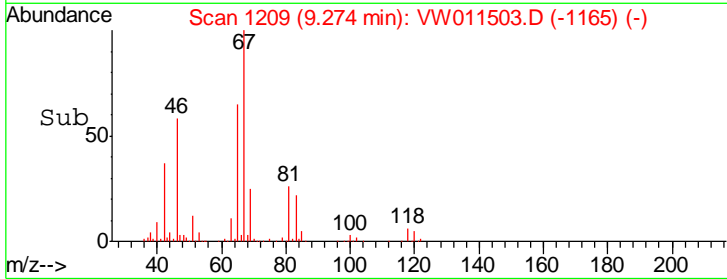
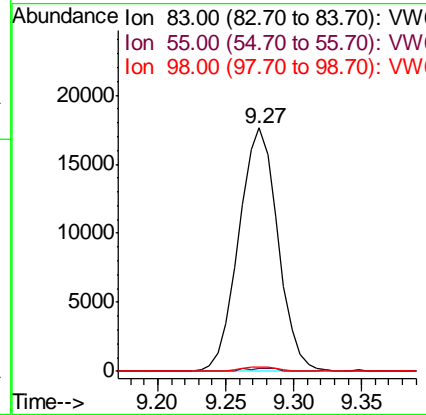
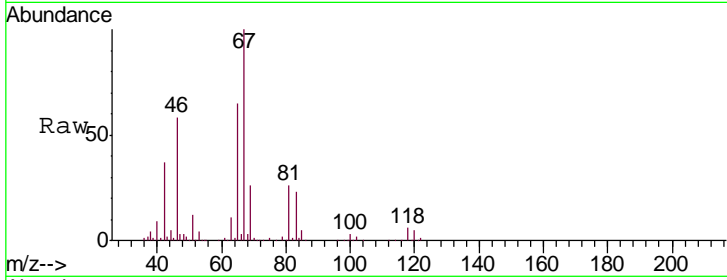




#36
 Methylcyclohexane
 Concen: 3.804 ug/L
 RT: 9.27 min Scan# 1209
 Delta R.T. -0.06 min
 Lab File: VW011503.D
 Acq: 25 Jul 2019 17:05

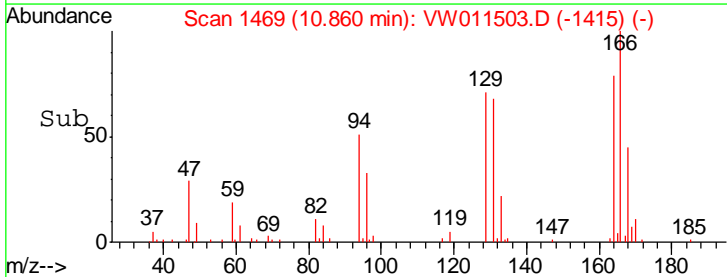
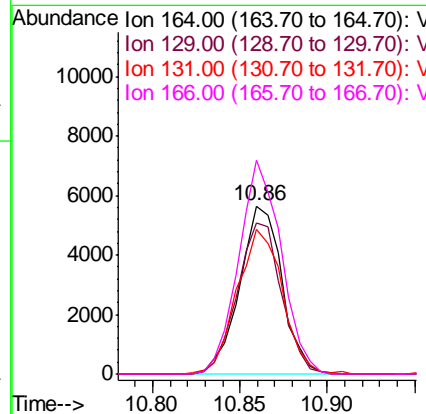
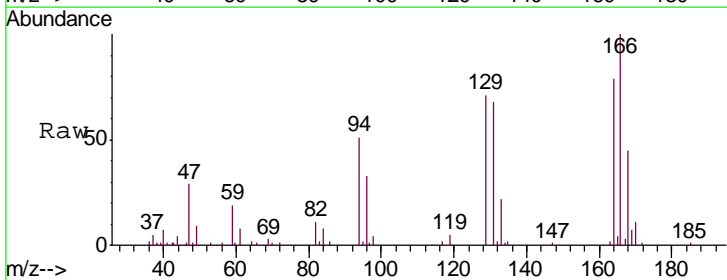
Instrument :
 MSVOA_W
 ClientSampled :
 DB933

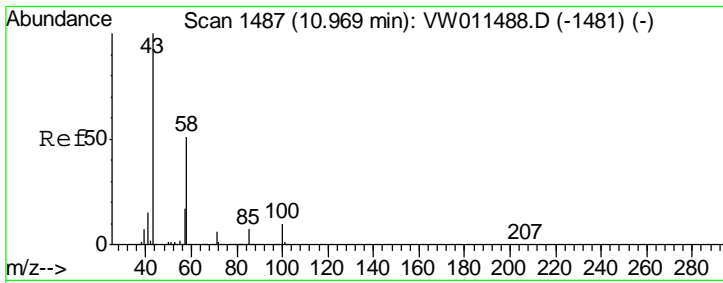
Tgt Ion	Resp	Lower	Upper
83	35385		
55	1.2	71.5	107.3#
98	1.7	37.4	56.2#



#47
 Tetrachloroethene
 Concen: 2.426 ug/L
 RT: 10.86 min Scan# 1469
 Delta R.T. 0.00 min
 Lab File: VW011503.D
 Acq: 25 Jul 2019 17:05

Tgt Ion	Resp	Lower	Upper
164	9522		
164	100		
129	90.2	69.0	128.1
131	86.3	64.5	119.7
166	127.0	89.2	165.6

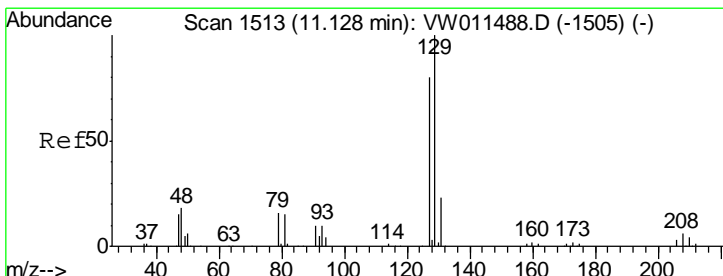
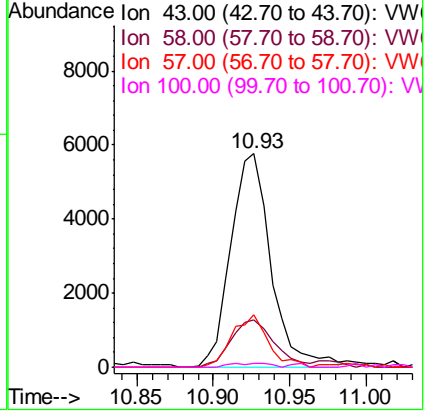
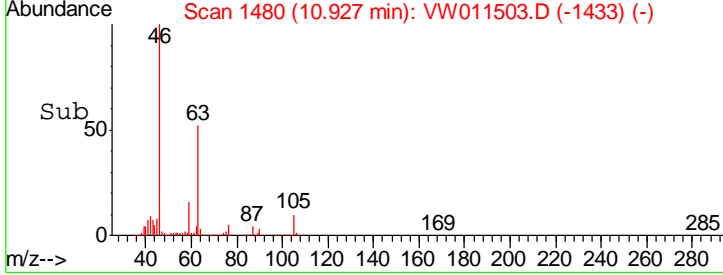
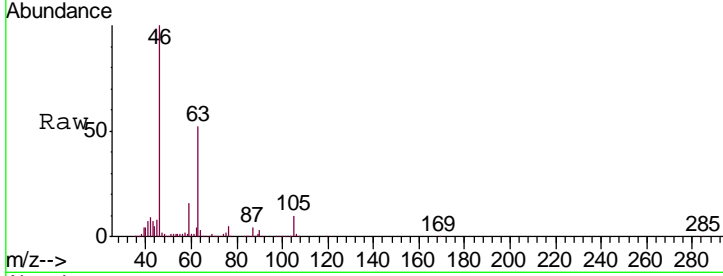




#49
 2-Hexanone
 Concen: 3.015 ug/L
 RT: 10.93 min Scan# 1480
 Delta R.T. -0.04 min
 Lab File: VW011503.D
 Acq: 25 Jul 2019 17:05

Instrument : MSVOA_W
 ClientSampled : DB933

Tgt Ion	Resp	Lower	Upper
43	10536		
58	24.0	40.1	60.1#
57	20.7	13.8	20.6#
100	0.9	7.8	11.6#



#50
 Dibromochloromethane
 Concen: 2.217 ug/L
 RT: 10.86 min Scan# 1469
 Delta R.T. -0.27 min
 Lab File: VW011503.D
 Acq: 25 Jul 2019 17:05

Tgt Ion	Resp	Lower	Upper
129	8883		
127	0.0	53.9	100.1#

