

Data Path : Z:\VOASRV\HPCHEM1\MSVOA W\DATA\VW072619\  
 Data File : VW011490.D  
 Acq On : 25 Jul 2019 10:42  
 Operator : SY/VA  
 Sample : K3979-01  
 Misc : 5.00G/10ML/MSVOA W/SOIL  
 ALS Vial : 1 Sample Multiplier: 1

Instrument :  
 MSVOA\_W  
 ClientSampleId :  
 DB908

Integration Parameters: LSCINT.P

Integrator: RTE  
 Smoothing : OFF  
 Sampling : 1  
 Start Thrs: 0.2  
 Stop Thrs : 0

Filtering: 5  
 Min Area: 0 % of largest Peak  
 Max Peaks: 100  
 Peak Location: TOP

If leading or trailing edge < 100 prefer < Baseline drop else tangent >  
 Peak separation: 5

Method : Z:\VOASRV\HPCHEM1\MSVOA\_W\METHOD\SOM2WLM072219S.M  
 Title : VOC Analysis

Signal : TIC

peak #	R.T. min	first scan	max scan	last scan	PK TY	peak height	corr. area	corr. % max.	% of total
1	1.965	6	10	19	rVB2	6977	13763	0.67%	0.040%
2	2.148	35	40	45	rBV	26644	42631	2.08%	0.123%
3	2.209	45	50	60	rVV	119410	203126	9.93%	0.588%
4	2.319	62	68	70	rVV	109852	170408	8.33%	0.493%
5	2.349	70	73	90	rVB	136489	280136	13.70%	0.810%
6	2.770	137	142	151	rVB	41350	88560	4.33%	0.256%
7	2.879	153	160	173	rVB	78278	186402	9.12%	0.539%
8	3.251	212	221	236	rBV2	52024	130234	6.37%	0.377%
9	3.379	236	242	253	rVB4	7377	19593	0.96%	0.057%
10	3.574	269	274	275	rBV4	732	1278	0.06%	0.004%
11	3.818	307	314	329	rVB7	6375	22080	1.08%	0.064%
12	4.026	334	348	358	rBV3	341525	1240690	60.68%	3.589%
13	4.123	359	364	381	rVB	110595	306781	15.00%	0.888%
14	4.306	392	394	399	rVB4	1253	1506	0.07%	0.004%
15	4.397	404	409	410	rBV4	1100	1370	0.07%	0.004%
16	4.666	442	453	473	rBV	79636	235795	11.53%	0.682%
17	4.910	481	493	518	rVB	95184	345117	16.88%	0.998%
18	5.117	520	527	528	rBV6	1867	3438	0.17%	0.010%
19	5.422	562	577	595	rVV2	302651	1009232	49.36%	2.920%
20	5.751	623	631	641	rVV4	4660	14661	0.72%	0.042%
21	5.928	653	660	672	rVB6	3349	10647	0.52%	0.031%
22	6.129	688	693	695	rVB4	773	1065	0.05%	0.003%
23	6.434	738	743	745	rBV4	697	1145	0.06%	0.003%
24	7.074	839	848	853	rBV	70577	185648	9.08%	0.537%
25	7.165	854	863	878	rVB2	307488	915385	44.77%	2.648%
26	7.513	907	920	931	rBV2	125816	325218	15.91%	0.941%
27	7.647	931	942	956	rVV	269886	670605	32.80%	1.940%
28	7.866	966	978	985	rVV	118828	298031	14.58%	0.862%
29	7.952	985	992	1002	rVV	220858	579465	28.34%	1.676%
30	8.067	1002	1011	1022	rVB	136673	338445	16.55%	0.979%
31	8.275	1032	1045	1058	rBV2	600767	1792110	87.65%	5.185%
32	8.397	1058	1065	1075	rVB	94794	199540	9.76%	0.577%
33	8.671	1105	1110	1111	rBV4	1766	2355	0.12%	0.007%
34	8.842	1128	1138	1153	rVV	577234	1140103	55.76%	3.298%

Data Path : Z:\VOASRV\HPCHEM1\MSVOA W\DATA\VW072619\  
 Data File : VW011490.D  
 Acq On : 25 Jul 2019 10:42  
 Operator : SY/VA  
 Sample : K3979-01  
 Misc : 5.00G/10ML/MSVOA W/SOIL  
 ALS Vial : 1 Sample Multiplier: 1

Instrument :  
 MSVOA\_W  
 ClientSampleId :  
 DB908

## Integration Parameters: LSCINT.P

Integrator: RTE  
 Smoothing : OFF  
 Sampling : 1  
 Start Thrs: 0.2  
 Stop Thrs : 0

Filtering: 5  
 Min Area: 0 % of largest Peak  
 Max Peaks: 100  
 Peak Location: TOP

If leading or trailing edge < 100 prefer < Baseline drop else tangent >  
 Peak separation: 5

Method : Z:\VOASRV\HPCHEM1\MSVOA\_W\METHOD\SOM2WLM072219S.M  
 Title : VOC Analysis

35	9.092	1164	1179	1188	rBV	748175	1481727	72.47%	4.287%
36	9.275	1200	1209	1213	rBV	397627	808537	39.54%	2.339%
37	9.336	1213	1219	1232	rVB2	789291	2044714	100.00%	5.915%
38	9.457	1233	1239	1255	rVB	28737	65652	3.21%	0.190%
39	9.640	1262	1269	1276	rBV	235968	467522	22.86%	1.353%
40	9.762	1283	1289	1299	rVB2	7541	17578	0.86%	0.051%
41	9.890	1303	1310	1319	rBV2	20090	44189	2.16%	0.128%
42	10.037	1321	1334	1336	rBV	231497	425526	20.81%	1.231%
43	10.073	1336	1340	1348	rVV	308588	556996	27.24%	1.611%
44	10.146	1348	1352	1359	rVV3	7804	15855	0.78%	0.046%
45	10.213	1359	1363	1364	rVV2	1692	2186	0.11%	0.006%
46	10.250	1364	1369	1373	rVV	10620	17933	0.88%	0.052%
47	10.323	1373	1381	1386	rVV	807365	1410035	68.96%	4.079%
48	10.384	1386	1391	1402	rVB	762355	1359701	66.50%	3.934%
49	10.506	1407	1411	1415	rBV5	2137	3264	0.16%	0.009%
50	10.579	1415	1423	1426	rBV	163196	340541	16.65%	0.985%
51	10.707	1437	1444	1450	rBV	46343	85336	4.17%	0.247%
52	10.768	1450	1454	1461	rVB6	3324	7183	0.35%	0.021%
53	10.860	1461	1469	1475	rBV	904184	1550745	75.84%	4.486%
54	10.927	1475	1480	1483	rVV	241312	401516	19.64%	1.162%
55	10.969	1483	1487	1493	rVB	283058	444770	21.75%	1.287%
56	11.067	1498	1503	1507	rBV3	22808	37761	1.85%	0.109%
57	11.128	1507	1513	1519	rVV	195439	328629	16.07%	0.951%
58	11.335	1544	1547	1551	rBV4	1427	2152	0.11%	0.006%
59	11.402	1554	1558	1560	rVV3	3508	5291	0.26%	0.015%
60	11.439	1560	1564	1570	rVB4	6237	11568	0.57%	0.033%
61	11.628	1587	1595	1604	rVV	754267	1307801	63.96%	3.784%
62	11.731	1604	1612	1623	rVV	674258	1068679	52.27%	3.092%
63	11.847	1623	1631	1640	rVV	421155	682624	33.38%	1.975%
64	12.024	1657	1660	1671	rBV7	1470	4451	0.22%	0.013%
65	12.164	1675	1683	1693	rVB	503485	813448	39.78%	2.353%
66	12.347	1709	1713	1715	rBV4	1054	1488	0.07%	0.004%
67	12.463	1724	1732	1744	rBV	633882	1024510	50.11%	2.964%
68	12.561	1744	1748	1749	rVV3	847	1193	0.06%	0.003%
69	12.609	1749	1756	1762	rVV	31814	54679	2.67%	0.158%
70	12.695	1762	1770	1774	rVV	294655	508379	24.86%	1.471%
71	12.743	1774	1778	1791	rVV	616917	1023395	50.05%	2.961%

Data Path : Z:\VOASRV\HPCHEM1\MSVOA W\DATA\VW072619\  
 Data File : VW011490.D  
 Acq On : 25 Jul 2019 10:42  
 Operator : SY/VA  
 Sample : K3979-01  
 Misc : 5.00G/10ML/MSVOA W/SOIL  
 ALS Vial : 1 Sample Multiplier: 1

Instrument :  
 MSVOA\_W  
 ClientSampleId :  
 DB908

## Integration Parameters: LSCINT.P

Integrator: RTE  
 Smoothing : OFF Filtering: 5  
 Sampling : 1 Min Area: 0 % of largest Peak  
 Start Thrs: 0.2 Max Peaks: 100  
 Stop Thrs : 0 Peak Location: TOP

If leading or trailing edge < 100 prefer < Baseline drop else tangent >  
 Peak separation: 5

Method : Z:\VOASRV\HPCHEM1\MSVOA\_W\METHOD\SOM2WLM072219S.M  
 Title : VOC Analysis

72	12.853	1794	1796	1799	rBV3	769	933	0.05%	0.003%
73	12.932	1805	1809	1817	rVV4	5066	9545	0.47%	0.028%
74	13.030	1817	1825	1830	rVV5	7481	16475	0.81%	0.048%
75	13.079	1830	1833	1837	rVB4	1350	1790	0.09%	0.005%
76	13.164	1843	1847	1849	rBV4	979	1429	0.07%	0.004%
77	13.195	1849	1852	1856	rVB2	3122	3905	0.19%	0.011%
78	13.298	1861	1869	1877	rVB8	4510	11511	0.56%	0.033%
79	13.408	1879	1887	1893	rBV4	6613	12571	0.61%	0.036%
80	13.499	1893	1902	1907	rBV	625642	1029538	50.35%	2.978%
81	13.560	1907	1912	1925	rVB	776800	1259936	61.62%	3.645%
82	13.762	1940	1945	1949	rBV6	4069	7355	0.36%	0.021%
83	13.859	1953	1961	1974	rVV3	790043	1580299	77.29%	4.572%
84	13.951	1974	1976	1981	rVB3	2290	2778	0.14%	0.008%
85	14.073	1990	1996	2003	rVV2	17075	28535	1.40%	0.083%
86	14.201	2014	2017	2023	rVB5	2033	3272	0.16%	0.009%
87	14.268	2023	2028	2029	rBV3	647	1051	0.05%	0.003%
88	14.329	2029	2038	2042	rBV8	2924	5687	0.28%	0.016%
89	14.420	2048	2053	2055	rBV3	552	1032	0.05%	0.003%
90	14.487	2057	2064	2073	rVV	80037	132512	6.48%	0.383%
91	14.627	2080	2087	2096	rBV	737575	1205402	58.95%	3.487%
92	14.688	2096	2097	2099	rVV2	1238	1112	0.05%	0.003%
93	14.725	2100	2103	2108	rVB4	2104	3329	0.16%	0.010%
94	15.091	2159	2163	2166	rBV6	1260	2127	0.10%	0.006%
95	15.133	2166	2170	2174	rVB5	1761	2944	0.14%	0.009%
96	15.347	2199	2205	2206	rBV4	1198	2185	0.11%	0.006%
97	15.444	2214	2221	2226	rBV	17142	29590	1.45%	0.086%
98	15.554	2237	2239	2245	rVB5	1625	2319	0.11%	0.007%
99	15.700	2259	2263	2265	rVB4	972	1209	0.06%	0.003%
100	15.847	2284	2287	2291	rBV4	885	1205	0.06%	0.003%

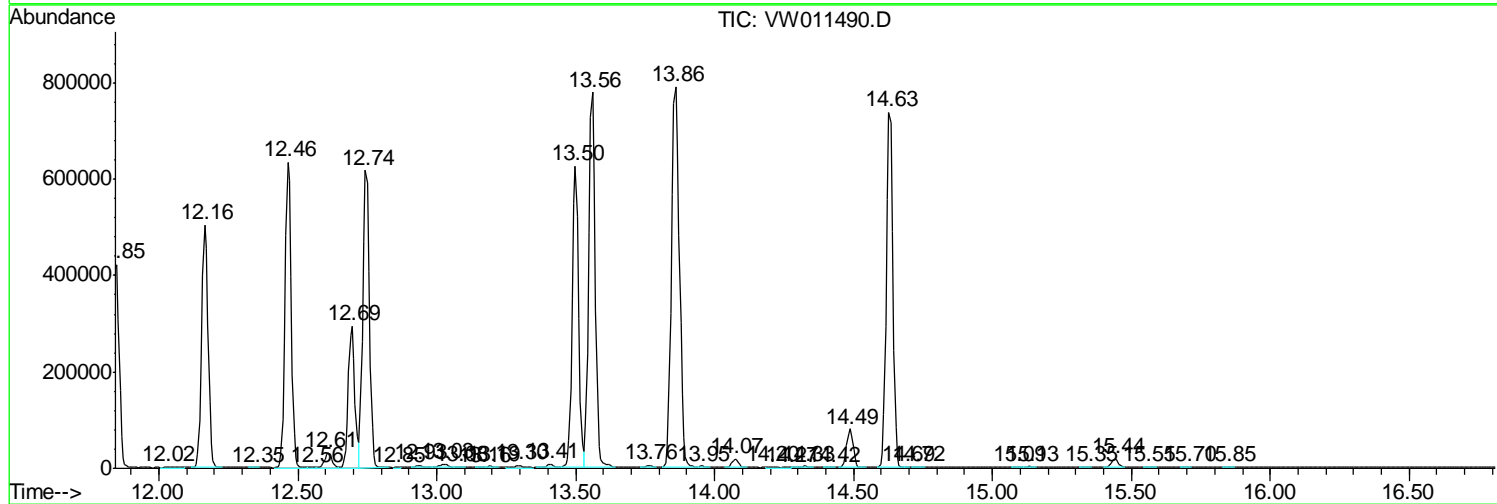
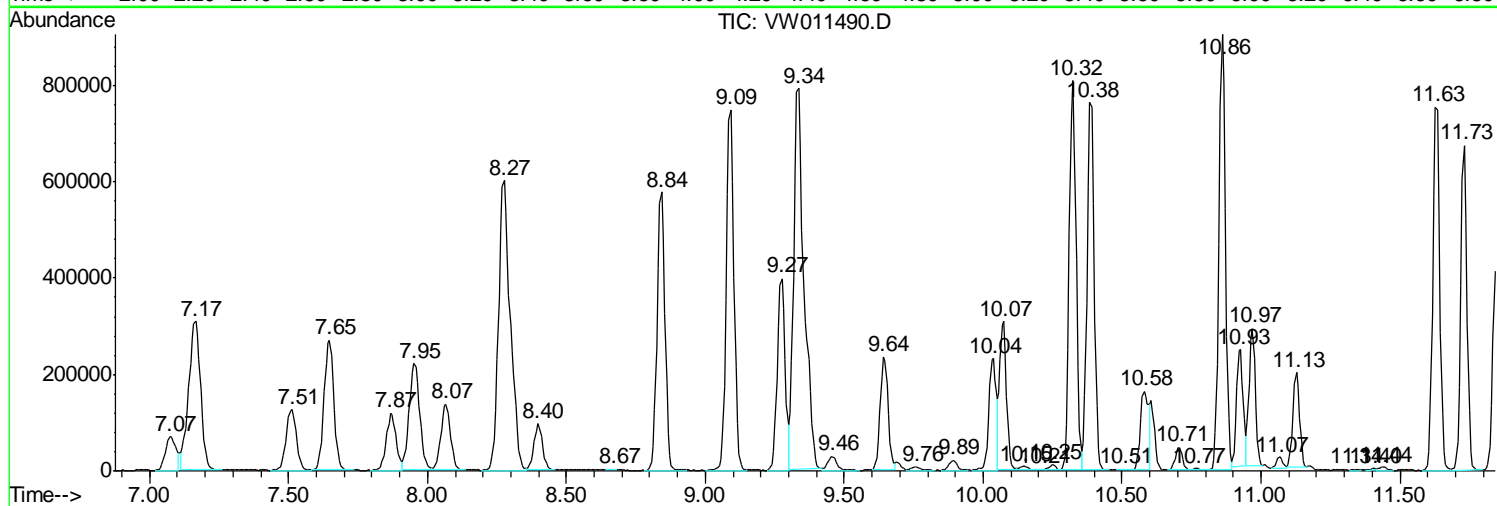
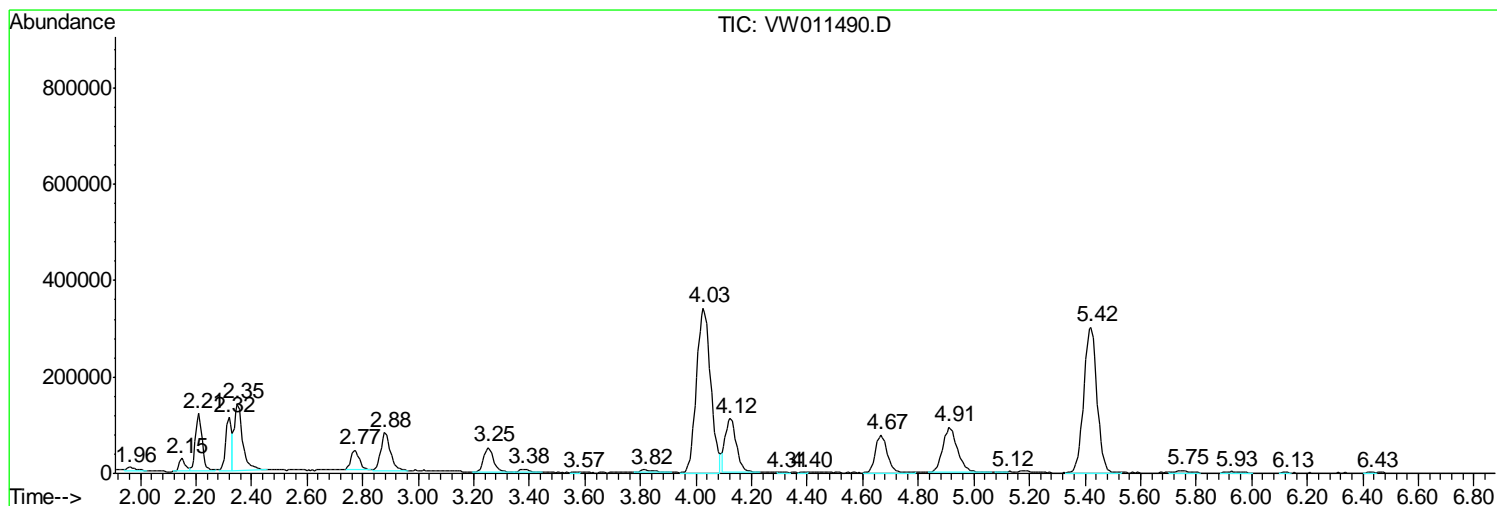
Sum of corrected areas: 34565693

Data Path : Z:\VOASRV\HPCHEM1\MSVOA W\DATA\VW072619\  
 Data File : VW011490.D  
 Acq On : 25 Jul 2019 10:42  
 Operator : SY/VA  
 Sample : K3979-01  
 Misc : 5.00G/10ML/MSVOA W/SOIL  
 ALS Vial : 1 Sample Multiplier: 1

Instrument :  
 MSVOA\_W  
 ClientSampleId :  
 DB908

Quant Method : Z:\VOASRV\HPCHEM1\MSVOA\_W\METHOD\SOM2WLM072219S.M  
 Quant Title : VOC Analysis

TIC Library : C:\DATABASE\NIST11.L  
 TIC Integration Parameters: LSCINT.P



Data Path : Z:\VOASRV\HPCHEM1\MSVOA W\DATA\VW072619\  
 Data File : VW011490.D  
 Acq On : 25 Jul 2019 10:42  
 Operator : SY/VA  
 Sample : K3979-01  
 Misc : 5.00G/10ML/MSVOA W/SOIL  
 ALS Vial : 1 Sample Multiplier: 1

Instrument :  
 MSVOA\_W  
 ClientSampleID :  
 DB908

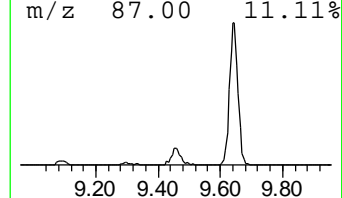
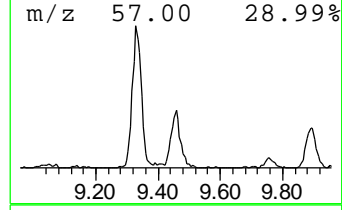
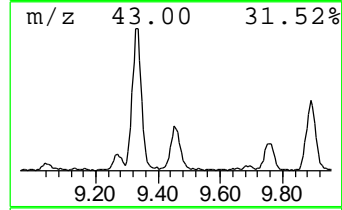
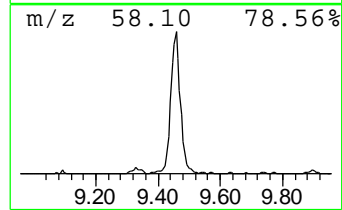
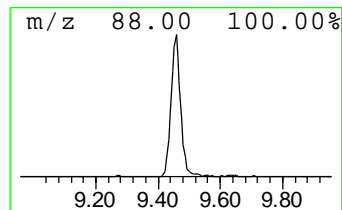
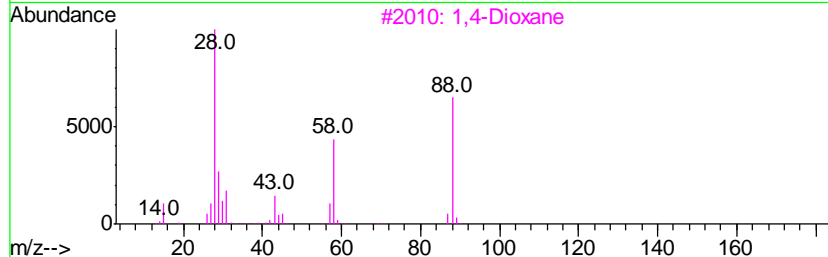
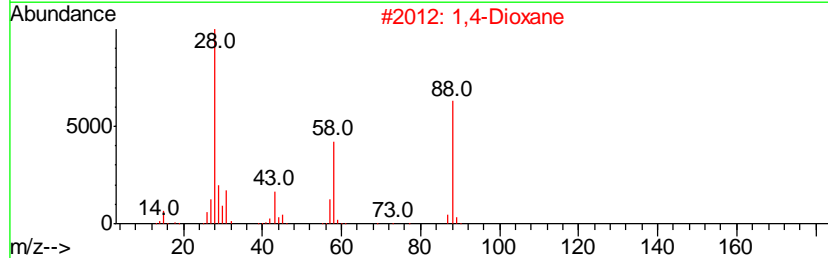
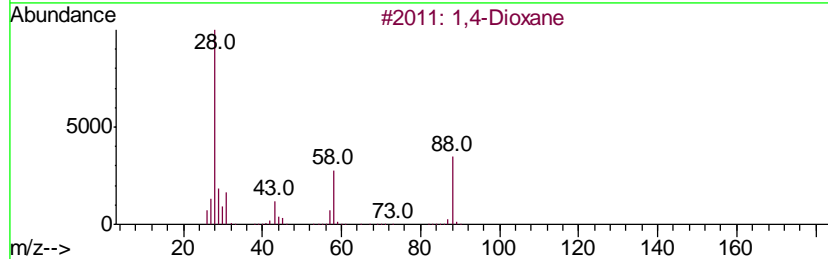
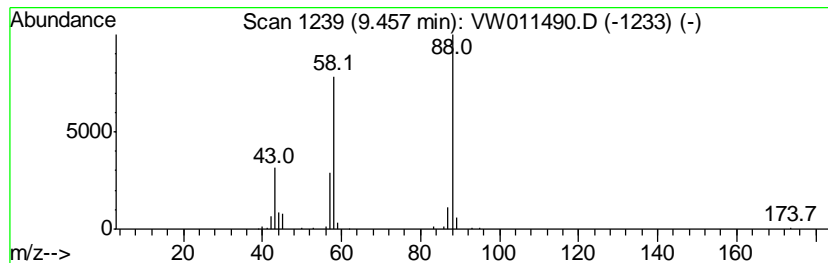
Quant Method : Z:\VOASRV\HPCHEM1\MSVOA\_W\METHOD\SOM2WLM072219S.M  
 Quant Title : VOC Analysis

TIC Library : C:\DATABASE\NIST11.L  
 TIC Integration Parameters: LSCINT.P

\*\*\*\*\*  
 Peak Number 1 1,4-Dioxane Concentration Rank 3

R.T.	EstConc	Area	Relative to ISTD	R.T.
9.46	1.44 ug/L	65652	1,4-Difluorobenzene	8.84

Hit#	of	Tentative ID	MW	MolForm	CAS#	Qual
1	5	1,4-Dioxane	88	C4H8O2	000123-91-1	91
2		1,4-Dioxane	88	C4H8O2	000123-91-1	91
3		1,4-Dioxane	88	C4H8O2	000123-91-1	90
4		1,4-Dioxane	88	C4H8O2	000123-91-1	83
5		Urea, N,N'-dimethyl-	88	C3H8N2O	000096-31-1	72



Data Path : Z:\VOASRV\HPCHEM1\MSVOA W\DATA\VW072619\  
 Data File : VW011490.D  
 Acq On : 25 Jul 2019 10:42  
 Operator : SY/VA  
 Sample : K3979-01  
 Misc : 5.00G/10ML/MSVOA W/SOIL  
 ALS Vial : 1 Sample Multiplier: 1

Instrument :  
 MSVOA\_W  
 ClientSampled :  
 DB908

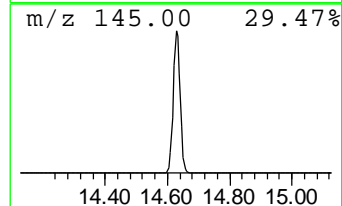
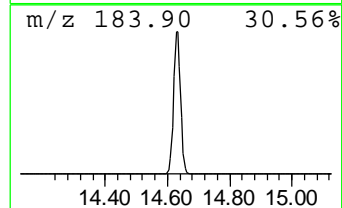
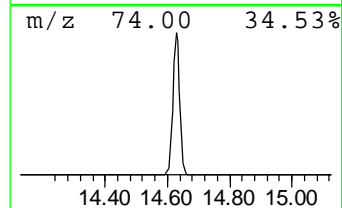
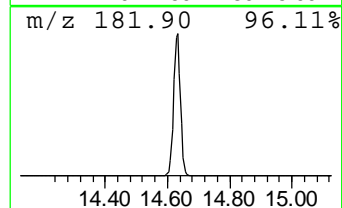
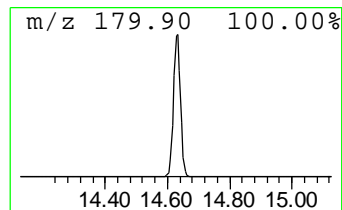
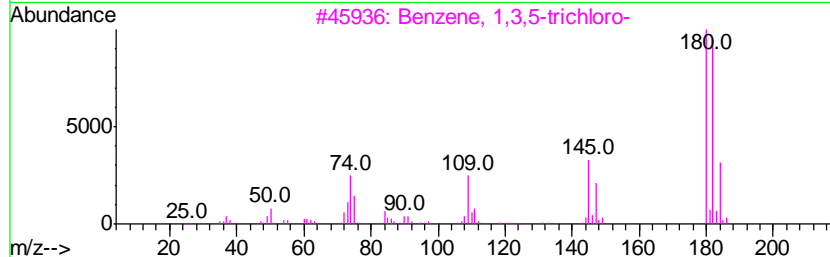
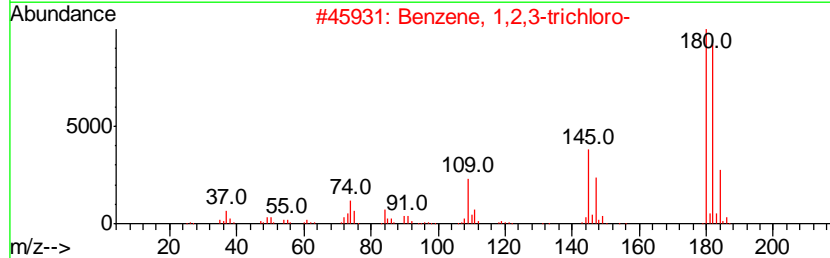
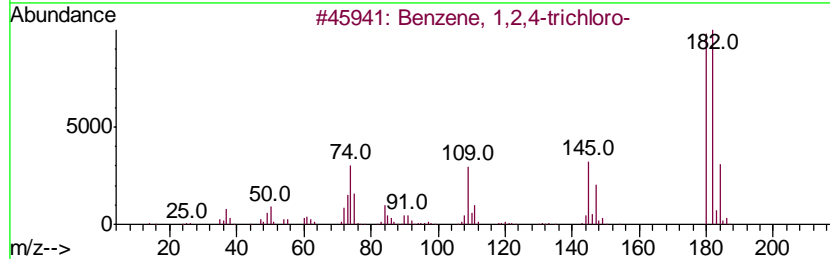
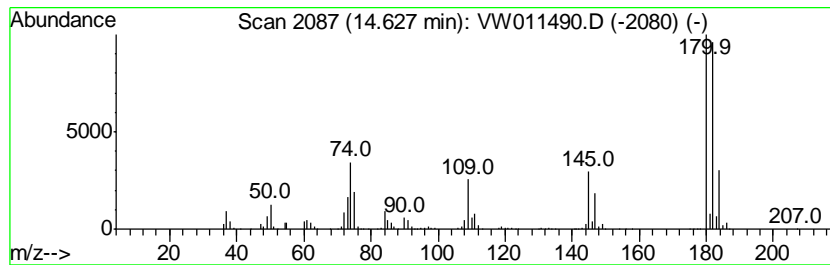
Quant Method : Z:\VOASRV\HPCHEM1\MSVOA\_W\METHOD\SOM2WLM072219S.M  
 Quant Title : VOC Analysis

TIC Library : C:\DATABASE\NIST11.L  
 TIC Integration Parameters: LSCINT.P

\*\*\*\*\*  
 Peak Number 3 Benzene, 1,3,5-trichloro- Concentration Rank 1

R.T.	EstConc	Area	Relative to ISTD	R.T.
14.63	23.92 ug/L	1205400	1,4-Dichlorobenzene-d4	13.56

Hit#	of	Tentative ID	MW	MolForm	CAS#	Qual
1	5	Benzene, 1,2,4-trichloro-	180	C6H3Cl3	000120-82-1	98
2		Benzene, 1,2,3-trichloro-	180	C6H3Cl3	000087-61-6	98
3		Benzene, 1,3,5-trichloro-	180	C6H3Cl3	000108-70-3	97
4		Benzene, 1,2,4-trichloro-	180	C6H3Cl3	000120-82-1	97
5		Benzene, 1,3,5-trichloro-	180	C6H3Cl3	000108-70-3	97



Data Path : Z:\VOASRV\HPCHEM1\MSVOA W\DATA\VW072619\  
 Data File : VW011490.D  
 Acq On : 25 Jul 2019 10:42  
 Operator : SY/VA  
 Sample : K3979-01  
 Misc : 5.00G/10ML/MSVOA W/SOIL  
 ALS Vial : 1 Sample Multiplier: 1

Instrument :  
 MSVOA\_W  
 ClientSampled :  
 DB908

Quant Method : Z:\VOASRV\HPCHEM1\MSVOA\_W\METHOD\SOM2WLM072219S.M  
 Quant Title : VOC Analysis

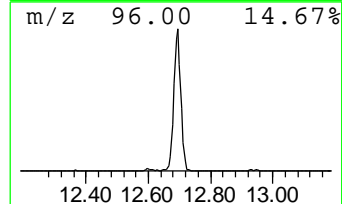
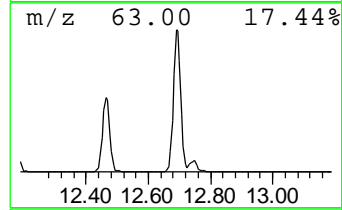
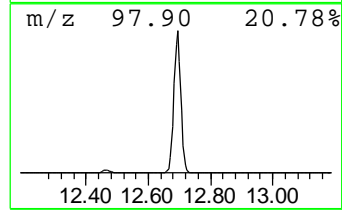
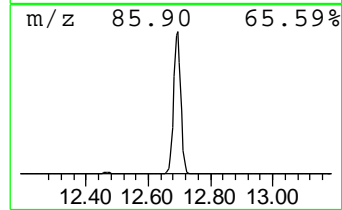
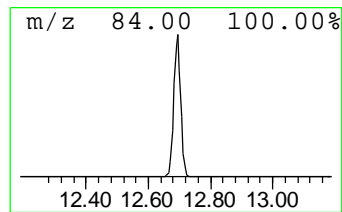
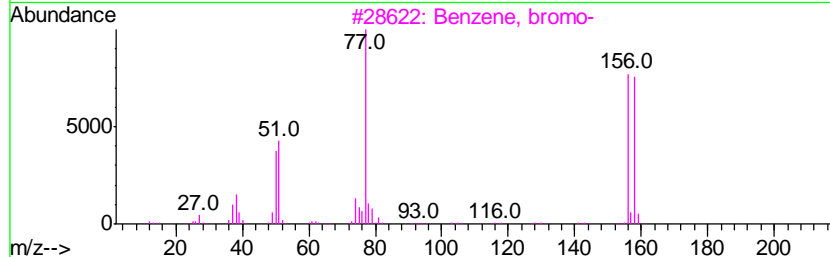
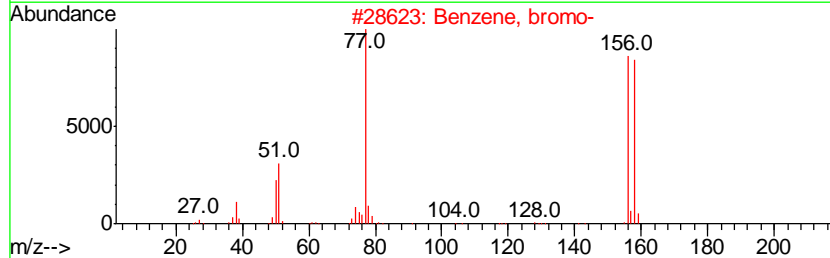
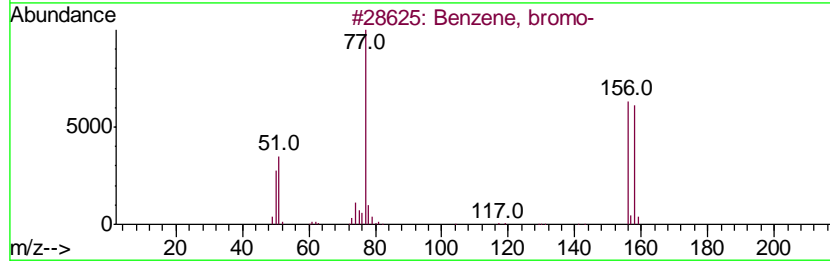
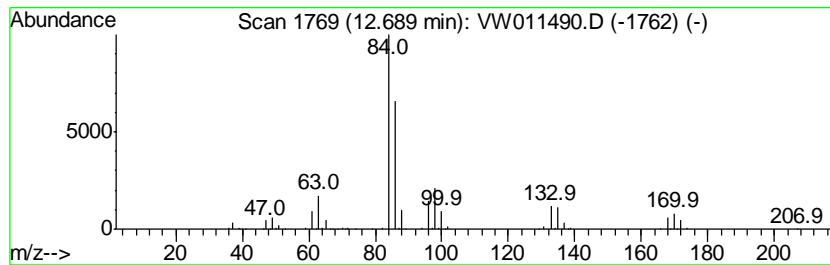
TIC Library : C:\DATABASE\NIST11.L  
 TIC Integration Parameters: LSCINT.P

\*\*\*\*\*  
 Peak Number 4 Benzene, bromo- Concentration Rank 4

R.T.	EstConc	Area	Relative to ISTD	R.T.
12.69	10.09 ug/L	508379	1,4-Dichlorobenzene-d4	13.56

Hit#	of	Tentative ID	MW	MolForm	CAS#	Qual
1	5	Benzene, bromo-	156	C6H5Br	000108-86-1	83
2		Benzene, bromo-	156	C6H5Br	000108-86-1	64
3		Benzene, bromo-	156	C6H5Br	000108-86-1	64
4		Benzene, bromo-	156	C6H5Br	000108-86-1	64
5		Benzene, bromo-	156	C6H5Br	000108-86-1	58



Data Path : Z:\VOASRV\HPCHEM1\MSVOA\_W\DATA\VW072619\  
Data File : VW011490.D  
Acq On : 25 Jul 2019 10:42  
Operator : SY/VA  
Sample : K3979-01  
Misc : 5.00G/10ML/MSVOA\_W/SOIL  
ALS Vial : 1 Sample Multiplier: 1

Instrument :  
MSVOA\_W  
ClientSampleId :  
DB908

Quant Method : Z:\VOASRV\HPCHEM1\MSVOA\_W\METHOD\SOM2WLM072219S.M  
Quant Title : VOC Analysis

TIC Library : C:\DATABASE\NIST11.L  
TIC Integration Parameters: LSCINT.P

TIC Top Hit name	RT	EstConc	Units	Response	--Internal Standard--			
					#	RT	Resp	Conc
1,4-Dioxane	9.46	1.4	ug/L	65652	1	8.84	1140100	25.0
Benzene, 1,3,5-tr...	14.63	23.9	ug/L	1205400	3	13.56	1259940	25.0
Benzene, bromo-	12.69	10.1	ug/L	508379	3	13.56	1259940	25.0