

Data Path : Z:\voasrv\HPCHEM1\MSVOA_W\Data\VW072623\
 Data File : VW026661.D
 Acq On : 26 Jul 2023 15:14
 Operator : SY/MD
 Sample : 03754-14
 Misc : 5.64g/10mL/MSVOA_W/SOIL
 ALS Vial : 1 Sample Multiplier: 1

Instrument :
 MSVOA_W
 ClientSampleId :
 BH2T7

Integration Parameters: LSCINT.P

Integrator: RTE
 Smoothing : OFF
 Sampling : 1
 Start Thrs : 0.2
 Stop Thrs : 0

Filtering: 5
 Min Area: 0 % of largest Peak
 Max Peaks: 100
 Peak Location: TOP

If leading or trailing edge < 100 prefer < Baseline drop else tangent >
 Peak separation: 5

Method : Z:\voasrv\HPCHEM1\MSVOA_W\Method\SFAMWLM071123SMA.M
 Title : SFAM01.0

Signal : TIC: VW026661.D\data.ms

| peak # | R.T. min | first scan | max scan | last scan | PK TY | peak height | corr. area | corr. % max. | % of total |
|--------|----------|------------|----------|-----------|-------|-------------|------------|--------------|------------|
| 1 | 2.363 | 72 | 78 | 95 | rBV | 110383 | 332574 | 11.15% | 1.485% |
| 2 | 2.893 | 159 | 165 | 181 | rBV2 | 98817 | 305378 | 10.23% | 1.364% |
| 3 | 3.381 | 240 | 245 | 247 | rBV4 | 2419 | 4561 | 0.15% | 0.020% |
| 4 | 3.527 | 266 | 269 | 270 | rBV3 | 1661 | 1550 | 0.05% | 0.007% |
| 5 | 3.686 | 292 | 295 | 296 | rVV3 | 1171 | 1294 | 0.04% | 0.006% |
| 6 | 3.765 | 305 | 308 | 311 | rBV5 | 1018 | 1583 | 0.05% | 0.007% |
| 7 | 3.893 | 327 | 329 | 331 | rBV3 | 1467 | 1230 | 0.04% | 0.005% |
| 8 | 3.942 | 335 | 337 | 339 | rBV2 | 1418 | 1320 | 0.04% | 0.006% |
| 9 | 4.027 | 339 | 351 | 380 | rVV2 | 238961 | 930993 | 31.20% | 4.158% |
| 10 | 4.387 | 401 | 410 | 422 | rBV3 | 12723 | 43822 | 1.47% | 0.196% |
| 11 | 4.564 | 437 | 439 | 442 | rBV4 | 1192 | 1633 | 0.05% | 0.007% |
| 12 | 4.600 | 442 | 445 | 447 | rBV3 | 1191 | 1483 | 0.05% | 0.007% |
| 13 | 4.917 | 486 | 497 | 499 | rBV3 | 25981 | 58377 | 1.96% | 0.261% |
| 14 | 5.070 | 520 | 522 | 524 | rBV3 | 1184 | 1324 | 0.04% | 0.006% |
| 15 | 5.106 | 524 | 528 | 532 | rVV6 | 2612 | 5619 | 0.19% | 0.025% |
| 16 | 5.253 | 550 | 552 | 555 | rVB4 | 1258 | 1201 | 0.04% | 0.005% |
| 17 | 5.295 | 555 | 559 | 566 | rVB8 | 2040 | 4140 | 0.14% | 0.018% |
| 18 | 5.374 | 569 | 572 | 573 | rBV3 | 1148 | 1444 | 0.05% | 0.006% |
| 19 | 5.442 | 579 | 583 | 585 | rVV4 | 1170 | 1825 | 0.06% | 0.008% |
| 20 | 5.460 | 585 | 586 | 589 | rVB3 | 1894 | 1633 | 0.05% | 0.007% |
| 21 | 5.539 | 597 | 599 | 601 | rBV3 | 1442 | 1694 | 0.06% | 0.008% |
| 22 | 5.673 | 620 | 621 | 624 | rBV3 | 1425 | 1617 | 0.05% | 0.007% |
| 23 | 5.746 | 631 | 633 | 636 | rVB4 | 1337 | 1200 | 0.04% | 0.005% |
| 24 | 5.941 | 656 | 665 | 675 | rVV8 | 6951 | 22624 | 0.76% | 0.101% |
| 25 | 6.045 | 680 | 682 | 685 | rBV4 | 1496 | 1628 | 0.05% | 0.007% |
| 26 | 6.319 | 723 | 727 | 730 | rBV5 | 1183 | 1625 | 0.05% | 0.007% |
| 27 | 6.411 | 738 | 742 | 745 | rVB6 | 1336 | 2275 | 0.08% | 0.010% |
| 28 | 6.441 | 745 | 747 | 749 | rBV3 | 1498 | 1587 | 0.05% | 0.007% |
| 29 | 6.472 | 749 | 752 | 755 | rVV5 | 1997 | 2232 | 0.07% | 0.010% |
| 30 | 6.515 | 757 | 759 | 762 | rBV4 | 1618 | 2100 | 0.07% | 0.009% |
| 31 | 6.551 | 762 | 765 | 768 | rBV5 | 1448 | 2108 | 0.07% | 0.009% |
| 32 | 6.594 | 770 | 772 | 776 | rVB5 | 1050 | 1267 | 0.04% | 0.006% |
| 33 | 6.661 | 778 | 783 | 784 | rBV4 | 1050 | 1879 | 0.06% | 0.008% |
| 34 | 6.801 | 804 | 806 | 809 | rBV4 | 1126 | 1495 | 0.05% | 0.007% |
| 35 | 6.911 | 817 | 824 | 825 | rBV6 | 3369 | 5975 | 0.20% | 0.027% |
| 36 | 7.075 | 842 | 851 | 855 | rBV | 91682 | 238755 | 8.00% | 1.066% |

Data Path : Z:\voasrv\HPCHEM1\MSVOA_W\Data\VW072623\
 Data File : VW026661.D
 Acq On : 26 Jul 2023 15:14
 Operator : SY/MD
 Sample : 03754-14
 Misc : 5.64g/10mL/MSVOA_W/SOIL
 ALS Vial : 1 Sample Multiplier: 1

Instrument :
 MSVOA_W
 ClientSampleId :
 BH2T7

Integration Parameters: LSCINT.P

Integrator: RTE
 Smoothing : OFF
 Sampling : 1
 Start Thrs : 0.2
 Stop Thrs : 0

Filtering: 5
 Min Area: 0 % of largest Peak
 Max Peaks: 100
 Peak Location: TOP

If leading or trailing edge < 100 prefer < Baseline drop else tangent >
 Peak separation: 5

Method : Z:\voasrv\HPCHEM1\MSVOA_W\Method\SFAMWLM071123SMA.M
 Title : SFAM01.0

| | | | | | | | | | |
|----|--------|------|------|------|-------|---------|---------|---------|---------|
| 37 | 7.136 | 857 | 861 | 876 | rVB | 117211 | 305478 | 10.24% | 1.364% |
| 38 | 7.399 | 900 | 904 | 908 | rBV7 | 1819 | 3447 | 0.12% | 0.015% |
| 39 | 7.648 | 935 | 945 | 958 | rBB | 511505 | 1239949 | 41.56% | 5.538% |
| 40 | 7.953 | 990 | 995 | 1003 | rVB8 | 4176 | 10122 | 0.34% | 0.045% |
| 41 | 8.276 | 1038 | 1048 | 1064 | rBV2 | 1007487 | 2983725 | 100.00% | 13.325% |
| 42 | 8.600 | 1099 | 1101 | 1102 | rBV2 | 1654 | 1394 | 0.05% | 0.006% |
| 43 | 8.691 | 1112 | 1116 | 1122 | rVB8 | 3850 | 8434 | 0.28% | 0.038% |
| 44 | 8.843 | 1132 | 1141 | 1152 | rBV | 1074229 | 2112851 | 70.81% | 9.436% |
| 45 | 9.276 | 1203 | 1212 | 1223 | rBV | 714657 | 1464685 | 49.09% | 6.541% |
| 46 | 9.508 | 1246 | 1250 | 1254 | rVB | 7679 | 13998 | 0.47% | 0.063% |
| 47 | 9.770 | 1289 | 1293 | 1294 | rBV3 | 2546 | 3766 | 0.13% | 0.017% |
| 48 | 9.916 | 1314 | 1317 | 1321 | rBV5 | 1392 | 2067 | 0.07% | 0.009% |
| 49 | 10.032 | 1329 | 1336 | 1347 | rVB | 344947 | 634019 | 21.25% | 2.832% |
| 50 | 10.319 | 1376 | 1383 | 1394 | rBV | 1299143 | 2372887 | 79.53% | 10.597% |
| 51 | 10.575 | 1419 | 1425 | 1437 | rVV | 221874 | 400875 | 13.44% | 1.790% |
| 52 | 10.703 | 1440 | 1446 | 1452 | rVB | 42471 | 77736 | 2.61% | 0.347% |
| 53 | 10.843 | 1465 | 1469 | 1471 | rBV5 | 2165 | 3891 | 0.13% | 0.017% |
| 54 | 10.922 | 1475 | 1482 | 1499 | rBV | 356743 | 624011 | 20.91% | 2.787% |
| 55 | 11.062 | 1500 | 1505 | 1515 | rVB4 | 18575 | 37977 | 1.27% | 0.170% |
| 56 | 11.434 | 1558 | 1566 | 1578 | rVB3 | 14232 | 29535 | 0.99% | 0.132% |
| 57 | 11.514 | 1578 | 1579 | 1582 | rBV3 | 1594 | 1442 | 0.05% | 0.006% |
| 58 | 11.629 | 1589 | 1598 | 1608 | rBV | 1511833 | 2483420 | 83.23% | 11.091% |
| 59 | 11.800 | 1623 | 1626 | 1627 | rVV3 | 1357 | 1279 | 0.04% | 0.006% |
| 60 | 11.831 | 1629 | 1631 | 1642 | rVV3 | 3321 | 7348 | 0.25% | 0.033% |
| 61 | 12.160 | 1682 | 1685 | 1694 | rVB10 | 4902 | 9642 | 0.32% | 0.043% |
| 62 | 12.245 | 1694 | 1699 | 1701 | rBV6 | 1374 | 1917 | 0.06% | 0.009% |
| 63 | 12.263 | 1701 | 1702 | 1708 | rVB6 | 1653 | 2002 | 0.07% | 0.009% |
| 64 | 12.343 | 1712 | 1715 | 1716 | rBV3 | 1467 | 1655 | 0.06% | 0.007% |
| 65 | 12.465 | 1730 | 1735 | 1738 | rVV6 | 1860 | 3624 | 0.12% | 0.016% |
| 66 | 12.556 | 1745 | 1750 | 1751 | rBV4 | 1552 | 2146 | 0.07% | 0.010% |
| 67 | 12.605 | 1751 | 1758 | 1765 | rVV | 39770 | 77916 | 2.61% | 0.348% |
| 68 | 12.690 | 1765 | 1772 | 1779 | rVV | 537731 | 874388 | 29.31% | 3.905% |
| 69 | 12.751 | 1779 | 1782 | 1792 | rVB2 | 10596 | 18576 | 0.62% | 0.083% |
| 70 | 12.885 | 1800 | 1804 | 1805 | rBV4 | 1522 | 2126 | 0.07% | 0.009% |
| 71 | 12.934 | 1808 | 1812 | 1818 | rVB8 | 5972 | 12145 | 0.41% | 0.054% |
| 72 | 13.032 | 1825 | 1828 | 1831 | rBV5 | 1696 | 2334 | 0.08% | 0.010% |
| 73 | 13.184 | 1851 | 1853 | 1856 | rVV3 | 2472 | 2615 | 0.09% | 0.012% |
| 74 | 13.215 | 1856 | 1858 | 1859 | rVV2 | 1707 | 1452 | 0.05% | 0.006% |
| 75 | 13.251 | 1860 | 1864 | 1867 | rVV5 | 5763 | 9190 | 0.31% | 0.041% |
| 76 | 13.288 | 1867 | 1870 | 1875 | rVB5 | 5119 | 8191 | 0.27% | 0.037% |

Data Path : Z:\voasrv\HPCHEM1\MSVOA_W\Data\VW072623\
 Data File : VW026661.D
 Acq On : 26 Jul 2023 15:14
 Operator : SY/MD
 Sample : 03754-14
 Misc : 5.64g/10mL/MSVOA_W/SOIL
 ALS Vial : 1 Sample Multiplier: 1

Instrument :
 MSVOA_W
 ClientSampleId :
 BH2T7

Integration Parameters: LSCINT.P

Integrator: RTE
 Smoothing : OFF Filtering: 5
 Sampling : 1 Min Area: 0 % of largest Peak
 Start Thrs: 0.2 Max Peaks: 100
 Stop Thrs : 0 Peak Location: TOP

If leading or trailing edge < 100 prefer < Baseline drop else tangent >
 Peak separation: 5

Method : Z:\voasrv\HPCHEM1\MSVOA_W\Method\SFAMWLM071123SMA.M
 Title : SFAM01.0

| | | | | | | | | | |
|-----|--------|------|------|------|------|---------|---------|--------|---------|
| 77 | 13.397 | 1882 | 1888 | 1894 | rBV8 | 7689 | 16868 | 0.57% | 0.075% |
| 78 | 13.471 | 1896 | 1900 | 1901 | rBV3 | 3181 | 4038 | 0.14% | 0.018% |
| 79 | 13.556 | 1907 | 1914 | 1925 | rBV | 1499920 | 2387404 | 80.01% | 10.662% |
| 80 | 13.641 | 1926 | 1928 | 1936 | rVB7 | 8813 | 14187 | 0.48% | 0.063% |
| 81 | 13.849 | 1955 | 1962 | 1975 | rVB | 1161002 | 1934936 | 64.85% | 8.641% |
| 82 | 14.062 | 1992 | 1997 | 2010 | rVB2 | 19329 | 40481 | 1.36% | 0.181% |
| 83 | 14.184 | 2014 | 2017 | 2021 | rVV6 | 2184 | 2974 | 0.10% | 0.013% |
| 84 | 14.233 | 2021 | 2025 | 2027 | rVB5 | 1256 | 1554 | 0.05% | 0.007% |
| 85 | 14.318 | 2032 | 2039 | 2047 | rBV6 | 16181 | 32519 | 1.09% | 0.145% |
| 86 | 14.519 | 2068 | 2072 | 2078 | rVB9 | 2775 | 4792 | 0.16% | 0.021% |
| 87 | 14.623 | 2085 | 2089 | 2093 | rVB5 | 3720 | 5840 | 0.20% | 0.026% |
| 88 | 14.678 | 2096 | 2098 | 2100 | rBV3 | 2024 | 2083 | 0.07% | 0.009% |
| 89 | 14.720 | 2100 | 2105 | 2109 | rVB7 | 4371 | 7995 | 0.27% | 0.036% |
| 90 | 14.751 | 2109 | 2110 | 2113 | rBV3 | 1744 | 1582 | 0.05% | 0.007% |
| 91 | 14.781 | 2113 | 2115 | 2119 | rBV5 | 1366 | 1673 | 0.06% | 0.007% |
| 92 | 15.080 | 2158 | 2164 | 2166 | rBV7 | 1687 | 2853 | 0.10% | 0.013% |
| 93 | 15.171 | 2174 | 2179 | 2187 | rBV8 | 13276 | 24784 | 0.83% | 0.111% |
| 94 | 15.354 | 2207 | 2209 | 2211 | rBV3 | 1985 | 2394 | 0.08% | 0.011% |
| 95 | 15.428 | 2216 | 2221 | 2226 | rVB3 | 24849 | 40846 | 1.37% | 0.182% |
| 96 | 15.751 | 2270 | 2274 | 2276 | rBV5 | 2178 | 2947 | 0.10% | 0.013% |
| 97 | 16.025 | 2317 | 2319 | 2323 | rVB5 | 2265 | 2584 | 0.09% | 0.012% |
| 98 | 16.092 | 2326 | 2330 | 2331 | rBV4 | 2315 | 3415 | 0.11% | 0.015% |
| 99 | 16.433 | 2380 | 2386 | 2388 | rBV7 | 1912 | 3992 | 0.13% | 0.018% |
| 100 | 16.470 | 2390 | 2392 | 2393 | rBV2 | 2049 | 1485 | 0.05% | 0.007% |

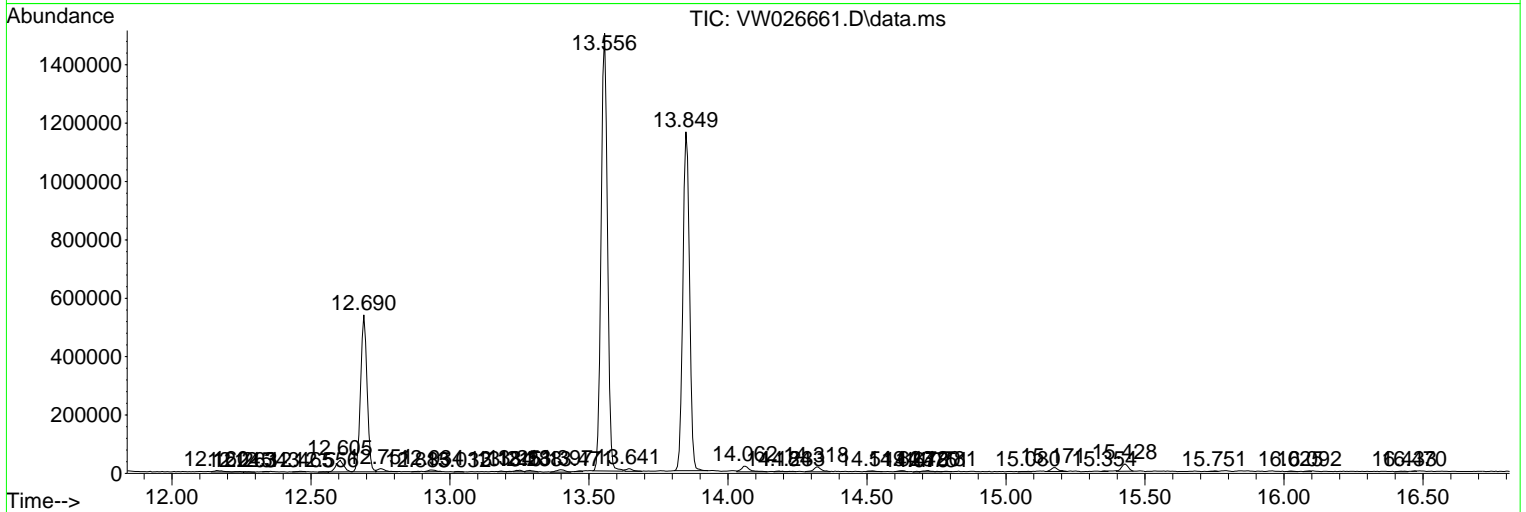
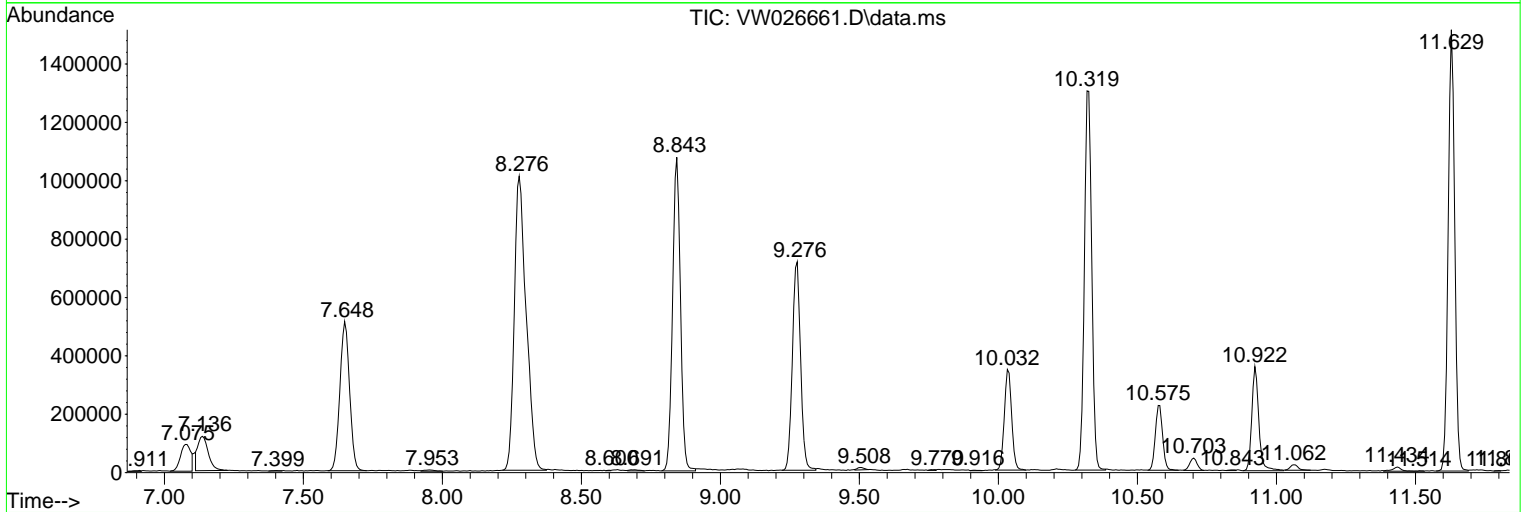
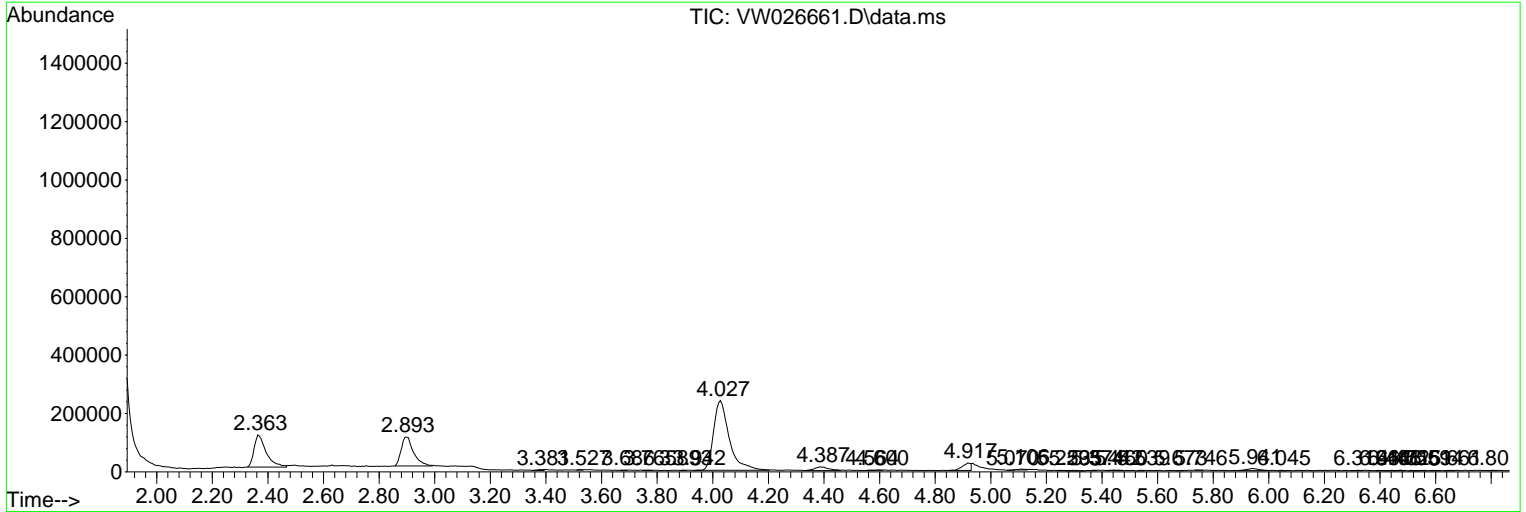
Sum of corrected areas: 22391526

Data Path : Z:\voasrv\HPCHEM1\MSVOA_W\Data\VW072623\
 Data File : VW026661.D
 Acq On : 26 Jul 2023 15:14
 Operator : SY/MD
 Sample : 03754-14
 Misc : 5.64g/10mL/MSVOA_W/SOIL
 ALS Vial : 1 Sample Multiplier: 1

Instrument :
 MSVOA_W
ClientSampleId :
 BH2T7

Quant Method : Z:\voasrv\HPCHEM1\MSVOA_W\Method\SFAMWLM071123SMA.M
 Quant Title : SFAM01.0

TIC Library : C:\Database\NIST20.L
 TIC Integration Parameters: LSCINT.P



Library Search Compound Report

Data Path : Z:\voasrv\HPCHEM1\MSVOA_W\Data\VW072623\
Data File : VW026661.D
Acq On : 26 Jul 2023 15:14
Operator : SY/MD
Sample : 03754-14
Misc : 5.64g/10mL/MSVOA_W/SOIL
ALS Vial : 1 Sample Multiplier: 1

Instrument :
MSVOA_W
ClientSampleId :
BH2T7

Quant Method : Z:\voasrv\HPCHEM1\MSVOA_W\Method\SFAMWLM071123SMA.M
Quant Title : SFAM01.0

TIC Library : C:\Database\NIST20.L
TIC Integration Parameters: LSCINT.P

No Library Search Compounds Detected

Data Path : Z:\voasrv\HPCHEM1\MSVOA_W\Data\VW072623\
Data File : VW026661.D
Acq On : 26 Jul 2023 15:14
Operator : SY/MD
Sample : 03754-14
Misc : 5.64g/10mL/MSVOA_W/SOIL
ALS Vial : 1 Sample Multiplier: 1

Instrument :
MSVOA_W
ClientSampleId :
BH2T7

Quant Method : Z:\voasrv\HPCHEM1\MSVOA_W\Method\SFAMWLM071123SMA.M
Quant Title : SFAM01.0

TIC Library : C:\Database\NIST0.L
TIC Integration Parameters: LSCINT.P

| TIC Top Hit name | RT | EstConc | Units | Response | --Internal Standard-- | | | |
|------------------|----|---------|-------|----------|-----------------------|----|------|------|
| | | | | | # | RT | Resp | Conc |
