

Data Path : Z:\VOASRV\HPCHEM1\MSVOA W\DATA\VW072718\
 Data File : VW004230.D
 Acq On : 26 Jul 2018 15:44
 Operator : SY/AP
 Sample : VSTDCCC025
 Misc : 5.00G/10ML/MSVOA W/SOIL
 ALS Vial : 1 Sample Multiplier: 1

Instrument :
 MSVOA_W
 ClientSampled :

Quant Time: Jul 27 01:50:45 2018
 Quant Method : Z:\VOASRV\HPCHEM1\MSVOA_W\METHOD\SOM2WLM072618S.M
 Quant Title : VOC Analysis
 QLast Update : Thu Jul 26 14:18:56 2018
 Response via : Initial Calibration

Internal Standards	R.T.	QIon	Response	Conc	Units	Dev(Min)
1) 1,4-Difluorobenzene	8.84	114	419492	25.00	ug/L	0.00
28) Chlorobenzene-d5	11.63	117	378704	25.00	ug/L	0.00
60) 1,4-Dichlorobenzene-d4	13.57	152	193404	25.00	ug/L	0.00

System Monitoring Compounds

4) Vinyl Chloride-d3	2.34	65	94459	22.37	ug/L	0.00
Spiked Amount	25.000	Range	30 - 150	Recovery	=	89.48%
7) Chloroethane-d5	2.89	69	69050	22.48	ug/L	0.00
Spiked Amount	25.000	Range	30 - 150	Recovery	=	89.92%
10) 1,1-Dichloroethene-d2	4.01	63	242552	24.06	ug/L	0.00
Spiked Amount	25.000	Range	45 - 110	Recovery	=	96.24%
20) 2-Butanone-d5	7.08	46	103894	43.46	ug/L	0.00
Spiked Amount	50.000	Range	20 - 135	Recovery	=	86.92%
24) Chloroform-d	7.65	84	252864	23.54	ug/L	0.00
Spiked Amount	25.000	Range	40 - 150	Recovery	=	94.16%
26) 1,2-Dichloroethane-d4	8.31	65	149503	23.14	ug/L	0.00
Spiked Amount	25.000	Range	70 - 130	Recovery	=	92.56%
29) Benzene-d6	8.28	84	501478	24.99	ug/L	0.00
Spiked Amount	25.000	Range	20 - 135	Recovery	=	99.96%
33) 1,2-Dichloropropane-d6	9.27	67	160494	24.04	ug/L	0.00
Spiked Amount	25.000	Range	70 - 120	Recovery	=	96.16%
37) Toluene-d8	10.32	98	483746	25.50	ug/L	0.00
Spiked Amount	25.000	Range	30 - 130	Recovery	=	102.00%
38) trans-1,3-Dichloropropene-	10.58	79	74755	24.67	ug/L	0.00
Spiked Amount	25.000	Range	30 - 135	Recovery	=	98.68%
39) 2-Hexanone-d5	10.93	63	81318	46.35	ug/L	0.00
Spiked Amount	50.000	Range	20 - 135	Recovery	=	92.70%
48) 1,1,2,2-Tetrachloroethane-	12.70	84	155983	22.88	ug/L	0.00
Spiked Amount	25.000	Range	45 - 120	Recovery	=	91.52%
61) 1,2-Dichlorobenzene-d4	13.86	152	170391	23.57	ug/L	0.00
Spiked Amount	25.000	Range	75 - 120	Recovery	=	94.28%

Target Compounds

Target Compounds	R.T.	QIon	Response	Conc	Units	Ovalue
2) Dichlorodifluoromethane	2.01	85	51327	18.394	ug/L	96
3) Chloromethane	2.21	50	93345	23.696	ug/L	98
5) Vinyl chloride	2.36	62	132873	25.279	ug/L	94
6) Bromomethane	2.78	94	73244	24.873	ug/L	99
8) Chloroethane	2.92	64	72555	25.686	ug/L	99
9) Trichlorofluoromethane	3.25	101	62662	24.633	ug/L	99
11) 1,1,2-Trichloro-1,2,2-trif	4.05	101	133310	26.598	ug/L	97
12) 1,1-Dichloroethene	4.03	96	126208	26.015	ug/L	88
13) Acetone	4.12	43	129925	53.820	ug/L	100
14) Carbon disulfide	4.37	76	431003	27.594	ug/L	98
15) Methyl Acetate	4.67	43	98046	24.416	ug/L	99
16) Methylene chloride	4.91	84	145891	24.805	ug/L	99
17) Methyl tert-butyl Ether	5.43	73	262692	27.276	ug/L	99
18) trans-1,2-Dichloroethene	5.41	96	142902	27.968	ug/L	99
19) 1,1-Dichloroethane	6.21	63	268905	27.017	ug/L	99
21) 2-Butanone	7.17	43	149606	49.166	ug/L	99
22) cis-1,2-Dichloroethene	7.17	96	156400	27.534	ug/L	99

Data Path : Z:\VOASRV\HPCHEM1\MSVOA W\DATA\VW072718\
 Data File : VW004230.D
 Acq On : 26 Jul 2018 15:44
 Operator : SY/AP
 Sample : VSTDCCC025
 Misc : 5.00G/10ML/MSVOA W/SOIL
 ALS Vial : 1 Sample Multiplier: 1

Instrument :
 MSVOA_W
 ClientSampleId :

Quant Time: Jul 27 01:50:45 2018
 Quant Method : Z:\VOASRV\HPCHEM1\MSVOA_W\METHOD\SOM2WLM072618S.M
 Quant Title : VOC Analysis
 QLast Update : Thu Jul 26 14:18:56 2018
 Response via : Initial Calibration

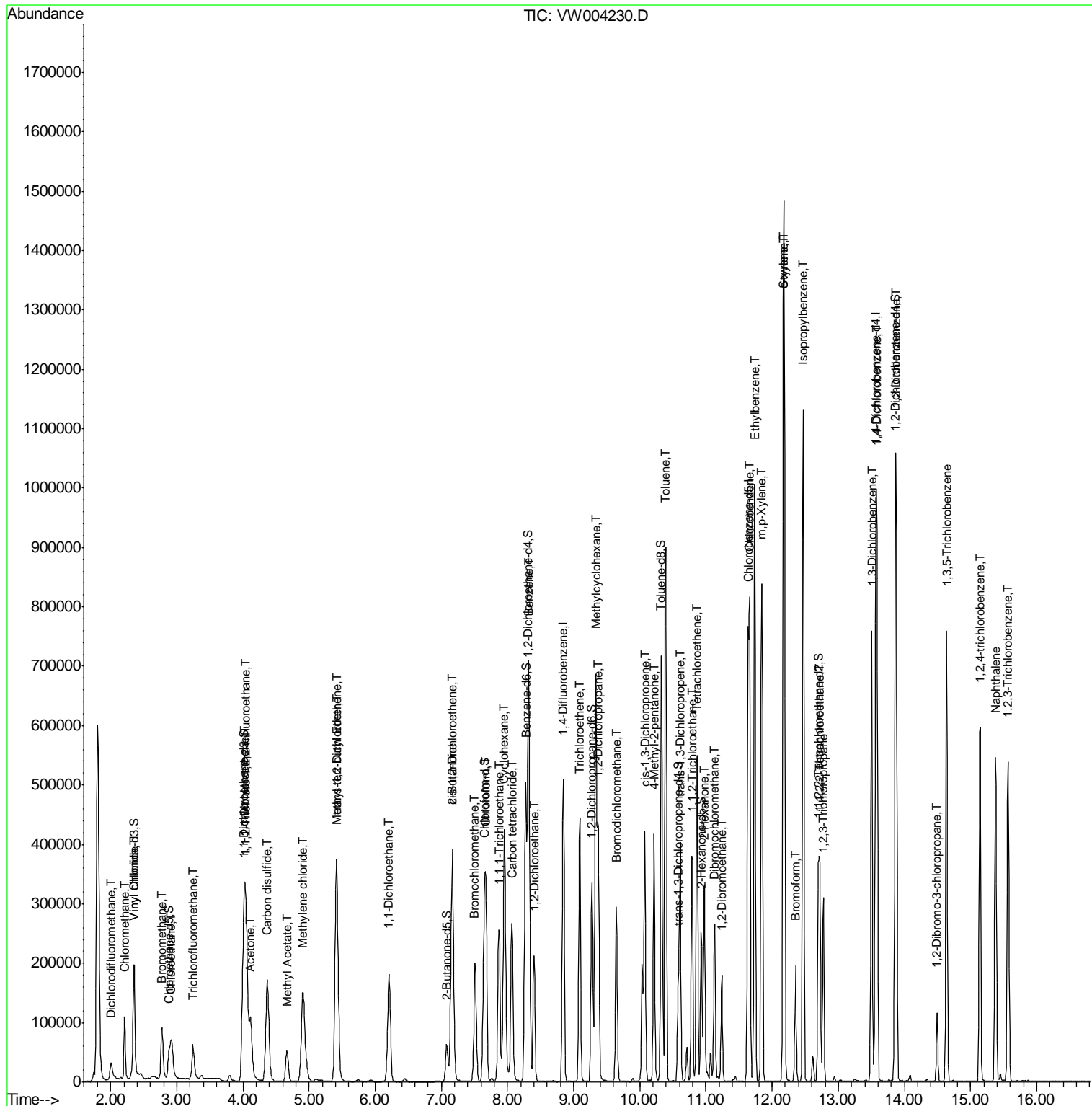
Internal Standards	R.T.	QIon	Response	Conc	Units	Dev(Min)
23) Bromochloromethane	7.51	128	70542	26.233	ug/L	98
25) Chloroform	7.67	83	269493	26.406	ug/L	100
27) 1,2-Dichloroethane	8.40	62	193338	25.755	ug/L	98
30) Cyclohexane	7.95	56	253567	30.259	ug/L	100
31) 1,1,1-Trichloroethane	7.87	97	212409	27.793	ug/L	99
32) Carbon tetrachloride	8.07	117	203930	27.435	ug/L	100
34) Benzene	8.32	78	608676	27.957	ug/L	100
35) Trichloroethene	9.09	95	154525	26.980	ug/L	100
36) Methylcyclohexane	9.34	83	274917	28.721	ug/L	99
40) 1,2-Dichloropropane	9.37	63	162430	27.478	ug/L	100
41) Bromodichloromethane	9.65	83	196064	26.860	ug/L	99
42) cis-1,3-Dichloropropene	10.07	75	239758	27.883	ug/L	98
43) 4-Methyl-2-pentanone	10.21	43	275206	52.261	ug/L	100
44) Toluene	10.39	91	647188	28.126	ug/L	99
45) trans-1,3-Dichloropropene	10.61	75	216666	27.477	ug/L	99
46) 1,1,2-Trichloroethane	10.79	97	120206	26.191	ug/L	98
47) Tetrachloroethene	10.87	164	125360	27.362	ug/L	95
49) 2-Hexanone	10.98	43	207706	50.340	ug/L	94
50) Dibromochloromethane	11.13	129	138247	26.411	ug/L	96
51) 1,2-Dibromoethane	11.24	107	117705	26.304	ug/L	94
52) Chlorobenzene	11.66	112	398034	27.141	ug/L	95
53) Ethylbenzene	11.74	91	710992	28.635	ug/L	97
54) m,p-Xylene	11.84	106	266187	28.503	ug/L	98
55) o-xylene	12.17	106	245012	28.031	ug/L	95
56) Styrene	12.18	104	441274	29.127	ug/L	99
57) Isopropylbenzene	12.47	105	689986	29.056	ug/L	99
58) 1,1,2,2-Tetrachloroethane	12.72	83	166679	25.475	ug/L	94
59) 1,2,3-Trichloropropane	12.77	75	127942	25.435	ug/L	98
62) Bromoform	12.35	173	89729	25.842	ug/L	99
63) 1,3-Dichlorobenzene	13.51	146	306337	26.920	ug/L	98
64) 1,4-Dichlorobenzene	13.59	146	319729	26.609	ug/L	99
65) 1,2-Dichlorobenzene	13.88	146	298671	26.940	ug/L	99
66) 1,2-Dibromo-3-chloropropan	14.49	75	29035	23.319	ug/L	95
67) 1,3,5-Trichlorobenzene	14.64	180	237246	26.952	ug/L	99
68) 1,2,4-trichlorobenzene	15.15	180	194025	27.027	ug/L	99
69) Naphthalene	15.38	128	450802	27.329	ug/L	99
70) 1,2,3-Trichlorobenzene	15.57	180	189335	27.262	ug/L	99

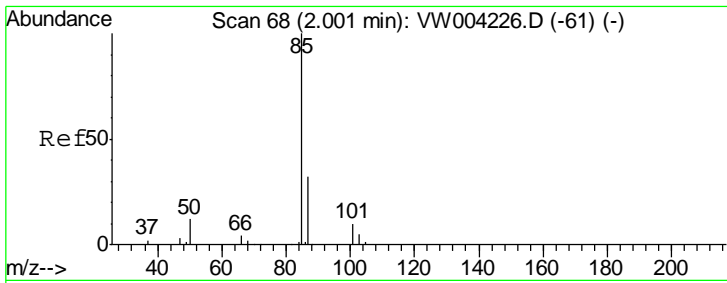
(#) = qualifier out of range (m) = manual integration (+) = signals summed

Data Path : Z:\VOASRV\HPCHEM1\MSVOA W\DATA\VW072718\
 Data File : VW004230.D
 Acq On : 26 Jul 2018 15:44
 Operator : SY/AP
 Sample : VSTDCCC025
 Misc : 5.00G/10ML/MSVOA W/SOIL
 ALS Vial : 1 Sample Multiplier: 1

Instrument :
 MSVOA_W
 Client Sampled :

Quant Time: Jul 27 01:50:45 2018
 Quant Method : Z:\VOASRV\HPCHEM1\MSVOA_W\METHOD\SOM2WLM072618S.M
 Quant Title : VOC Analysis
 QLast Update : Thu Jul 26 14:18:56 2018
 Response via : Initial Calibration

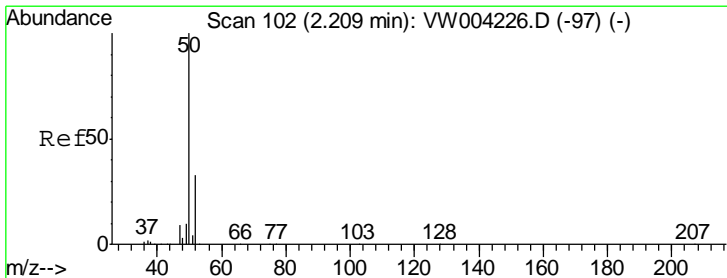
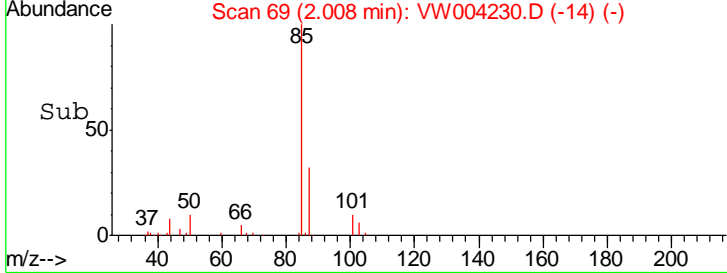
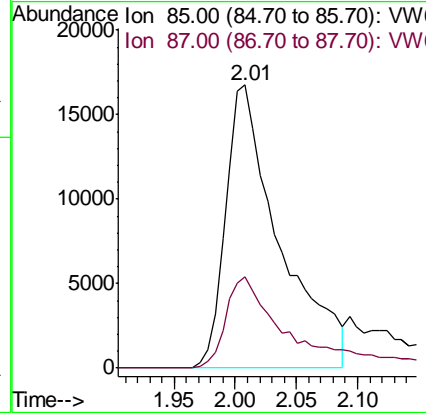
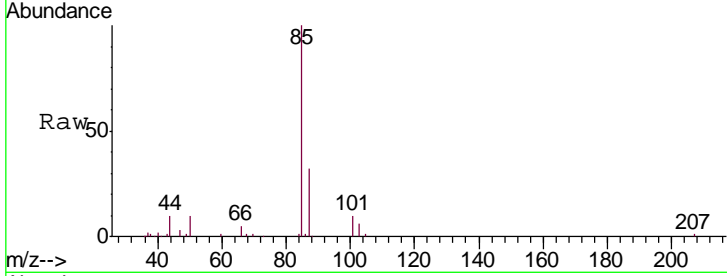




#2
 Dichlorodifluoromethane
 Concen: 18.394 ug/L
 RT: 2.01 min Scan# 69
 Delta R.T. 0.01 min
 Lab File: VW004230.D
 Acq: 26 Jul 2018 15:44

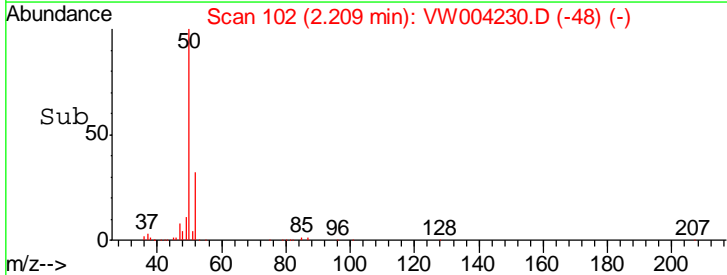
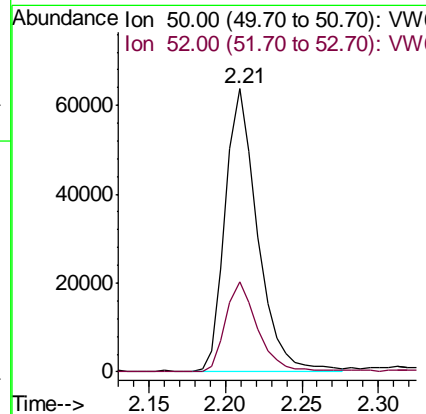
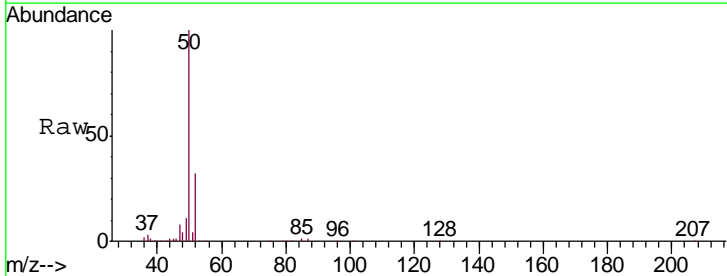
Instrument :
 MSVOA_W
 ClientSampled :

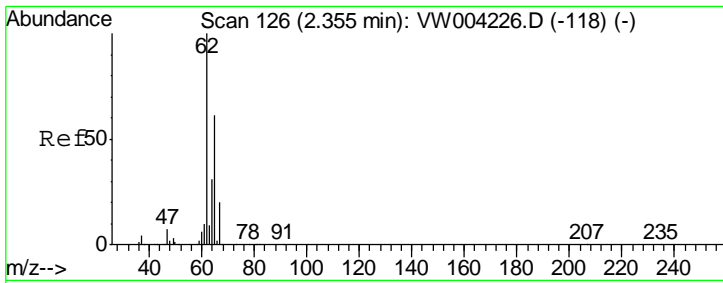
Tgt Ion: 85 Resp: 51327
 Ion Ratio Lower Upper
 85 100
 87 34.5 22.7 42.3



#3
 Chloromethane
 Concen: 23.696 ug/L
 RT: 2.21 min Scan# 102
 Delta R.T. 0.00 min
 Lab File: VW004230.D
 Acq: 26 Jul 2018 15:44

Tgt Ion: 50 Resp: 93345
 Ion Ratio Lower Upper
 50 100
 52 31.9 23.2 43.2

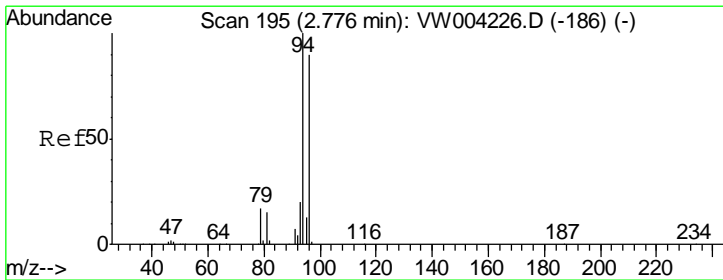
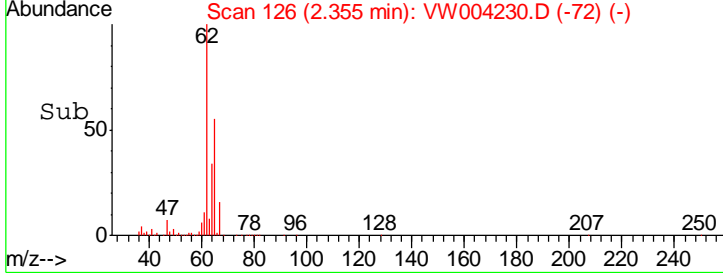
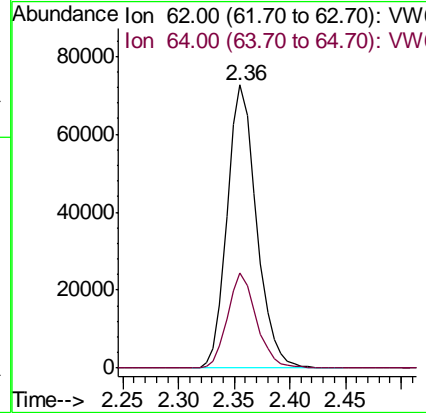
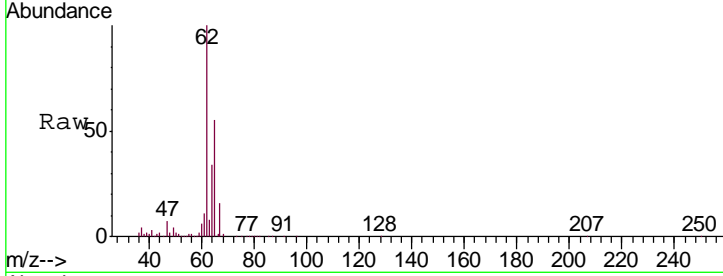




#5
 Vinyl chloride
 Concen: 25.279 ug/L
 RT: 2.36 min Scan# 126
 Delta R.T. 0.00 min
 Lab File: VW004230.D
 Acq: 26 Jul 2018 15:44

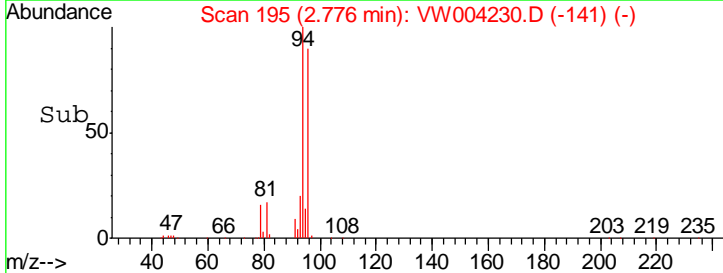
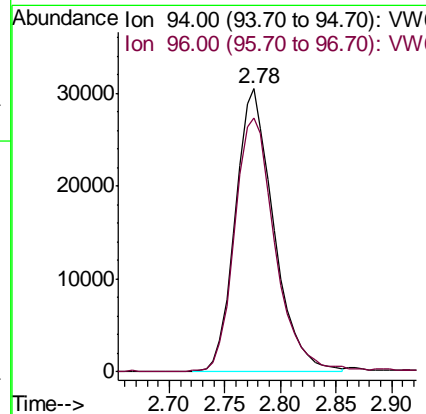
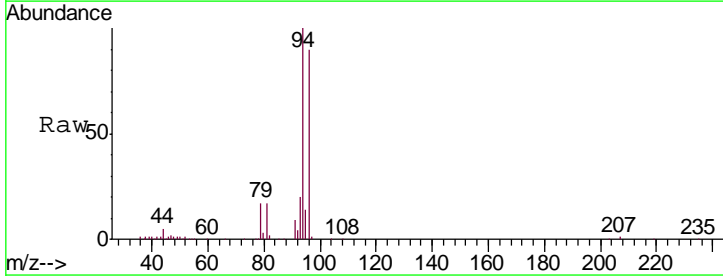
Instrument :
 MSVOA_W
 ClientSampled :

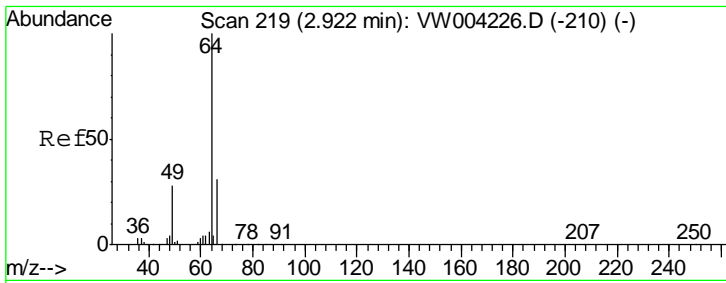
Tgt Ion	Resp	Lower	Upper
62	132873		
64	33.8	21.4	39.8



#6
 Bromomethane
 Concen: 24.873 ug/L
 RT: 2.78 min Scan# 195
 Delta R.T. 0.00 min
 Lab File: VW004230.D
 Acq: 26 Jul 2018 15:44

Tgt Ion	Resp	Lower	Upper
94	73244		
96	93.3	9.2	175.6

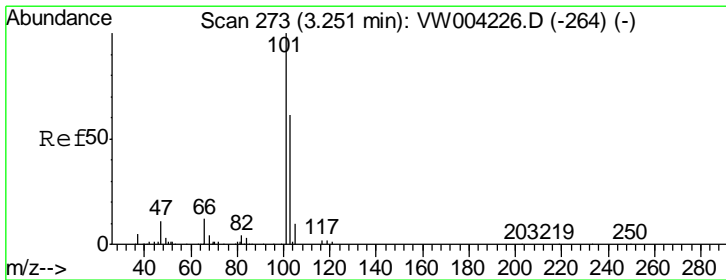
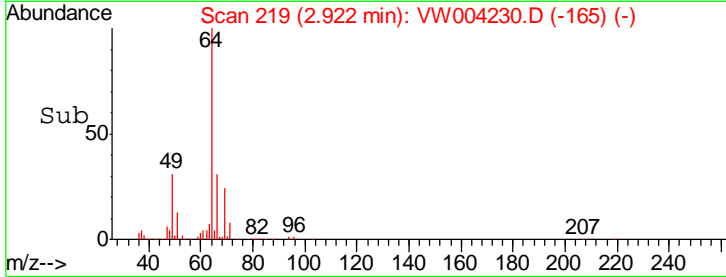
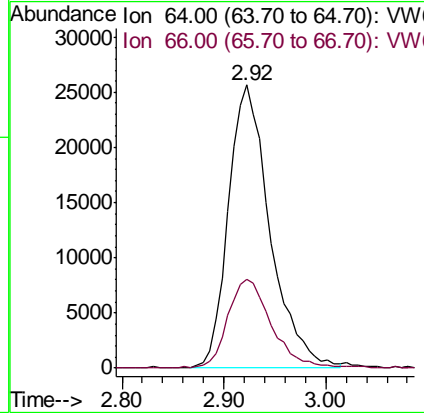
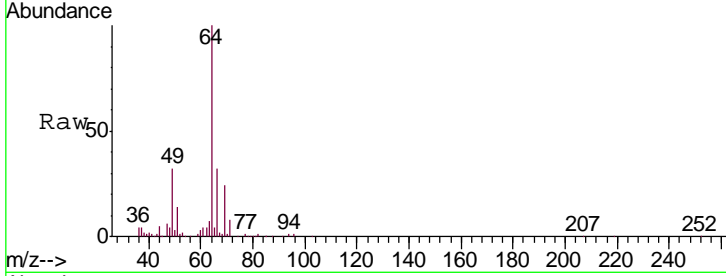




#8
 Chloroethane
 Concen: 25.686 ug/L
 RT: 2.92 min Scan# 219
 Delta R.T. 0.00 min
 Lab File: VW004230.D
 Acq: 26 Jul 2018 15:44

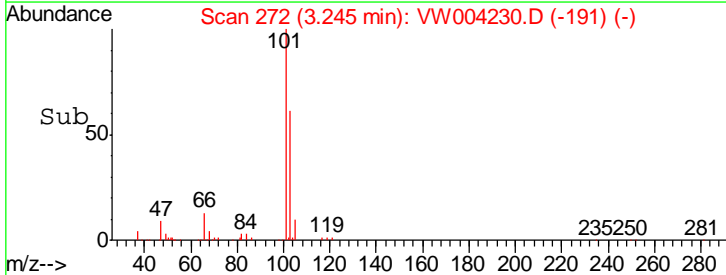
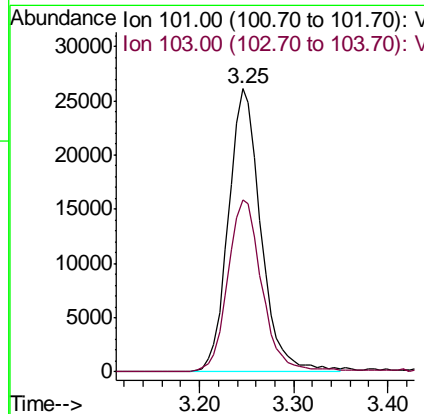
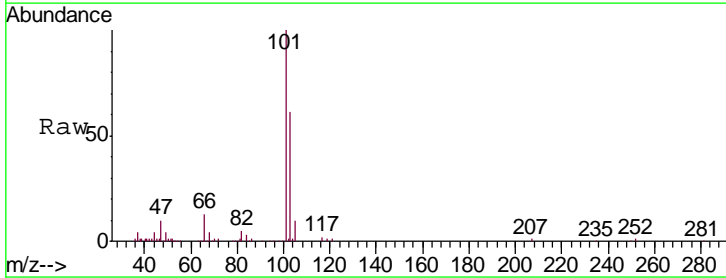
Instrument :
 MSVOA_W
 ClientSampled :

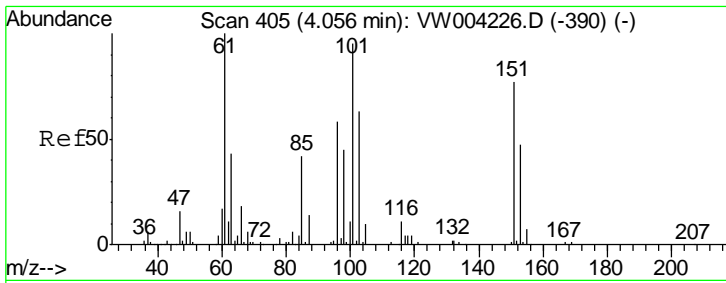
Tgt Ion	Resp	Lower	Upper
64	72555		
66	31.6	21.6	40.2



#9
 Trichlorofluoromethane
 Concen: 24.633 ug/L
 RT: 3.25 min Scan# 272
 Delta R.T. -0.01 min
 Lab File: VW004230.D
 Acq: 26 Jul 2018 15:44

Tgt Ion	Resp	Lower	Upper
101	62662		
103	62.9	44.6	82.8

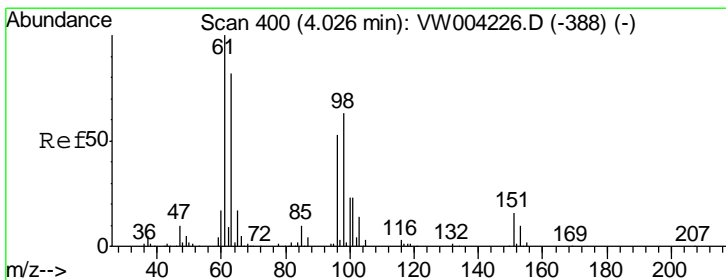
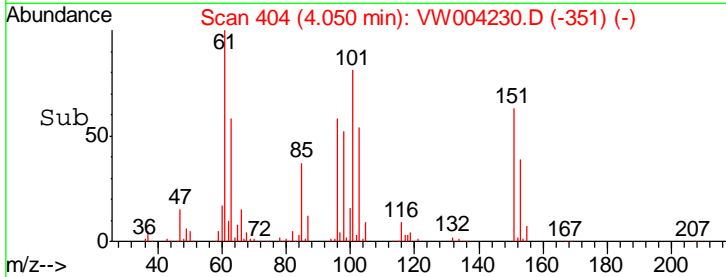
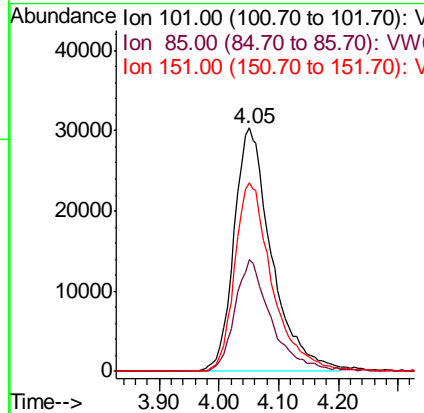
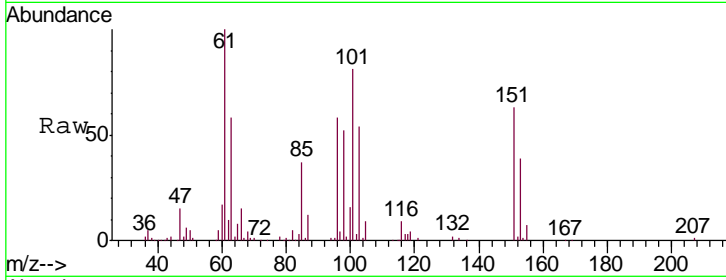




#11
 1,1,2-Trichloro-1,2,2-trifluoroethane
 Concen: 26.598 ug/L
 RT: 4.05 min Scan# 404
 Delta R.T. -0.01 min
 Lab File: VW004230.D
 Acq: 26 Jul 2018 15:44

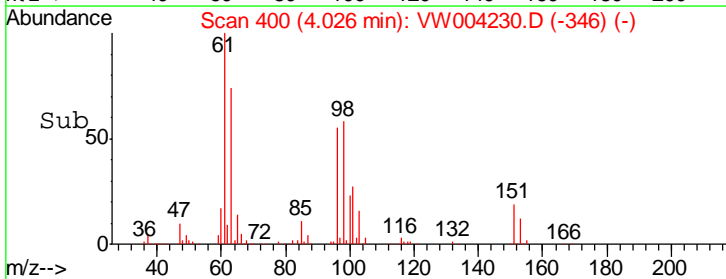
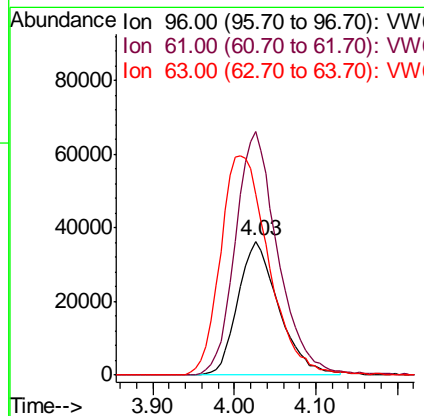
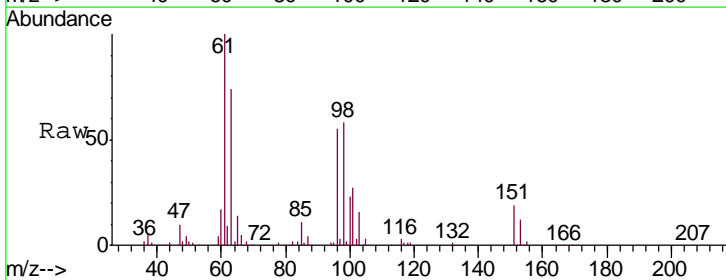
Instrument :
 MSVOA_W
 ClientSampled :

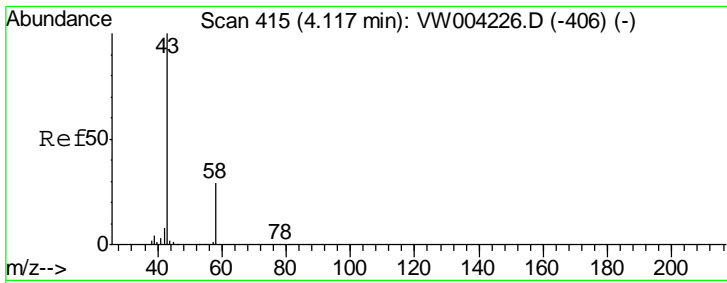
Tgt Ion	Resp	Lower	Upper
101	133310		
85	42.9	35.8	53.8
151	76.5	63.4	95.2



#12
 1,1-Dichloroethene
 Concen: 26.015 ug/L
 RT: 4.03 min Scan# 400
 Delta R.T. 0.00 min
 Lab File: VW004230.D
 Acq: 26 Jul 2018 15:44

Tgt Ion	Resp	Lower	Upper
96	126208		
61	181.8	133.1	247.3
63	135.1	111.7	207.5

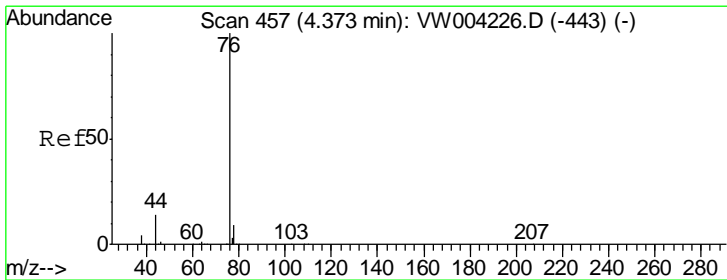
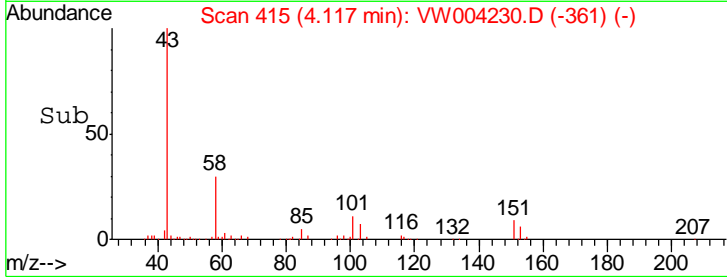
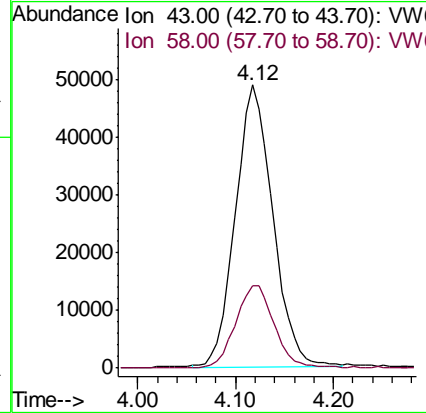
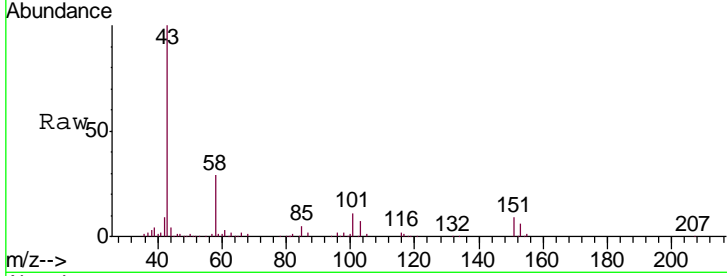




#13
 Acetone
 Concen: 53.820 ug/L
 RT: 4.12 min Scan# 415
 Delta R.T. 0.00 min
 Lab File: VW004230.D
 Acq: 26 Jul 2018 15:44

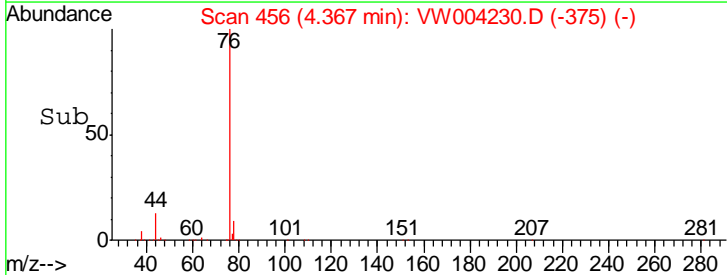
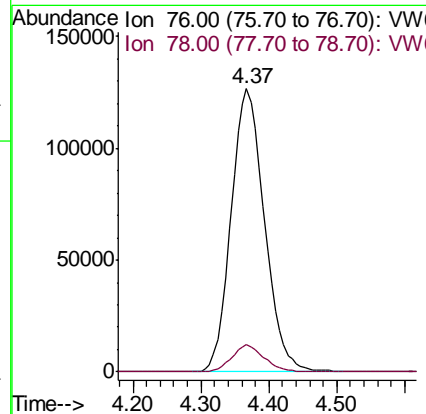
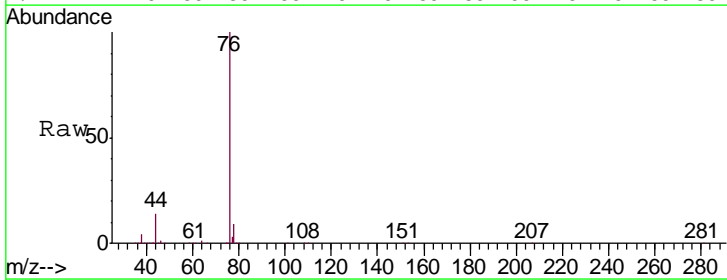
Instrument :
 MSVOA_W
 ClientSampled :

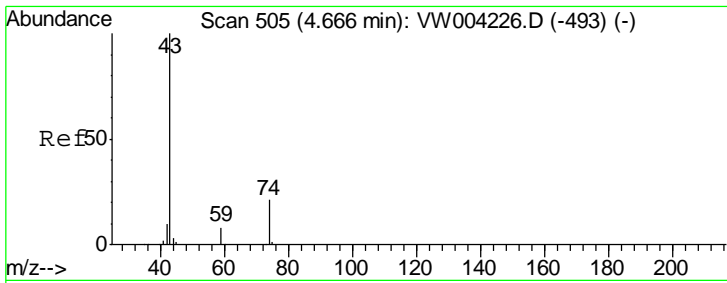
Tgt Ion	Resp	Lower	Upper
43	129925		
58	29.9	0.0	59.8



#14
 Carbon disulfide
 Concen: 27.594 ug/L
 RT: 4.37 min Scan# 456
 Delta R.T. -0.01 min
 Lab File: VW004230.D
 Acq: 26 Jul 2018 15:44

Tgt Ion	Resp	Lower	Upper
76	431003		
78	9.5	7.0	10.6

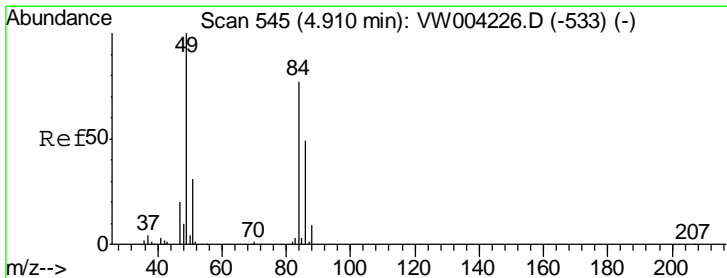
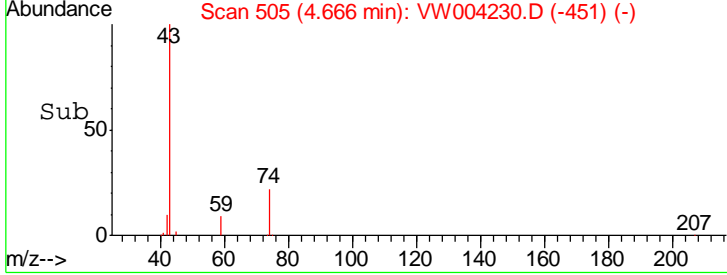
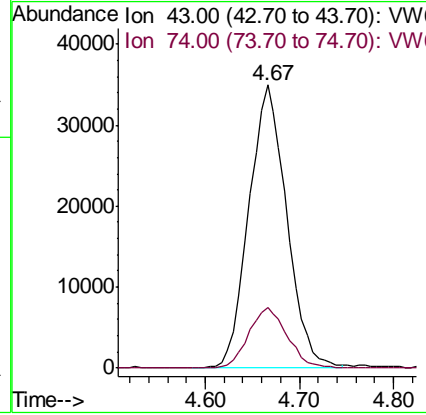
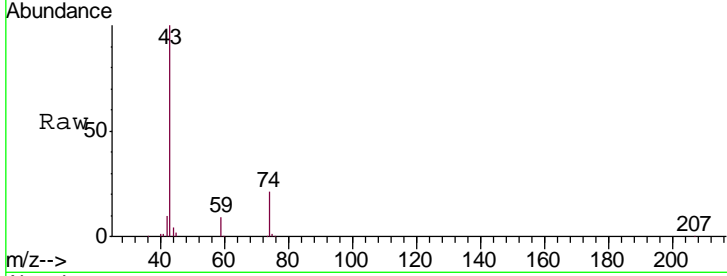




#15
Methyl Acetate
Concen: 24.416 ug/L
RT: 4.67 min Scan# 505
Delta R.T. 0.00 min
Lab File: VW004230.D
Acq: 26 Jul 2018 15:44

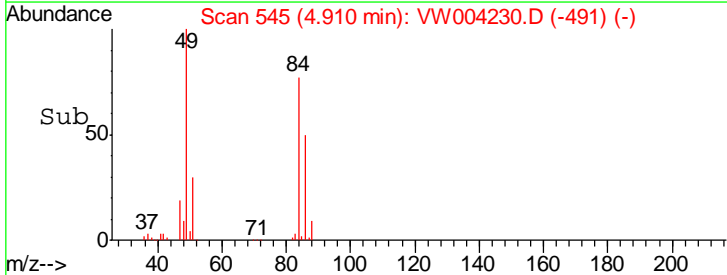
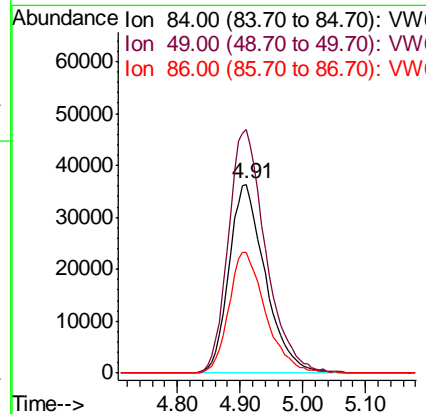
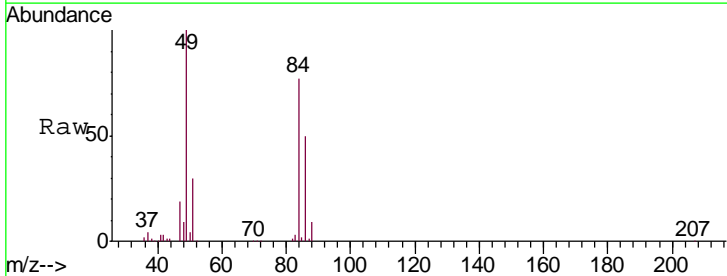
Instrument :
MSVOA_W
ClientSampled :

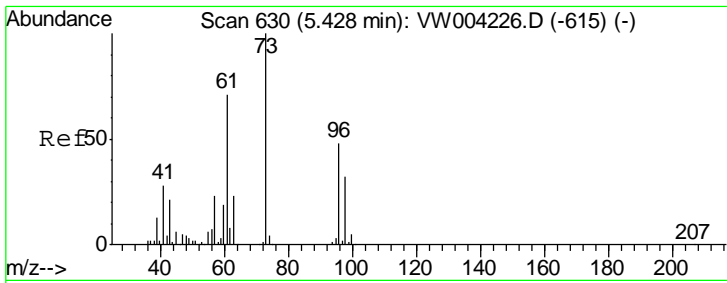
Tgt Ion: 43 Resp: 98046
Ion Ratio Lower Upper
43 100
74 21.8 17.0 25.6



#16
Methylene chloride
Concen: 24.805 ug/L
RT: 4.91 min Scan# 545
Delta R.T. 0.00 min
Lab File: VW004230.D
Acq: 26 Jul 2018 15:44

Tgt Ion: 84 Resp: 145891
Ion Ratio Lower Upper
84 100
49 129.1 90.9 168.7
86 64.3 44.4 82.5

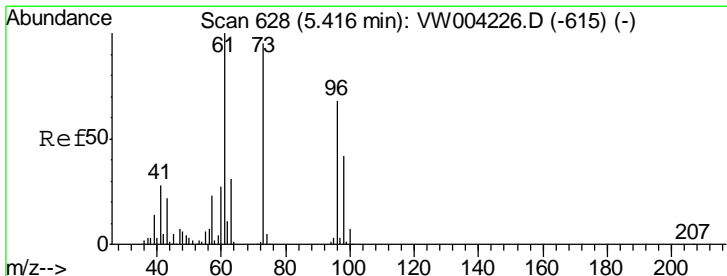
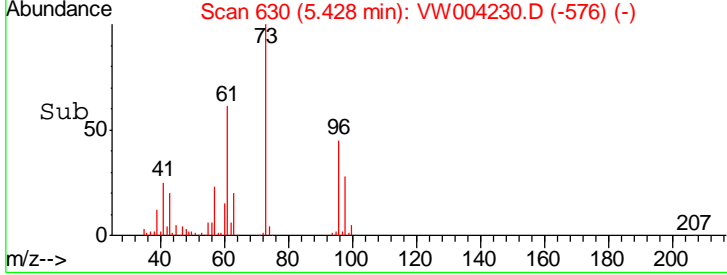
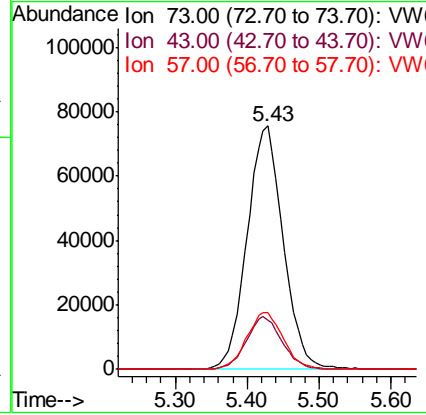
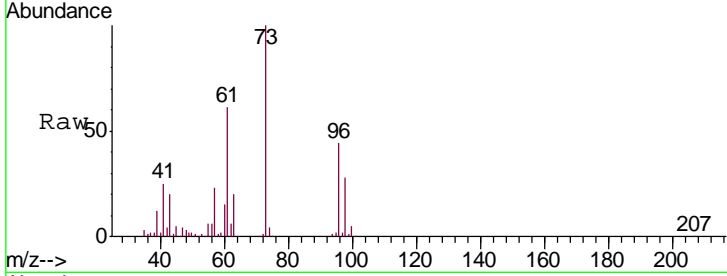




#17
 Methyl tert-butyl Ether
 Concen: 27.276 ug/L
 RT: 5.43 min Scan# 630
 Delta R.T. 0.00 min
 Lab File: VW004230.D
 Acq: 26 Jul 2018 15:44

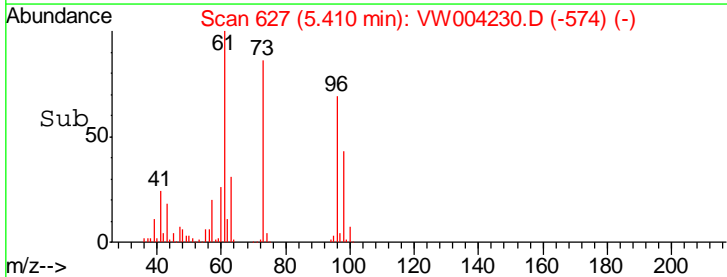
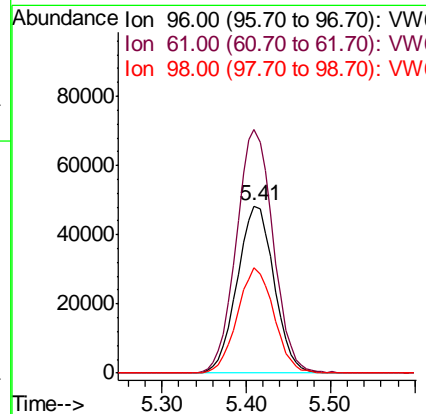
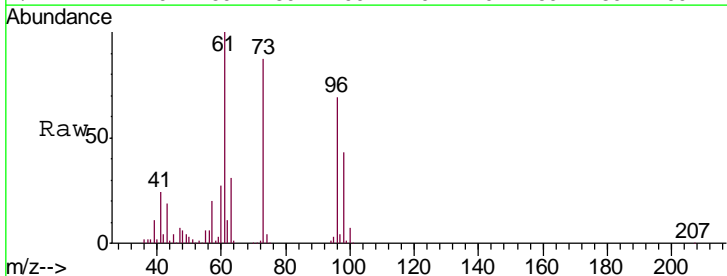
Instrument :
 MSVOA_W
 ClientSampled :

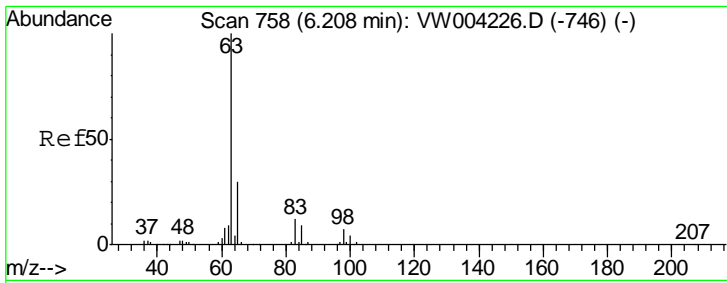
Tgt Ion	Resp	Lower	Upper
73	100		
43	21.2	17.8	26.6
57	23.6	18.7	28.1



#18
 trans-1,2-Dichloroethene
 Concen: 27.968 ug/L
 RT: 5.41 min Scan# 627
 Delta R.T. -0.01 min
 Lab File: VW004230.D
 Acq: 26 Jul 2018 15:44

Tgt Ion	Resp	Lower	Upper
96	100		
61	145.7	102.4	190.2
98	62.8	43.1	80.1

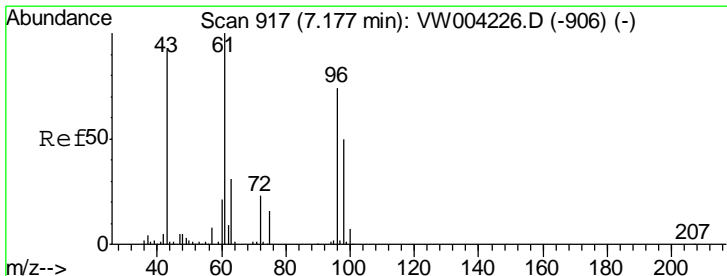
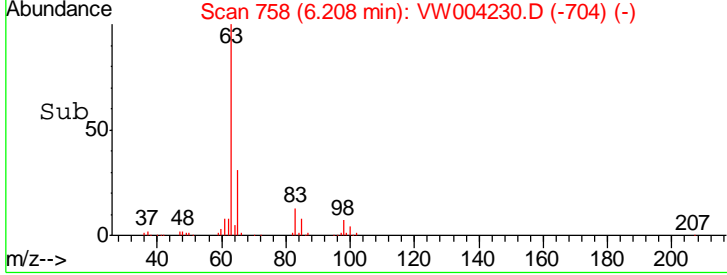
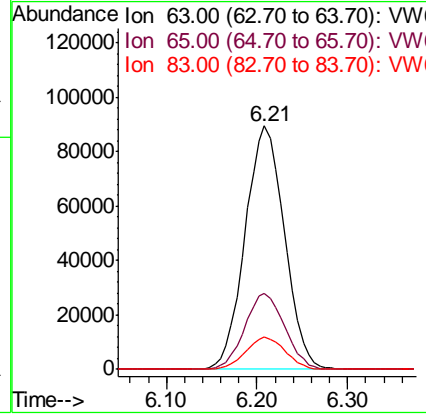
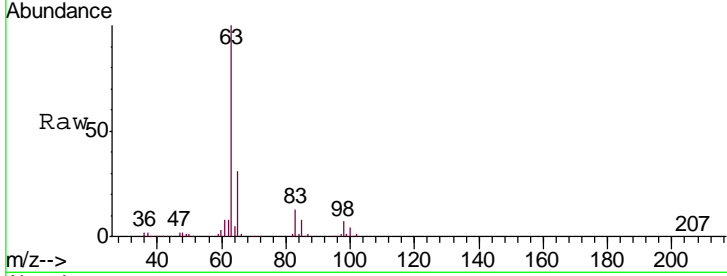




#19
 1,1-Dichloroethane
 Concen: 27.017 ug/L
 RT: 6.21 min Scan# 758
 Delta R.T. 0.00 min
 Lab File: VW004230.D
 Acq: 26 Jul 2018 15:44

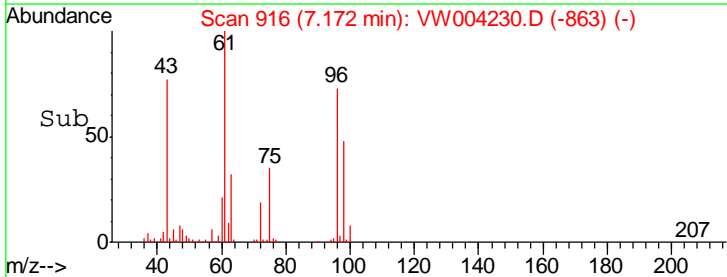
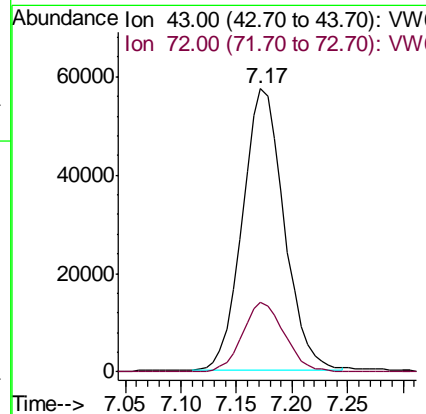
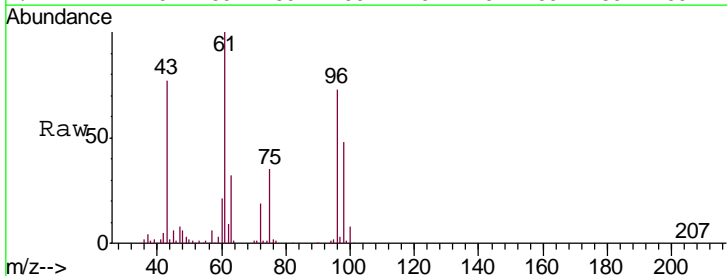
Instrument : MSVOA_W
 ClientSampled :

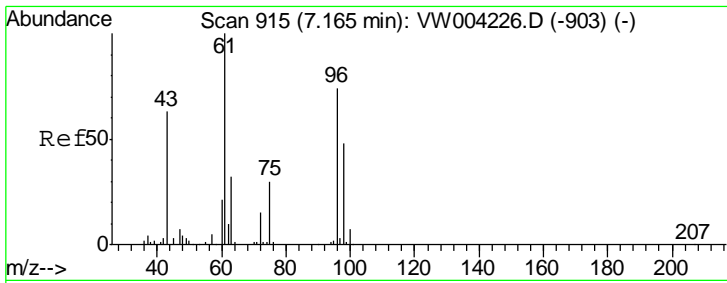
Tgt Ion	Resp	Lower	Upper
63	100		
65	30.9	21.3	39.6
83	13.4	8.6	16.0



#21
 2-Butanone
 Concen: 49.166 ug/L
 RT: 7.17 min Scan# 916
 Delta R.T. -0.01 min
 Lab File: VW004230.D
 Acq: 26 Jul 2018 15:44

Tgt Ion	Resp	Lower	Upper
43	100		
72	24.9	12.3	36.9

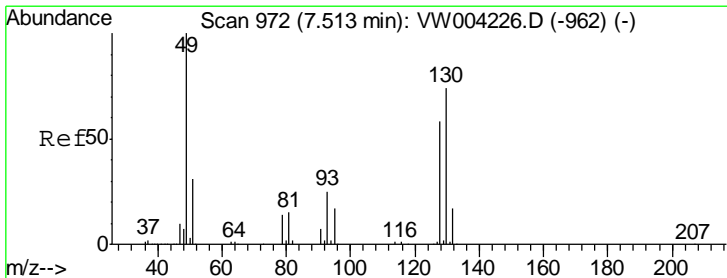
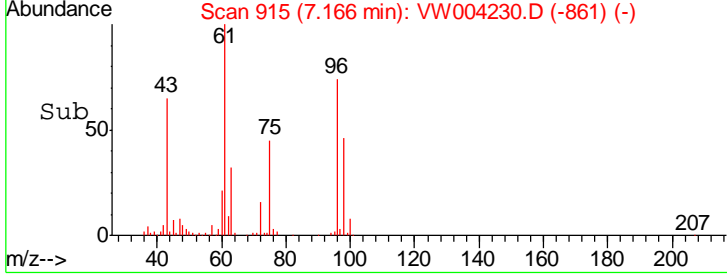
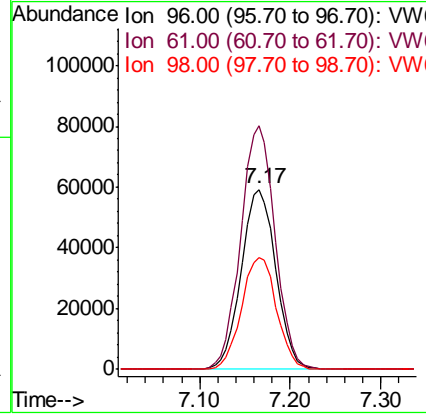
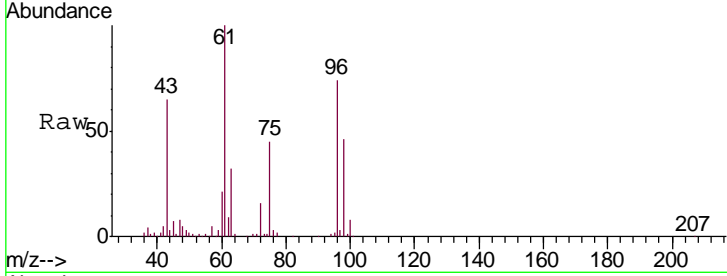




#22
 cis-1,2-Dichloroethene
 Concen: 27.534 ug/L
 RT: 7.17 min Scan# 915
 Delta R.T. 0.00 min
 Lab File: VW004230.D
 Acq: 26 Jul 2018 15:44

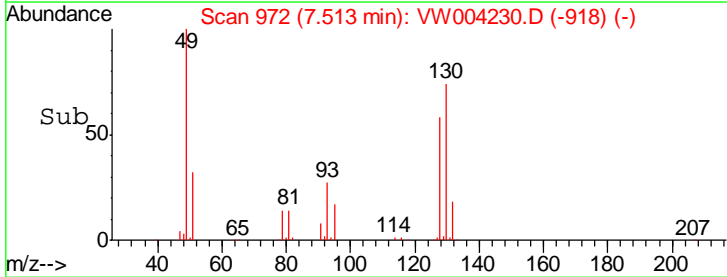
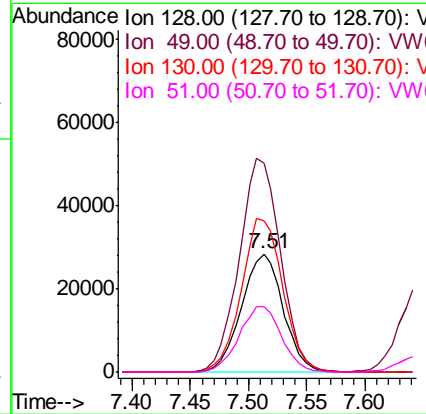
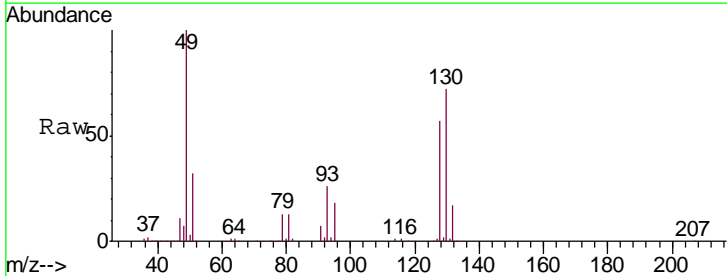
Instrument :
 MSVOA_W
 ClientSampled :

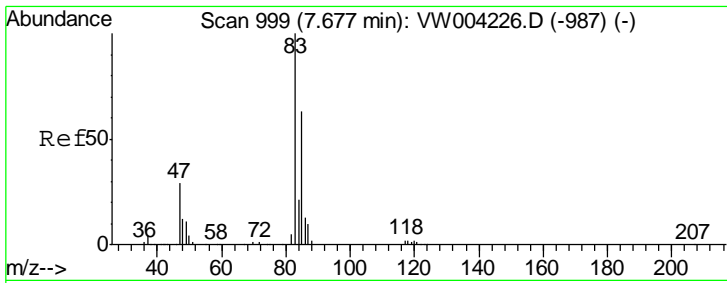
Tgt Ion	Resp	Lower	Upper
96	156400		
61	135.3	95.1	176.7
98	62.1	45.2	84.0



#23
 Bromochloromethane
 Concen: 26.233 ug/L
 RT: 7.51 min Scan# 972
 Delta R.T. 0.00 min
 Lab File: VW004230.D
 Acq: 26 Jul 2018 15:44

Tgt Ion	Resp	Lower	Upper
128	70542		
49	176.8	120.5	223.7
130	127.4	88.5	164.4
51	55.7	42.8	64.2

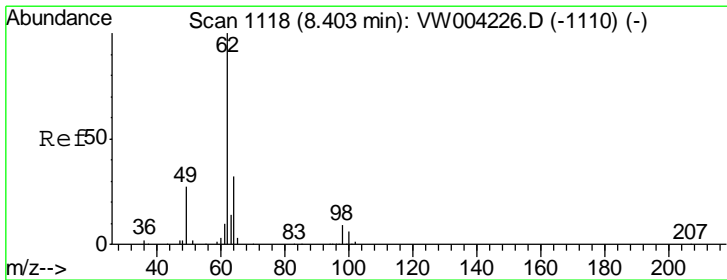
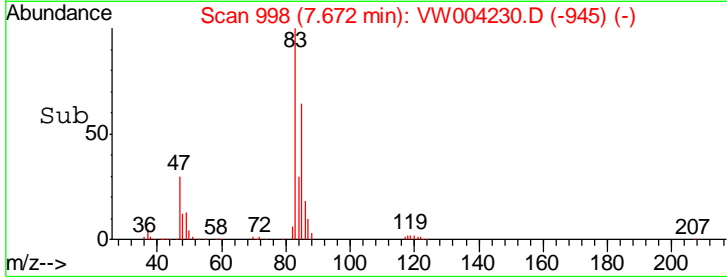
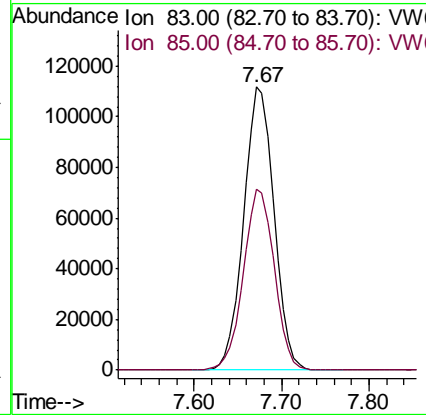
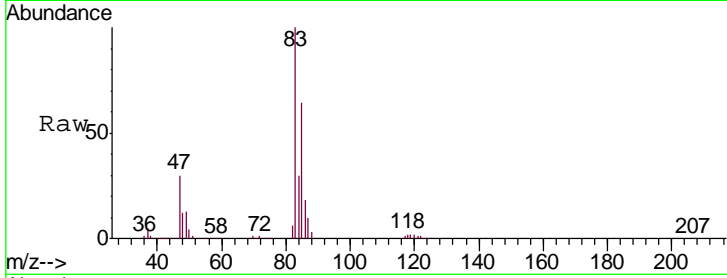




#25
 Chloroform
 Concen: 26.406 ug/L
 RT: 7.67 min Scan# 998
 Delta R.T. -0.01 min
 Lab File: VW004230.D
 Acq: 26 Jul 2018 15:44

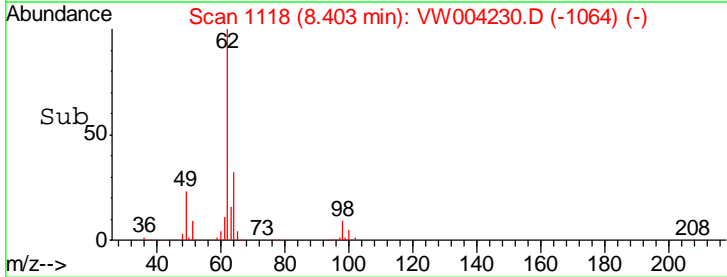
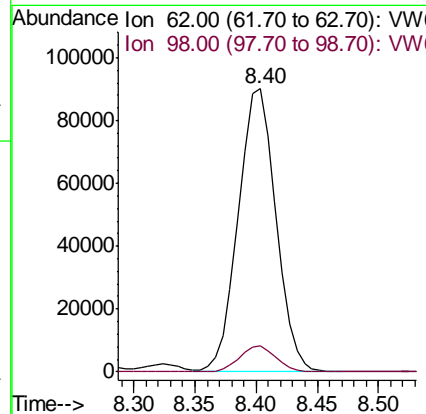
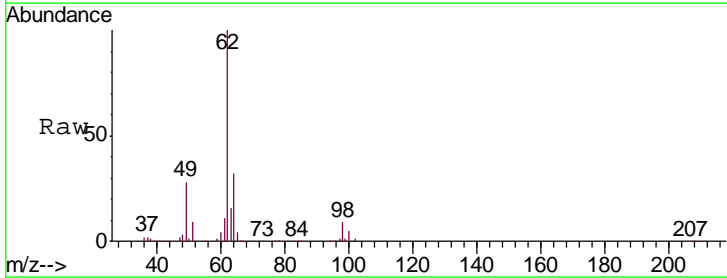
Instrument :
 MSVOA_W
 ClientSampled :

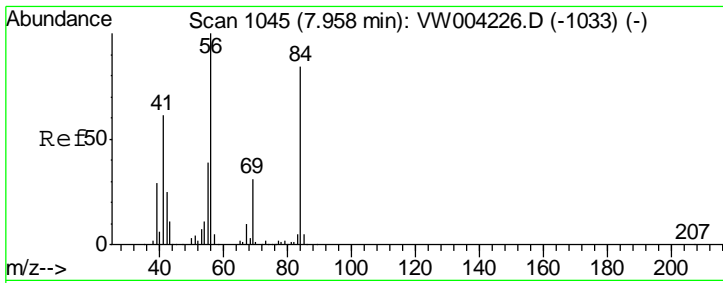
Tgt Ion: 83 Resp: 269493
 Ion Ratio Lower Upper
 83 100
 85 65.0 45.5 84.5



#27
 1,2-Dichloroethane
 Concen: 25.755 ug/L
 RT: 8.40 min Scan# 1118
 Delta R.T. 0.00 min
 Lab File: VW004230.D
 Acq: 26 Jul 2018 15:44

Tgt Ion: 62 Resp: 193338
 Ion Ratio Lower Upper
 62 100
 98 9.3 7.0 10.4

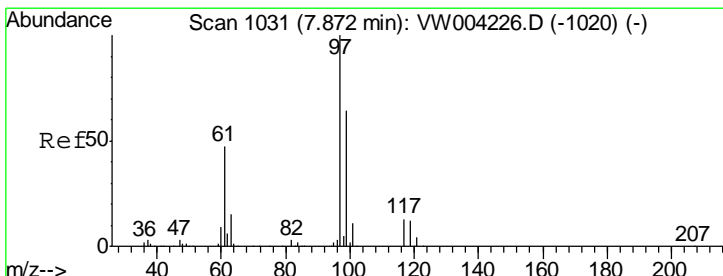
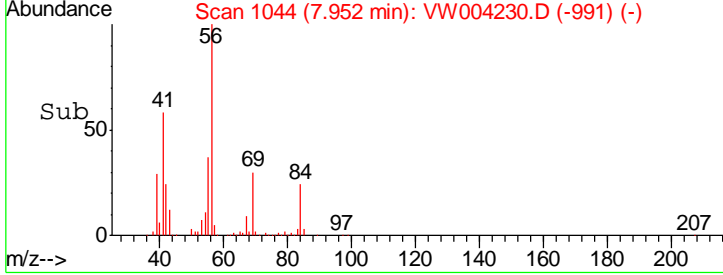
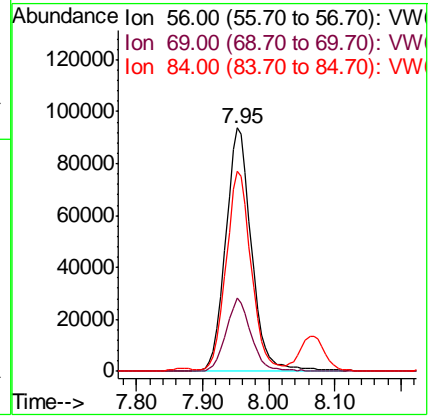
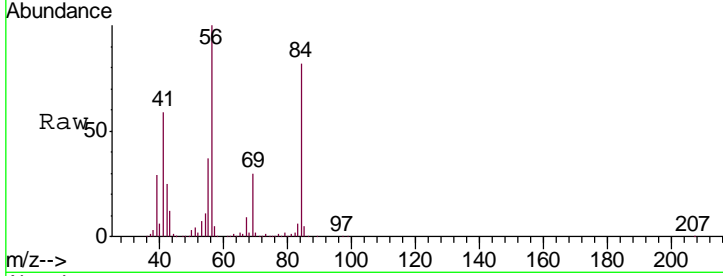




#30
 Cyclohexane
 Concen: 30.259 ug/L
 RT: 7.95 min Scan# 1044
 Delta R.T. -0.01 min
 Lab File: VW004230.D
 Acq: 26 Jul 2018 15:44

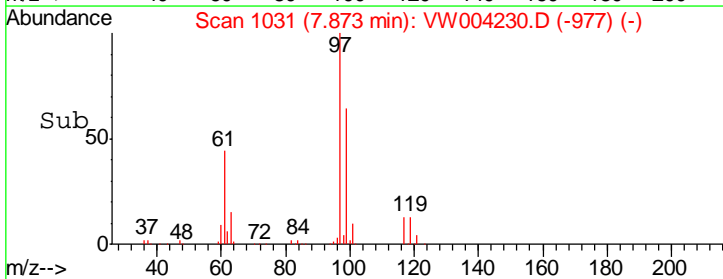
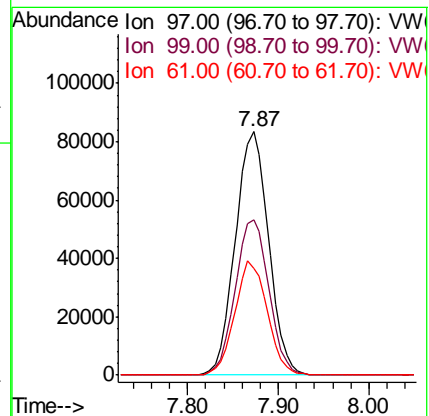
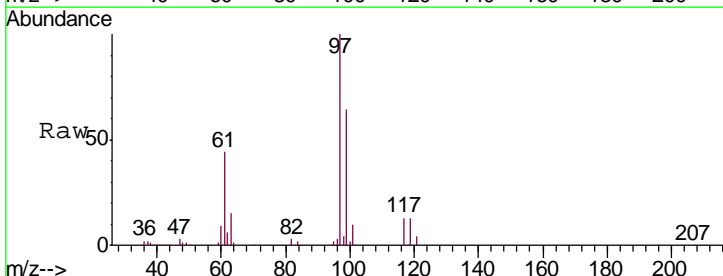
Instrument :
 MSVOA_W
 ClientSampled :

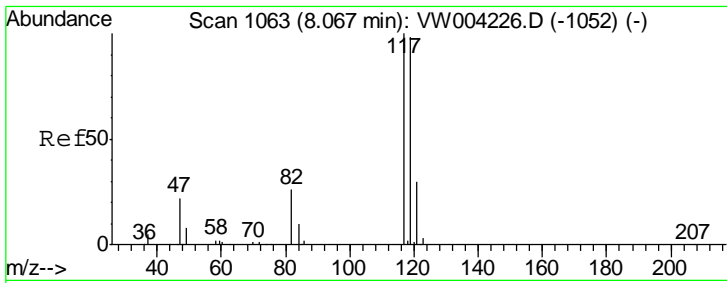
Tgt Ion	Resp	Lower	Upper
56	100		
69	28.8	23.2	34.8
84	80.3	64.0	96.0



#31
 1,1,1-Trichloroethane
 Concen: 27.793 ug/L
 RT: 7.87 min Scan# 1031
 Delta R.T. 0.00 min
 Lab File: VW004230.D
 Acq: 26 Jul 2018 15:44

Tgt Ion	Resp	Lower	Upper
97	100		
99	64.4	51.3	76.9
61	45.8	37.1	55.7

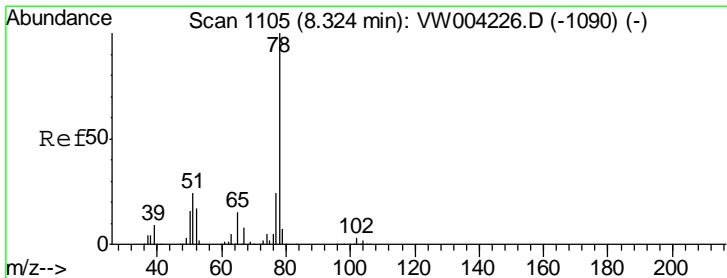
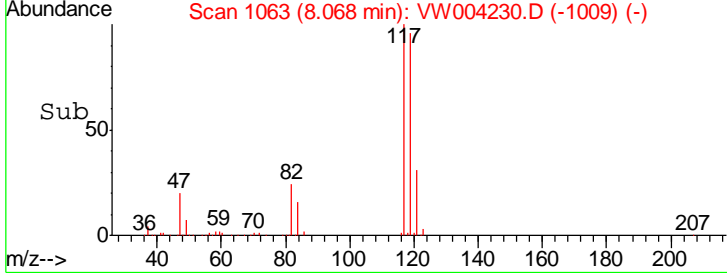
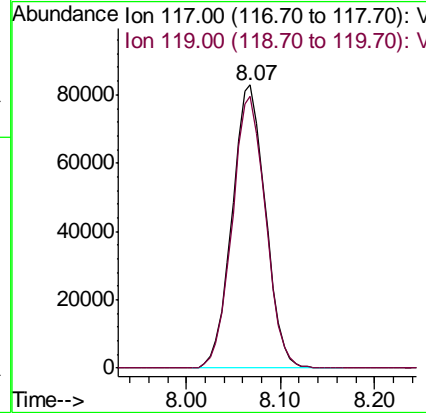
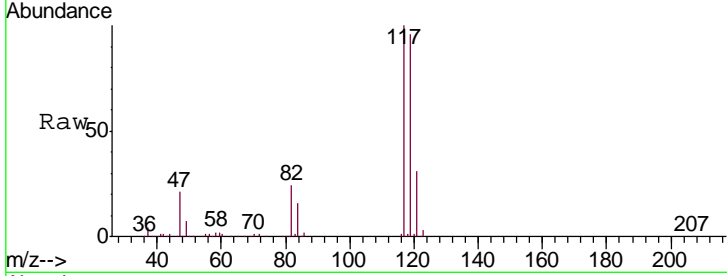




#32
 Carbon tetrachloride
 Concen: 27.435 ug/L
 RT: 8.07 min Scan# 1063
 Delta R.T. 0.00 min
 Lab File: VW004230.D
 Acq: 26 Jul 2018 15:44

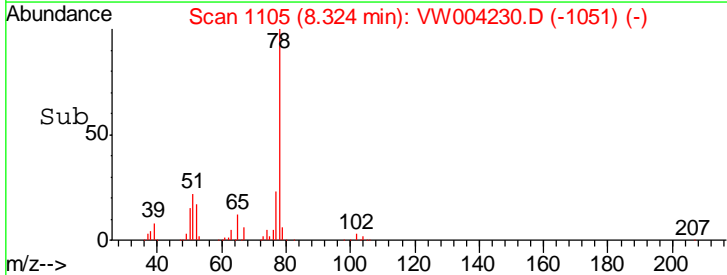
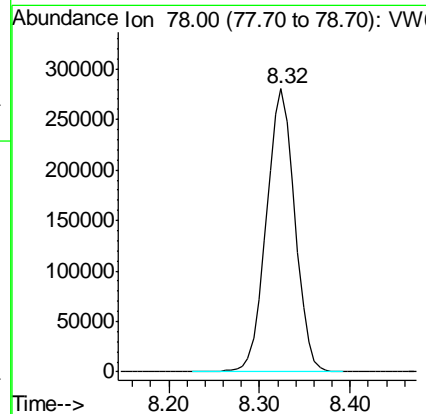
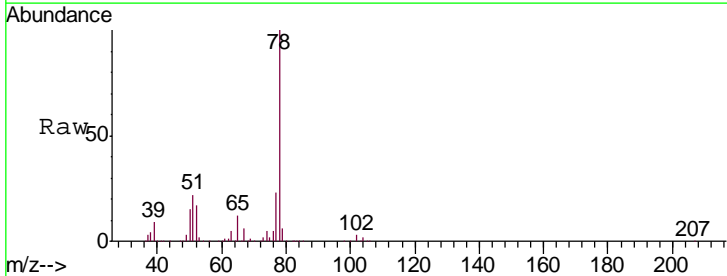
Instrument :
 MSVOA_W
 ClientSampled :

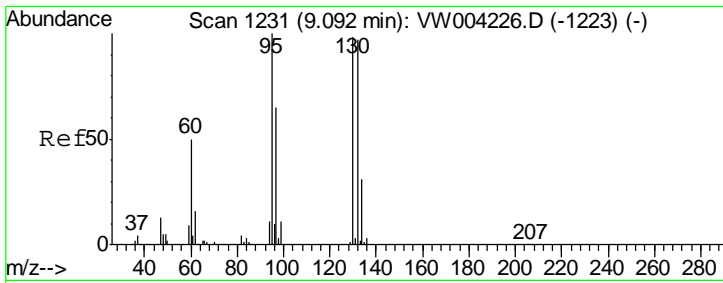
Tgt Ion: 117 Resp: 203930
 Ion Ratio Lower Upper
 117 100
 119 96.2 76.9 115.3



#34
 Benzene
 Concen: 27.957 ug/L
 RT: 8.32 min Scan# 1105
 Delta R.T. 0.00 min
 Lab File: VW004230.D
 Acq: 26 Jul 2018 15:44

Tgt Ion: 78 Resp: 608676

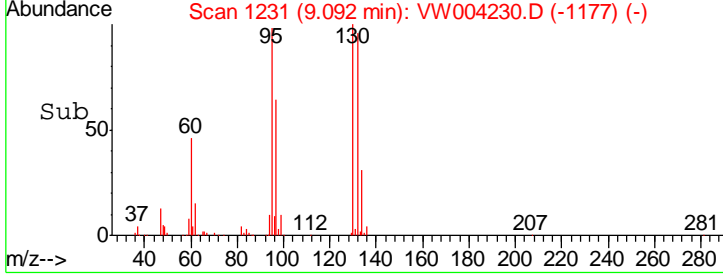
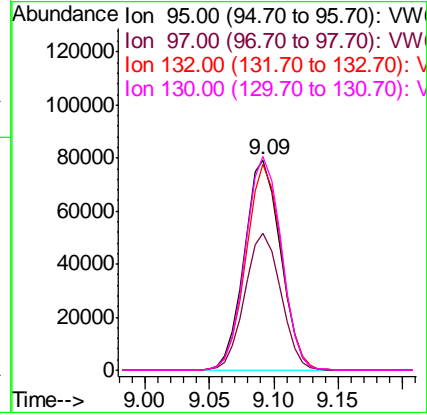
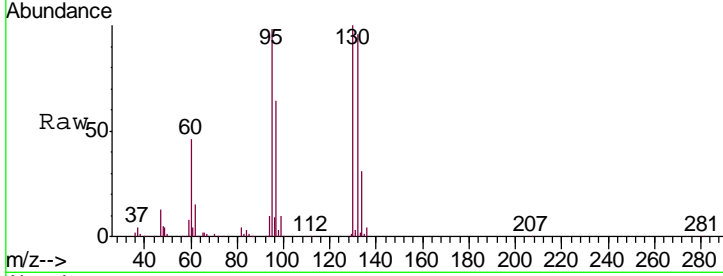




#35
 Trichloroethene
 Concen: 26.980 ug/L
 RT: 9.09 min Scan# 1231
 Delta R.T. 0.00 min
 Lab File: VW004230.D
 Acq: 26 Jul 2018 15:44

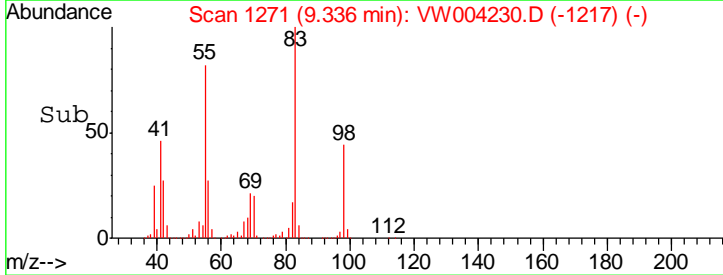
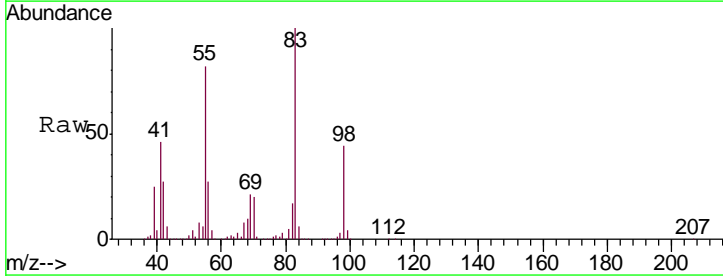
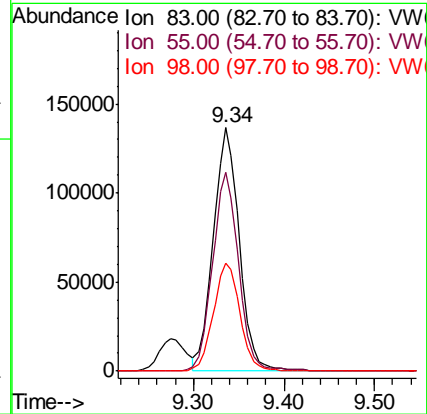
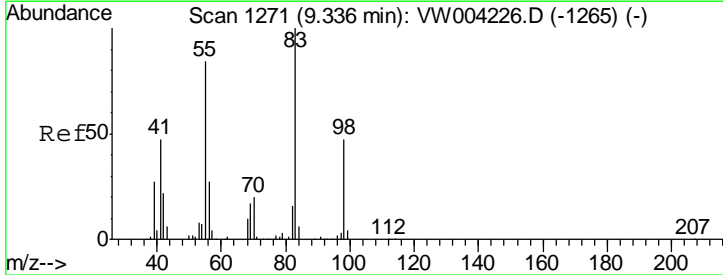
Instrument :
 MSVOA_W
 ClientSampled :

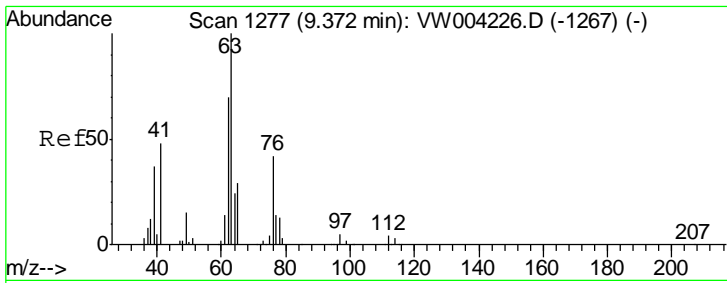
Tgt Ion	Resp	Lower	Upper
95	100		
97	64.7	44.9	83.5
132	96.0	67.4	125.2
130	100.6	70.2	130.4



#36
 Methylcyclohexane
 Concen: 28.721 ug/L
 RT: 9.34 min Scan# 1271
 Delta R.T. 0.00 min
 Lab File: VW004230.D
 Acq: 26 Jul 2018 15:44

Tgt Ion	Resp	Lower	Upper
83	100		
55	82.0	65.5	98.3
98	45.3	37.1	55.7

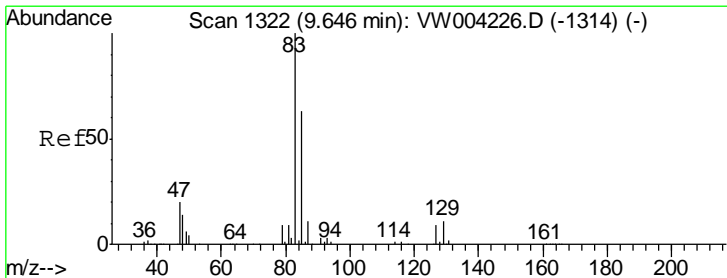
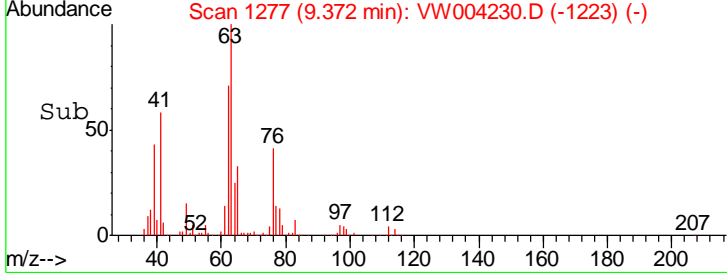
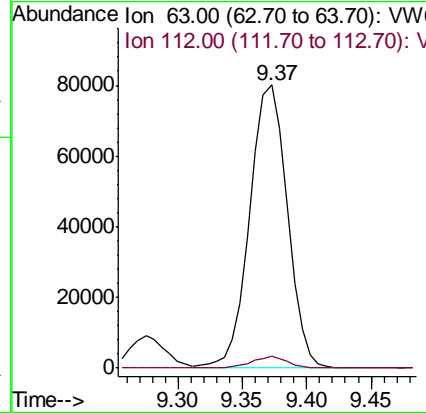
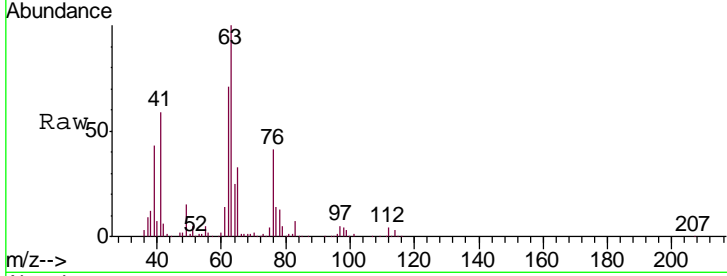




#40
 1,2-Dichloropropane
 Concen: 27.478 ug/L
 RT: 9.37 min Scan# 1277
 Delta R.T. 0.00 min
 Lab File: VW004230.D
 Acq: 26 Jul 2018 15:44

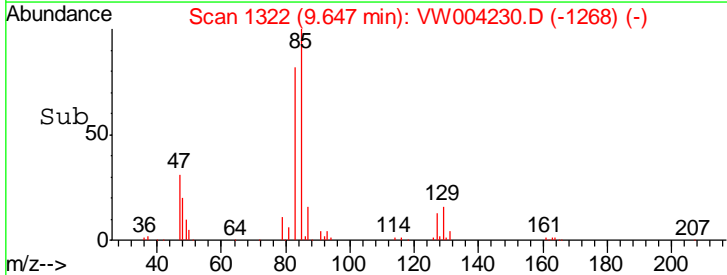
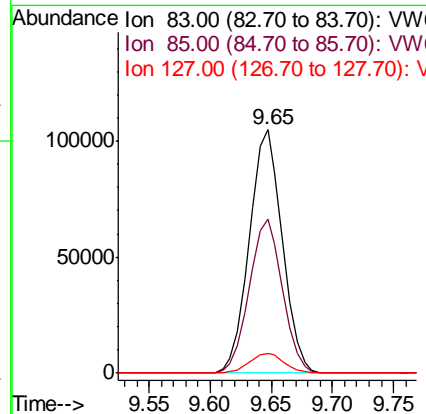
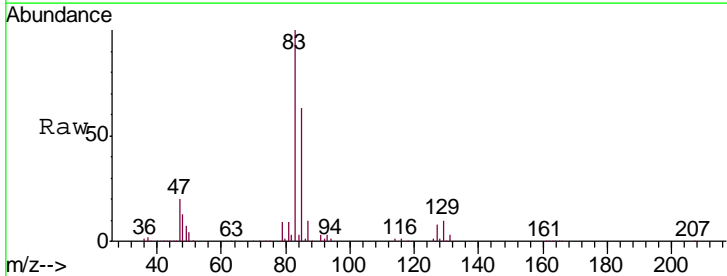
Instrument :
 MSVOA_W
 ClientSampled :

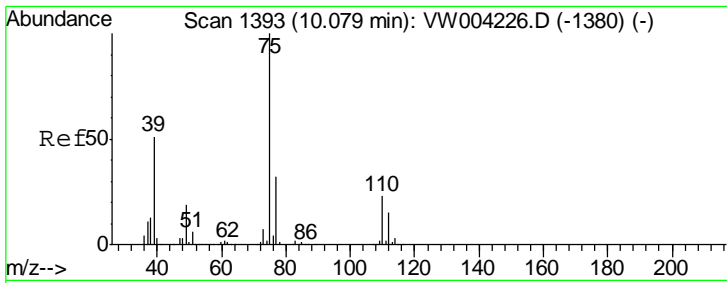
Tgt Ion	Resp	Lower	Upper
63	162430		
112	4.0	3.2	4.8



#41
 Bromodichloromethane
 Concen: 26.860 ug/L
 RT: 9.65 min Scan# 1322
 Delta R.T. 0.00 min
 Lab File: VW004230.D
 Acq: 26 Jul 2018 15:44

Tgt Ion	Resp	Lower	Upper
83	196064		
85	63.3	44.0	81.8
127	8.2	7.2	10.8

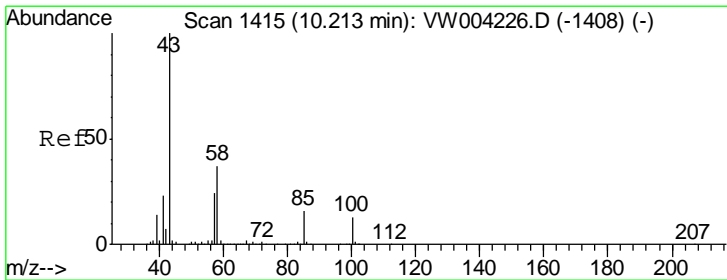
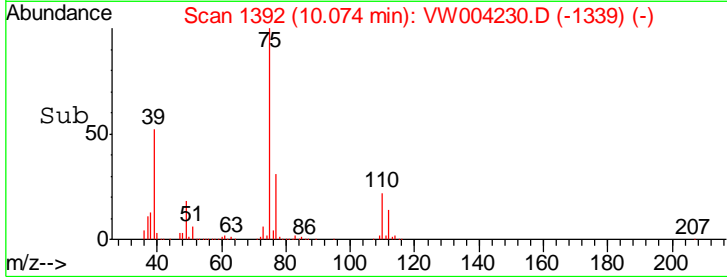
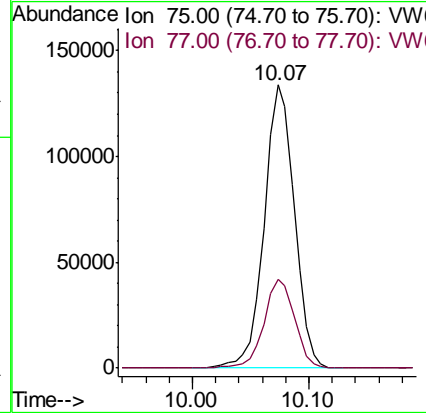
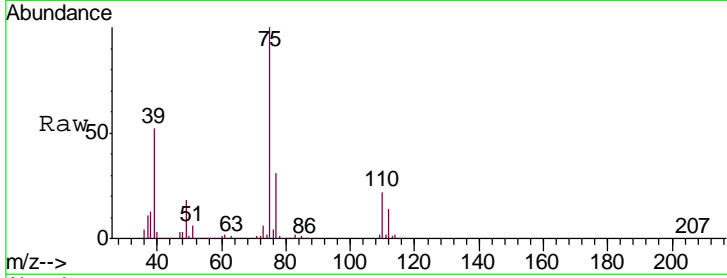




#42
 cis-1,3-Dichloropropene
 Concen: 27.883 ug/L
 RT: 10.07 min Scan# 1392
 Delta R.T. -0.01 min
 Lab File: VW004230.D
 Acq: 26 Jul 2018 15:44

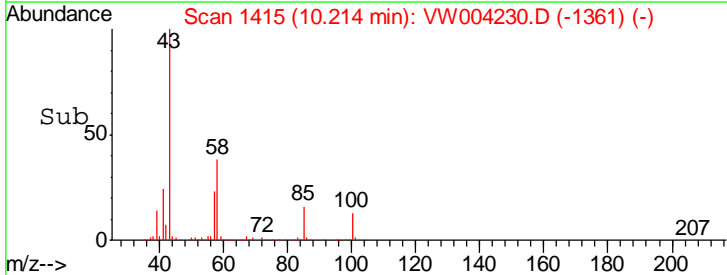
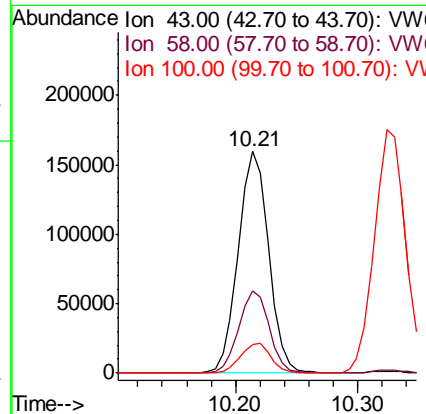
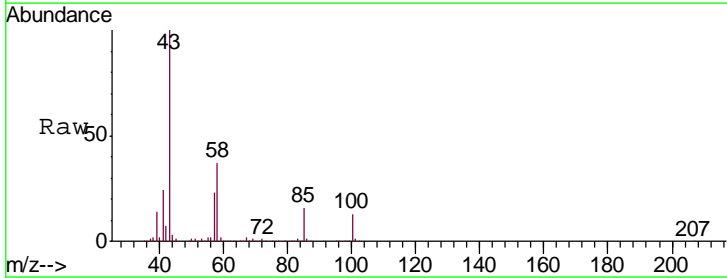
Instrument :
 MSVOA_W
 ClientSampled :

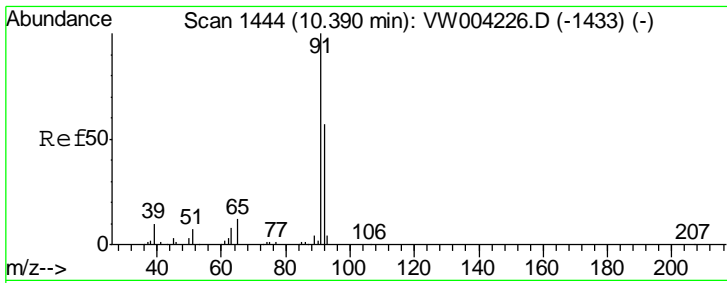
Tgt Ion: 75 Resp: 239758
 Ion Ratio Lower Upper
 75 100
 77 31.4 22.6 42.0



#43
 4-Methyl-2-pentanone
 Concen: 52.261 ug/L
 RT: 10.21 min Scan# 1415
 Delta R.T. 0.00 min
 Lab File: VW004230.D
 Acq: 26 Jul 2018 15:44

Tgt Ion: 43 Resp: 275206
 Ion Ratio Lower Upper
 43 100
 58 37.1 29.4 44.2
 100 13.5 10.6 16.0

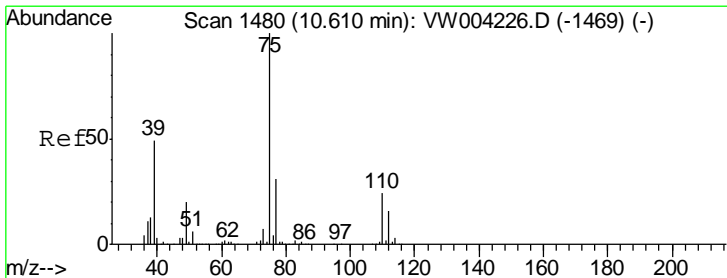
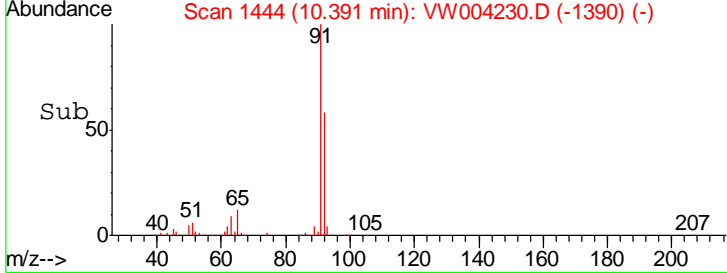
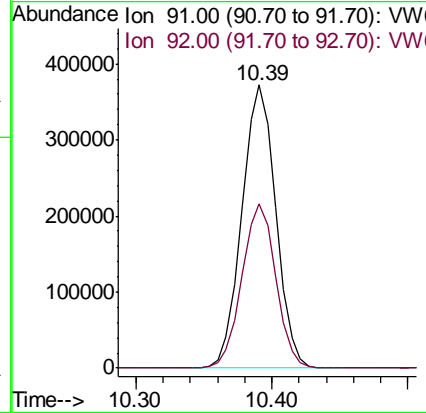
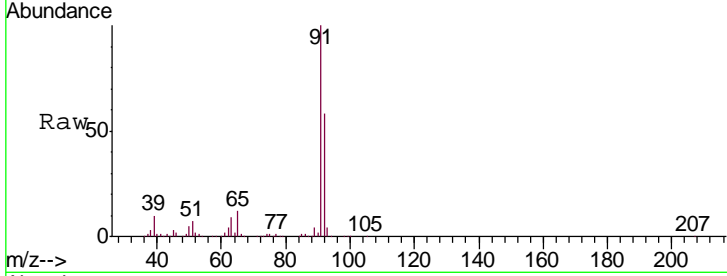




#44
 Toluene
 Concen: 28.126 ug/L
 RT: 10.39 min Scan# 1444
 Delta R.T. 0.00 min
 Lab File: VW004230.D
 Acq: 26 Jul 2018 15:44

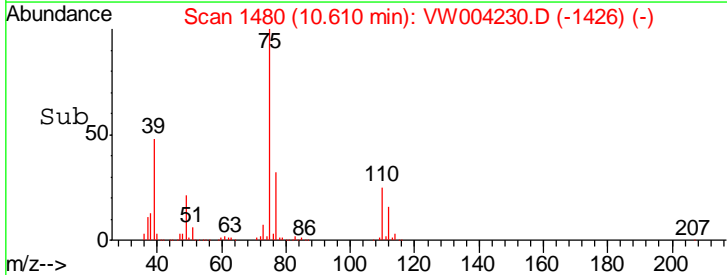
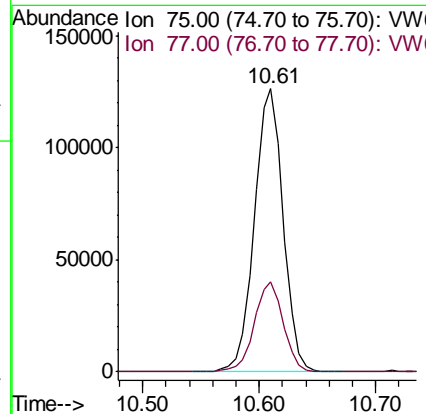
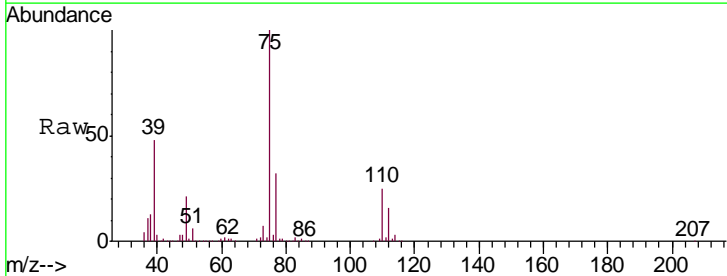
Instrument :
 MSVOA_W
 ClientSampled :

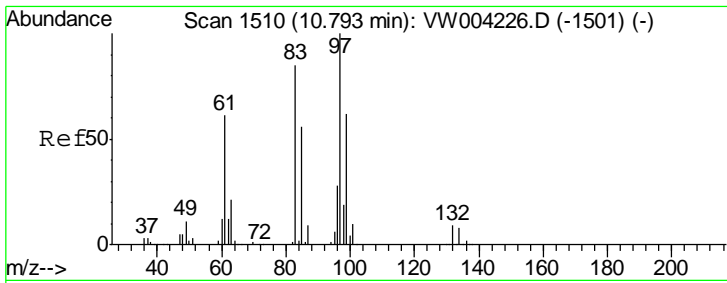
Tgt Ion: 91 Resp: 647188
 Ion Ratio Lower Upper
 91 100
 92 57.9 39.9 74.1



#45
 trans-1,3-Dichloropropene
 Concen: 27.477 ug/L
 RT: 10.61 min Scan# 1480
 Delta R.T. 0.00 min
 Lab File: VW004230.D
 Acq: 26 Jul 2018 15:44

Tgt Ion: 75 Resp: 216666
 Ion Ratio Lower Upper
 75 100
 77 31.6 21.6 40.2

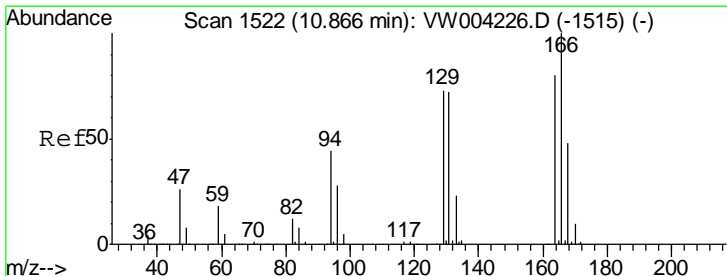
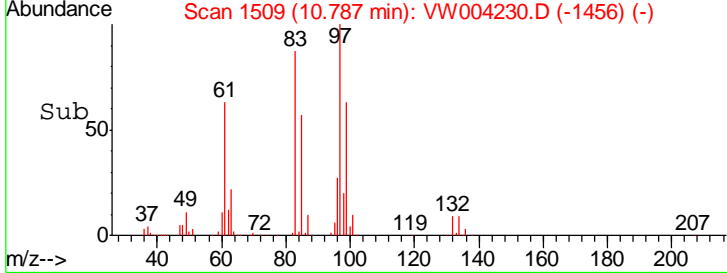
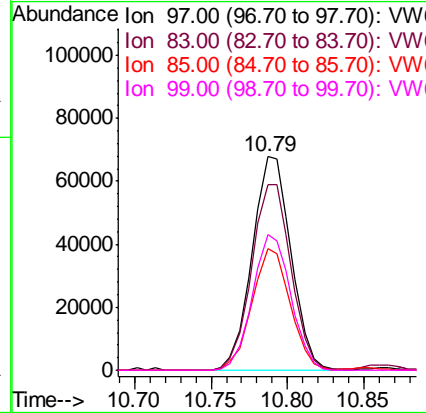
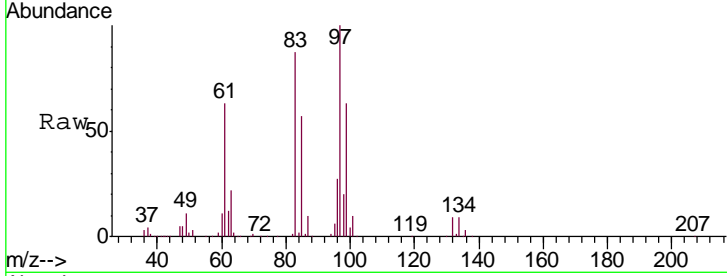




#46
 1,1,2-Trichloroethane
 Concen: 26.191 ug/L
 RT: 10.79 min Scan# 1509
 Delta R.T. -0.01 min
 Lab File: VW004230.D
 Acq: 26 Jul 2018 15:44

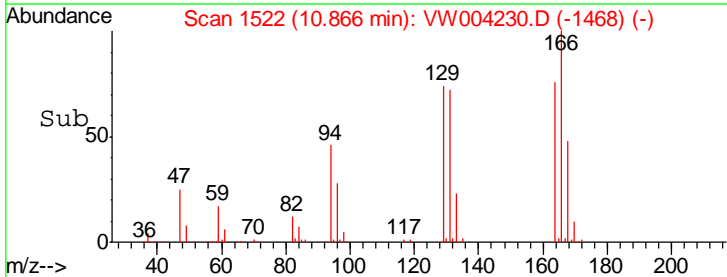
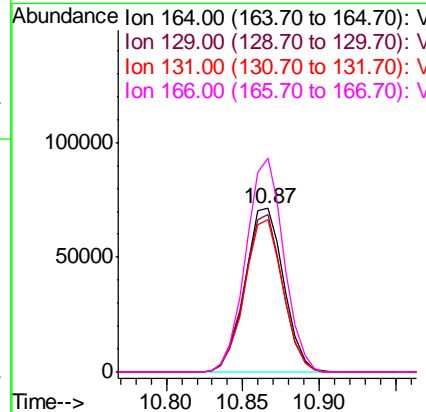
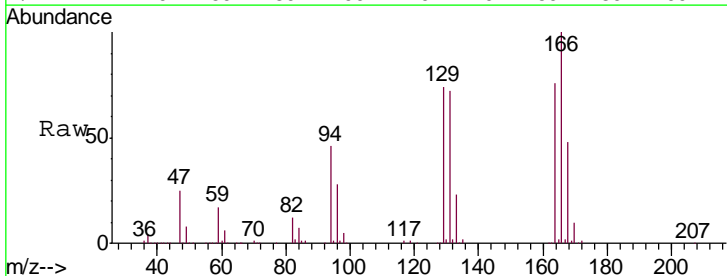
Instrument : MSVOA_W
 ClientSampled :

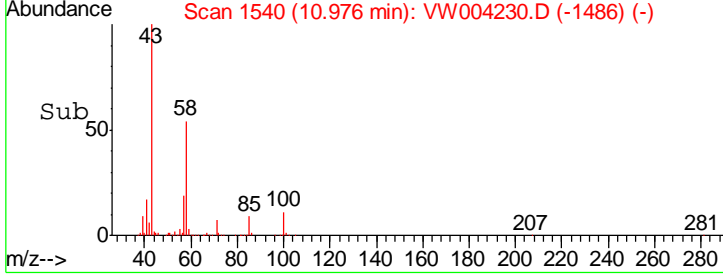
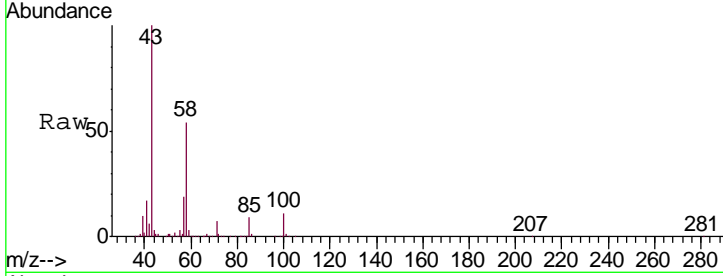
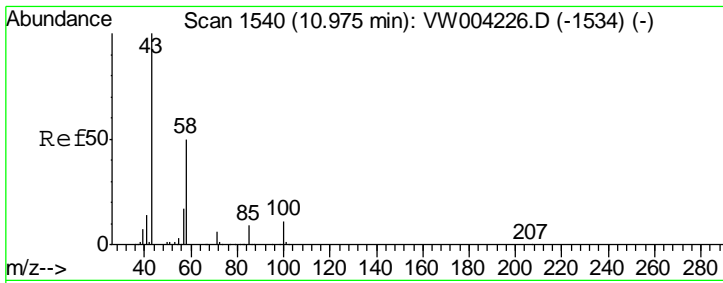
Tgt Ion	Resp	Lower	Upper
97	120206		
83	86.9	59.8	111.0
85	57.0	39.3	73.1
99	63.4	43.3	80.5



#47
 Tetrachloroethene
 Concen: 27.362 ug/L
 RT: 10.87 min Scan# 1522
 Delta R.T. 0.00 min
 Lab File: VW004230.D
 Acq: 26 Jul 2018 15:44

Tgt Ion	Resp	Lower	Upper
164	125360		
129	96.7	63.4	117.8
131	93.6	63.1	117.1
166	130.8	87.5	162.5

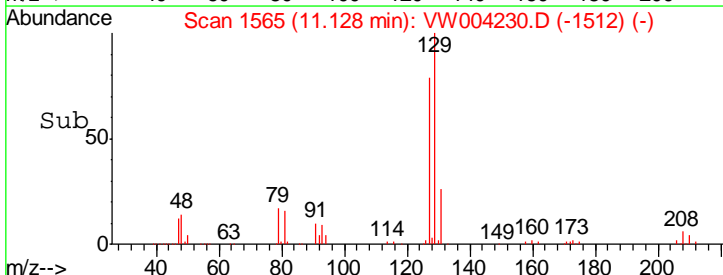
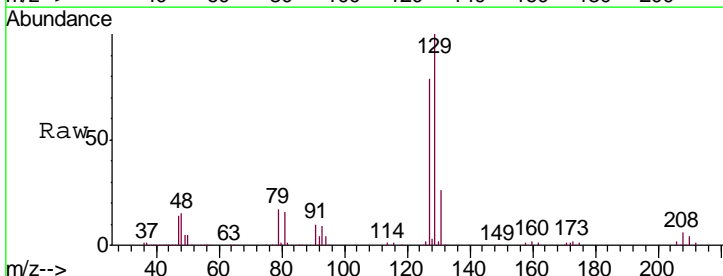
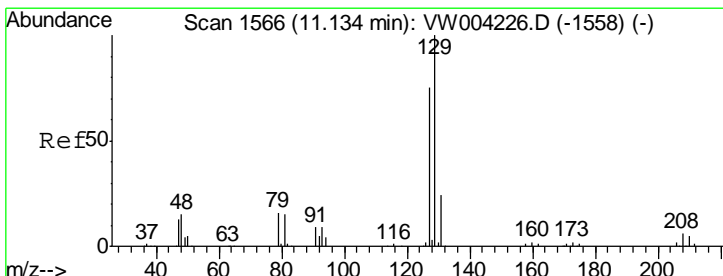
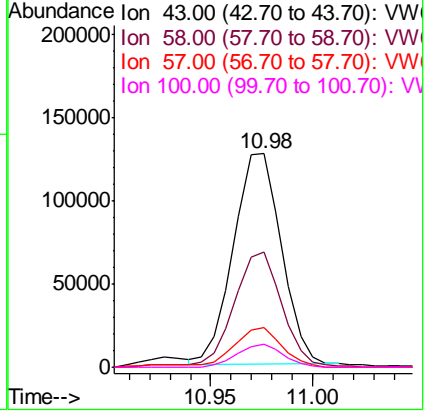




#49
 2-Hexanone
 Concen: 50.340 ug/L
 RT: 10.98 min Scan# 1540
 Delta R.T. 0.00 min
 Lab File: VW004230.D
 Acq: 26 Jul 2018 15:44

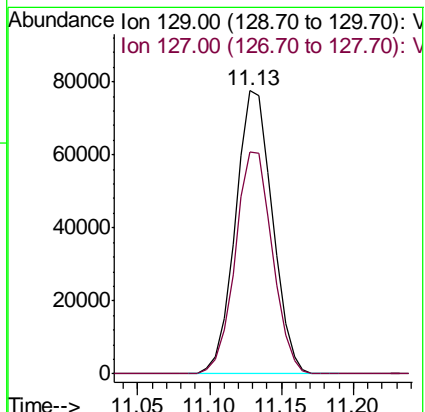
Instrument : MSVOA_W
 ClientSampled :

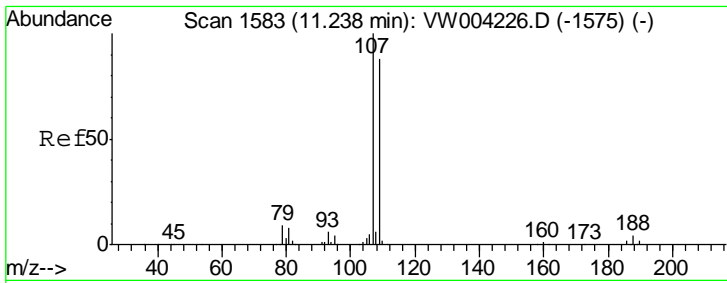
Tgt Ion	Resp	Lower	Upper
43	100		
58	55.4	39.8	59.8
57	18.4	13.9	20.9
100	10.7	8.0	12.0



#50
 Dibromochloromethane
 Concen: 26.411 ug/L
 RT: 11.13 min Scan# 1565
 Delta R.T. -0.01 min
 Lab File: VW004230.D
 Acq: 26 Jul 2018 15:44

Tgt Ion	Resp	Lower	Upper
129	100		
127	78.5	52.7	97.9

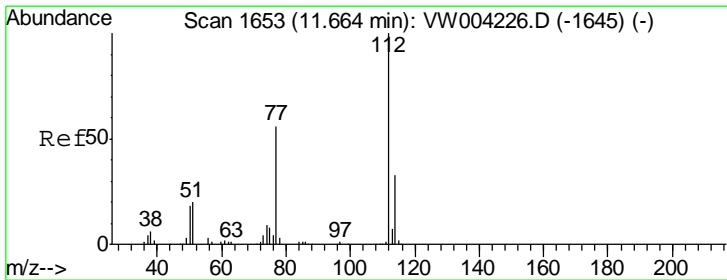
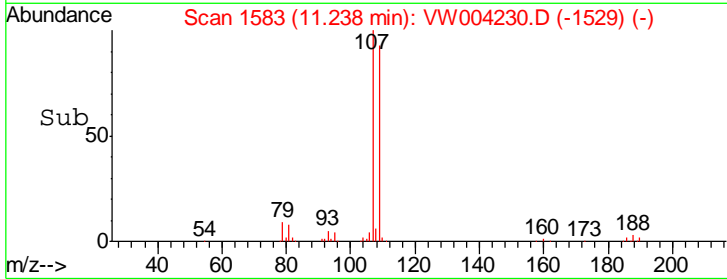
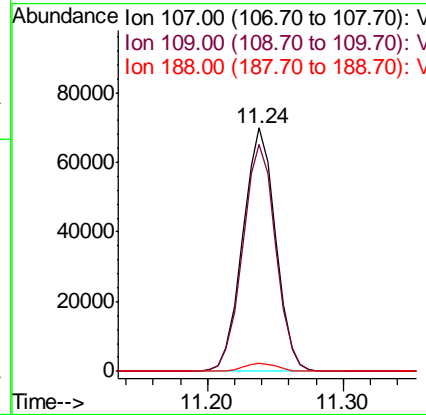
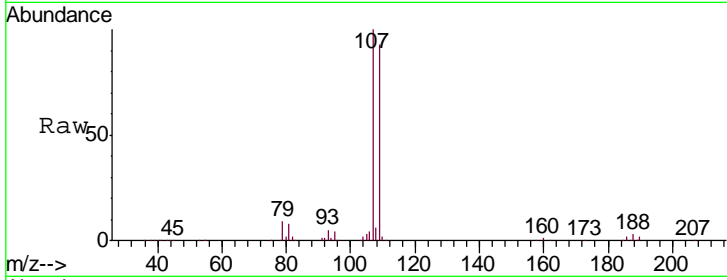




#51
 1,2-Dibromoethane
 Concen: 26.304 ug/L
 RT: 11.24 min Scan# 1583
 Delta R.T. 0.00 min
 Lab File: VW004230.D
 Acq: 26 Jul 2018 15:44

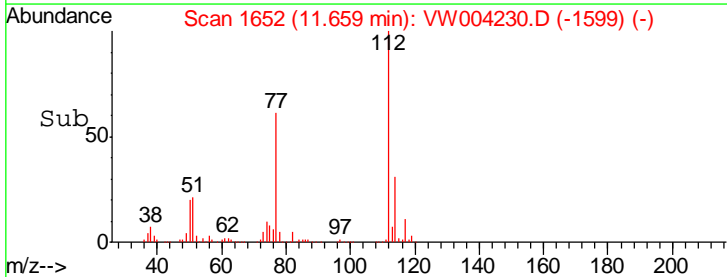
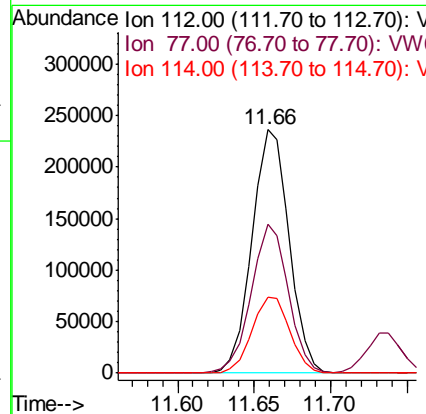
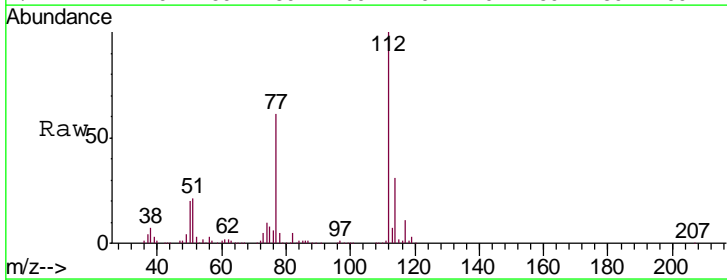
Instrument :
 MSVOA_W
 ClientSampled :

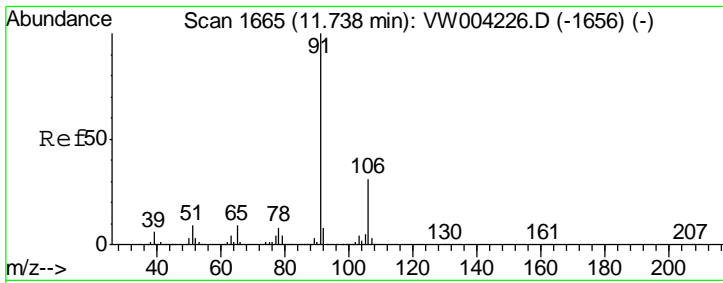
Tgt Ion	Resp	Lower	Upper
107	117705		
109	93.0	61.3	113.9
188	3.2	3.0	4.4



#52
 Chlorobenzene
 Concen: 27.141 ug/L
 RT: 11.66 min Scan# 1652
 Delta R.T. -0.01 min
 Lab File: VW004230.D
 Acq: 26 Jul 2018 15:44

Tgt Ion	Resp	Lower	Upper
112	398034		
77	60.9	45.2	67.8
114	31.2	22.9	42.5

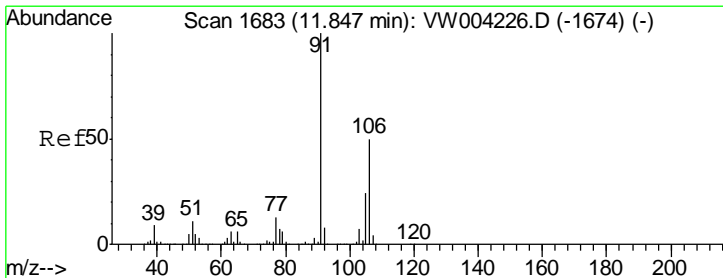
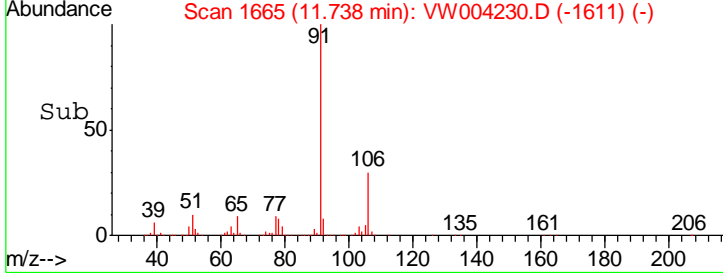
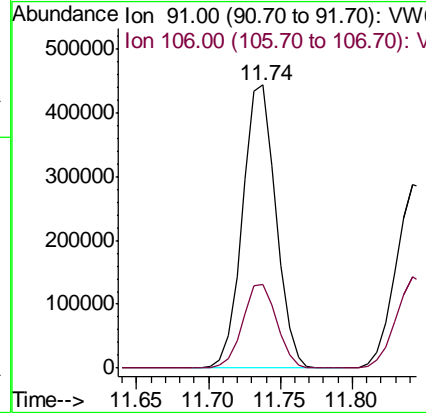
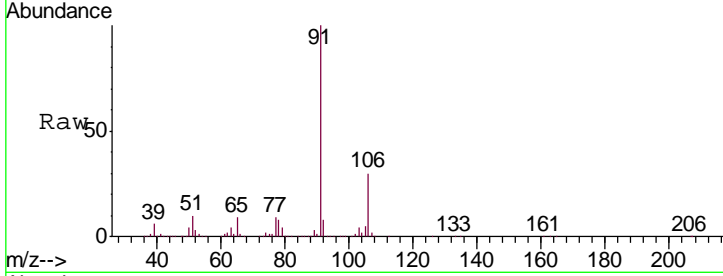




#53
 Ethylbenzene
 Concen: 28.635 ug/L
 RT: 11.74 min Scan# 1665
 Delta R.T. 0.00 min
 Lab File: VW004230.D
 Acq: 26 Jul 2018 15:44

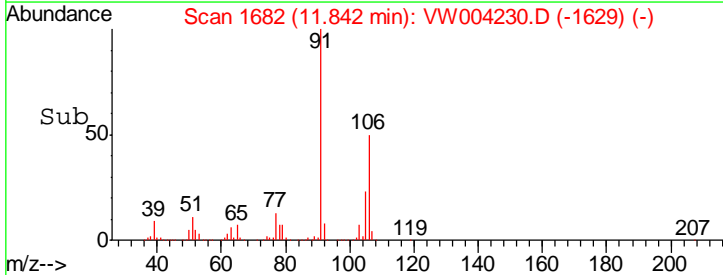
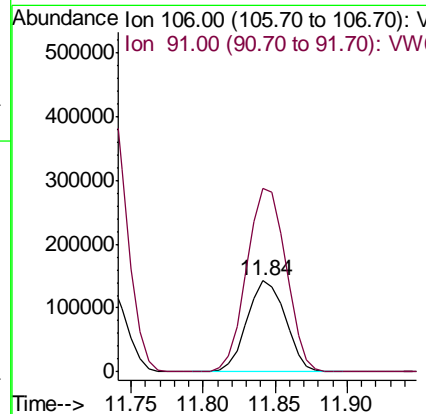
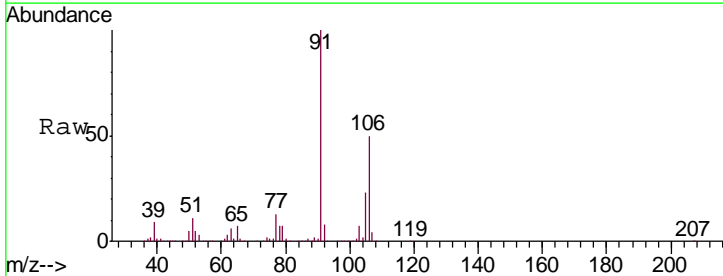
Instrument : MSVOA_W
 Client Sampled :

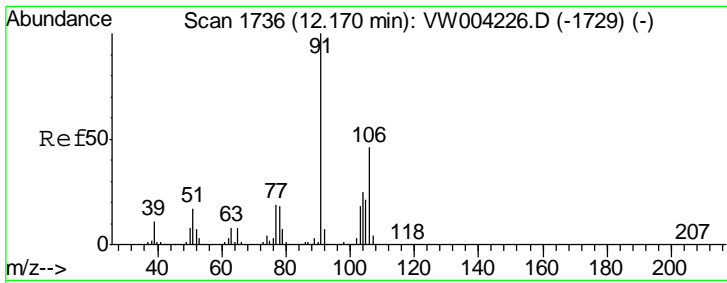
Tgt Ion	Resp	Lower	Upper
91	100		
106	29.8	22.0	40.8



#54
 m,p-Xylene
 Concen: 28.503 ug/L
 RT: 11.84 min Scan# 1682
 Delta R.T. -0.01 min
 Lab File: VW004230.D
 Acq: 26 Jul 2018 15:44

Tgt Ion	Resp	Lower	Upper
106	100		
91	201.7	138.8	257.8

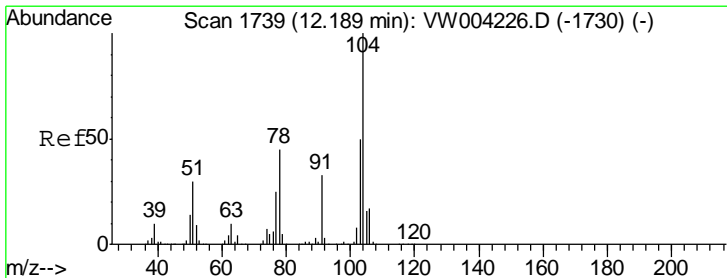
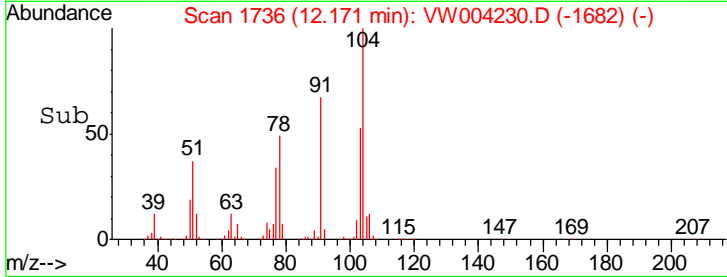
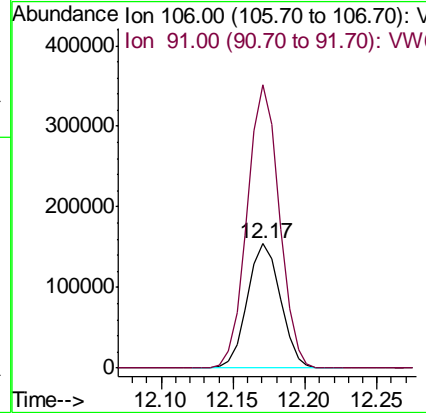
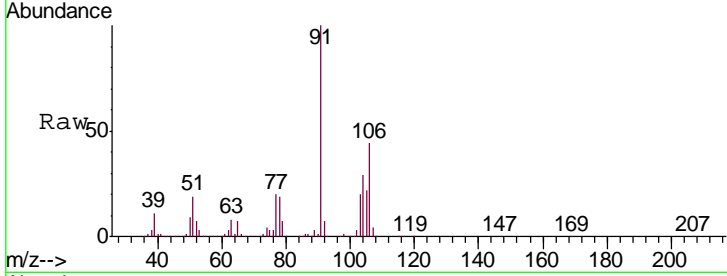




#55
 o-xylene
 Concen: 28.031 ug/L
 RT: 12.17 min Scan# 1736
 Delta R.T. 0.00 min
 Lab File: VW004230.D
 Acq: 26 Jul 2018 15:44

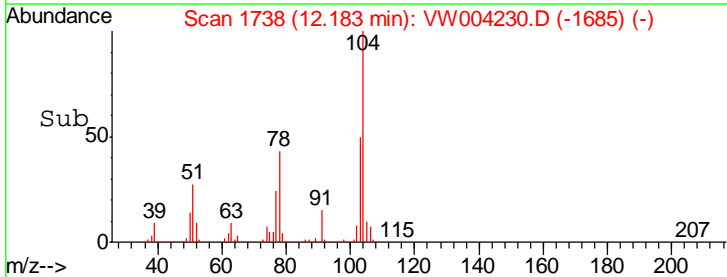
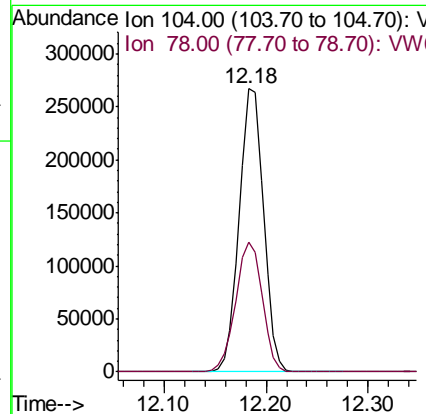
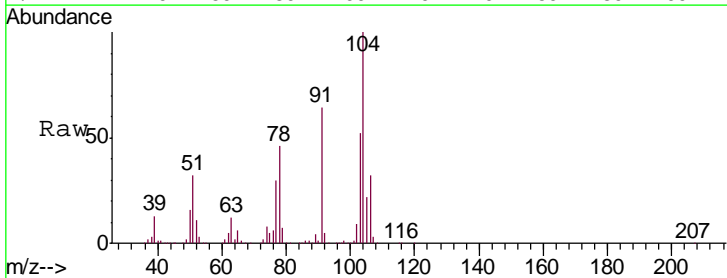
Instrument :
 MSVOA_W
 ClientSampled :

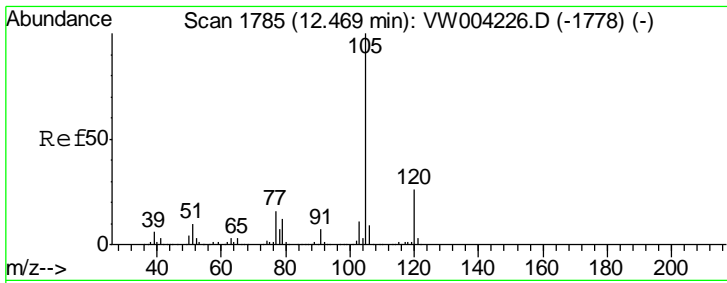
Tgt Ion: 106 Resp: 245012
 Ion Ratio Lower Upper
 106 100
 91 227.9 153.5 285.1



#56
 Styrene
 Concen: 29.127 ug/L
 RT: 12.18 min Scan# 1738
 Delta R.T. -0.01 min
 Lab File: VW004230.D
 Acq: 26 Jul 2018 15:44

Tgt Ion: 104 Resp: 441274
 Ion Ratio Lower Upper
 104 100
 78 46.0 31.7 58.9

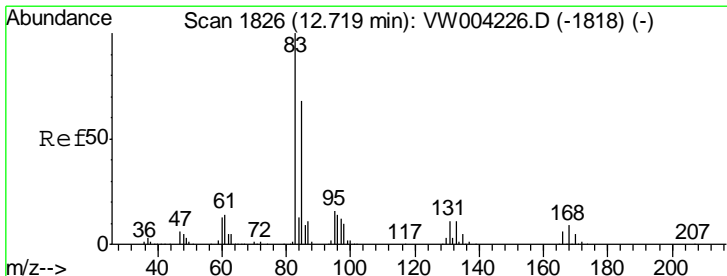
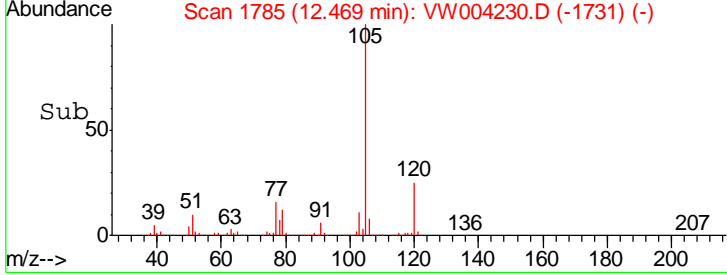
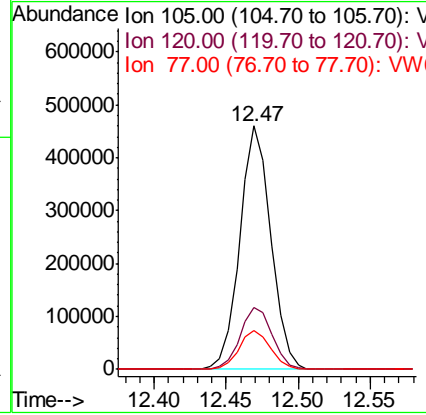
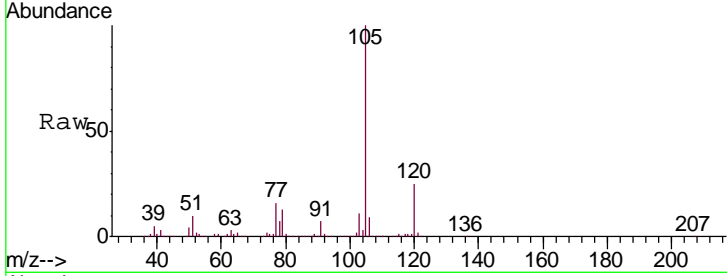




#57
 Isopropylbenzene
 Concen: 29.056 ug/L
 RT: 12.47 min Scan# 1785
 Delta R.T. 0.00 min
 Lab File: VW004230.D
 Acq: 26 Jul 2018 15:44

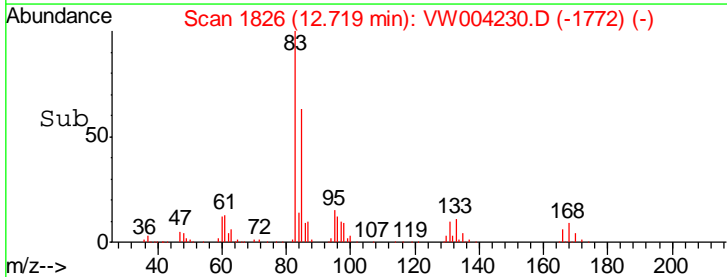
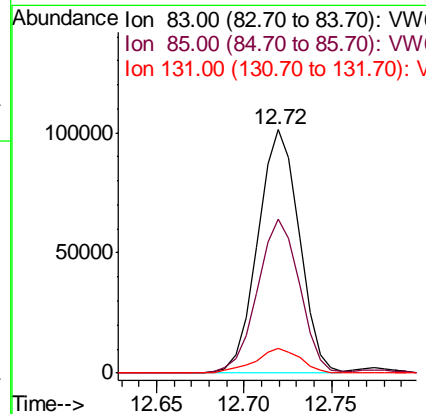
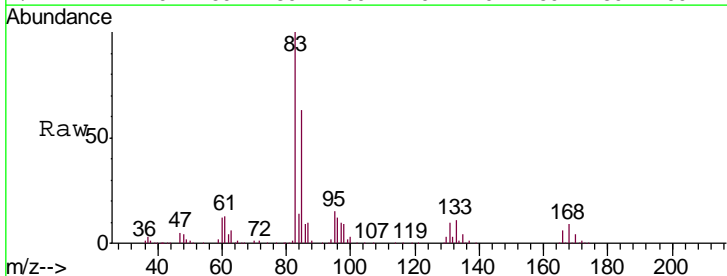
Instrument : MSVOA_W
 ClientSampled :

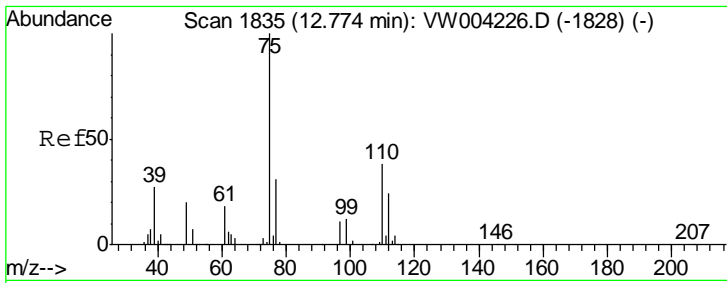
Tgt Ion	Resp	Lower	Upper
105	689986		
120	26.2	21.4	32.0
77	16.2	13.1	19.7



#58
 1,1,2,2-Tetrachloroethane
 Concen: 25.475 ug/L
 RT: 12.72 min Scan# 1826
 Delta R.T. 0.00 min
 Lab File: VW004230.D
 Acq: 26 Jul 2018 15:44

Tgt Ion	Resp	Lower	Upper
83	166679		
85	63.0	47.7	88.7
131	10.2	8.8	13.2

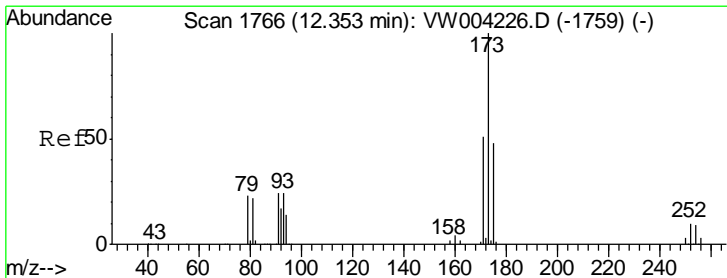
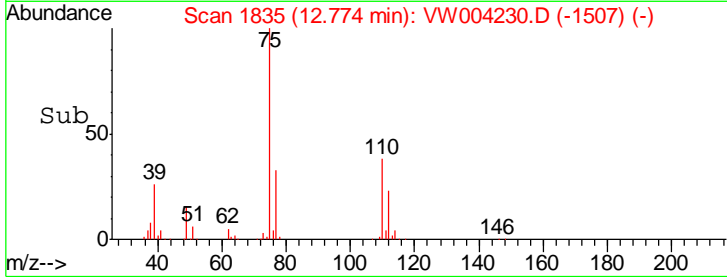
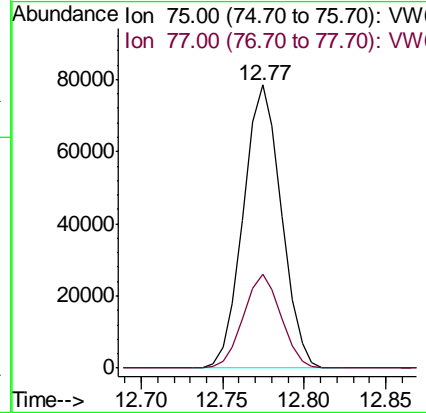
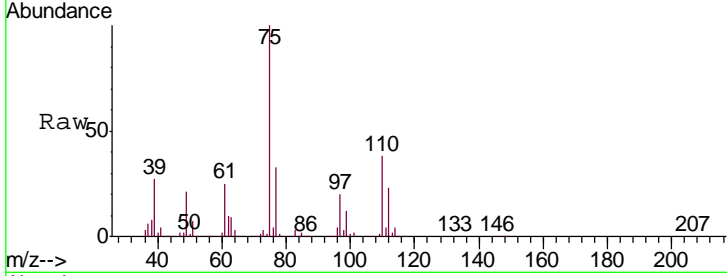




#59
 1,2,3-Trichloropropane
 Concen: 25.435 ug/L
 RT: 12.77 min Scan# 1835
 Delta R.T. 0.00 min
 Lab File: VW004230.D
 Acq: 26 Jul 2018 15:44

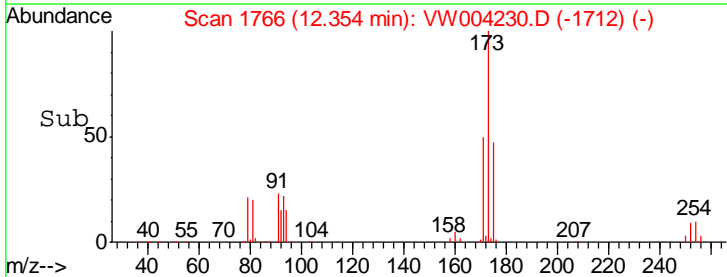
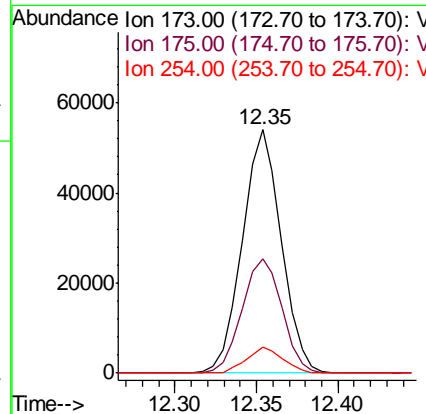
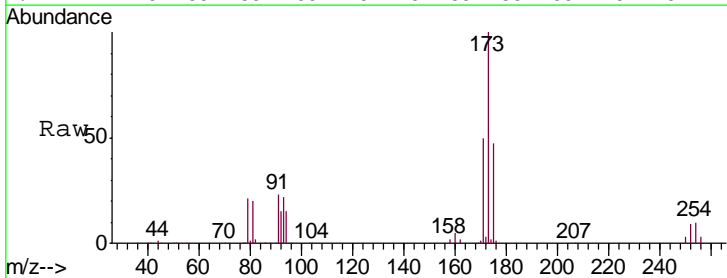
Instrument :
 MSVOA_W
 ClientSampled :

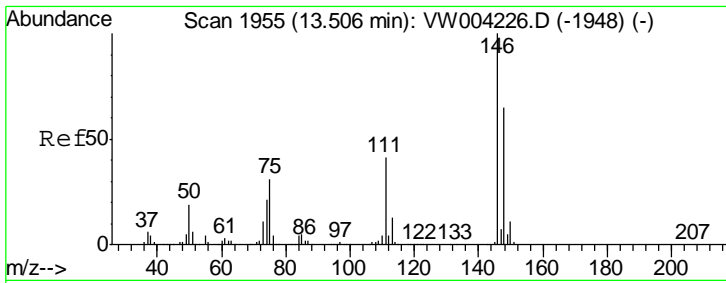
Tgt Ion: 75 Resp: 127942
 Ion Ratio Lower Upper
 75 100
 77 32.7 25.2 37.8



#62
 Bromoform
 Concen: 25.842 ug/L
 RT: 12.35 min Scan# 1766
 Delta R.T. 0.00 min
 Lab File: VW004230.D
 Acq: 26 Jul 2018 15:44

Tgt Ion: 173 Resp: 89729
 Ion Ratio Lower Upper
 173 100
 175 48.0 39.1 58.7
 254 9.7 7.8 11.6

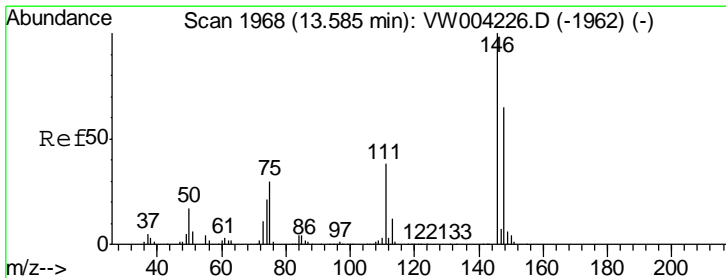
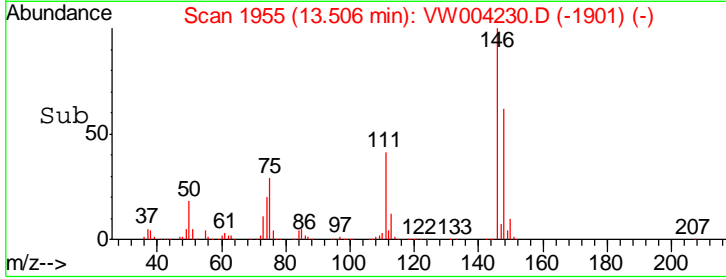
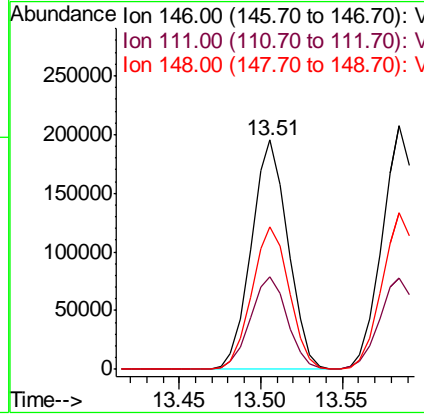
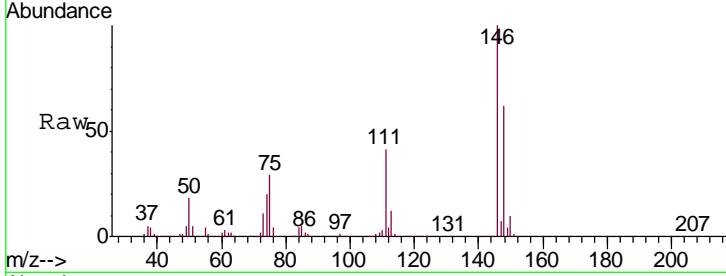




#63
 1,3-Dichlorobenzene
 Concen: 26.920 ug/L
 RT: 13.51 min Scan# 1955
 Delta R.T. 0.00 min
 Lab File: VW004230.D
 Acq: 26 Jul 2018 15:44

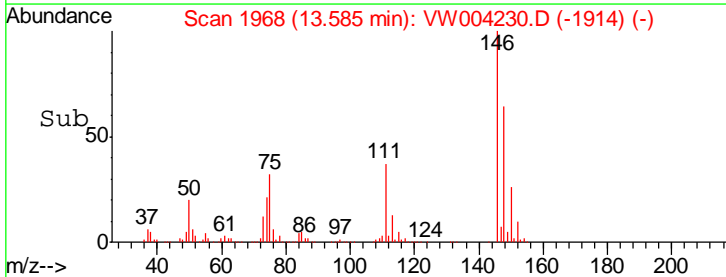
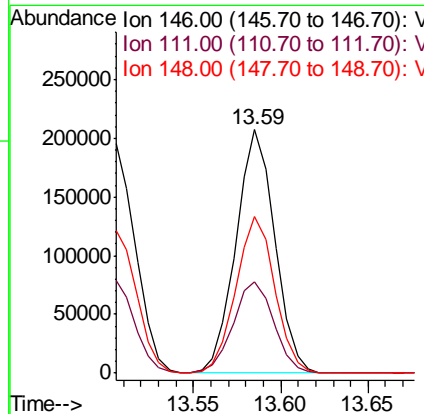
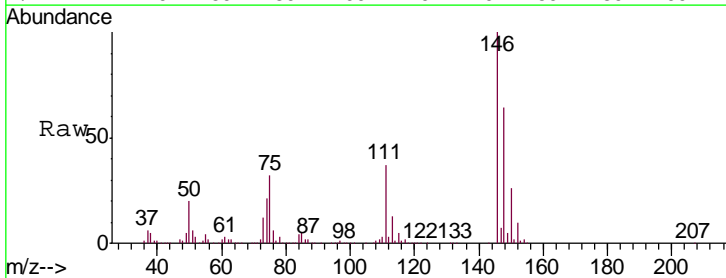
Instrument :
 MSVOA_W
 ClientSampled :

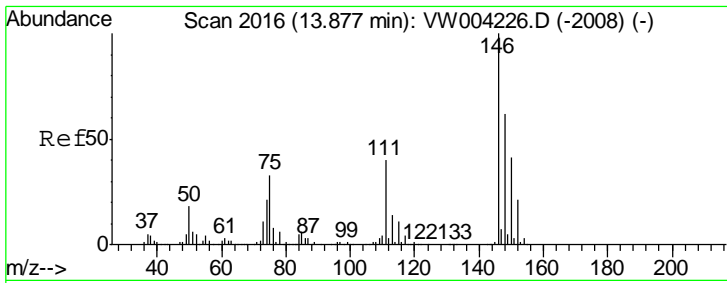
Tgt Ion	Resp	Lower	Upper
146	100		
111	40.5	29.0	53.8
148	62.3	45.1	83.9



#64
 1,4-Dichlorobenzene
 Concen: 26.609 ug/L
 RT: 13.59 min Scan# 1968
 Delta R.T. 0.00 min
 Lab File: VW004230.D
 Acq: 26 Jul 2018 15:44

Tgt Ion	Resp	Lower	Upper
146	100		
111	37.5	26.9	50.1
148	64.4	45.2	84.0

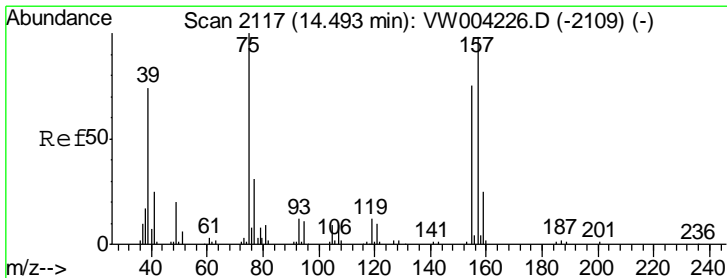
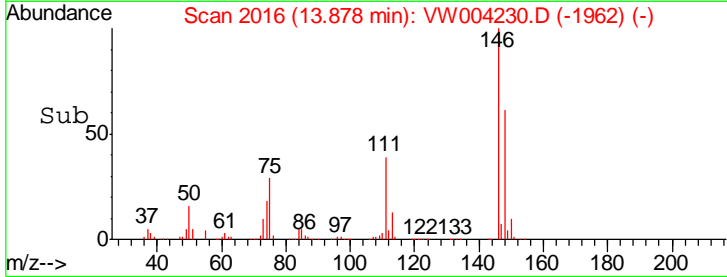
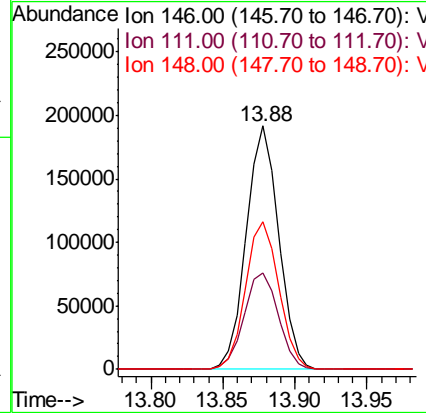
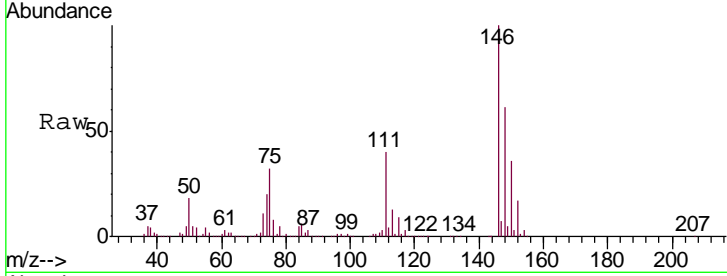




#65
 1,2-Dichlorobenzene
 Concen: 26.940 ug/L
 RT: 13.88 min Scan# 2016
 Delta R.T. 0.00 min
 Lab File: VW004230.D
 Acq: 26 Jul 2018 15:44

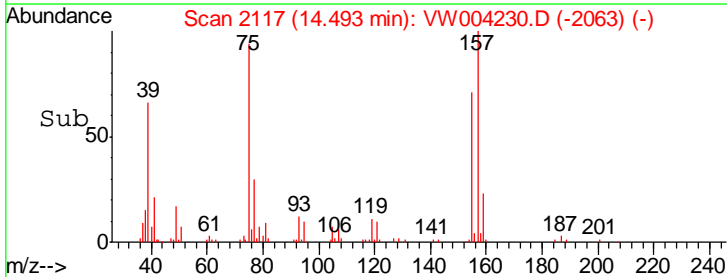
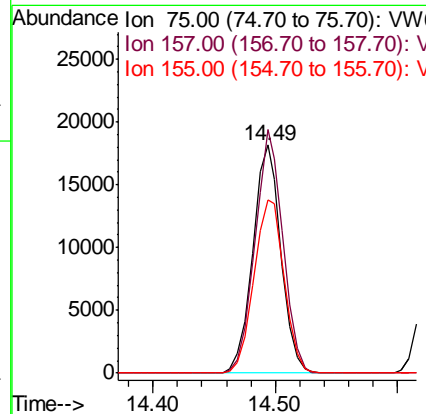
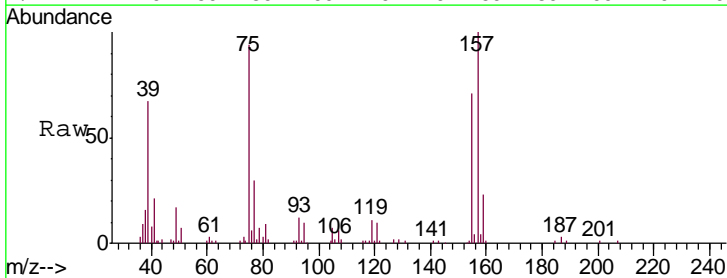
Instrument : MSVOA_W
 ClientSampled :

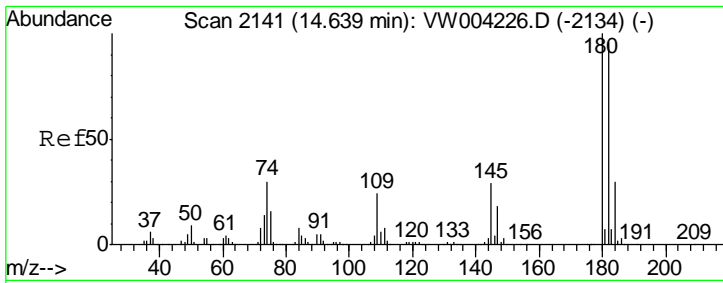
Tgt Ion	Resp	Lower	Upper
146	100		
111	39.6	31.9	47.9
148	60.9	49.8	74.8



#66
 1,2-Dibromo-3-chloropropane
 Concen: 23.319 ug/L
 RT: 14.49 min Scan# 2117
 Delta R.T. 0.00 min
 Lab File: VW004230.D
 Acq: 26 Jul 2018 15:44

Tgt Ion	Resp	Lower	Upper
75	100		
157	106.8	78.8	118.2
155	76.1	60.2	90.4



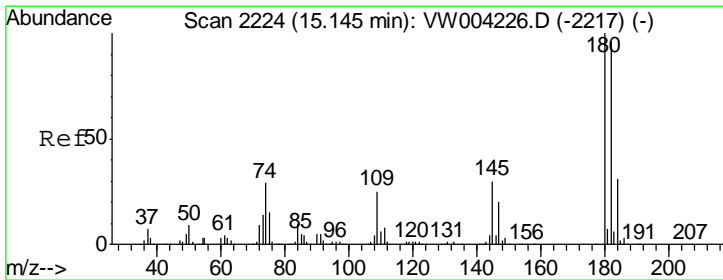
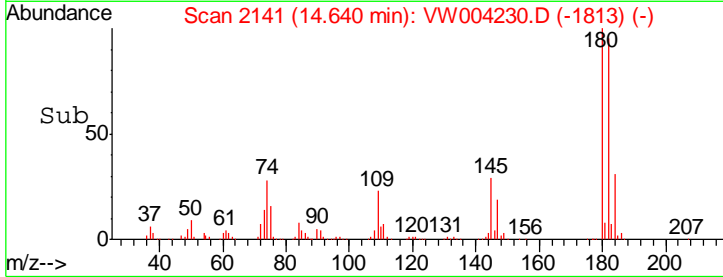
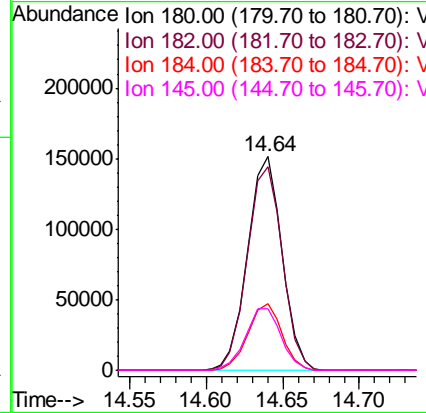
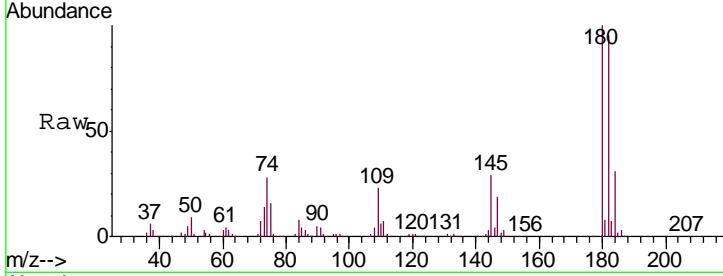


#67
 1,3,5-Trichlorobenzene
 Concen: 26.952 ug/L
 RT: 14.64 min Scan# 2141
 Delta R.T. 0.00 min
 Lab File: VW004230.D
 Acq: 26 Jul 2018 15:44

Instrument : MSVOA_W
 ClientSampled :

Tgt Ion:180 Resp: 237246

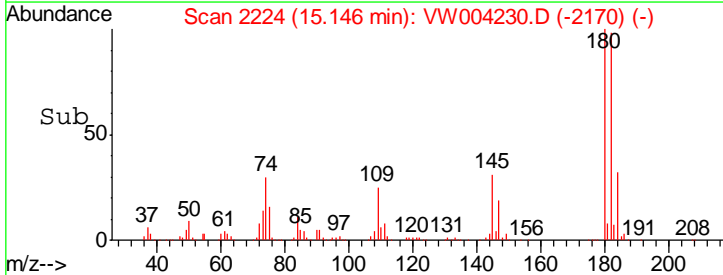
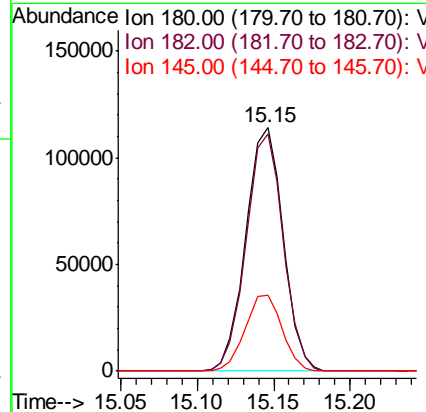
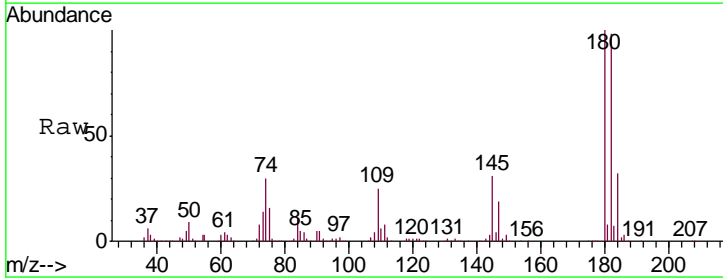
Ion	Ratio	Lower	Upper
180	100		
182	97.1	77.4	116.2
184	30.9	23.8	35.8
145	29.9	23.8	35.6

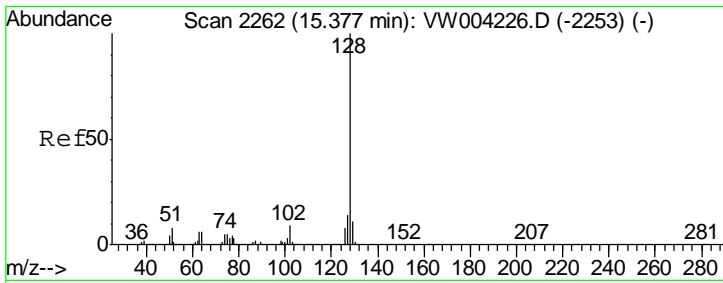


#68
 1,2,4-trichlorobenzene
 Concen: 27.027 ug/L
 RT: 15.15 min Scan# 2224
 Delta R.T. 0.00 min
 Lab File: VW004230.D
 Acq: 26 Jul 2018 15:44

Tgt Ion:180 Resp: 194025

Ion	Ratio	Lower	Upper
180	100		
182	96.6	76.2	114.2
145	30.9	24.1	36.1

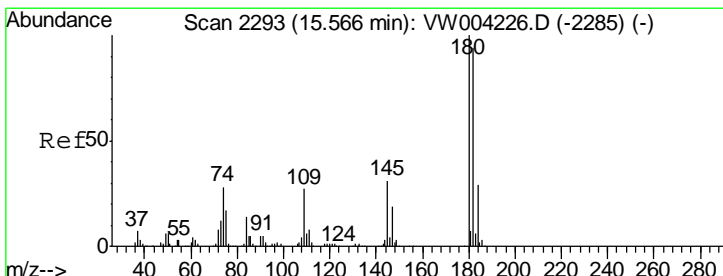
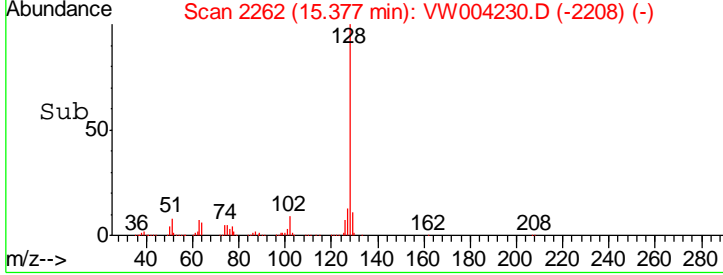
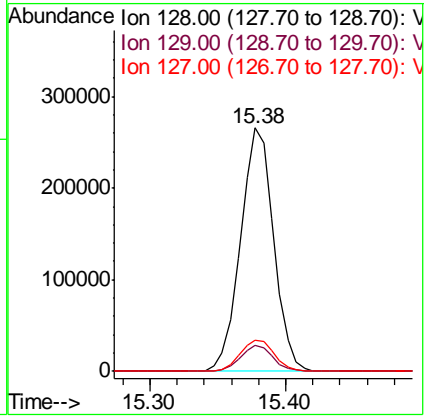
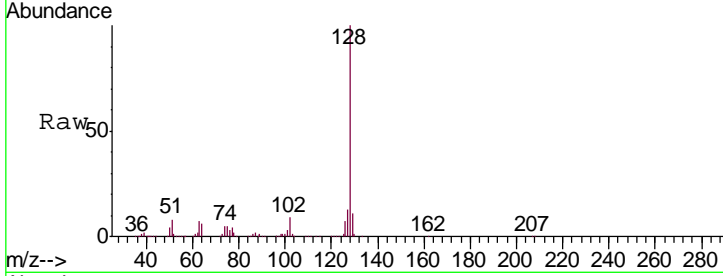




#69
 Naphthalene
 Concen: 27.329 ug/L
 RT: 15.38 min Scan# 2262
 Delta R.T. 0.00 min
 Lab File: VW004230.D
 Acq: 26 Jul 2018 15:44

Instrument : MSVOA_W
 ClientSampled :

Tgt Ion	Resp	Lower	Upper
128	450802		
129	10.7	8.8	13.2
127	13.4	11.0	16.4



#70
 1,2,3-Trichlorobenzene
 Concen: 27.262 ug/L
 RT: 15.57 min Scan# 2293
 Delta R.T. 0.00 min
 Lab File: VW004230.D
 Acq: 26 Jul 2018 15:44

Tgt Ion	Resp	Lower	Upper
180	189335		
182	93.8	76.2	114.4
145	31.6	25.2	37.8

