

Data Path : Z:\VOASRV\HPCHEM1\MSVOA W\DATA\VW072719\
 Data File : VW011524.D
 Acq On : 26 Jul 2019 18:50
 Operator : SY/VA
 Sample : K3620-13
 Misc : 6.03G/5.0ML/MSVOA W/SOIL
 ALS Vial : 18 Sample Multiplier: 1

Instrument :
 MSVOA_W
 ClientSampleId :
 CL-02-072519-B

Integration Parameters: RTEINT.P

Integrator: RTE
 Smoothing : ON Filtering: 5
 Sampling : 1 Min Area: 3 % of largest Peak
 Start Thrs: 0.2 Max Peaks: 100
 Stop Thrs : 0 Peak Location: TOP

If leading or trailing edge < 100 prefer < Baseline drop else tangent >
 Peak separation: 5

Method : Z:\VOASRV\HPCHEM1\MSVOA_W\METHOD\82W072719S.M
 Title : SW846 8260

Signal : TIC

peak #	R.T. min	first scan	max scan	last scan	PK TY	peak height	corr. area	corr. % max.	% of total
1	2.148	35	40	47	rBV	16377	32108	2.65%	0.513%
2	4.129	352	365	374	rBV2	10107	30248	2.50%	0.483%
3	4.909	483	493	514	rVB5	9883	40851	3.37%	0.652%
4	5.117	517	527	542	rVB2	3843	14548	1.20%	0.232%
5	5.940	650	662	671	rVB5	5245	17189	1.42%	0.274%
6	7.141	849	859	878	rBV	34842	105864	8.73%	1.691%
7	7.878	971	980	985	rBV	148214	352294	29.06%	5.626%
8	7.946	985	991	1002	rVB	300550	663011	54.70%	10.588%
9	8.305	1034	1050	1061	rBV	186067	428650	35.36%	6.845%
10	8.842	1128	1138	1150	rBV	452608	897011	74.00%	14.324%
11	10.323	1372	1381	1389	rBV	694501	1212138	100.00%	19.357%
12	10.701	1437	1443	1451	rBV2	9807	18874	1.56%	0.301%
13	11.628	1588	1595	1607	rBV	548343	950624	78.43%	15.181%
14	12.615	1750	1757	1766	rVB	422614	705950	58.24%	11.273%
15	13.024	1817	1824	1831	rBV6	5616	12817	1.06%	0.205%
16	13.560	1905	1912	1922	rVB	463968	758859	62.61%	12.118%
17	14.072	1989	1996	2003	rVB	10821	21077	1.74%	0.337%

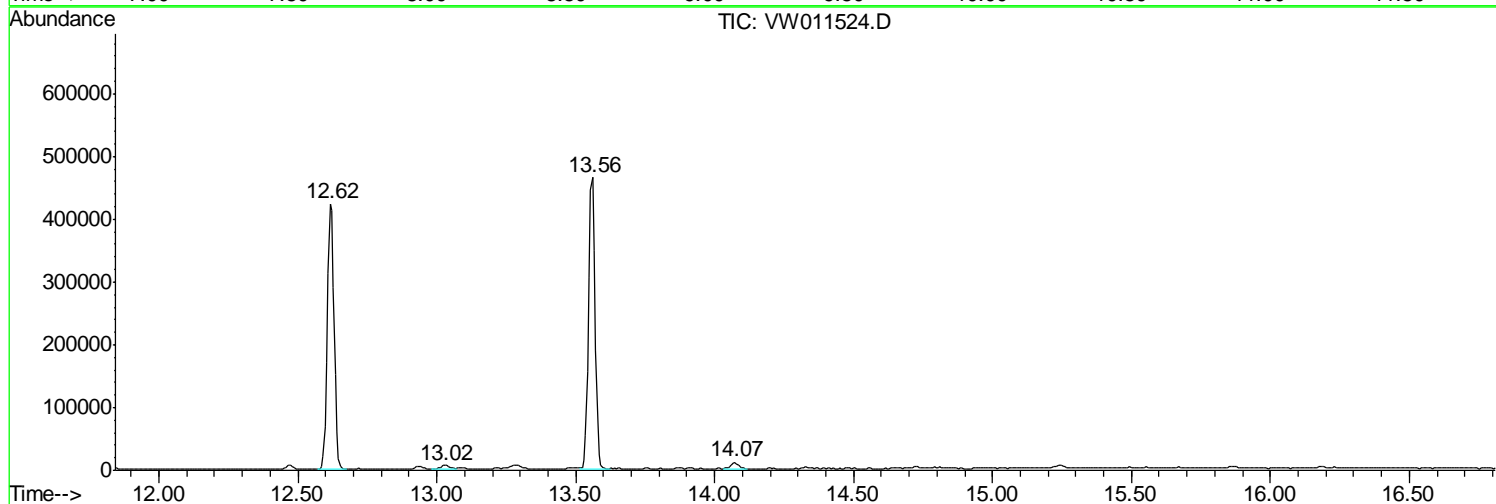
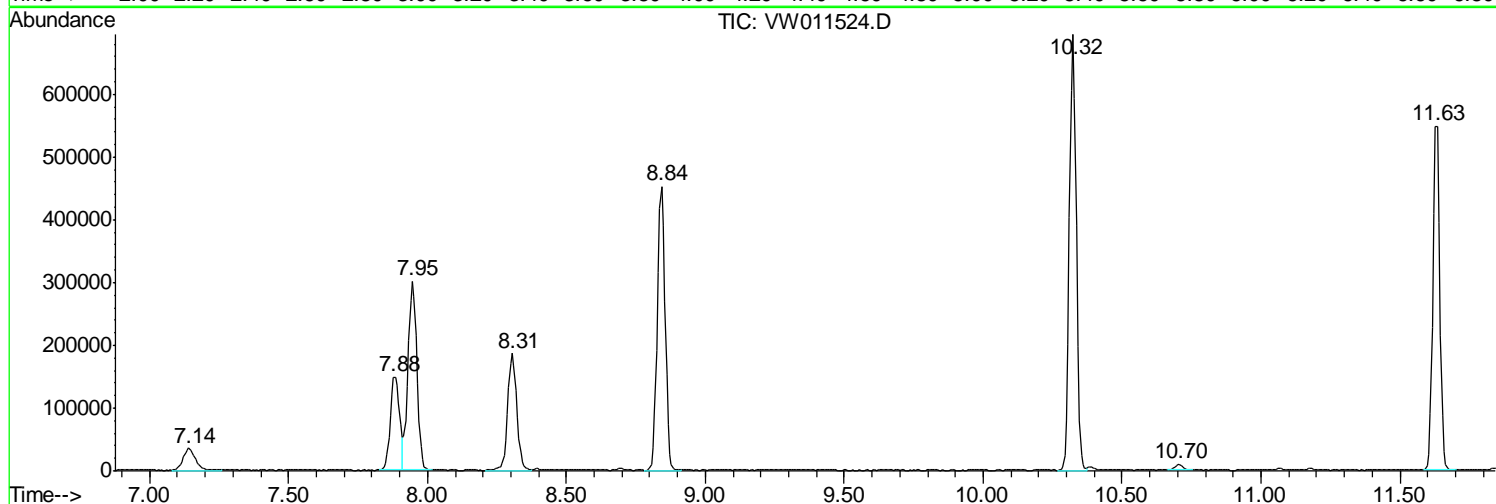
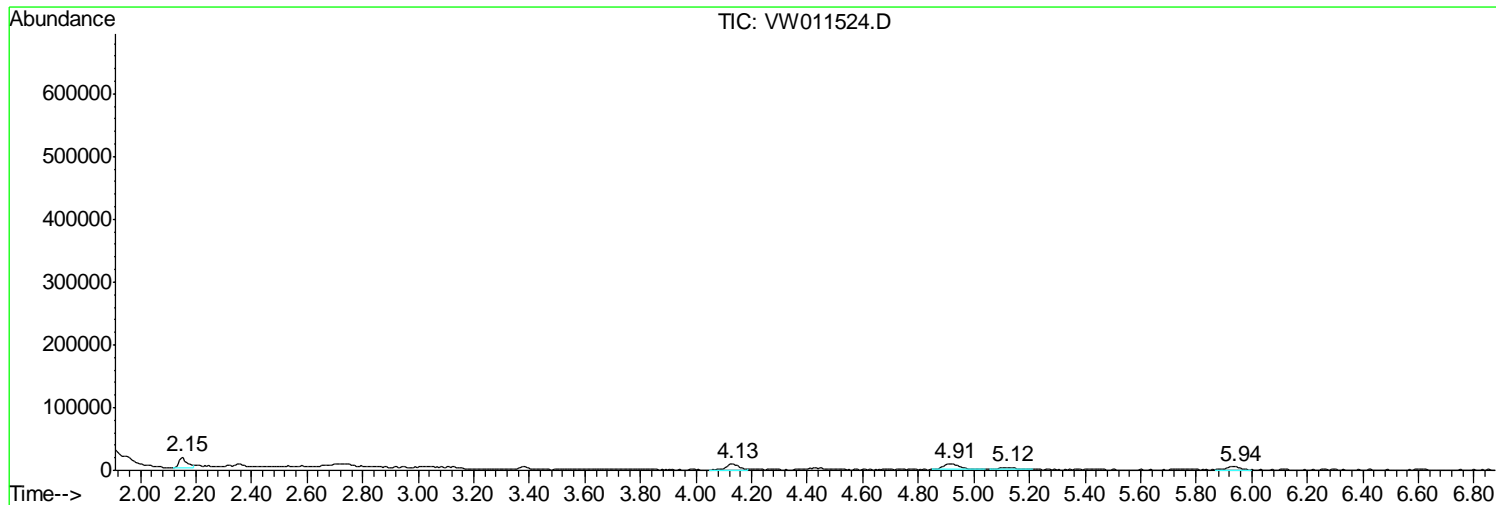
Sum of corrected areas: 6262113

Data Path : Z:\VOASRV\HPCHEM1\MSVOA W\DATA\VW072719\
Data File : VW011524.D
Acq On : 26 Jul 2019 18:50
Operator : SY/VA
Sample : K3620-13
Misc : 6.03G/5.0ML/MSVOA W/SOIL
ALS Vial : 18 Sample Multiplier: 1

Instrument :
MSVOA_W
ClientSampled :
CL-02-072519-B

Quant Method : Z:\VOASRV\HPCHEM1\MSVOA_W\METHOD\82W072719S.M
Quant Title : SW846 8260

TIC Library : C:\DATABASE\NIST11.L
TIC Integration Parameters: LSCINT.P



Data Path : Z:\VOASRV\HPCHEM1\MSVOA_W\DATA\VW072719\
Data File : VW011524.D
Acq On : 26 Jul 2019 18:50
Operator : SY/VA
Sample : K3620-13
Misc : 6.03G/5.0ML/MSVOA_W/SOIL
ALS Vial : 18 Sample Multiplier: 1

Instrument :
MSVOA_W
ClientSampleId :
CL-02-072519-B

Quant Method : Z:\VOASRV\HPCHEM1\MSVOA_W\METHOD\82W072719S.M
Quant Title : SW846 8260

TIC Library : C:\DATABASE\NIST11.L
TIC Integration Parameters: LSCINT.P

No Library Search Compounds Detected

Data Path : Z:\VOASRV\HPCHEM1\MSVOA_W\DATA\VW072719\
Data File : VW011524.D
Acq On : 26 Jul 2019 18:50
Operator : SY/VA
Sample : K3620-13
Misc : 6.03G/5.0ML/MSVOA_W/SOIL
ALS Vial : 18 Sample Multiplier: 1

Instrument :
MSVOA_W
ClientSampleId :
CL-02-072519-B

Quant Method : Z:\VOASRV\HPCHEM1\MSVOA_W\METHOD\82W072719S.M
Quant Title : SW846 8260

TIC Library : C:\DATABASE\NIST11.L
TIC Integration Parameters: LSCINT.P

TIC Top Hit name	RT	EstConc	Units	Response	--Internal Standard--			
					#	RT	Resp	Conc
