

Data Path : Z:\voasrv\HPCHEM1\MSVOA\_W\Data\VW072724\  
 Data File : VW029769.D  
 Acq On : 27 Jul 2024 09:59  
 Operator : SY/MD  
 Sample : P3361-10  
 Misc : 5.65g/10mL/MSVOA\_W/SOIL/B  
 ALS Vial : 5 Sample Multiplier: 1

Instrument :  
 MSVOA\_W  
 ClientSampleId :

Quant Time: Jul 29 04:46:10 2024  
 Quant Method : Z:\voasrv\HPCHEM1\MSVOA\_W\Method\SFAMWLM072424SMA.M  
 Quant Title : SFAM01.0  
 QLast Update : Mon Jul 29 04:44:22 2024  
 Response via : Initial Calibration

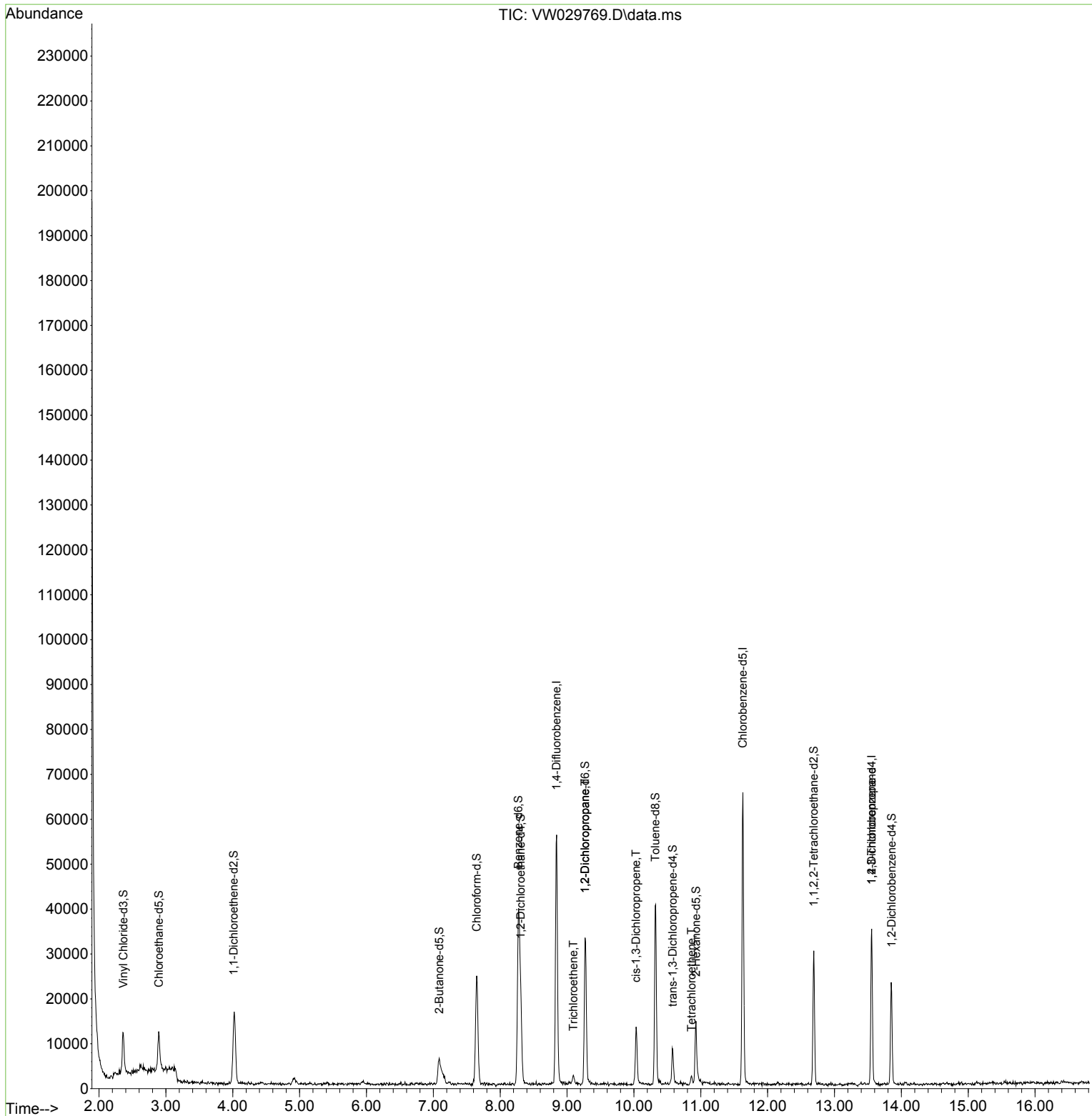
Compound	R.T.	QIon	Response	Conc	Units	Dev(Min)
Internal Standards						
1) 1,4-Difluorobenzene	8.843	114	42153	25.000	ug/L	0.00
28) Chlorobenzene-d5	11.629	117	33006	25.000	ug/L	0.00
58) 1,4-Dichlorobenzene-d4	13.556	152	8196	25.000	ug/L	0.00
System Monitoring Compounds						
4) Vinyl Chloride-d3	2.363	65	10028	16.757	ug/L	0.00
Spiked Amount	25.000	Range 30 - 150	Recovery =	67.040%		
7) Chloroethane-d5	2.893	69	9859	23.076	ug/L	0.00
Spiked Amount	25.000	Range 30 - 150	Recovery =	92.320%		
11) 1,1-Dichloroethene-d2	4.015	65	4954	18.135	ug/L	0.00
Spiked Amount	25.000	Range 45 - 110	Recovery =	72.560%		
21) 2-Butanone-d5	7.088	46	9456	57.651	ug/L	0.01
Spiked Amount	50.000	Range 20 - 135	Recovery =	115.300%		
24) Chloroform-d	7.648	84	24753	22.684	ug/L	0.00
Spiked Amount	25.000	Range 40 - 150	Recovery =	90.720%		
26) 1,2-Dichloroethane-d4	8.307	65	15248	24.533	ug/L	0.00
Spiked Amount	25.000	Range 70 - 130	Recovery =	98.120%		
32) Benzene-d6	8.270	84	38297	21.474	ug/L	0.00
Spiked Amount	25.000	Range 20 - 135	Recovery =	85.880%		
36) 1,2-Dichloropropane-d6	9.270	67	14535	25.525	ug/L	0.00
Spiked Amount	25.000	Range 70 - 120	Recovery =	102.080%		
41) Toluene-d8	10.319	98	25749	16.238	ug/L	0.00
Spiked Amount	25.000	Range 30 - 130	Recovery =	64.960%		
43) trans-1,3-Dichloroprop...	10.581	79	4205	18.249	ug/L	0.00
Spiked Amount	25.000	Range 30 - 135	Recovery =	73.000%		
47) 2-Hexanone-d5	10.928	63	3903	41.567	ug/L	0.00
Spiked Amount	50.000	Range 20 - 135	Recovery =	83.140%		
56) 1,1,2,2-Tetrachloroeth...	12.690	84	14260	33.726	ug/L	0.00
Spiked Amount	25.000	Range 45 - 120	Recovery =	134.920%#		
66) 1,2-Dichlorobenzene-d4	13.855	152	5307	20.853	ug/L	0.00
Spiked Amount	25.000	Range 75 - 120	Recovery =	83.400%		
Target Compounds						
34) Trichloroethene	9.093	95	546	0.921	ug/L #	81
37) 1,2-Dichloropropane	9.270	63	1756	2.833	ug/L #	88
39) cis-1,3-Dichloropropene	10.032	75	322	0.357	ug/L #	70
46) Tetrachloroethene	10.861	164	457	1.061	ug/L	91
61) 1,2,3-Trichloropropane	13.556	75	1384	6.943	ug/L #	69

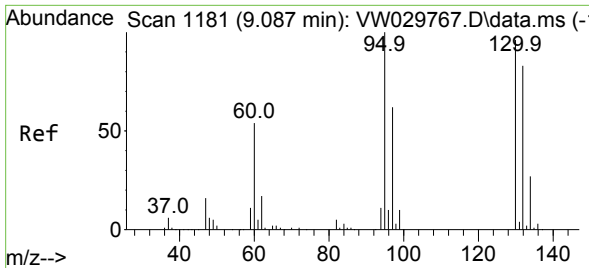
(#) = qualifier out of range (m) = manual integration (+) = signals summed

Data Path : Z:\voasrv\HPCHEM1\MSVOA\_W\Data\VW072724\  
 Data File : VW029769.D  
 Acq On : 27 Jul 2024 09:59  
 Operator : SY/MD  
 Sample : P3361-10  
 Misc : 5.65g/10mL/MSVOA\_W/SOIL/B  
 ALS Vial : 5 Sample Multiplier: 1

Instrument :  
 MSVOA\_W  
 ClientSampleId :

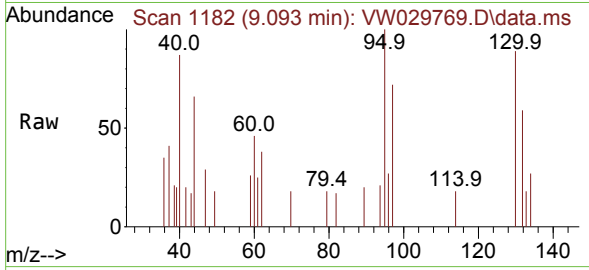
Quant Time: Jul 29 04:46:10 2024  
 Quant Method : Z:\voasrv\HPCHEM1\MSVOA\_W\Method\SFAMWLM072424SMA.M  
 Quant Title : SFAM01.0  
 QLast Update : Mon Jul 29 04:44:22 2024  
 Response via : Initial Calibration



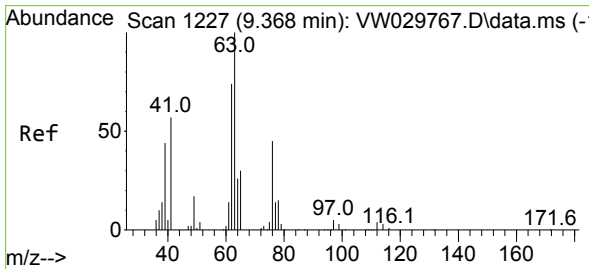
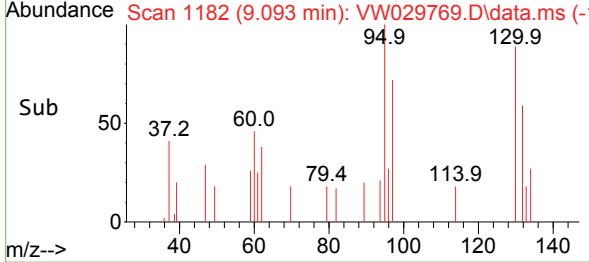
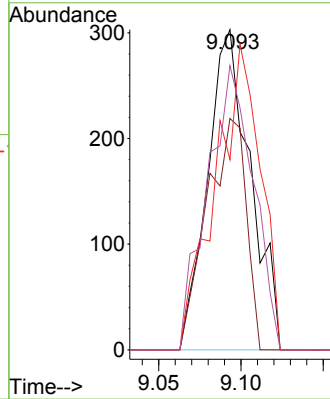


#34  
 Trichloroethene  
 Concen: 0.921 ug/L  
 RT: 9.093 min Scan# 1182  
 Delta R.T. 0.006 min  
 Lab File: VW029769.D  
 Acq: 27 Jul 2024 09:59

Instrument :  
 MSVOA\_W  
 ClientSampleId :

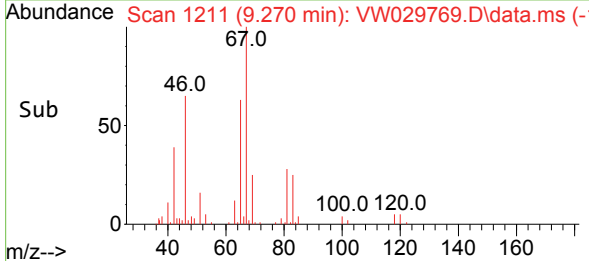
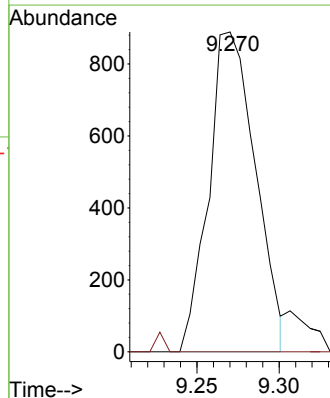
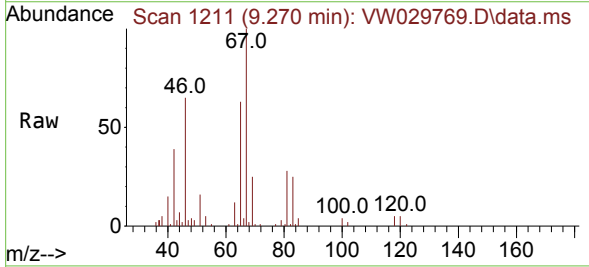


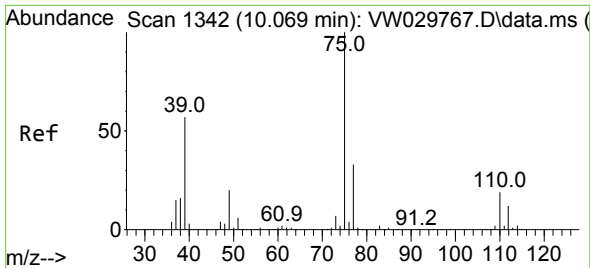
Tgt Ion: 95 Resp: 546  
 Ion Ratio Lower Upper  
 95 100  
 97 72.3 45.6 84.8  
 132 59.4 65.2 121.0#  
 130 88.8 69.9 129.7



#37  
 1,2-Dichloropropane  
 Concen: 2.833 ug/L  
 RT: 9.270 min Scan# 1211  
 Delta R.T. -0.097 min  
 Lab File: VW029769.D  
 Acq: 27 Jul 2024 09:59

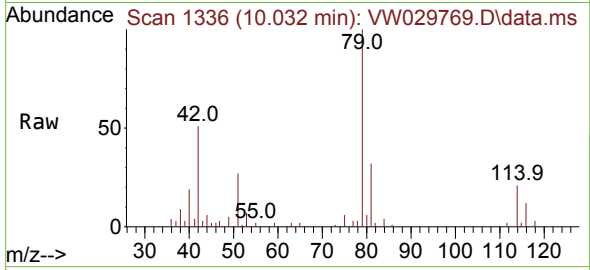
Tgt Ion: 63 Resp: 1756  
 Ion Ratio Lower Upper  
 63 100  
 112 0.0 3.3 4.9#



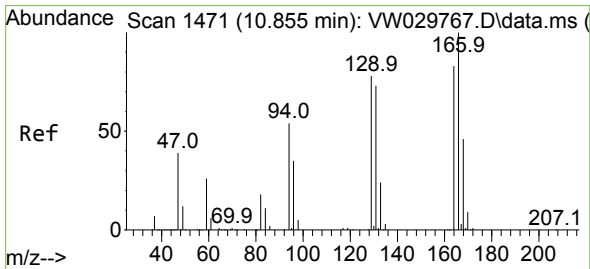
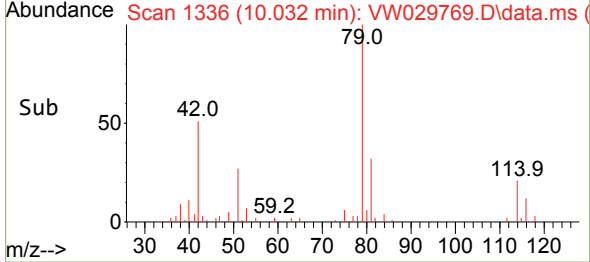
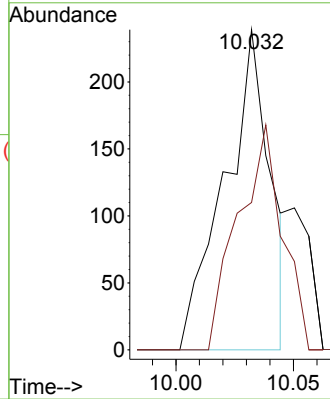


#39  
 cis-1,3-Dichloropropene  
 Concen: 0.357 ug/L  
 RT: 10.032 min Scan# 11  
 Delta R.T. -0.036 min  
 Lab File: VW029769.D  
 Acq: 27 Jul 2024 09:59

Instrument :  
 MSVOA\_W  
 ClientSampleId :

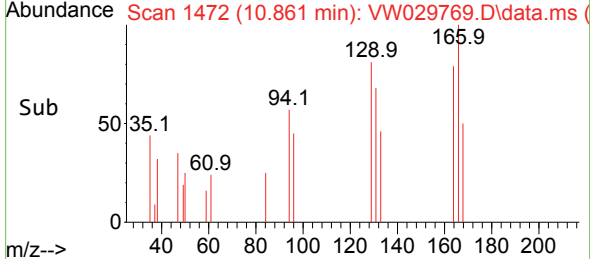
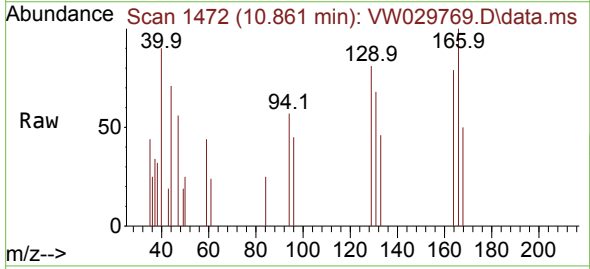
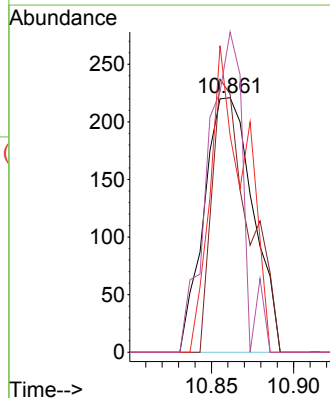


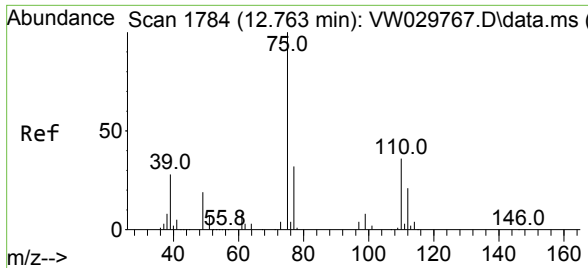
Tgt Ion: 75 Resp: 322  
 Ion Ratio Lower Upper  
 75 100  
 77 46.0 20.8 38.6#



#46  
 Tetrachloroethene  
 Concen: 1.061 ug/L  
 RT: 10.861 min Scan# 1472  
 Delta R.T. 0.006 min  
 Lab File: VW029769.D  
 Acq: 27 Jul 2024 09:59

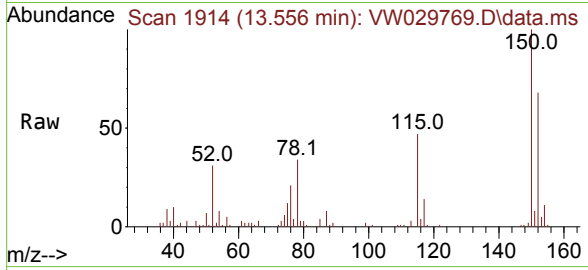
Tgt Ion:164 Resp: 457  
 Ion Ratio Lower Upper  
 164 100  
 129 101.4 77.8 144.6  
 131 85.1 70.9 131.7  
 166 125.8 91.5 169.9





#61  
 1,2,3-Trichloropropane  
 Concen: 6.943 ug/L  
 RT: 13.556 min Scan# 1914  
 Delta R.T. 0.793 min  
 Lab File: VW029769.D  
 Acq: 27 Jul 2024 09:59

Instrument :  
 MSVOA\_W  
 ClientSampleId :



Tgt Ion: 75 Resp: 1384

Ion	Ratio	Lower	Upper
75	100		
77	29.1	25.4	38.0
110	3.5	28.6	43.0#

