

Data Path : Z:\voasrv\HPCHEM1\MSVOA_W\Data\VW072724\
 Data File : VW029772.D
 Acq On : 27 Jul 2024 11:11
 Operator : SY/MD
 Sample : P3361-13
 Misc : 5.00g/10mL/MSVOA_W/SOIL/B
 ALS Vial : 8 Sample Multiplier: 1

Instrument :
 MSVOA_W
 ClientSampleId :
 E20P3

Integration Parameters: LSCINT.P

Integrator: RTE
 Smoothing : OFF
 Sampling : 1
 Start Thrs : 0.2
 Stop Thrs : 0

Filtering: 5
 Min Area: 0 % of largest Peak
 Max Peaks: 100
 Peak Location: TOP

If leading or trailing edge < 100 prefer < Baseline drop else tangent >
 Peak separation: 5

Method : Z:\voasrv\HPCHEM1\MSVOA_W\Method\SFAMWLM072424SMA.M
 Title : SFAM01.0

Signal : TIC: VW029772.D\data.ms

peak #	R.T. min	first scan	max scan	last scan	PK TY	peak height	corr. area	corr. % max.	% of total
1	2.363	72	78	91	rBV	33904	79651	7.51%	1.141%
2	2.893	160	165	179	rVB	28668	80311	7.58%	1.151%
3	3.204	214	216	219	rBV3	854	780	0.07%	0.011%
4	3.478	258	261	262	rBV2	611	487	0.05%	0.007%
5	3.570	273	276	277	rBV2	626	590	0.06%	0.008%
6	3.820	315	317	319	rVB2	468	370	0.03%	0.005%
7	3.844	319	321	323	rBV3	414	402	0.04%	0.006%
8	4.021	338	350	365	rBV2	67308	220184	20.77%	3.155%
9	4.277	390	392	393	rBV2	446	350	0.03%	0.005%
10	4.314	396	398	401	rBV3	662	591	0.06%	0.008%
11	4.466	419	423	424	rBV3	464	556	0.05%	0.008%
12	4.533	430	434	435	rVV2	498	589	0.06%	0.008%
13	4.588	439	443	445	rBV3	459	761	0.07%	0.011%
14	4.734	464	467	468	rBV2	434	429	0.04%	0.006%
15	4.795	476	477	480	rBV2	543	587	0.06%	0.008%
16	4.911	486	496	508	rBV2	5583	21394	2.02%	0.307%
17	5.045	516	518	522	rBV4	530	627	0.06%	0.009%
18	5.143	533	534	537	rBV3	447	533	0.05%	0.008%
19	5.399	571	576	577	rBV2	290	404	0.04%	0.006%
20	5.667	616	620	624	rVB4	676	820	0.08%	0.012%
21	5.777	636	638	639	rVB	720	394	0.04%	0.006%
22	5.801	639	642	643	rBV2	425	373	0.04%	0.005%
23	5.819	643	645	646	rBV2	555	356	0.03%	0.005%
24	5.874	652	654	655	rVB2	814	479	0.05%	0.007%
25	5.893	655	657	658	rBV2	687	411	0.04%	0.006%
26	5.941	661	665	668	rVV5	1211	2041	0.19%	0.029%
27	6.039	677	681	682	rBV3	629	595	0.06%	0.009%
28	6.252	714	716	720	rVB4	360	342	0.03%	0.005%
29	6.289	720	722	725	rBV4	397	478	0.05%	0.007%
30	6.362	733	734	737	rVB3	488	346	0.03%	0.005%
31	6.392	737	739	744	rBV3	262	564	0.05%	0.008%
32	6.490	753	755	760	rBV5	449	805	0.08%	0.012%
33	6.563	763	767	769	rVV2	531	610	0.06%	0.009%
34	6.588	769	771	774	rVB4	658	664	0.06%	0.010%
35	6.618	774	776	778	rBV3	481	602	0.06%	0.009%
36	6.874	817	818	822	rBV3	537	509	0.05%	0.007%

Data Path : Z:\voasrv\HPCHEM1\MSVOA_W\Data\VW072724\
 Data File : VW029772.D
 Acq On : 27 Jul 2024 11:11
 Operator : SY/MD
 Sample : P3361-13
 Misc : 5.00g/10mL/MSVOA_W/SOIL/B
 ALS Vial : 8 Sample Multiplier: 1

Instrument :
 MSVOA_W
 ClientSampleId :
 E20P3

Integration Parameters: LSCINT.P

Integrator: RTE
 Smoothing : OFF
 Sampling : 1
 Start Thrs: 0.2
 Stop Thrs : 0

Filtering: 5
 Min Area: 0 % of largest Peak
 Max Peaks: 100
 Peak Location: TOP

If leading or trailing edge < 100 prefer < Baseline drop else tangent >
 Peak separation: 5

Method : Z:\voasrv\HPCHEM1\MSVOA_W\Method\SFAMWLM072424SMA.M
 Title : SFAM01.0

37	6.923	824	826	829	rVB2	531	497	0.05%	0.007%
38	6.984	834	836	838	rBV3	497	497	0.05%	0.007%
39	7.075	842	851	868	rBV	32144	102301	9.65%	1.466%
40	7.429	907	909	913	rVB5	520	569	0.05%	0.008%
41	7.551	926	929	930	rBV3	514	654	0.06%	0.009%
42	7.648	935	945	957	rBV	150052	374740	35.35%	5.370%
43	7.843	975	977	979	rBV2	503	464	0.04%	0.007%
44	8.002	1000	1003	1006	rVB4	674	923	0.09%	0.013%
45	8.038	1006	1009	1011	rBV2	505	771	0.07%	0.011%
46	8.057	1011	1012	1016	rVB2	603	478	0.05%	0.007%
47	8.136	1023	1025	1027	rVB2	494	453	0.04%	0.006%
48	8.166	1027	1030	1034	rVB3	393	561	0.05%	0.008%
49	8.276	1037	1048	1062	rBV2	269465	821833	77.52%	11.777%
50	8.496	1082	1084	1088	rVB5	751	807	0.08%	0.012%
51	8.569	1095	1096	1099	rBV2	500	390	0.04%	0.006%
52	8.660	1109	1111	1114	rBV4	460	497	0.05%	0.007%
53	8.843	1130	1141	1154	rBV	448959	895350	84.46%	12.831%
54	9.178	1194	1196	1199	rBV3	468	342	0.03%	0.005%
55	9.270	1202	1211	1222	rBV	206938	434915	41.02%	6.233%
56	9.416	1233	1235	1236	rVB	877	418	0.04%	0.006%
57	9.483	1244	1246	1248	rBV2	426	487	0.05%	0.007%
58	9.508	1248	1250	1253	rVB4	667	570	0.05%	0.008%
59	9.624	1264	1269	1270	rBV3	686	753	0.07%	0.011%
60	9.660	1271	1275	1281	rVB5	1819	3725	0.35%	0.053%
61	9.873	1308	1310	1315	rVB4	768	846	0.08%	0.012%
62	9.934	1317	1320	1321	rBV3	441	411	0.04%	0.006%
63	9.959	1321	1324	1327	rBV3	497	623	0.06%	0.009%
64	10.032	1329	1336	1345	rBV	94702	172211	16.24%	2.468%
65	10.325	1376	1384	1392	rBV	338398	609342	57.48%	8.732%
66	10.575	1419	1425	1437	rVB	61638	110826	10.45%	1.588%
67	10.672	1439	1441	1443	rBV3	689	578	0.05%	0.008%
68	10.861	1467	1472	1476	rBV5	1951	3839	0.36%	0.055%
69	10.922	1476	1482	1501	rVB	116601	205819	19.41%	2.949%
70	11.166	1520	1522	1527	rBV4	924	1167	0.11%	0.017%
71	11.629	1590	1598	1606	rBV	620851	1060136	100.00%	15.192%
72	11.958	1650	1652	1655	rBV4	519	665	0.06%	0.010%
73	12.093	1673	1674	1677	rBV2	596	519	0.05%	0.007%
74	12.147	1681	1683	1686	rBV3	703	943	0.09%	0.014%
75	12.184	1686	1689	1690	rBV2	626	667	0.06%	0.010%
76	12.239	1695	1698	1701	rBV4	606	876	0.08%	0.013%

Data Path : Z:\voasrv\HPCHEM1\MSVOA_W\Data\VW072724\
 Data File : VW029772.D
 Acq On : 27 Jul 2024 11:11
 Operator : SY/MD
 Sample : P3361-13
 Misc : 5.00g/10mL/MSVOA_W/SOIL/B
 ALS Vial : 8 Sample Multiplier: 1

Instrument :
 MSVOA_W
 ClientSampleId :
 E20P3

Integration Parameters: LSCINT.P

Integrator: RTE
 Smoothing : OFF
 Sampling : 1
 Start Thrs : 0.2
 Stop Thrs : 0

Filtering: 5
 Min Area: 0 % of largest Peak
 Max Peaks: 100
 Peak Location: TOP

If leading or trailing edge < 100 prefer < Baseline drop else tangent >
 Peak separation: 5

Method : Z:\voasrv\HPCHEM1\MSVOA_W\Method\SFAMWLM072424SMA.M
 Title : SFAM01.0

77	12.428	1727	1729	1731	rBV2	522	342	0.03%	0.005%
78	12.690	1764	1772	1780	rBV	179134	294083	27.74%	4.214%
79	12.922	1805	1810	1812	rBV4	908	1245	0.12%	0.018%
80	13.159	1847	1849	1852	rVB2	554	555	0.05%	0.008%
81	13.202	1854	1856	1857	rVB	728	435	0.04%	0.006%
82	13.251	1857	1864	1866	rBV6	954	2005	0.19%	0.029%
83	13.294	1869	1871	1875	rVV4	606	717	0.07%	0.010%
84	13.391	1886	1887	1889	rBV	609	390	0.04%	0.006%
85	13.434	1892	1894	1898	rBV2	637	654	0.06%	0.009%
86	13.483	1898	1902	1903	rBV3	1041	1309	0.12%	0.019%
87	13.556	1907	1914	1923	rBV	567795	893345	84.27%	12.802%
88	13.848	1955	1962	1972	rBV	324585	541283	51.06%	7.757%
89	14.610	2085	2087	2088	rBV2	569	421	0.04%	0.006%
90	14.714	2102	2104	2108	rVB5	1789	2119	0.20%	0.030%
91	14.799	2112	2118	2120	rVB5	848	1152	0.11%	0.017%
92	14.830	2120	2123	2127	rBV5	711	1142	0.11%	0.016%
93	14.982	2144	2148	2150	rBV5	738	989	0.09%	0.014%
94	15.446	2222	2224	2226	rBV2	495	427	0.04%	0.006%
95	15.470	2226	2228	2229	rBV2	657	519	0.05%	0.007%
96	15.635	2253	2255	2258	rBV2	531	643	0.06%	0.009%
97	15.750	2272	2274	2276	rBV3	577	510	0.05%	0.007%
98	16.153	2339	2340	2342	rBV2	630	506	0.05%	0.007%
99	16.256	2356	2357	2360	rBV2	457	358	0.03%	0.005%
100	16.561	2405	2407	2409	rBV	541	542	0.05%	0.008%

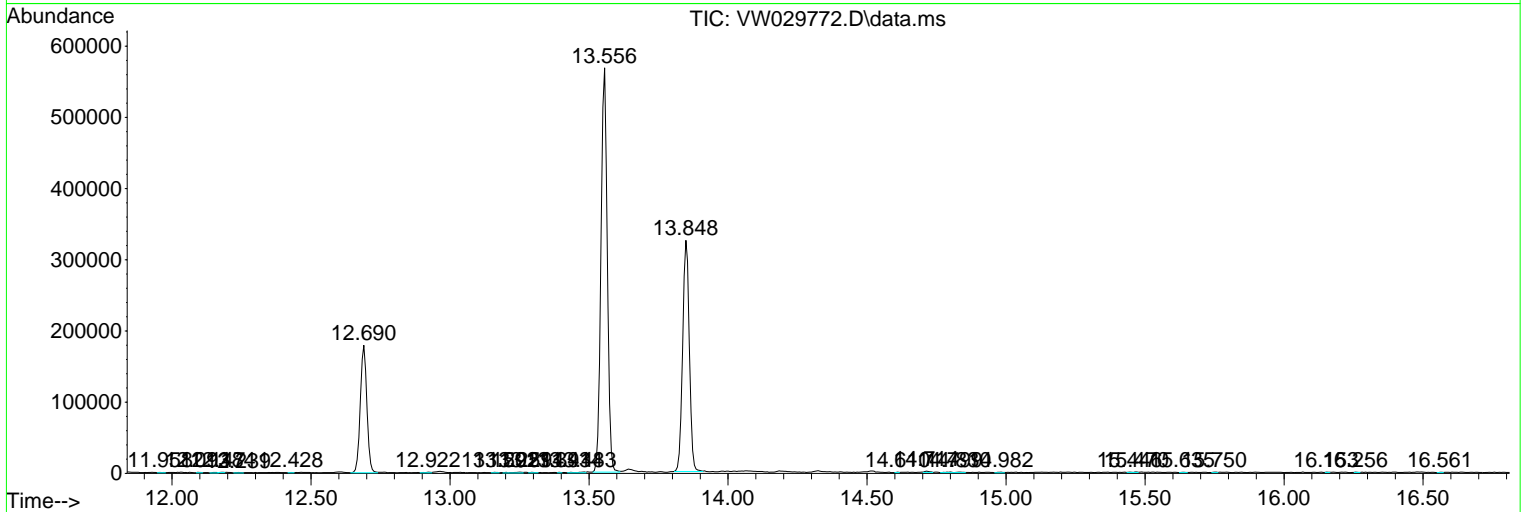
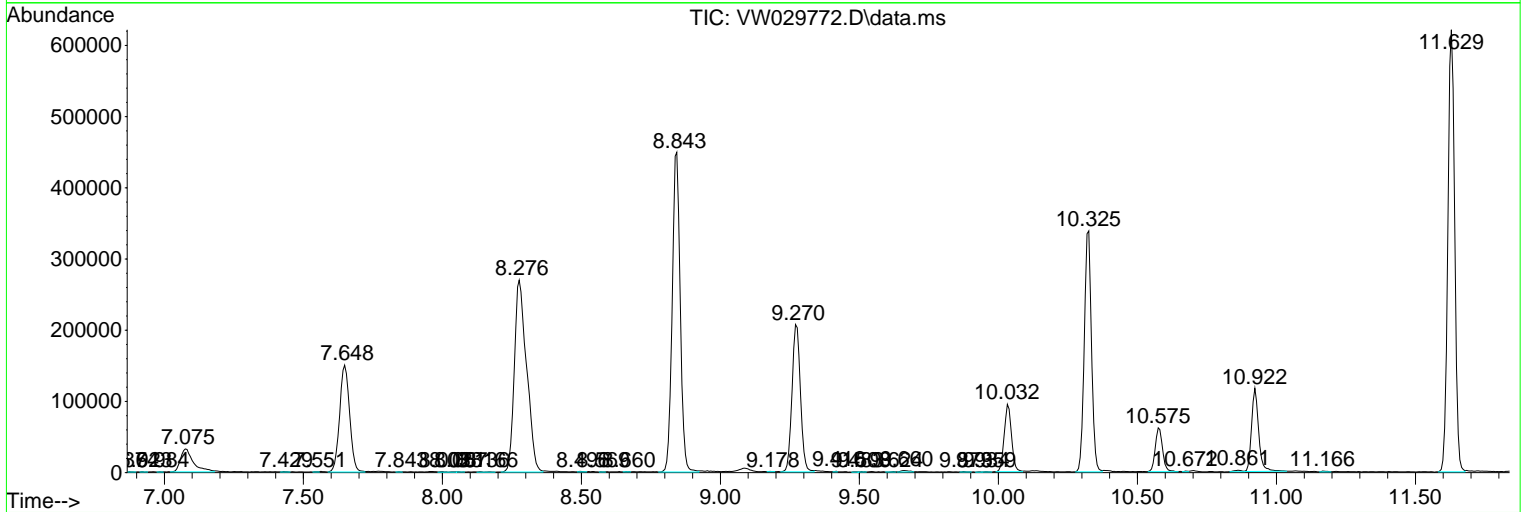
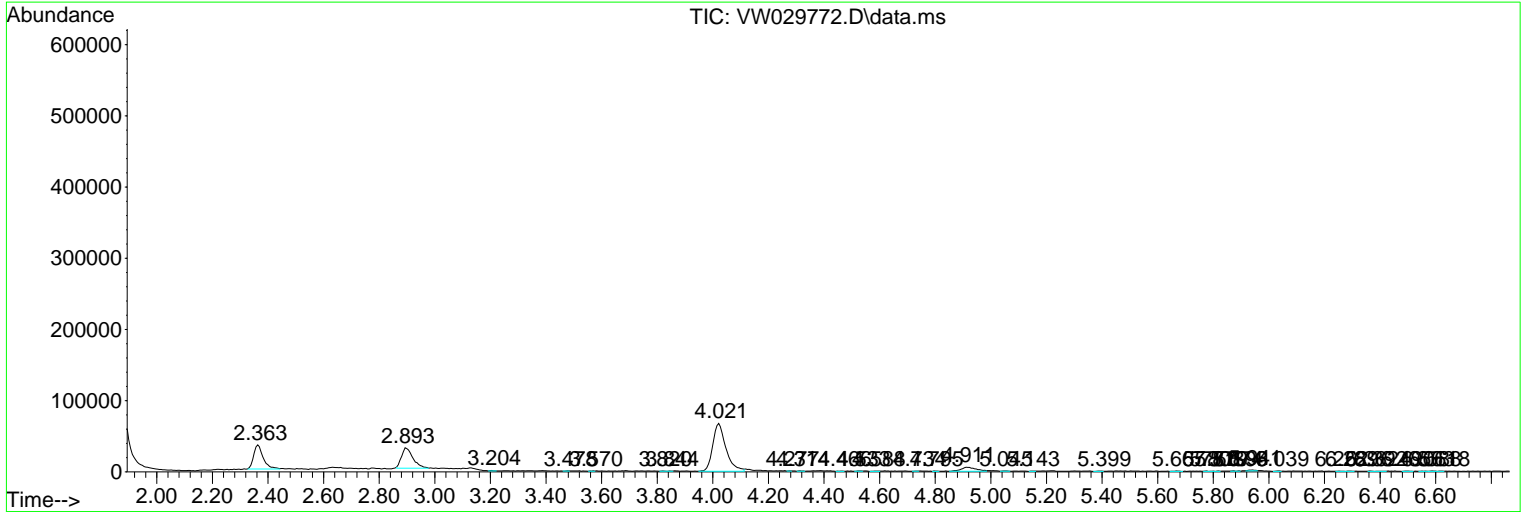
Sum of corrected areas: 6978139

Data Path : Z:\voasrv\HPCHEM1\MSVOA_W\Data\VW072724\
 Data File : VW029772.D
 Acq On : 27 Jul 2024 11:11
 Operator : SY/MD
 Sample : P3361-13
 Misc : 5.00g/10mL/MSVOA_W/SOIL/B
 ALS Vial : 8 Sample Multiplier: 1

Instrument :
 MSVOA_W
 ClientSampleId :
 E20P3

Quant Method : Z:\voasrv\HPCHEM1\MSVOA_W\Method\SFAMWLM072424SMA.M
 Quant Title : SFAM01.0

TIC Library : C:\Database\NIST20.L
 TIC Integration Parameters: LSCINT.P



Library Search Compound Report

Data Path : Z:\voasrv\HPCHEM1\MSVOA_W\Data\VW072724\
Data File : VW029772.D
Acq On : 27 Jul 2024 11:11
Operator : SY/MD
Sample : P3361-13
Misc : 5.00g/10mL/MSVOA_W/SOIL/B
ALS Vial : 8 Sample Multiplier: 1

Instrument :
MSVOA_W
ClientSampleId :
E20P3

Quant Method : Z:\voasrv\HPCHEM1\MSVOA_W\Method\SFAMWLM072424SMA.M
Quant Title : SFAM01.0

TIC Library : C:\Database\NIST20.L
TIC Integration Parameters: LSCINT.P

No Library Search Compounds Detected

Data Path : Z:\voasrv\HPCHEM1\MSVOA_W\Data\VW072724\
Data File : VW029772.D
Acq On : 27 Jul 2024 11:11
Operator : SY/MD
Sample : P3361-13
Misc : 5.00g/10mL/MSVOA_W/SOIL/B
ALS Vial : 8 Sample Multiplier: 1

Instrument :
MSVOA_W
ClientSampleId :
E20P3

Quant Method : Z:\voasrv\HPCHEM1\MSVOA_W\Method\SFAMWLM072424SMA.M
Quant Title : SFAM01.0

TIC Library : C:\Database\NIST0.L
TIC Integration Parameters: LSCINT.P

TIC Top Hit name	RT	EstConc	Units	Response	#	RT	Resp	Conc
------------------	----	---------	-------	----------	---	----	------	------
