

Data Path : Z:\voasrv\HPCHEM1\MSVOA_W\Data\W072822\
 Data File : W024124.D
 Acq On : 28 Jul 2022 16:06
 Operator : SY/VA
 Sample : VI BLK
 Mi sc : 4.94g/10mL/MSVOA_W/SOIL
 ALS Vial : 1 Sample Multiplier: 1

Instrument :
 MSVOA_W
 ClientSampleId :

Quant Time: Jul 29 01:17:51 2022
 Quant Method : Z:\voasrv\HPCHEM1\MSVOA_W\Method\SFAMLM072522SMA.M
 Quant Title : SFAM01.0
 QLast Update : Fri Jul 29 01:16:23 2022
 Response via : Initial Calibration

Compound	R.T.	QI on	Response	Conc	Units	Dev(Min)

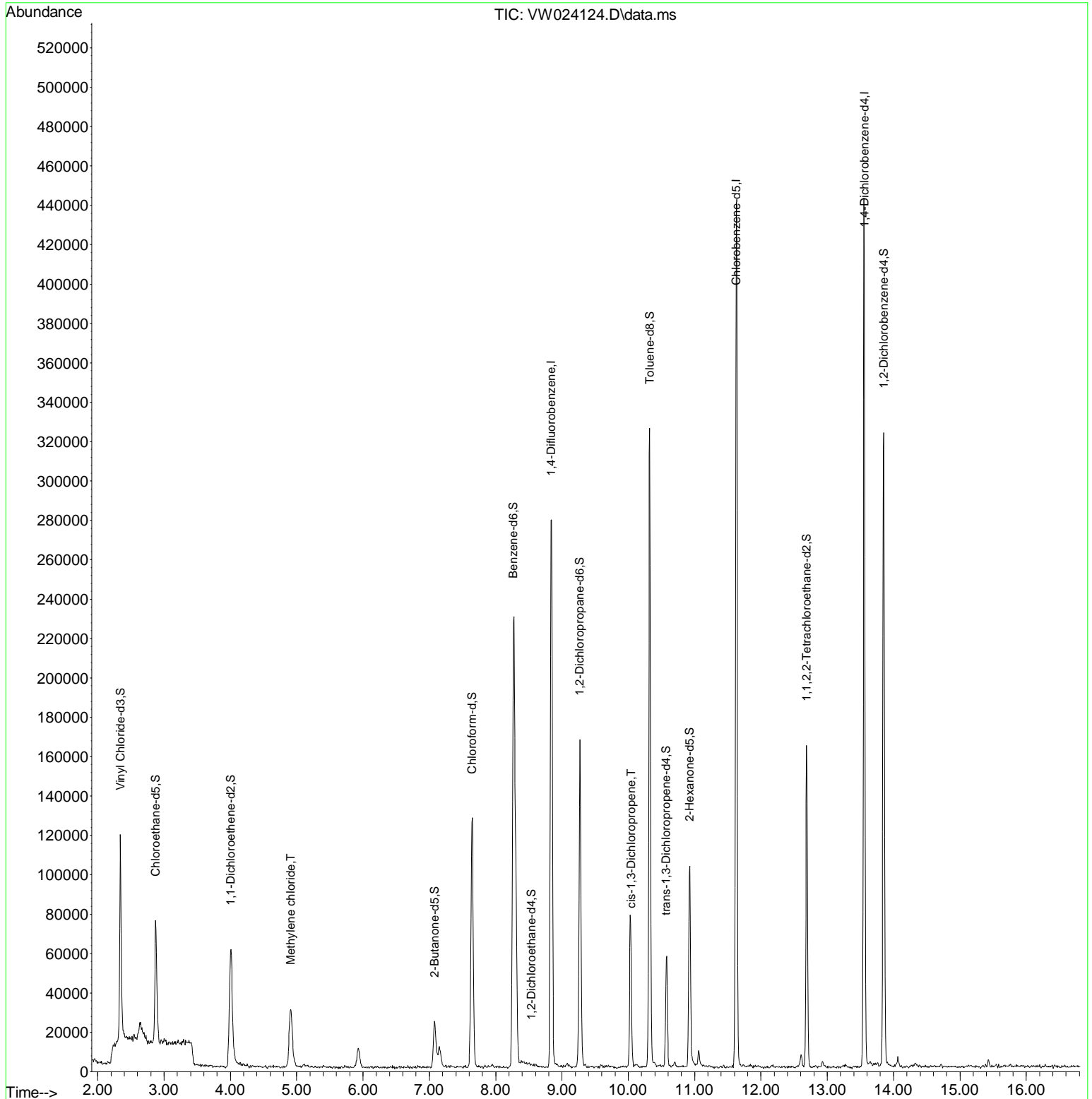
Internal Standards						
1) 1,4-Difluorobenzene	8.835	114	225967	25.000	ug/L	0.00
28) Chlorobenzene-d5	11.628	117	234467	25.000	ug/L	0.00
58) 1,4-Dichlorobenzene-d4	13.560	152	104648	25.000	ug/L	0.00
System Monitoring Compounds						
4) Vinyl Chloride-d3	2.343	65	110192	22.750	ug/L	0.00
Spike Amount	25.000	Range 30 - 150	Recovery =	91.000%		
7) Chloroethane-d5	2.873	69	73152	22.352	ug/L	0.00
Spike Amount	25.000	Range 30 - 150	Recovery =	89.400%		
11) 1,1-Dichloroethene-d2	4.007	63	61961	14.528	ug/L	0.00
Spike Amount	25.000	Range 45 - 110	Recovery =	58.120%		
21) 2-Butanone-d5	7.080	46	39898	46.349	ug/L	0.00
Spike Amount	50.000	Range 20 - 135	Recovery =	92.700%		
24) Chloroform-d	7.647	84	126057	20.292	ug/L	0.00
Spike Amount	25.000	Range 40 - 150	Recovery =	81.160%		
26) 1,2-Dichloroethane-d4	8.537	65	96	0.027	ug/L	0.23
Spike Amount	25.000	Range 70 - 130	Recovery =	0.120%#		
32) Benzene-d6	8.268	84	223830	20.551	ug/L	0.00
Spike Amount	25.000	Range 20 - 135	Recovery =	82.200%		
36) 1,2-Dichloropropane-d6	9.268	67	71965	20.948	ug/L	0.00
Spike Amount	25.000	Range 70 - 120	Recovery =	83.800%		
41) Toluene-d8	10.323	98	206326	18.942	ug/L	0.00
Spike Amount	25.000	Range 30 - 130	Recovery =	75.760%		
43) trans-1,3-Dichloropropene	10.573	79	28888	18.965	ug/L	0.00
Spike Amount	25.000	Range 30 - 135	Recovery =	75.880%		
47) 2-Hexanone-d5	10.927	63	30069	41.867	ug/L	0.00
Spike Amount	50.000	Range 20 - 135	Recovery =	83.740%		
56) 1,1,2,2-Tetrachloroethane	12.688	84	78325	19.759	ug/L	0.00
Spike Amount	25.000	Range 45 - 120	Recovery =	79.040%		
66) 1,2-Dichlorobenzene-d4	13.853	152	74594	22.010	ug/L	0.00
Spike Amount	25.000	Range 75 - 120	Recovery =	88.040%		
Target Compounds						
16) Methylene chloride	4.909	84	23210	6.748	ug/L	100
39) cis-1,3-Dichloropropene	10.043	75	2783	0.558	ug/L	88

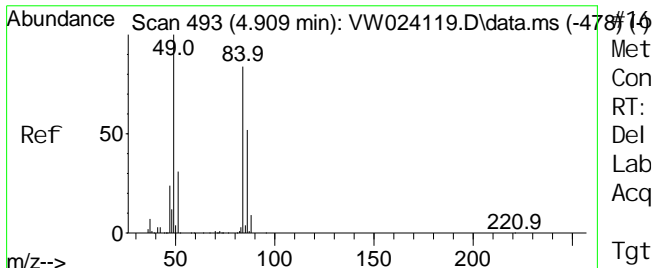
(#) = qualifier out of range (m) = manual integration (+) = signals summed

Data Path : Z:\voasrv\HPCHEM1\MSVOA_W\Data\VW072822\
 Data File : VW024124.D
 Acq On : 28 Jul 2022 16:06
 Operator : SY/VA
 Sample : VI BLK
 Mi sc : 4.94g/10mL/MSVOA_W/SOIL
 ALS Vial : 1 Sample Multiplier: 1

Instrument :
 MSVOA_W
 ClientSampleId :

Quant Time: Jul 29 01:17:51 2022
 Quant Method : Z:\voasrv\HPCHEM1\MSVOA_W\Method\SFAMLM072522SMA.M
 Quant Title : SFAM01.0
 QLast Update : Fri Jul 29 01:16:23 2022
 Response via : Initial Calibration

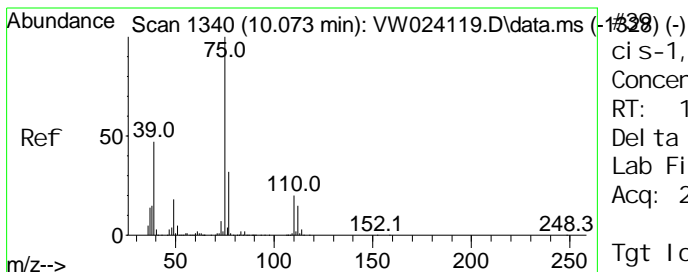
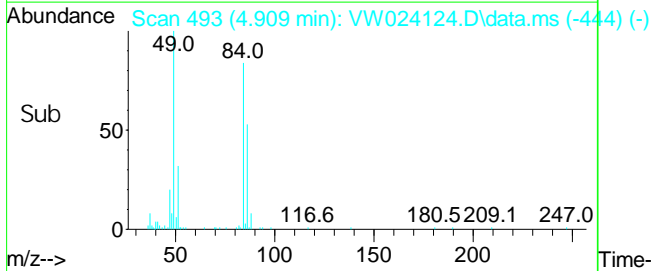
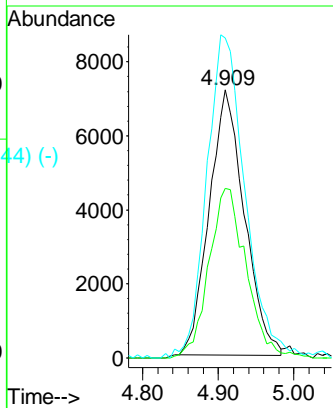
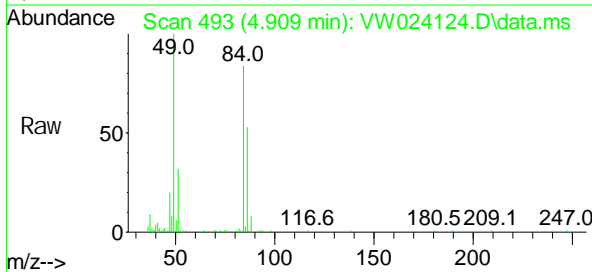




Methyl ene chl ori de
 Concen: 6.748 ug/L
 RT: 4.909 min Scan# 416
 Del ta R. T. 0.000 min
 Lab File: VW024124.D
 Acq: 28 Jul 2022 16:06

Instrument : MSVOA_W
 ClientSampleId :

Tgt Ion: 84 Resp: 23210
 Ion Ratio Lower Upper
 84 100
 86 63.3 44.7 83.1
 49 119.4 83.7 155.4



ci s-1, 3-Di chl oropropene
 Concen: 0.558 ug/L
 RT: 10.043 min Scan# 1335
 Del ta R. T. -0.030 min
 Lab File: VW024124.D
 Acq: 28 Jul 2022 16:06

Tgt Ion: 75 Resp: 2783
 Ion Ratio Lower Upper
 75 100
 77 37.9 21.8 40.6

