

Data Path : Z:\VOASRV\HPCHEM1\MSVOA W\DATA\VW073119\
 Data File : VW011586.D
 Acq On : 31 Jul 2019 14:45
 Operator : SY/VA
 Sample : K4070-18
 Misc : 4.99G/10ML/MSVOA W/SOIL
 ALS Vial : 8 Sample Multiplier: 1

Instrument :
 MSVOA_W
 ClientSampleId :
 DB9E9

Integration Parameters: LSCINT.P

Integrator: RTE
 Smoothing : OFF
 Sampling : 1
 Start Thrs: 0.2
 Stop Thrs : 0

Filtering: 5
 Min Area: 0 % of largest Peak
 Max Peaks: 100
 Peak Location: TOP

If leading or trailing edge < 100 prefer < Baseline drop else tangent >
 Peak separation: 5

Method : Z:\VOASRV\HPCHEM1\MSVOA_W\METHOD\SOM2WLM073019S.M
 Title : VOC Analysis

Signal : TIC

peak #	R.T. min	first scan	max scan	last scan	PK TY	peak height	corr. area	corr. % max.	% of total
1	2.154	37	41	48	rBV2	4729	9066	0.58%	0.084%
2	2.349	67	73	84	rBV	111067	196521	12.64%	1.811%
3	2.892	154	162	175	rVB	65999	169820	10.92%	1.565%
4	3.263	218	223	224	rBV5	966	1640	0.11%	0.015%
5	3.483	256	259	264	rBV4	652	981	0.06%	0.009%
6	3.696	290	294	295	rBV3	568	890	0.06%	0.008%
7	3.727	295	299	300	rVB3	680	699	0.04%	0.006%
8	3.855	314	320	329	rBV5	2185	6532	0.42%	0.060%
9	4.019	335	347	361	rBV	173531	556768	35.81%	5.131%
10	4.391	398	408	409	rBV3	2374	5055	0.33%	0.047%
11	4.733	461	464	467	rVB3	672	725	0.05%	0.007%
12	4.769	467	470	474	rBV2	507	706	0.05%	0.007%
13	4.861	479	485	486	rBV4	1017	1532	0.10%	0.014%
14	4.922	486	495	509	rVB2	7722	27745	1.78%	0.256%
15	5.117	524	527	528	rBV3	542	730	0.05%	0.007%
16	5.531	589	595	596	rBV2	419	571	0.04%	0.005%
17	5.787	634	637	641	rVB4	714	982	0.06%	0.009%
18	5.934	656	661	662	rBV3	1131	1438	0.09%	0.013%
19	6.519	755	757	760	rVB2	554	680	0.04%	0.006%
20	6.598	767	770	774	rBV3	436	837	0.05%	0.008%
21	6.647	776	778	781	rVB2	633	662	0.04%	0.006%
22	6.702	781	787	789	rVB3	642	933	0.06%	0.009%
23	6.897	816	819	822	rBV4	415	671	0.04%	0.006%
24	7.074	838	848	854	rBV2	61810	171299	11.02%	1.579%
25	7.287	880	883	886	rVB4	638	777	0.05%	0.007%
26	7.647	931	942	954	rBV	246462	609364	39.19%	5.615%
27	7.726	954	955	958	rVB3	992	789	0.05%	0.007%
28	7.946	986	991	993	rBV3	1142	1954	0.13%	0.018%
29	8.061	1006	1010	1013	rBV2	535	654	0.04%	0.006%
30	8.275	1035	1045	1061	rBV2	526889	1554829	100.00%	14.328%
31	8.543	1088	1089	1094	rBV3	931	1148	0.07%	0.011%
32	8.842	1129	1138	1149	rVV	458151	894442	57.53%	8.242%
33	8.964	1157	1158	1163	rVB3	896	1028	0.07%	0.009%
34	9.092	1168	1179	1187	rVV	44799	95958	6.17%	0.884%

Data Path : Z:\VOASRV\HPCHEM1\MSVOA W\DATA\VW073119\
 Data File : VW011586.D
 Acq On : 31 Jul 2019 14:45
 Operator : SY/VA
 Sample : K4070-18
 Misc : 4.99G/10ML/MSVOA W/SOIL
 ALS Vial : 8 Sample Multiplier: 1

Instrument :
 MSVOA_W
 ClientSampleId :
 DB9E9

Integration Parameters: LSCINT.P

Integrator: RTE
 Smoothing : OFF
 Sampling : 1
 Start Thrs: 0.2
 Stop Thrs : 0

Filtering: 5
 Min Area: 0 % of largest Peak
 Max Peaks: 100
 Peak Location: TOP

If leading or trailing edge < 100 prefer < Baseline drop else tangent >
 Peak separation: 5

Method : Z:\VOASRV\HPCHEM1\MSVOA_W\METHOD\SOM2WLM073019S.M
 Title : VOC Analysis

35	9.275	1199	1209	1219	rBV	375545	744770	47.90%	6.863%
36	9.403	1229	1230	1237	rVV6	1106	1716	0.11%	0.016%
37	9.592	1258	1261	1266	rBV4	542	783	0.05%	0.007%
38	9.659	1266	1272	1278	rVB5	1609	3766	0.24%	0.035%
39	9.884	1308	1309	1313	rVB3	815	872	0.06%	0.008%
40	10.037	1323	1334	1343	rBV	193117	357477	22.99%	3.294%
41	10.213	1359	1363	1366	rBV3	1629	2384	0.15%	0.022%
42	10.323	1372	1381	1389	rBV	699303	1230064	79.11%	11.335%
43	10.494	1405	1409	1410	rBV2	847	1110	0.07%	0.010%
44	10.579	1416	1423	1431	rBV	132229	227460	14.63%	2.096%
45	10.701	1437	1443	1450	rBV	19716	36415	2.34%	0.336%
46	10.823	1460	1463	1464	rBV3	616	621	0.04%	0.006%
47	10.927	1472	1480	1494	rBV	221927	382664	24.61%	3.526%
48	11.067	1496	1503	1510	rVB	26954	47925	3.08%	0.442%
49	11.177	1515	1521	1528	rBV8	2088	4156	0.27%	0.038%
50	11.439	1553	1564	1571	rBV2	6125	13364	0.86%	0.123%
51	11.628	1588	1595	1604	rBV	600182	1034145	66.51%	9.530%
52	11.725	1609	1611	1615	rVB3	751	1058	0.07%	0.010%
53	11.835	1627	1629	1634	rVV5	945	1314	0.08%	0.012%
54	12.164	1676	1683	1685	rBV6	1252	1793	0.12%	0.017%
55	12.237	1691	1695	1698	rBV5	590	1040	0.07%	0.010%
56	12.341	1708	1712	1717	rBV3	1524	2665	0.17%	0.025%
57	12.469	1727	1733	1739	rVB3	3509	5935	0.38%	0.055%
58	12.609	1748	1756	1762	rVB	23217	39397	2.53%	0.363%
59	12.695	1762	1770	1777	rBV	275144	451299	29.03%	4.159%
60	12.756	1777	1780	1787	rVB5	1176	2275	0.15%	0.021%
61	12.932	1803	1809	1815	rBV	15458	24942	1.60%	0.230%
62	13.036	1824	1826	1830	rVB2	1257	1507	0.10%	0.014%
63	13.079	1830	1833	1836	rBV3	913	1353	0.09%	0.012%
64	13.195	1850	1852	1855	rVV2	1026	941	0.06%	0.009%
65	13.256	1857	1862	1864	rBV4	775	1512	0.10%	0.014%
66	13.298	1864	1869	1879	rVB7	3867	8041	0.52%	0.074%
67	13.402	1879	1886	1894	rBV6	5171	11244	0.72%	0.104%
68	13.481	1894	1899	1900	rBV4	1272	2103	0.14%	0.019%
69	13.505	1900	1903	1905	rVV3	1152	1190	0.08%	0.011%
70	13.560	1905	1912	1924	rVV	548354	892384	57.39%	8.223%
71	13.762	1939	1945	1948	rBV7	3019	5046	0.32%	0.046%

Data Path : Z:\VOASRV\HPCHEM1\MSVOA W\DATA\VW073119\
 Data File : VW011586.D
 Acq On : 31 Jul 2019 14:45
 Operator : SY/VA
 Sample : K4070-18
 Misc : 4.99G/10ML/MSVOA W/SOIL
 ALS Vial : 8 Sample Multiplier: 1

Instrument :
 MSVOA_W
 ClientSampleId :
 DB9E9

Integration Parameters: LSCINT.P

Integrator: RTE
 Smoothing : OFF Filtering: 5
 Sampling : 1 Min Area: 0 % of largest Peak
 Start Thrs: 0.2 Max Peaks: 100
 Stop Thrs : 0 Peak Location: TOP

If leading or trailing edge < 100 prefer < Baseline drop else tangent >
 Peak separation: 5

Method : Z:\VOASRV\HPCHEM1\MSVOA_W\METHOD\SOM2WLM073019S.M
 Title : VOC Analysis

72	13.853	1953	1960	1967	rBV	549934	892895	57.43%	8.228%
73	14.018	1985	1987	1988	rVV2	1207	920	0.06%	0.008%
74	14.072	1991	1996	2002	rVB	10876	16690	1.07%	0.154%
75	14.200	2014	2017	2020	rVB3	1268	1650	0.11%	0.015%
76	14.261	2025	2027	2030	rBV4	544	848	0.05%	0.008%
77	14.329	2030	2038	2043	rBV2	17428	29872	1.92%	0.275%
78	14.493	2062	2065	2067	rBV3	708	831	0.05%	0.008%
79	14.530	2067	2071	2076	rVB5	1615	2903	0.19%	0.027%
80	14.627	2082	2087	2091	rBV6	2025	3284	0.21%	0.030%
81	14.725	2098	2103	2107	rVB8	1388	2290	0.15%	0.021%
82	14.755	2107	2108	2112	rVB3	691	654	0.04%	0.006%
83	14.792	2112	2114	2117	rBV4	654	1047	0.07%	0.010%
84	14.871	2125	2127	2131	rVB2	659	660	0.04%	0.006%
85	14.908	2131	2133	2136	rBV3	458	685	0.04%	0.006%
86	15.176	2174	2177	2181	rVB6	1160	2033	0.13%	0.019%
87	15.438	2215	2220	2226	rVB2	11321	18838	1.21%	0.174%
88	15.499	2226	2230	2233	rVB4	929	1299	0.08%	0.012%
89	15.761	2271	2273	2275	rBV3	841	786	0.05%	0.007%
90	15.944	2300	2303	2305	rBV3	668	793	0.05%	0.007%
91	16.084	2324	2326	2331	rBV5	659	810	0.05%	0.007%
92	16.151	2335	2337	2340	rBV2	602	677	0.04%	0.006%
93	16.304	2360	2362	2365	rBV4	574	583	0.04%	0.005%
94	16.334	2365	2367	2370	rVB3	1060	973	0.06%	0.009%
95	16.365	2370	2372	2373	rBV	1053	872	0.06%	0.008%
96	16.450	2384	2386	2387	rVB2	922	561	0.04%	0.005%
97	16.474	2387	2390	2391	rBV3	597	692	0.04%	0.006%
98	16.505	2393	2395	2399	rVB4	762	851	0.05%	0.008%
99	16.670	2420	2422	2424	rVB3	884	866	0.06%	0.008%
100	16.712	2427	2429	2431	rBV3	658	719	0.05%	0.007%

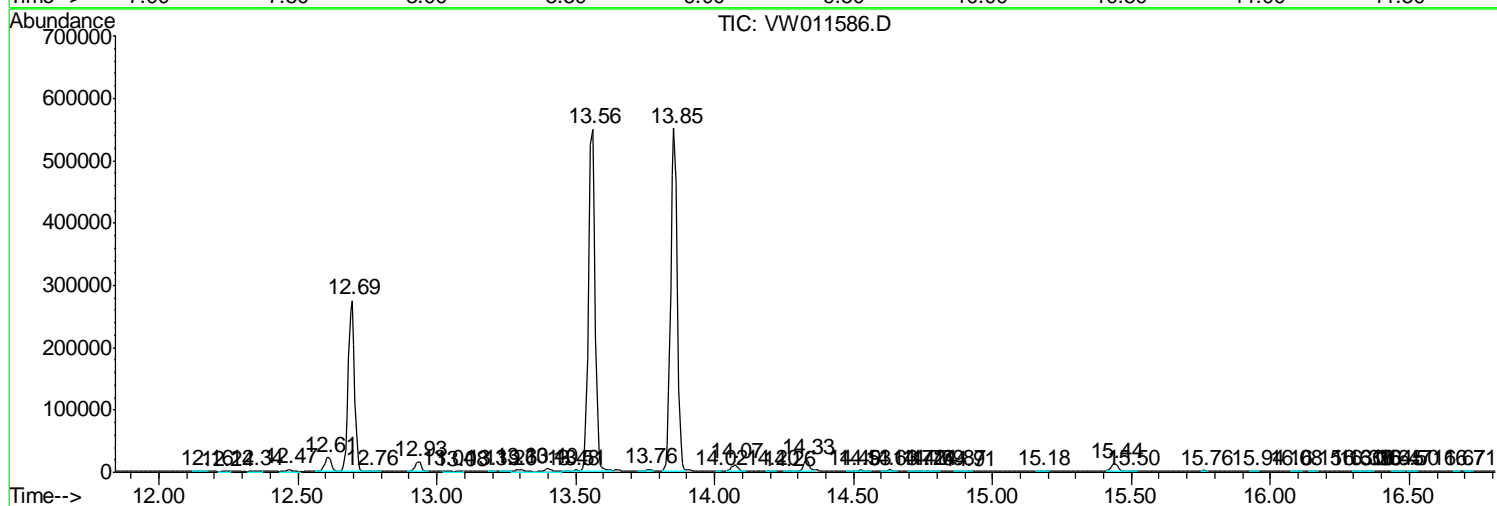
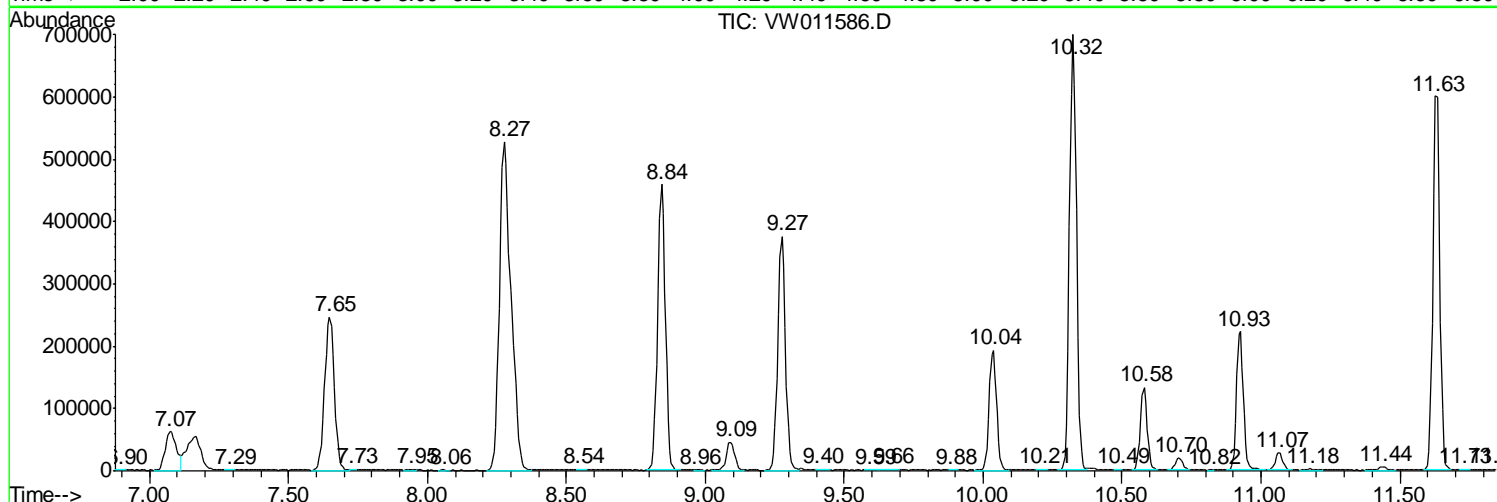
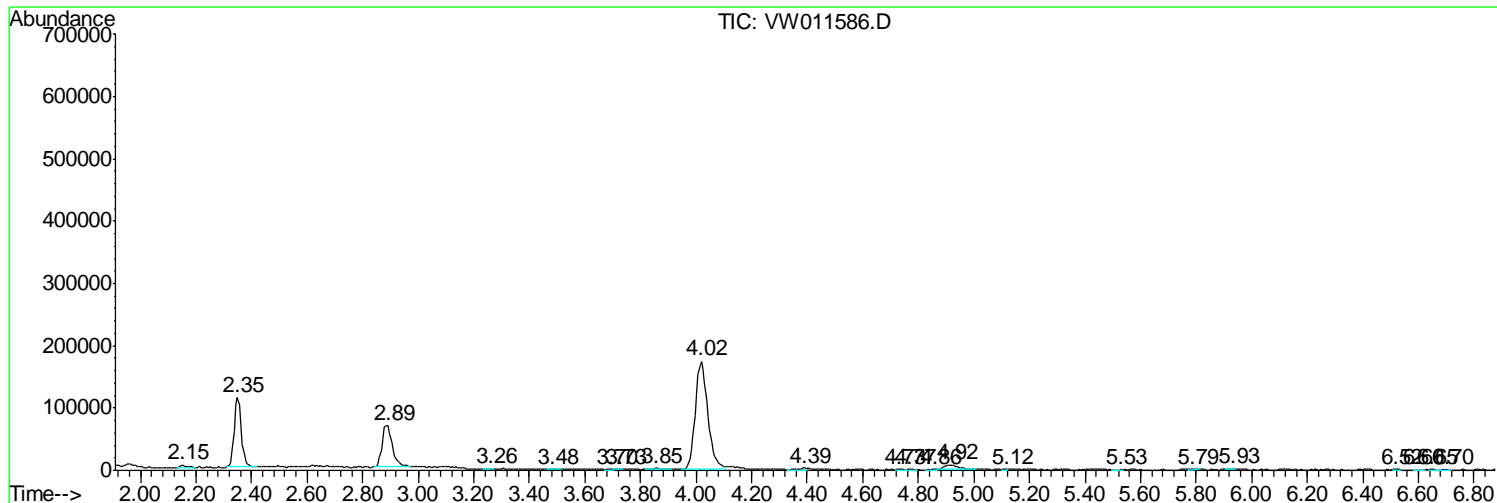
Sum of corrected areas: 10851739

Data Path : Z:\VOASRV\HPCHEM1\MSVOA W\DATA\VW073119\
 Data File : VW011586.D
 Acq On : 31 Jul 2019 14:45
 Operator : SY/VA
 Sample : K4070-18
 Misc : 4.99G/10ML/MSVOA W/SOIL
 ALS Vial : 8 Sample Multiplier: 1

Instrument :
 MSVOA_W
 ClientSampleId :
 DB9E9

Quant Method : Z:\VOASRV\HPCHEM1\MSVOA_W\METHOD\SOM2WLM073019S.M
 Quant Title : VOC Analysis

TIC Library : C:\DATABASE\NIST11.L
 TIC Integration Parameters: LSCINT.P



Data Path : Z:\VOASRV\HPCHEM1\MSVOA_W\DATA\VW073119\
Data File : VW011586.D
Acq On : 31 Jul 2019 14:45
Operator : SY/VA
Sample : K4070-18
Misc : 4.99G/10ML/MSVOA_W/SOIL
ALS Vial : 8 Sample Multiplier: 1

Instrument :
MSVOA_W
ClientSampleId :
DB9E9

Quant Method : Z:\VOASRV\HPCHEM1\MSVOA_W\METHOD\SOM2WLM073019S.M
Quant Title : VOC Analysis

TIC Library : C:\DATABASE\NIST11.L
TIC Integration Parameters: LSCINT.P

No Library Search Compounds Detected

Data Path : Z:\VOASRV\HPCHEM1\MSVOA_W\DATA\VW073119\
Data File : VW011586.D
Acq On : 31 Jul 2019 14:45
Operator : SY/VA
Sample : K4070-18
Misc : 4.99G/10ML/MSVOA_W/SOIL
ALS Vial : 8 Sample Multiplier: 1

Instrument :
MSVOA_W
ClientSampleId :
DB9E9

Quant Method : Z:\VOASRV\HPCHEM1\MSVOA_W\METHOD\SOM2WLM073019S.M
Quant Title : VOC Analysis

TIC Library : C:\DATABASE\NIST11.L
TIC Integration Parameters: LSCINT.P

TIC Top Hit name	RT	EstConc	Units	Response	--Internal Standard--			
					#	RT	Resp	Conc
