

Data Path : Z:\VOASRV\HPCHEM1\MSVOA W\DATA\VW080119\  
 Data File : VW011605.D  
 Acq On : 01 Aug 2019 17:35  
 Operator : SY/VA  
 Sample : K4116-03  
 Misc : 4.85G/10ML/MSVOA W/SOIL  
 ALS Vial : 1 Sample Multiplier: 1

**Instrument :**  
 MSVOA\_W  
**ClientSampled :**  
 JLLD2

**Manual Integrations**  
**APPROVED**  
 MMdadoda  
 8/3/2019 12:14:30 AM

Quant Time: Aug 02 05:58:30 2019  
 Quant Method : Z:\VOASRV\HPCHEM1\MSVOA\_W\METHOD\SOM2WLM073019S.M  
 Quant Title : VOC Analysis  
 QLast Update : Fri Aug 02 04:38:10 2019  
 Response via : Initial Calibration

Internal Standards	R.T.	QIon	Response	Conc	Units	Dev(Min)
1) 1,4-Difluorobenzene	8.84	114	243164	25.00	ug/L	0.00
28) Chlorobenzene-d5	11.63	117	192999	25.00	ug/L	0.00
60) 1,4-Dichlorobenzene-d4	13.56	152	71345	25.00	ug/L	0.00

System Monitoring Compounds

4) Vinyl Chloride-d3	2.35	65	90219	26.35	ug/L	0.00
Spiked Amount	25.000	Range	30 - 150	Recovery	=	105.40%
7) Chloroethane-d5	2.88	69	66773	27.07	ug/L	0.00
Spiked Amount	25.000	Range	30 - 150	Recovery	=	108.28%
10) 1,1-Dichloroethene-d2	4.02	63	150112	19.12	ug/L	0.00
Spiked Amount	25.000	Range	45 - 110	Recovery	=	76.48%
20) 2-Butanone-d5	7.07	46	87770	56.93	ug/L	0.00
Spiked Amount	50.000	Range	20 - 135	Recovery	=	113.86%
24) Chloroform-d	7.65	84	176524	26.43	ug/L	0.00
Spiked Amount	25.000	Range	40 - 150	Recovery	=	105.72%
26) 1,2-Dichloroethane-d4	8.30	65	116645	29.51	ug/L	0.00
Spiked Amount	25.000	Range	70 - 130	Recovery	=	118.04%
29) Benzene-d6	8.27	84	351779	28.98	ug/L	0.00
Spiked Amount	25.000	Range	20 - 135	Recovery	=	115.92%
33) 1,2-Dichloropropane-d6	9.27	67	120800	30.83	ug/L	0.00
Spiked Amount	25.000	Range	70 - 120	Recovery	=	123.32%#
37) Toluene-d8	10.32	98	281404	26.12	ug/L	0.00
Spiked Amount	25.000	Range	30 - 130	Recovery	=	104.48%
38) trans-1,3-Dichloropropene-	10.58	79	44759	26.07	ug/L	0.00
Spiked Amount	25.000	Range	30 - 135	Recovery	=	104.28%
39) 2-Hexanone-d5	10.93	63	57778	63.14	ug/L	0.00
Spiked Amount	50.000	Range	20 - 135	Recovery	=	126.28%
48) 1,1,2,2-Tetrachloroethane-	12.69	84	93663	28.79	ug/L	0.00
Spiked Amount	25.000	Range	45 - 120	Recovery	=	115.16%
61) 1,2-Dichlorobenzene-d4	13.85	152	71383	25.96	ug/L	0.00
Spiked Amount	25.000	Range	75 - 120	Recovery	=	103.84%

Target Compounds					Ovalue
13) Acetone	4.12	43	5617	3.402 ug/L	94
16) Methylene chloride	4.91	84	8766m	2.310 ug/L	

(#) = qualifier out of range (m) = manual integration (+) = signals summed

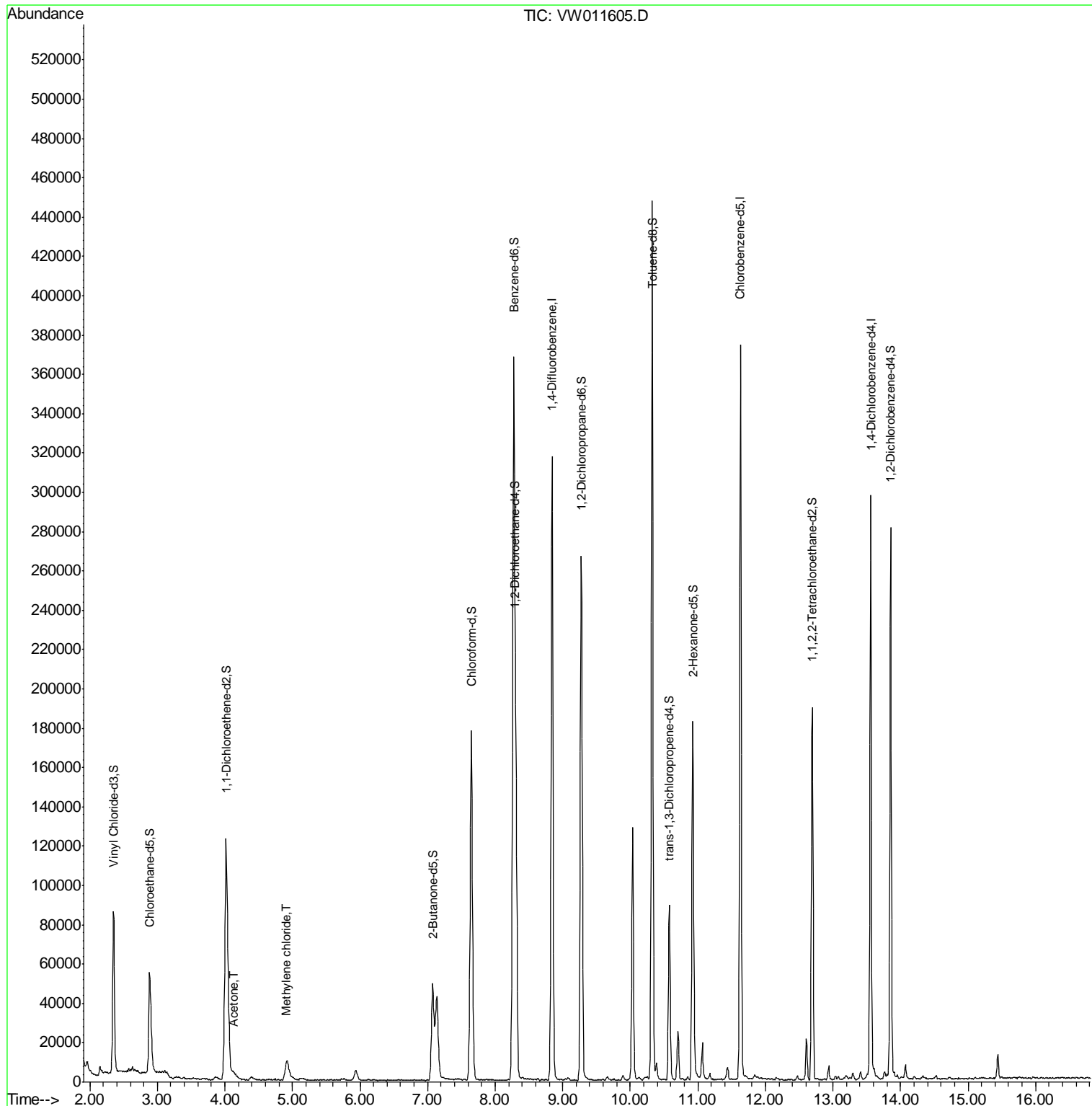
Data Path : Z:\VOASRV\HPCHEM1\MSVOA W\DATA\VW080119\  
 Data File : VW011605.D  
 Acq On : 01 Aug 2019 17:35  
 Operator : SY/VA  
 Sample : K4116-03  
 Misc : 4.85G/10ML/MSVOA W/SOIL  
 ALS Vial : 1 Sample Multiplier: 1

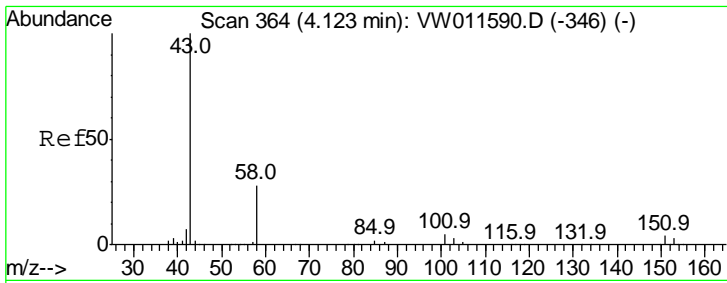
Instrument :  
 MSVOA\_W  
 ClientSampled :  
 JLLD2

Manual Integrations  
 APPROVED

MMDadoda  
 8/3/2019 12:14:30 AM

Quant Time: Aug 02 05:58:30 2019  
 Quant Method : Z:\VOASRV\HPCHEM1\MSVOA\_W\METHOD\SOM2WLM073019S.M  
 Quant Title : VOC Analysis  
 QLast Update : Fri Aug 02 04:38:10 2019  
 Response via : Initial Calibration



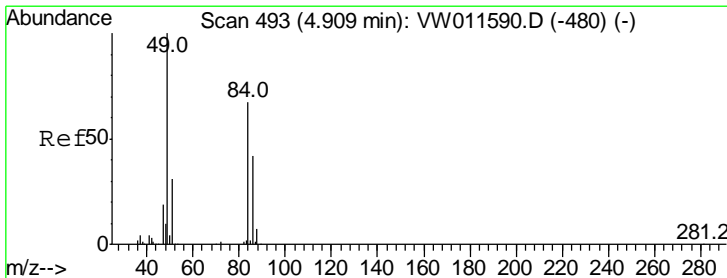
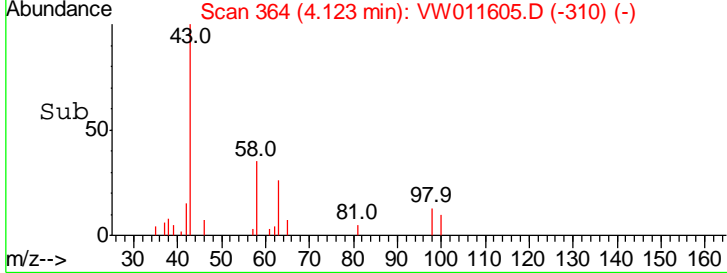
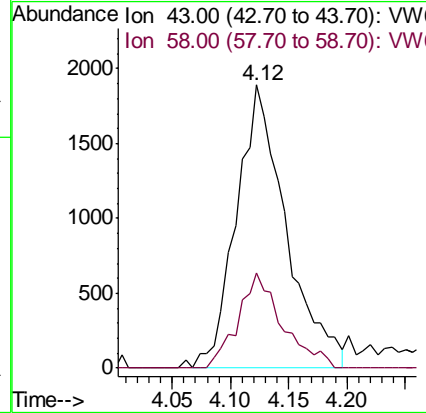
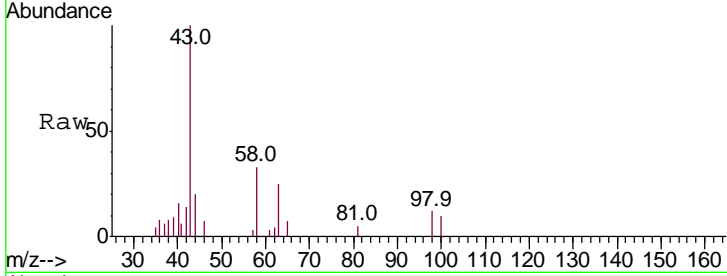


#13  
 Acetone  
 Concen: 3.402 ug/L  
 RT: 4.12 min Scan# 364  
 Delta R.T. -0.00 min  
 Lab File: VW011605.D  
 Acq: 01 Aug 2019 17:35

Instrument : MSVOA\_W  
 ClientSampled : JLLD2

Tgt Ion	Ratio	Lower	Upper
43	100		
58	29.8	0.0	53.4

Manual Integrations  
**APPROVED**  
 MMDadoda  
 8/3/2019 12:14:30 AM



#16  
 Methylene chloride  
 Concen: 2.310 ug/L m  
 RT: 4.91 min Scan# 493  
 Delta R.T. -0.00 min  
 Lab File: VW011605.D  
 Acq: 01 Aug 2019 17:35

Tgt Ion	Ratio	Lower	Upper
84	100		
49	129.6	106.8	198.4
86	58.0	42.8	79.4

