

Data Path : Z:\VOASRV\HPCHEM1\MSVOA W\DATA\VW080219\
 Data File : VW011619.D
 Acq On : 02 Aug 2019 13:32
 Operator : SY/VA
 Sample : K4116-12
 Misc : 4.22G/10ML/MSVOA W/SOIL
 ALS Vial : 1 Sample Multiplier: 1

Instrument :
 MSVOA_W
ClientSampled :
 JLLE4

Manual Integrations
APPROVED
 MMDadoda
 8/6/2019 10:08:58 AM

Quant Time: Aug 03 02:49:43 2019
 Quant Method : Z:\VOASRV\HPCHEM1\MSVOA_W\METHOD\SOM2WLM073019S.M
 Quant Title : VOC Analysis
 QLast Update : Sat Aug 03 02:22:50 2019
 Response via : Initial Calibration

Internal Standards	R.T.	QIon	Response	Conc	Units	Dev(Min)
1) 1,4-Difluorobenzene	8.84	114	290600	25.00	ug/L	0.00
28) Chlorobenzene-d5	11.63	117	236951	25.00	ug/L	0.00
60) 1,4-Dichlorobenzene-d4	13.56	152	88362	25.00	ug/L	0.00

System Monitoring Compounds

4) Vinyl Chloride-d3	2.35	65	91238	22.30	ug/L	0.00
Spiked Amount	25.000	Range	30 - 150	Recovery	=	89.20%
7) Chloroethane-d5	2.89	69	69642	23.63	ug/L	0.00
Spiked Amount	25.000	Range	30 - 150	Recovery	=	94.52%
10) 1,1-Dichloroethene-d2	4.02	63	157858m	16.83	ug/L	0.00
Spiked Amount	25.000	Range	45 - 110	Recovery	=	67.32%
20) 2-Butanone-d5	7.07	46	84087	45.64	ug/L	0.00
Spiked Amount	50.000	Range	20 - 135	Recovery	=	91.28%
24) Chloroform-d	7.65	84	187014	23.43	ug/L	0.00
Spiked Amount	25.000	Range	40 - 150	Recovery	=	93.72%
26) 1,2-Dichloroethane-d4	8.31	65	117242	24.82	ug/L	0.00
Spiked Amount	25.000	Range	70 - 130	Recovery	=	99.28%
29) Benzene-d6	8.27	84	377717	25.35	ug/L	0.00
Spiked Amount	25.000	Range	20 - 135	Recovery	=	101.40%
33) 1,2-Dichloropropane-d6	9.27	67	127974	26.61	ug/L	0.00
Spiked Amount	25.000	Range	70 - 120	Recovery	=	106.44%
37) Toluene-d8	10.32	98	308883	23.36	ug/L	0.00
Spiked Amount	25.000	Range	30 - 130	Recovery	=	93.44%
38) trans-1,3-Dichloropropene-	10.58	79	47740	22.64	ug/L	0.00
Spiked Amount	25.000	Range	30 - 135	Recovery	=	90.56%
39) 2-Hexanone-d5	10.93	63	54242	48.28	ug/L	0.00
Spiked Amount	50.000	Range	20 - 135	Recovery	=	96.56%
48) 1,1,2,2-Tetrachloroethane-	12.69	84	90941	22.77	ug/L	0.00
Spiked Amount	25.000	Range	45 - 120	Recovery	=	91.08%
61) 1,2-Dichlorobenzene-d4	13.85	152	77144	22.66	ug/L	0.00
Spiked Amount	25.000	Range	75 - 120	Recovery	=	90.64%

Target Compounds					Ovalue
13) Acetone	4.12	43	35450	17.964	ug/L 99
21) 2-Butanone	7.18	43	17035	6.885	ug/L 97

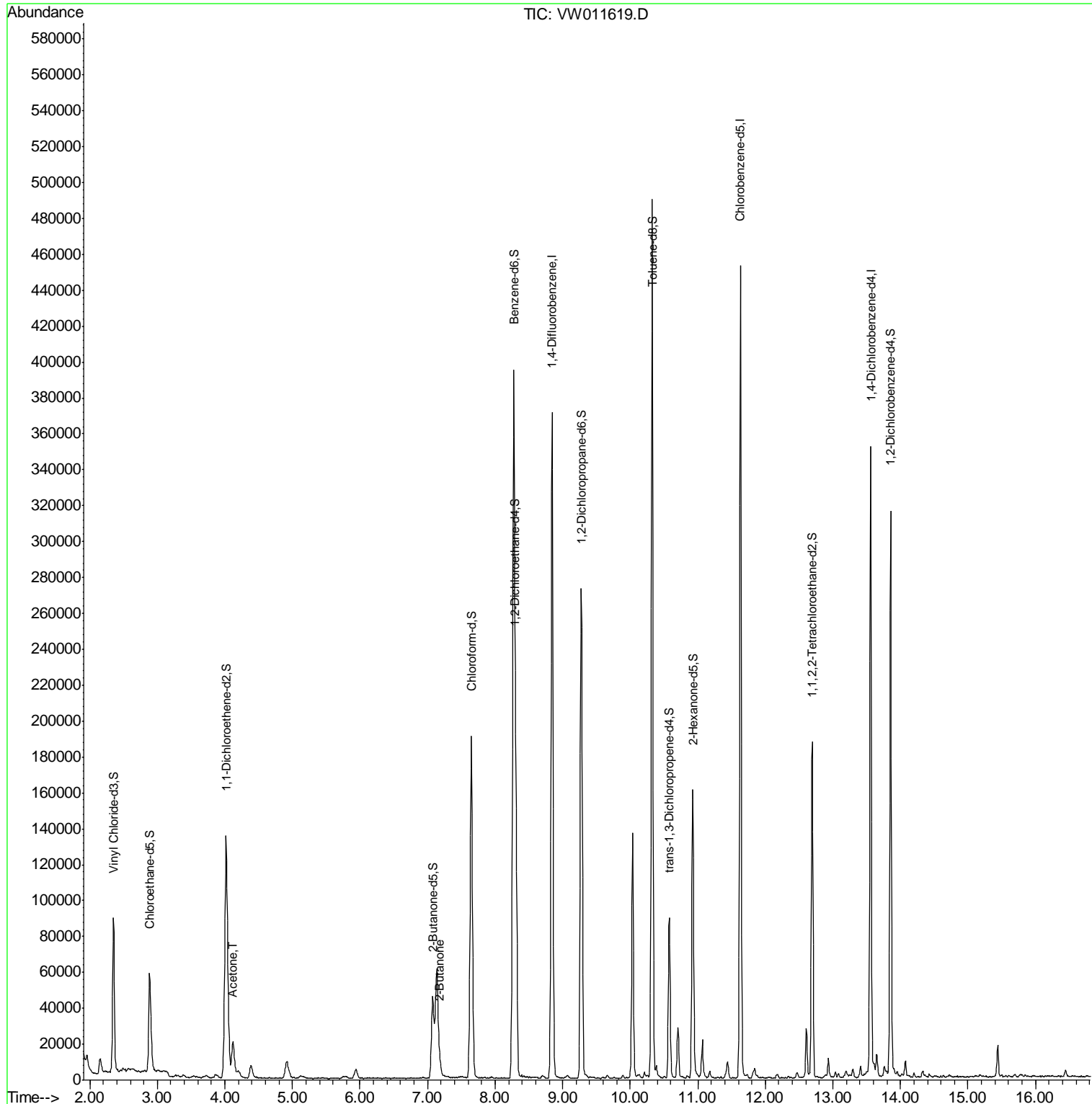
(#) = qualifier out of range (m) = manual integration (+) = signals summed

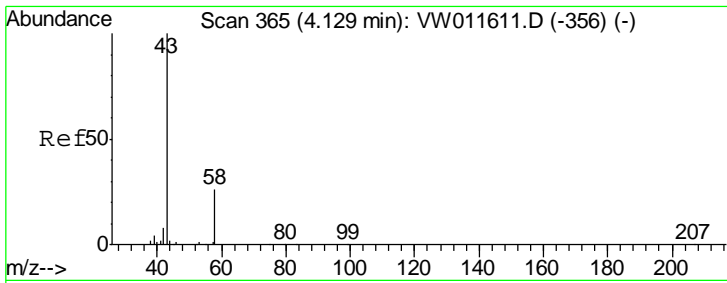
Data Path : Z:\VOASRV\HPCHEM1\MSVOA W\DATA\VW080219\
 Data File : VW011619.D
 Acq On : 02 Aug 2019 13:32
 Operator : SY/VA
 Sample : K4116-12
 Misc : 4.22G/10ML/MSVOA W/SOIL
 ALS Vial : 1 Sample Multiplier: 1

Instrument :
 MSVOA_W
 ClientSampled :
 JLLE4

Manual Integrations
APPROVED
 MMDadoda
 8/6/2019 10:08:58 AM

Quant Time: Aug 03 02:49:43 2019
 Quant Method : Z:\VOASRV\HPCHEM1\MSVOA_W\METHOD\SOM2WLM073019S.M
 Quant Title : VOC Analysis
 QLast Update : Sat Aug 03 02:22:50 2019
 Response via : Initial Calibration





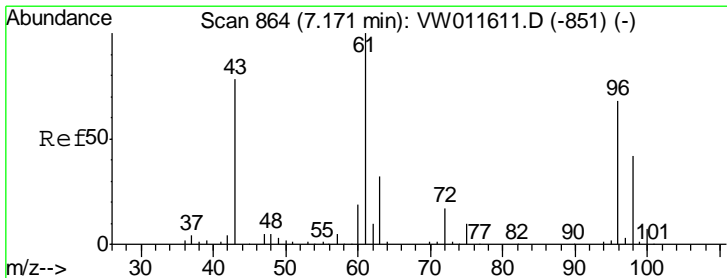
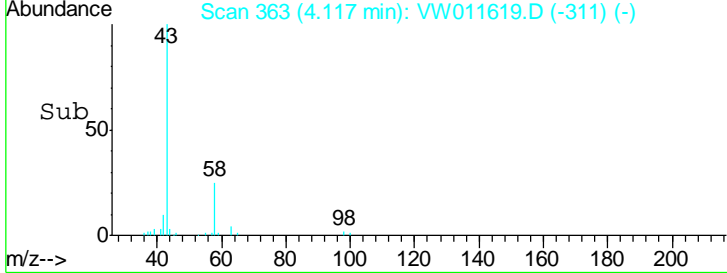
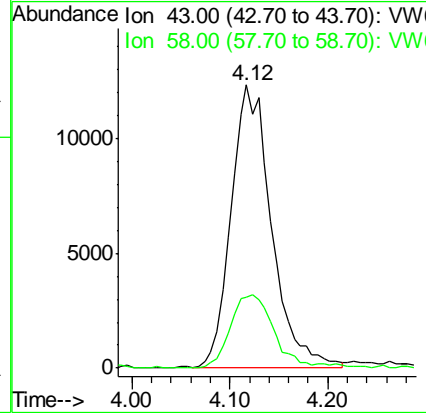
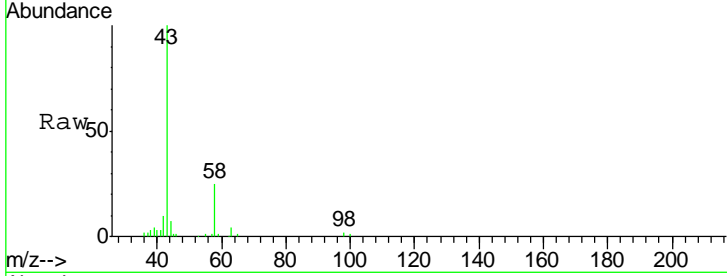
#13
 Acetone
 Concen: 17.964 ug/L
 RT: 4.12 min Scan# 363
 Delta R.T. -0.01 min
 Lab File: VW011619.D
 Acq: 02 Aug 2019 13:32

Instrument :
 MSVOA_W
ClientSampled :
 JLLE4

Tgt Ion	Ratio	Lower	Upper
43	100		
58	27.3	0.0	53.4

Manual Integrations
APPROVED

MMDadoda
 8/6/2019 10:08:58 AM



#21
 2-Butanone
 Concen: 6.885 ug/L
 RT: 7.18 min Scan# 865
 Delta R.T. 0.01 min
 Lab File: VW011619.D
 Acq: 02 Aug 2019 13:32

Tgt Ion	Ratio	Lower	Upper
43	100		
72	20.1	10.7	32.1

