

Data Path : Z:\VOASRV\HPCHEM1\MSVOA W\DATA\VW080219\
 Data File : VW011621.D
 Acq On : 02 Aug 2019 14:24
 Operator : SY/VA
 Sample : K4116-14
 Misc : 4.22G/10ML/MSVOA W/SOIL
 ALS Vial : 1 Sample Multiplier: 1

Instrument :
 MSVOA_W
ClientSampleId :
 JLLE6

Manual Integrations
APPROVED
 MMDadoda
 8/6/2019 10:09:02 AM

Quant Time: Aug 03 02:55:18 2019
 Quant Method : Z:\VOASRV\HPCHEM1\MSVOA_W\METHOD\SOM2WLM073019S.M
 Quant Title : VOC Analysis
 QLast Update : Sat Aug 03 02:22:50 2019
 Response via : Initial Calibration

Internal Standards	R.T.	QIon	Response	Conc	Units	Dev(Min)
1) 1,4-Difluorobenzene	8.84	114	290065	25.00	ug/L	0.00
28) Chlorobenzene-d5	11.63	117	241723	25.00	ug/L	0.00
60) 1,4-Dichlorobenzene-d4	13.56	152	91598	25.00	ug/L	0.00

System Monitoring Compounds

4) Vinyl Chloride-d3	2.35	65	102998	25.22	ug/L	0.00
Spiked Amount	25.000	Range	30 - 150	Recovery	=	100.88%
7) Chloroethane-d5	2.89	69	78090	26.54	ug/L	0.00
Spiked Amount	25.000	Range	30 - 150	Recovery	=	106.16%
10) 1,1-Dichloroethene-d2	4.02	63	176260	18.82	ug/L	0.00
Spiked Amount	25.000	Range	45 - 110	Recovery	=	75.28%
20) 2-Butanone-d5	7.08	46	82807	45.02	ug/L	0.00
Spiked Amount	50.000	Range	20 - 135	Recovery	=	90.04%
24) Chloroform-d	7.65	84	209781	26.33	ug/L	0.00
Spiked Amount	25.000	Range	40 - 150	Recovery	=	105.32%
26) 1,2-Dichloroethane-d4	8.30	65	126889m	26.91	ug/L	0.00
Spiked Amount	25.000	Range	70 - 130	Recovery	=	107.64%
29) Benzene-d6	8.27	84	422636	27.80	ug/L	0.00
Spiked Amount	25.000	Range	20 - 135	Recovery	=	111.20%
33) 1,2-Dichloropropane-d6	9.27	67	141374	28.81	ug/L	0.00
Spiked Amount	25.000	Range	70 - 120	Recovery	=	115.24%
37) Toluene-d8	10.32	98	348977	25.87	ug/L	0.00
Spiked Amount	25.000	Range	30 - 130	Recovery	=	103.48%
38) trans-1,3-Dichloropropene-	10.58	79	51913	24.14	ug/L	0.00
Spiked Amount	25.000	Range	30 - 135	Recovery	=	96.56%
39) 2-Hexanone-d5	10.93	63	52894	46.15	ug/L	0.00
Spiked Amount	50.000	Range	20 - 135	Recovery	=	92.30%
48) 1,1,2,2-Tetrachloroethane-	12.69	84	100664	24.70	ug/L	0.00
Spiked Amount	25.000	Range	45 - 120	Recovery	=	98.80%
61) 1,2-Dichlorobenzene-d4	13.85	152	90500	25.64	ug/L	0.00
Spiked Amount	25.000	Range	75 - 120	Recovery	=	102.56%

Target Compounds					Ovalue
13) Acetone	4.13	43	4635	2.353 ug/L	86

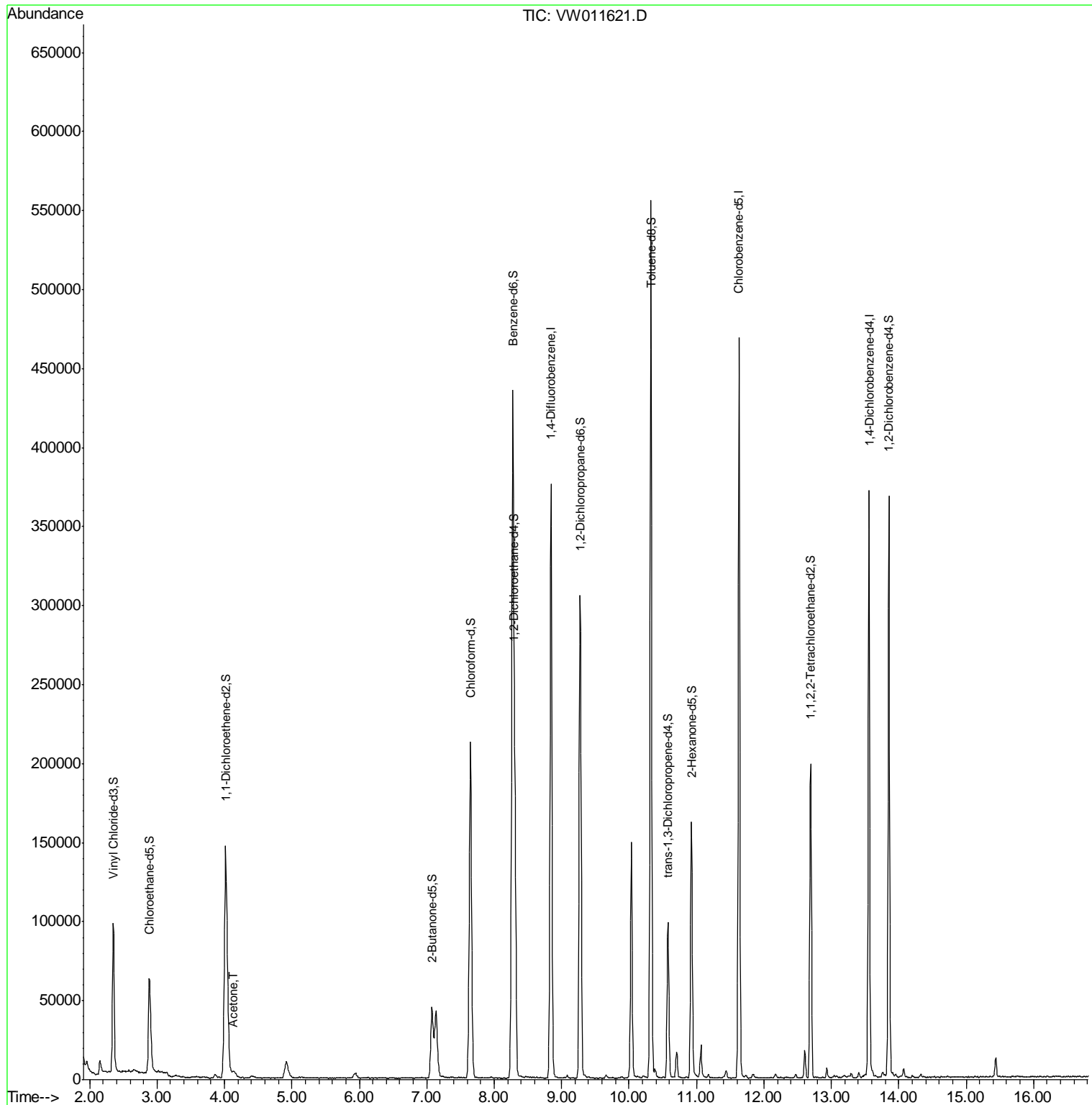
(#) = qualifier out of range (m) = manual integration (+) = signals summed

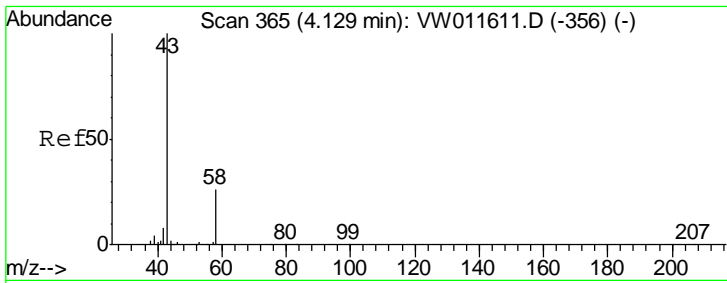
Data Path : Z:\VOASRV\HPCHEM1\MSVOA W\DATA\VW080219\
 Data File : VW011621.D
 Acq On : 02 Aug 2019 14:24
 Operator : SY/VA
 Sample : K4116-14
 Misc : 4.22G/10ML/MSVOA W/SOIL
 ALS Vial : 1 Sample Multiplier: 1

Instrument :
 MSVOA_W
 ClientSampled :
 JLLE6

Manual Integrations
APPROVED
 MMDadoda
 8/6/2019 10:09:02 AM

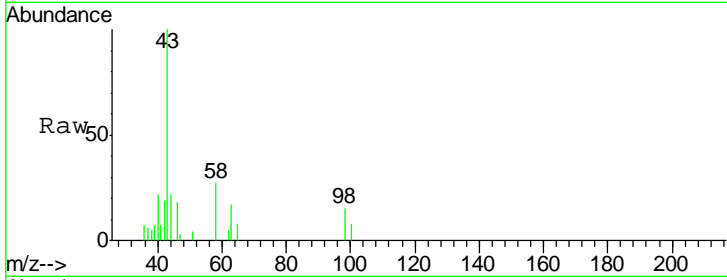
Quant Time: Aug 03 02:55:18 2019
 Quant Method : Z:\VOASRV\HPCHEM1\MSVOA_W\METHOD\SOM2WLM073019S.M
 Quant Title : VOC Analysis
 QLast Update : Sat Aug 03 02:22:50 2019
 Response via : Initial Calibration





#13
 Acetone
 Concen: 2.353 ug/L
 RT: 4.13 min Scan# 365
 Delta R.T. 0.00 min
 Lab File: VW011621.D
 Acq: 02 Aug 2019 14:24

Instrument :
 MSVOA_W
ClientSampled :
 JLLE6



Tot Ion: 43 Resp: 4635
 Ion Ratio Lower Upper
 43 100
 58 19.6 0.0 53.4

Manual Integrations
APPROVED
 MMDadoda
 8/6/2019 10:09:02 AM

