

Data Path : Z:\VOASRV\HPCHEM1\MSVOA W\DATA\VW080219\
 Data File : VW011629.D
 Acq On : 02 Aug 2019 17:53
 Operator : SY/VA
 Sample : K4117-08
 Misc : 5.85G/10ML/MSVOA W/SOIL
 ALS Vial : 1 Sample Multiplier: 1

Instrument :
 MSVOA_W
 ClientSampleId :
 JLLF6

Integration Parameters: LSCINT.P

Integrator: RTE
 Smoothing : OFF
 Sampling : 1
 Start Thrs: 0.2
 Stop Thrs : 0

Filtering: 5
 Min Area: 0 % of largest Peak
 Max Peaks: 100
 Peak Location: TOP

If leading or trailing edge < 100 prefer < Baseline drop else tangent >
 Peak separation: 5

Method : Z:\VOASRV\HPCHEM1\MSVOA_W\METHOD\SOM2WLM073019S.M
 Title : VOC Analysis

Signal : TIC

| peak # | R.T. min | first scan | max scan | last scan | PK TY | peak height | corr. area | corr. % max. | % of total |
|--------|----------|------------|----------|-----------|-------|-------------|------------|--------------|------------|
| 1 | 2.148 | 36 | 40 | 44 | rBV2 | 4004 | 7405 | 0.55% | 0.074% |
| 2 | 2.349 | 67 | 73 | 86 | rVB | 91891 | 163660 | 12.08% | 1.625% |
| 3 | 2.885 | 154 | 161 | 175 | rBV | 57086 | 143392 | 10.58% | 1.424% |
| 4 | 3.263 | 217 | 223 | 224 | rBV5 | 1247 | 2514 | 0.19% | 0.025% |
| 5 | 3.379 | 238 | 242 | 243 | rBV3 | 1009 | 1315 | 0.10% | 0.013% |
| 6 | 3.465 | 253 | 256 | 259 | rBV3 | 598 | 871 | 0.06% | 0.009% |
| 7 | 3.580 | 273 | 275 | 279 | rVB5 | 879 | 1226 | 0.09% | 0.012% |
| 8 | 3.867 | 315 | 322 | 326 | rBV6 | 2098 | 4715 | 0.35% | 0.047% |
| 9 | 4.019 | 335 | 347 | 359 | rBV | 141868 | 457373 | 33.76% | 4.542% |
| 10 | 4.391 | 400 | 408 | 414 | rBV4 | 2526 | 7396 | 0.55% | 0.073% |
| 11 | 4.916 | 482 | 494 | 511 | rBV3 | 13176 | 50997 | 3.76% | 0.506% |
| 12 | 5.117 | 523 | 527 | 529 | rVV4 | 732 | 1065 | 0.08% | 0.011% |
| 13 | 5.306 | 555 | 558 | 561 | rVB3 | 522 | 683 | 0.05% | 0.007% |
| 14 | 5.501 | 587 | 590 | 593 | rBV2 | 467 | 620 | 0.05% | 0.006% |
| 15 | 5.580 | 597 | 603 | 607 | rBV4 | 363 | 898 | 0.07% | 0.009% |
| 16 | 5.739 | 623 | 629 | 630 | rBV5 | 908 | 1204 | 0.09% | 0.012% |
| 17 | 5.800 | 637 | 639 | 644 | rVB4 | 858 | 997 | 0.07% | 0.010% |
| 18 | 5.921 | 654 | 659 | 660 | rBV3 | 1723 | 2374 | 0.18% | 0.024% |
| 19 | 6.080 | 681 | 685 | 687 | rBV3 | 393 | 639 | 0.05% | 0.006% |
| 20 | 6.123 | 690 | 692 | 695 | rVV3 | 698 | 791 | 0.06% | 0.008% |
| 21 | 6.921 | 816 | 823 | 828 | rVB5 | 757 | 1661 | 0.12% | 0.016% |
| 22 | 7.074 | 839 | 848 | 853 | rBV | 46700 | 129287 | 9.54% | 1.284% |
| 23 | 7.135 | 854 | 858 | 870 | rVV2 | 50553 | 135141 | 9.97% | 1.342% |
| 24 | 7.257 | 872 | 878 | 887 | rVB2 | 7965 | 20928 | 1.54% | 0.208% |
| 25 | 7.519 | 916 | 921 | 922 | rVB5 | 657 | 724 | 0.05% | 0.007% |
| 26 | 7.647 | 931 | 942 | 958 | rBV | 218217 | 533659 | 39.39% | 5.300% |
| 27 | 7.946 | 987 | 991 | 994 | rBV4 | 732 | 1273 | 0.09% | 0.013% |
| 28 | 8.275 | 1033 | 1045 | 1061 | rBV2 | 457539 | 1354867 | 100.00% | 13.455% |
| 29 | 8.531 | 1085 | 1087 | 1091 | rBV5 | 469 | 658 | 0.05% | 0.007% |
| 30 | 8.622 | 1101 | 1102 | 1108 | rVB5 | 911 | 1228 | 0.09% | 0.012% |
| 31 | 8.695 | 1108 | 1114 | 1116 | rBV4 | 1154 | 1661 | 0.12% | 0.016% |
| 32 | 8.842 | 1128 | 1138 | 1153 | rBV | 457535 | 897573 | 66.25% | 8.914% |
| 33 | 9.037 | 1166 | 1170 | 1172 | rBV3 | 927 | 1237 | 0.09% | 0.012% |
| 34 | 9.073 | 1172 | 1176 | 1182 | rVB7 | 1613 | 4025 | 0.30% | 0.040% |

Data Path : Z:\VOASRV\HPCHEM1\MSVOA W\DATA\VW080219\
 Data File : VW011629.D
 Acq On : 02 Aug 2019 17:53
 Operator : SY/VA
 Sample : K4117-08
 Misc : 5.85G/10ML/MSVOA W/SOIL
 ALS Vial : 1 Sample Multiplier: 1

Instrument :
 MSVOA_W
 ClientSampleId :
 JLLF6

Integration Parameters: LSCINT.P

Integrator: RTE
 Smoothing : OFF
 Sampling : 1
 Start Thrs: 0.2
 Stop Thrs : 0

Filtering: 5
 Min Area: 0 % of largest Peak
 Max Peaks: 100
 Peak Location: TOP

If leading or trailing edge < 100 prefer < Baseline drop else tangent >
 Peak separation: 5

Method : Z:\VOASRV\HPCHEM1\MSVOA_W\METHOD\SOM2WLM073019S.M
 Title : VOC Analysis

| | | | | | | | | | |
|----|--------|------|------|------|------|--------|---------|--------|---------|
| 35 | 9.275 | 1200 | 1209 | 1228 | rBV | 317515 | 651599 | 48.09% | 6.471% |
| 36 | 9.585 | 1256 | 1260 | 1261 | rBV2 | 659 | 678 | 0.05% | 0.007% |
| 37 | 9.659 | 1266 | 1272 | 1280 | rBV6 | 1895 | 4226 | 0.31% | 0.042% |
| 38 | 9.756 | 1284 | 1288 | 1292 | rVB3 | 1127 | 1381 | 0.10% | 0.014% |
| 39 | 9.896 | 1305 | 1311 | 1319 | rBV5 | 2423 | 5902 | 0.44% | 0.059% |
| 40 | 10.037 | 1323 | 1334 | 1344 | rBV | 164653 | 301416 | 22.25% | 2.993% |
| 41 | 10.116 | 1344 | 1347 | 1355 | rVV6 | 1321 | 2884 | 0.21% | 0.029% |
| 42 | 10.213 | 1358 | 1363 | 1365 | rBV4 | 1472 | 2513 | 0.19% | 0.025% |
| 43 | 10.244 | 1365 | 1368 | 1373 | rVV3 | 1336 | 2855 | 0.21% | 0.028% |
| 44 | 10.323 | 1373 | 1381 | 1389 | rVV | 612435 | 1056871 | 78.01% | 10.495% |
| 45 | 10.390 | 1389 | 1392 | 1396 | rVV2 | 4509 | 6794 | 0.50% | 0.067% |
| 46 | 10.433 | 1396 | 1399 | 1401 | rVV4 | 741 | 847 | 0.06% | 0.008% |
| 47 | 10.579 | 1416 | 1423 | 1433 | rBV | 110030 | 186710 | 13.78% | 1.854% |
| 48 | 10.707 | 1437 | 1444 | 1451 | rBV | 39466 | 72141 | 5.32% | 0.716% |
| 49 | 10.847 | 1463 | 1467 | 1473 | rBV7 | 1706 | 3638 | 0.27% | 0.036% |
| 50 | 10.927 | 1473 | 1480 | 1494 | rBV | 174125 | 300776 | 22.20% | 2.987% |
| 51 | 11.067 | 1497 | 1503 | 1511 | rVB | 22125 | 38269 | 2.82% | 0.380% |
| 52 | 11.177 | 1516 | 1521 | 1526 | rVB6 | 3440 | 5722 | 0.42% | 0.057% |
| 53 | 11.341 | 1545 | 1548 | 1552 | rVB4 | 752 | 1081 | 0.08% | 0.011% |
| 54 | 11.390 | 1552 | 1556 | 1557 | rBV2 | 1364 | 1389 | 0.10% | 0.014% |
| 55 | 11.439 | 1560 | 1564 | 1573 | rVB2 | 9717 | 16881 | 1.25% | 0.168% |
| 56 | 11.634 | 1586 | 1596 | 1605 | rBV | 599709 | 1046212 | 77.22% | 10.390% |
| 57 | 11.731 | 1611 | 1612 | 1617 | rVB3 | 1713 | 1584 | 0.12% | 0.016% |
| 58 | 11.835 | 1626 | 1629 | 1632 | rBV3 | 1683 | 2278 | 0.17% | 0.023% |
| 59 | 12.091 | 1667 | 1671 | 1673 | rBV3 | 581 | 683 | 0.05% | 0.007% |
| 60 | 12.170 | 1679 | 1684 | 1692 | rVB5 | 1910 | 4135 | 0.31% | 0.041% |
| 61 | 12.347 | 1707 | 1713 | 1715 | rBV4 | 1150 | 1849 | 0.14% | 0.018% |
| 62 | 12.469 | 1726 | 1733 | 1737 | rBV5 | 2858 | 5243 | 0.39% | 0.052% |
| 63 | 12.609 | 1749 | 1756 | 1762 | rBV | 34639 | 57562 | 4.25% | 0.572% |
| 64 | 12.695 | 1763 | 1770 | 1777 | rVV | 216352 | 362530 | 26.76% | 3.600% |
| 65 | 12.762 | 1777 | 1781 | 1790 | rVB8 | 1771 | 3702 | 0.27% | 0.037% |
| 66 | 12.896 | 1794 | 1803 | 1805 | rBV4 | 1579 | 3777 | 0.28% | 0.038% |
| 67 | 12.939 | 1805 | 1810 | 1818 | rVV3 | 10560 | 18352 | 1.35% | 0.182% |
| 68 | 13.042 | 1822 | 1827 | 1830 | rVV4 | 1214 | 1858 | 0.14% | 0.018% |
| 69 | 13.085 | 1830 | 1834 | 1840 | rVB5 | 1274 | 2186 | 0.16% | 0.022% |
| 70 | 13.195 | 1848 | 1852 | 1857 | rVB3 | 1577 | 2110 | 0.16% | 0.021% |
| 71 | 13.249 | 1857 | 1861 | 1863 | rBV4 | 1931 | 2664 | 0.20% | 0.026% |

Data Path : Z:\VOASRV\HPCHEM1\MSVOA W\DATA\VW080219\
 Data File : VW011629.D
 Acq On : 02 Aug 2019 17:53
 Operator : SY/VA
 Sample : K4117-08
 Misc : 5.85G/10ML/MSVOA W/SOIL
 ALS Vial : 1 Sample Multiplier: 1

Instrument :
 MSVOA_W
 ClientSampleId :
 JLLF6

Integration Parameters: LSCINT.P

Integrator: RTE
 Smoothing : OFF
 Sampling : 1
 Start Thrs: 0.2
 Stop Thrs : 0

Filtering: 5
 Min Area: 0 % of largest Peak
 Max Peaks: 100
 Peak Location: TOP

If leading or trailing edge < 100 prefer < Baseline drop else tangent >
 Peak separation: 5

Method : Z:\VOASRV\HPCHEM1\MSVOA_W\METHOD\SOM2WLM073019S.M
 Title : VOC Analysis

| | | | | | | | | | |
|-----|--------|------|------|------|------|--------|--------|--------|--------|
| 72 | 13.292 | 1865 | 1868 | 1874 | rVB4 | 4665 | 8117 | 0.60% | 0.081% |
| 73 | 13.408 | 1881 | 1887 | 1893 | rVB6 | 4050 | 7666 | 0.57% | 0.076% |
| 74 | 13.506 | 1893 | 1903 | 1905 | rBV9 | 2932 | 6268 | 0.46% | 0.062% |
| 75 | 13.560 | 1905 | 1912 | 1922 | rVV | 591738 | 973449 | 71.85% | 9.667% |
| 76 | 13.652 | 1922 | 1927 | 1932 | rVB | 17682 | 28176 | 2.08% | 0.280% |
| 77 | 13.762 | 1942 | 1945 | 1949 | rBV5 | 2175 | 3204 | 0.24% | 0.032% |
| 78 | 13.853 | 1953 | 1960 | 1973 | rVV | 520633 | 851666 | 62.86% | 8.458% |
| 79 | 13.951 | 1973 | 1976 | 1980 | rVB4 | 1408 | 2159 | 0.16% | 0.021% |
| 80 | 14.024 | 1983 | 1988 | 1989 | rBV4 | 1414 | 2297 | 0.17% | 0.023% |
| 81 | 14.072 | 1990 | 1996 | 2002 | rVB2 | 10653 | 18583 | 1.37% | 0.185% |
| 82 | 14.207 | 2014 | 2018 | 2021 | rVB4 | 1036 | 1443 | 0.11% | 0.014% |
| 83 | 14.329 | 2030 | 2038 | 2048 | rBV8 | 4278 | 9621 | 0.71% | 0.096% |
| 84 | 14.420 | 2048 | 2053 | 2060 | rVB6 | 1991 | 3446 | 0.25% | 0.034% |
| 85 | 14.633 | 2085 | 2088 | 2089 | rVV3 | 1555 | 1670 | 0.12% | 0.017% |
| 86 | 14.731 | 2100 | 2104 | 2106 | rBV3 | 1822 | 2144 | 0.16% | 0.021% |
| 87 | 14.786 | 2112 | 2113 | 2117 | rBV3 | 675 | 730 | 0.05% | 0.007% |
| 88 | 14.877 | 2124 | 2128 | 2129 | rBV2 | 695 | 735 | 0.05% | 0.007% |
| 89 | 15.036 | 2153 | 2154 | 2158 | rVB4 | 776 | 744 | 0.05% | 0.007% |
| 90 | 15.078 | 2158 | 2161 | 2163 | rBV3 | 699 | 1120 | 0.08% | 0.011% |
| 91 | 15.182 | 2176 | 2178 | 2181 | rVB3 | 1134 | 1193 | 0.09% | 0.012% |
| 92 | 15.438 | 2215 | 2220 | 2226 | rVB2 | 14257 | 23623 | 1.74% | 0.235% |
| 93 | 15.481 | 2226 | 2227 | 2229 | rBV2 | 785 | 740 | 0.05% | 0.007% |
| 94 | 15.664 | 2254 | 2257 | 2258 | rBV3 | 773 | 640 | 0.05% | 0.006% |
| 95 | 15.682 | 2258 | 2260 | 2266 | rBV5 | 705 | 1180 | 0.09% | 0.012% |
| 96 | 15.792 | 2276 | 2278 | 2280 | rBV3 | 1034 | 831 | 0.06% | 0.008% |
| 97 | 15.926 | 2299 | 2300 | 2304 | rBV3 | 852 | 940 | 0.07% | 0.009% |
| 98 | 16.188 | 2342 | 2343 | 2345 | rBV2 | 851 | 628 | 0.05% | 0.006% |
| 99 | 16.212 | 2345 | 2347 | 2350 | rVV4 | 803 | 641 | 0.05% | 0.006% |
| 100 | 16.340 | 2366 | 2368 | 2372 | rVB5 | 634 | 792 | 0.06% | 0.008% |

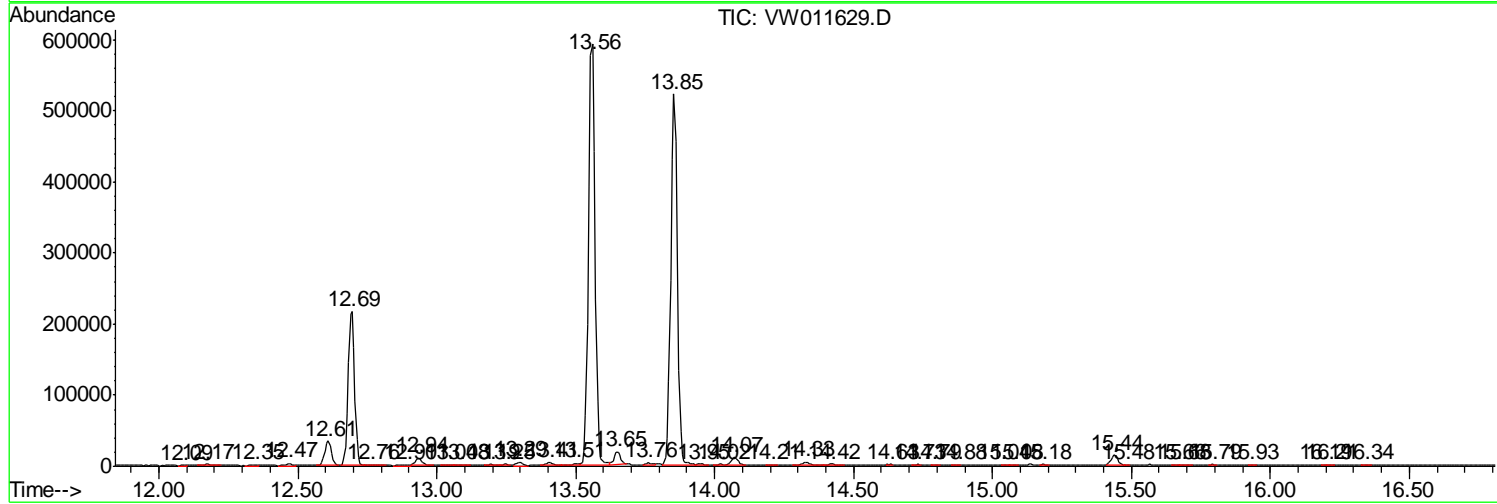
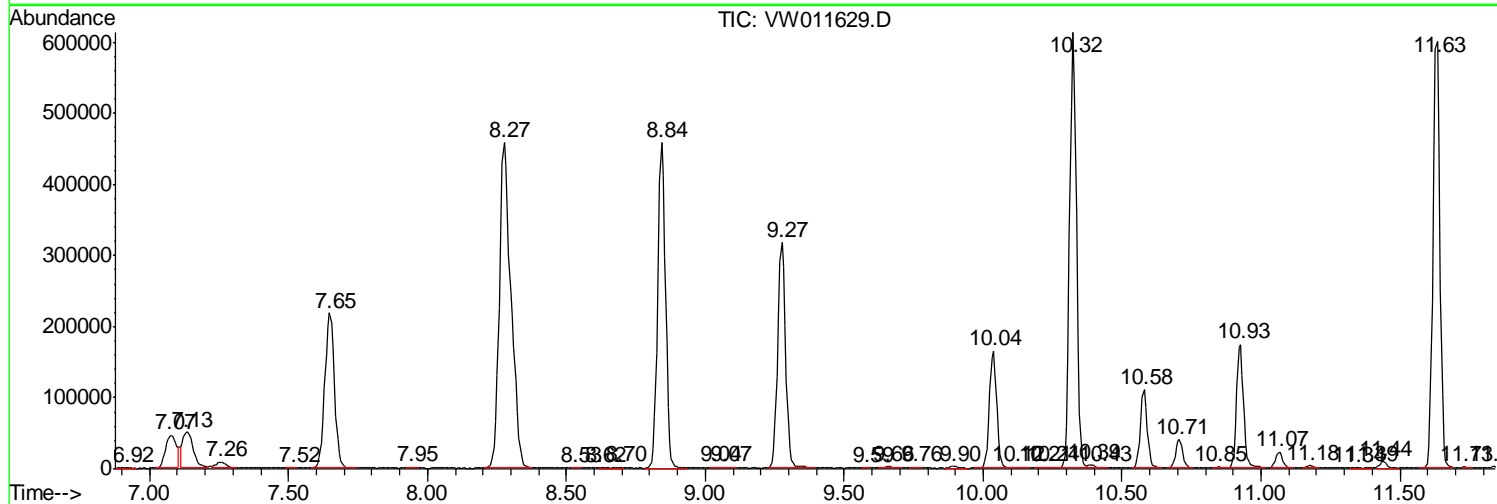
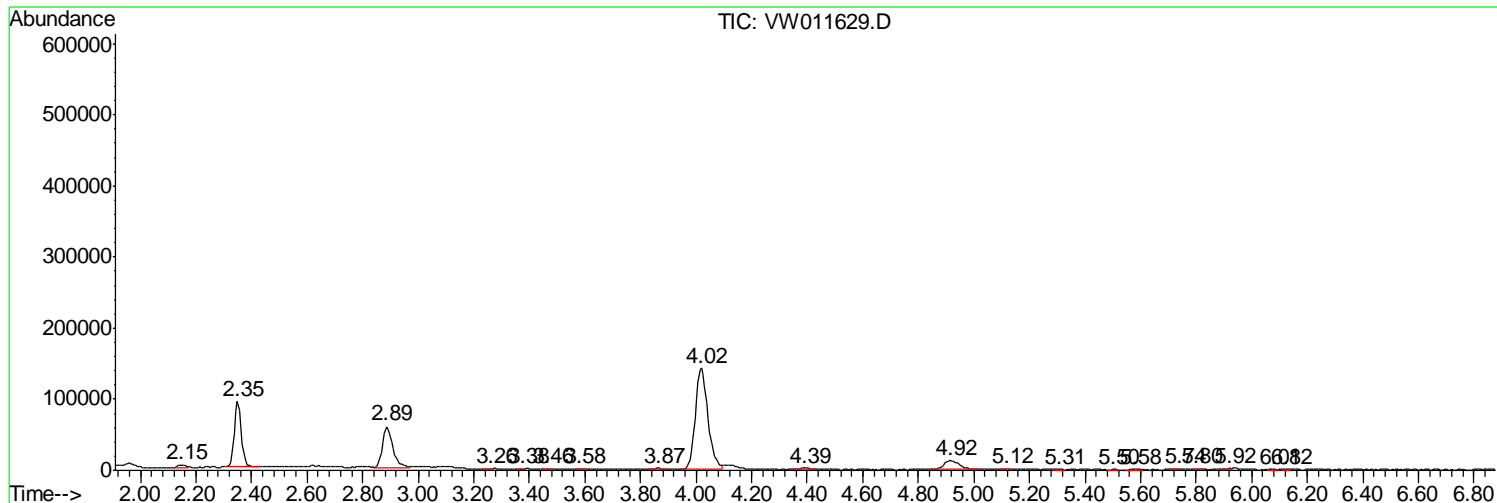
Sum of corrected areas: 10069801

Data Path : Z:\VOASRV\HPCHEM1\MSVOA W\DATA\VW080219\
 Data File : VW011629.D
 Acq On : 02 Aug 2019 17:53
 Operator : SY/VA
 Sample : K4117-08
 Misc : 5.85G/10ML/MSVOA W/SOIL
 ALS Vial : 1 Sample Multiplier: 1

Instrument :
 MSVOA_W
ClientSampleId :
 JLLF6

Quant Method : Z:\VOASRV\HPCHEM1\MSVOA_W\METHOD\SOM2WLM073019S.M
 Quant Title : VOC Analysis

TIC Library : C:\DATABASE\NIST11.L
 TIC Integration Parameters: LSCINT.P



Data Path : Z:\VOASRV\HPCHEM1\MSVOA_W\DATA\VW080219\
Data File : VW011629.D
Acq On : 02 Aug 2019 17:53
Operator : SY/VA
Sample : K4117-08
Misc : 5.85G/10ML/MSVOA_W/SOIL
ALS Vial : 1 Sample Multiplier: 1

Instrument :
MSVOA_W
ClientSampleId :
JLLF6

Quant Method : Z:\VOASRV\HPCHEM1\MSVOA_W\METHOD\SOM2WLM073019S.M
Quant Title : VOC Analysis

TIC Library : C:\DATABASE\NIST11.L
TIC Integration Parameters: LSCINT.P

No Library Search Compounds Detected

Data Path : Z:\VOASRV\HPCHEM1\MSVOA_W\DATA\VW080219\
Data File : VW011629.D
Acq On : 02 Aug 2019 17:53
Operator : SY/VA
Sample : K4117-08
Misc : 5.85G/10ML/MSVOA_W/SOIL
ALS Vial : 1 Sample Multiplier: 1

Instrument :
MSVOA_W
ClientSampleId :
JLLF6

Quant Method : Z:\VOASRV\HPCHEM1\MSVOA_W\METHOD\SOM2WLM073019S.M
Quant Title : VOC Analysis

TIC Library : C:\DATABASE\NIST11.L
TIC Integration Parameters: LSCINT.P

| TIC Top Hit name | RT | EstConc | Units | Response | --Internal Standard-- | | | |
|------------------|----|---------|-------|----------|-----------------------|----|------|------|
| | | | | | # | RT | Resp | Conc |
