

Data Path : Z:\VOASRV\HPCHEM1\MSVOA\_W\DATA\VW080319\  
 Data File : VW011643.D  
 Acq On : 03 Aug 2019 02:34  
 Operator : SY/VA  
 Sample : K4131-08  
 Misc : 5.34G/5ML/MSVOA\_W/SOIL  
 ALS Vial : 1 Sample Multiplier: 1

Instrument :  
 MSVOA\_W  
 ClientSampleId :  
 1S-D2-(30)

Quant Time: Aug 04 00:08:21 2019  
 Quant Method : Z:\VOASRV\HPCHEM1\MSVOA\_W\METHOD\82W072719S.M  
 Quant Title : SW846 8260  
 QLast Update : Sat Jul 27 00:23:30 2019  
 Response via : Initial Calibration

Internal Standards	R.T.	QIon	Response	Conc	Units	Dev(Min)
1) Pentafluorobenzene	7.95	168	262158	50.00	ug/l	0.00
34) 1,4-Difluorobenzene	8.84	114	436271	50.00	ug/l	0.00
63) Chlorobenzene-d5	11.63	117	375793	50.00	ug/l	0.00
72) 1,4-Dichlorobenzene-d4	13.56	152	140815	50.00	ug/l	0.00

System Monitoring Compounds	R.T.	QIon	Response	Conc	Units	Dev(Min)
33) 1,2-Dichloroethane-d4	8.31	65	167858	55.76	ug/l	0.00
Spiked Amount				50.000		
			Recovery	=	111.52%	
35) Dibromofluoromethane	7.88	113	132877	54.29	ug/l	0.00
Spiked Amount				50.000		
			Recovery	=	108.58%	
50) Toluene-d8	10.32	98	552443	55.13	ug/l	0.00
Spiked Amount				50.000		
			Recovery	=	110.26%	
62) 4-Bromofluorobenzene	12.62	95	174262	48.78	ug/l	0.00
Spiked Amount				50.000		
			Recovery	=	97.56%	

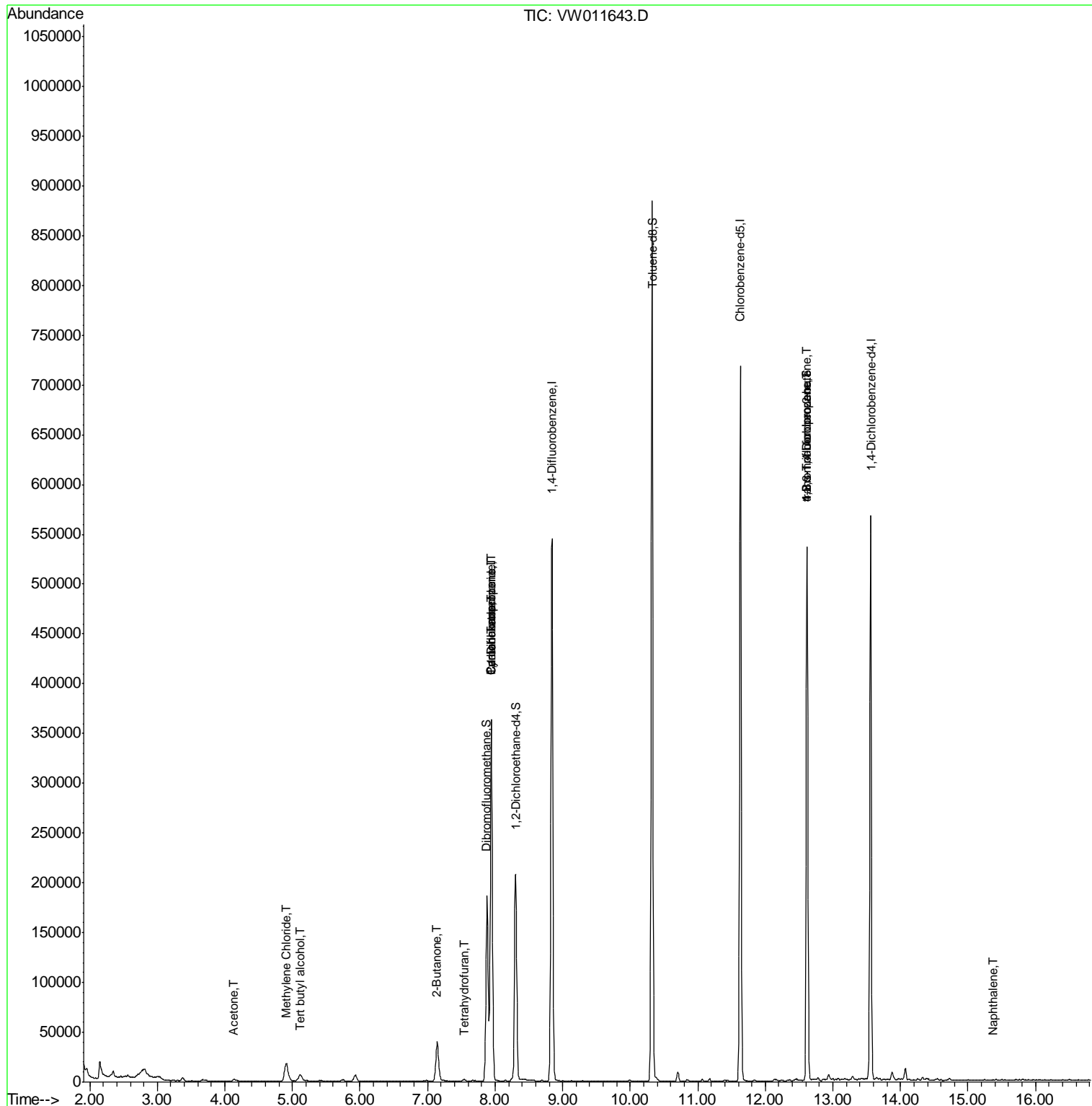
Target Compounds	R.T.	QIon	Response	Conc	Units	Qvalue
11) Tert butyl alcohol	5.12	59	6628	12.925	ug/l #	73
16) Acetone	4.14	43	3460	3.613	ug/l	95
20) Methylene Chloride	4.91	84	12932	3.916	ug/l #	93
25) 2-Butanone	7.14	43	2673	2.133	ug/l	99
29) Tetrahydrofuran	7.54	42	1737	2.425	ug/l	93
31) Cyclohexane	7.95	56	6774	1.204	ug/l #	1
36) 1,1-Dichloropropene	7.95	75	23043	5.080	ug/l #	51
38) Carbon Tetrachloride	7.94	117	26717	6.880	ug/l #	16
76) 1,2,3-Trichloropropane	12.62	75	92379	62.000	ug/l #	100
81) trans-1,4-Dichloro-2-buten	12.62	75	92379	142.888	ug/l #	6
95) Naphthalene	15.36	128	267	2.112	ug/l #	69

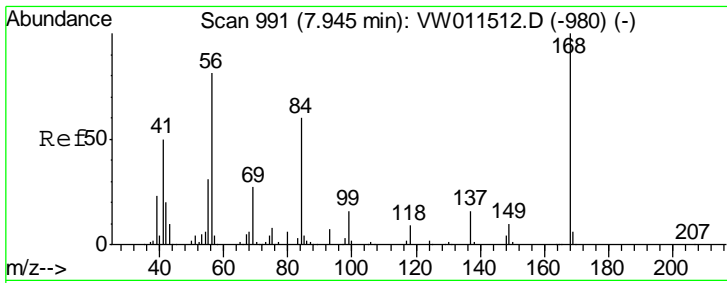
(#) = qualifier out of range (m) = manual integration (+) = signals summed

Data Path : Z:\VOASRV\HPCHEM1\MSVOA\_W\DATA\VW080319\  
 Data File : VW011643.D  
 Acq On : 03 Aug 2019 02:34  
 Operator : SY/VA  
 Sample : K4131-08  
 Misc : 5.34G/5ML/MSVOA\_W/SOIL  
 ALS Vial : 1 Sample Multiplier: 1

Instrument :  
 MSVOA\_W  
 Client Sample Id :  
 1S-D2-(30)

Quant Time: Aug 04 00:08:21 2019  
 Quant Method : Z:\VOASRV\HPCHEM1\MSVOA\_W\METHOD\82W072719S.M  
 Quant Title : SW846 8260  
 QLast Update : Sat Jul 27 00:23:30 2019  
 Response via : Initial Calibration

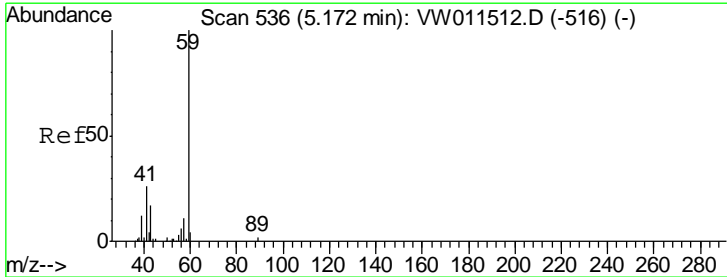
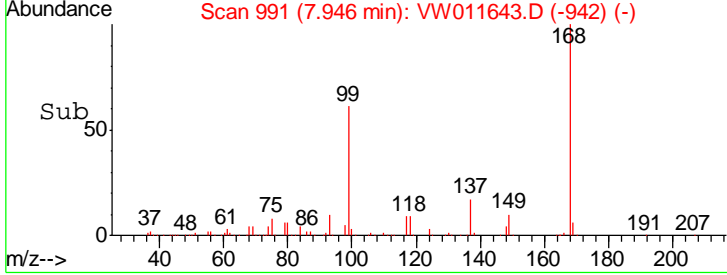
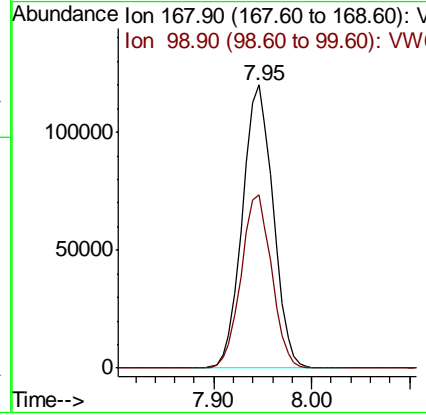
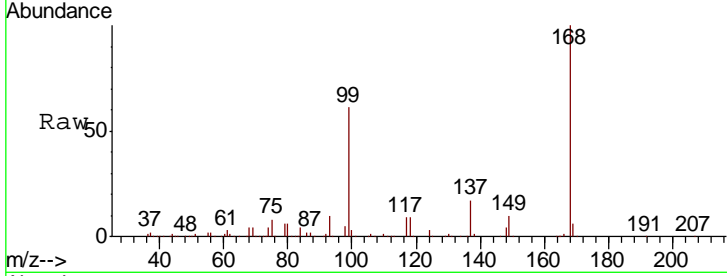




#1  
 Pentafluorobenzene  
 Concen: 50.000 ug/l  
 RT: 7.95 min Scan# 991  
 Delta R.T. 0.00 min  
 Lab File: VW011643.D  
 Acq: 03 Aug 2019 02:34

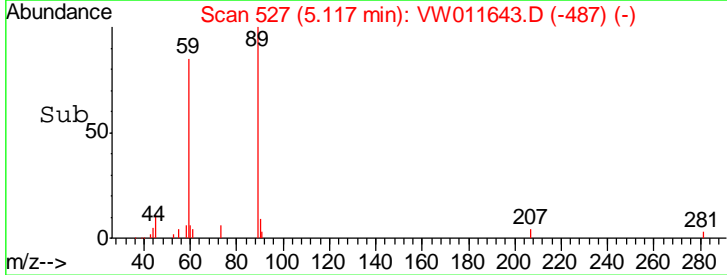
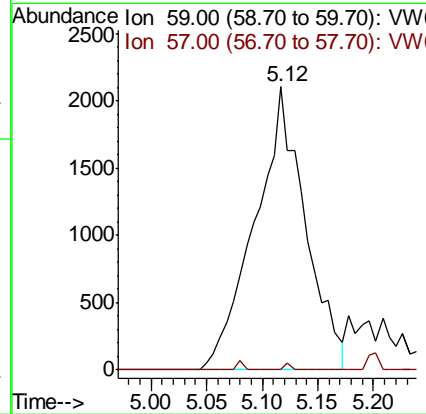
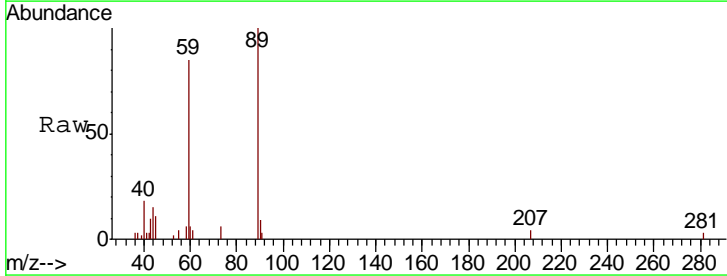
**Instrument :**  
 MSVOA\_W  
**ClientSampled :**  
 1S-D2-(30)

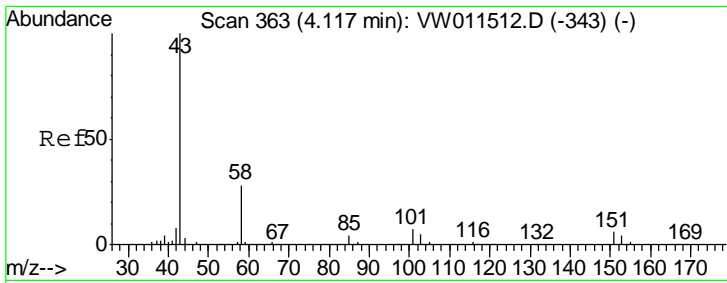
Tgt Ion: 168 Resp: 262158  
 Ion Ratio Lower Upper  
 168 100  
 99 61.3 48.2 72.4



#11  
 Tert butyl alcohol  
 Concen: 12.925 ug/l  
 RT: 5.12 min Scan# 527  
 Delta R.T. -0.05 min  
 Lab File: VW011643.D  
 Acq: 03 Aug 2019 02:34

Tgt Ion: 59 Resp: 6628  
 Ion Ratio Lower Upper  
 59 100  
 57 0.3 8.5 12.7#

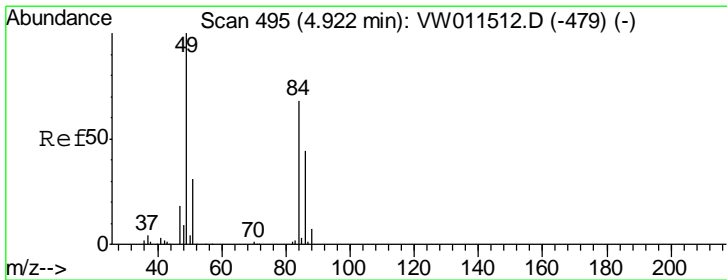
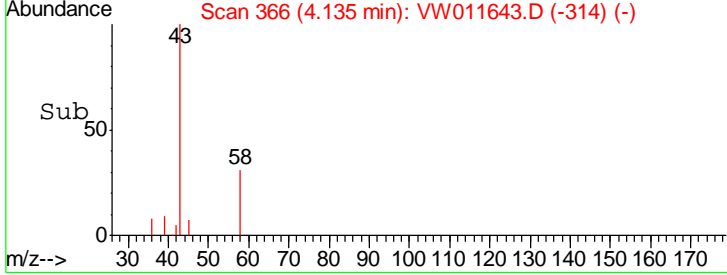
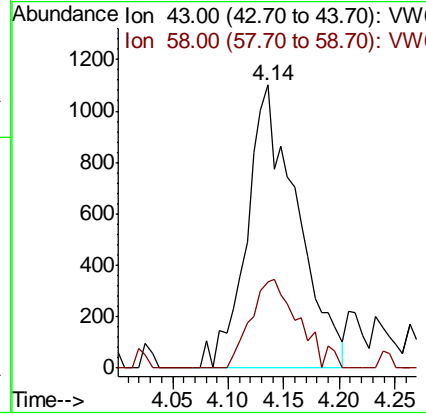
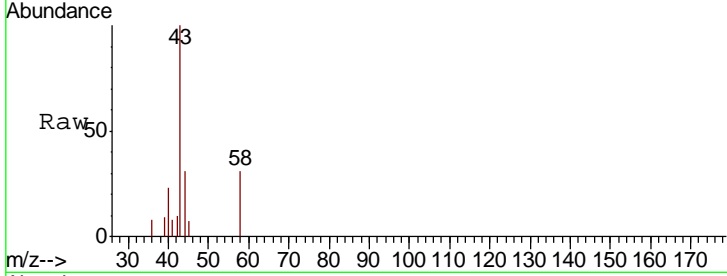




#16  
 Acetone  
 Concen: 3.613 ug/l  
 RT: 4.14 min Scan# 366  
 Delta R.T. 0.02 min  
 Lab File: VW011643.D  
 Acq: 03 Aug 2019 02:34

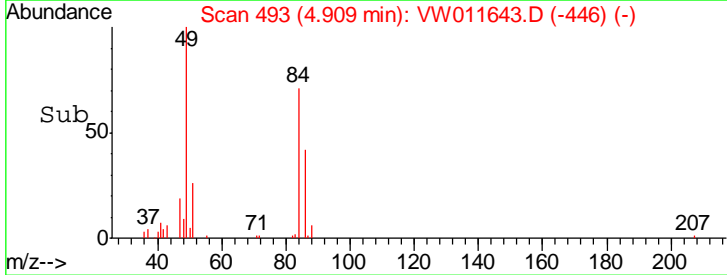
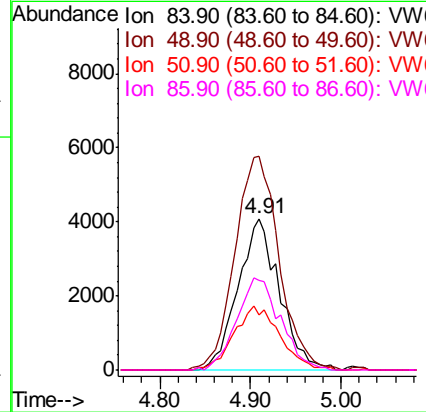
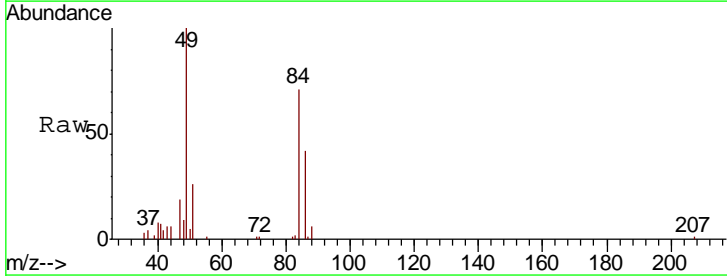
**Instrument :**  
 MSVOA\_W  
**ClientSampled :**  
 1S-D2-(30)

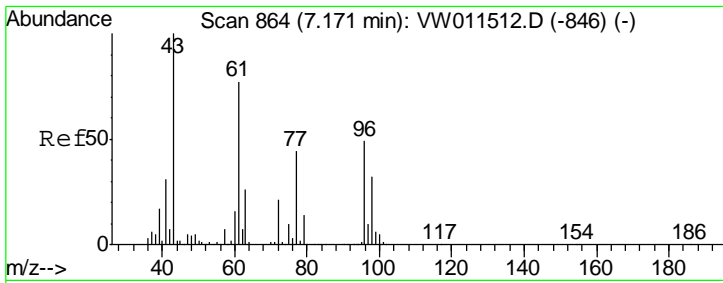
Tgt Ion	Resp	Lower	Upper
43	100		
58	30.7	22.3	33.5



#20  
 Methylene Chloride  
 Concen: 3.916 ug/l  
 RT: 4.91 min Scan# 493  
 Delta R.T. -0.01 min  
 Lab File: VW011643.D  
 Acq: 03 Aug 2019 02:34

Tgt Ion	Resp	Lower	Upper
84	100		
49	141.3	117.8	176.6
51	36.8	37.0	55.4#
86	59.4	51.8	77.8

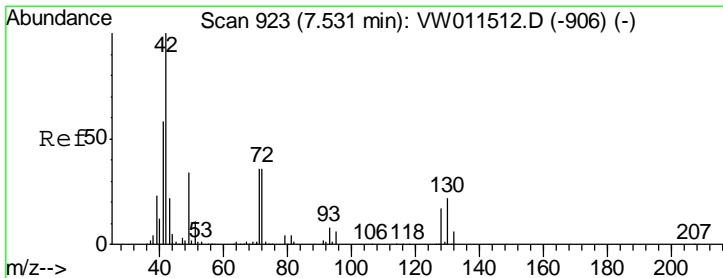
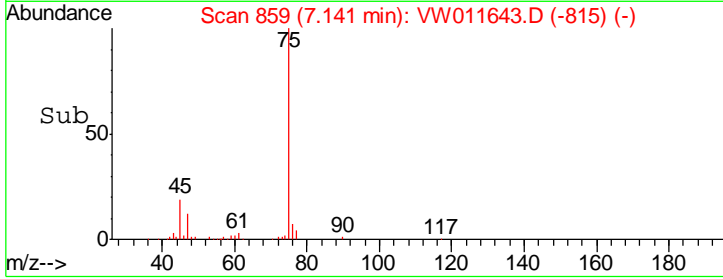
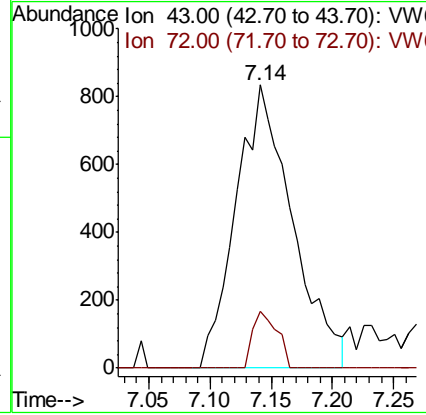
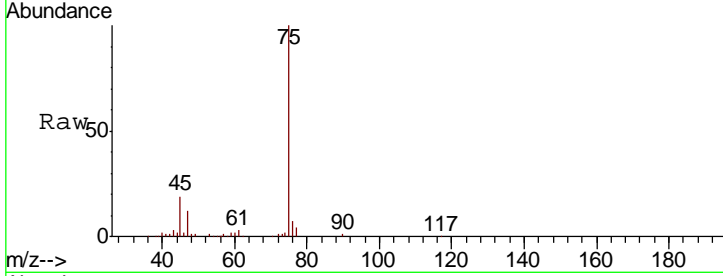




#25  
 2-Butanone  
 Concen: 2.133 ug/l  
 RT: 7.14 min Scan# 859  
 Delta R.T. -0.03 min  
 Lab File: VW011643.D  
 Acq: 03 Aug 2019 02:34

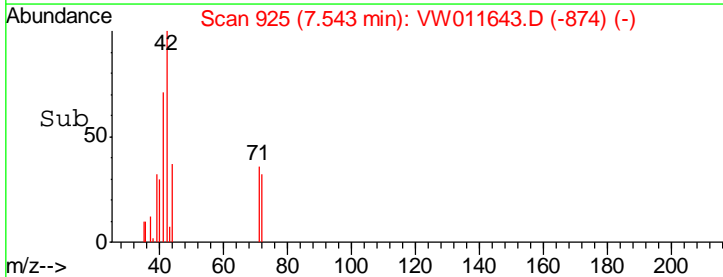
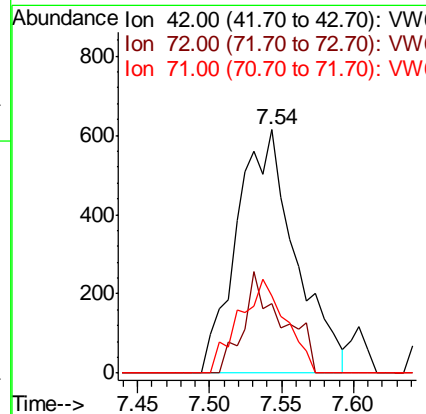
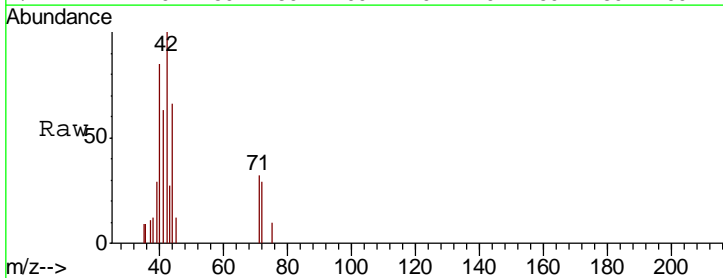
Instrument :  
 MSVOA\_W  
 ClientSampled :  
 1S-D2-(30)

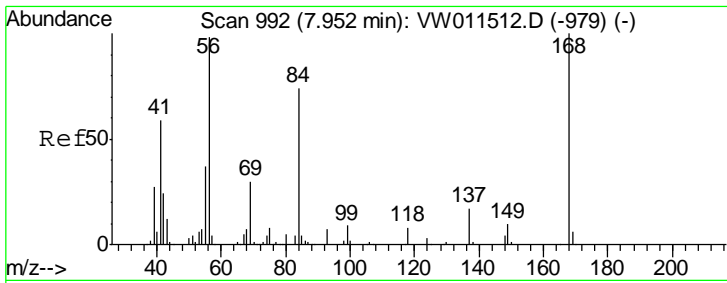
Tgt Ion: 43 Resp: 2673  
 Ion Ratio Lower Upper  
 43 100  
 72 20.0 16.6 24.8



#29  
 Tetrahydrofuran  
 Concen: 2.425 ug/l  
 RT: 7.54 min Scan# 925  
 Delta R.T. 0.01 min  
 Lab File: VW011643.D  
 Acq: 03 Aug 2019 02:34

Tgt Ion: 42 Resp: 1737  
 Ion Ratio Lower Upper  
 42 100  
 72 28.2 27.1 40.7  
 71 30.9 26.2 39.4

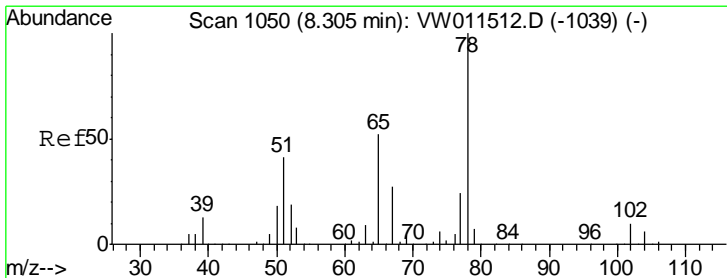
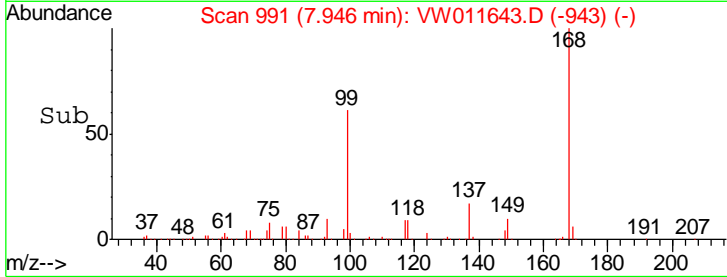
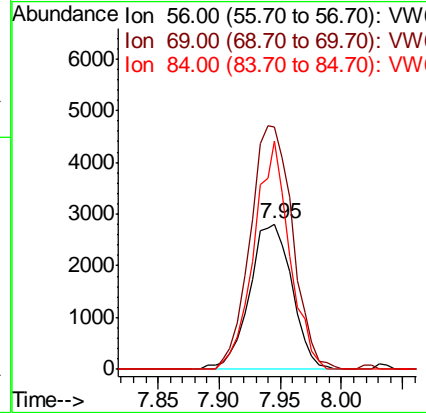
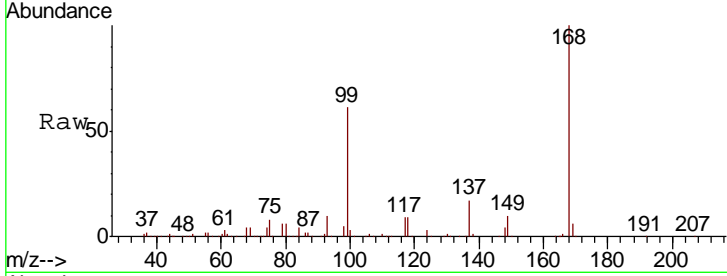




#31  
 Cyclohexane  
 Concen: 1.204 ug/l  
 RT: 7.95 min Scan# 991  
 Delta R.T. -0.01 min  
 Lab File: VW011643.D  
 Acq: 03 Aug 2019 02:34

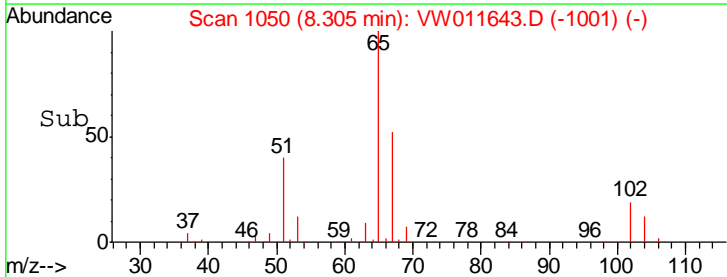
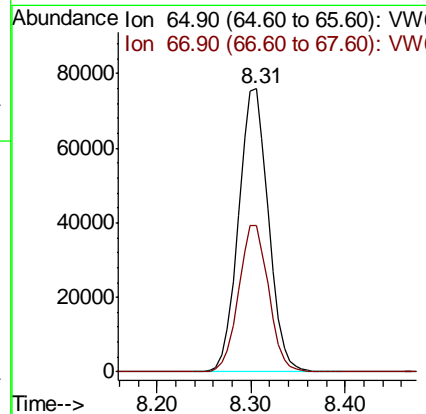
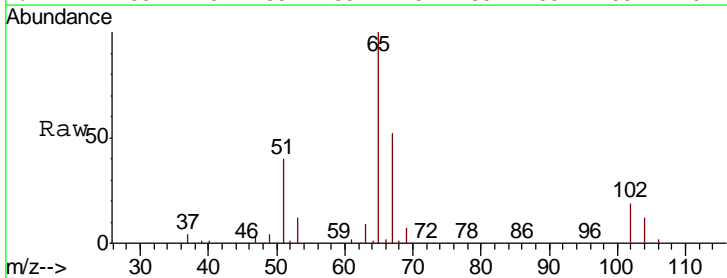
Instrument :  
 MSVOA\_W  
 ClientSampled :  
 1S-D2-(30)

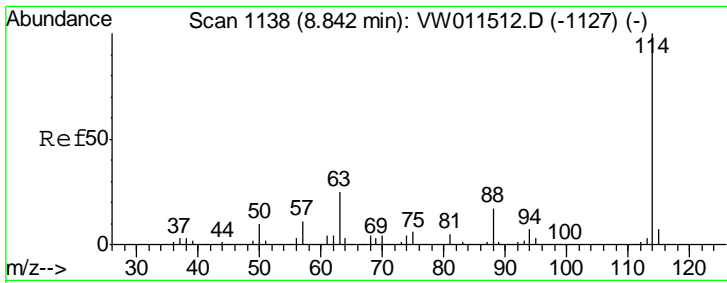
Tgt Ion	Resp	Lower	Upper
56	6774		
69	166.8	24.3	36.5#
84	157.5	60.4	90.6#



#33  
 1,2-Dichloroethane-d4  
 Concen: 55.761 ug/l  
 RT: 8.31 min Scan# 1050  
 Delta R.T. 0.00 min  
 Lab File: VW011643.D  
 Acq: 03 Aug 2019 02:34

Tgt Ion	Resp	Lower	Upper
65	167858		
67	52.0	0.0	105.2

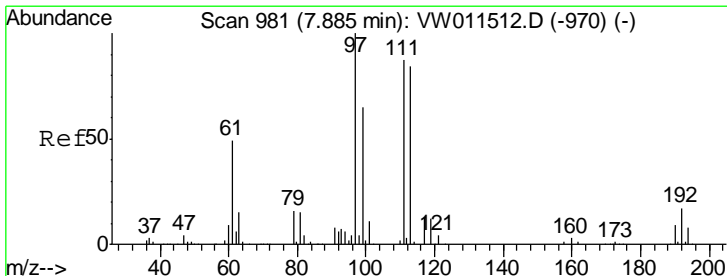
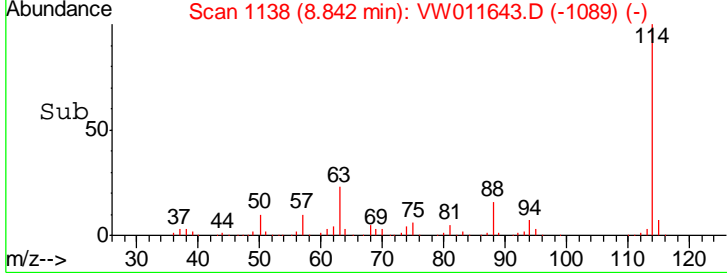
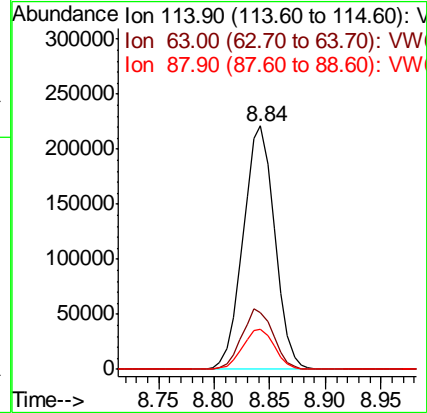
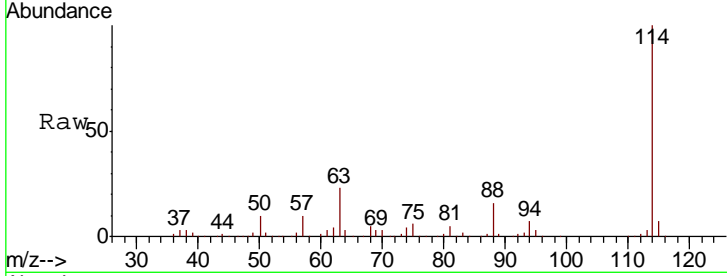




#34  
 1,4-Difluorobenzene  
 Concen: 50.000 ug/l  
 RT: 8.84 min Scan# 1138  
 Delta R.T. 0.00 min  
 Lab File: VW011643.D  
 Acq: 03 Aug 2019 02:34

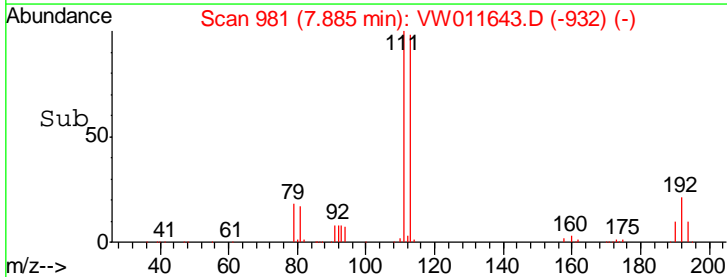
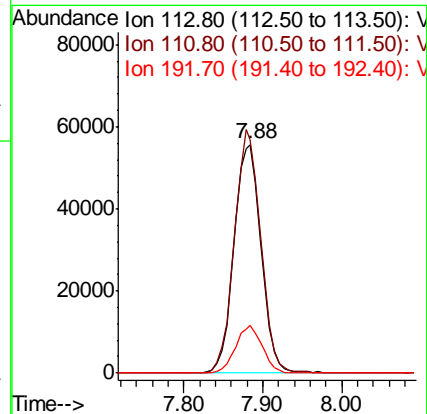
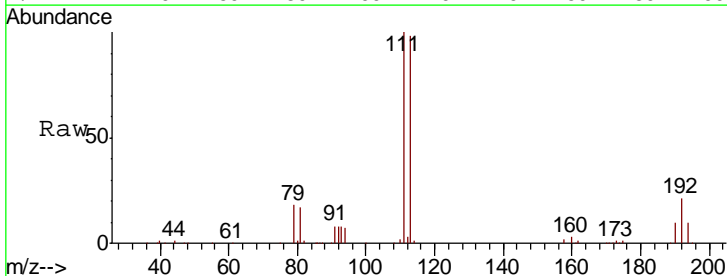
Instrument :  
 MSVOA\_W  
 ClientSampleId :  
 1S-D2-(30)

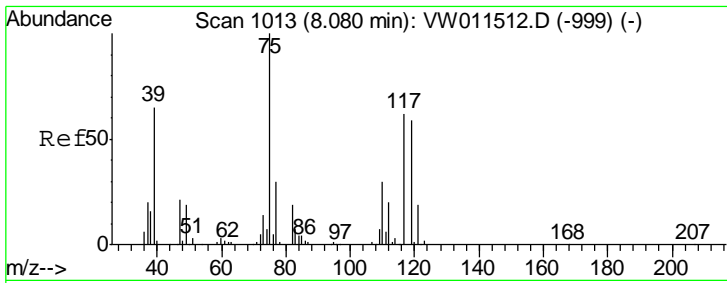
Tgt Ion	Resp	Lower	Upper
114	436271		
63	23.4	0.0	49.2
88	16.2	0.0	33.8



#35  
 Dibromofluoromethane  
 Concen: 54.290 ug/l  
 RT: 7.88 min Scan# 981  
 Delta R.T. 0.00 min  
 Lab File: VW011643.D  
 Acq: 03 Aug 2019 02:34

Tgt Ion	Resp	Lower	Upper
113	132877		
111	103.7	82.7	124.1
192	20.5	16.1	24.1

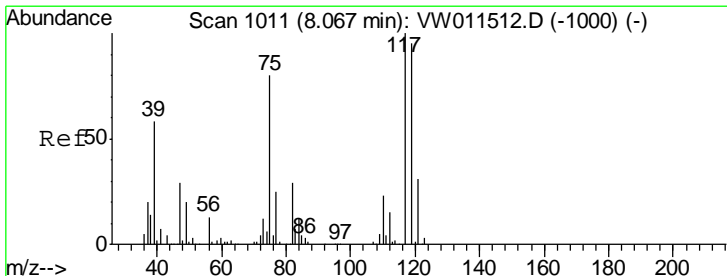
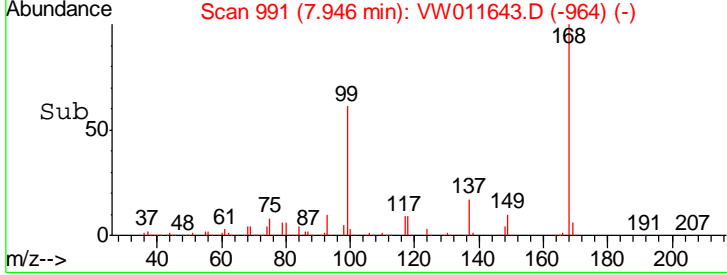
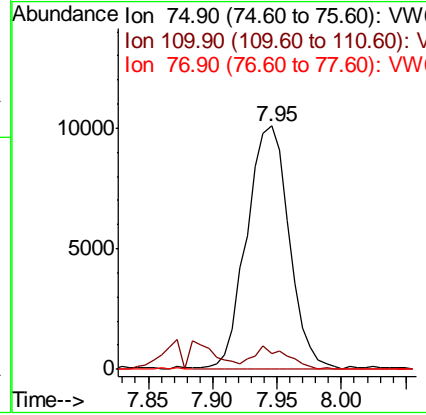
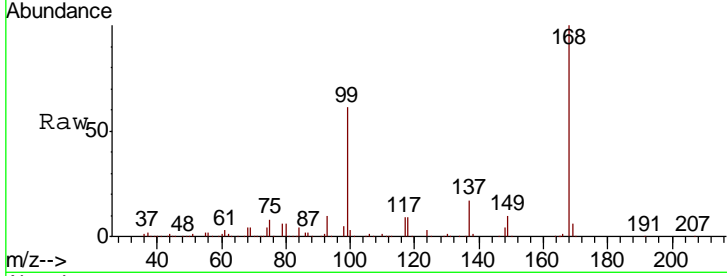




#36  
 1,1-Dichloropropene  
 Concen: 5.080 ug/l  
 RT: 7.95 min Scan# 991  
 Delta R.T. -0.13 min  
 Lab File: VW011643.D  
 Acq: 03 Aug 2019 02:34

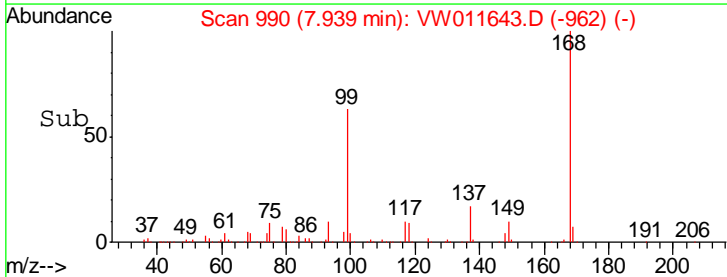
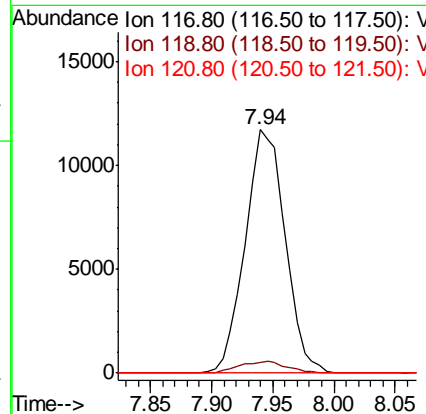
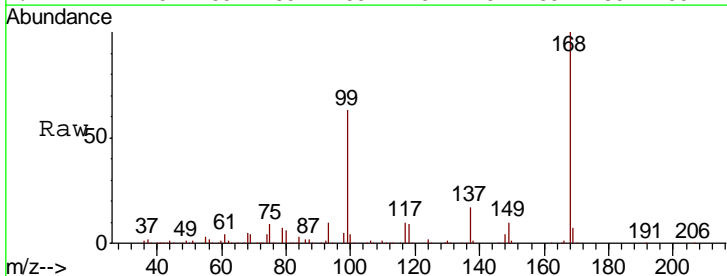
**Instrument :**  
 MSVOA\_W  
**ClientSampled :**  
 1S-D2-(30)

Tgt Ion	Resp	Lower	Upper
75	100		
110	7.6	15.6	46.8#
77	0.0	24.3	36.5#

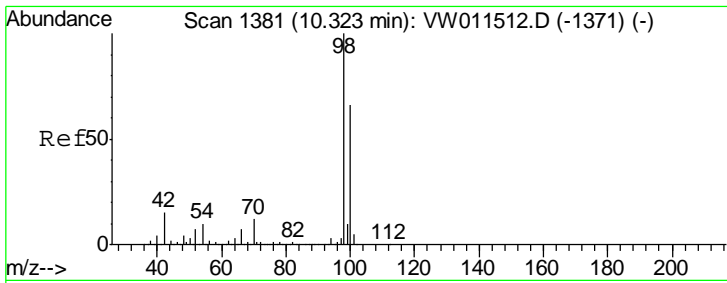


#38  
 Carbon Tetrachloride  
 Concen: 6.880 ug/l  
 RT: 7.94 min Scan# 990  
 Delta R.T. -0.13 min  
 Lab File: VW011643.D  
 Acq: 03 Aug 2019 02:34

Tgt Ion	Resp	Lower	Upper
117	100		
119	4.5	75.8	113.6#
121	0.0	24.7	37.1#



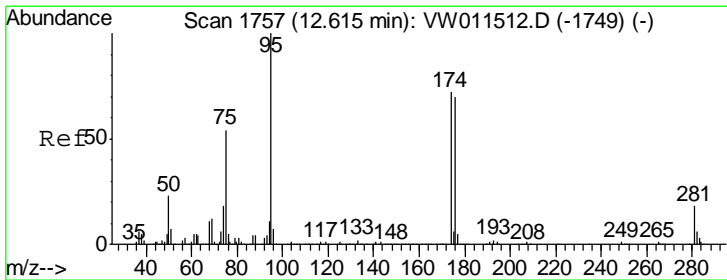
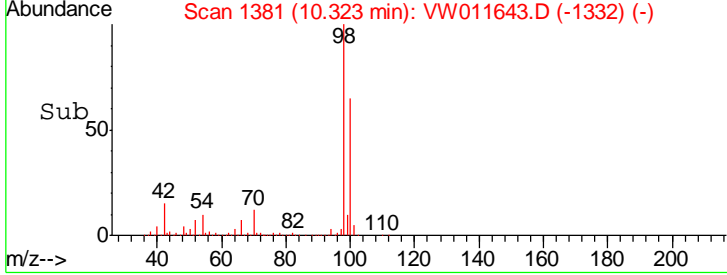
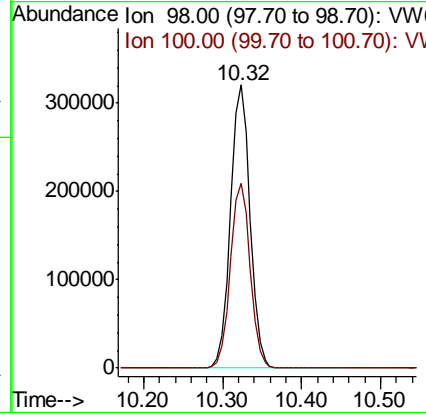
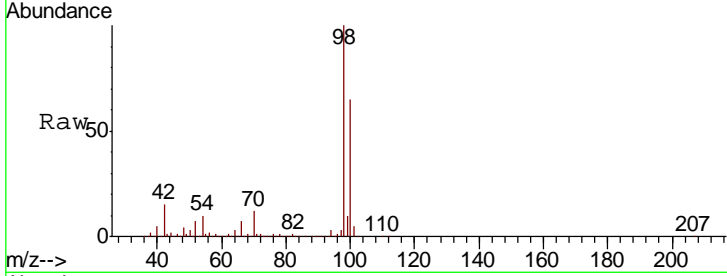




#50  
 Toluene-d8  
 Concen: 55.128 ug/l  
 RT: 10.32 min Scan# 1381  
 Delta R.T. 0.00 min  
 Lab File: VW011643.D  
 Acq: 03 Aug 2019 02:34

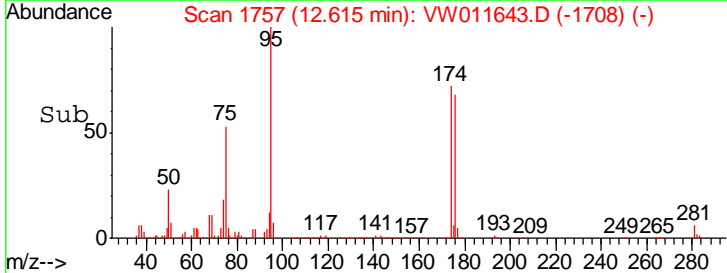
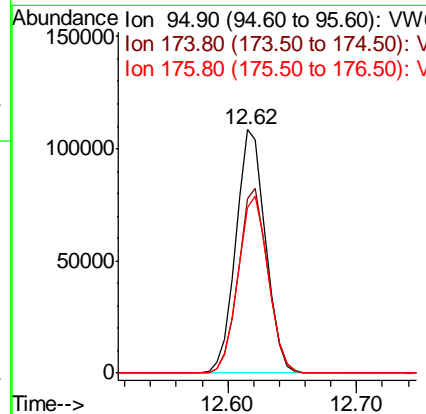
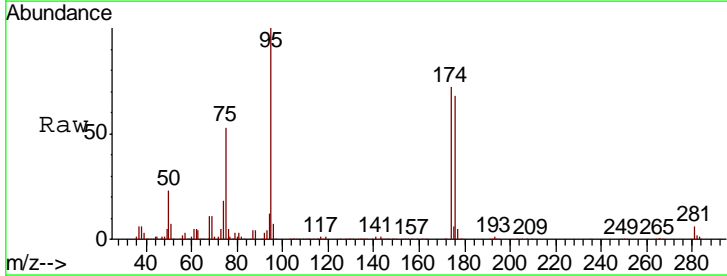
Instrument :  
 MSVOA\_W  
 ClientSampled :  
 1S-D2-(30)

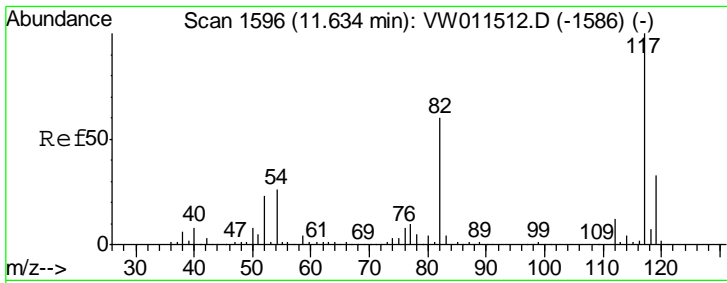
Tgt Ion: 98 Resp: 552443  
 Ion Ratio Lower Upper  
 98 100  
 100 65.9 52.7 79.1



#62  
 4-Bromofluorobenzene  
 Concen: 48.776 ug/l  
 RT: 12.62 min Scan# 1757  
 Delta R.T. 0.00 min  
 Lab File: VW011643.D  
 Acq: 03 Aug 2019 02:34

Tgt Ion: 95 Resp: 174262  
 Ion Ratio Lower Upper  
 95 100  
 174 75.5 0.0 150.2  
 176 73.5 0.0 144.4

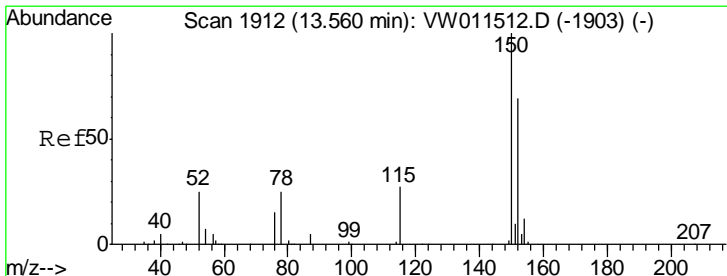
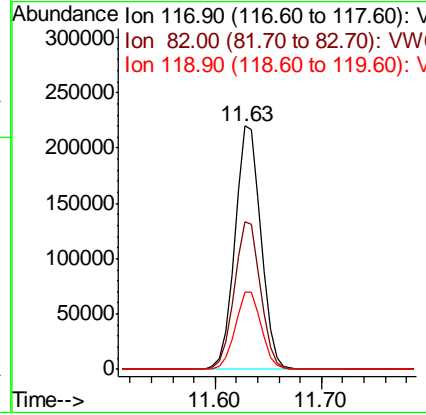
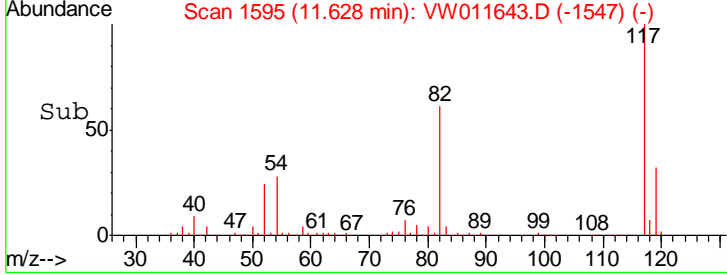
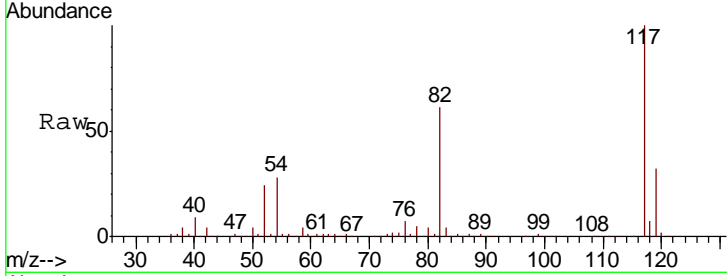




#63  
 Chlorobenzene-d5  
 Concen: 50.000 ug/l  
 RT: 11.63 min Scan# 1595  
 Delta R.T. -0.01 min  
 Lab File: VW011643.D  
 Acq: 03 Aug 2019 02:34

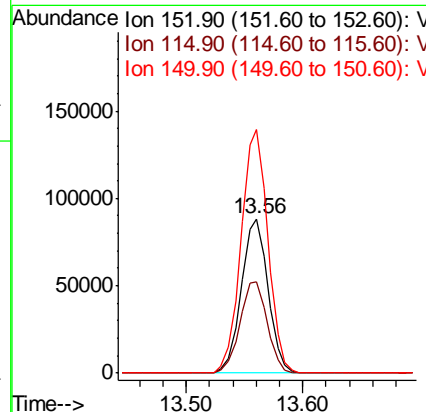
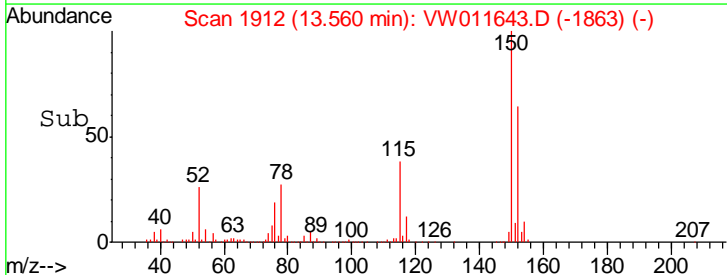
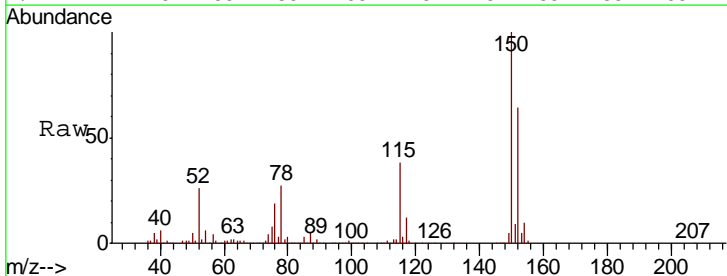
Instrument :  
 MSVOA\_W  
 ClientSampled :  
 1S-D2-(30)

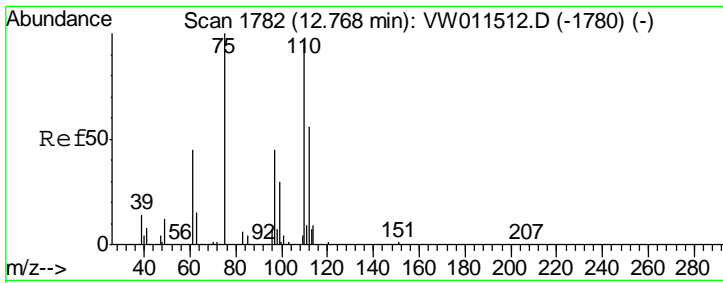
Tgt Ion	Resp	Lower	Upper
117	375793		
82	60.6	47.9	71.9
119	31.8	26.2	39.2



#72  
 1,4-Dichlorobenzene-d4  
 Concen: 50.000 ug/l  
 RT: 13.56 min Scan# 1912  
 Delta R.T. 0.00 min  
 Lab File: VW011643.D  
 Acq: 03 Aug 2019 02:34

Tgt Ion	Resp	Lower	Upper
152	140815		
115	60.7	30.5	91.5
150	158.7	0.0	352.6

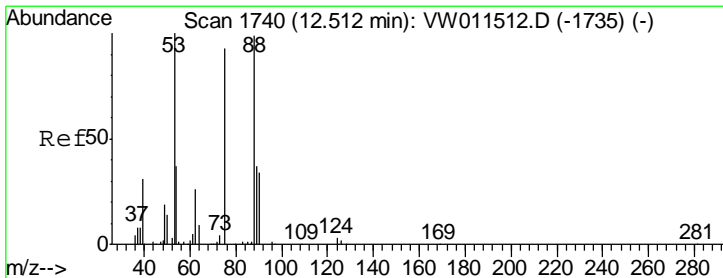
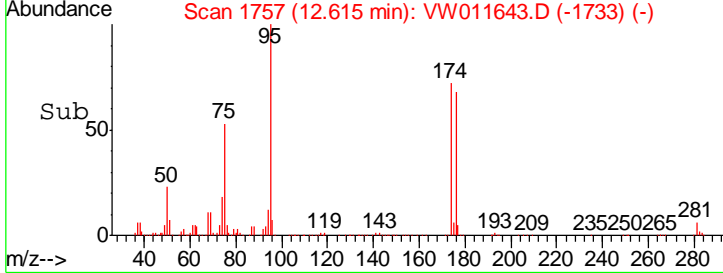
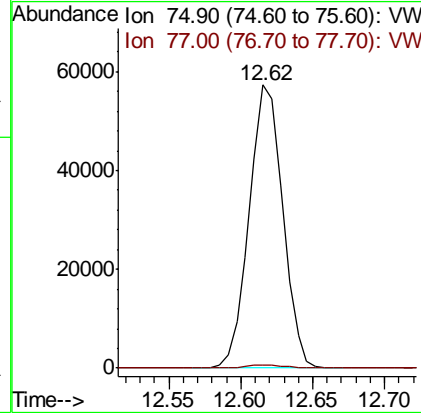
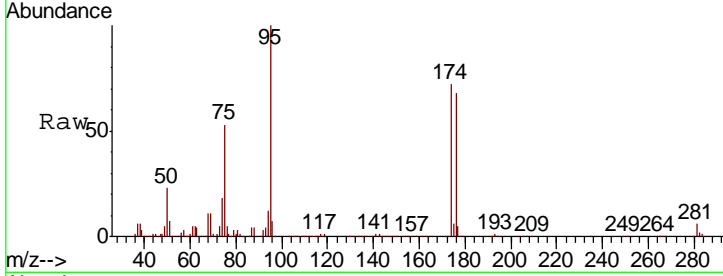




#76  
 1,2,3-Trichloropropane  
 Concen: 62.000 ug/l  
 RT: 12.62 min Scan# 1757  
 Delta R.T. -0.15 min  
 Lab File: VW011643.D  
 Acq: 03 Aug 2019 02:34

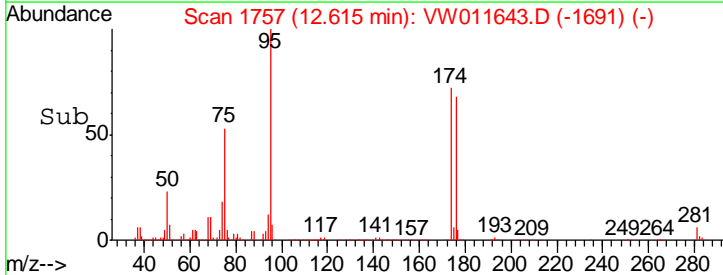
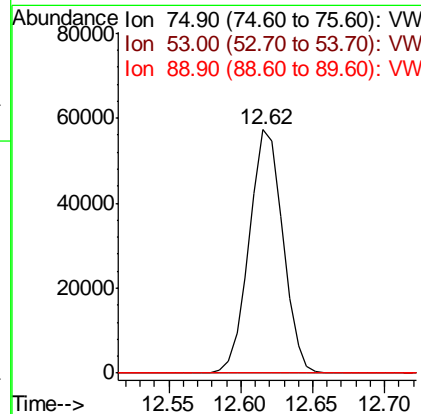
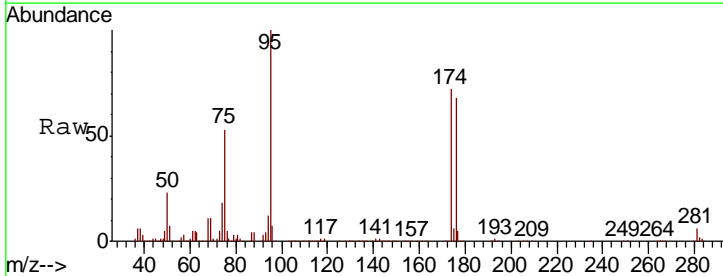
Instrument :  
 MSVOA\_W  
 ClientSampled :  
 1S-D2-(30)

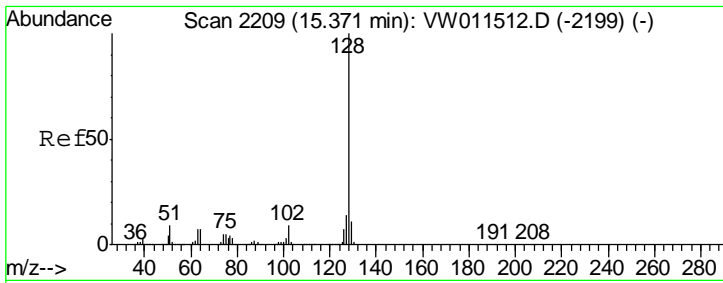
Tgt Ion	Resp	Lower	Upper
75	100		
77	1.2	0.0	0.0#



#81  
 trans-1,4-Dichloro-2-butene  
 Concen: 142.888 ug/l  
 RT: 12.62 min Scan# 1757  
 Delta R.T. 0.10 min  
 Lab File: VW011643.D  
 Acq: 03 Aug 2019 02:34

Tgt Ion	Resp	Lower	Upper
75	100		
53	0.1	88.0	132.0#
89	0.0	35.3	52.9#





#95  
 Naphthalene  
 Concen: 2.112 ug/l  
 RT: 15.36 min Scan# 2208  
 Delta R.T. -0.01 min  
 Lab File: VW011643.D  
 Acq: 03 Aug 2019 02:34

Instrument : MSVOA\_W  
 ClientSampleId : 1S-D2-(30)

Tgt Ion	Resp	Lower	Upper
128	100		
127	0.0	10.6	16.0#
129	0.0	8.6	13.0#

