

Data Path : Z:\voasrv\HPCHEM1\MSVOA_W\Data\VW080321\
 Data File : VW019663.D
 Acq On : 03 Aug 2021 16:42
 Operator : SY/VA
 Sample : VW0803SBL01
 Misc : 5.00g/5.00mL/MSVOA_W/SOIL
 ALS Vial : 10 Sample Multiplier: 1

Instrument :
 MSVOA_W
 ClientSampleId :
 VW0803SBL01

Quant Time: Aug 04 06:47:52 2021
 Quant Method : Z:\voasrv\HPCHEM1\MSVOA_W\Method\82W080321S.M
 Quant Title : SW846 8260
 QLast Update : Tue Aug 03 16:22:46 2021
 Response via : Initial Calibration

Compound	R.T.	QIon	Response	Conc	Units	Dev(Min)

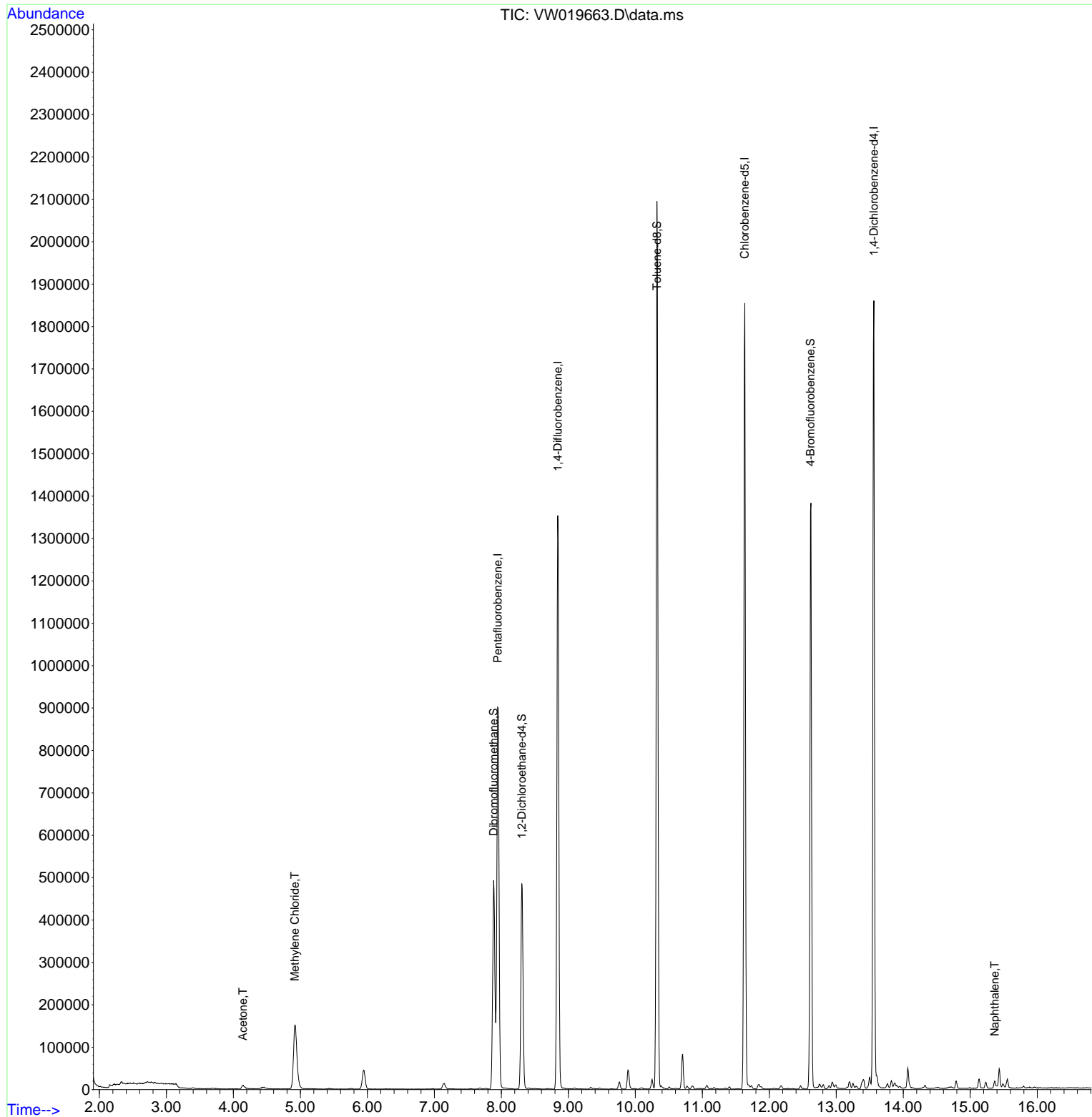
Internal Standards						
1) Pentafluorobenzene	7.945	168	647407	50.000	ug/l	0.00
34) 1,4-Difluorobenzene	8.842	114	1102250	50.000	ug/l	0.00
63) Chlorobenzene-d5	11.634	117	958455	50.000	ug/l	0.00
72) 1,4-Dichlorobenzene-d4	13.560	152	463060	50.000	ug/l	0.00
System Monitoring Compounds						
33) 1,2-Dichloroethane-d4	8.305	65	397883	48.306	ug/l	0.00
Spiked Amount	50.000	Range	50 - 163	Recovery	=	96.620%
35) Dibromofluoromethane	7.884	113	341895	46.926	ug/l	0.00
Spiked Amount	50.000	Range	54 - 147	Recovery	=	93.860%
50) Toluene-d8	10.323	98	1358504	47.713	ug/l	0.00
Spiked Amount	50.000	Range	49 - 140	Recovery	=	95.420%
62) 4-Bromofluorobenzene	12.615	95	470149	46.279	ug/l	0.00
Spiked Amount	50.000	Range	25 - 144	Recovery	=	92.560%
Target Compounds						
						Qvalue
16) Acetone	4.141	43	18634	15.312	ug/l	91
20) Methylene Chloride	4.915	84	132122	11.709	ug/l	97
95) Naphthalene	15.365	128	13498	5.066	ug/l	97

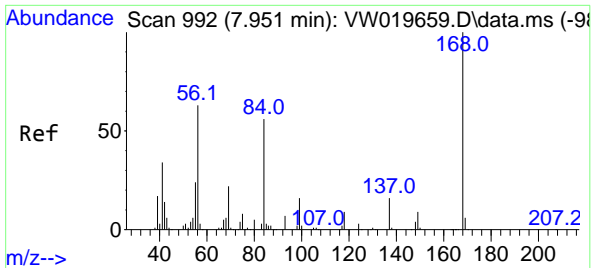
(#) = qualifier out of range (m) = manual integration (+) = signals summed

Data Path : Z:\voasrv\HPCHEM1\MSVOA_W\Data\VW080321\
 Data File : VW019663.D
 Acq On : 03 Aug 2021 16:42
 Operator : SY/VA
 Sample : VW0803SBL01
 Misc : 5.00g/5.00mL/MSVOA_W/SOIL
 ALS Vial : 10 Sample Multiplier: 1

Instrument :
 MSVOA_W
 ClientSampleId :
 VW0803SBL01

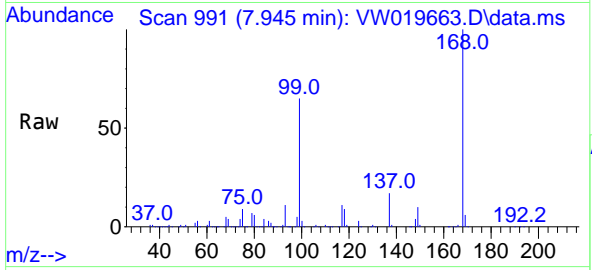
Quant Time: Aug 04 06:47:52 2021
 Quant Method : Z:\voasrv\HPCHEM1\MSVOA_W\Method\82W080321S.M
 Quant Title : SW846 8260
 QLast Update : Tue Aug 03 16:22:46 2021
 Response via : Initial Calibration



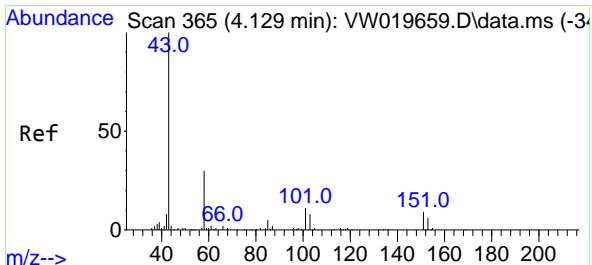
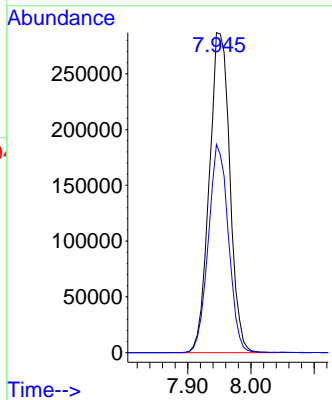
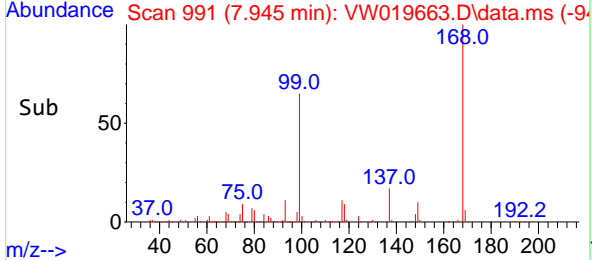


#1
 Pentafluorobenzene
 Concen: 50.000 ug/l
 RT: 7.945 min Scan# 991
 Delta R.T. -0.006 min
 Lab File: VW019663.D
 Acq: 03 Aug 2021 16:42

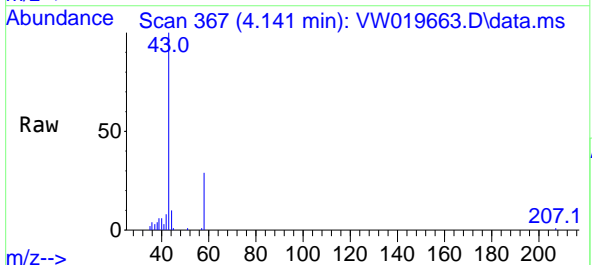
Instrument :
 MSVOA_W
 ClientSampleId :
 VW0803SBL01



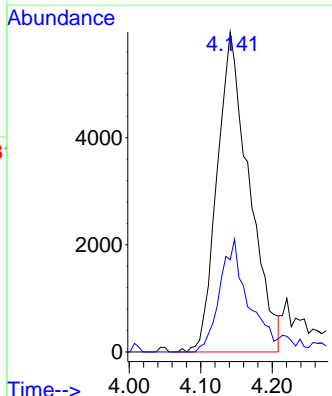
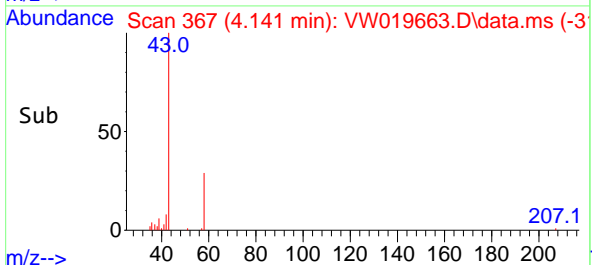
Tgt Ion:168 Resp: 647407
 Ion Ratio Lower Upper
 168 100
 99 65.1 51.9 77.9

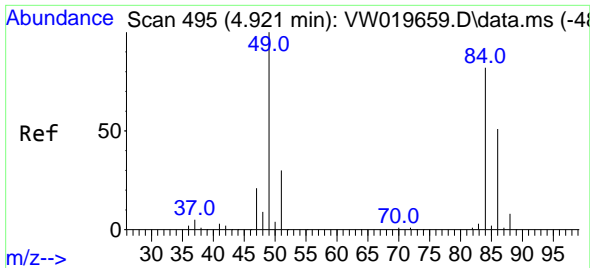


#16
 Acetone
 Concen: 15.312 ug/l
 RT: 4.141 min Scan# 367
 Delta R.T. 0.018 min
 Lab File: VW019663.D
 Acq: 03 Aug 2021 16:42



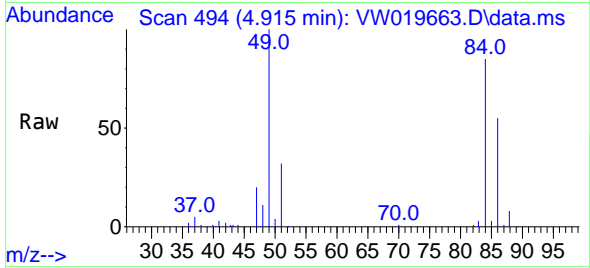
Tgt Ion: 43 Resp: 18634
 Ion Ratio Lower Upper
 43 100
 58 28.8 27.2 40.8



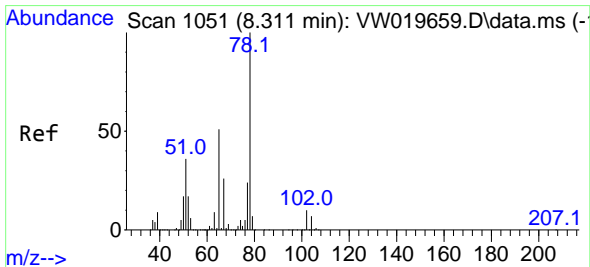
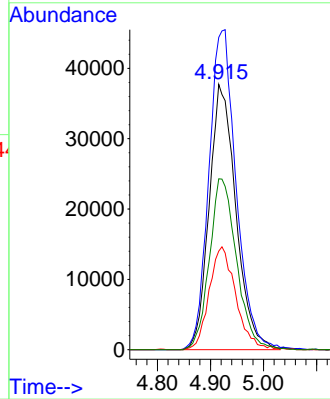
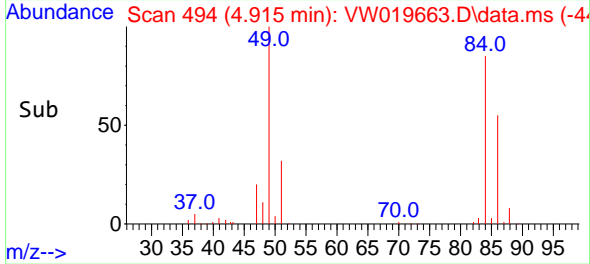


#20
Methylene Chloride
Concen: 11.709 ug/l
RT: 4.915 min Scan# 494
Delta R.T. -0.006 min
Lab File: VW019663.D
Acq: 03 Aug 2021 16:42

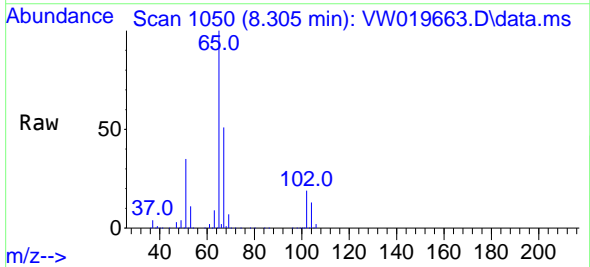
Instrument :
MSVOA_W
ClientSampled :
VW0803SBL01



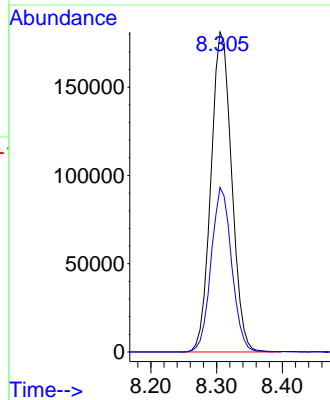
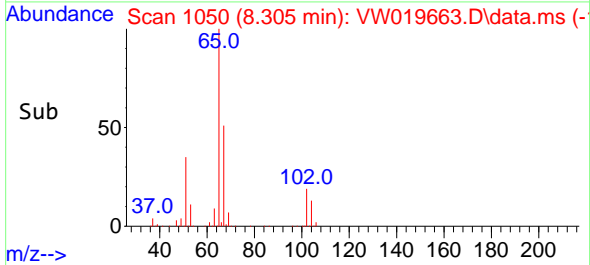
Tgt Ion: 84 Resp: 132122
Ion Ratio Lower Upper
84 100
49 117.7 97.2 145.8
51 37.1 30.1 45.1
86 64.4 49.9 74.9

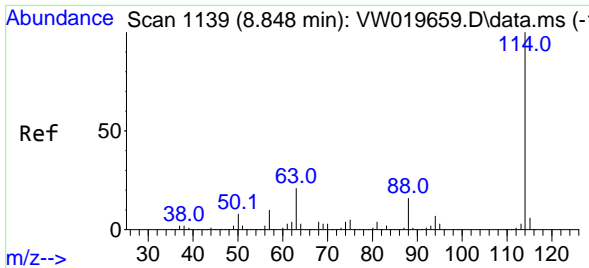


#33
1,2-Dichloroethane-d4
Concen: 48.306 ug/l
RT: 8.305 min Scan# 1050
Delta R.T. 0.000 min
Lab File: VW019663.D
Acq: 03 Aug 2021 16:42



Tgt Ion: 65 Resp: 397883
Ion Ratio Lower Upper
65 100
67 50.9 0.0 107.8



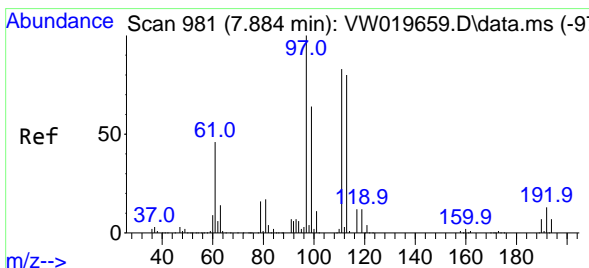
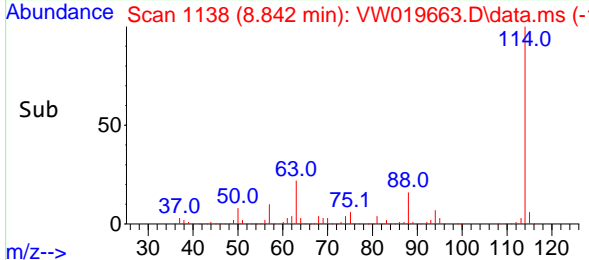
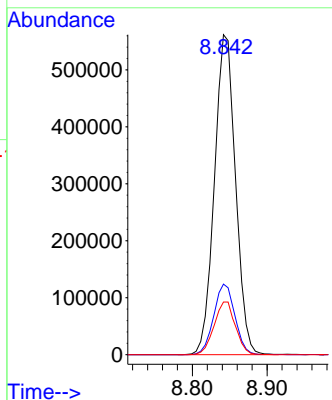
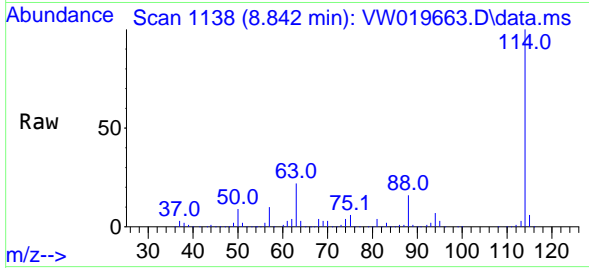


#34
 1,4-Difluorobenzene
 Concen: 50.000 ug/l
 RT: 8.842 min Scan# 1138
 Delta R.T. 0.001 min
 Lab File: VW019663.D
 Acq: 03 Aug 2021 16:42

Instrument :
 MSVOA_W
 ClientSampled :
 VW0803SBL01

Tgt Ion:114 Resp: 1102250

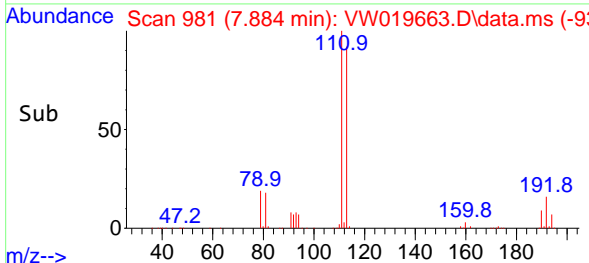
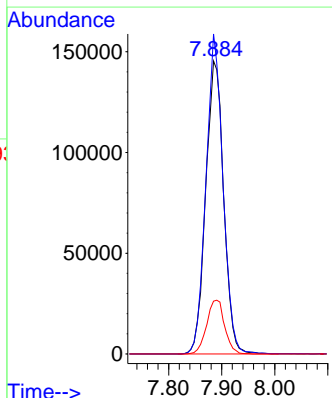
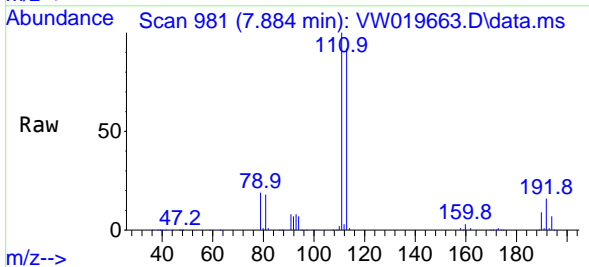
Ion	Ratio	Lower	Upper
114	100		
63	22.1	0.0	43.8
88	16.5	0.0	33.4

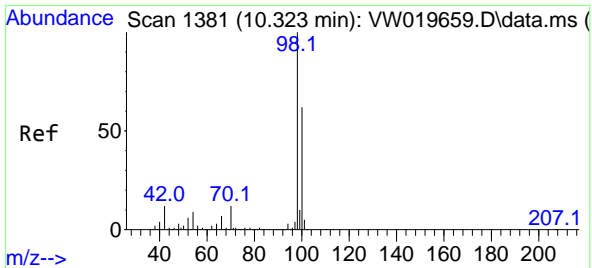


#35
 Dibromofluoromethane
 Concen: 46.926 ug/l
 RT: 7.884 min Scan# 981
 Delta R.T. -0.006 min
 Lab File: VW019663.D
 Acq: 03 Aug 2021 16:42

Tgt Ion:113 Resp: 341895

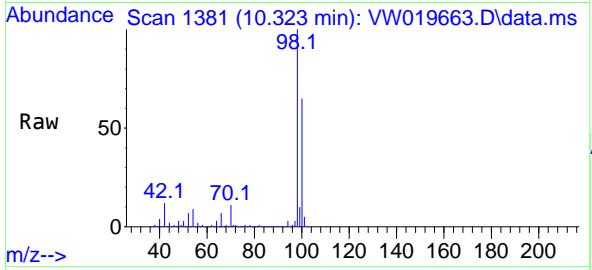
Ion	Ratio	Lower	Upper
113	100		
111	103.7	83.8	125.6
192	18.4	15.4	23.2



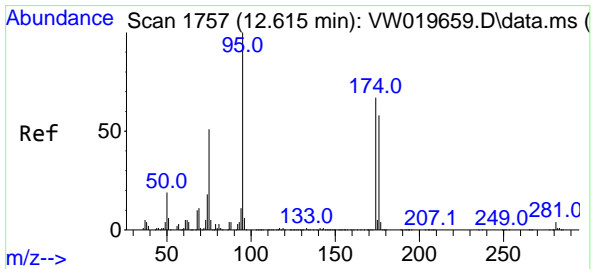
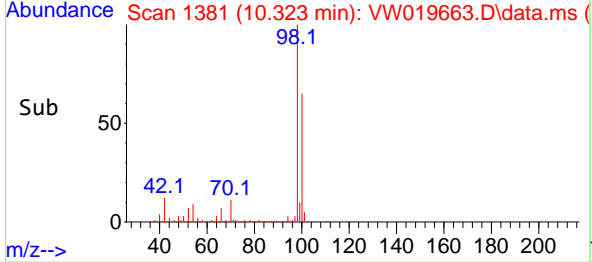
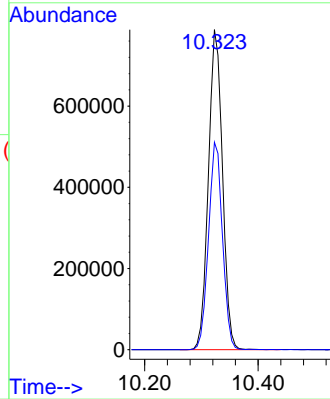


#50
 Toluene-d8
 Concen: 47.713 ug/l
 RT: 10.323 min Scan# 1381
 Delta R.T. 0.000 min
 Lab File: VW019663.D
 Acq: 03 Aug 2021 16:42

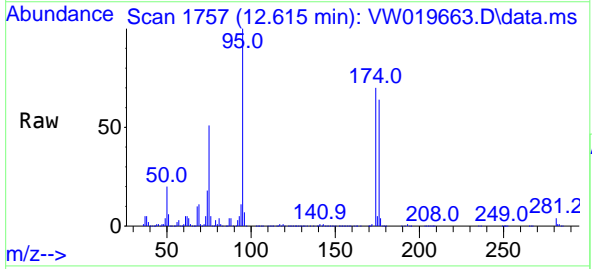
Instrument :
 MSVOA_W
 ClientSampled :
 VW0803SBL01



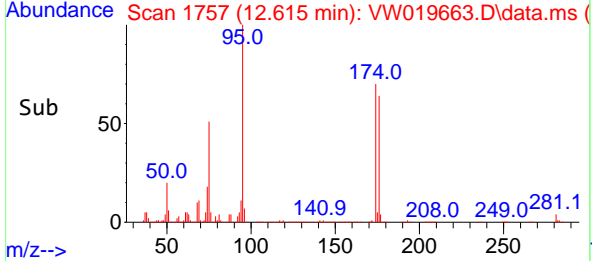
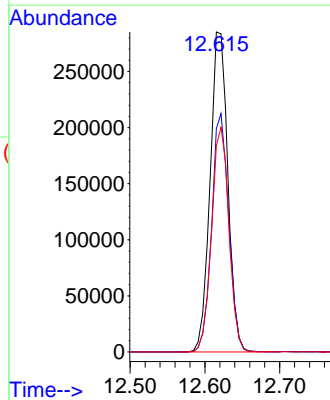
Tgt Ion: 98 Resp: 1358504
 Ion Ratio Lower Upper
 98 100
 100 64.4 52.2 78.4

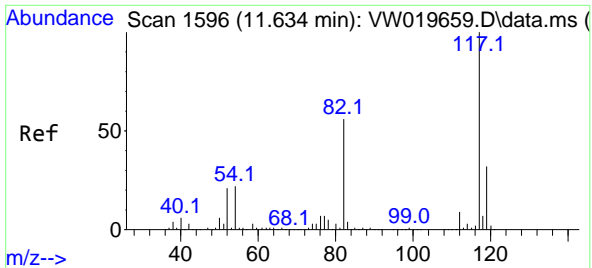


#62
 4-Bromofluorobenzene
 Concen: 46.279 ug/l
 RT: 12.615 min Scan# 1757
 Delta R.T. -0.006 min
 Lab File: VW019663.D
 Acq: 03 Aug 2021 16:42



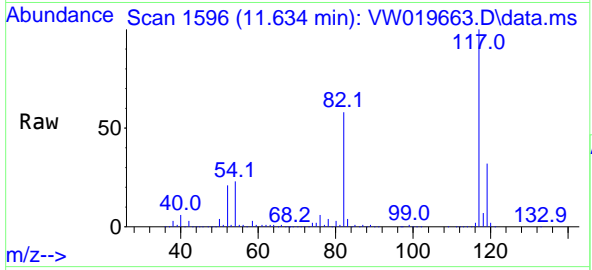
Tgt Ion: 95 Resp: 470149
 Ion Ratio Lower Upper
 95 100
 174 72.2 0.0 146.6
 176 68.7 0.0 136.8





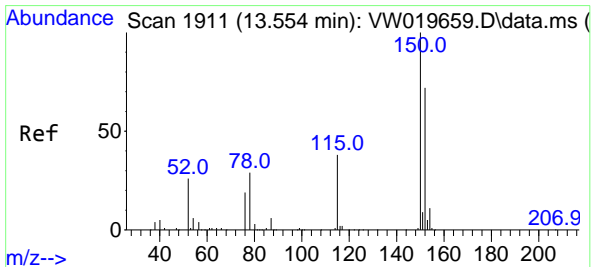
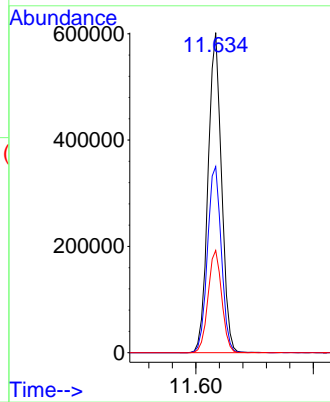
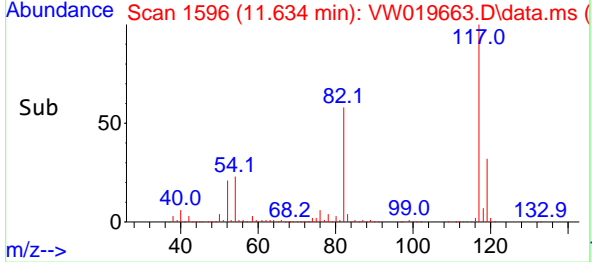
#63
 Chlorobenzene-d5
 Concen: 50.000 ug/l
 RT: 11.634 min Scan# 1596
 Delta R.T. -0.000 min
 Lab File: VW019663.D
 Acq: 03 Aug 2021 16:42

Instrument :
 MSVOA_W
 ClientSampled :
 VW0803SBL01

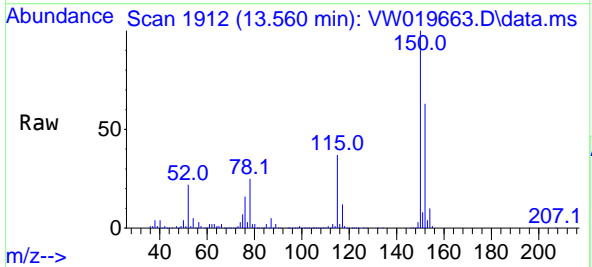


Tgt Ion:117 Resp: 958455

Ion	Ratio	Lower	Upper
117	100		
82	58.2	47.4	71.0
119	32.0	26.6	39.8

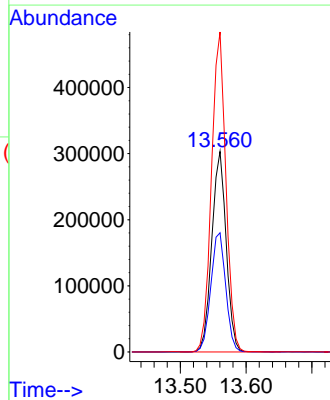
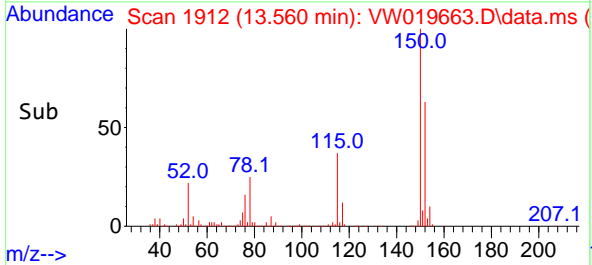


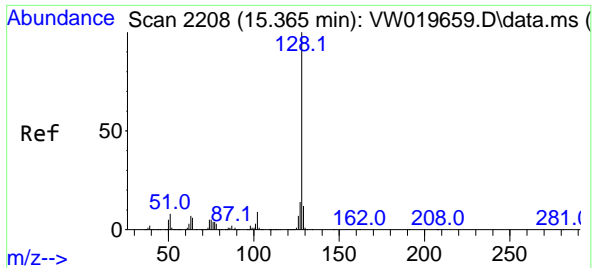
#72
 1,4-Dichlorobenzene-d4
 Concen: 50.000 ug/l
 RT: 13.560 min Scan# 1912
 Delta R.T. 0.006 min
 Lab File: VW019663.D
 Acq: 03 Aug 2021 16:42



Tgt Ion:152 Resp: 463060

Ion	Ratio	Lower	Upper
152	100		
115	61.3	30.6	91.8
150	159.1	0.0	342.4





#95
 Naphthalene
 Concen: 5.066 ug/l
 RT: 15.365 min Scan# 2208
 Delta R.T. -0.000 min
 Lab File: VW019663.D
 Acq: 03 Aug 2021 16:42

Instrument :
 MSVOA_W
 ClientSampled :
 VW0803SBL01

Tgt Ion:128 Resp: 13498

Ion	Ratio	Lower	Upper
128	100		
127	14.1	10.2	15.2
129	10.3	8.8	13.2

