

Data Path : Z:\VOASRV\HPCHEM1\MSVOA W\DATA\VW080419\
 Data File : VW011671.D
 Acq On : 03 Aug 2019 17:30
 Operator : SY/VA
 Sample : K4152-12
 Misc : 5.72G/5ML/MSVOA W/SOIL
 ALS Vial : 16 Sample Multiplier: 1

Instrument :
 MSVOA_W
 ClientSampleId :
 2S-E1-(0-1)

Quant Time: Aug 04 02:20:25 2019
 Quant Method : Z:\VOASRV\HPCHEM1\MSVOA_W\METHOD\82W072719S.M
 Quant Title : SW846 8260
 QLast Update : Sat Jul 27 00:23:30 2019
 Response via : Initial Calibration

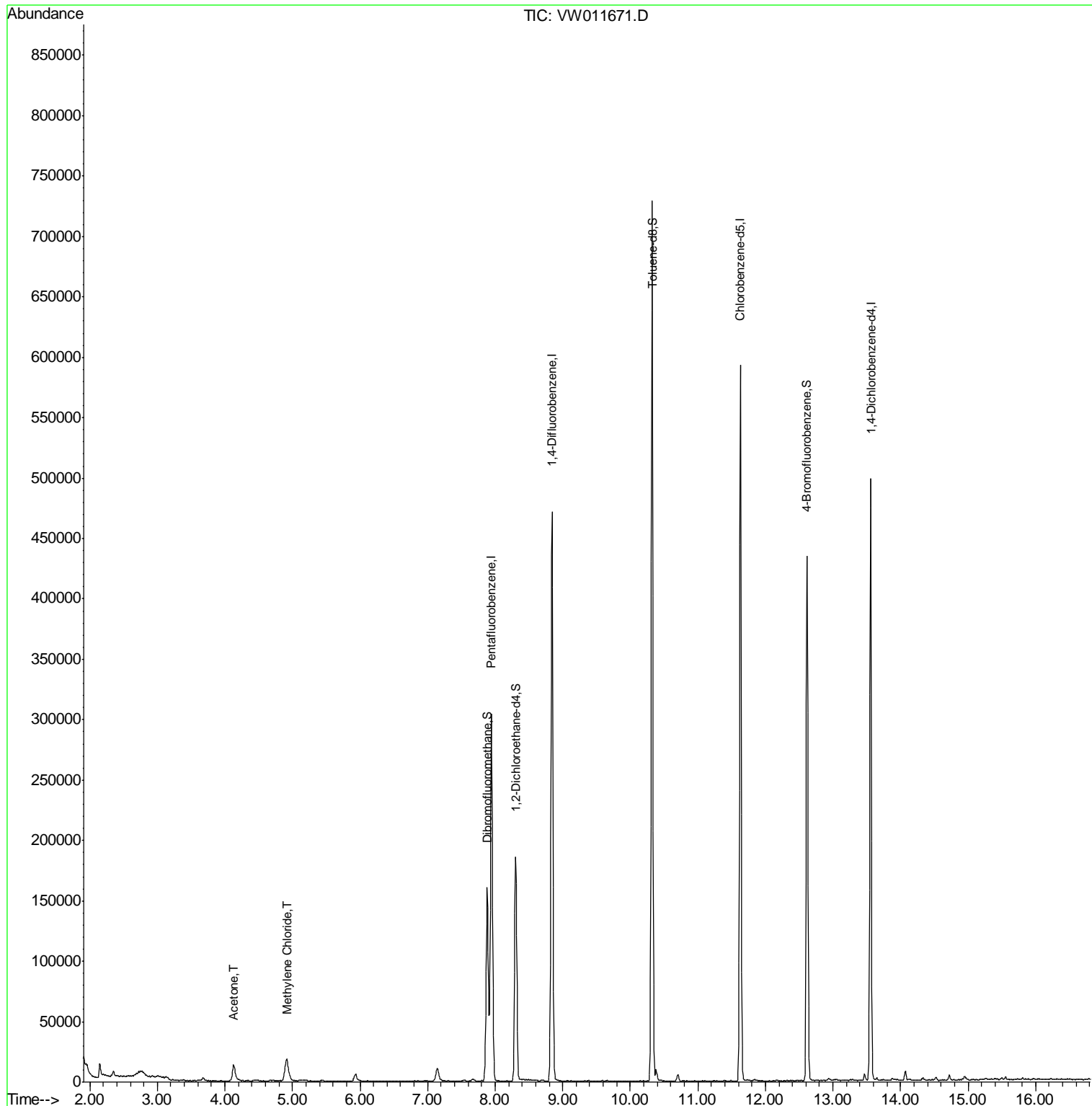
Internal Standards	R.T.	QIon	Response	Conc	Units	Dev(Min)
1) Pentafluorobenzene	7.95	168	217624	50.00	ug/l	0.00
34) 1,4-Difluorobenzene	8.84	114	370250	50.00	ug/l	0.00
63) Chlorobenzene-d5	11.63	117	310439	50.00	ug/l	0.00
72) 1,4-Dichlorobenzene-d4	13.56	152	121713	50.00	ug/l	0.00
System Monitoring Compounds						
33) 1,2-Dichloroethane-d4	8.30	65	146267	58.53	ug/l	0.00
Spiked Amount				50.000		
				Recovery	=	117.06%
35) Dibromofluoromethane	7.88	113	113475	54.63	ug/l	0.00
Spiked Amount				50.000		
				Recovery	=	109.26%
50) Toluene-d8	10.32	98	454557	53.45	ug/l	0.00
Spiked Amount				50.000		
				Recovery	=	106.90%
62) 4-Bromofluorobenzene	12.62	95	144989	47.82	ug/l	0.00
Spiked Amount				50.000		
				Recovery	=	95.64%
Target Compounds						
16) Acetone	4.13	43	27072	34.057	ug/l	93
20) Methylene Chloride	4.92	84	14571	5.315	ug/l	96

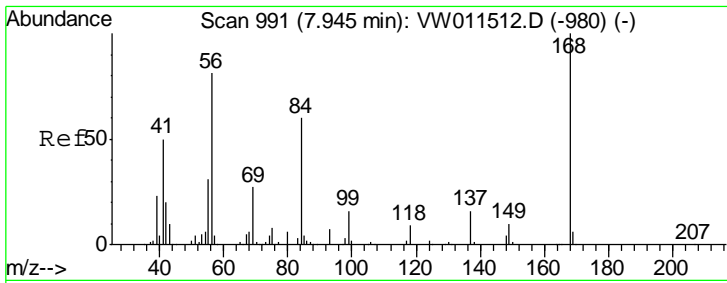
(#) = qualifier out of range (m) = manual integration (+) = signals summed

Data Path : Z:\VOASRV\HPCHEM1\MSVOA W\DATA\VW080419\
 Data File : VW011671.D
 Acq On : 03 Aug 2019 17:30
 Operator : SY/VA
 Sample : K4152-12
 Misc : 5.72G/5ML/MSVOA W/SOIL
 ALS Vial : 16 Sample Multiplier: 1

Instrument :
 MSVOA_W
 ClientSampleId :
 2S-E1-(0-1)

Quant Time: Aug 04 02:20:25 2019
 Quant Method : Z:\VOASRV\HPCHEM1\MSVOA_W\METHOD\82W072719S.M
 Quant Title : SW846 8260
 QLast Update : Sat Jul 27 00:23:30 2019
 Response via : Initial Calibration

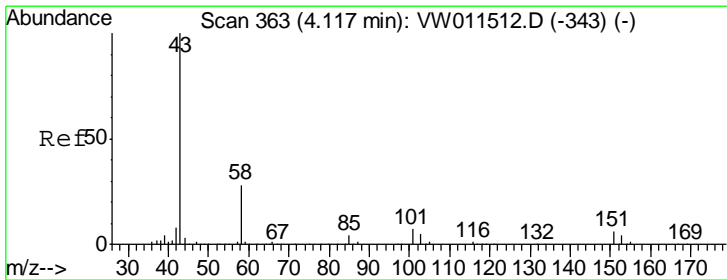
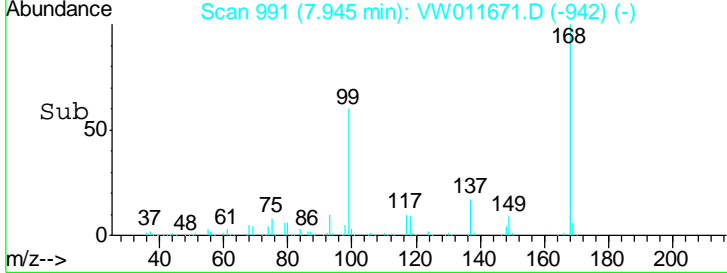
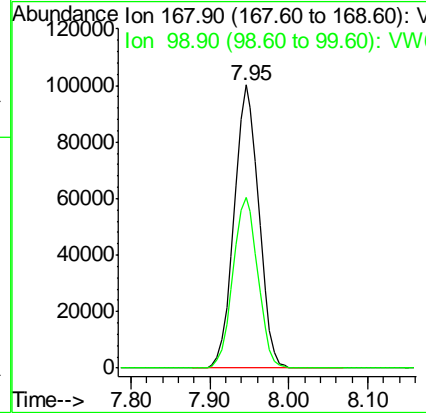
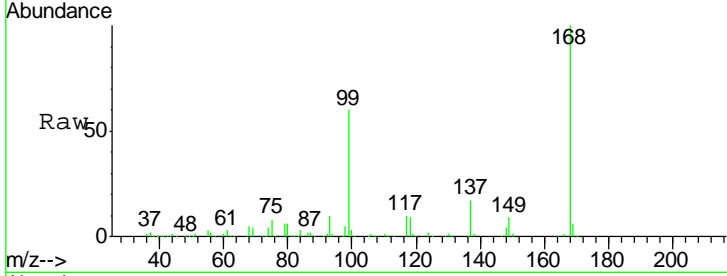




#1
 Pentafluorobenzene
 Concen: 50.000 ug/l
 RT: 7.95 min Scan# 991
 Delta R.T. -0.00 min
 Lab File: VW011671.D
 Acq: 03 Aug 2019 17:30

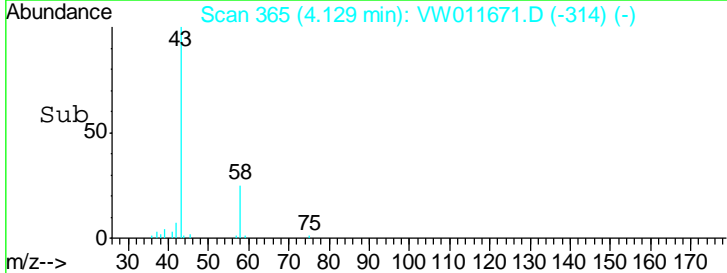
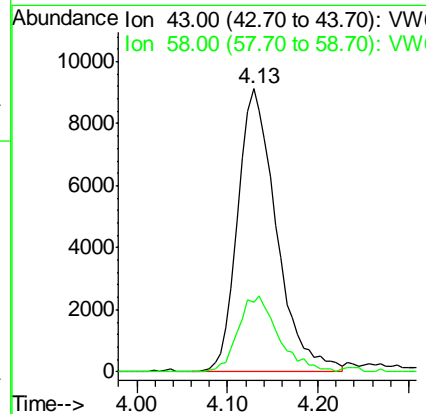
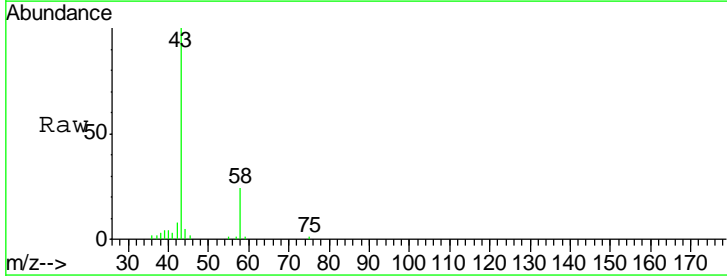
Instrument :
 MSVOA_W
 ClientSampled :
 2S-E1-(0-1)

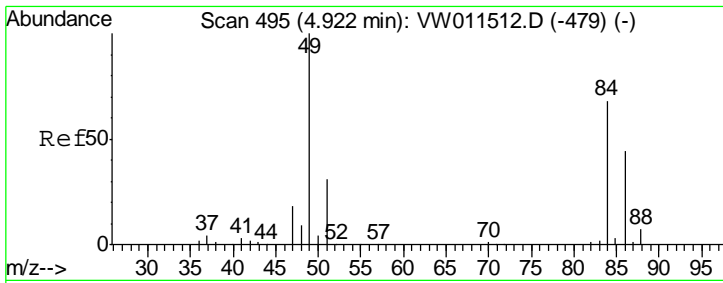
Tgt Ion: 168 Resp: 217624
 Ion Ratio Lower Upper
 168 100
 99 60.3 48.2 72.4



#16
 Acetone
 Concen: 34.057 ug/l
 RT: 4.13 min Scan# 365
 Delta R.T. 0.01 min
 Lab File: VW011671.D
 Acq: 03 Aug 2019 17:30

Tgt Ion: 43 Resp: 27072
 Ion Ratio Lower Upper
 43 100
 58 24.4 22.3 33.5

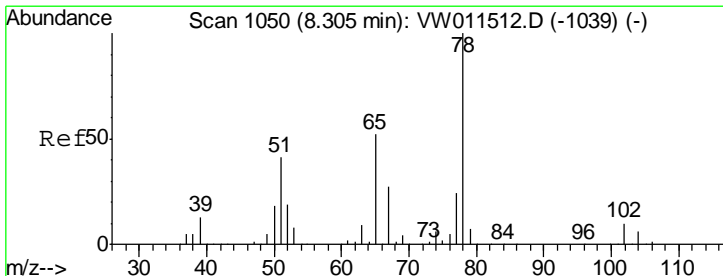
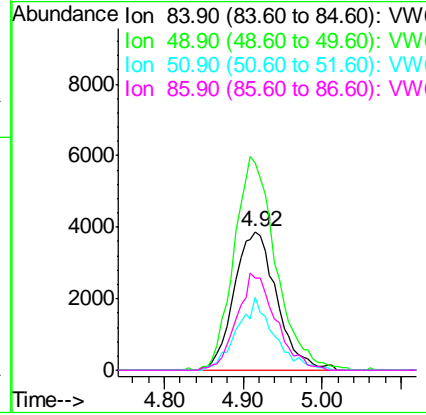
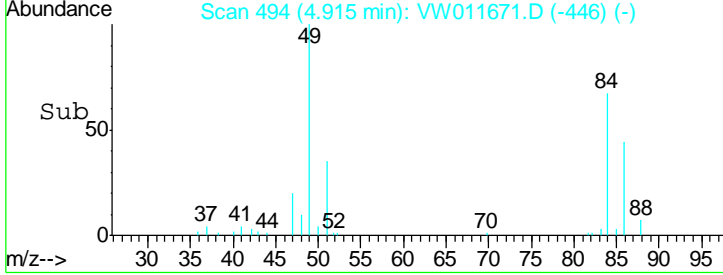
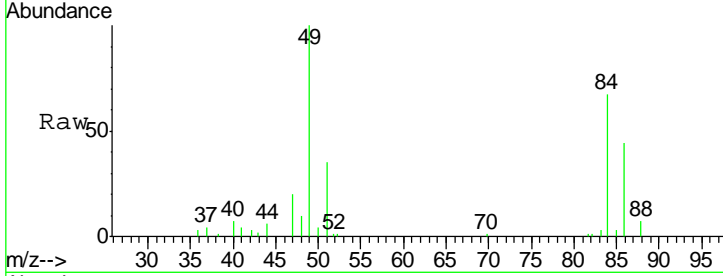




#20
 Methylene Chloride
 Concen: 5.315 ug/l
 RT: 4.92 min Scan# 494
 Delta R.T. -0.01 min
 Lab File: VW011671.D
 Acq: 03 Aug 2019 17:30

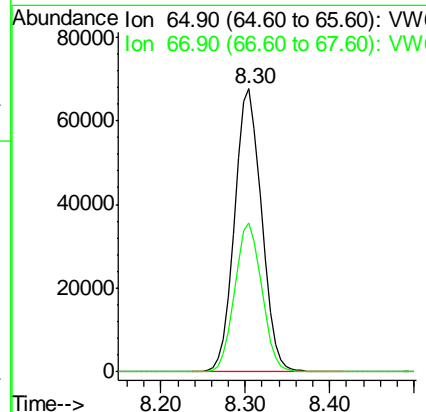
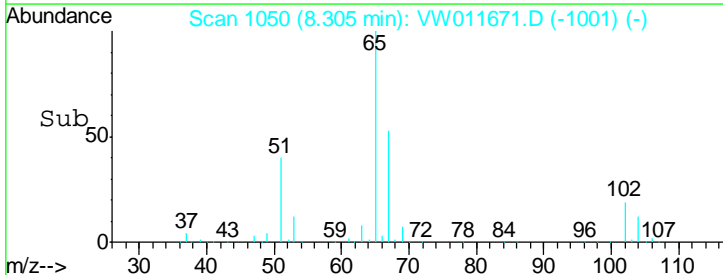
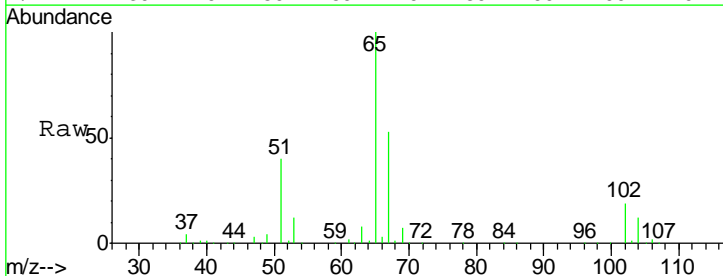
Instrument :
 MSVOA_W
ClientSampled :
 2S-E1-(0-1)

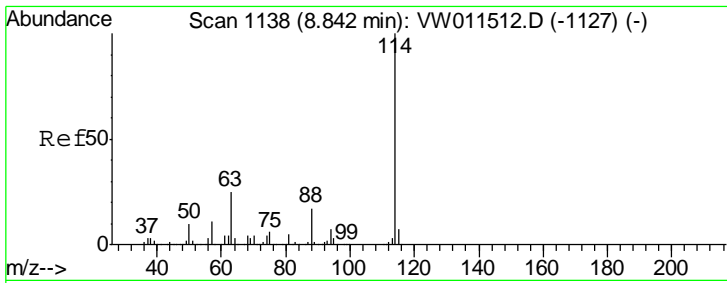
Tgt Ion	Resp	Lower	Upper
84	14571		
49	149.9	117.8	176.6
51	52.8	37.0	55.4
86	66.7	51.8	77.8



#33
 1,2-Dichloroethane-d4
 Concen: 58.532 ug/l
 RT: 8.30 min Scan# 1050
 Delta R.T. -0.00 min
 Lab File: VW011671.D
 Acq: 03 Aug 2019 17:30

Tgt Ion	Resp	Lower	Upper
65	146267		
67	52.7	0.0	105.2

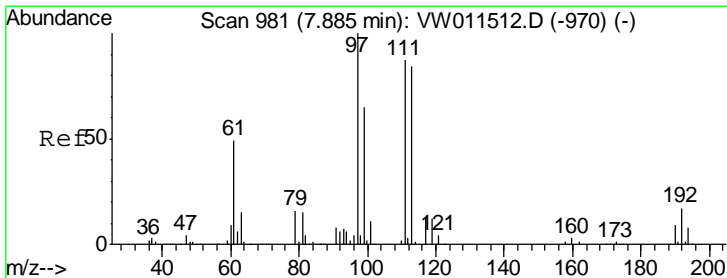
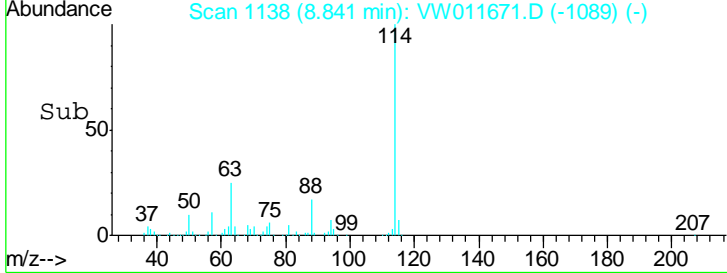
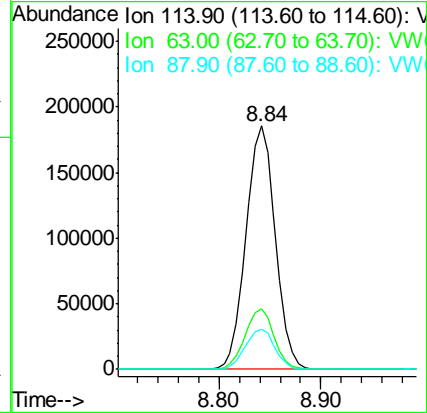
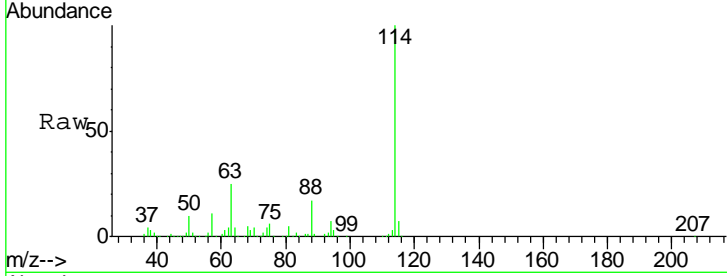




#34
 1,4-Difluorobenzene
 Concen: 50.000 ug/l
 RT: 8.84 min Scan# 1138
 Delta R.T. -0.00 min
 Lab File: VW011671.D
 Acq: 03 Aug 2019 17:30

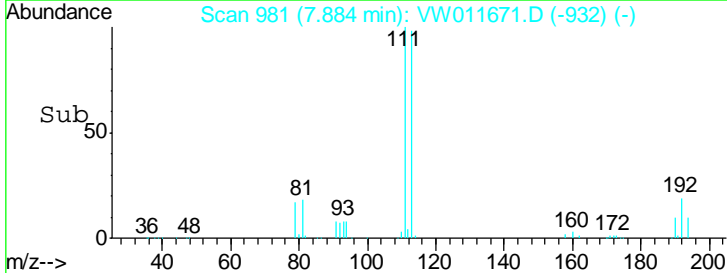
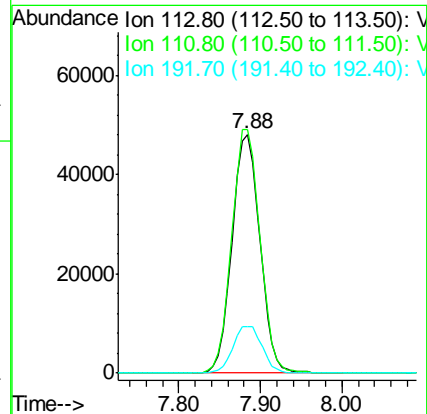
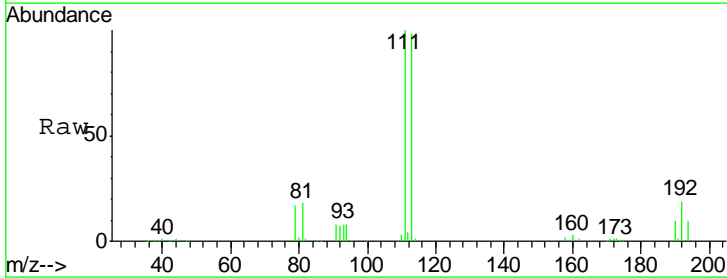
Instrument :
 MSVOA_W
 ClientSampled :
 2S-E1-(0-1)

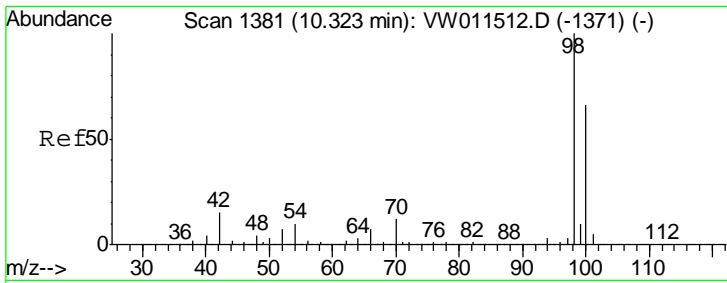
Tgt Ion	Resp	Lower	Upper
114	370250		
63	24.9	0.0	49.2
88	16.6	0.0	33.8



#35
 Dibromofluoromethane
 Concen: 54.630 ug/l
 RT: 7.88 min Scan# 981
 Delta R.T. -0.00 min
 Lab File: VW011671.D
 Acq: 03 Aug 2019 17:30

Tgt Ion	Resp	Lower	Upper
113	113475		
111	103.2	82.7	124.1
192	20.5	16.1	24.1

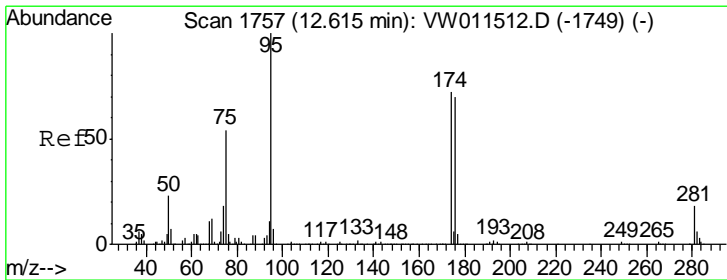
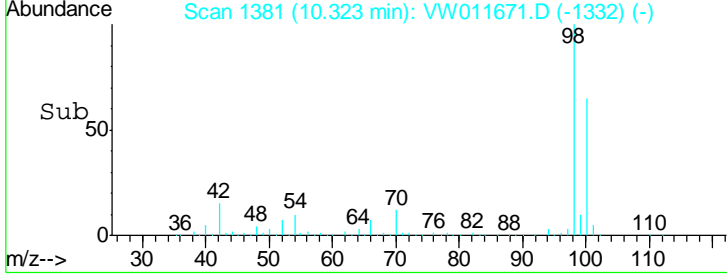
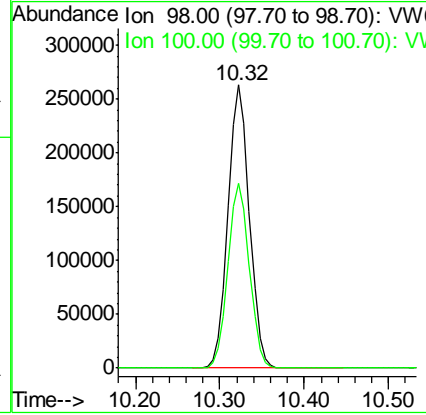
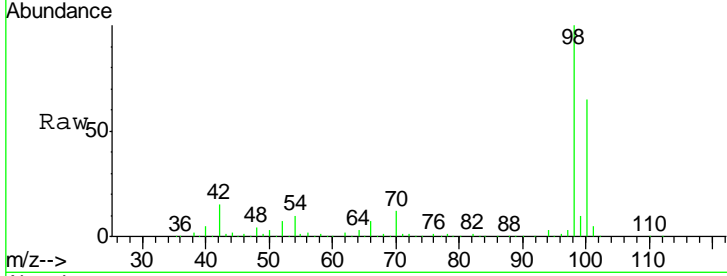




#50
 Toluene-d8
 Concen: 53.449 ug/l
 RT: 10.32 min Scan# 1381
 Delta R.T. -0.00 min
 Lab File: VW011671.D
 Acq: 03 Aug 2019 17:30

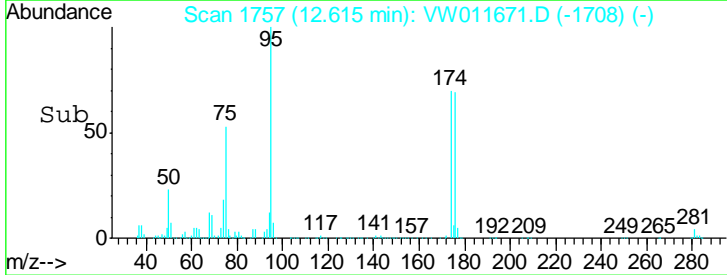
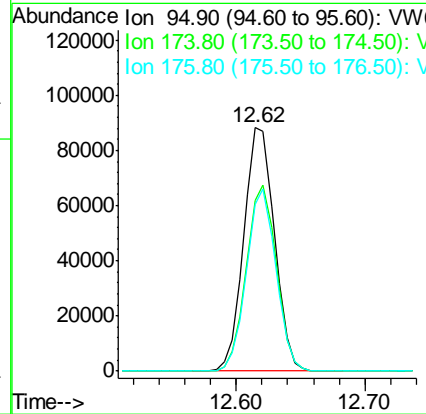
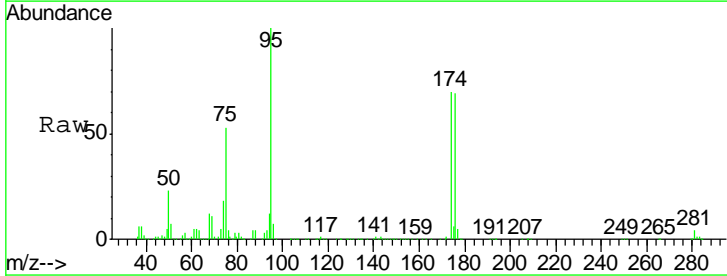
Instrument :
 MSVOA_W
 ClientSampled :
 2S-E1-(0-1)

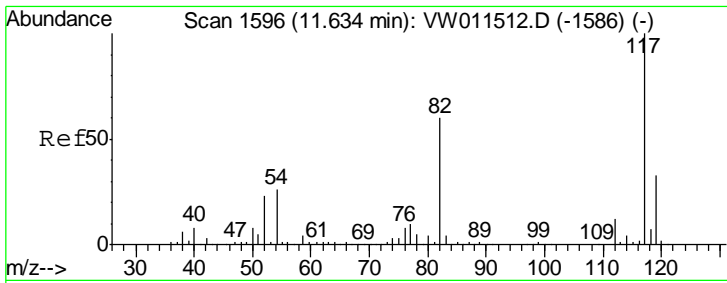
Tgt Ion: 98 Resp: 454557
 Ion Ratio Lower Upper
 98 100
 100 65.4 52.7 79.1



#62
 4-Bromofluorobenzene
 Concen: 47.819 ug/l
 RT: 12.62 min Scan# 1757
 Delta R.T. -0.00 min
 Lab File: VW011671.D
 Acq: 03 Aug 2019 17:30

Tgt Ion: 95 Resp: 144989
 Ion Ratio Lower Upper
 95 100
 174 75.1 0.0 150.2
 176 71.9 0.0 144.4

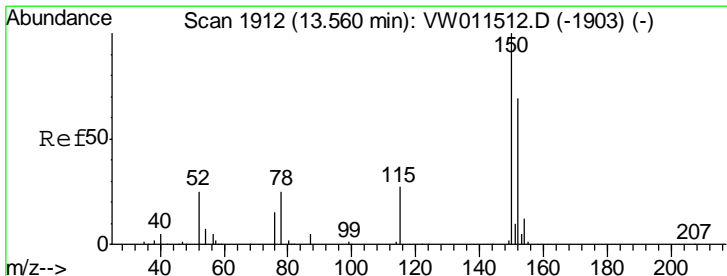
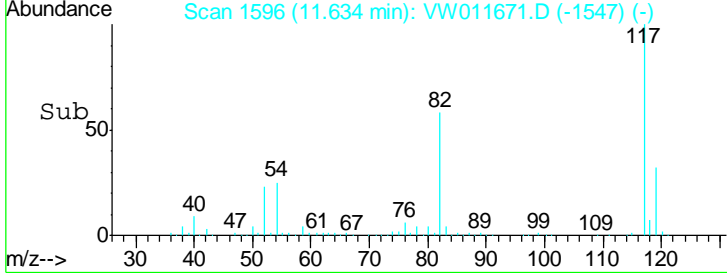
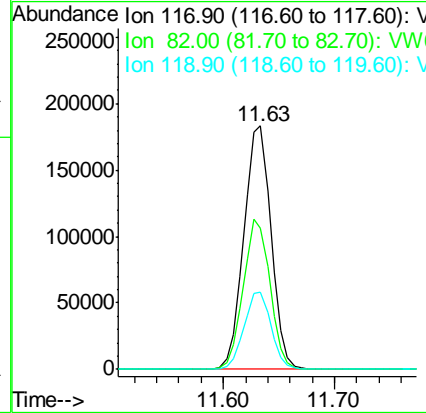
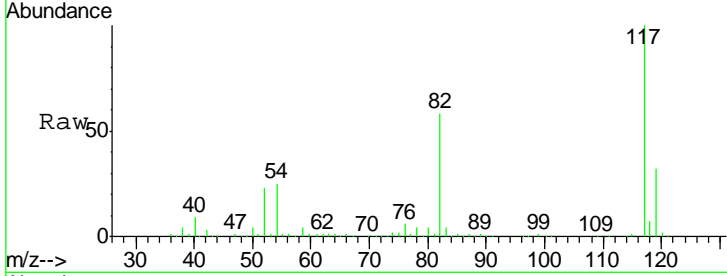




#63
 Chlorobenzene-d5
 Concen: 50.000 ug/l
 RT: 11.63 min Scan# 1596
 Delta R.T. -0.00 min
 Lab File: VW011671.D
 Acq: 03 Aug 2019 17:30

Instrument :
 MSVOA_W
 ClientSampled :
 2S-E1-(0-1)

Tgt Ion	Resp	Lower	Upper
117	310439		
82	58.1	47.9	71.9
119	31.9	26.2	39.2



#72
 1,4-Dichlorobenzene-d4
 Concen: 50.000 ug/l
 RT: 13.56 min Scan# 1912
 Delta R.T. -0.00 min
 Lab File: VW011671.D
 Acq: 03 Aug 2019 17:30

Tgt Ion	Resp	Lower	Upper
152	121713		
152	100		
115	60.4	30.5	91.5
150	157.1	0.0	352.6

