

Data Path : Z:\voasrv\HPCHEM1\MSVOA\_W\Data\VW080521\  
 Data File : VW019684.D  
 Acq On : 05 Aug 2021 15:38  
 Operator : SY/VA  
 Sample : M3264-05  
 Misc : 6.55g/10mL/MSVOA\_W/SOIL  
 ALS Vial : 16 Sample Multiplier: 1

Instrument :  
 MSVOA\_W  
 ClientSampleId :  
 GB644

Integration Parameters: LSCINT.P

Integrator: RTE  
 Smoothing : OFF Filtering: 5  
 Sampling : 1 Min Area: 0 % of largest Peak  
 Start Thrs: 0.2 Max Peaks: 100  
 Stop Thrs : 0 Peak Location: TOP

If leading or trailing edge < 100 prefer < Baseline drop else tangent >  
 Peak separation: 5

Method : Z:\voasrv\HPCHEM1\MSVOA\_W\Method\SFAMWLM070921SMA.M  
 Title : SFAM01.0

Signal : TIC: VW019684.D\data.ms

peak #	R.T. min	first scan	max scan	last scan	PK TY	peak height	corr. area	corr. % max.	% of total
1	2.361	69	75	90	rVB	131739	258037	12.47%	1.629%
2	2.897	155	163	177	rVB	100079	233866	11.30%	1.476%
3	3.397	238	245	251	rBV5	1151	2936	0.14%	0.019%
4	3.562	263	272	276	rBV3	1900	5594	0.27%	0.035%
5	3.599	276	278	283	rVB4	865	1050	0.05%	0.007%
6	4.025	335	348	361	rBV	211737	657856	31.78%	4.152%
7	4.275	380	389	396	rBV4	1803	5476	0.26%	0.035%
8	4.324	396	397	403	rVB2	619	458	0.02%	0.003%
9	4.397	403	409	417	rBV4	1298	3608	0.17%	0.023%
10	4.921	482	495	515	rBV2	39823	144571	6.98%	0.912%
11	5.117	522	527	529	rBV3	539	892	0.04%	0.006%
12	5.159	533	534	537	rVB	493	317	0.02%	0.002%
13	5.397	563	573	574	rBV	1673	3617	0.17%	0.023%
14	5.549	582	598	624	rVB	39988	223623	10.80%	1.411%
15	5.952	655	664	674	rVB3	9387	29208	1.41%	0.184%
16	6.025	674	676	678	rBV	306	317	0.02%	0.002%
17	6.098	687	688	691	rBV2	287	395	0.02%	0.002%
18	6.190	702	703	708	rVB2	392	336	0.02%	0.002%
19	6.513	753	756	759	rBV	269	347	0.02%	0.002%
20	6.915	821	822	825	rVV2	499	363	0.02%	0.002%
21	7.080	838	849	868	rBV	73042	215014	10.39%	1.357%
22	7.543	924	925	932	rVB2	404	395	0.02%	0.002%
23	7.653	932	943	954	rBV	345388	843843	40.77%	5.326%
24	7.768	961	962	966	rVB3	630	631	0.03%	0.004%
25	7.951	987	992	1001	rVB8	1446	3417	0.17%	0.022%
26	8.067	1006	1011	1015	rBV3	322	559	0.03%	0.004%
27	8.281	1035	1046	1065	rBV2	691353	2069870	100.00%	13.063%
28	8.439	1071	1072	1075	rVB2	549	343	0.02%	0.002%
29	8.512	1082	1084	1087	rVB3	401	437	0.02%	0.003%
30	8.628	1097	1103	1106	rBV4	656	1207	0.06%	0.008%
31	8.689	1109	1113	1120	rVV4	904	1810	0.09%	0.011%
32	8.841	1129	1138	1154	rBV	599742	1202828	58.11%	7.591%
33	8.951	1154	1156	1158	rVV3	589	636	0.03%	0.004%
34	8.969	1158	1159	1161	rVV2	448	416	0.02%	0.003%
35	9.030	1167	1169	1170	rVV3	544	429	0.02%	0.003%
36	9.079	1170	1177	1183	rVV7	2186	5100	0.25%	0.032%

Data Path : Z:\voasrv\HPCHEM1\MSVOA\_W\Data\VW080521\  
 Data File : VW019684.D  
 Acq On : 05 Aug 2021 15:38  
 Operator : SY/VA  
 Sample : M3264-05  
 Misc : 6.55g/10mL/MSVOA\_W/SOIL  
 ALS Vial : 16 Sample Multiplier: 1

Instrument :  
 MSVOA\_W  
 ClientSampleId :  
 GB644

Integration Parameters: LSCINT.P

Integrator: RTE  
 Smoothing : OFF Filtering: 5  
 Sampling : 1 Min Area: 0 % of largest Peak  
 Start Thrs: 0.2 Max Peaks: 100  
 Stop Thrs : 0 Peak Location: TOP

If leading or trailing edge < 100 prefer < Baseline drop else tangent >  
 Peak separation: 5

Method : Z:\voasrv\HPCHEM1\MSVOA\_W\Method\SFAMWLM070921SMA.M  
 Title : SFAM01.0

37	9.274	1198	1209	1220	rBV	476030	962822	46.52%	6.076%
38	9.408	1229	1231	1241	rVB4	1166	2619	0.13%	0.017%
39	9.664	1268	1273	1277	rVV3	1600	3092	0.15%	0.020%
40	10.036	1325	1334	1344	rBV	263492	477152	23.05%	3.011%
41	10.122	1344	1348	1354	rVB6	1376	2934	0.14%	0.019%
42	10.323	1370	1381	1388	rBV	970150	1722347	83.21%	10.870%
43	10.390	1388	1392	1399	rVB	20285	35018	1.69%	0.221%
44	10.512	1406	1412	1416	rBV4	457	876	0.04%	0.006%
45	10.579	1416	1423	1433	rBV	185605	314540	15.20%	1.985%
46	10.707	1436	1444	1450	rBV	45029	81056	3.92%	0.512%
47	10.865	1463	1470	1474	rBV	64573	113052	5.46%	0.713%
48	10.926	1474	1480	1498	rVV	308534	522773	25.26%	3.299%
49	11.073	1500	1504	1511	rVB4	5135	8888	0.43%	0.056%
50	11.634	1588	1596	1606	rBV	890478	1499323	72.44%	9.462%
51	11.835	1623	1629	1640	rVB5	2626	5713	0.28%	0.036%
52	12.060	1664	1666	1667	rVB2	486	320	0.02%	0.002%
53	12.170	1679	1684	1691	rVB7	2115	4246	0.21%	0.027%
54	12.243	1691	1696	1703	rVB4	1103	1737	0.08%	0.011%
55	12.341	1708	1712	1719	rVB4	1953	3250	0.16%	0.021%
56	12.414	1721	1724	1725	rBV2	291	369	0.02%	0.002%
57	12.463	1729	1732	1735	rBV3	736	1056	0.05%	0.007%
58	12.499	1735	1738	1742	rVB4	542	758	0.04%	0.005%
59	12.609	1745	1756	1762	rBV2	65672	126641	6.12%	0.799%
60	12.694	1762	1770	1777	rBV	426953	713392	34.47%	4.502%
61	12.755	1777	1780	1793	rVB5	5943	12569	0.61%	0.079%
62	12.890	1796	1802	1806	rBV4	3089	5904	0.29%	0.037%
63	12.938	1806	1810	1812	rBV4	3497	5730	0.28%	0.036%
64	13.005	1819	1821	1828	rVB4	1630	2606	0.13%	0.016%
65	13.188	1844	1851	1856	rBV2	7343	11999	0.58%	0.076%
66	13.280	1857	1866	1874	rVB6	5690	18253	0.88%	0.115%
67	13.402	1878	1886	1893	rBV3	13357	27512	1.33%	0.174%
68	13.469	1893	1897	1898	rBV4	2288	2685	0.13%	0.017%
69	13.560	1904	1912	1918	rBV	919538	1497027	72.32%	9.448%
70	13.645	1922	1926	1940	rVB	61441	103120	4.98%	0.651%
71	13.761	1941	1945	1951	rVB6	5510	10081	0.49%	0.064%
72	13.853	1953	1960	1971	rVB	908058	1493324	72.15%	9.425%
73	14.017	1985	1987	1989	rBV3	778	871	0.04%	0.005%
74	14.066	1989	1995	2001	rVV2	24634	42651	2.06%	0.269%
75	14.194	2014	2016	2018	rVB2	679	507	0.02%	0.003%
76	14.322	2032	2037	2045	rVB5	18164	29523	1.43%	0.186%

Data Path : Z:\voasrv\HPCHEM1\MSVOA\_W\Data\VW080521\  
 Data File : VW019684.D  
 Acq On : 05 Aug 2021 15:38  
 Operator : SY/VA  
 Sample : M3264-05  
 Misc : 6.55g/10mL/MSVOA\_W/SOIL  
 ALS Vial : 16 Sample Multiplier: 1

Instrument :  
 MSVOA\_W  
 ClientSampleId :  
 GB644

Integration Parameters: LSCINT.P

Integrator: RTE  
 Smoothing : OFF Filtering: 5  
 Sampling : 1 Min Area: 0 % of largest Peak  
 Start Thrs: 0.2 Max Peaks: 100  
 Stop Thrs : 0 Peak Location: TOP

If leading or trailing edge < 100 prefer < Baseline drop else tangent >  
 Peak separation: 5

Method : Z:\voasrv\HPCHEM1\MSVOA\_W\Method\SFAMWLM070921SMA.M  
 Title : SFAM01.0

77	14.517	2061	2069	2078	rVB8	3030	8353	0.40%	0.053%
78	14.621	2083	2086	2092	rVB2	3368	4582	0.22%	0.029%
79	14.694	2095	2098	2099	rBV2	743	746	0.04%	0.005%
80	14.950	2138	2140	2145	rVB3	699	943	0.05%	0.006%
81	14.987	2145	2146	2149	rBV3	387	391	0.02%	0.002%
82	15.127	2165	2169	2174	rBV5	2865	5148	0.25%	0.032%
83	15.176	2174	2177	2185	rVB6	3858	7175	0.35%	0.045%
84	15.237	2185	2187	2189	rBV3	598	671	0.03%	0.004%
85	15.365	2203	2208	2211	rBV3	3013	5243	0.25%	0.033%
86	15.407	2211	2215	2217	rVB5	976	1399	0.07%	0.009%
87	15.487	2220	2228	2233	rBV	4960	9820	0.47%	0.062%
88	15.548	2234	2238	2245	rVB5	2678	4871	0.24%	0.031%
89	15.730	2266	2268	2272	rBV3	342	436	0.02%	0.003%
90	15.785	2276	2277	2282	rVB3	562	623	0.03%	0.004%
91	15.913	2296	2298	2301	rBV3	419	373	0.02%	0.002%
92	15.944	2301	2303	2307	rBV4	709	1026	0.05%	0.006%
93	15.980	2307	2309	2312	rVB3	627	553	0.03%	0.003%
94	16.023	2314	2316	2317	rBV	433	339	0.02%	0.002%
95	16.096	2322	2328	2333	rBV5	788	1647	0.08%	0.010%
96	16.176	2339	2341	2343	rBV3	454	481	0.02%	0.003%
97	16.267	2354	2356	2358	rBV2	518	452	0.02%	0.003%
98	16.462	2385	2388	2390	rVB3	610	540	0.03%	0.003%
99	16.535	2397	2400	2402	rBV3	441	490	0.02%	0.003%
100	16.596	2407	2410	2411	rBV	584	610	0.03%	0.004%

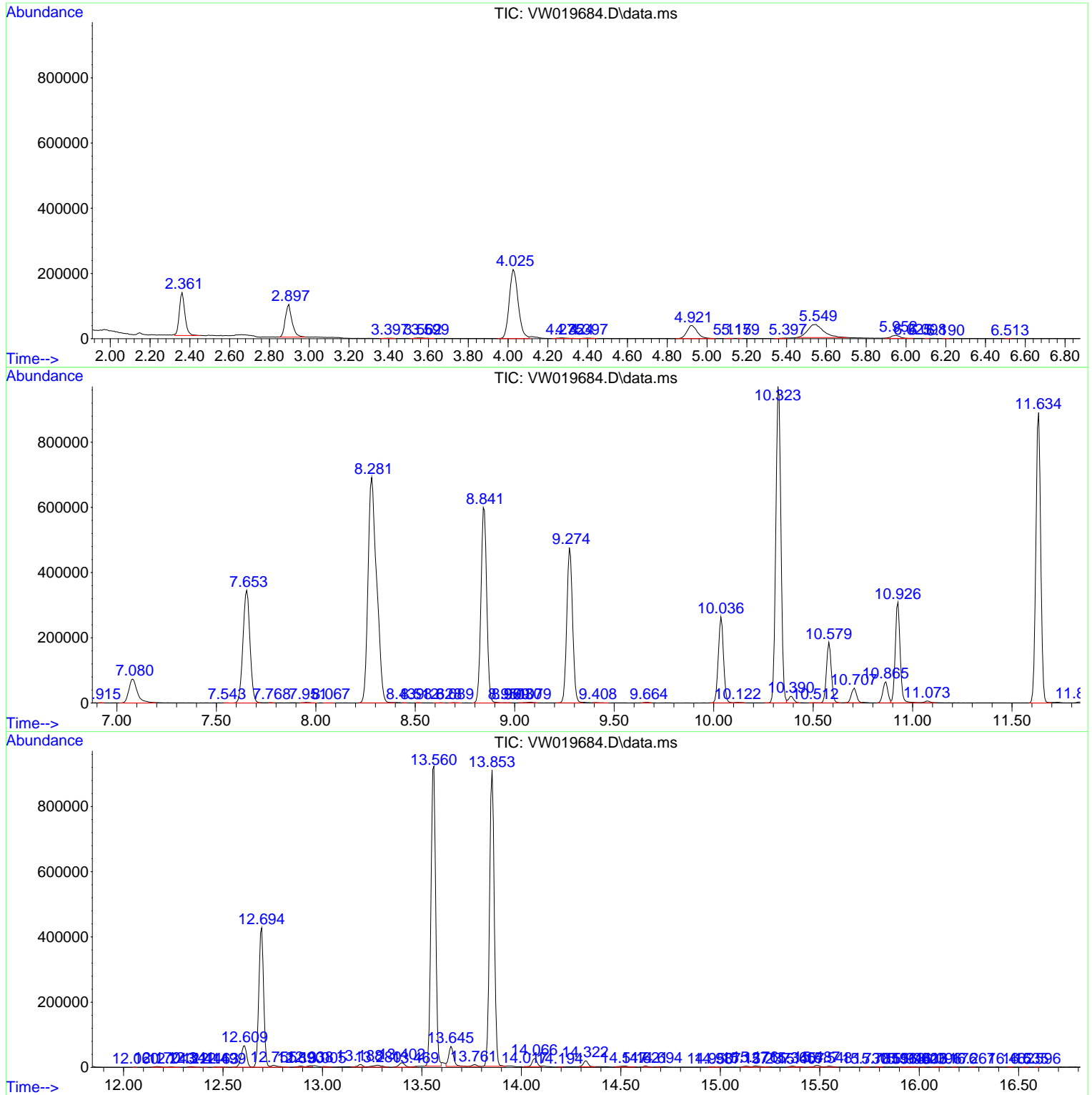
Sum of corrected areas: 15845050

Data Path : Z:\voasrv\HPCHEM1\MSVOA\_W\Data\VW080521\  
 Data File : VW019684.D  
 Acq On : 05 Aug 2021 15:38  
 Operator : SY/VA  
 Sample : M3264-05  
 Misc : 6.55g/10mL/MSVOA\_W/SOIL  
 ALS Vial : 16 Sample Multiplier: 1

**Instrument :**  
 MSVOA\_W  
**ClientSampleID :**  
 GB644

Quant Method : Z:\voasrv\HPCHEM1\MSVOA\_W\Method\SFAMWLM070921SMA.M  
 Quant Title : SFAM01.0

TIC Library : C:\Database\NIST20.L  
 TIC Integration Parameters: LSCINT.P



Data Path : Z:\voasrv\HPCHEM1\MSVOA\_W\Data\VW080521\  
 Data File : VW019684.D  
 Acq On : 05 Aug 2021 15:38  
 Operator : SY/VA  
 Sample : M3264-05  
 Misc : 6.55g/10mL/MSVOA\_W/SOIL  
 ALS Vial : 16 Sample Multiplier: 1

Instrument :  
 MSVOA\_W  
 ClientSampleID :  
 GB644

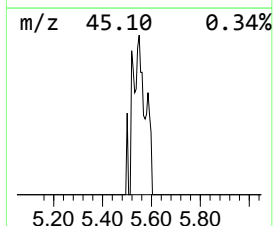
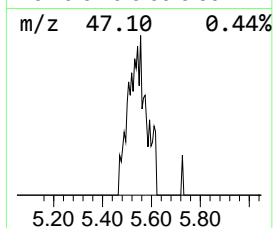
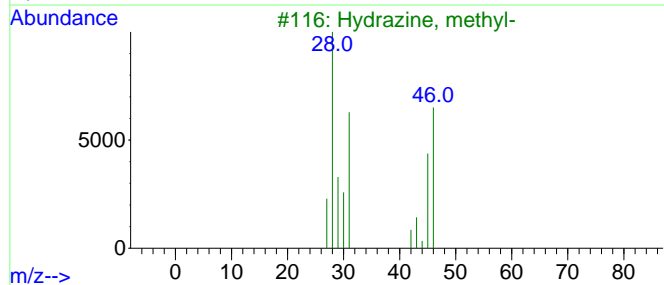
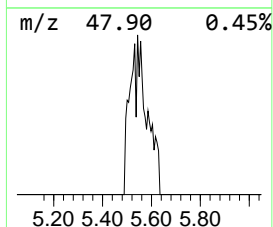
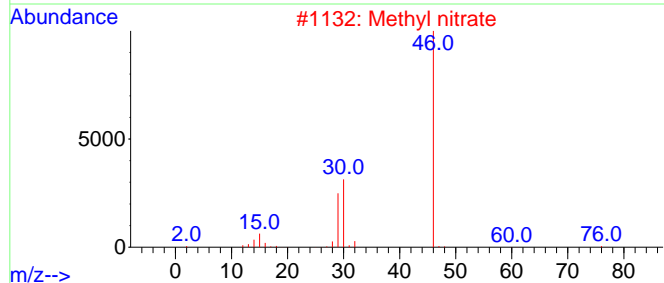
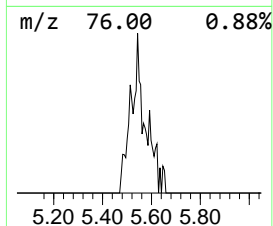
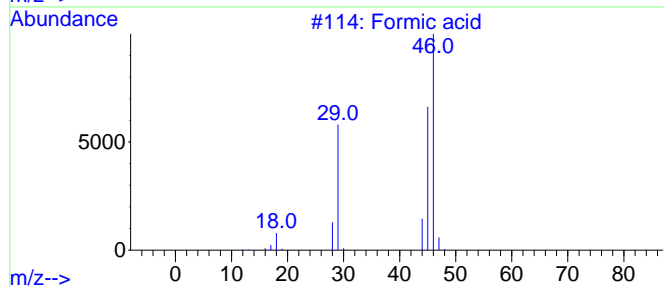
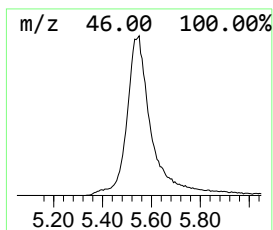
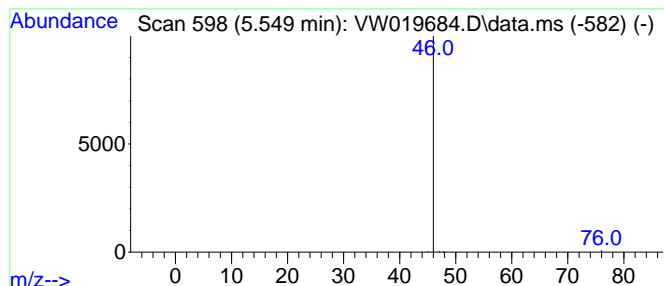
Quant Method : Z:\voasrv\HPCHEM1\MSVOA\_W\Method\SFAMWLM070921SMA.M  
 Quant Title : SFAM01.0

TIC Library : C:\Database\NIST20.L  
 TIC Integration Parameters: LSCINT.P

\*\*\*\*\*  
 Peak Number 1 unknown-01 Concentration Rank 2

R.T.	EstConc	Area	Relative to ISTD	R.T.
5.549	4.65 ug/L	223623	1,4-Difluorobenzene	8.841

Hit#	of 5	Tentative ID	MW	MolForm	CAS#	Qual
1		Formic acid	46	CH2O2	000064-18-6	4
2		Methyl nitrate	77	CH3NO3	000598-58-3	4
3		Hydrazine, methyl-	46	CH6N2	000060-34-4	3
4		Hydrazine, methyl-	46	CH6N2	000060-34-4	3
5		Formic acid	46	CH2O2	000064-18-6	3



Data Path : Z:\voasrv\HPCHEM1\MSVOA\_W\Data\VW080521\  
 Data File : VW019684.D  
 Acq On : 05 Aug 2021 15:38  
 Operator : SY/VA  
 Sample : M3264-05  
 Misc : 6.55g/10mL/MSVOA\_W/SOIL  
 ALS Vial : 16 Sample Multiplier: 1

Instrument :  
 MSVOA\_W  
 ClientSampleID :  
 GB644

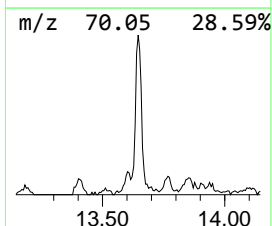
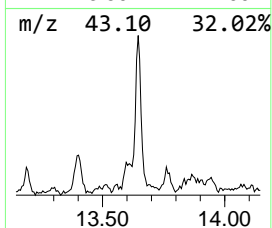
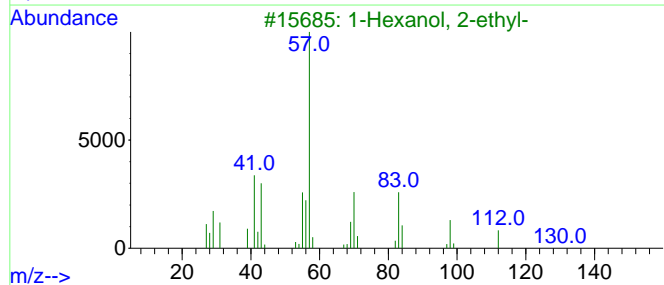
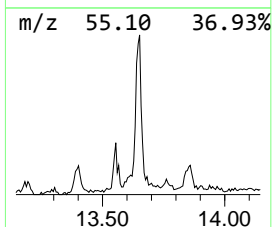
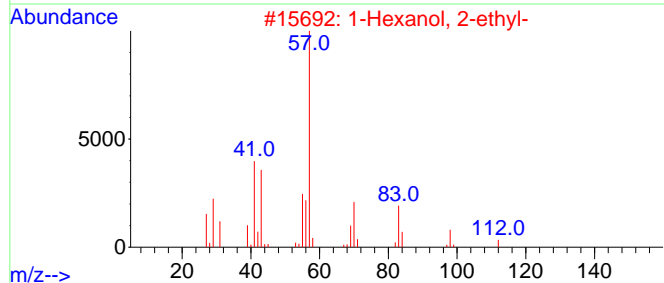
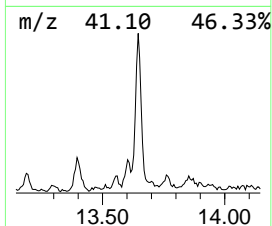
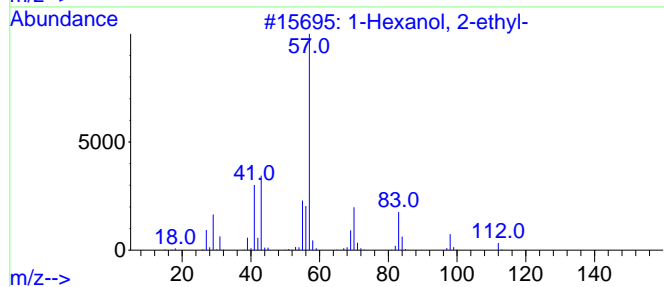
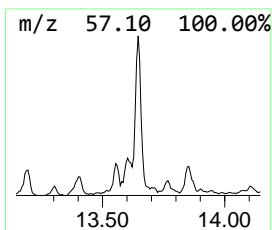
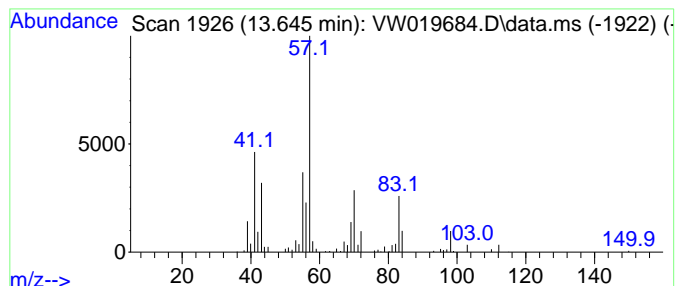
Quant Method : Z:\voasrv\HPCHEM1\MSVOA\_W\Method\SFAMWLM070921SMA.M  
 Quant Title : SFAM01.0

TIC Library : C:\Database\NIST20.L  
 TIC Integration Parameters: LSCINT.P

\*\*\*\*\*  
 Peak Number 5 1-Hexanol, 2-ethyl- Concentration Rank 4

R.T.	EstConc	Area	Relative to ISTD	R.T.
13.646	1.72 ug/L	103120	1,4-Dichlorobenzene-d4	13.560

Hit#	of	5	Tentative ID	MW	MolForm	CAS#	Qual
1			1-Hexanol, 2-ethyl-	130	C8H18O	000104-76-7	72
2			1-Hexanol, 2-ethyl-	130	C8H18O	000104-76-7	72
3			1-Hexanol, 2-ethyl-	130	C8H18O	000104-76-7	56
4			1-Hexanol, 2-ethyl-	130	C8H18O	000104-76-7	53
5			Octane, 2,3-dimethyl-	142	C10H22	007146-60-3	47



Data Path : Z:\voasrv\HPCHEM1\MSVOA\_W\Data\VW080521\  
Data File : VW019684.D  
Acq On : 05 Aug 2021 15:38  
Operator : SY/VA  
Sample : M3264-05  
Misc : 6.55g/10mL/MSVOA\_W/SOIL  
ALS Vial : 16 Sample Multiplier: 1

Instrument :  
MSVOA\_W  
ClientSampleId :  
GB644

Quant Method : Z:\voasrv\HPCHEM1\MSVOA\_W\Method\SFAMWLM070921SMA.M  
Quant Title : SFAM01.0

TIC Library : C:\Database\NIST20.L  
TIC Integration Parameters: LSCINT.P

TIC Top Hit name	RT	EstConc	Units	Response	--Internal Standard--			
					#	RT	Resp	Conc
unknown-01	5.549	4.7	ug/L	223623	1	8.841	1202830	25.0
1-Hexanol, 2-et...	13.646	1.7	ug/L	103120	3	13.560	1497030	25.0