

Data Path : Z:\VOASRV\HPCHEM1\MSVOA\_W\DATA\VW080718\  
 Data File : VW004490.D  
 Acq On : 07 Aug 2018 12:21  
 Operator : SY/AP  
 Sample : J4301-17  
 Misc : 5.33G/10ML/MSVOA\_W/SOIL  
 ALS Vial : 1 Sample Multiplier: 1

Instrument :  
 MSVOA\_W  
 ClientSampleId :  
 C0AF8RE

Quant Time: Aug 08 05:49:27 2018  
 Quant Method : Z:\VOASRV\HPCHEM1\MSVOA\_W\METHOD\SOM2WLM080218S.M  
 Quant Title : VOC Analysis  
 QLast Update : Wed Aug 08 05:39:03 2018  
 Response via : Initial Calibration

Internal Standards	R.T.	QIon	Response	Conc	Units	Dev(Min)
1) 1,4-Difluorobenzene	8.85	114	827465	25.00	ug/L	0.00
28) Chlorobenzene-d5	11.63	117	726359	25.00	ug/L	0.00
60) 1,4-Dichlorobenzene-d4	13.57	152	236312	25.00	ug/L	0.00

## System Monitoring Compounds

4) Vinyl Chloride-d3	2.35	65	208667	20.27	ug/L	0.00
Spiked Amount	25.000	Range	30 - 150	Recovery	=	81.08%
7) Chloroethane-d5	2.89	69	185218	21.39	ug/L	0.00
Spiked Amount	25.000	Range	30 - 150	Recovery	=	85.56%
10) 1,1-Dichloroethene-d2	4.01	63	321554	15.38	ug/L	0.00
Spiked Amount	25.000	Range	45 - 110	Recovery	=	61.52%
20) 2-Butanone-d5	7.09	46	161983	35.69	ug/L	0.00
Spiked Amount	50.000	Range	20 - 135	Recovery	=	71.38%
24) Chloroform-d	7.65	84	516650	23.06	ug/L	0.00
Spiked Amount	25.000	Range	40 - 150	Recovery	=	92.24%
26) 1,2-Dichloroethane-d4	8.31	65	304182	24.36	ug/L	0.00
Spiked Amount	25.000	Range	70 - 130	Recovery	=	97.44%
29) Benzene-d6	8.28	84	954198	24.69	ug/L	0.00
Spiked Amount	25.000	Range	20 - 135	Recovery	=	98.76%
33) 1,2-Dichloropropane-d6	9.28	67	325359	25.76	ug/L	0.00
Spiked Amount	25.000	Range	70 - 120	Recovery	=	103.04%
37) Toluene-d8	10.33	98	744935	21.87	ug/L	0.00
Spiked Amount	25.000	Range	30 - 130	Recovery	=	87.48%
38) trans-1,3-Dichloropropene-	10.58	79	106450	20.50	ug/L	0.00
Spiked Amount	25.000	Range	30 - 135	Recovery	=	82.00%
39) 2-Hexanone-d5	10.93	63	108774	35.38	ug/L	0.00
Spiked Amount	50.000	Range	20 - 135	Recovery	=	70.76%
48) 1,1,2,2-Tetrachloroethane-	12.70	84	314589	22.97	ug/L	0.00
Spiked Amount	25.000	Range	45 - 120	Recovery	=	91.88%
61) 1,2-Dichlorobenzene-d4	13.86	152	211198	23.80	ug/L	0.00
Spiked Amount	25.000	Range	75 - 120	Recovery	=	95.20%

## Target Compounds

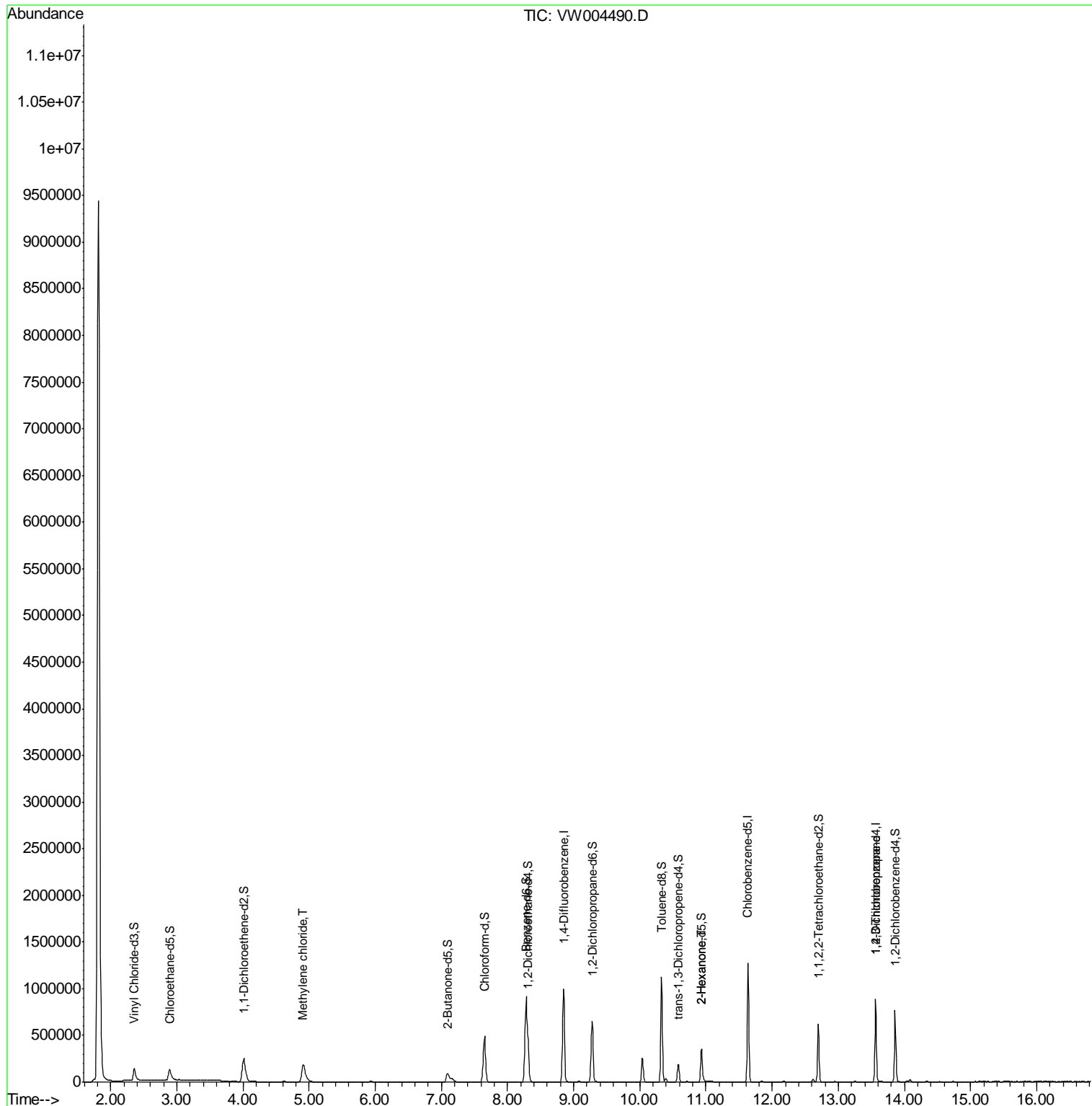
Target Compounds	R.T.	QIon	Response	Conc	Units	Qvalue
16) Methylene chloride	4.91	84	186317	11.336	ug/L	100
49) 2-Hexanone	10.93	43	15086	2.257	ug/L #	75
59) 1,2,3-Trichloropropane	13.56	75	28374	2.839	ug/L	89

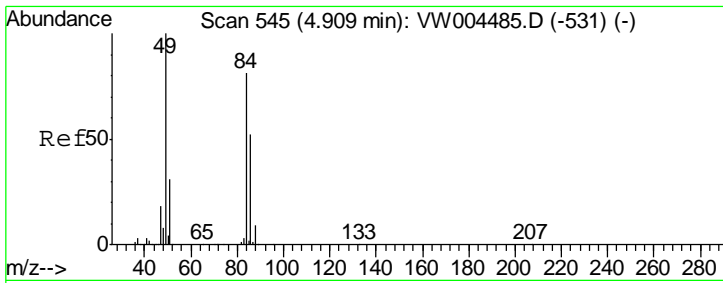
(#) = qualifier out of range (m) = manual integration (+) = signals summed

Data Path : Z:\VOASRV\HPCHEM1\MSVOA\_W\DATA\VW080718\  
 Data File : VW004490.D  
 Acq On : 07 Aug 2018 12:21  
 Operator : SY/AP  
 Sample : J4301-17  
 Misc : 5.33G/10ML/MSVOA\_W/SOIL  
 ALS Vial : 1 Sample Multiplier: 1

Instrument :  
 MSVOA\_W  
 ClientSampleID :  
 C0AF8RE

Quant Time: Aug 08 05:49:27 2018  
 Quant Method : Z:\VOASRV\HPCHEM1\MSVOA\_W\METHOD\SOM2WLM080218S.M  
 Quant Title : VOC Analysis  
 QLast Update : Wed Aug 08 05:39:03 2018  
 Response via : Initial Calibration

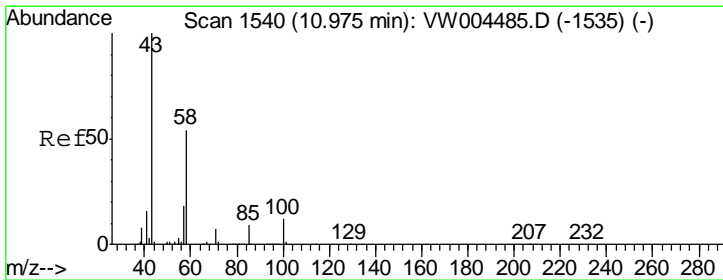
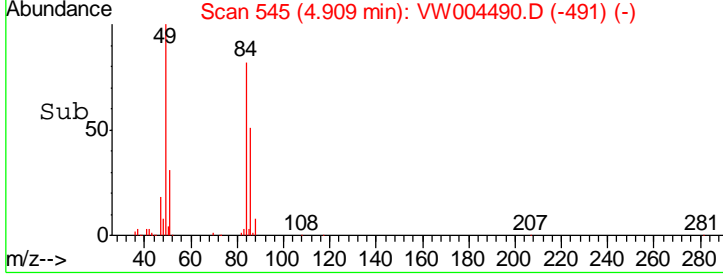
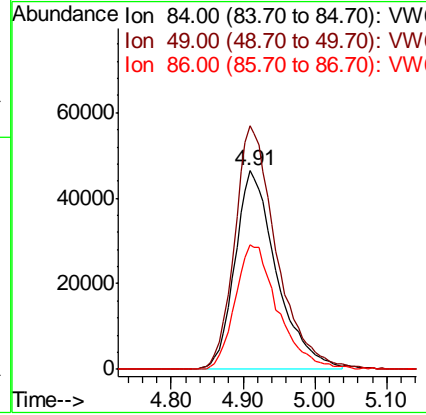
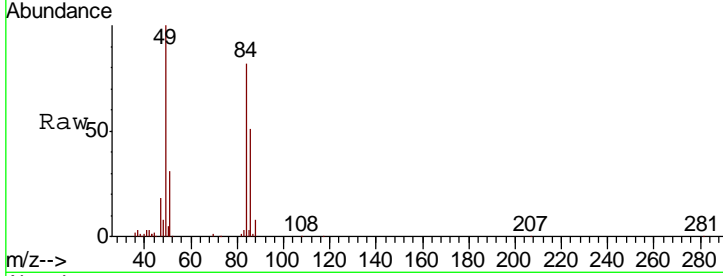




#16  
 Methylene chloride  
 Concen: 11.336 ug/L  
 RT: 4.91 min Scan# 545  
 Delta R.T. -0.00 min  
 Lab File: VW004490.D  
 Acq: 07 Aug 2018 12:21

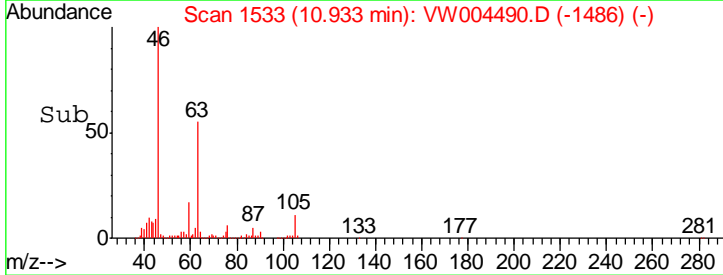
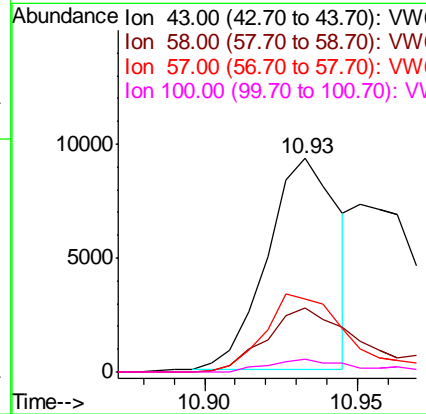
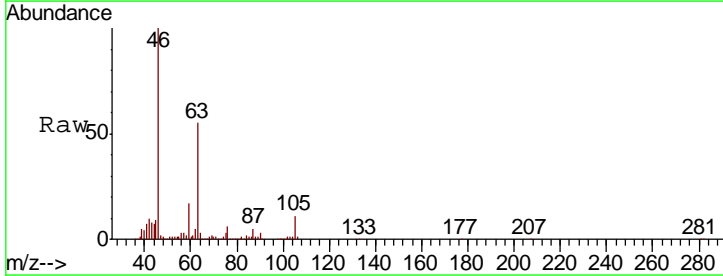
Instrument :  
 MSVOA\_W  
 ClientSampled :  
 COAF8RE

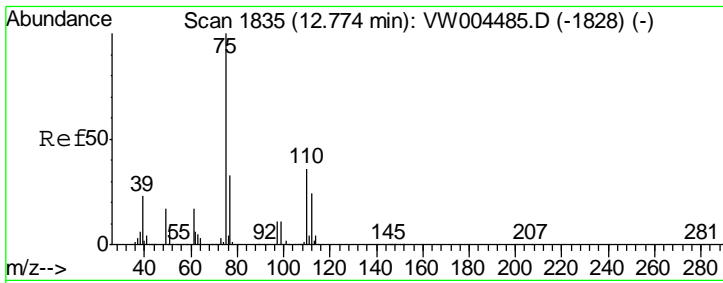
Tgt Ion	Resp	Lower	Upper
84	186317		
49	122.7	86.0	159.6
86	63.0	43.5	80.9



#49  
 2-Hexanone  
 Concen: 2.257 ug/L  
 RT: 10.93 min Scan# 1533  
 Delta R.T. -0.04 min  
 Lab File: VW004490.D  
 Acq: 07 Aug 2018 12:21

Tgt Ion	Resp	Lower	Upper
43	15086		
58	41.8	43.4	65.0#
57	43.4	15.0	22.6#
100	5.9	8.9	13.3#





#59  
 1,2,3-Trichloropropane  
 Concen: 2.839 ug/L  
 RT: 13.56 min Scan# 1964  
 Delta R.T. 0.79 min  
 Lab File: VW004490.D  
 Acq: 07 Aug 2018 12:21

Instrument :  
 MSVOA\_W  
 ClientSampleId :  
 COAF8RE

Tgt Ion: 75 Resp: 28374  
 Ion Ratio Lower Upper  
 75 100  
 77 37.6 25.3 37.9

