

Data Path : Z:\VOASRV\HPCHEM1\MSVOA W\DATA\VW080718\  
 Data File : VW004489.D  
 Acq On : 07 Aug 2018 11:55  
 Operator : SY/AP  
 Sample : J4301-18RE  
 Misc : 5.61G/10ML/MSVOA W/SOIL  
 ALS Vial : 1 Sample Multiplier: 1

Instrument :  
 MSVOA\_W  
 ClientSampleId :  
 C0AF9RE

Integration Parameters: LSCINT.P

Integrator: RTE  
 Smoothing : OFF  
 Sampling : 1  
 Start Thrs: 0.2  
 Stop Thrs : 0

Filtering: 5  
 Min Area: 0 % of largest Peak  
 Max Peaks: 100  
 Peak Location: TOP

If leading or trailing edge < 100 prefer < Baseline drop else tangent >  
 Peak separation: 5

Method : Z:\VOASRV\HPCHEM1\MSVOA\_W\METHOD\SOM2WLM080218S.M  
 Title : VOC Analysis

Signal : TIC

peak #	R.T. min	first scan	max scan	last scan	PK TY	peak height	corr. area	corr. % max.	% of total
1	1.746	17	26	28	rBV	27142	55662	0.31%	0.161%
2	1.813	28	37	67	rVB	7915385	18180155	100.00%	52.551%
3	2.185	96	98	99	rBV	4244	3052	0.02%	0.009%
4	2.355	120	126	140	rBV	124664	288679	1.59%	0.834%
5	2.892	208	214	230	rVB2	102274	286512	1.58%	0.828%
6	4.013	386	398	414	rBV	222505	765222	4.21%	2.212%
7	4.343	450	452	453	rBV2	928	725	0.00%	0.002%
8	4.367	453	456	457	rVV2	1459	1465	0.01%	0.004%
9	4.684	507	508	512	rVB2	1493	850	0.00%	0.002%
10	4.769	520	522	526	rBV4	783	761	0.00%	0.002%
11	4.910	532	545	577	rBV	228310	907522	4.99%	2.623%
12	5.178	587	589	592	rVB4	880	980	0.01%	0.003%
13	5.227	592	597	599	rBV5	1321	2135	0.01%	0.006%
14	5.257	601	602	606	rVV4	1309	1472	0.01%	0.004%
15	5.306	608	610	613	rBV3	943	1213	0.01%	0.004%
16	5.403	622	626	627	rBV3	783	1017	0.01%	0.003%
17	5.416	627	628	630	rVV2	1022	751	0.00%	0.002%
18	5.440	630	632	637	rVB4	697	1034	0.01%	0.003%
19	5.568	650	653	657	rVB4	494	691	0.00%	0.002%
20	5.708	672	676	678	rBV3	605	849	0.00%	0.002%
21	5.739	678	681	682	rBV2	689	668	0.00%	0.002%
22	5.788	688	689	693	rBV4	599	646	0.00%	0.002%
23	5.928	701	712	726	rBV5	9978	33139	0.18%	0.096%
24	6.233	760	762	764	rVB	777	714	0.00%	0.002%
25	6.318	773	776	778	rVB3	663	733	0.00%	0.002%
26	6.367	781	784	788	rBV3	511	877	0.00%	0.003%
27	6.440	791	796	799	rBV5	484	903	0.00%	0.003%
28	6.556	814	815	817	rBV	874	929	0.01%	0.003%
29	6.629	824	827	830	rVB3	843	764	0.00%	0.002%
30	6.690	835	837	842	rVB3	925	1148	0.01%	0.003%
31	6.739	842	845	848	rBV2	899	1277	0.01%	0.004%
32	6.775	849	851	856	rVB4	715	784	0.00%	0.002%
33	6.928	874	876	879	rBV3	826	900	0.00%	0.003%
34	7.092	894	903	910	rBV	69193	215860	1.19%	0.624%

Data Path : Z:\VOASRV\HPCHEM1\MSVOA W\DATA\VW080718\  
 Data File : VW004489.D  
 Acq On : 07 Aug 2018 11:55  
 Operator : SY/AP  
 Sample : J4301-18RE  
 Misc : 5.61G/10ML/MSVOA W/SOIL  
 ALS Vial : 1 Sample Multiplier: 1

Instrument :  
 MSVOA\_W  
 ClientSampleId :  
 COAF9RE

## Integration Parameters: LSCINT.P

Integrator: RTE  
 Smoothing : OFF  
 Sampling : 1  
 Start Thrs: 0.2  
 Stop Thrs : 0

Filtering: 5  
 Min Area: 0 % of largest Peak  
 Max Peaks: 100  
 Peak Location: TOP

If leading or trailing edge < 100 prefer < Baseline drop else tangent >  
 Peak separation: 5

Method : Z:\VOASRV\HPCHEM1\MSVOA\_W\METHOD\SOM2WLM080218S.M  
 Title : VOC Analysis

35	7.537	970	976	978	rBV6	2359	4322	0.02%	0.012%
36	7.647	984	994	1006	rVV	421379	1016820	5.59%	2.939%
37	7.726	1006	1007	1013	rVB4	1444	2483	0.01%	0.007%
38	7.824	1021	1023	1025	rBV2	1093	877	0.00%	0.003%
39	8.153	1075	1077	1080	rBV4	861	1025	0.01%	0.003%
40	8.275	1086	1097	1112	rBV2	769004	2317741	12.75%	6.700%
41	8.482	1129	1131	1132	rBV2	1010	852	0.00%	0.002%
42	8.598	1147	1150	1151	rVB2	924	789	0.00%	0.002%
43	8.629	1151	1155	1159	rBV6	1451	2865	0.02%	0.008%
44	8.696	1161	1166	1172	rVB8	1540	3104	0.02%	0.009%
45	8.750	1172	1175	1177	rVB3	862	1177	0.01%	0.003%
46	8.842	1180	1190	1203	rBV	822332	1654113	9.10%	4.781%
47	9.080	1223	1229	1235	rVB9	3121	6808	0.04%	0.020%
48	9.275	1252	1261	1272	rBV	542107	1108773	6.10%	3.205%
49	9.470	1289	1293	1295	rVB5	1027	1376	0.01%	0.004%
50	9.506	1295	1299	1301	rBV4	1358	1718	0.01%	0.005%
51	9.628	1318	1319	1321	rBV2	1025	1056	0.01%	0.003%
52	9.659	1321	1324	1329	rVB4	2830	5064	0.03%	0.015%
53	9.769	1341	1342	1345	rVB3	835	704	0.00%	0.002%
54	9.903	1361	1364	1366	rVB4	876	766	0.00%	0.002%
55	9.964	1371	1374	1377	rVB4	642	884	0.00%	0.003%
56	10.037	1377	1386	1398	rBV	219900	398644	2.19%	1.152%
57	10.262	1419	1423	1424	rBV4	849	1217	0.01%	0.004%
58	10.329	1425	1434	1441	rVV	876992	1571210	8.64%	4.542%
59	10.390	1441	1444	1452	rVB	20862	36008	0.20%	0.104%
60	10.579	1467	1475	1484	rBV	155639	271234	1.49%	0.784%
61	10.707	1491	1496	1503	rVB	6664	13057	0.07%	0.038%
62	10.762	1503	1505	1506	rBV2	1140	720	0.00%	0.002%
63	10.860	1516	1521	1523	rBV5	1460	1942	0.01%	0.006%
64	10.933	1525	1533	1552	rBV	270203	519274	2.86%	1.501%
65	11.415	1611	1612	1613	rBV	949	631	0.00%	0.002%
66	11.518	1627	1629	1631	rVB3	836	786	0.00%	0.002%
67	11.634	1640	1648	1658	rBV	1054420	1770796	9.74%	5.119%
68	11.732	1663	1664	1667	rVB3	2261	1952	0.01%	0.006%
69	11.835	1675	1681	1688	rBV2	7758	15081	0.08%	0.044%
70	11.945	1698	1699	1703	rVB4	1137	1258	0.01%	0.004%
71	12.171	1731	1736	1744	rVB3	9869	16596	0.09%	0.048%

Data Path : Z:\VOASRV\HPCHEM1\MSVOA W\DATA\VW080718\  
 Data File : VW004489.D  
 Acq On : 07 Aug 2018 11:55  
 Operator : SY/AP  
 Sample : J4301-18RE  
 Misc : 5.61G/10ML/MSVOA W/SOIL  
 ALS Vial : 1 Sample Multiplier: 1

Instrument :  
 MSVOA\_W  
 ClientSampleId :  
 C0AF9RE

## Integration Parameters: LSCINT.P

Integrator: RTE  
 Smoothing : OFF  
 Sampling : 1  
 Start Thrs: 0.2  
 Stop Thrs : 0

Filtering: 5  
 Min Area: 0 % of largest Peak  
 Max Peaks: 100  
 Peak Location: TOP

If leading or trailing edge < 100 prefer < Baseline drop else tangent >  
 Peak separation: 5

Method : Z:\VOASRV\HPCHEM1\MSVOA\_W\METHOD\SOM2WLM080218S.M  
 Title : VOC Analysis

72	12.347	1762	1765	1769	rVV5	1864	2210	0.01%	0.006%
73	12.469	1782	1785	1788	rBV4	1154	1466	0.01%	0.004%
74	12.616	1796	1809	1815	rBV	38563	68502	0.38%	0.198%
75	12.701	1815	1823	1831	rVV	459326	761676	4.19%	2.202%
76	12.872	1846	1851	1853	rBV4	1212	2241	0.01%	0.006%
77	12.908	1855	1857	1859	rVV3	1301	1641	0.01%	0.005%
78	12.939	1859	1862	1868	rVB6	3318	6233	0.03%	0.018%
79	13.164	1895	1899	1904	rBV6	1925	3422	0.02%	0.010%
80	13.250	1911	1913	1919	rVB6	2703	4580	0.03%	0.013%
81	13.347	1927	1929	1932	rVB4	835	1037	0.01%	0.003%
82	13.408	1932	1939	1945	rBV8	2192	5365	0.03%	0.016%
83	13.487	1946	1952	1954	rBV6	2674	4963	0.03%	0.014%
84	13.567	1957	1965	1972	rBV	708848	1138662	6.26%	3.291%
85	13.658	1977	1980	1987	rVB5	6511	9748	0.05%	0.028%
86	13.859	2006	2013	2020	rBV	589308	967774	5.32%	2.797%
87	14.036	2040	2042	2044	rBV3	1804	2000	0.01%	0.006%
88	14.085	2044	2050	2056	rVB3	26646	47113	0.26%	0.136%
89	14.128	2056	2057	2059	rBV2	1416	678	0.00%	0.002%
90	14.237	2065	2075	2077	rBV9	2501	7815	0.04%	0.023%
91	14.335	2085	2091	2097	rBV10	5843	13795	0.08%	0.040%
92	14.505	2117	2119	2120	rBV2	1055	675	0.00%	0.002%
93	14.609	2134	2136	2139	rBV3	1148	1111	0.01%	0.003%
94	15.085	2212	2214	2218	rBV4	1423	1654	0.01%	0.005%
95	15.322	2250	2253	2254	rBV3	1952	2241	0.01%	0.006%
96	15.414	2266	2268	2274	rVB5	1962	2645	0.01%	0.008%
97	15.511	2280	2284	2290	rVB	10528	17662	0.10%	0.051%
98	15.664	2308	2309	2312	rBV2	1216	1563	0.01%	0.005%
99	15.981	2359	2361	2363	rBV3	1453	1235	0.01%	0.004%
100	16.066	2373	2375	2379	rVB4	1447	1609	0.01%	0.005%

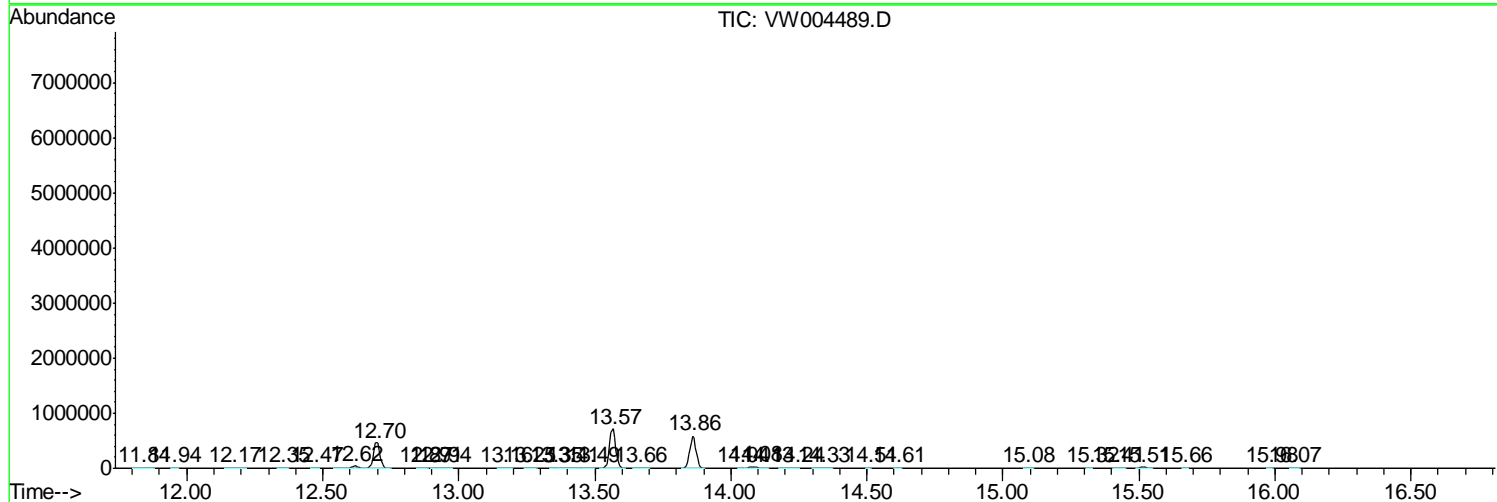
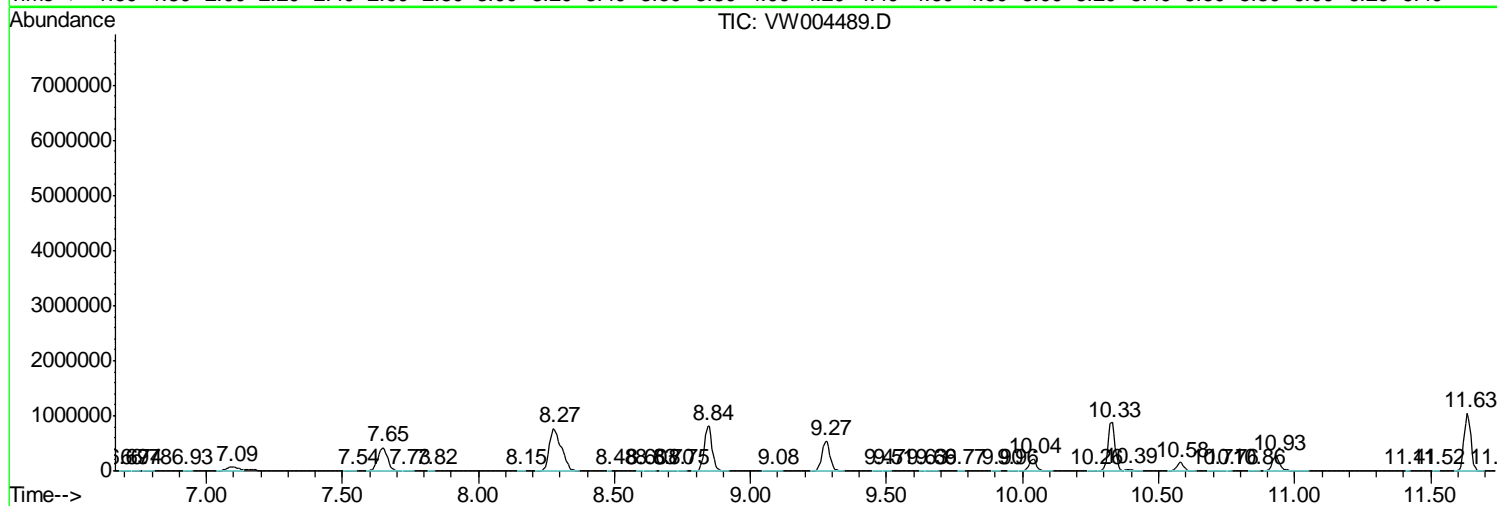
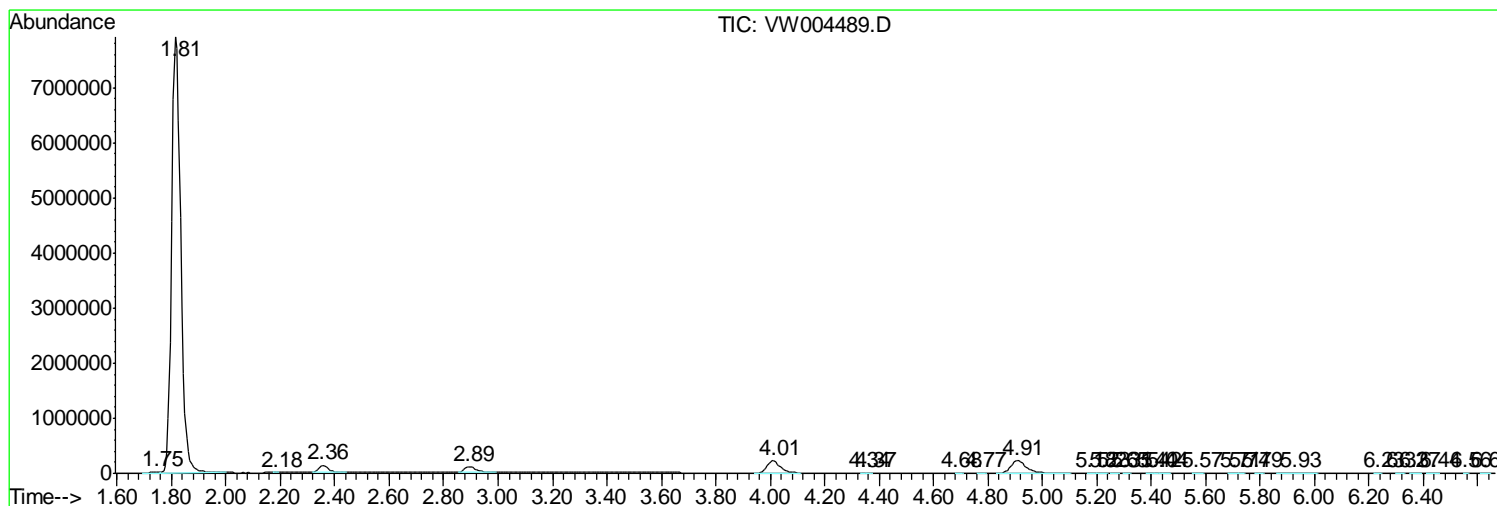
Sum of corrected areas: 34595128

Data Path : Z:\VOASRV\HPCHEM1\MSVOA W\DATA\VW080718\  
 Data File : VW004489.D  
 Acq On : 07 Aug 2018 11:55  
 Operator : SY/AP  
 Sample : J4301-18RE  
 Misc : 5.61G/10ML/MSVOA W/SOIL  
 ALS Vial : 1 Sample Multiplier: 1

Instrument :  
 MSVOA\_W  
 ClientSampleId :  
 C0AF9RE

Quant Method : Z:\VOASRV\HPCHEM1\MSVOA\_W\METHOD\SOM2WLM080218S.M  
 Quant Title : VOC Analysis

TIC Library : C:\DATABASE\NIST11.L  
 TIC Integration Parameters: LSCINT.P



Data Path : Z:\VOASRV\HPCHEM1\MSVOA\_W\DATA\VW080718\  
Data File : VW004489.D  
Acq On : 07 Aug 2018 11:55  
Operator : SY/AP  
Sample : J4301-18RE  
Misc : 5.61G/10ML/MSVOA\_W/SOIL  
ALS Vial : 1 Sample Multiplier: 1

Instrument :  
MSVOA\_W  
ClientSampleId :  
C0AF9RE

Quant Method : Z:\VOASRV\HPCHEM1\MSVOA\_W\METHOD\SOM2WLM080218S.M  
Quant Title : VOC Analysis

TIC Library : C:\DATABASE\NIST11.L  
TIC Integration Parameters: LSCINT.P

No Library Search Compounds Detected

\*\*\*\*\*

Data Path : Z:\VOASRV\HPCHEM1\MSVOA\_W\DATA\VW080718\  
Data File : VW004489.D  
Acq On : 07 Aug 2018 11:55  
Operator : SY/AP  
Sample : J4301-18RE  
Misc : 5.61G/10ML/MSVOA\_W/SOIL  
ALS Vial : 1 Sample Multiplier: 1

Instrument :  
MSVOA\_W  
ClientSampleId :  
C0AF9RE

Quant Method : Z:\VOASRV\HPCHEM1\MSVOA\_W\METHOD\SOM2WLM080218S.M  
Quant Title : VOC Analysis

TIC Library : C:\DATABASE\NIST11.L  
TIC Integration Parameters: LSCINT.P

TIC Top Hit name	RT	EstConc	Units	Response	--Internal Standard--			
					#	RT	Resp	Conc

---