

Data Path : Z:\VOASRV\HPCHEM1\MSVOA W\DATA\VW080720\
 Data File : VW016073.D
 Acq On : 07 Aug 2020 13:22
 Operator : SY/VA
 Sample : L3579-10
 Misc : 6.40G/10ML/MSVOA W/SOIL
 ALS Vial : 1 Sample Multiplier: 1

Instrument :
 MSVOA_W
 ClientSampleId :
 BFSL4

Quant Time: Aug 08 04:52:18 2020
 Quant Method : Z:\VOASRV\HPCHEM1\MSVOA_W\METHOD\SOM2WLM072020S.M
 Quant Title : VOC Analysis
 QLast Update : Sat Aug 08 03:18:33 2020
 Response via : Initial Calibration

Internal Standards	R.T.	QIon	Response	Conc	Units	Dev(Min)
1) 1,4-Difluorobenzene	8.85	114	267462	25.00	ug/L	0.00
28) Chlorobenzene-d5	11.63	117	131823	25.00	ug/L	0.00
60) 1,4-Dichlorobenzene-d4	13.56	152	21051	25.00	ug/L	0.00

System Monitoring Compounds

4) Vinyl Chloride-d3	2.36	65	65943	17.47	ug/L	0.00
Spiked Amount	25.000	Range	30 - 150	Recovery	=	69.88%
7) Chloroethane-d5	2.89	69	57031	18.61	ug/L	0.00
Spiked Amount	25.000	Range	30 - 150	Recovery	=	74.44%
10) 1,1-Dichloroethene-d2	4.01	63	107006	14.02	ug/L	0.00
Spiked Amount	25.000	Range	45 - 110	Recovery	=	56.08%
20) 2-Butanone-d5	7.09	46	38975	39.31	ug/L	0.00
Spiked Amount	50.000	Range	20 - 135	Recovery	=	78.62%
24) Chloroform-d	7.65	84	162320	21.61	ug/L	0.00
Spiked Amount	25.000	Range	40 - 150	Recovery	=	86.44%
26) 1,2-Dichloroethane-d4	8.31	65	84486	20.49	ug/L	0.00
Spiked Amount	25.000	Range	70 - 130	Recovery	=	81.96%
29) Benzene-d6	8.27	84	281632	35.10	ug/L	0.00
Spiked Amount	25.000	Range	20 - 135	Recovery	=	140.40%#
33) 1,2-Dichloropropane-d6	9.27	67	85586	35.58	ug/L	0.00
Spiked Amount	25.000	Range	70 - 120	Recovery	=	142.32%#
37) Toluene-d8	10.32	98	172215	23.69	ug/L	0.00
Spiked Amount	25.000	Range	30 - 130	Recovery	=	94.76%
38) trans-1,3-Dichloropropene-	10.58	79	31358	30.58	ug/L	0.00
Spiked Amount	25.000	Range	30 - 135	Recovery	=	122.32%
39) 2-Hexanone-d5	10.93	63	31041	77.50	ug/L	0.00
Spiked Amount	50.000	Range	20 - 135	Recovery	=	155.00%#
48) 1,1,2,2-Tetrachloroethane-	12.69	84	55163	29.83	ug/L	0.00
Spiked Amount	25.000	Range	45 - 120	Recovery	=	119.32%
61) 1,2-Dichlorobenzene-d4	13.85	152	16402	19.98	ug/L	0.00
Spiked Amount	25.000	Range	75 - 120	Recovery	=	79.92%

Target Compounds

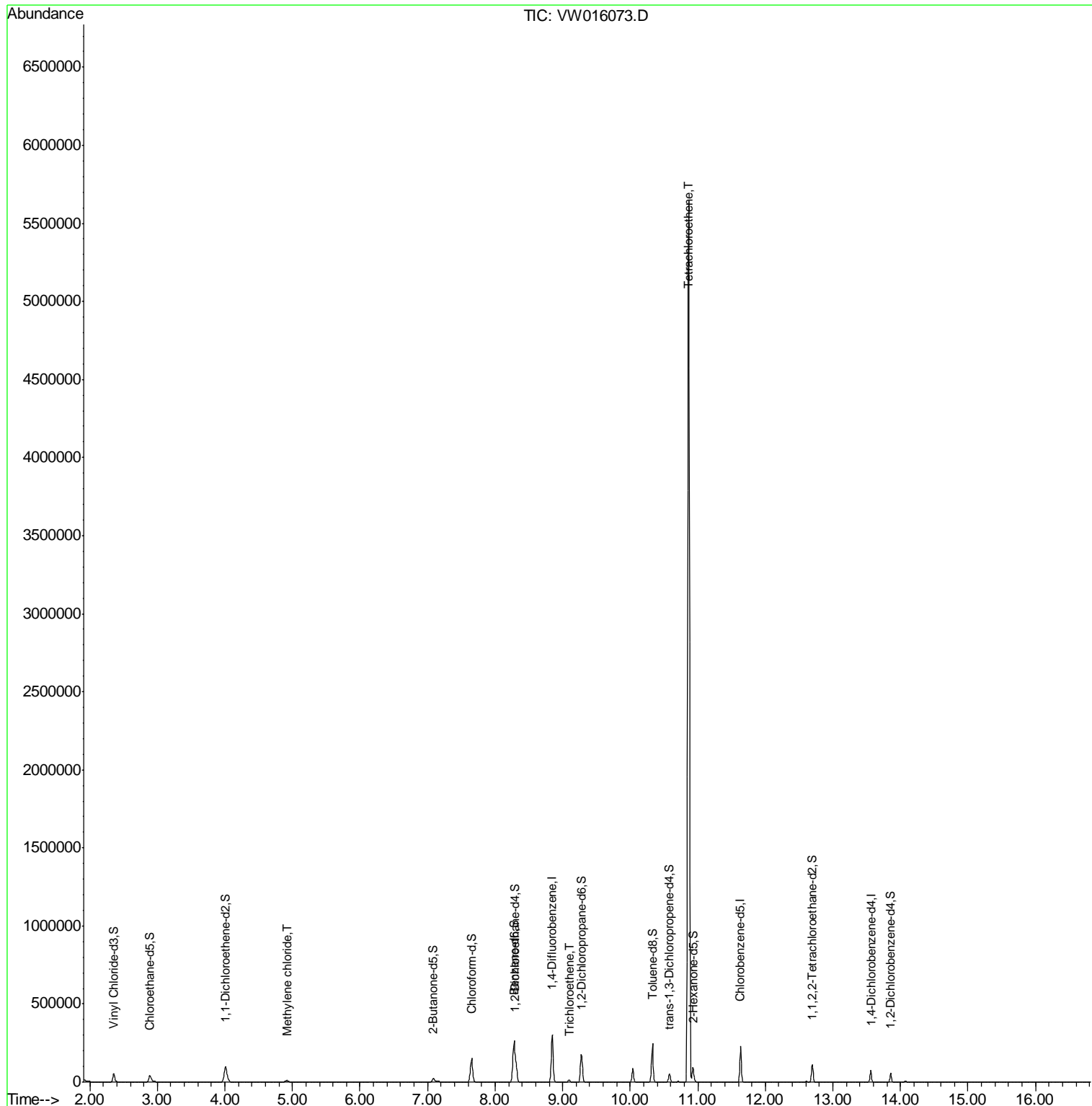
Target Compounds	R.T.	QIon	Response	Conc	Units	Ovalue
16) Methylene chloride	4.92	84	7990	1.823	ug/L	88
35) Trichloroethene	9.10	95	4285	2.023	ug/L	91
47) Tetrachloroethene	10.87	164	1376652	837.396	ug/L	94

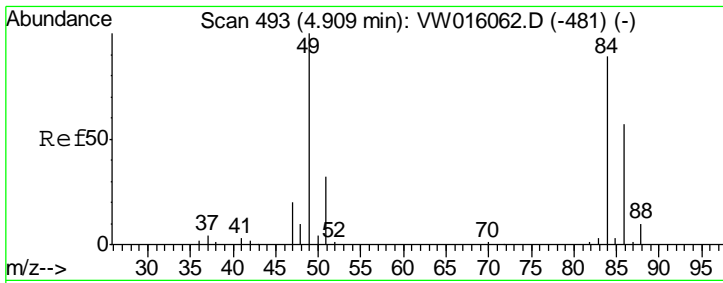
(#) = qualifier out of range (m) = manual integration (+) = signals summed

Data Path : Z:\VOASRV\HPCHEM1\MSVOA W\DATA\VW080720\
 Data File : VW016073.D
 Acq On : 07 Aug 2020 13:22
 Operator : SY/VA
 Sample : L3579-10
 Misc : 6.40G/10ML/MSVOA W/SOIL
 ALS Vial : 1 Sample Multiplier: 1

Instrument :
 MSVOA_W
 ClientSampled :
 BFSL4

Quant Time: Aug 08 04:52:18 2020
 Quant Method : Z:\VOASRV\HPCHEM1\MSVOA_W\METHOD\SOM2WLM072020S.M
 Quant Title : VOC Analysis
 QLast Update : Sat Aug 08 03:18:33 2020
 Response via : Initial Calibration

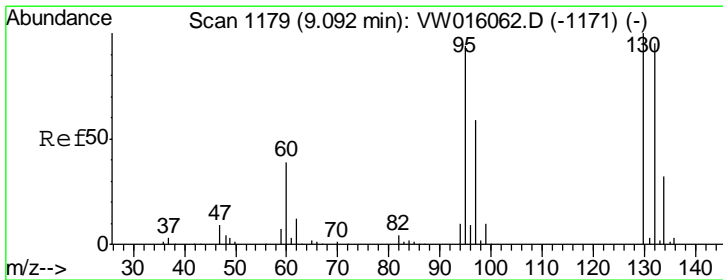
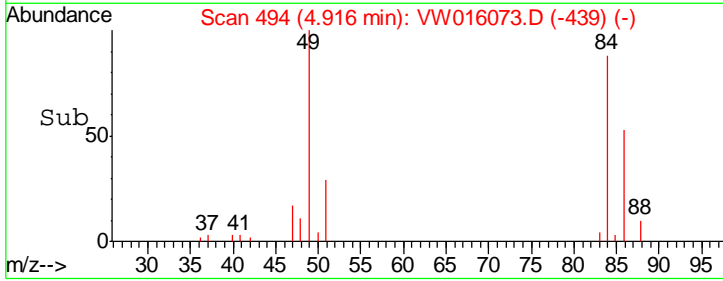
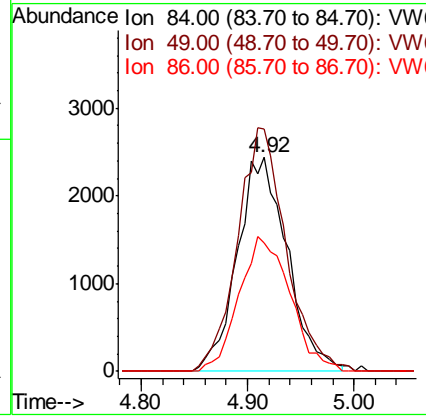
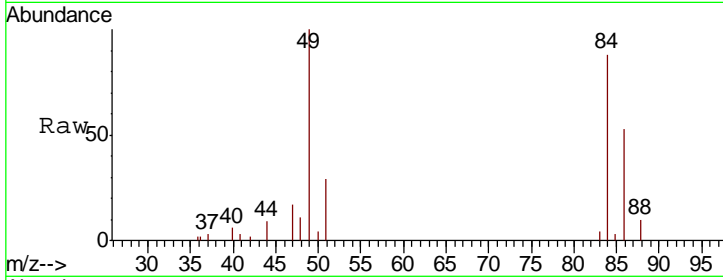




#16
 Methylene chloride
 Concen: 1.823 ug/L
 RT: 4.92 min Scan# 494
 Delta R.T. 0.01 min
 Lab File: VW016073.D
 Acq: 07 Aug 2020 13:22

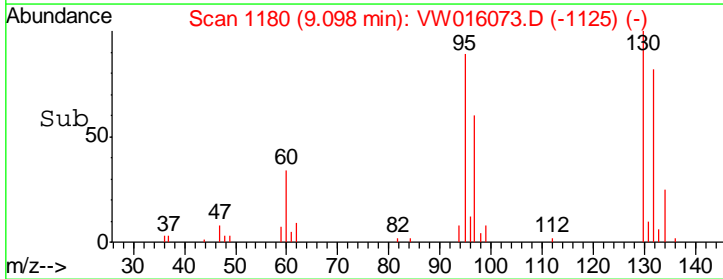
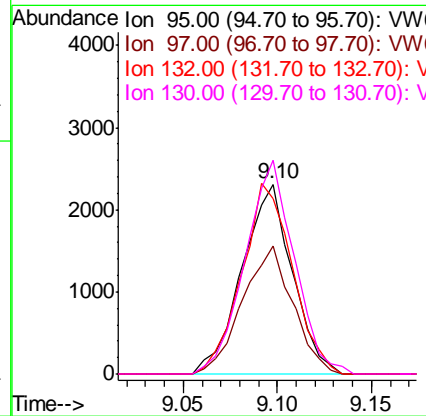
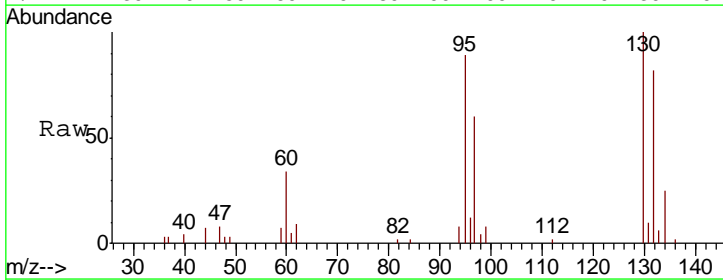
Instrument :
 MSVOA_W
ClientSampled :
 BFSL4

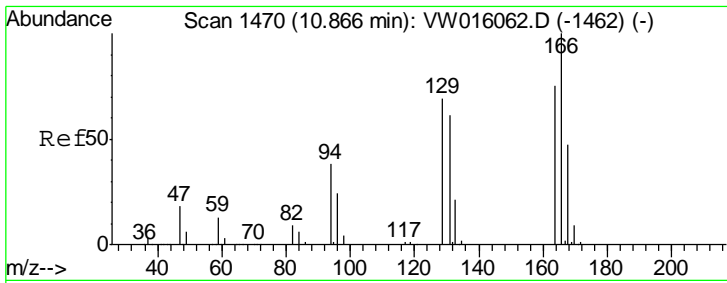
Tgt Ion	Resp	Lower	Upper
84	7990		
84	100		
49	113.2	91.1	169.1
86	60.3	46.0	85.4



#35
 Trichloroethene
 Concen: 2.023 ug/L
 RT: 9.10 min Scan# 1180
 Delta R.T. 0.01 min
 Lab File: VW016073.D
 Acq: 07 Aug 2020 13:22

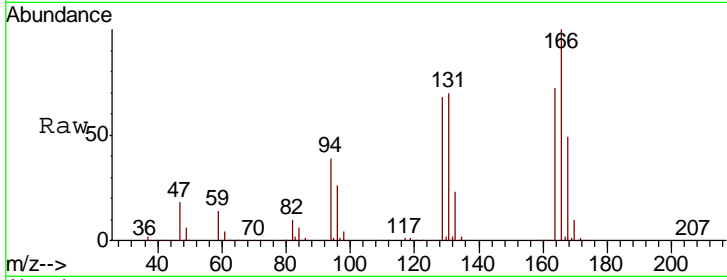
Tgt Ion	Resp	Lower	Upper
95	4285		
95	100		
97	67.4	44.4	82.4
132	100.8	65.1	120.9
130	110.0	68.6	127.4





#47
 Tetrachloroethene
 Concen: 837.396 ug/L
 RT: 10.87 min Scan# 1470
 Delta R.T. 0.00 min
 Lab File: VW016073.D
 Acq: 07 Aug 2020 13:22

Instrument : MSVOA_W
 ClientSampled : BFSL4



Tot Ion:164 Resp: 1376652

Ion	Ratio	Lower	Upper
164	100		
129	93.5	70.0	130.0
131	96.9	67.3	124.9
166	138.2	88.5	164.3

