

Data File : VW011777.D
 Acq On : 08 Aug 2019 16:38
 Operator : SY/VA
 Sample : K4215-03MSD
 Misc : 5.45G/10ML/MSVOA_W/SOIL
 ALS Vial : 15 Sample Multiplier: 1

Instrument :
 MSVOA_W
 ClientSampleId :
 ETOB4MSD

Quant Time: Aug 09 02:31:44 2019
 Quant Method : Z:\VOASRV\HPCHEM1\MSVOA_W\METHOD\SOM2WLM073019S.M
 Quant Title : VOC Analysis
 QLast Update : Fri Aug 09 02:27:11 2019
 Response via : Initial Calibration

Internal Standards	R.T.	QIon	Response	Conc	Units	Dev(Min)
1) 1,4-Difluorobenzene	8.84	114	212293	25.00	ug/L	0.00
28) Chlorobenzene-d5	11.63	117	84307	25.00	ug/L	0.00
60) 1,4-Dichlorobenzene-d4	13.56	152	12418	25.00	ug/L	0.00

System Monitoring Compounds

4) Vinyl Chloride-d3	2.35	65	91732	30.69	ug/L	0.00
Spiked Amount	25.000	Range	30 - 150	Recovery	=	122.76%
7) Chloroethane-d5	2.88	69	73796	34.27	ug/L	0.00
Spiked Amount	25.000	Range	30 - 150	Recovery	=	137.08%
10) 1,1-Dichloroethene-d2	4.02	63	222243	32.43	ug/L	0.00
Spiked Amount	25.000	Range	45 - 110	Recovery	=	129.72%#
20) 2-Butanone-d5	7.08	46	113751	84.51	ug/L	0.00
Spiked Amount	50.000	Range	20 - 135	Recovery	=	169.02%#
24) Chloroform-d	7.65	84	166205	28.51	ug/L	0.00
Spiked Amount	25.000	Range	40 - 150	Recovery	=	114.04%
26) 1,2-Dichloroethane-d4	8.30	65	99221	28.76	ug/L	0.00
Spiked Amount	25.000	Range	70 - 130	Recovery	=	115.04%
29) Benzene-d6	8.27	84	319719	60.31	ug/L	0.00
Spiked Amount	25.000	Range	20 - 135	Recovery	=	241.24%#
33) 1,2-Dichloropropane-d6	9.27	67	102072	59.64	ug/L	0.00
Spiked Amount	25.000	Range	70 - 120	Recovery	=	238.56%#
37) Toluene-d8	10.32	98	186969	39.74	ug/L	0.00
Spiked Amount	25.000	Range	30 - 130	Recovery	=	158.96%#
38) trans-1,3-Dichloropropene-	10.58	79	21610	28.81	ug/L	0.00
Spiked Amount	25.000	Range	30 - 135	Recovery	=	115.24%
39) 2-Hexanone-d5	10.93	63	47534	118.91	ug/L	0.00
Spiked Amount	50.000	Range	20 - 135	Recovery	=	237.82%#
48) 1,1,2,2-Tetrachloroethane-	12.69	84	62713	44.12	ug/L	0.00
Spiked Amount	25.000	Range	45 - 120	Recovery	=	176.48%#
61) 1,2-Dichlorobenzene-d4	13.85	152	14169	29.61	ug/L	0.00
Spiked Amount	25.000	Range	75 - 120	Recovery	=	118.44%

Target Compounds

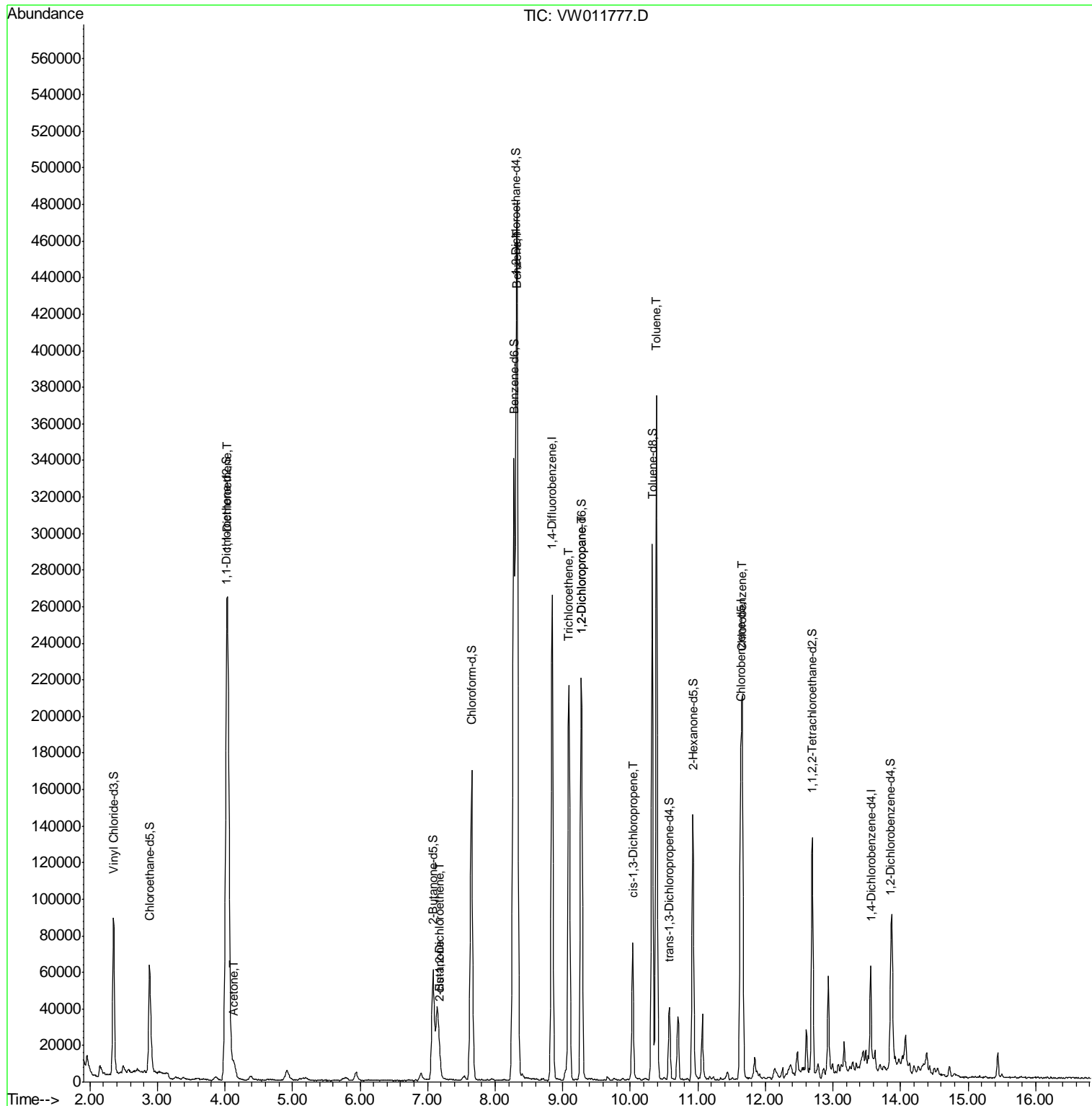
Target Compounds	R.T.	QIon	Response	Conc	Units	Qvalue
12) 1,1-Dichloroethene	4.04	96	107802	35.356	ug/L	96
13) Acetone	4.13	43	13844	9.603	ug/L	99
21) 2-Butanone	7.18	43	2452	1.357	ug/L	92
22) cis-1,2-Dichloroethene	7.18	96	5743	1.743	ug/L	86
34) Benzene	8.32	78	399977	67.701	ug/L	100
35) Trichloroethene	9.09	95	77195	51.469	ug/L	99
40) 1,2-Dichloropropane	9.27	63	11613	7.364	ug/L #	88
42) cis-1,3-Dichloropropene	10.03	75	1873	0.794	ug/L	93
44) Toluene	10.39	91	265294	44.198	ug/L	99
52) Chlorobenzene	11.66	112	97839	27.017	ug/L	98

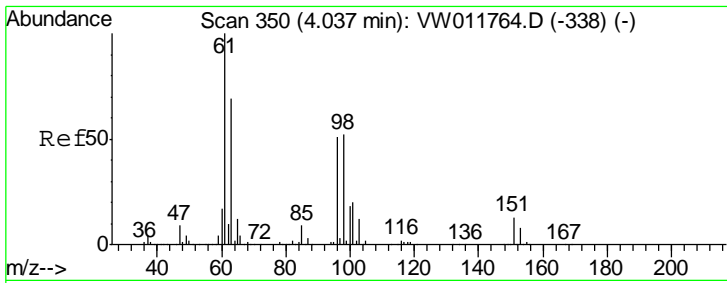
(#) = qualifier out of range (m) = manual integration (+) = signals summed

Data File : VW011777.D
Acq On : 08 Aug 2019 16:38
Operator : SY/VA
Sample : K4215-03MSD
Misc : 5.45G/10ML/MSVOA_W/SOIL
ALS Vial : 15 Sample Multiplier: 1

Instrument :
MSVOA_W
ClientSampled :
ETOB4MSD

Quant Time: Aug 09 02:31:44 2019
Quant Method : Z:\VOASRV\HPCHEM1\MSVOA_W\METHOD\SOM2WLM073019S.M
Quant Title : VOC Analysis
QLast Update : Fri Aug 09 02:27:11 2019
Response via : Initial Calibration

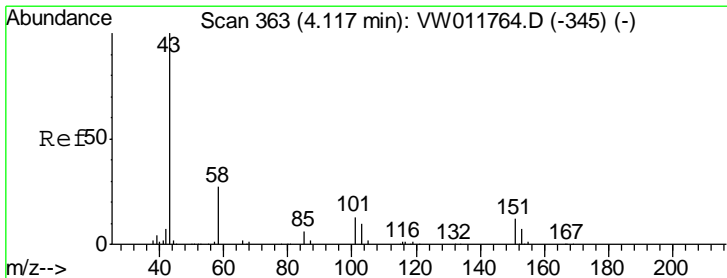
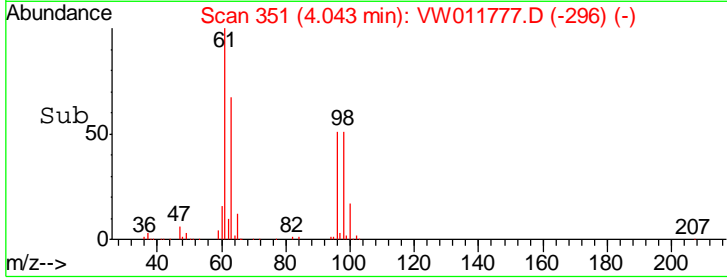
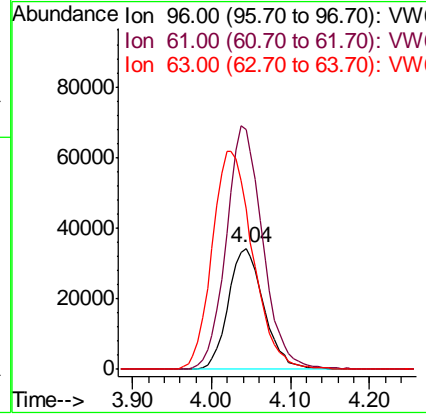
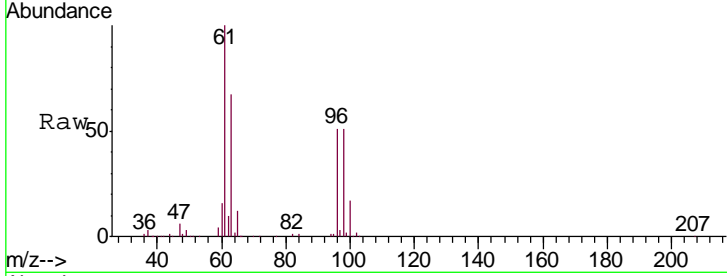




#12
 1,1-Dichloroethene
 Concen: 35.356 ug/L
 RT: 4.04 min Scan# 351
 Delta R.T. 0.01 min
 Lab File: VW011777.D
 Acq: 08 Aug 2019 16:38

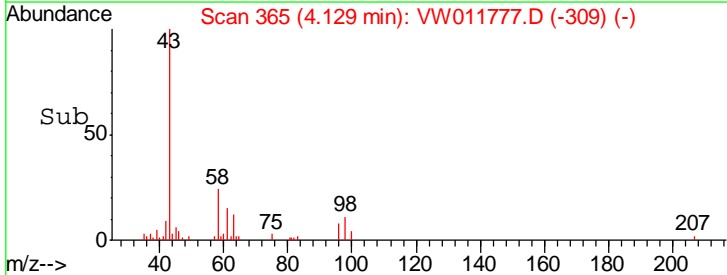
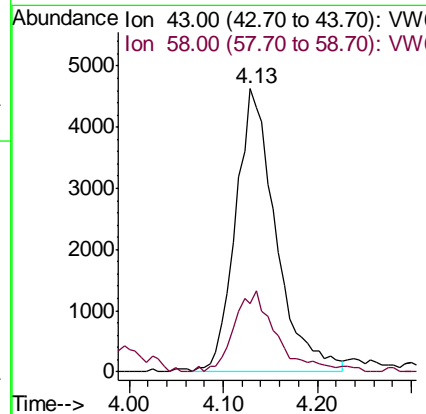
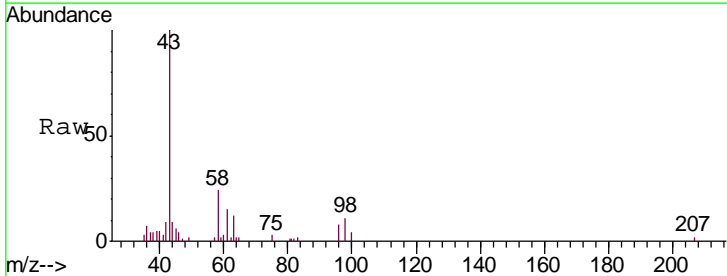
Instrument :
 MSVOA_W
 ClientSampled :
 ETOB4MSD

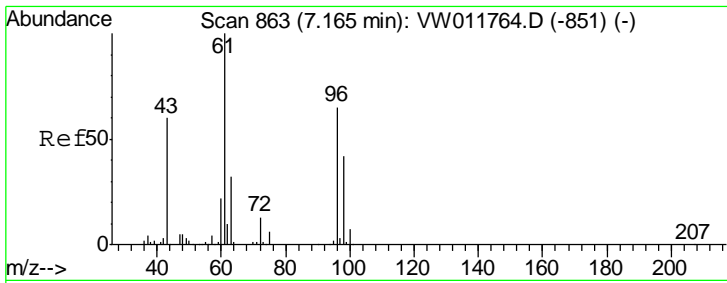
Tgt Ion	Resp	Lower	Upper
96	107802		
61	197.6	135.0	250.8
63	132.5	89.2	165.8



#13
 Acetone
 Concen: 9.603 ug/L
 RT: 4.13 min Scan# 365
 Delta R.T. 0.01 min
 Lab File: VW011777.D
 Acq: 08 Aug 2019 16:38

Tgt Ion	Resp	Lower	Upper
43	13844		
58	26.2	0.0	53.4

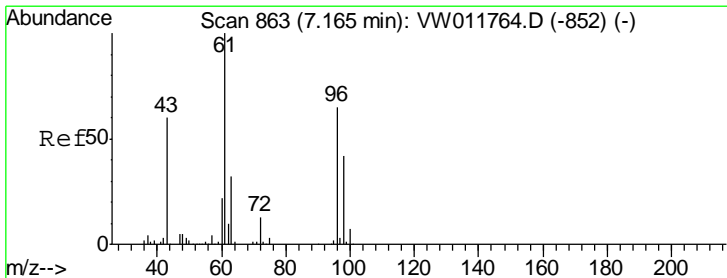
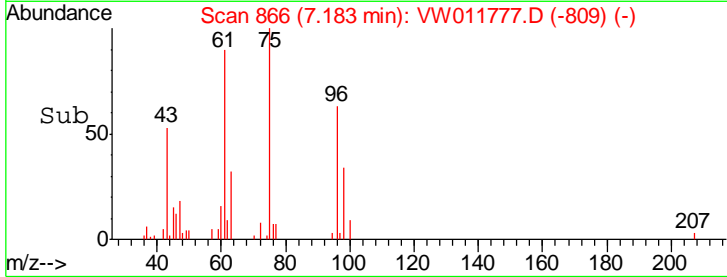
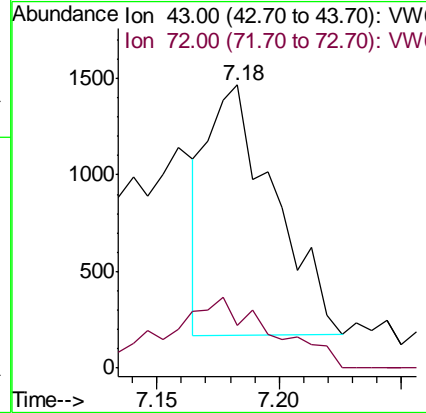
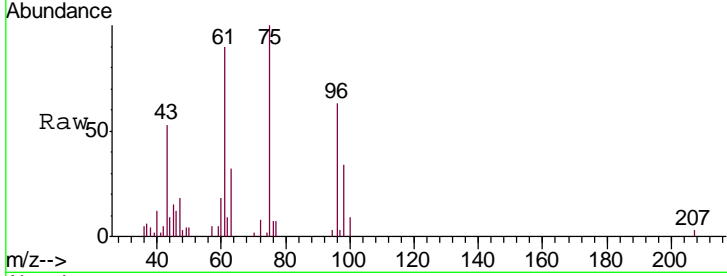




#21
 2-Butanone
 Concen: 1.357 ug/L
 RT: 7.18 min Scan# 866
 Delta R.T. 0.02 min
 Lab File: VW011777.D
 Acq: 08 Aug 2019 16:38

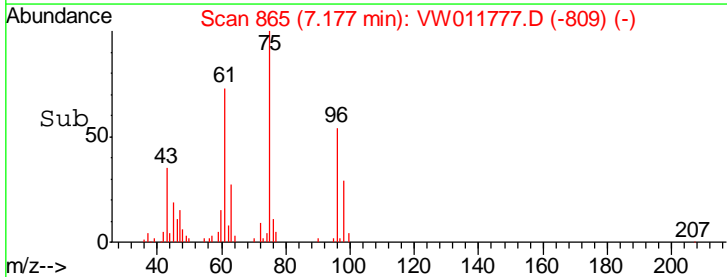
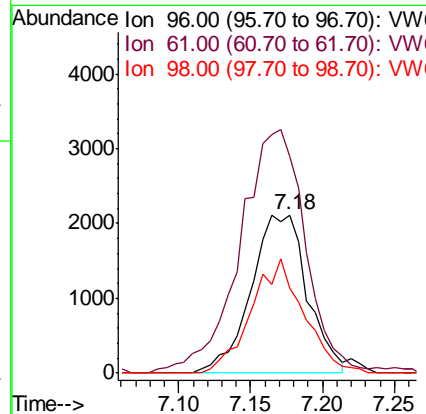
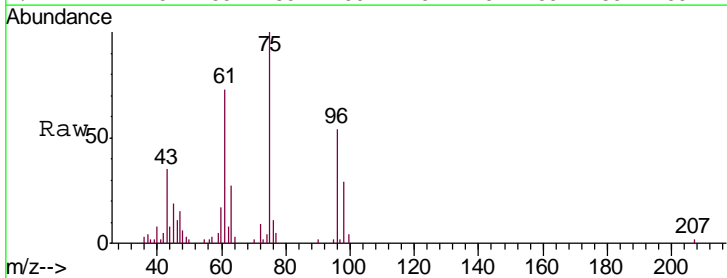
Instrument :
 MSVOA_W
 ClientSampled :
 ETOB4MSD

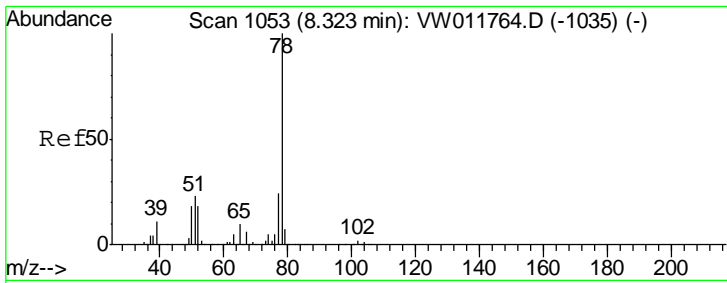
Tgt Ion: 43 Resp: 2452
 Ion Ratio Lower Upper
 43 100
 72 17.9 10.7 32.1



#22
 cis-1,2-Dichloroethene
 Concen: 1.743 ug/L
 RT: 7.18 min Scan# 865
 Delta R.T. 0.01 min
 Lab File: VW011777.D
 Acq: 08 Aug 2019 16:38

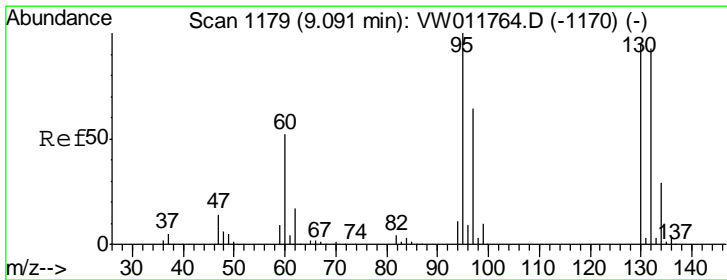
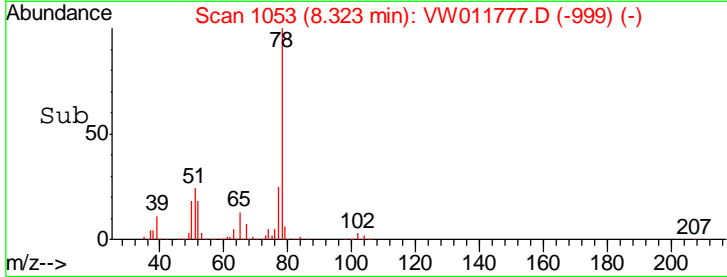
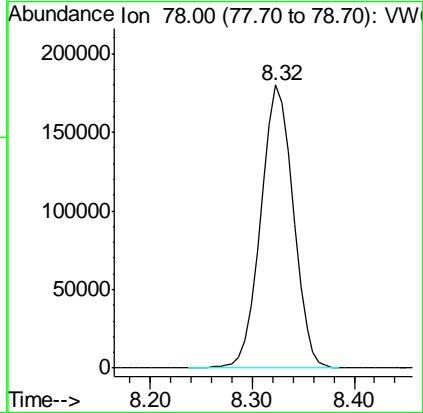
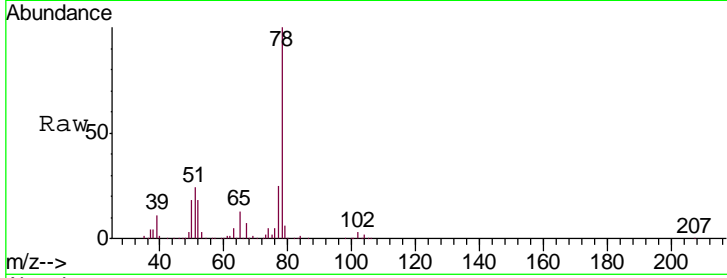
Tgt Ion: 96 Resp: 5743
 Ion Ratio Lower Upper
 96 100
 61 131.3 103.9 192.9
 98 51.7 43.5 80.9





#34
Benzene
Concen: 67.701 ug/L
RT: 8.32 min Scan# 1053
Delta R.T. -0.00 min
Lab File: VW011777.D
Acq: 08 Aug 2019 16:38
Tgt Ion: 78 Resp: 399977

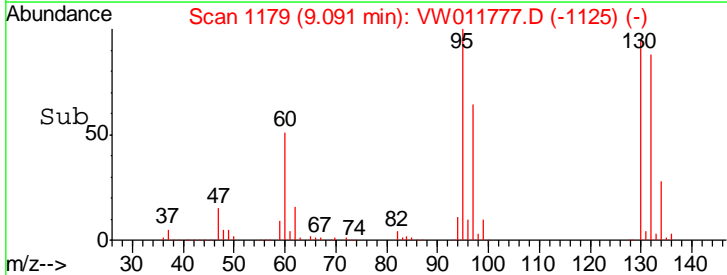
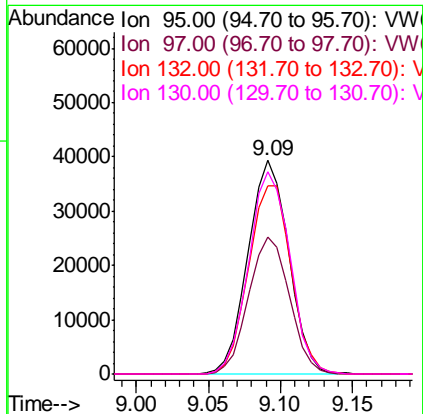
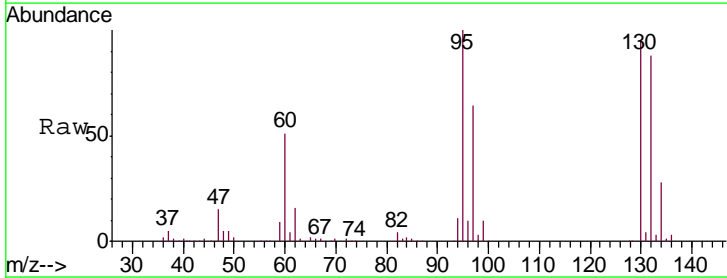
Instrument :
MSVOA_W
ClientSampled :
ETOB4MSD

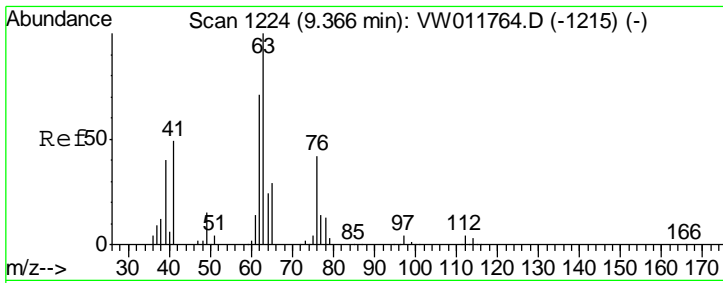


#35
Trichloroethene
Concen: 51.469 ug/L
RT: 9.09 min Scan# 1179
Delta R.T. -0.00 min
Lab File: VW011777.D
Acq: 08 Aug 2019 16:38

Tgt Ion: 95 Resp: 77195

Ion	Ratio	Lower	Upper
95	100		
97	64.2	44.8	83.2
132	91.8	65.0	120.6
130	95.5	68.0	126.4

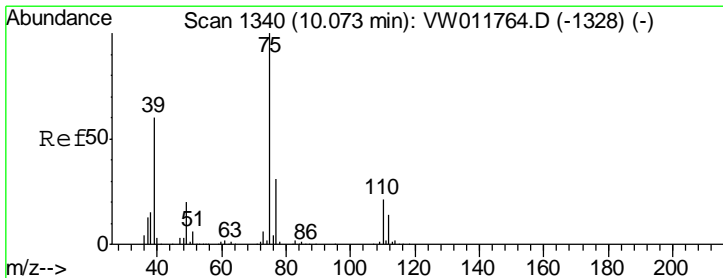
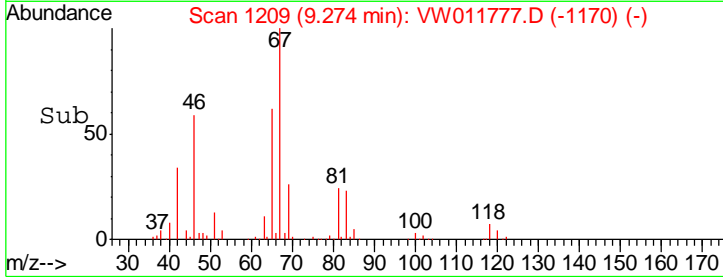
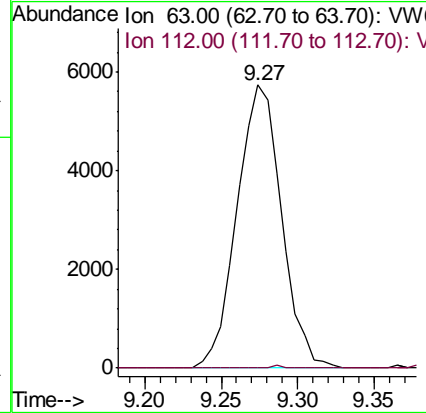
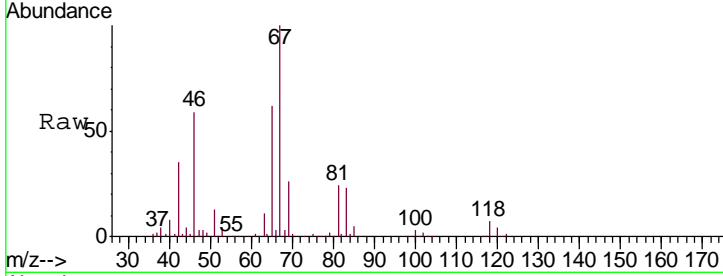




#40
 1,2-Dichloropropane
 Concen: 7.364 ug/L
 RT: 9.27 min Scan# 1209
 Delta R.T. -0.09 min
 Lab File: VW011777.D
 Acq: 08 Aug 2019 16:38

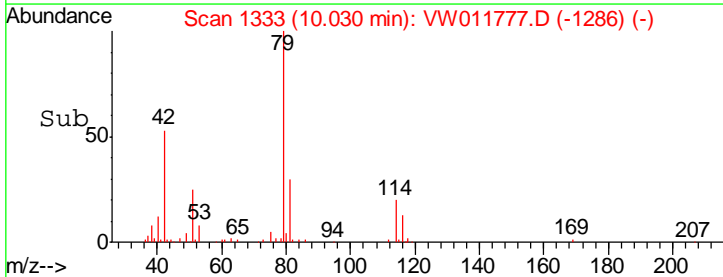
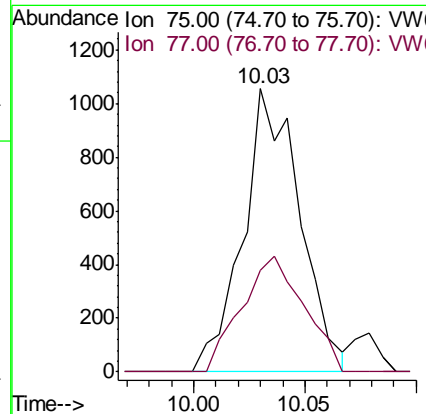
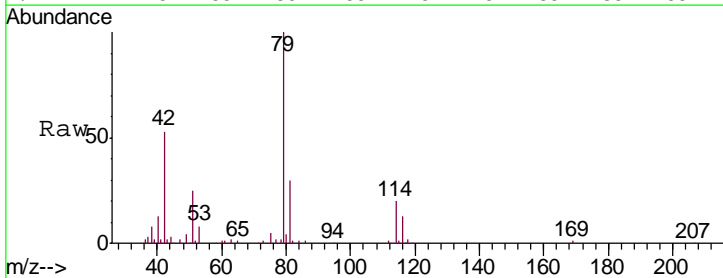
Instrument : MSVOA_W
 ClientSampled : ETOB4MSD

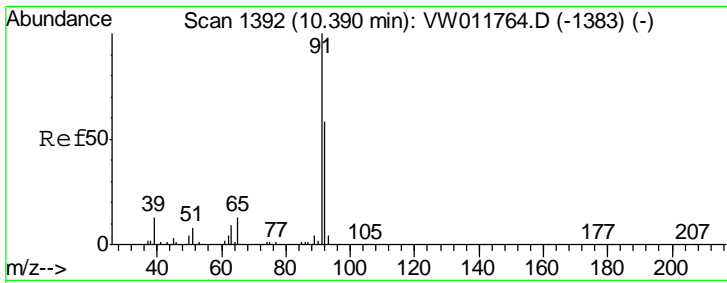
Tgt Ion	Resp	Lower	Upper
63	11613		
112	0.0	3.1	4.7#



#42
 cis-1,3-Dichloropropene
 Concen: 0.794 ug/L
 RT: 10.03 min Scan# 1333
 Delta R.T. -0.04 min
 Lab File: VW011777.D
 Acq: 08 Aug 2019 16:38

Tgt Ion	Resp	Lower	Upper
75	1873		
77	35.7	22.3	41.3

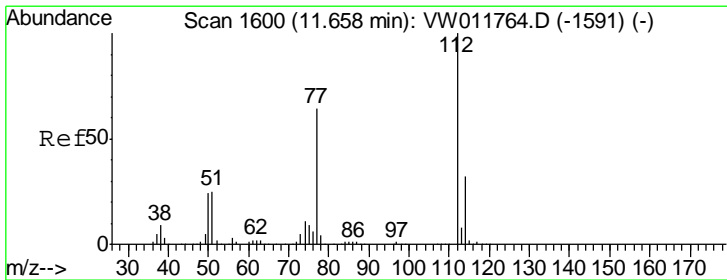
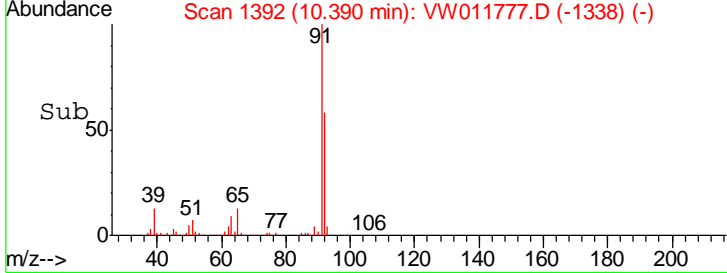
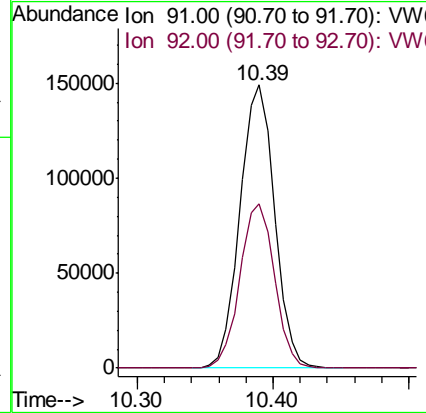
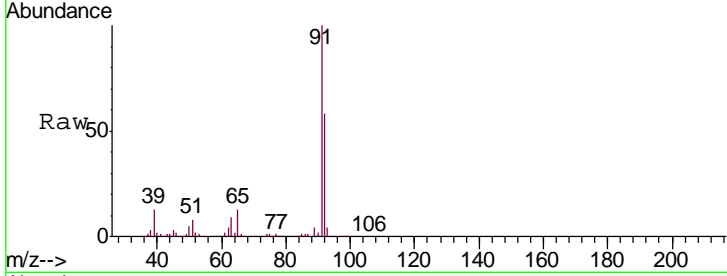




#44
 Toluene
 Concen: 44.198 ug/L
 RT: 10.39 min Scan# 1392
 Delta R.T. -0.00 min
 Lab File: VW011777.D
 Acq: 08 Aug 2019 16:38

Instrument :
 MSVOA_W
 ClientSampled :
 ETOB4MSD

Tgt Ion: 91 Resp: 265294
 Ion Ratio Lower Upper
 91 100
 92 57.9 40.9 76.0



#52
 Chlorobenzene
 Concen: 27.017 ug/L
 RT: 11.66 min Scan# 1600
 Delta R.T. -0.00 min
 Lab File: VW011777.D
 Acq: 08 Aug 2019 16:38

Tgt Ion: 112 Resp: 97839
 Ion Ratio Lower Upper
 112 100
 77 62.4 51.0 76.4
 114 32.9 22.4 41.6

