

Data Path : Z:\voasrv\HPCHEM1\MSVOA_W\Data\VW081123\
 Data File : VW026702.D
 Acq On : 11 Aug 2023 11:57
 Operator : SY/MD
 Sample : 03968-06
 Misc : 5.00g/10mL/MSVOA_W/SOIL
 ALS Vial : 1 Sample Multiplier: 1

Instrument :
 MSVOA_W
 ClientSampleId :
 A48X6

Quant Time: Aug 12 00:42:07 2023
 Quant Method : Z:\voasrv\HPCHEM1\MSVOA_W\Method\SFAMWLM081023SMA.M
 Quant Title : SFAM01.0
 QLast Update : Sat Aug 12 00:39:51 2023
 Response via : Initial Calibration

Compound	R.T.	QIon	Response	Conc	Units	Dev(Min)

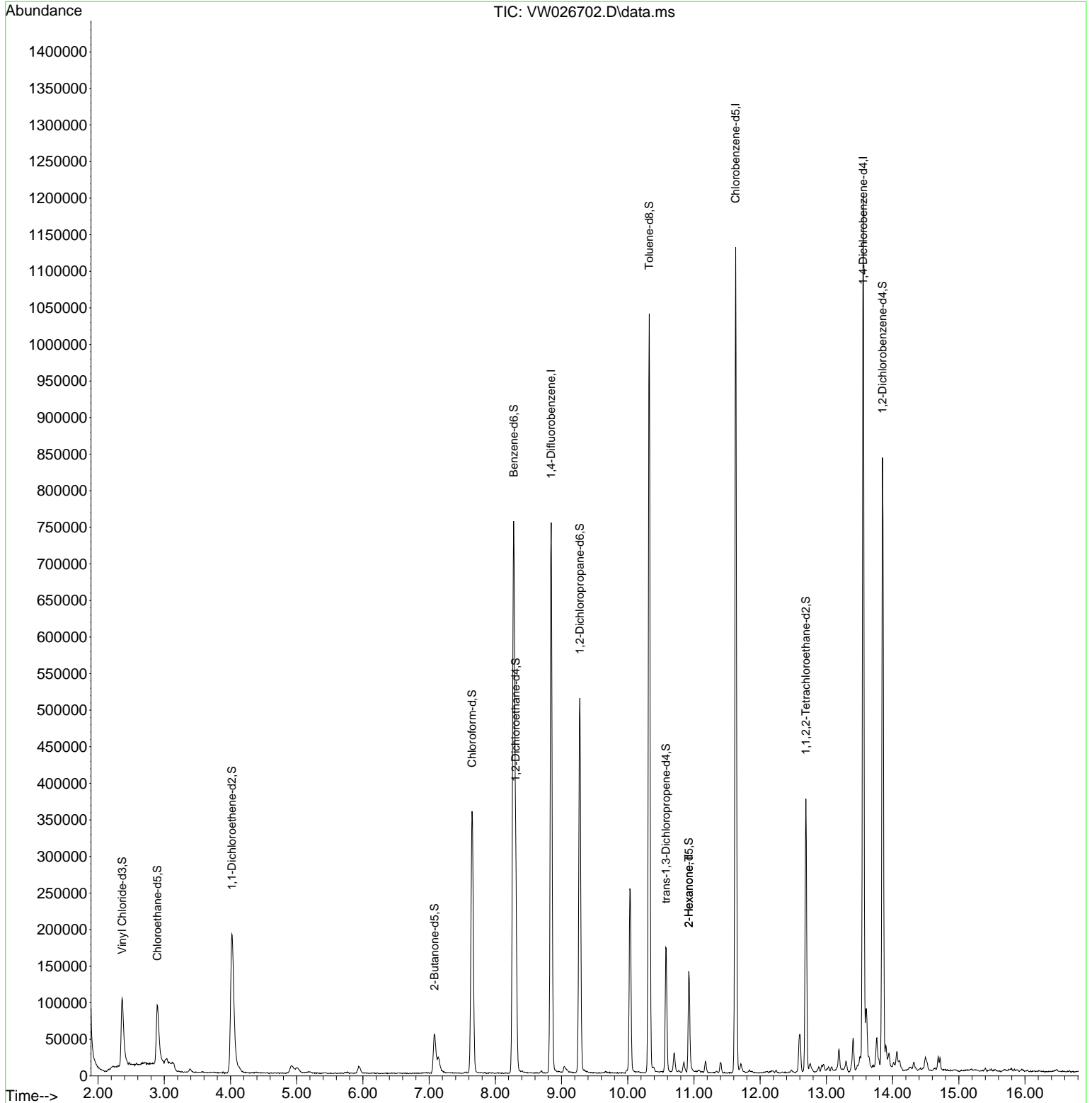
Internal Standards						
1) 1,4-Difluorobenzene	8.843	114	575603	25.000	ug/L	0.00
28) Chlorobenzene-d5	11.629	117	569365	25.000	ug/L	0.00
58) 1,4-Dichlorobenzene-d4	13.556	152	276184	25.000	ug/L	0.00
System Monitoring Compounds						
4) Vinyl Chloride-d3	2.363	65	165522	17.493	ug/L	0.00
Spiked Amount	25.000	Range 30 - 150	Recovery =	69.960%		
7) Chloroethane-d5	2.893	69	127929	18.182	ug/L	0.00
Spiked Amount	25.000	Range 30 - 150	Recovery =	72.720%		
11) 1,1-Dichloroethene-d2	4.021	65	82688	17.768	ug/L	0.00
Spiked Amount	25.000	Range 45 - 110	Recovery =	71.080%		
21) 2-Butanone-d5	7.081	46	94993	34.929	ug/L	0.00
Spiked Amount	50.000	Range 20 - 135	Recovery =	69.860%		
24) Chloroform-d	7.648	84	367540	19.025	ug/L	0.00
Spiked Amount	25.000	Range 40 - 150	Recovery =	76.080%		
26) 1,2-Dichloroethane-d4	8.307	65	214504	20.120	ug/L	0.00
Spiked Amount	25.000	Range 70 - 130	Recovery =	80.480%		
32) Benzene-d6	8.276	84	752567	19.178	ug/L	0.00
Spiked Amount	25.000	Range 20 - 135	Recovery =	76.720%		
36) 1,2-Dichloropropane-d6	9.276	67	236646	19.361	ug/L	0.00
Spiked Amount	25.000	Range 70 - 120	Recovery =	77.440%		
41) Toluene-d8	10.325	98	654462	19.429	ug/L	0.00
Spiked Amount	25.000	Range 30 - 130	Recovery =	77.720%		
43) trans-1,3-Dichloroprop...	10.575	79	94397	18.705	ug/L	0.00
Spiked Amount	25.000	Range 30 - 135	Recovery =	74.800%		
47) 2-Hexanone-d5	10.922	63	45038	35.067	ug/L	0.00
Spiked Amount	50.000	Range 20 - 135	Recovery =	70.140%		
56) 1,1,2,2-Tetrachloroeth...	12.690	84	188070	19.483	ug/L	0.00
Spiked Amount	25.000	Range 45 - 120	Recovery =	77.920%		
66) 1,2-Dichlorobenzene-d4	13.849	152	207540	20.995	ug/L	0.00
Spiked Amount	25.000	Range 75 - 120	Recovery =	83.960%		
Target Compounds						
48) 2-Hexanone	10.922	43	6691	1.331	ug/L #	41

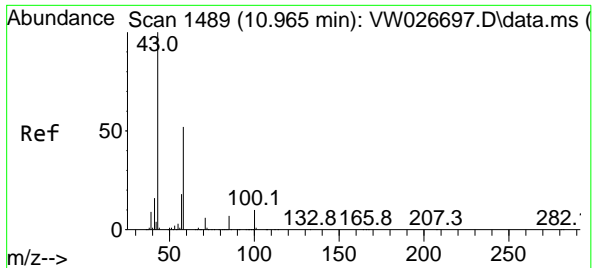
(#) = qualifier out of range (m) = manual integration (+) = signals summed

Data Path : Z:\voasrv\HPCHEM1\MSVOA_W\Data\VW081123\
 Data File : VW026702.D
 Acq On : 11 Aug 2023 11:57
 Operator : SY/MD
 Sample : 03968-06
 Misc : 5.00g/10mL/MSVOA_W/SOIL
 ALS Vial : 1 Sample Multiplier: 1

Instrument :
 MSVOA_W
 ClientSampleId :
 A48X6

Quant Time: Aug 12 00:42:07 2023
 Quant Method : Z:\voasrv\HPCHEM1\MSVOA_W\Method\SFAMWLM081023SMA.M
 Quant Title : SFAM01.0
 QLast Update : Sat Aug 12 00:39:51 2023
 Response via : Initial Calibration





#48
 2-Hexanone
 Concen: 1.331 ug/L
 RT: 10.922 min Scan# 14
 Delta R.T. -0.043 min
 Lab File: VW026702.D
 Acq: 11 Aug 2023 11:57

Instrument : MSVOA_W
 ClientSampleId : A48X6

Tgt Ion: 43 Resp: 6691

Ion	Ratio	Lower	Upper
43	100		
58	0.0	41.1	61.7#
57	34.8	14.3	21.5#
100	1.0	8.8	13.2#

