

Data Path : Z:\VOASRV\HPCHEM1\MSVOA W\DATA\VW081219\  
 Data File : VW011849.D  
 Acq On : 12 Aug 2019 13:59  
 Operator : SY/VA  
 Sample : K4229-05  
 Misc : 5.76G/5ML/MSVOA W/SOIL  
 ALS Vial : 12 Sample Multiplier: 1

Instrument :  
 MSVOA\_W  
 ClientSampleId :  
 2S-C3-(0)

Integration Parameters: RTEINT.P  
 Integrator: RTE  
 Smoothing : ON Filtering: 5  
 Sampling : 1 Min Area: 3 % of largest Peak  
 Start Thrs: 0.2 Max Peaks: 100  
 Stop Thrs : 0 Peak Location: TOP

If leading or trailing edge < 100 prefer < Baseline drop else tangent >  
 Peak separation: 5

Method : Z:\VOASRV\HPCHEM1\MSVOA\_W\METHOD\82W072719S.M  
 Title : SW846 8260

Signal : TIC

peak #	R.T. min	first scan	max scan	last scan	PK TY	peak height	corr. area	corr. % max.	% of total
1	2.148	34	40	48	rBV	16018	33219	2.78%	0.547%
2	4.129	355	365	378	rBV	29582	87023	7.28%	1.432%
3	4.916	484	494	503	rBV2	6675	25922	2.17%	0.427%
4	5.934	648	661	673	rBV5	5711	18061	1.51%	0.297%
5	7.141	848	859	870	rBV2	8692	27813	2.33%	0.458%
6	7.885	969	981	986	rBV	153770	369570	30.90%	6.081%
7	7.946	986	991	1002	rVB	286994	628031	52.51%	10.333%
8	8.305	1039	1050	1061	rBV	174492	383304	32.05%	6.307%
9	8.842	1129	1138	1148	rBV	445920	883389	73.86%	14.535%
10	10.098	1334	1344	1351	rBV5	4045	12410	1.04%	0.204%
11	10.323	1373	1381	1388	rBV	691069	1196009	100.00%	19.678%
12	10.390	1388	1392	1399	rVB	14282	25940	2.17%	0.427%
13	11.634	1587	1596	1605	rBV	548581	950189	79.45%	15.634%
14	12.622	1750	1758	1765	rBV	409286	677350	56.63%	11.145%
15	13.560	1905	1912	1921	rVB	449735	730365	61.07%	12.017%
16	14.072	1991	1996	2002	rVB	8471	13221	1.11%	0.218%
17	14.810	2108	2117	2121	rBV4	9363	16005	1.34%	0.263%

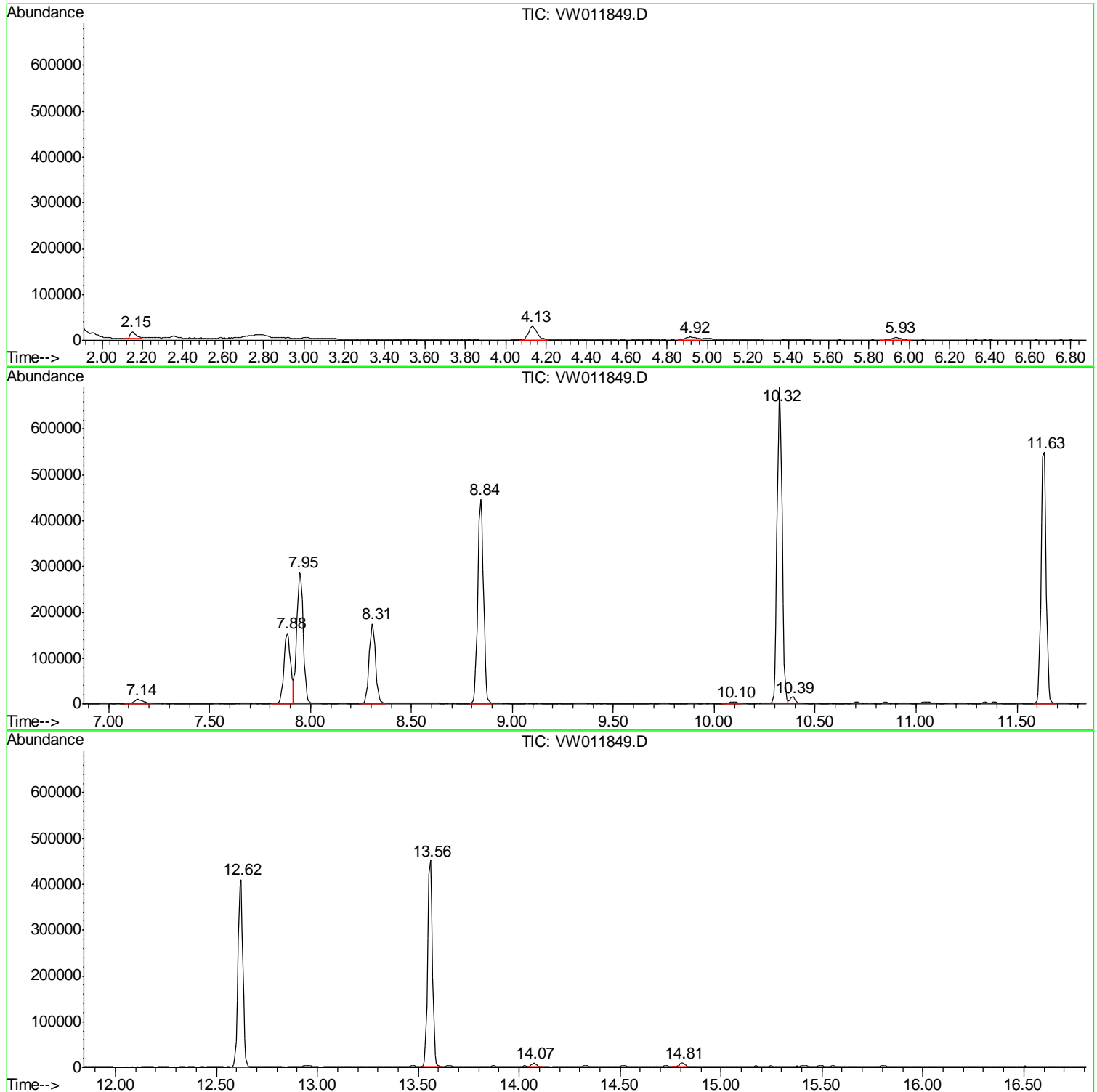
Sum of corrected areas: 6077821

Data Path : Z:\VOASRV\HPCHEM1\MSVOA W\DATA\VW081219\  
Data File : VW011849.D  
Acq On : 12 Aug 2019 13:59  
Operator : SY/VA  
Sample : K4229-05  
Misc : 5.76G/5ML/MSVOA W/SOIL  
ALS Vial : 12 Sample Multiplier: 1

Instrument :  
MSVOA\_W  
ClientSampled :  
2S-C3-(0)

Quant Method : Z:\VOASRV\HPCHEM1\MSVOA\_W\METHOD\82W072719S.M  
Quant Title : SW846 8260

TIC Library : C:\DATABASE\NIST11.L  
TIC Integration Parameters: LSCINT.P



Data Path : Z:\VOASRV\HPCHEM1\MSVOA\_W\DATA\VW081219\  
Data File : VW011849.D  
Acq On : 12 Aug 2019 13:59  
Operator : SY/VA  
Sample : K4229-05  
Misc : 5.76G/5ML/MSVOA\_W/SOIL  
ALS Vial : 12 Sample Multiplier: 1

Instrument :  
MSVOA\_W  
ClientSampleId :  
2S-C3-(0)

Quant Method : Z:\VOASRV\HPCHEM1\MSVOA\_W\METHOD\82W072719S.M  
Quant Title : SW846 8260

TIC Library : C:\DATABASE\NIST11.L  
TIC Integration Parameters: LSCINT.P

No Library Search Compounds Detected

\*\*\*\*\*

Data Path : Z:\VOASRV\HPCHEM1\MSVOA\_W\DATA\VW081219\  
Data File : VW011849.D  
Acq On : 12 Aug 2019 13:59  
Operator : SY/VA  
Sample : K4229-05  
Misc : 5.76G/5ML/MSVOA\_W/SOIL  
ALS Vial : 12 Sample Multiplier: 1

Instrument :  
MSVOA\_W  
ClientSampleId :  
2S-C3-(0)

Quant Method : Z:\VOASRV\HPCHEM1\MSVOA\_W\METHOD\82W072719S.M  
Quant Title : SW846 8260

TIC Library : C:\DATABASE\NIST11.L  
TIC Integration Parameters: LSCINT.P

TIC Top Hit name	RT	EstConc	Units	Response	--Internal Standard--			
					#	RT	Resp	Conc

---