

Data Path : Z:\VOASRV\HPCHEM1\MSVOA_W\DATA\VW081318\
 Data File : VW004620.D
 Acq On : 11 Aug 2018 02:51
 Operator : SY/AP
 Sample : J4272-05
 Misc : 6.57G/5ML/MSVOA_W/SOIL
 ALS Vial : 39 Sample Multiplier: 1

Instrument :
 MSVOA_W
 ClientSampleId :
 JC-03-080918-C

Quant Time: Aug 11 03:58:19 2018
 Quant Method : Z:\VOASRV\HPCHEM1\MSVOA_W\METHOD\82W080618S.M
 Quant Title : SW846 8260
 QLast Update : Tue Aug 07 08:22:01 2018
 Response via : Initial Calibration

Internal Standards	R.T.	QIon	Response	Conc	Units	Dev(Min)
1) Pentafluorobenzene	7.95	168	691838	50.00	ug/l	0.00
34) 1,4-Difluorobenzene	8.85	114	1213461	50.00	ug/l	0.00
63) Chlorobenzene-d5	11.63	117	942132	50.00	ug/l	0.00
72) 1,4-Dichlorobenzene-d4	13.57	152	373497	50.00	ug/l	0.00

System Monitoring Compounds

33) 1,2-Dichloroethane-d4	8.31	65	392592	51.26	ug/l	0.00
Spiked Amount	50.000		Recovery	=	102.52%	
35) Dibromofluoromethane	7.88	113	351920	43.50	ug/l	0.00
Spiked Amount	50.000		Recovery	=	87.00%	
50) Toluene-d8	10.33	98	925577	30.01	ug/l	0.00
Spiked Amount	50.000		Recovery	=	60.02%	
62) 4-Bromofluorobenzene	12.62	95	337592	30.38	ug/l	0.00
Spiked Amount	50.000		Recovery	=	60.76%	

Target Compounds

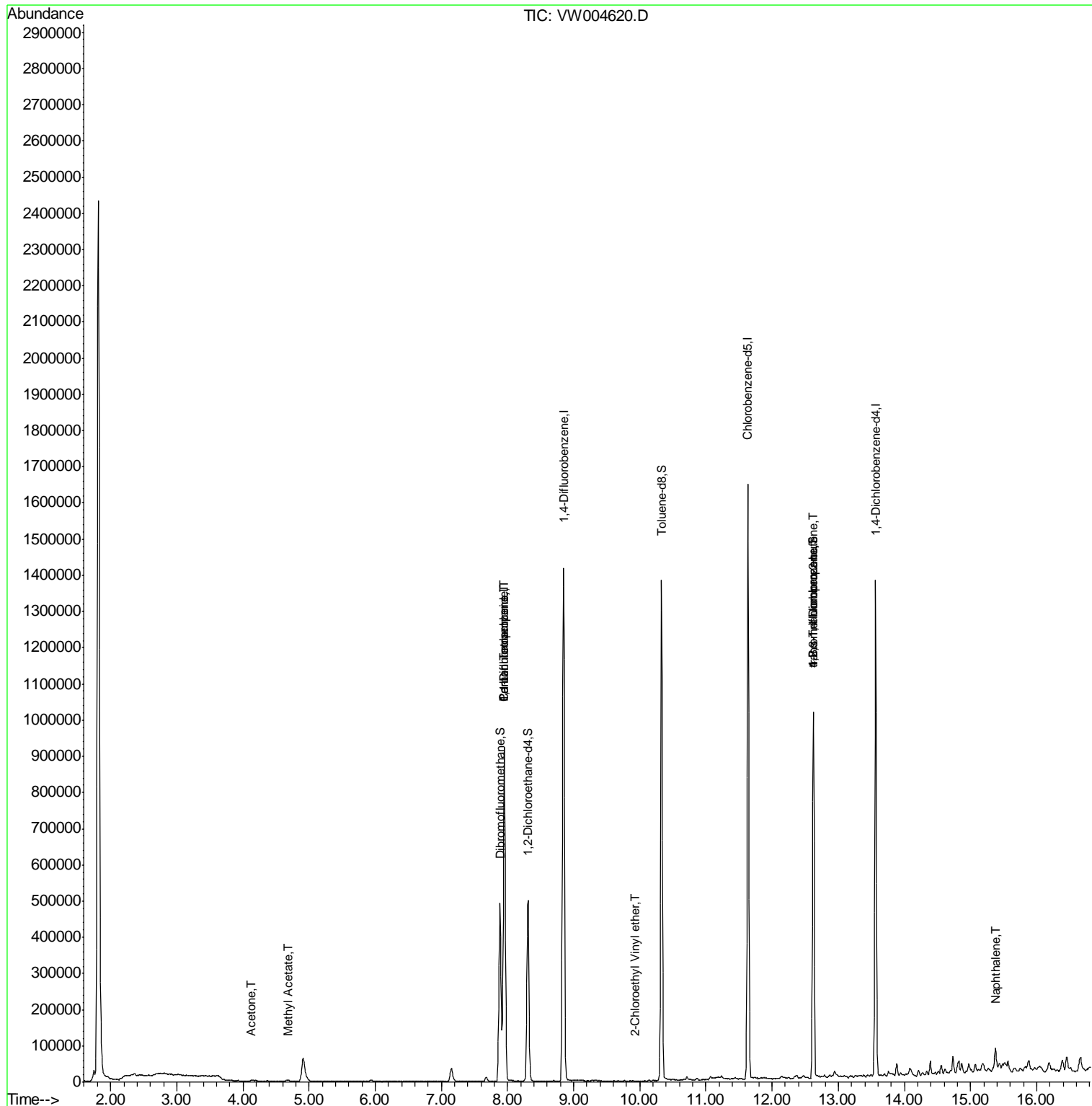
					Qvalue
16) Acetone	4.13	43	4513	2.360	ug/l 99
18) Methyl Acetate	4.68	43	6872	1.441	ug/l 97
20) Methylene Chloride	4.91	84	56587	Below Cal	99
36) 1,1-Dichloropropene	7.95	75	53447	4.091	ug/l # 49
38) Carbon Tetrachloride	7.95	117	68017	5.785	ug/l # 16
58) 2-Chloroethyl Vinyl ether	9.93	63	161	8.979	ug/l # 48
76) 1,2,3-Trichloropropane	12.62	75	166201	43.003	ug/l # 100
81) trans-1,4-Dichloro-2-buten	12.62	75	166201	102.944	ug/l # 12
95) Naphthalene	15.38	128	57084	6.135	ug/l 97

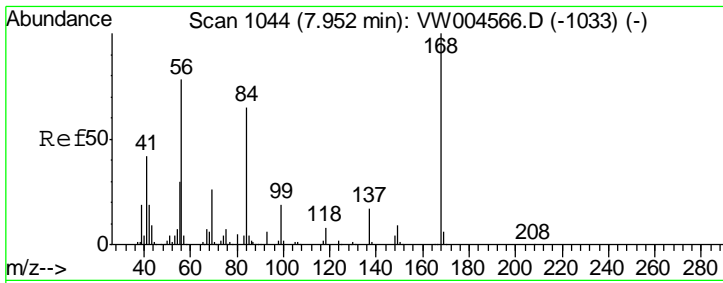
(#) = qualifier out of range (m) = manual integration (+) = signals summed

Data Path : Z:\VOASRV\HPCHEM1\MSVOA_W\DATA\VW081318\
 Data File : VW004620.D
 Acq On : 11 Aug 2018 02:51
 Operator : SY/AP
 Sample : J4272-05
 Misc : 6.57G/5ML/MSVOA_W/SOIL
 ALS Vial : 39 Sample Multiplier: 1

Instrument :
 MSVOA_W
 ClientSampleId :
 JC-03-080918-C

Quant Time: Aug 11 03:58:19 2018
 Quant Method : Z:\VOASRV\HPCHEM1\MSVOA_W\METHOD\82W080618S.M
 Quant Title : SW846 8260
 QLast Update : Tue Aug 07 08:22:01 2018
 Response via : Initial Calibration

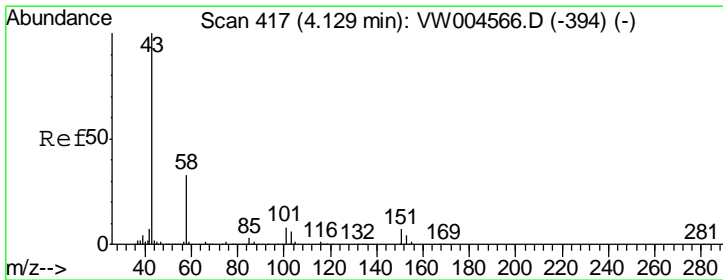
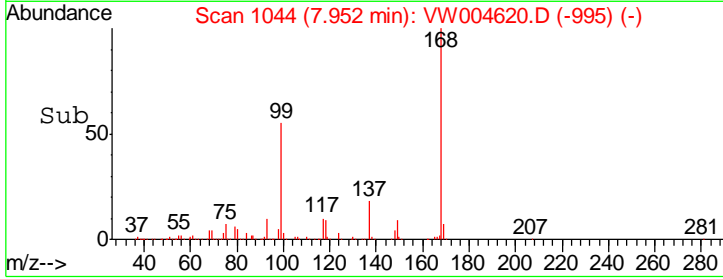
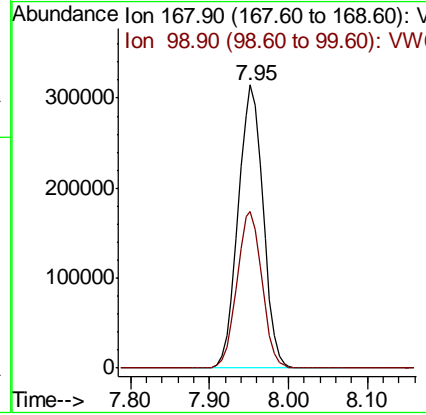
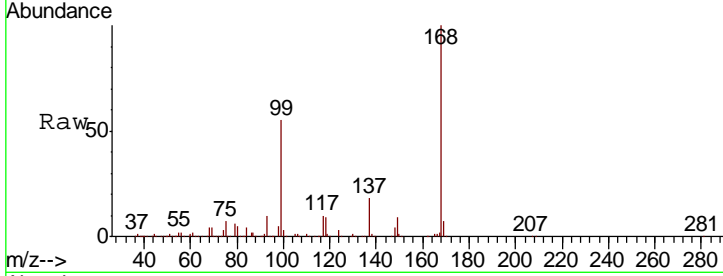




#1
 Pentafluorobenzene
 Concen: 50.000 ug/l
 RT: 7.95 min Scan# 1044
 Delta R.T. 0.00 min
 Lab File: VW004620.D
 Acq: 11 Aug 2018 02:51

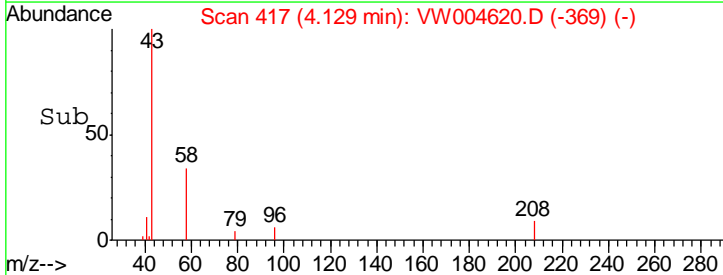
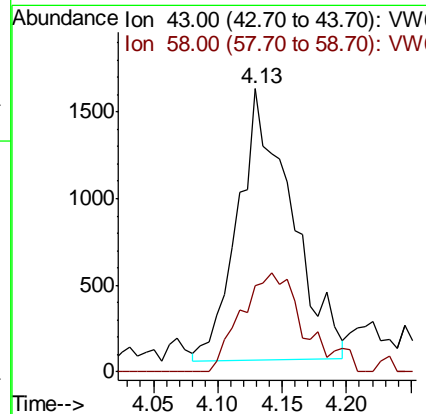
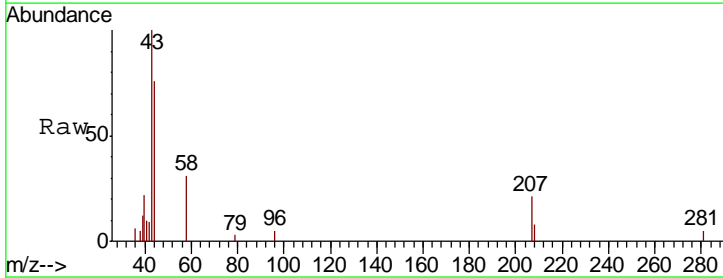
Instrument : MSVOA_W
 ClientSampled : JC-03-080918-C

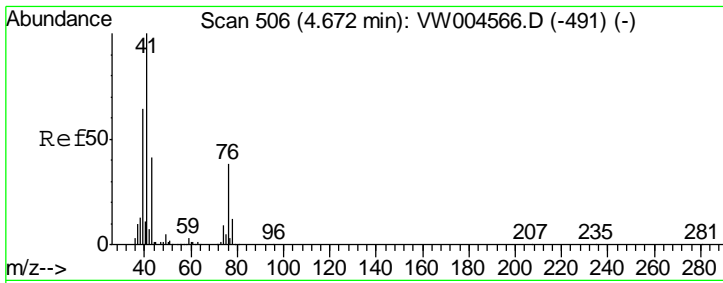
Tgt Ion: 168 Resp: 691838
 Ion Ratio Lower Upper
 168 100
 99 55.4 44.1 66.1



#16
 Acetone
 Concen: 2.360 ug/l
 RT: 4.13 min Scan# 417
 Delta R.T. -0.01 min
 Lab File: VW004620.D
 Acq: 11 Aug 2018 02:51

Tgt Ion: 43 Resp: 4513
 Ion Ratio Lower Upper
 43 100
 58 32.8 26.8 40.2

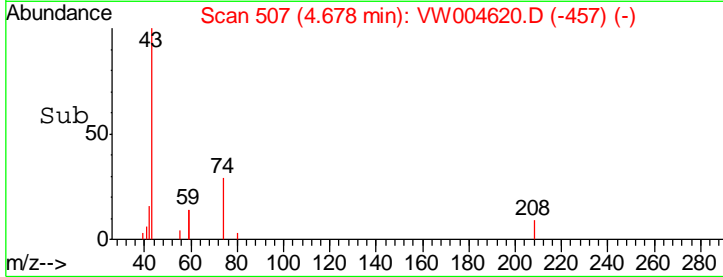
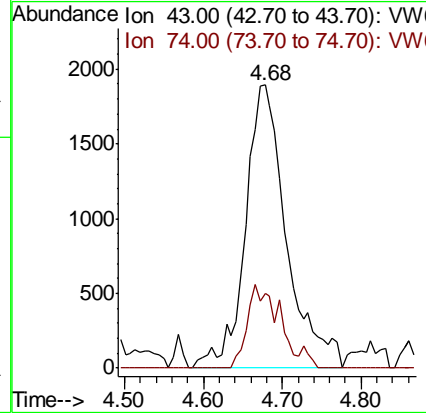
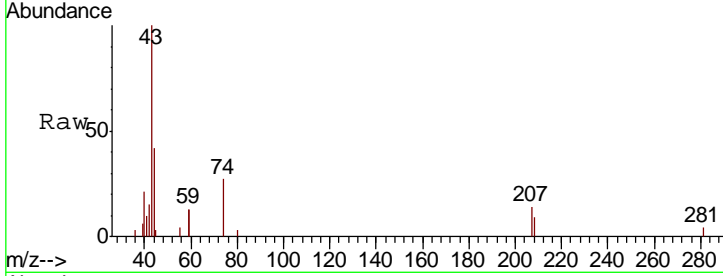




#18
 Methyl Acetate
 Concen: 1.441 ug/l
 RT: 4.68 min Scan# 507
 Delta R.T. 0.01 min
 Lab File: VW004620.D
 Acq: 11 Aug 2018 02:51

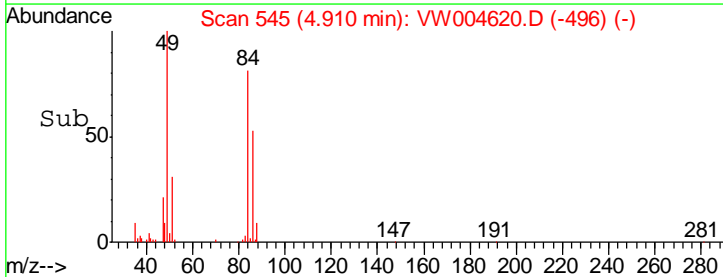
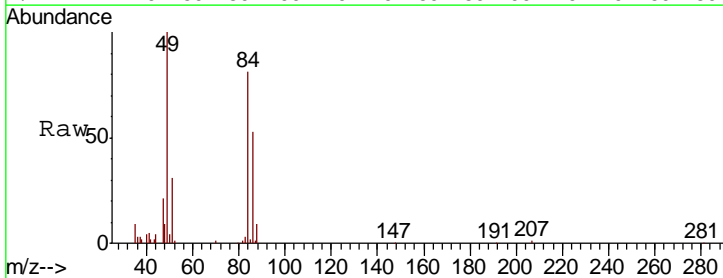
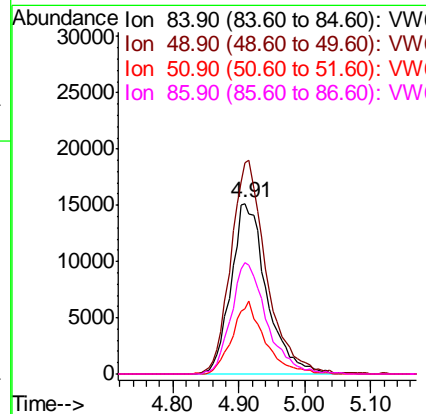
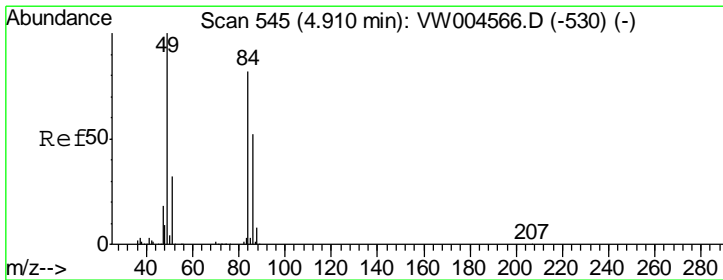
Instrument :
 MSVOA_W
 ClientSampled :
 JC-03-080918-C

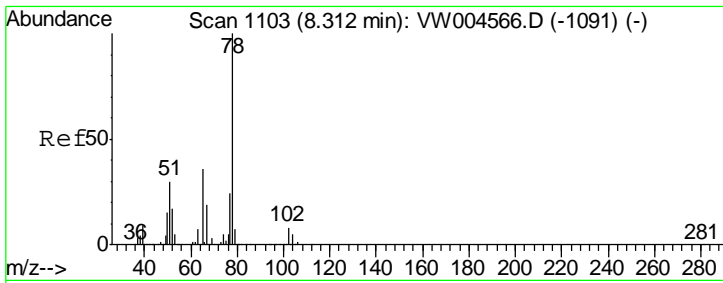
Tgt Ion: 43 Resp: 6872
 Ion Ratio Lower Upper
 43 100
 74 22.4 19.1 28.7



#20
 Methylene Chloride
 Concen: Below Cal
 RT: 4.91 min Scan# 545
 Delta R.T. 0.00 min
 Lab File: VW004620.D
 Acq: 11 Aug 2018 02:51

Tgt Ion: 84 Resp: 56587
 Ion Ratio Lower Upper
 84 100
 49 123.6 99.6 149.4
 51 38.4 31.0 46.4
 86 65.6 51.5 77.3

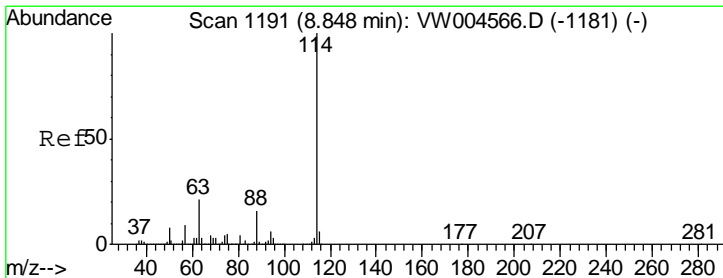
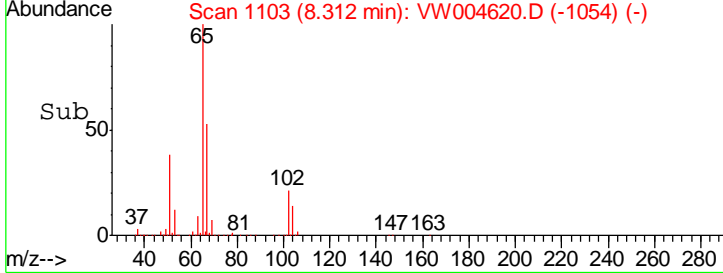
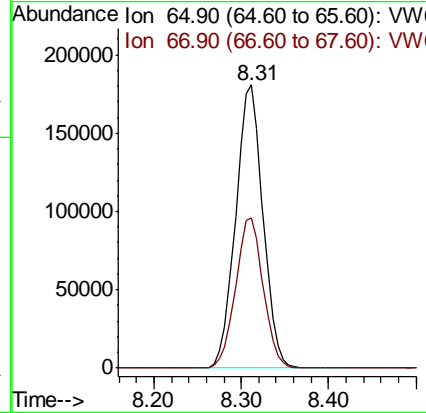
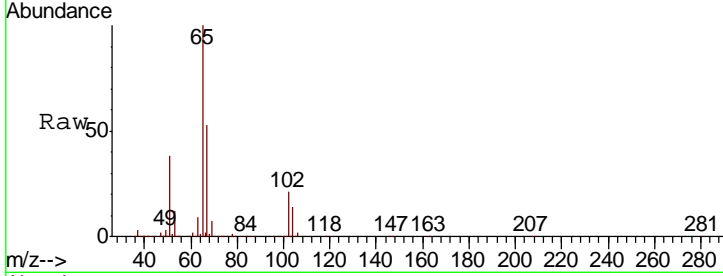




#33
 1,2-Dichloroethane-d4
 Concen: 51.263 ug/l
 RT: 8.31 min Scan# 1103
 Delta R.T. 0.00 min
 Lab File: VW004620.D
 Acq: 11 Aug 2018 02:51

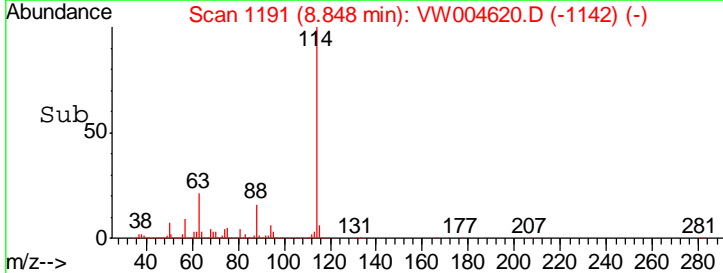
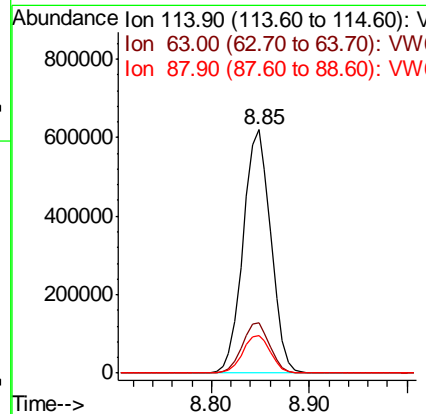
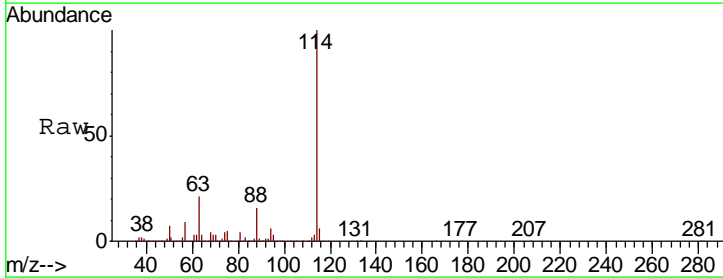
Instrument :
 MSVOA_W
 ClientSampled :
 JC-03-080918-C

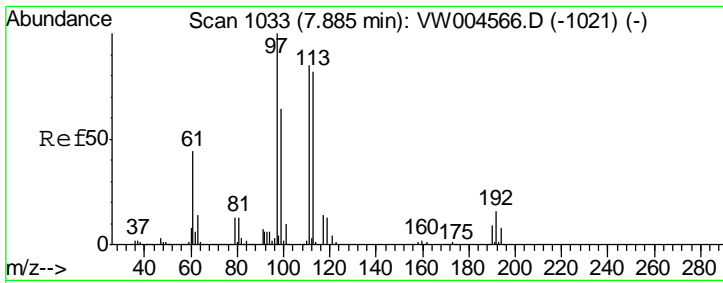
Tgt Ion	Resp	Lower	Upper
65	100		
67	53.8	0.0	109.0



#34
 1,4-Difluorobenzene
 Concen: 50.000 ug/l
 RT: 8.85 min Scan# 1191
 Delta R.T. 0.00 min
 Lab File: VW004620.D
 Acq: 11 Aug 2018 02:51

Tgt Ion	Resp	Lower	Upper
114	100		
63	20.6	0.0	42.4
88	15.7	0.0	31.2

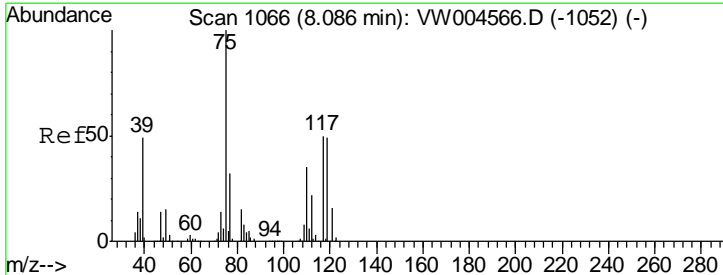
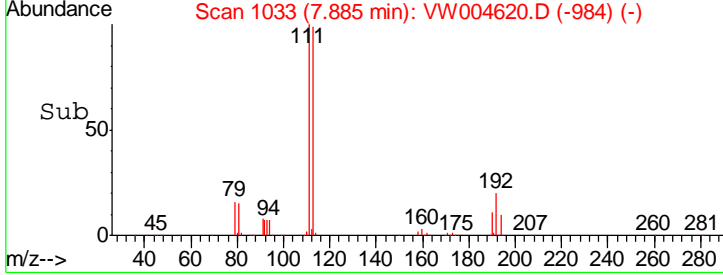
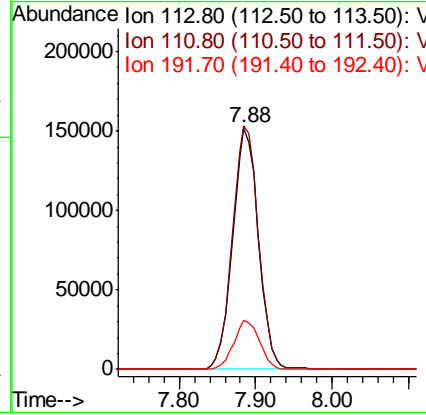
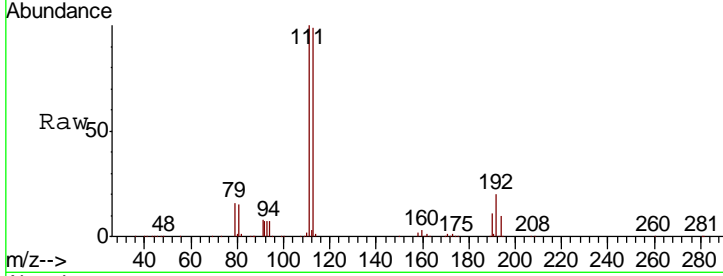




#35
 Dibromofluoromethane
 Concen: 43.495 ug/l
 RT: 7.88 min Scan# 1033
 Delta R.T. 0.00 min
 Lab File: VW004620.D
 Acq: 11 Aug 2018 02:51

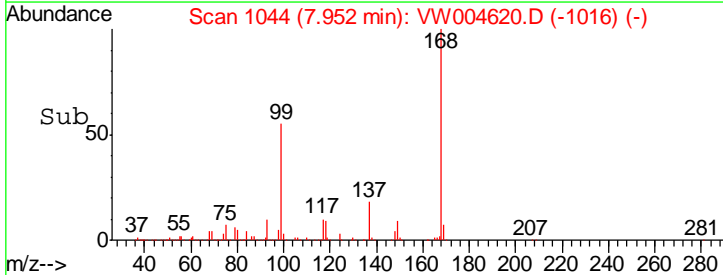
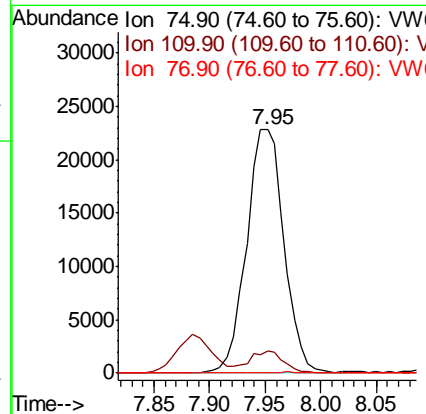
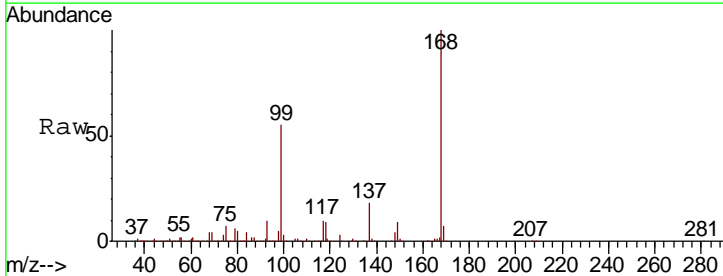
Instrument :
 MSVOA_W
 ClientSampled :
 JC-03-080918-C

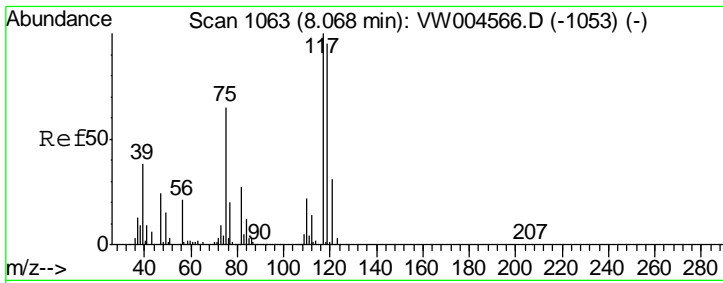
Tgt Ion	Resp	Lower	Upper
113	100		
111	102.6	82.9	124.3
192	20.4	15.8	23.6



#36
 1,1-Dichloropropene
 Concen: 4.091 ug/l
 RT: 7.95 min Scan# 1044
 Delta R.T. -0.13 min
 Lab File: VW004620.D
 Acq: 11 Aug 2018 02:51

Tgt Ion	Resp	Lower	Upper
75	100		
110	8.2	17.4	52.2#
77	0.1	24.7	37.1#

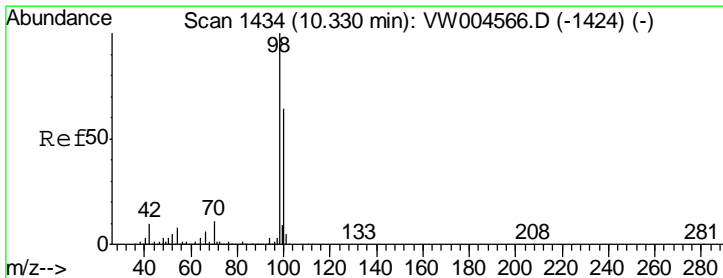
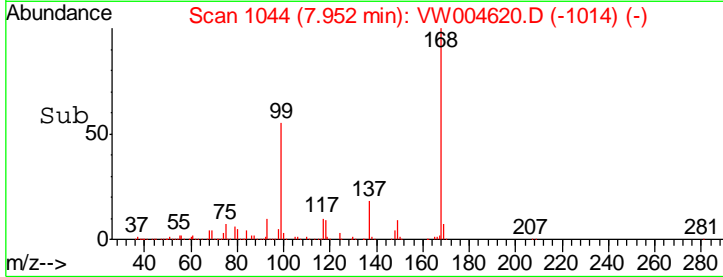
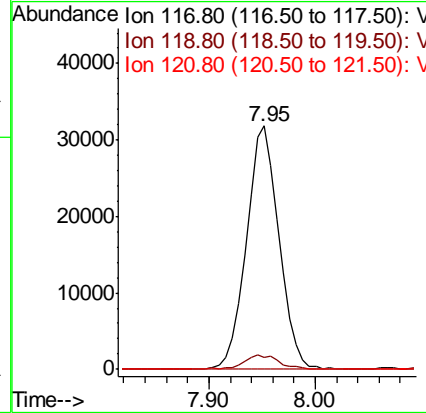
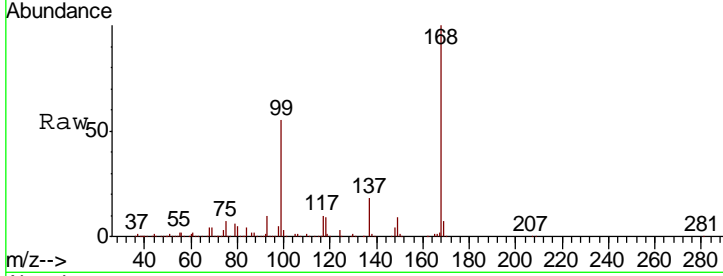




#38
 Carbon Tetrachloride
 Concen: 5.785 ug/l
 RT: 7.95 min Scan# 1044
 Delta R.T. -0.12 min
 Lab File: VW004620.D
 Acq: 11 Aug 2018 02:51

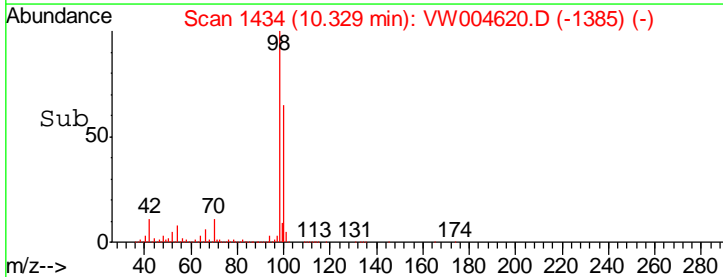
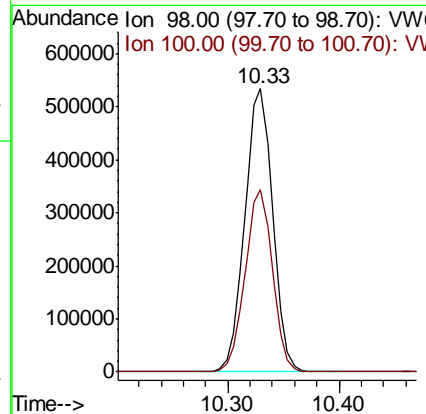
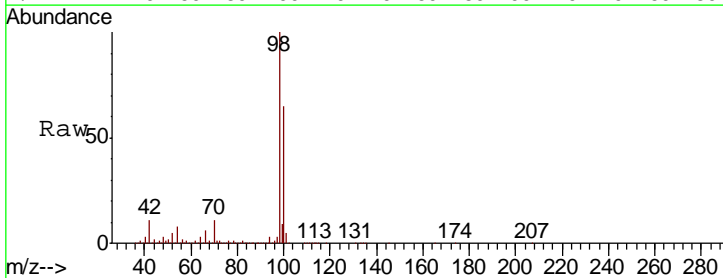
Instrument :
 MSVOA_W
 ClientSampled :
 JC-03-080918-C

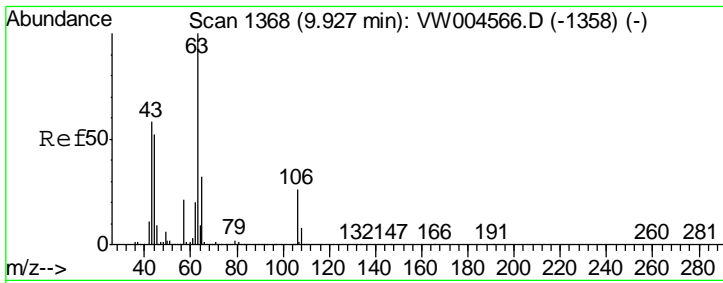
Tgt Ion	Resp	Lower	Upper
117	100		
119	5.1	76.1	114.1#
121	0.0	24.2	36.4#



#50
 Toluene-d8
 Concen: 30.007 ug/l
 RT: 10.33 min Scan# 1434
 Delta R.T. 0.00 min
 Lab File: VW004620.D
 Acq: 11 Aug 2018 02:51

Tgt Ion	Resp	Lower	Upper
98	100		
100	63.5	51.4	77.2

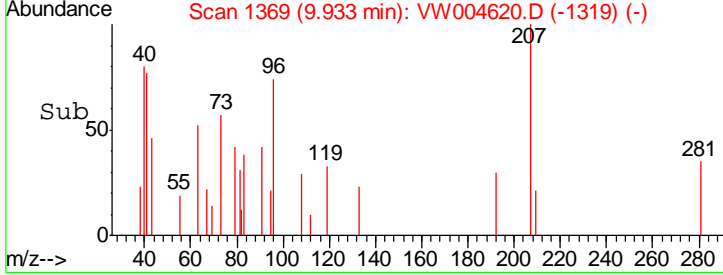
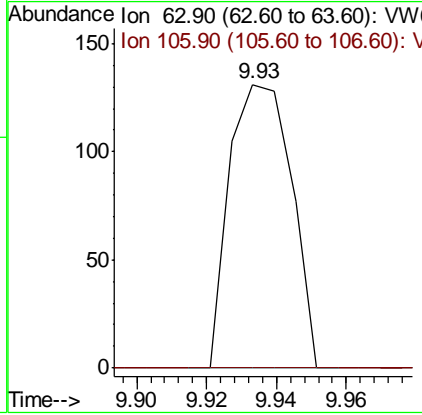
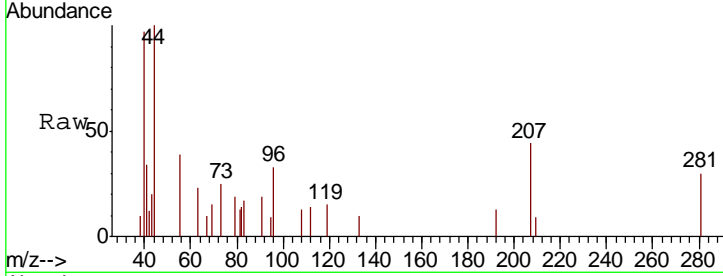




#58
 2-Chloroethyl Vinyl ether
 Concen: 8.979 ug/l
 RT: 9.93 min Scan# 1369
 Delta R.T. 0.01 min
 Lab File: VW004620.D
 Acq: 11 Aug 2018 02:51

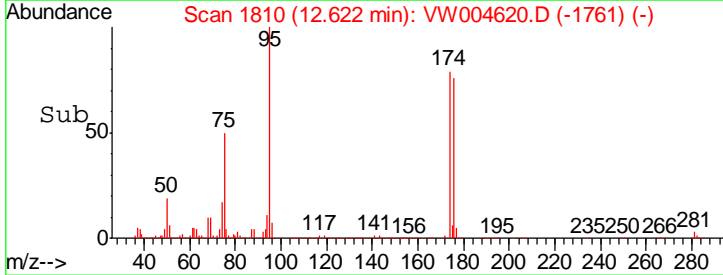
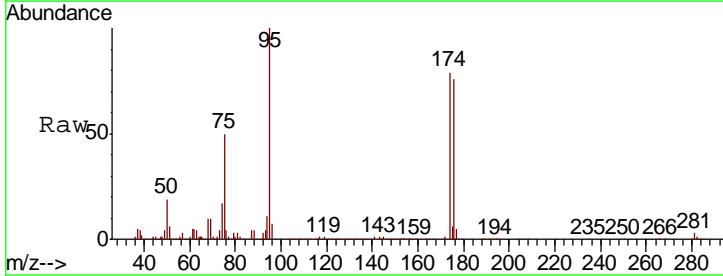
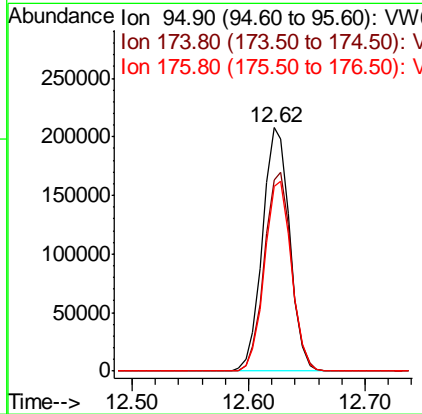
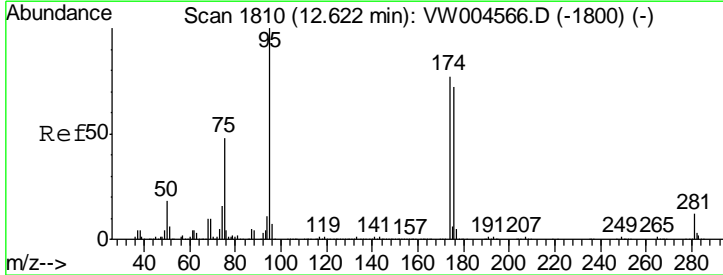
Instrument : MSVOA_W
 ClientSampled : JC-03-080918-C

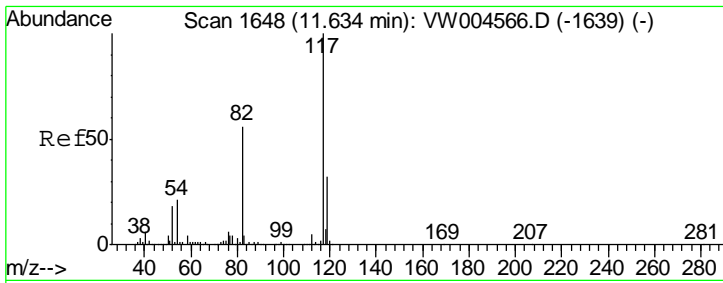
Tgt Ion: 63 Resp: 161
 Ion Ratio Lower Upper
 63 100
 106 0.0 21.3 31.9#



#62
 4-Bromofluorobenzene
 Concen: 30.383 ug/l
 RT: 12.62 min Scan# 1810
 Delta R.T. 0.00 min
 Lab File: VW004620.D
 Acq: 11 Aug 2018 02:51

Tgt Ion: 95 Resp: 337592
 Ion Ratio Lower Upper
 95 100
 174 81.6 0.0 160.4
 176 77.7 0.0 153.2



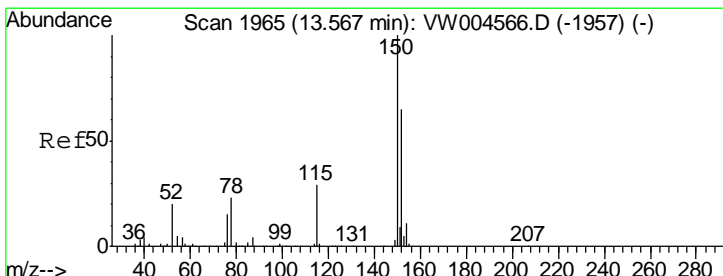
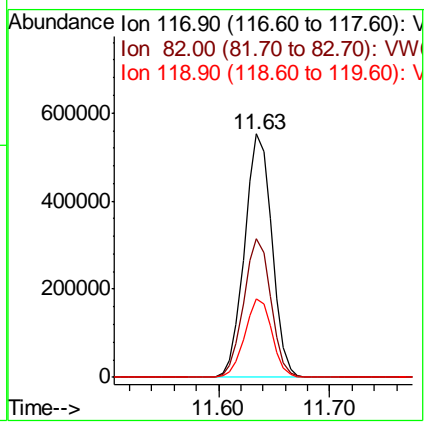
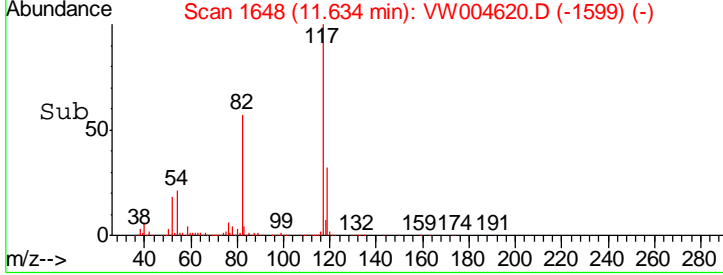
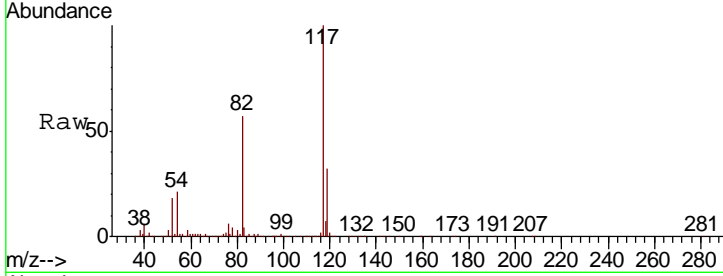


#63
 Chlorobenzene-d5
 Concen: 50.000 ug/l
 RT: 11.63 min Scan# 1648
 Delta R.T. 0.00 min
 Lab File: VW004620.D
 Acq: 11 Aug 2018 02:51

Instrument : MSVOA_W
 ClientSampled : JC-03-080918-C

Tgt Ion: 117 Resp: 942132

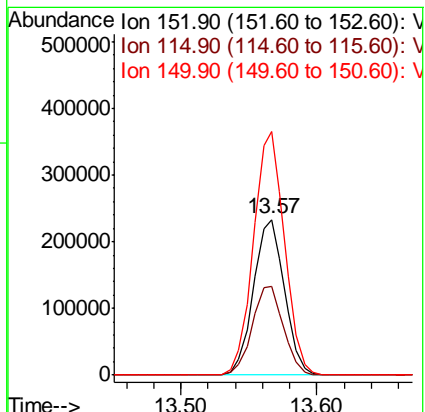
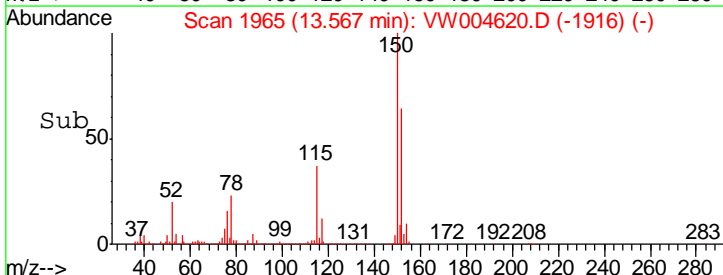
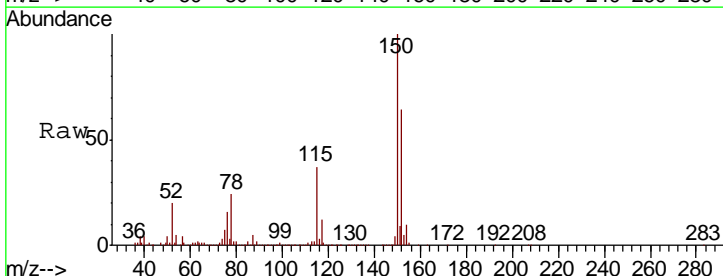
Ion	Ratio	Lower	Upper
117	100		
82	56.9	45.3	67.9
119	32.4	26.2	39.4

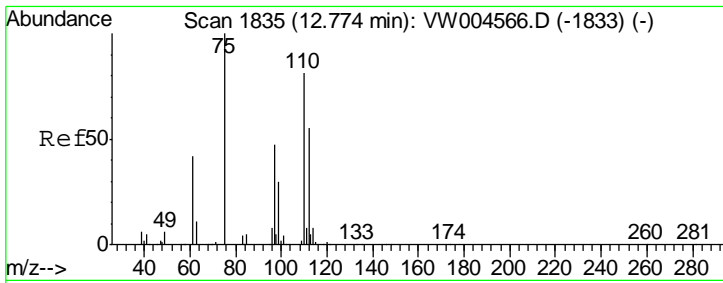


#72
 1,4-Dichlorobenzene-d4
 Concen: 50.000 ug/l
 RT: 13.57 min Scan# 1965
 Delta R.T. 0.00 min
 Lab File: VW004620.D
 Acq: 11 Aug 2018 02:51

Tgt Ion: 152 Resp: 373497

Ion	Ratio	Lower	Upper
152	100		
115	57.5	29.1	87.3
150	156.8	0.0	349.6

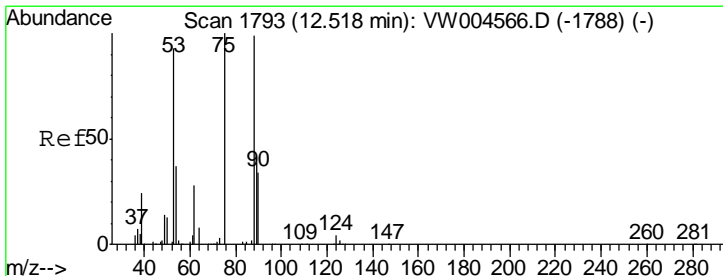
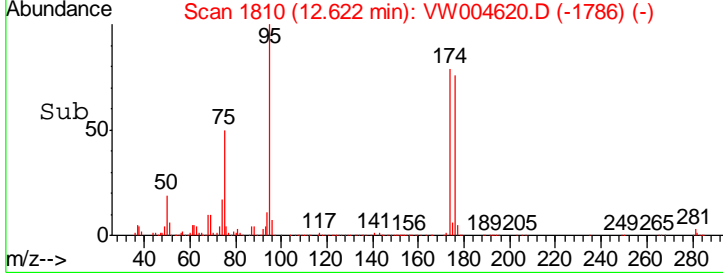
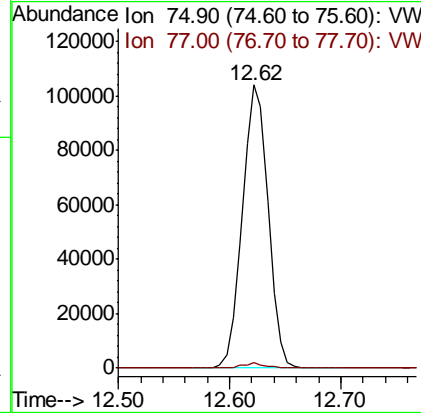
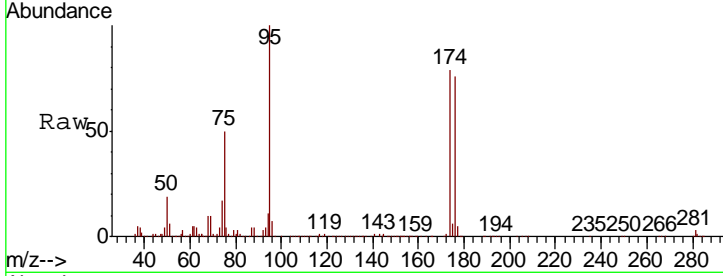




#76
 1,2,3-Trichloropropane
 Concen: 43.003 ug/l
 RT: 12.62 min Scan# 1810
 Delta R.T. -0.15 min
 Lab File: VW004620.D
 Acq: 11 Aug 2018 02:51

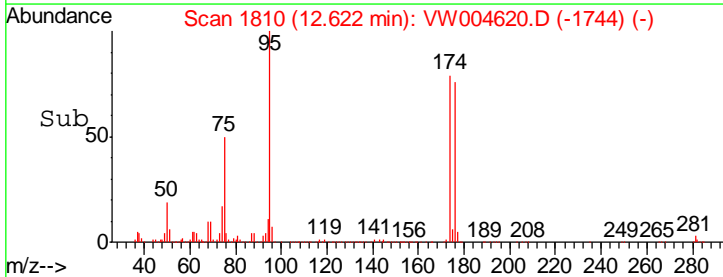
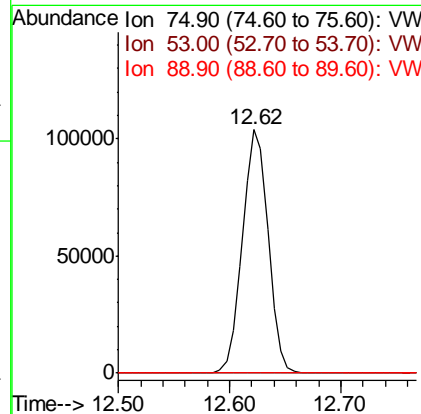
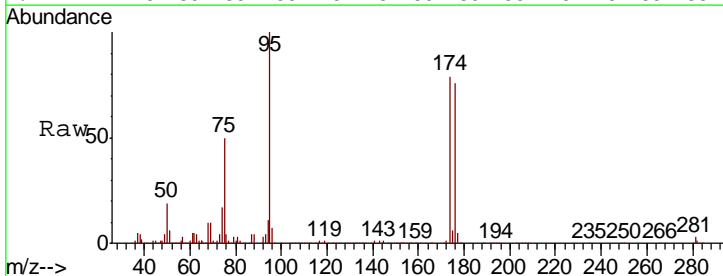
Instrument : MSVOA_W
 ClientSampled : JC-03-080918-C

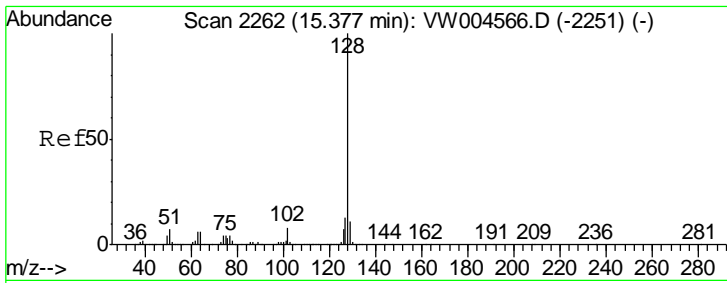
Tgt Ion	Resp	Lower	Upper
75	100		
77	1.7	0.0	0.0#



#81
 trans-1,4-Dichloro-2-butene
 Concen: 102.944 ug/l
 RT: 12.62 min Scan# 1810
 Delta R.T. 0.10 min
 Lab File: VW004620.D
 Acq: 11 Aug 2018 02:51

Tgt Ion	Resp	Lower	Upper
75	100		
53	0.3	74.4	111.6#
89	0.0	35.9	53.9#





#95
 Naphthalene
 Concen: 6.135 ug/l
 RT: 15.38 min Scan# 2262
 Delta R.T. 0.00 min
 Lab File: VW004620.D
 Acq: 11 Aug 2018 02:51

Instrument :
 MSVOA_W
 ClientSampled :
 JC-03-080918-C

Tgt Ion:128 Resp: 57084

Ion	Ratio	Lower	Upper
128	100		
127	13.8	10.3	15.5
129	12.2	8.6	13.0

