

Data Path : Z:\VOASRV\HPCHEM1\MSVOA W\DATA\VW081419\
 Data File : VW011912.D
 Acq On : 14 Aug 2019 11:36
 Operator : SY/VA
 Sample : K4215-22
 Misc : 5.78G/10ML/MSVOA W/SOIL
 ALS Vial : 1 Sample Multiplier: 1

Instrument :
 MSVOA_W
 ClientSampled :
 ETOC6

Integration Parameters: LSCINT.P

Integrator: RTE
 Smoothing : OFF
 Sampling : 1
 Start Thrs: 0.2
 Stop Thrs : 0

Filtering: 5
 Min Area: 0 % of largest Peak
 Max Peaks: 100
 Peak Location: TOP

If leading or trailing edge < 100 prefer < Baseline drop else tangent >
 Peak separation: 5

Method : Z:\VOASRV\HPCHEM1\MSVOA_W\METHOD\SOM2WLM073019S.M
 Title : VOC Analysis

Signal : TIC

peak #	R.T. min	first scan	max scan	last scan	PK TY	peak height	corr. area	corr. % max.	% of total
1	2.154	35	41	49	rBV3	14949	30629	2.85%	0.390%
2	2.349	67	73	82	rBV	71572	125807	11.71%	1.602%
3	2.891	155	162	176	rVB	48565	119136	11.09%	1.517%
4	3.263	221	223	225	rBV2	674	692	0.06%	0.009%
5	3.385	239	243	247	rVB5	623	920	0.09%	0.012%
6	3.531	264	267	268	rBV2	526	613	0.06%	0.008%
7	3.684	286	292	299	rVB2	4795	9409	0.88%	0.120%
8	3.854	314	320	325	rBV4	1774	4206	0.39%	0.054%
9	4.019	335	347	361	rBV2	118741	374032	34.82%	4.762%
10	4.330	396	398	402	rBV4	603	640	0.06%	0.008%
11	4.440	409	416	418	rVV5	1210	3035	0.28%	0.039%
12	4.464	418	420	424	rVV4	963	1401	0.13%	0.018%
13	4.921	481	495	511	rBV3	17910	66559	6.20%	0.847%
14	5.074	516	520	521	rBV2	397	566	0.05%	0.007%
15	5.208	540	542	547	rVB3	524	756	0.07%	0.010%
16	5.287	551	555	558	rBV3	736	749	0.07%	0.010%
17	5.763	630	633	635	rBV	832	694	0.06%	0.009%
18	5.939	652	662	672	rBV2	9977	29546	2.75%	0.376%
19	6.061	680	682	685	rBV2	579	574	0.05%	0.007%
20	6.195	702	704	708	rBV2	544	840	0.08%	0.011%
21	6.256	710	714	717	rBV2	419	695	0.06%	0.009%
22	6.458	743	747	751	rVV3	549	992	0.09%	0.013%
23	6.988	829	834	837	rVB3	641	999	0.09%	0.013%
24	7.079	840	849	871	rBV	32009	102942	9.58%	1.311%
25	7.403	900	902	907	rBV2	465	702	0.07%	0.009%
26	7.457	907	911	915	rVB2	412	602	0.06%	0.008%
27	7.646	931	942	954	rBV	182235	451247	42.01%	5.746%
28	7.866	972	978	979	rBV4	1126	1795	0.17%	0.023%
29	7.945	989	991	996	rVB3	737	945	0.09%	0.012%
30	8.171	1024	1028	1029	rBV2	513	670	0.06%	0.009%
31	8.274	1034	1045	1061	rBV2	365743	1074094	100.00%	13.676%
32	8.573	1093	1094	1098	rBV4	611	635	0.06%	0.008%
33	8.634	1102	1104	1108	rVB3	1233	1583	0.15%	0.020%
34	8.683	1108	1112	1114	rBV4	1113	1734	0.16%	0.022%

Data Path : Z:\VOASRV\HPCHEM1\MSVOA W\DATA\VW081419\
 Data File : VW011912.D
 Acq On : 14 Aug 2019 11:36
 Operator : SY/VA
 Sample : K4215-22
 Misc : 5.78G/10ML/MSVOA W/SOIL
 ALS Vial : 1 Sample Multiplier: 1

Instrument :
 MSVOA_W
 ClientSampleId :
 ETOC6

Integration Parameters: LSCINT.P

Integrator: RTE
 Smoothing : OFF
 Sampling : 1
 Start Thrs: 0.2
 Stop Thrs : 0

Filtering: 5
 Min Area: 0 % of largest Peak
 Max Peaks: 100
 Peak Location: TOP

If leading or trailing edge < 100 prefer < Baseline drop else tangent >
 Peak separation: 5

Method : Z:\VOASRV\HPCHEM1\MSVOA_W\METHOD\SOM2WLM073019S.M
 Title : VOC Analysis

35	8.841	1129	1138	1150	rBV	444750	886514	82.54%	11.288%
36	9.079	1171	1177	1181	rBV6	1370	3046	0.28%	0.039%
37	9.146	1186	1188	1191	rVB	778	611	0.06%	0.008%
38	9.274	1200	1209	1220	rBV	261857	529590	49.31%	6.743%
39	9.427	1232	1234	1236	rVB2	605	584	0.05%	0.007%
40	9.469	1239	1241	1245	rBV3	578	878	0.08%	0.011%
41	9.652	1267	1271	1280	rBV6	1627	3962	0.37%	0.050%
42	9.805	1291	1296	1297	rBV3	520	838	0.08%	0.011%
43	10.036	1325	1334	1342	rBV	128082	231234	21.53%	2.944%
44	10.323	1372	1381	1388	rBV	475659	829689	77.25%	10.564%
45	10.475	1403	1406	1409	rBV4	595	914	0.09%	0.012%
46	10.506	1409	1411	1415	rVB4	1122	1268	0.12%	0.016%
47	10.579	1415	1423	1436	rBV	77068	139726	13.01%	1.779%
48	10.707	1436	1444	1451	rBV	13872	23692	2.21%	0.302%
49	10.865	1462	1470	1473	rVB7	1674	3768	0.35%	0.048%
50	10.926	1473	1480	1496	rBV	115179	198161	18.45%	2.523%
51	11.073	1500	1504	1508	rVB4	1555	2417	0.23%	0.031%
52	11.170	1519	1520	1525	rBV4	490	581	0.05%	0.007%
53	11.408	1557	1559	1562	rVB4	741	774	0.07%	0.010%
54	11.524	1570	1578	1579	rBV5	1012	2015	0.19%	0.026%
55	11.536	1579	1580	1582	rBV2	571	563	0.05%	0.007%
56	11.634	1588	1596	1607	rBV	546088	943267	87.82%	12.010%
57	11.841	1622	1630	1639	rBV4	6095	13059	1.22%	0.166%
58	12.127	1675	1677	1679	rBV2	719	919	0.09%	0.012%
59	12.176	1679	1685	1691	rVB6	5009	11532	1.07%	0.147%
60	12.255	1694	1698	1701	rVB4	693	1094	0.10%	0.014%
61	12.335	1707	1711	1712	rBV4	901	972	0.09%	0.012%
62	12.469	1728	1733	1738	rBV5	2615	4729	0.44%	0.060%
63	12.542	1741	1745	1747	rBV4	470	747	0.07%	0.010%
64	12.609	1750	1756	1762	rVB2	17054	26958	2.51%	0.343%
65	12.694	1762	1770	1777	rBV	155158	255590	23.80%	3.254%
66	12.761	1778	1781	1786	rVB4	2160	2940	0.27%	0.037%
67	12.865	1795	1798	1799	rBV3	927	809	0.08%	0.010%
68	12.889	1799	1802	1803	rVV2	796	775	0.07%	0.010%
69	12.932	1805	1809	1814	rVV7	1744	3727	0.35%	0.047%
70	13.121	1836	1840	1842	rVB3	1052	1418	0.13%	0.018%
71	13.194	1849	1852	1856	rVB5	737	696	0.06%	0.009%

Data Path : Z:\VOASRV\HPCHEM1\MSVOA W\DATA\VW081419\
 Data File : VW011912.D
 Acq On : 14 Aug 2019 11:36
 Operator : SY/VA
 Sample : K4215-22
 Misc : 5.78G/10ML/MSVOA W/SOIL
 ALS Vial : 1 Sample Multiplier: 1

Instrument :
 MSVOA_W
 ClientSampleId :
 ETOC6

Integration Parameters: LSCINT.P

Integrator: RTE
 Smoothing : OFF
 Sampling : 1
 Start Thrs: 0.2
 Stop Thrs : 0

Filtering: 5
 Min Area: 0 % of largest Peak
 Max Peaks: 100
 Peak Location: TOP

If leading or trailing edge < 100 prefer < Baseline drop else tangent >
 Peak separation: 5

Method : Z:\VOASRV\HPCHEM1\MSVOA_W\METHOD\SOM2WLM073019S.M
 Title : VOC Analysis

72	13.255	1856	1862	1867	rBV5	2213	4754	0.44%	0.061%
73	13.298	1867	1869	1877	rVB6	1614	2972	0.28%	0.038%
74	13.371	1878	1881	1883	rBV3	625	750	0.07%	0.010%
75	13.408	1885	1887	1890	rVB3	1007	965	0.09%	0.012%
76	13.475	1894	1898	1900	rBV3	1810	2452	0.23%	0.031%
77	13.560	1904	1912	1924	rBV	446197	723725	67.38%	9.215%
78	13.761	1941	1945	1949	rBV5	1149	1422	0.13%	0.018%
79	13.853	1953	1960	1968	rBV	324707	528621	49.22%	6.731%
80	14.036	1986	1990	1991	rVV4	895	1153	0.11%	0.015%
81	14.072	1991	1996	2002	rVB2	12465	18469	1.72%	0.235%
82	14.328	2034	2038	2042	rVV5	1455	2328	0.22%	0.030%
83	14.395	2046	2049	2053	rVB4	545	831	0.08%	0.011%
84	14.487	2062	2064	2066	rBV3	573	643	0.06%	0.008%
85	14.627	2084	2087	2092	rVV5	1001	1620	0.15%	0.021%
86	14.694	2096	2098	2102	rVV3	500	614	0.06%	0.008%
87	15.005	2148	2149	2153	rVB3	527	597	0.06%	0.008%
88	15.048	2153	2156	2158	rVB3	651	683	0.06%	0.009%
89	15.133	2167	2170	2174	rVV6	520	758	0.07%	0.010%
90	15.310	2197	2199	2202	rVB3	552	586	0.05%	0.007%
91	15.444	2211	2221	2224	rVV4	4794	9121	0.85%	0.116%
92	15.493	2226	2229	2233	rVB3	2508	3939	0.37%	0.050%
93	15.566	2239	2241	2245	rVB4	1081	897	0.08%	0.011%
94	15.627	2249	2251	2253	rBV3	528	586	0.05%	0.007%
95	15.767	2272	2274	2276	rBV3	552	559	0.05%	0.007%
96	15.804	2276	2280	2281	rBV3	949	1094	0.10%	0.014%
97	16.182	2339	2342	2344	rBV4	471	588	0.05%	0.007%
98	16.584	2405	2408	2411	rBV4	437	652	0.06%	0.008%
99	16.748	2432	2435	2437	rVB4	891	1043	0.10%	0.013%
100	16.779	2437	2440	2441	rBV3	799	842	0.08%	0.011%

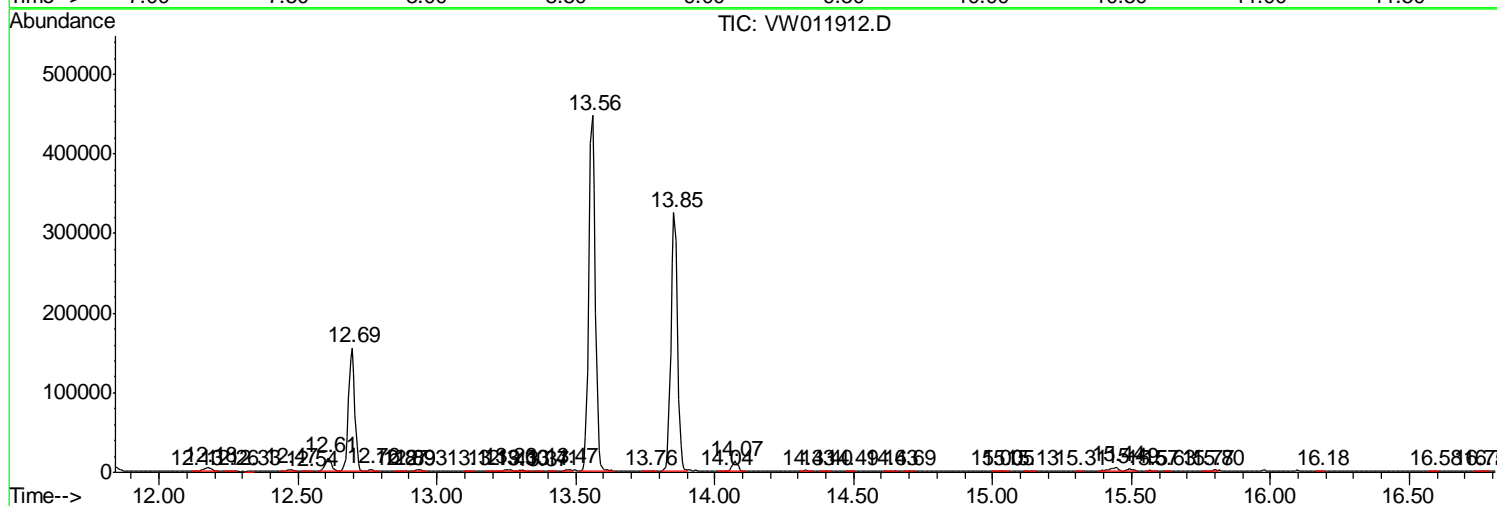
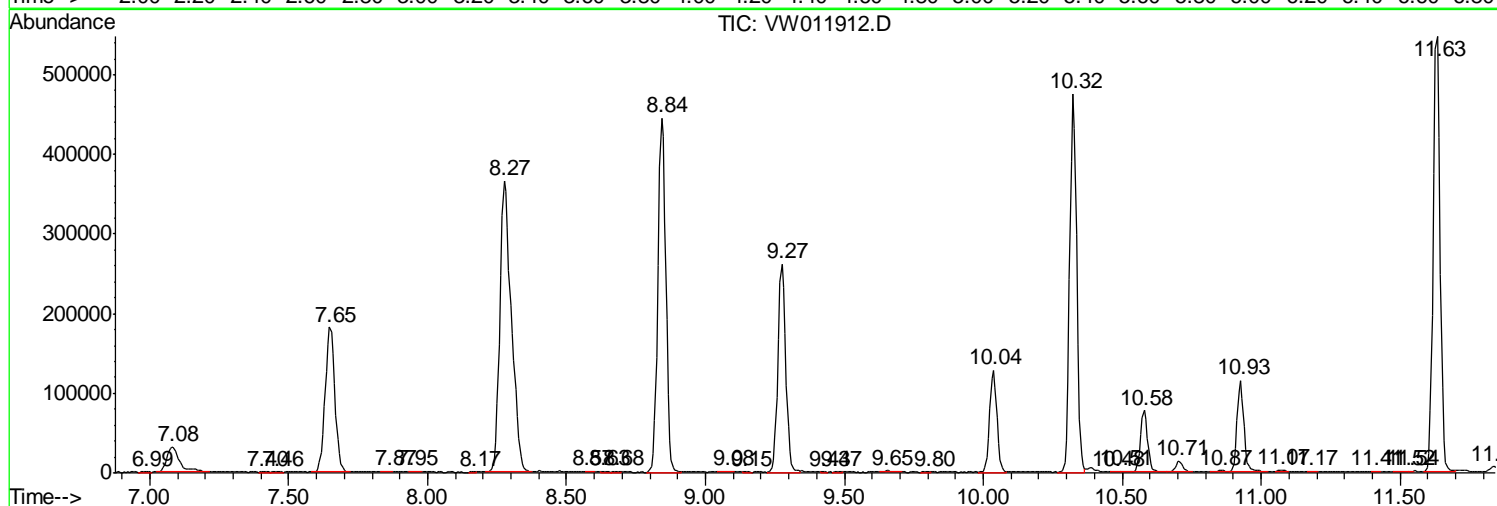
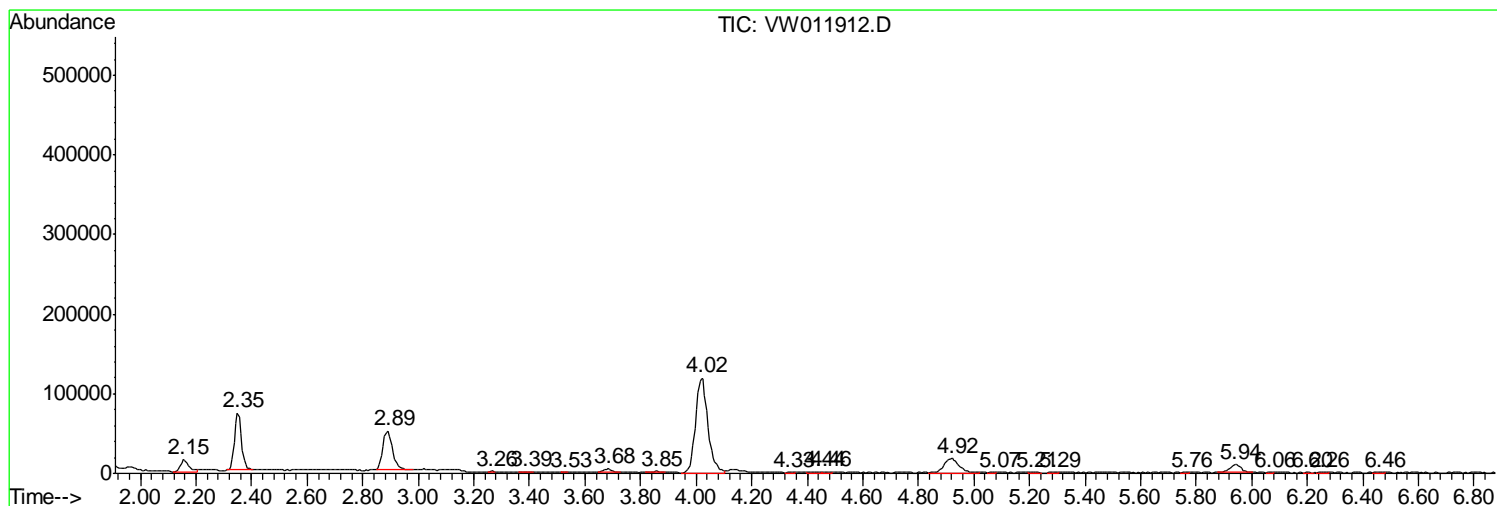
Sum of corrected areas: 7853760

Data Path : Z:\VOASRV\HPCHEM1\MSVOA W\DATA\VW081419\
 Data File : VW011912.D
 Acq On : 14 Aug 2019 11:36
 Operator : SY/VA
 Sample : K4215-22
 Misc : 5.78G/10ML/MSVOA W/SOIL
 ALS Vial : 1 Sample Multiplier: 1

Instrument :
 MSVOA_W
ClientSampled :
 ETOC6

Quant Method : Z:\VOASRV\HPCHEM1\MSVOA_W\METHOD\SOM2WLM073019S.M
 Quant Title : VOC Analysis

TIC Library : C:\DATABASE\NIST11.L
 TIC Integration Parameters: LSCINT.P



Data Path : Z:\VOASRV\HPCHEM1\MSVOA_W\DATA\VW081419\
Data File : VW011912.D
Acq On : 14 Aug 2019 11:36
Operator : SY/VA
Sample : K4215-22
Misc : 5.78G/10ML/MSVOA_W/SOIL
ALS Vial : 1 Sample Multiplier: 1

Instrument :
MSVOA_W
ClientSampleId :
ETOC6

Quant Method : Z:\VOASRV\HPCHEM1\MSVOA_W\METHOD\SOM2WLM073019S.M
Quant Title : VOC Analysis

TIC Library : C:\DATABASE\NIST11.L
TIC Integration Parameters: LSCINT.P

No Library Search Compounds Detected

Data Path : Z:\VOASRV\HPCHEM1\MSVOA_W\DATA\VW081419\
Data File : VW011912.D
Acq On : 14 Aug 2019 11:36
Operator : SY/VA
Sample : K4215-22
Misc : 5.78G/10ML/MSVOA_W/SOIL
ALS Vial : 1 Sample Multiplier: 1

Instrument :
MSVOA_W
ClientSampleId :
ETOC6

Quant Method : Z:\VOASRV\HPCHEM1\MSVOA_W\METHOD\SOM2WLM073019S.M
Quant Title : VOC Analysis

TIC Library : C:\DATABASE\NIST11.L
TIC Integration Parameters: LSCINT.P

TIC Top Hit name	RT	EstConc	Units	Response	--Internal Standard--			
					#	RT	Resp	Conc
