

Data Path : Z:\voasrv\HPCHEM1\MSVOA_W\Data\VW081621\
 Data File : VW019747.D
 Acq On : 16 Aug 2021 12:20
 Operator : SY/VA
 Sample : M3365-14RE
 Misc : 8.93g/10mL/MSVOA_W/SOIL
 ALS Vial : 7 Sample Multiplier: 1

Instrument :
 MSVOA_W
 ClientSampled :

Quant Time: Aug 17 01:53:05 2021
 Quant Method : Z:\voasrv\HPCHEM1\MSVOA_W\Method\SFAMWLM081121SMA.M
 Quant Title : SFAM01.0
 QLast Update : Tue Aug 17 01:50:39 2021
 Response via : Initial Calibration

Compound	R.T.	QIon	Response	Conc	Units	Dev(Min)

Internal Standards						
1) 1,4-Difluorobenzene	8.847	114	23697	25.000	ug/L	0.00
28) Chlorobenzene-d5	11.634	117	23007	25.000	ug/L	0.00
58) 1,4-Dichlorobenzene-d4	13.560	152	9652	25.000	ug/L	0.00
System Monitoring Compounds						
4) Vinyl Chloride-d3	2.355	65	8988	32.480	ug/L	0.00
Spiked Amount	25.000	Range 30 - 150	Recovery	=	129.920%	
7) Chloroethane-d5	2.891	69	10305	37.677	ug/L	0.00
Spiked Amount	25.000	Range 30 - 150	Recovery	=	150.720%#	
11) 1,1-Dichloroethene-d2	4.031	63	10422	18.304	ug/L	0.00
Spiked Amount	25.000	Range 45 - 110	Recovery	=	73.200%	
21) 2-Butanone-d5	7.092	46	5408	59.842	ug/L	0.01
Spiked Amount	50.000	Range 20 - 135	Recovery	=	119.680%	
24) Chloroform-d	7.653	84	19930	27.819	ug/L	0.00
Spiked Amount	25.000	Range 40 - 150	Recovery	=	111.280%	
26) 1,2-Dichloroethane-d4	8.311	65	11226	26.917	ug/L	0.00
Spiked Amount	25.000	Range 70 - 130	Recovery	=	107.680%	
32) Benzene-d6	8.281	84	31434	20.635	ug/L	0.00
Spiked Amount	25.000	Range 20 - 135	Recovery	=	82.560%	
36) 1,2-Dichloropropane-d6	9.274	67	11201	24.442	ug/L	0.00
Spiked Amount	25.000	Range 70 - 120	Recovery	=	97.760%	
41) Toluene-d8	10.329	98	22878	16.464	ug/L	0.00
Spiked Amount	25.000	Range 30 - 130	Recovery	=	65.840%	
43) trans-1,3-Dichloroprop...	10.579	79	3895	20.585	ug/L	0.00
Spiked Amount	25.000	Range 30 - 135	Recovery	=	82.320%	
47) 2-Hexanone-d5	10.926	63	3014	37.490	ug/L	0.00
Spiked Amount	50.000	Range 20 - 135	Recovery	=	74.980%	
56) 1,1,2,2-Tetrachloroeth...	12.694	84	10397	26.147	ug/L	0.00
Spiked Amount	25.000	Range 45 - 120	Recovery	=	104.600%	
66) 1,2-Dichlorobenzene-d4	13.853	152	9266	26.029	ug/L	0.00
Spiked Amount	25.000	Range 75 - 120	Recovery	=	104.120%	

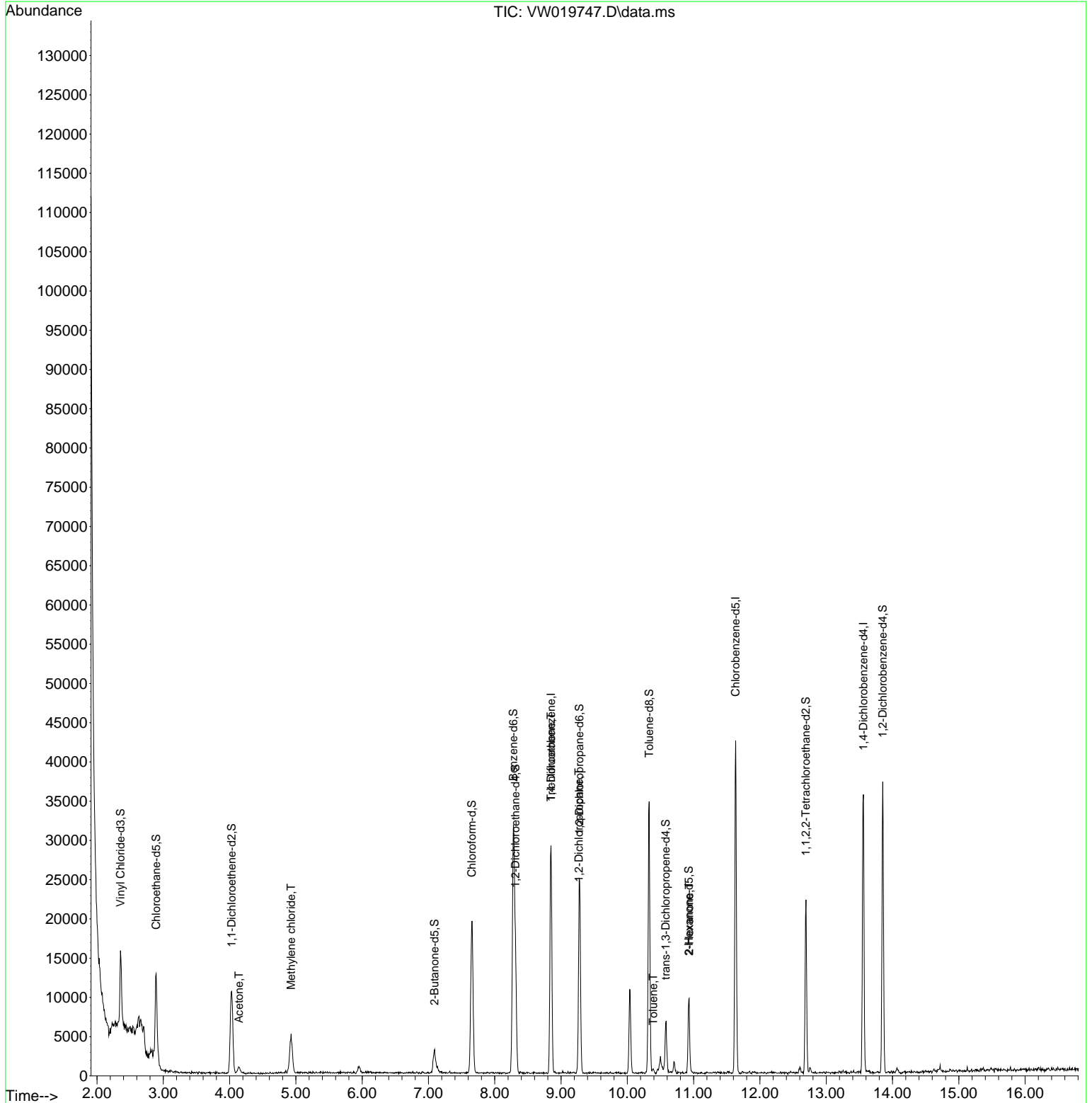
Target Compounds						Qvalue
13) Acetone	4.141	43	1587	21.364	ug/L	96
16) Methylene chloride	4.927	84	3580	9.040	ug/L	84
34) Trichloroethene	8.847	95	668	1.690	ug/L #	5
37) 1,2-Dichloropropane	9.268	63	730	1.832	ug/L #	85
42) Toluene	10.390	91	510	0.305	ug/L	95
48) 2-Hexanone	10.932	43	408	2.422	ug/L #	63

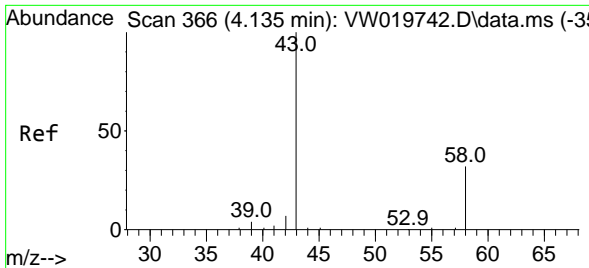
(#) = qualifier out of range (m) = manual integration (+) = signals summed

Data Path : Z:\voasrv\HPCHEM1\MSVOA_W\Data\VW081621\
 Data File : VW019747.D
 Acq On : 16 Aug 2021 12:20
 Operator : SY/VA
 Sample : M3365-14RE
 Misc : 8.93g/10mL/MSVOA_W/SOIL
 ALS Vial : 7 Sample Multiplier: 1

Instrument :
 MSVOA_W
 ClientSampled :

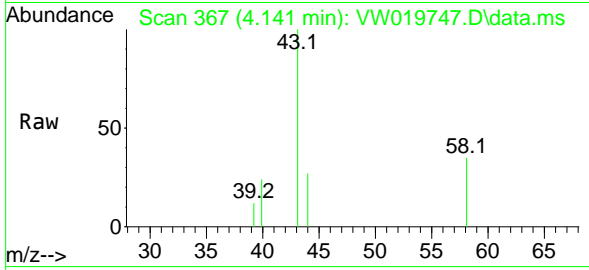
Quant Time: Aug 17 01:53:05 2021
 Quant Method : Z:\voasrv\HPCHEM1\MSVOA_W\Method\SFAMWLM081121SMA.M
 Quant Title : SFAM01.0
 QLast Update : Tue Aug 17 01:50:39 2021
 Response via : Initial Calibration



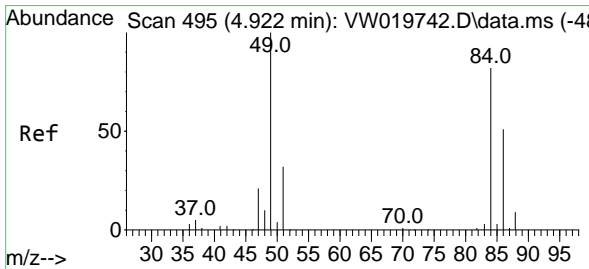
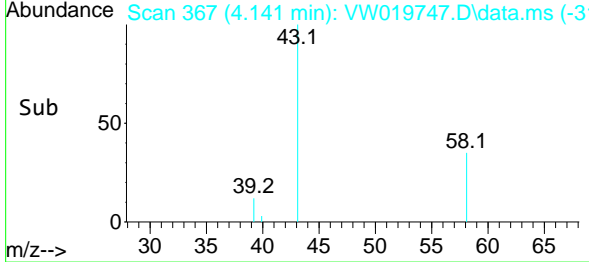
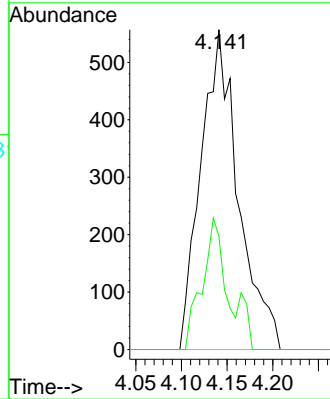


#13
 Acetone
 Concen: 21.364 ug/L
 RT: 4.141 min Scan# 367
 Delta R.T. 0.006 min
 Lab File: VW019747.D
 Acq: 16 Aug 2021 12:20

Instrument :
 MSVOA_W
 ClientSampled :

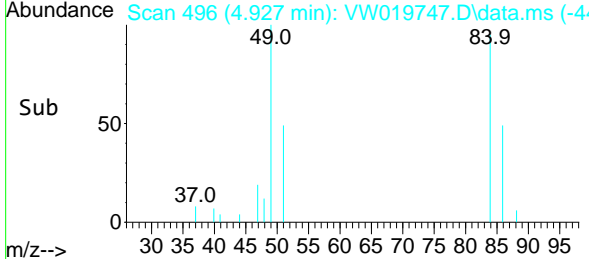
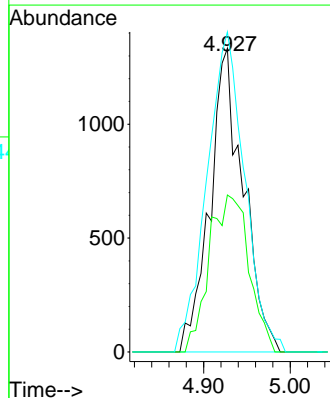
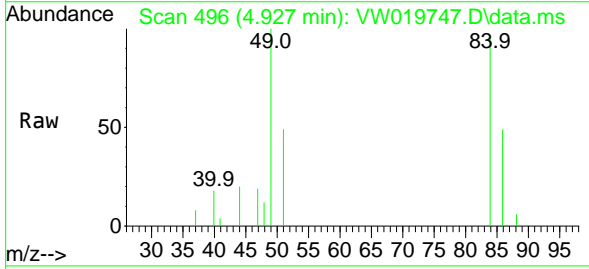


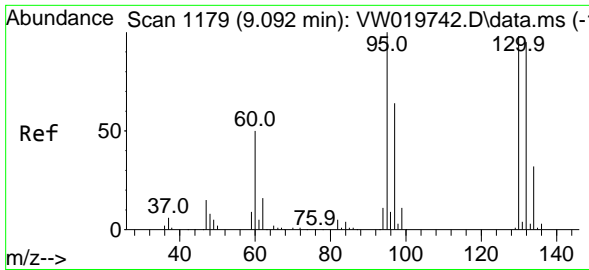
Tgt Ion: 43 Resp: 1587
 Ion Ratio Lower Upper
 43 100
 58 25.0 0.0 53.8



#16
 Methylene chloride
 Concen: 9.040 ug/L
 RT: 4.927 min Scan# 496
 Delta R.T. 0.006 min
 Lab File: VW019747.D
 Acq: 16 Aug 2021 12:20

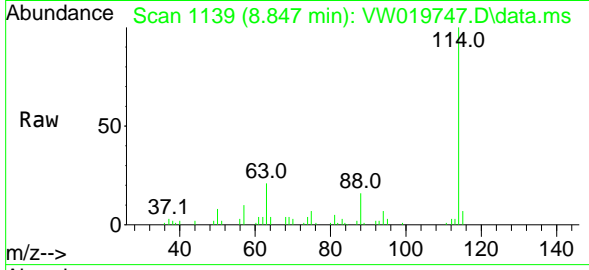
Tgt Ion: 84 Resp: 3580
 Ion Ratio Lower Upper
 84 100
 86 51.7 45.3 84.1
 49 105.4 86.6 160.8



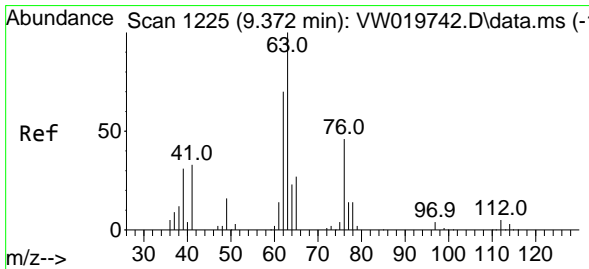
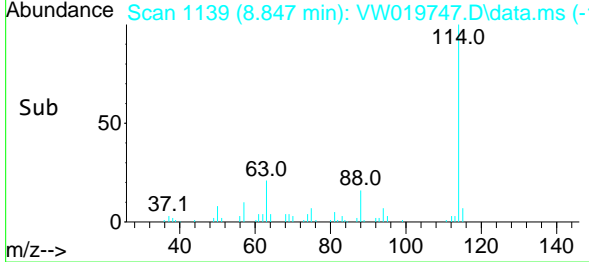
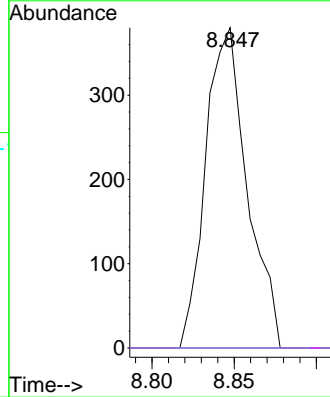


#34
 Trichloroethene
 Concen: 1.690 ug/L
 RT: 8.847 min Scan# 1139
 Delta R.T. -0.244 min
 Lab File: VW019747.D
 Acq: 16 Aug 2021 12:20

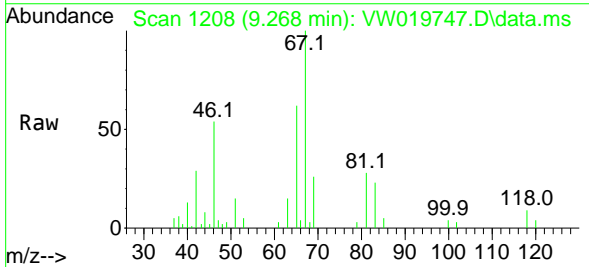
Instrument :
 MSVOA_W
 ClientSampled :



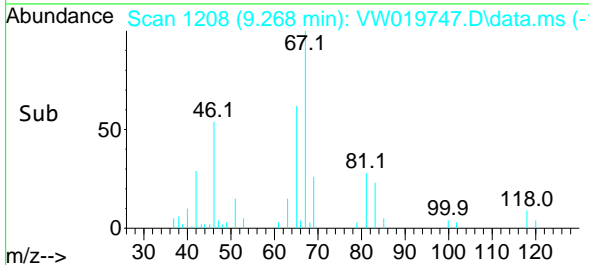
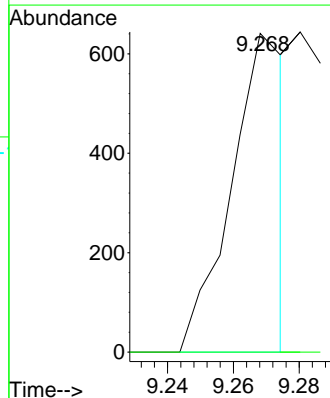
Tgt Ion: 95 Resp: 668
 Ion Ratio Lower Upper
 95 100
 97 0.0 47.3 87.8#
 132 0.0 71.0 131.8#
 130 0.0 65.1 120.9#

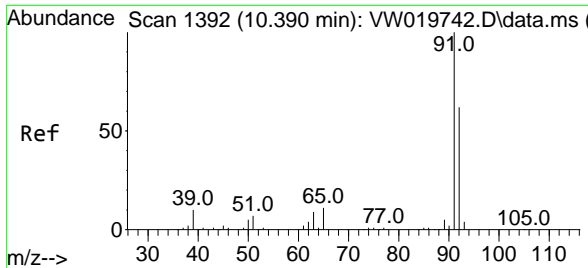


#37
 1,2-Dichloropropane
 Concen: 1.832 ug/L
 RT: 9.268 min Scan# 1208
 Delta R.T. -0.104 min
 Lab File: VW019747.D
 Acq: 16 Aug 2021 12:20



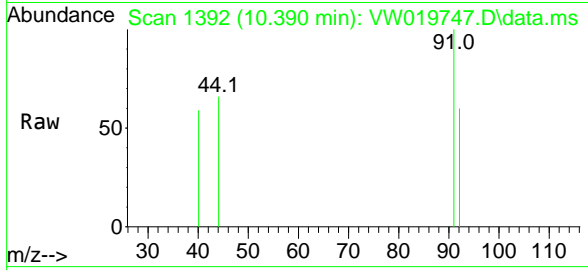
Tgt Ion: 63 Resp: 730
 Ion Ratio Lower Upper
 63 100
 112 0.0 3.9 5.9#



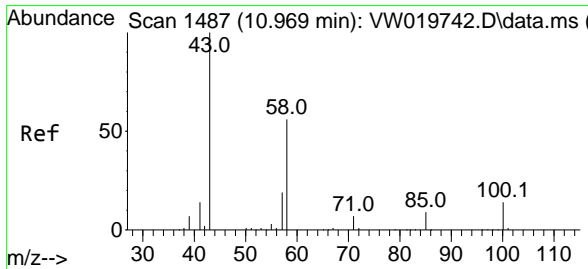
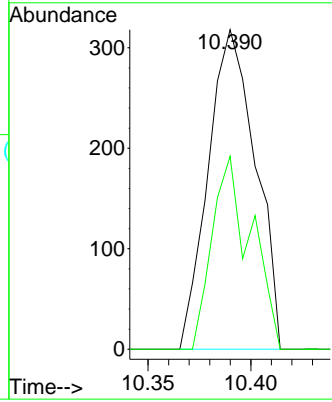
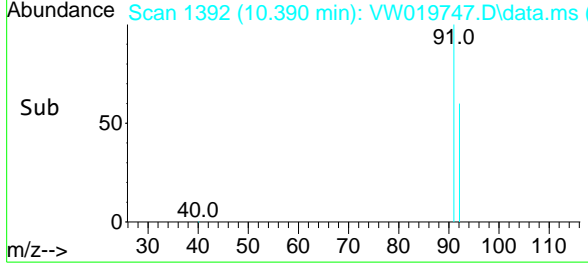


#42
 Toluene
 Concen: 0.305 ug/L
 RT: 10.390 min Scan# 1392
 Delta R.T. -0.000 min
 Lab File: VW019747.D
 Acq: 16 Aug 2021 12:20

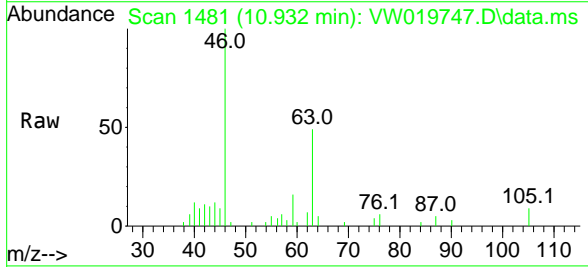
Instrument :
 MSVOA_W
 ClientSampled :



Tgt Ion: 91 Resp: 510
 Ion Ratio Lower Upper
 91 100
 92 60.4 39.5 73.3



#48
 2-Hexanone
 Concen: 2.422 ug/L
 RT: 10.932 min Scan# 1481
 Delta R.T. -0.037 min
 Lab File: VW019747.D
 Acq: 16 Aug 2021 12:20



Tgt Ion: 43 Resp: 408
 Ion Ratio Lower Upper
 43 100
 58 47.1 42.7 64.1
 57 73.3 15.8 23.8#
 100 0.0 10.0 15.0#

