

Data Path : Z:\VOASRV\HPCHEM1\MSVOA\_W\DATA\VW081719\  
 Data File : VW011968.D  
 Acq On : 16 Aug 2019 16:34  
 Operator : SY/VA  
 Sample : K4366-05  
 Misc : 5.73G/5ML/MSVOA\_W/SOIL  
 ALS Vial : 19 Sample Multiplier: 1

Instrument :  
 MSVOA\_W  
 ClientSampleId :  
 PX-5

Quant Time: Aug 17 05:00:31 2019  
 Quant Method : Z:\VOASRV\HPCHEM1\MSVOA\_W\METHOD\82W072719S.M  
 Quant Title : SW846 8260  
 QLast Update : Sat Jul 27 00:23:30 2019  
 Response via : Initial Calibration

Internal Standards	R.T.	QIon	Response	Conc	Units	Dev(Min)
1) Pentafluorobenzene	7.95	168	240149	50.00	ug/l	0.00
34) 1,4-Difluorobenzene	8.84	114	402359	50.00	ug/l	0.00
63) Chlorobenzene-d5	11.63	117	339753	50.00	ug/l	0.00
72) 1,4-Dichlorobenzene-d4	13.56	152	143349	50.00	ug/l	0.00

System Monitoring Compounds

33) 1,2-Dichloroethane-d4	8.31	65	156540	56.77	ug/l	0.00
Spiked Amount				50.000		
			Recovery	=	113.54%	
35) Dibromofluoromethane	7.88	113	120307	53.30	ug/l	0.00
Spiked Amount				50.000		
			Recovery	=	106.60%	
50) Toluene-d8	10.32	98	501953	54.31	ug/l	0.00
Spiked Amount				50.000		
			Recovery	=	108.62%	
62) 4-Bromofluorobenzene	12.62	95	185984	56.44	ug/l	0.00
Spiked Amount				50.000		
			Recovery	=	112.88%	

Target Compounds

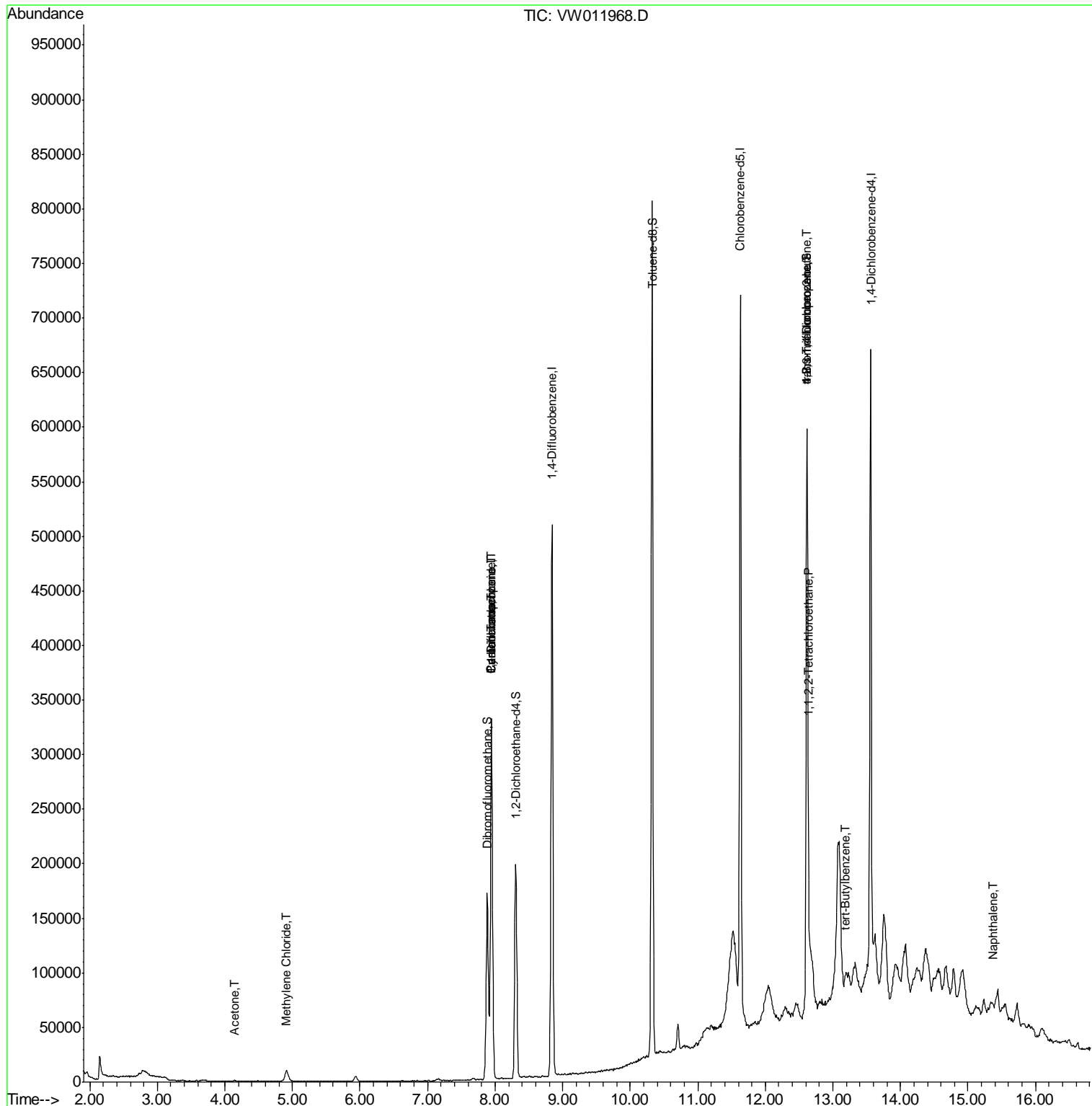
						Qvalue
11) Tert butyl alcohol	5.18	59	27	Below Cal	#	72
16) Acetone	4.14	43	1633	1.862	ug/l #	86
20) Methylene Chloride	4.91	84	6745	2.230	ug/l	93
31) Cyclohexane	7.95	56	5949	1.154	ug/l #	1
36) 1,1-Dichloropropene	7.95	75	20238	4.837	ug/l #	54
38) Carbon Tetrachloride	7.95	117	24553	6.855	ug/l #	16
75) 1,1,2,2-Tetrachloroethane	12.64	83	13501	6.712	ug/l #	26
76) 1,2,3-Trichloropropane	12.62	75	87403	57.623	ug/l #	100
81) trans-1,4-Dichloro-2-buten	12.62	75	87403	132.802	ug/l #	6
83) tert-Butylbenzene	13.18	119	8495	1.133	ug/l #	37
95) Naphthalene	15.37	128	381	2.130	ug/l #	1

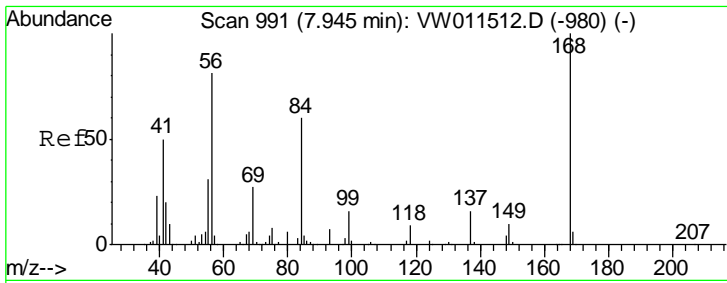
(#) = qualifier out of range (m) = manual integration (+) = signals summed

Data Path : Z:\VOASRV\HPCHEM1\MSVOA\_W\DATA\VW081719\  
 Data File : VW011968.D  
 Acq On : 16 Aug 2019 16:34  
 Operator : SY/VA  
 Sample : K4366-05  
 Misc : 5.73G/5ML/MSVOA\_W/SOIL  
 ALS Vial : 19 Sample Multiplier: 1

Instrument :  
 MSVOA\_W  
 ClientSampleId :  
 PX-5

Quant Time: Aug 17 05:00:31 2019  
 Quant Method : Z:\VOASRV\HPCHEM1\MSVOA\_W\METHOD\82W072719S.M  
 Quant Title : SW846 8260  
 QLast Update : Sat Jul 27 00:23:30 2019  
 Response via : Initial Calibration

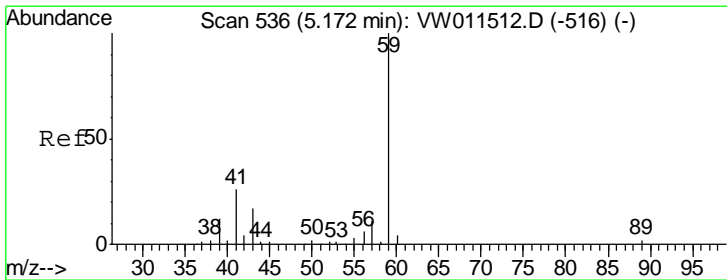
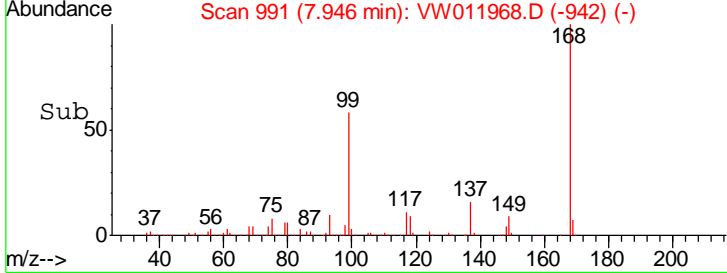
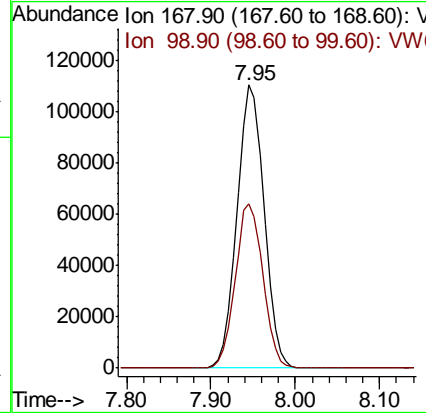
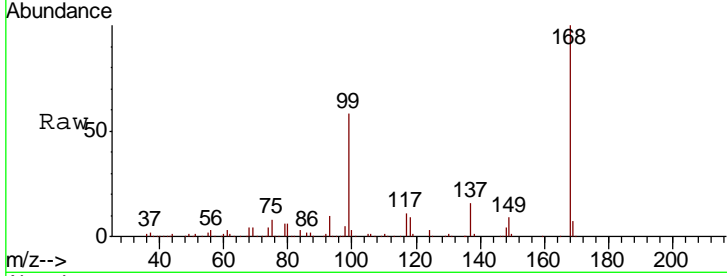




#1  
 Pentafluorobenzene  
 Concen: 50.000 ug/l  
 RT: 7.95 min Scan# 991  
 Delta R.T. 0.00 min  
 Lab File: VW011968.D  
 Acq: 16 Aug 2019 16:34

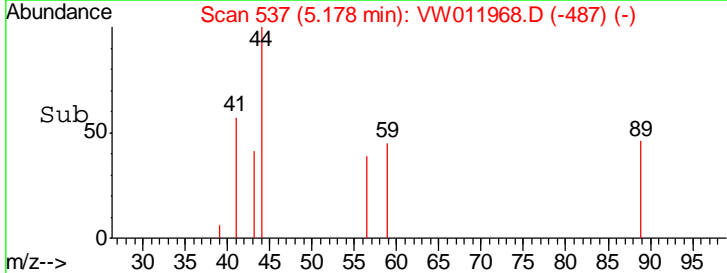
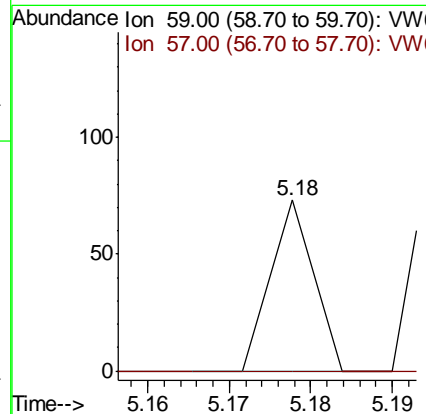
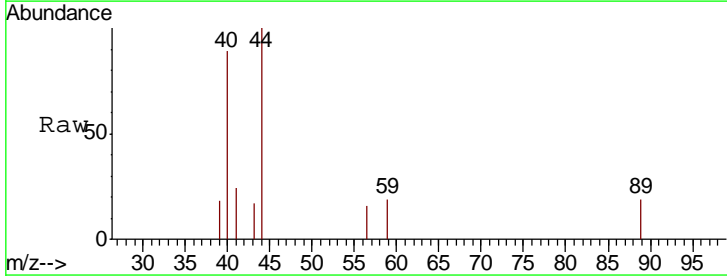
Instrument :  
 MSVOA\_W  
 ClientSampled :  
 PX-5

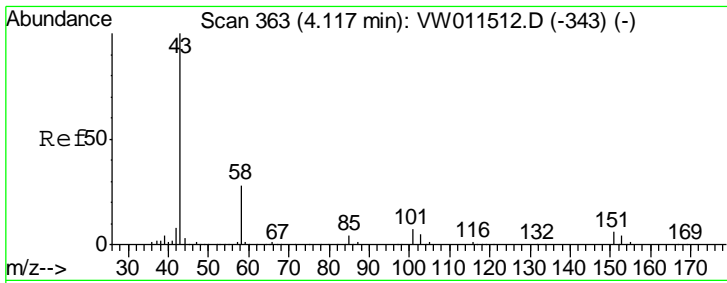
Tgt Ion	Resp	Lower	Upper
168	100		
99	58.1	48.2	72.4



#11  
 Tert butyl alcohol  
 Concen: Below Cal  
 RT: 5.18 min Scan# 537  
 Delta R.T. 0.01 min  
 Lab File: VW011968.D  
 Acq: 16 Aug 2019 16:34

Tgt Ion	Resp	Lower	Upper
59	100		
57	0.0	8.5	12.7#

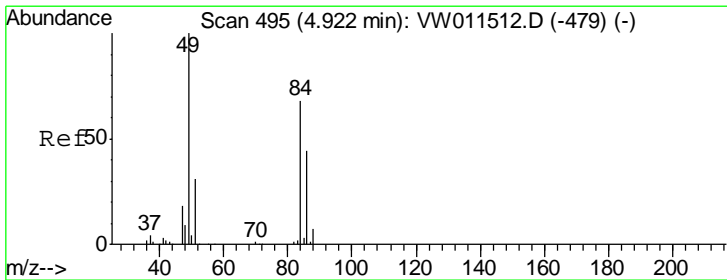
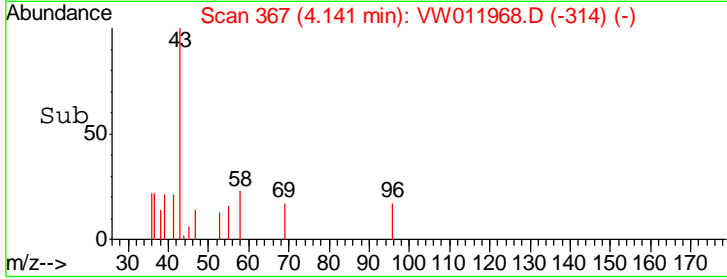
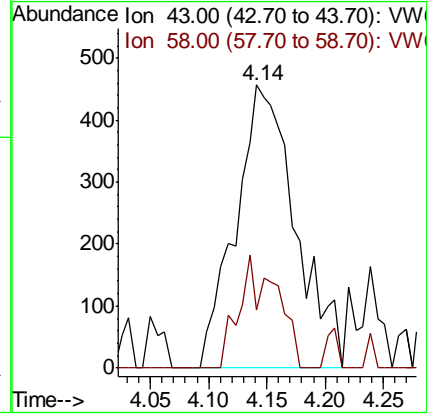
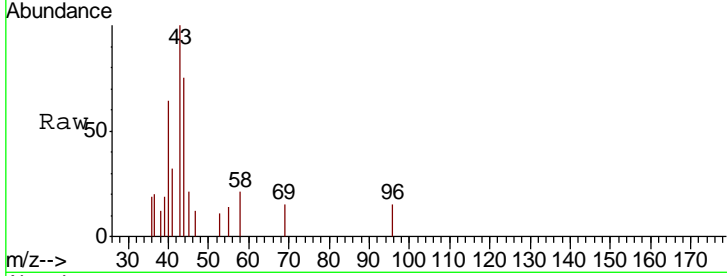




#16  
 Acetone  
 Concen: 1.862 ug/l  
 RT: 4.14 min Scan# 367  
 Delta R.T. 0.02 min  
 Lab File: VW011968.D  
 Acq: 16 Aug 2019 16:34

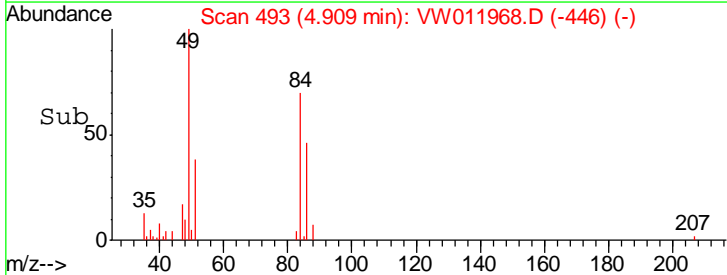
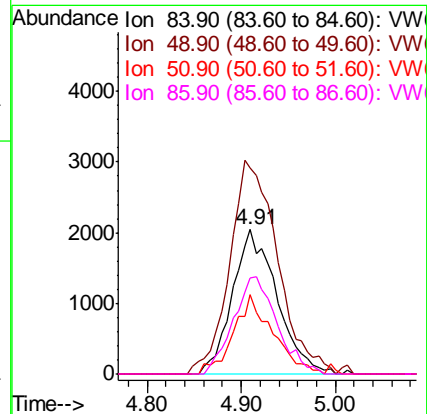
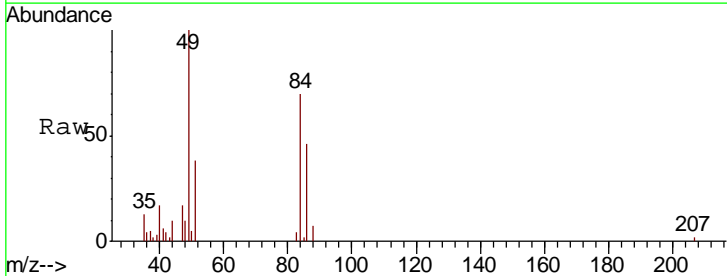
Instrument :  
 MSVOA\_W  
 ClientSampled :  
 PX-5

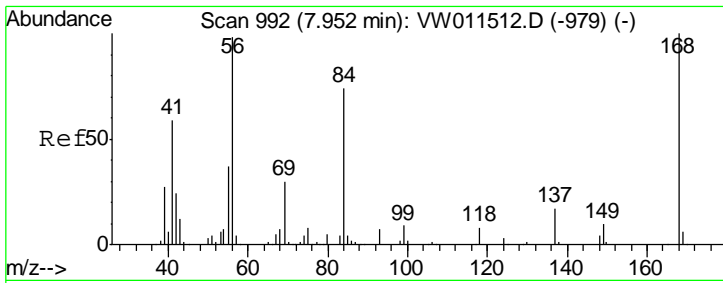
Tgt Ion: 43 Resp: 1633  
 Ion Ratio Lower Upper  
 43 100  
 58 20.6 22.3 33.5#



#20  
 Methylene Chloride  
 Concen: 2.230 ug/l  
 RT: 4.91 min Scan# 493  
 Delta R.T. -0.01 min  
 Lab File: VW011968.D  
 Acq: 16 Aug 2019 16:34

Tgt Ion: 84 Resp: 6745  
 Ion Ratio Lower Upper  
 84 100  
 49 138.5 117.8 176.6  
 51 54.7 37.0 55.4  
 86 66.2 51.8 77.8

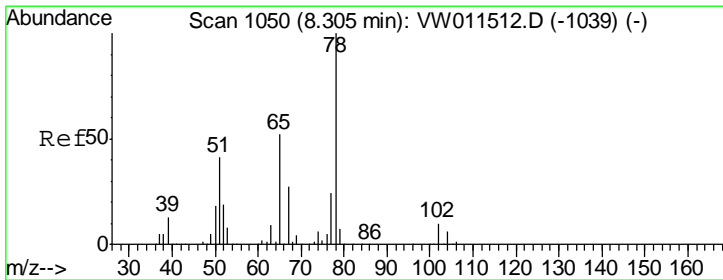
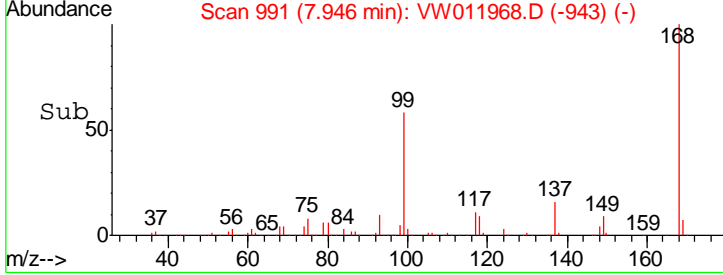
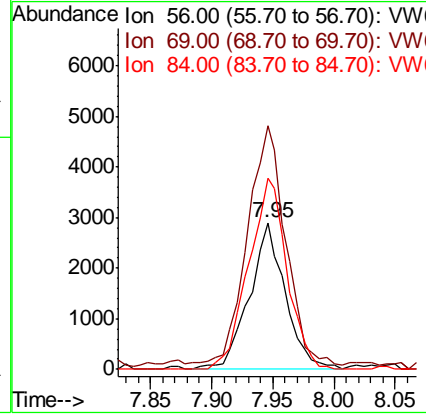
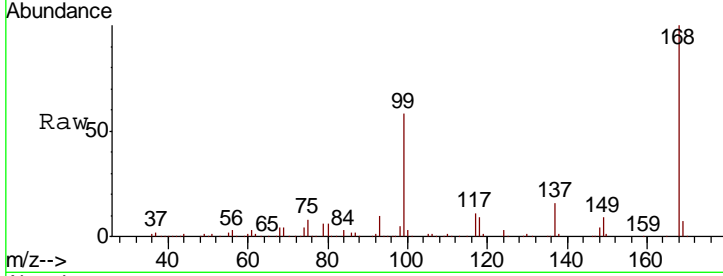




#31  
 Cyclohexane  
 Concen: 1.154 ug/l  
 RT: 7.95 min Scan# 991  
 Delta R.T. -0.01 min  
 Lab File: VW011968.D  
 Acq: 16 Aug 2019 16:34

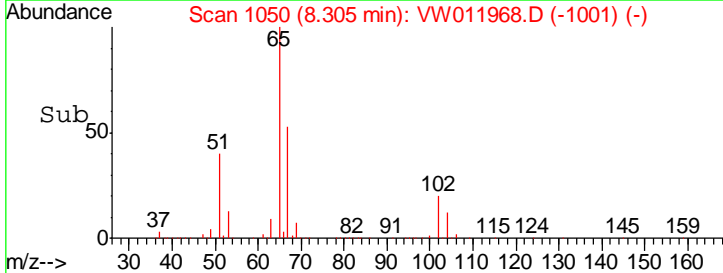
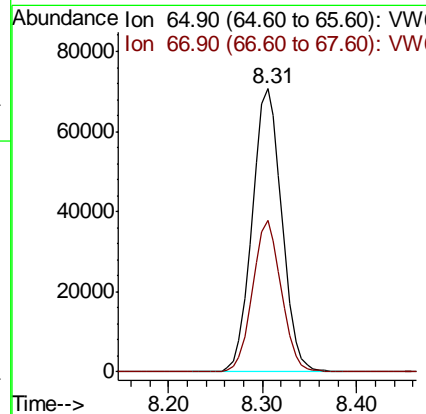
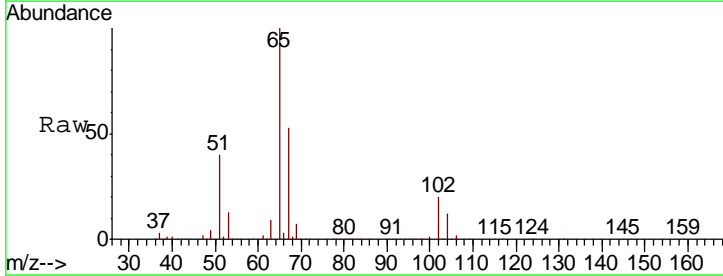
Instrument :  
 MSVOA\_W  
 ClientSampled :  
 PX-5

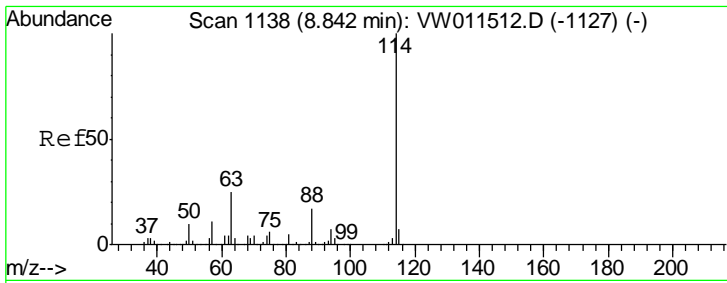
Tgt Ion	Resp	Lower	Upper
56	100		
69	163.1	24.3	36.5#
84	130.4	60.4	90.6#



#33  
 1,2-Dichloroethane-d4  
 Concen: 56.767 ug/l  
 RT: 8.31 min Scan# 1050  
 Delta R.T. 0.00 min  
 Lab File: VW011968.D  
 Acq: 16 Aug 2019 16:34

Tgt Ion	Resp	Lower	Upper
65	100		
67	51.6	0.0	105.2

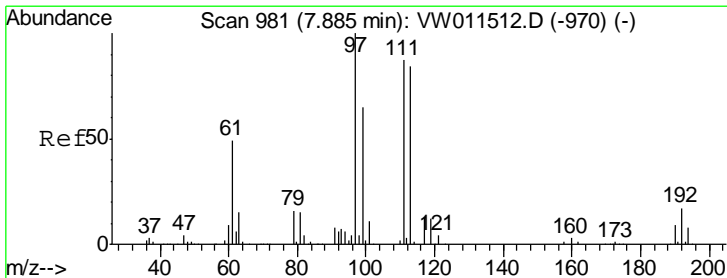
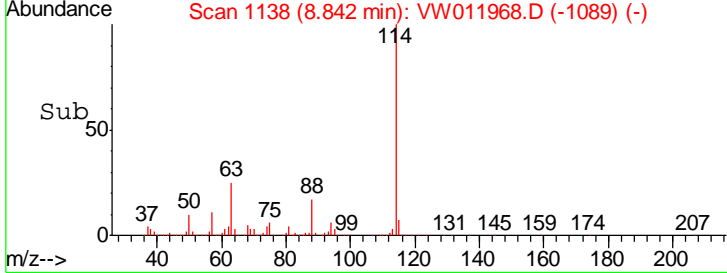
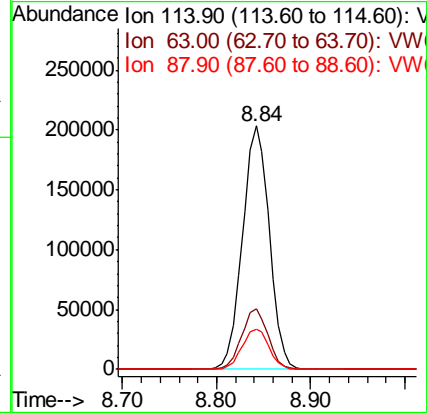
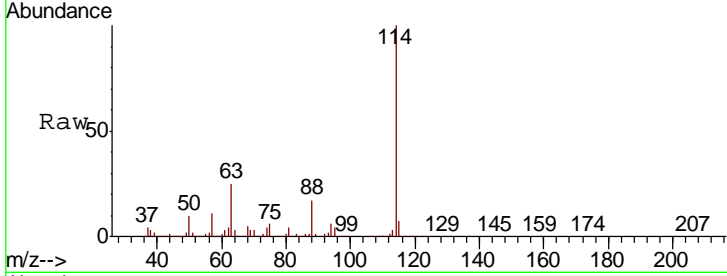




#34  
 1,4-Difluorobenzene  
 Concen: 50.000 ug/l  
 RT: 8.84 min Scan# 1138  
 Delta R.T. 0.00 min  
 Lab File: VW011968.D  
 Acq: 16 Aug 2019 16:34

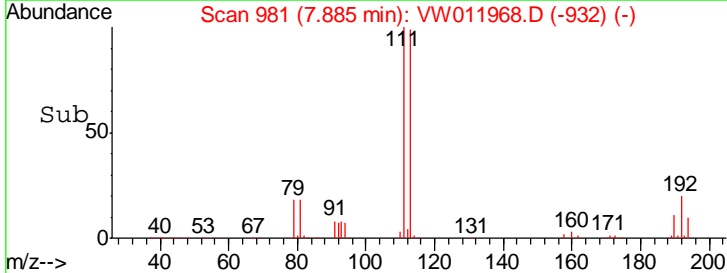
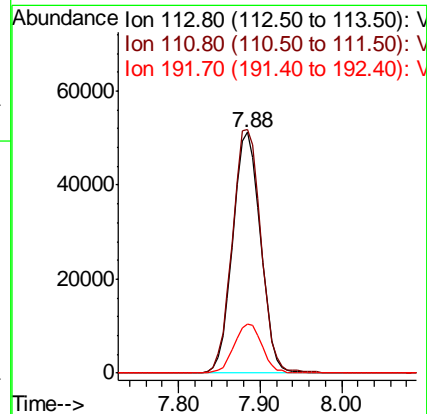
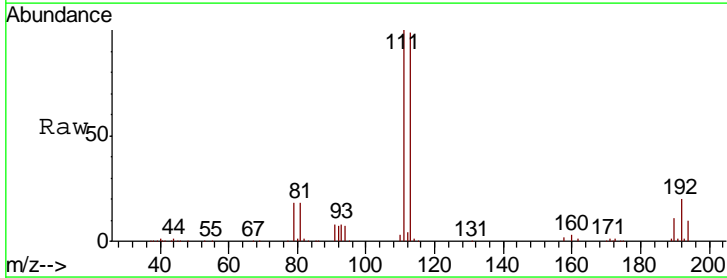
Instrument :  
 MSVOA\_W  
 ClientSampled :  
 PX-5

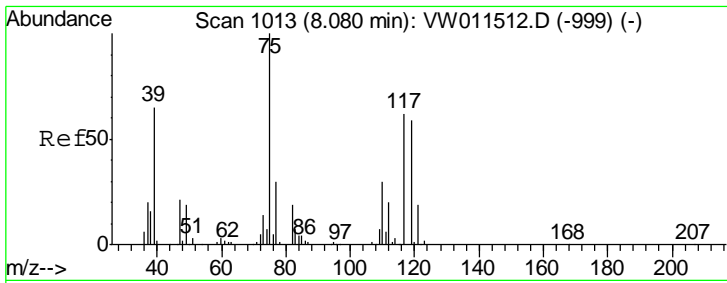
Tgt Ion	Resp	Lower	Upper
114	100		
63	24.8	0.0	49.2
88	16.5	0.0	33.8



#35  
 Dibromofluoromethane  
 Concen: 53.297 ug/l  
 RT: 7.88 min Scan# 981  
 Delta R.T. 0.00 min  
 Lab File: VW011968.D  
 Acq: 16 Aug 2019 16:34

Tgt Ion	Resp	Lower	Upper
113	100		
111	103.8	82.7	124.1
192	20.5	16.1	24.1

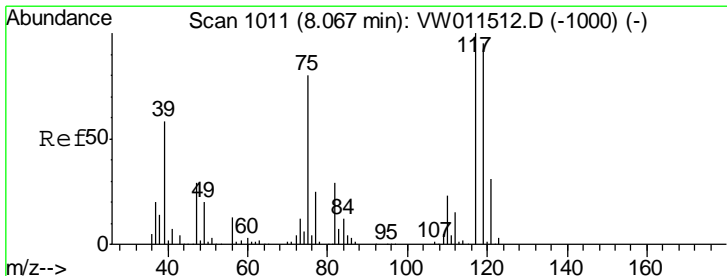
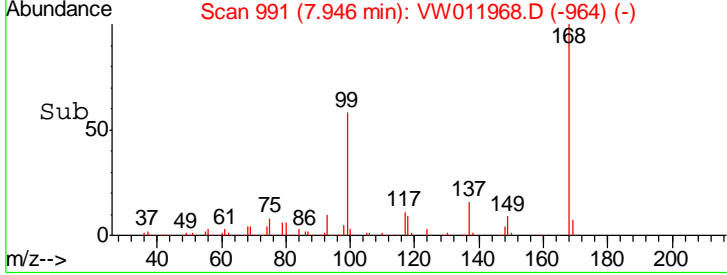
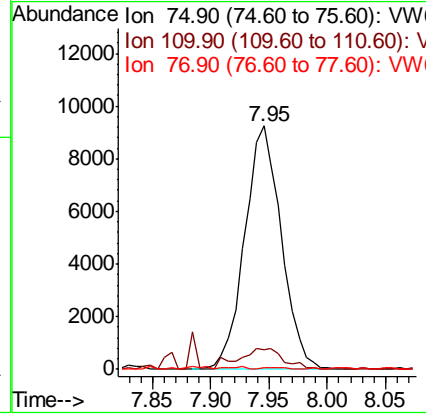
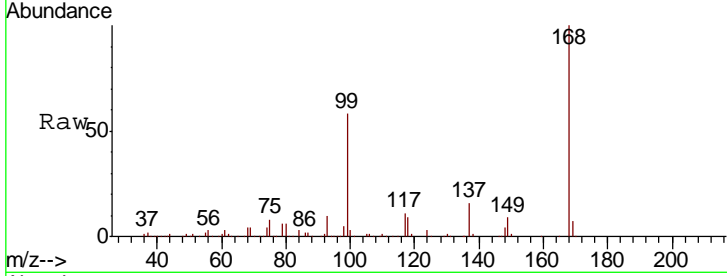




#36  
 1,1-Dichloropropene  
 Concen: 4.837 ug/l  
 RT: 7.95 min Scan# 991  
 Delta R.T. -0.13 min  
 Lab File: VW011968.D  
 Acq: 16 Aug 2019 16:34

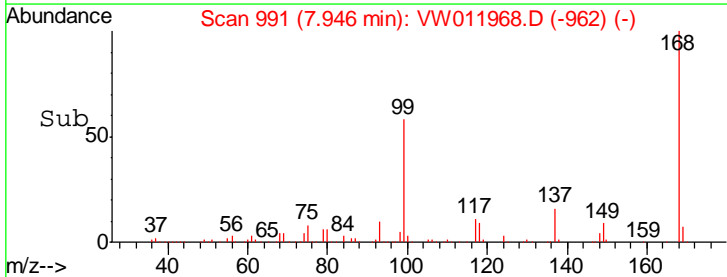
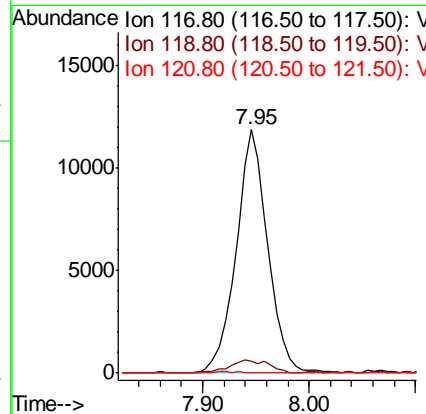
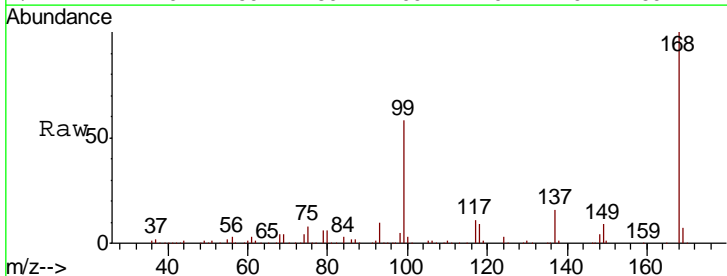
Instrument : MSVOA\_W  
 ClientSampled : PX-5

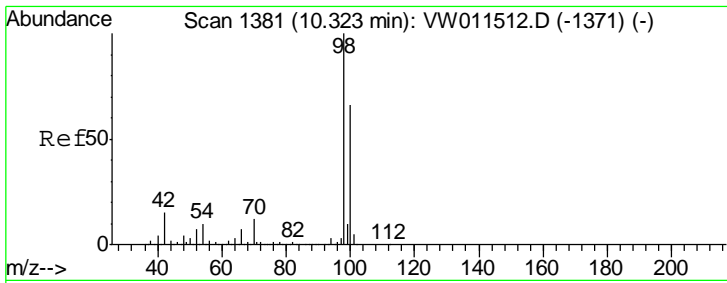
Tgt Ion	Resp	Lower	Upper
75	100		
110	10.6	15.6	46.8#
77	0.5	24.3	36.5#



#38  
 Carbon Tetrachloride  
 Concen: 6.855 ug/l  
 RT: 7.95 min Scan# 991  
 Delta R.T. -0.12 min  
 Lab File: VW011968.D  
 Acq: 16 Aug 2019 16:34

Tgt Ion	Resp	Lower	Upper
117	100		
119	5.1	75.8	113.6#
121	0.0	24.7	37.1#

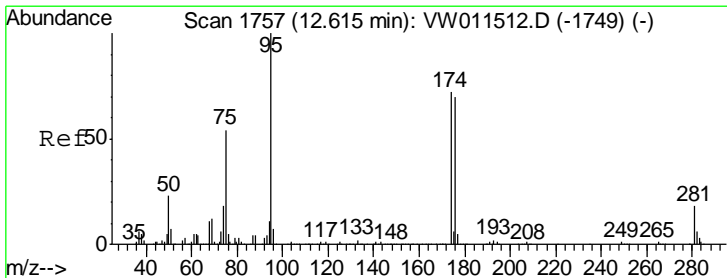
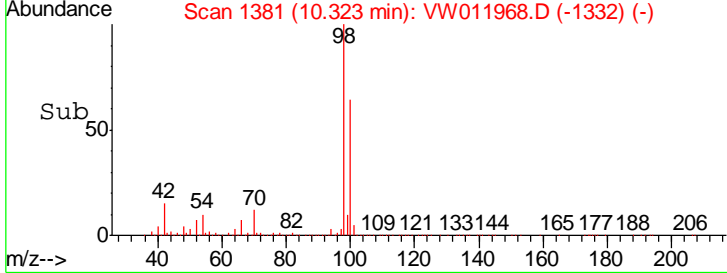
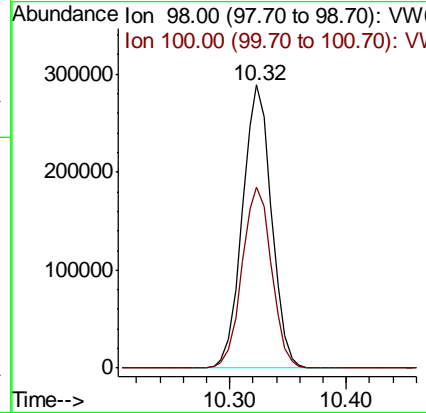
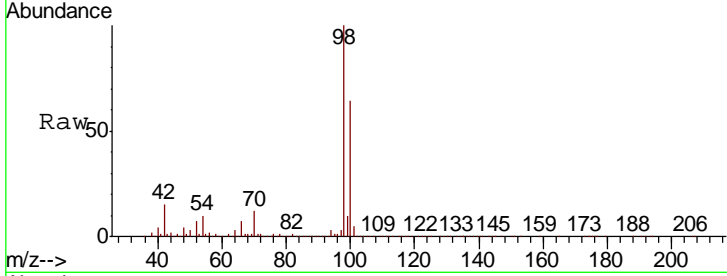




#50  
 Toluene-d8  
 Concen: 54.312 ug/l  
 RT: 10.32 min Scan# 1381  
 Delta R.T. 0.00 min  
 Lab File: VW011968.D  
 Acq: 16 Aug 2019 16:34

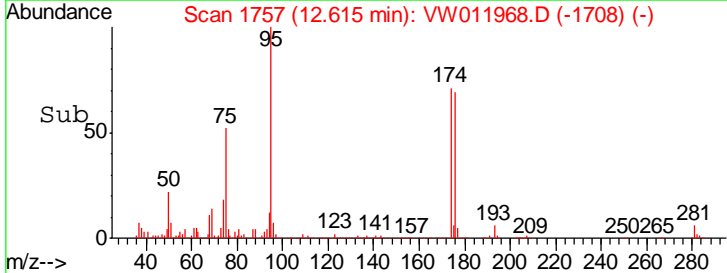
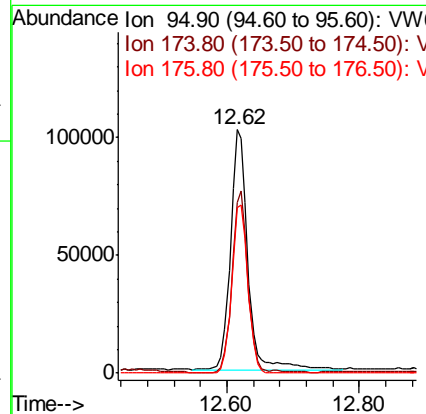
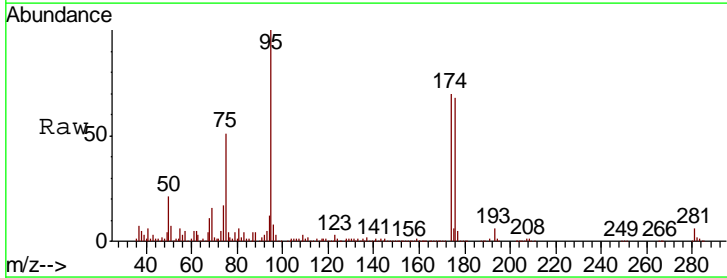
Instrument :  
 MSVOA\_W  
 ClientSampled :  
 PX-5

Tgt Ion: 98 Resp: 501953  
 Ion Ratio Lower Upper  
 98 100  
 100 65.0 52.7 79.1

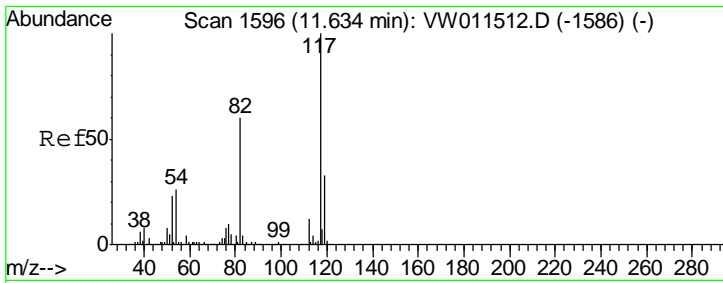


#62  
 4-Bromofluorobenzene  
 Concen: 56.445 ug/l  
 RT: 12.62 min Scan# 1757  
 Delta R.T. 0.00 min  
 Lab File: VW011968.D  
 Acq: 16 Aug 2019 16:34

Tgt Ion: 95 Resp: 185984  
 Ion Ratio Lower Upper  
 95 100  
 174 68.0 0.0 150.2  
 176 65.3 0.0 144.4



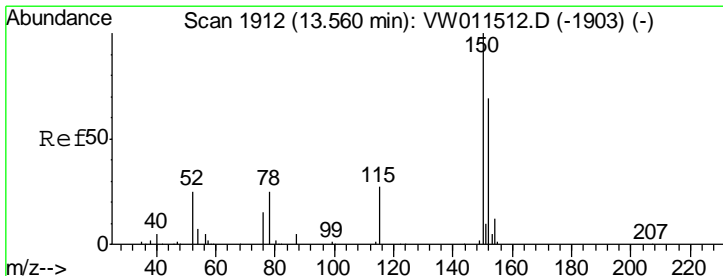
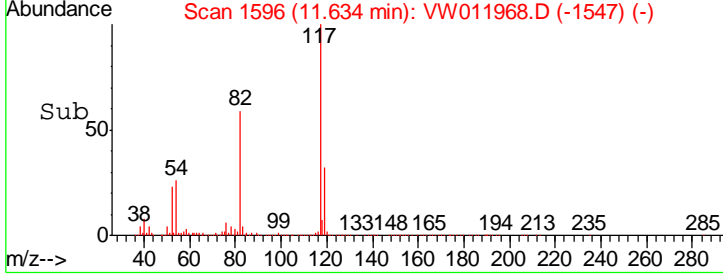
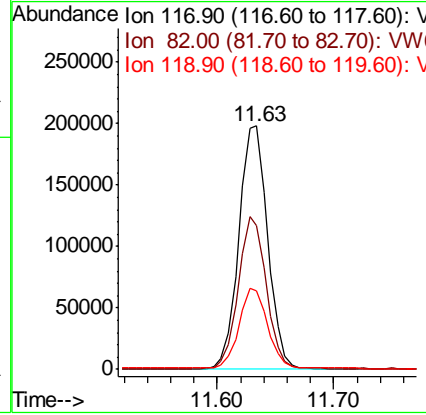
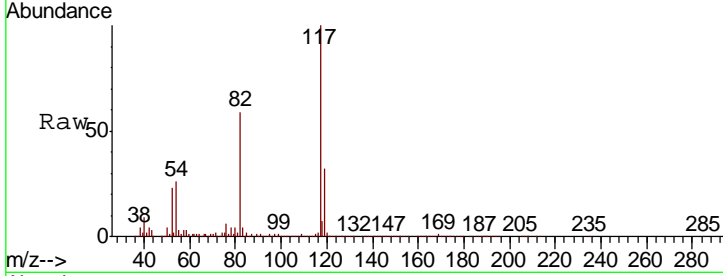




#63  
 Chlorobenzene-d5  
 Concen: 50.000 ug/l  
 RT: 11.63 min Scan# 1596  
 Delta R.T. 0.00 min  
 Lab File: VW011968.D  
 Acq: 16 Aug 2019 16:34

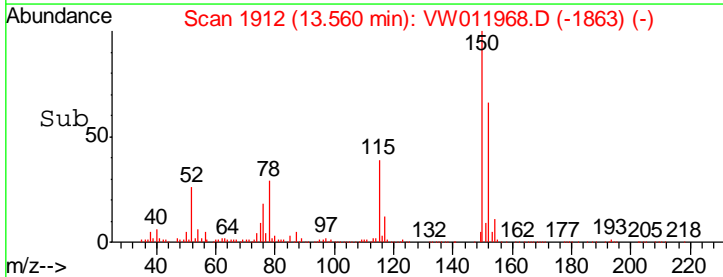
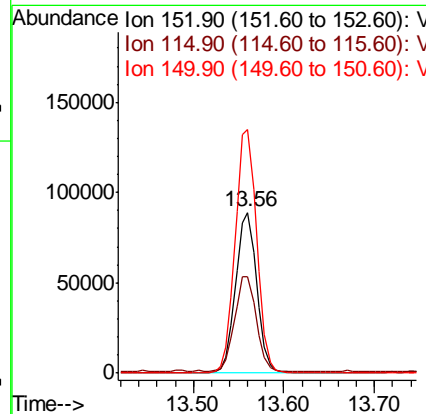
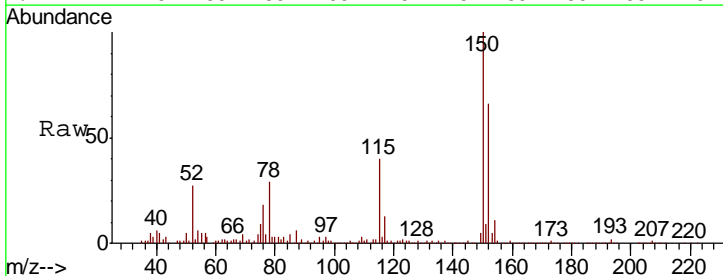
Instrument : MSVOA\_W  
 ClientSampled : PX-5

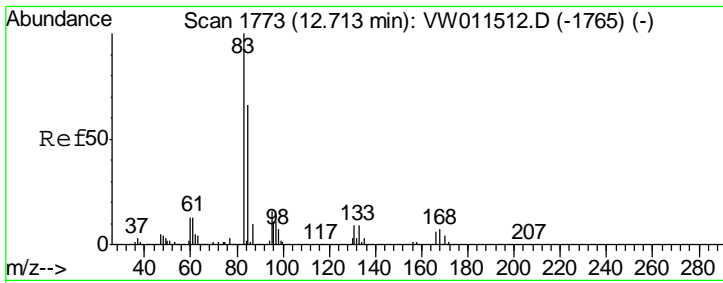
Tgt Ion	Resp	Lower	Upper
117	339753		
82	58.8	47.9	71.9
119	32.0	26.2	39.2



#72  
 1,4-Dichlorobenzene-d4  
 Concen: 50.000 ug/l  
 RT: 13.56 min Scan# 1912  
 Delta R.T. 0.00 min  
 Lab File: VW011968.D  
 Acq: 16 Aug 2019 16:34

Tgt Ion	Resp	Lower	Upper
152	143349		
115	60.2	30.5	91.5
150	154.3	0.0	352.6

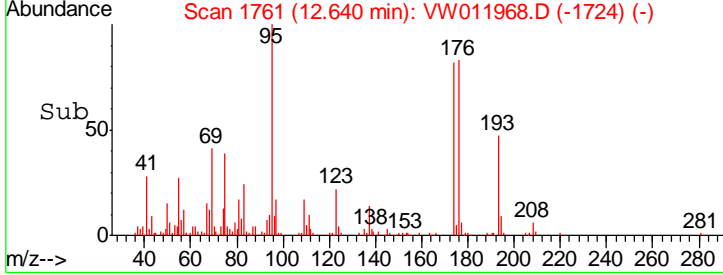
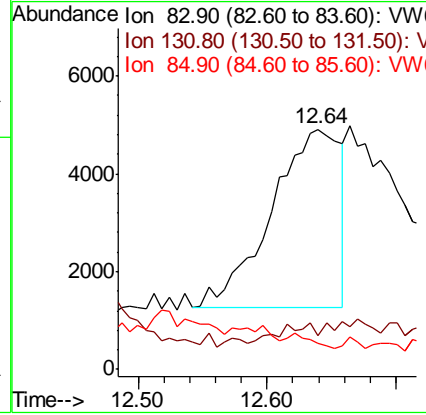
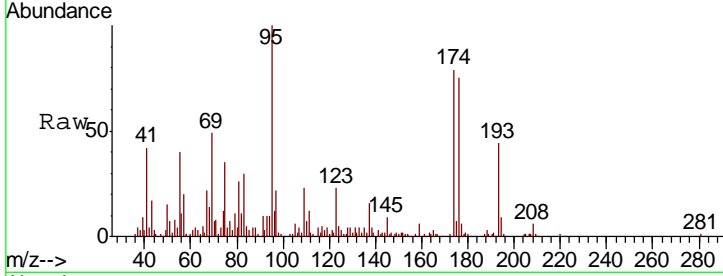




#75  
 1,1,2,2-Tetrachloroethane  
 Concen: 6.712 ug/l  
 RT: 12.64 min Scan# 1761  
 Delta R.T. -0.07 min  
 Lab File: VW011968.D  
 Acq: 16 Aug 2019 16:34

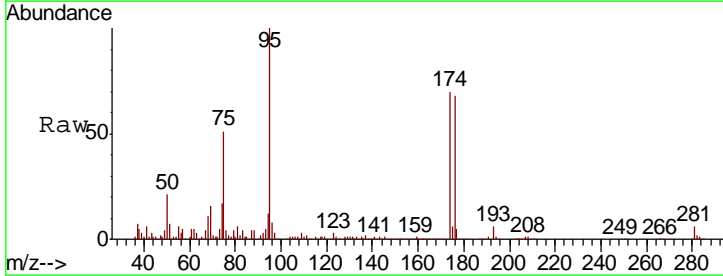
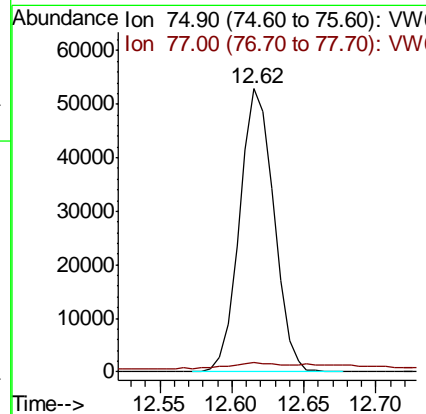
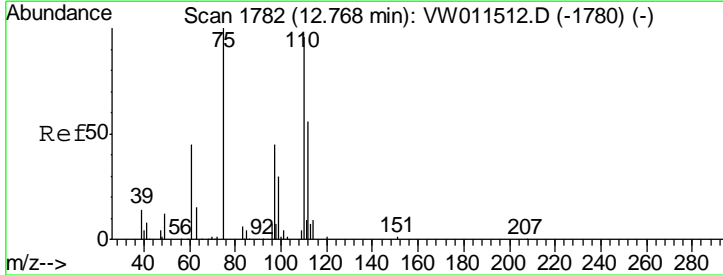
Instrument : MSVOA\_W  
 ClientSampled : PX-5

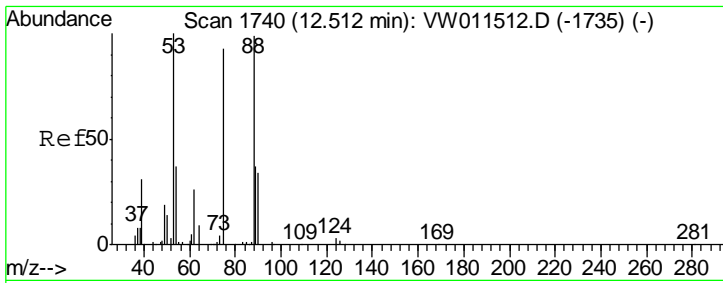
Tgt Ion	Resp	Lower	Upper
83	13501		
131	0.0	4.9	14.6#
85	0.0	31.8	95.4#



#76  
 1,2,3-Trichloropropane  
 Concen: 57.623 ug/l  
 RT: 12.62 min Scan# 1757  
 Delta R.T. -0.15 min  
 Lab File: VW011968.D  
 Acq: 16 Aug 2019 16:34

Tgt Ion	Resp	Lower	Upper
75	87403		
77	3.3	0.0	0.0#

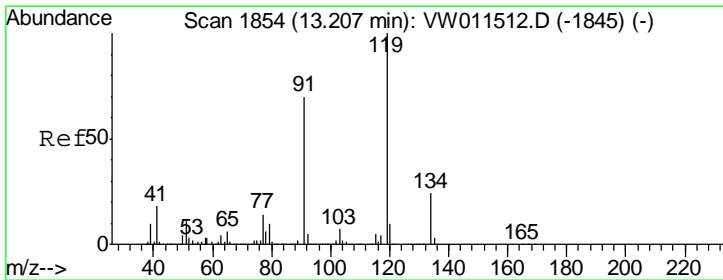
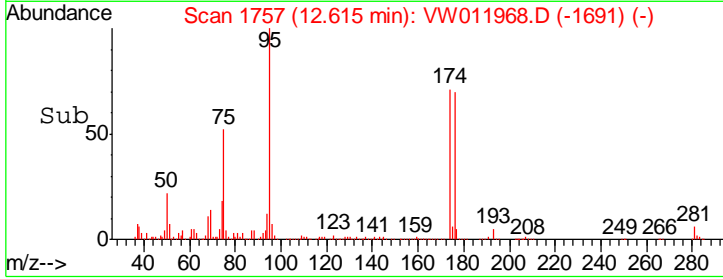
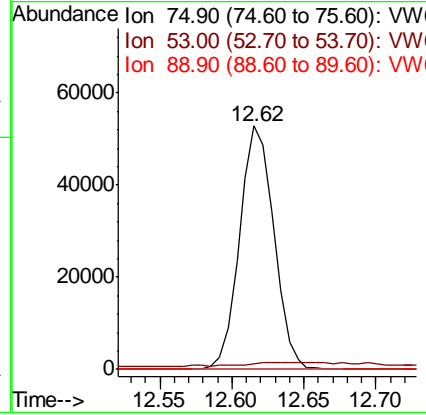
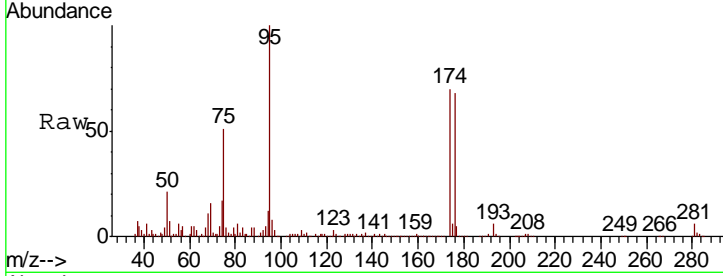




#81  
 trans-1,4-Dichloro-2-butene  
 Concen: 132.802 ug/l  
 RT: 12.62 min Scan# 1757  
 Delta R.T. 0.10 min  
 Lab File: VW011968.D  
 Acq: 16 Aug 2019 16:34

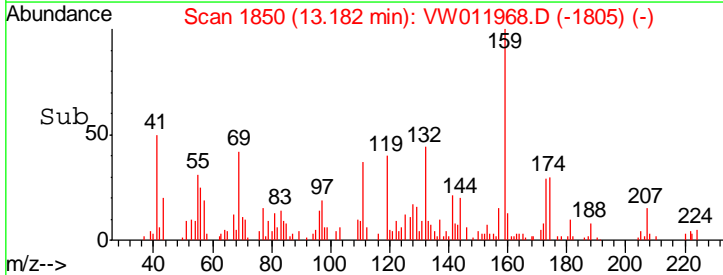
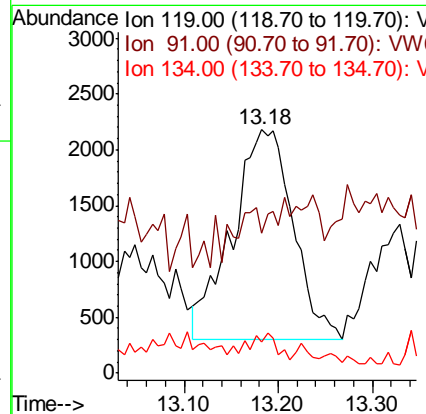
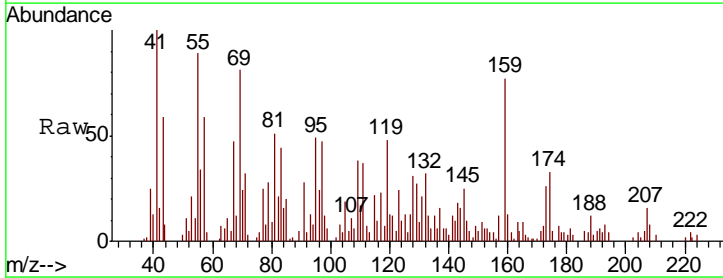
Instrument :  
 MSVOA\_W  
 ClientSampled :  
 PX-5

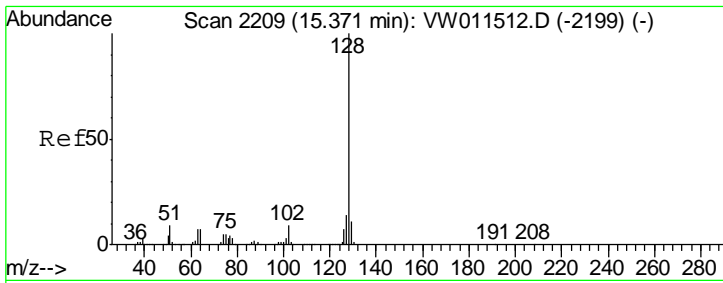
Tgt Ion	Resp	Lower	Upper
75	100		
53	0.0	88.0	132.0#
89	0.2	35.3	52.9#



#83  
 tert-Butylbenzene  
 Concen: 1.133 ug/l  
 RT: 13.18 min Scan# 1850  
 Delta R.T. -0.02 min  
 Lab File: VW011968.D  
 Acq: 16 Aug 2019 16:34

Tgt Ion	Resp	Lower	Upper
119	100		
91	10.5	34.5	103.6#
134	5.1	12.4	37.4#





#95  
 Naphthalene  
 Concen: 2.130 ug/l  
 RT: 15.37 min Scan# 2209  
 Delta R.T. 0.00 min  
 Lab File: VW011968.D  
 Acq: 16 Aug 2019 16:34

Instrument : MSVOA\_W  
 ClientSampled : PX-5

Tgt Ion	Ratio	Lower	Upper
128	100		
127	0.0	10.6	16.0#
129	120.5	8.6	13.0#

