

Data Path : Z:\VOASRV\HPCHEM1\MSVOA W\DATA\VW081919\
 Data File : VW011990.D
 Acq On : 19 Aug 2019 14:40
 Operator : SY/VA
 Sample : K4385-11
 Misc : 5.66G/5ML/MSVOA W/SOIL
 ALS Vial : 15 Sample Multiplier: 1

Instrument :
 MSVOA_W
 ClientSampleId :

Quant Time: Aug 19 15:06:33 2019
 Quant Method : Z:\VOASRV\HPCHEM1\MSVOA_W\METHOD\82W072719S.M
 Quant Title : SW846 8260
 QLast Update : Sat Jul 27 00:23:30 2019
 Response via : Initial Calibration

Internal Standards	R.T.	QIon	Response	Conc	Units	Dev(Min)
1) Pentafluorobenzene	7.95	168	197725	50.00	ug/l	0.00
34) 1,4-Difluorobenzene	8.84	114	339156	50.00	ug/l	0.00
63) Chlorobenzene-d5	11.63	117	225418	50.00	ug/l	0.00
72) 1,4-Dichlorobenzene-d4	13.56	152	55036	50.00	ug/l	0.00

System Monitoring Compounds

33) 1,2-Dichloroethane-d4	8.31	65	134070	59.05	ug/l	0.00
Spiked Amount				50.000		
				Recovery	=	118.10%
35) Dibromofluoromethane	7.88	113	106645	56.05	ug/l	0.00
Spiked Amount				50.000		
				Recovery	=	112.10%
50) Toluene-d8	10.32	98	369205	47.39	ug/l	0.00
Spiked Amount				50.000		
				Recovery	=	94.78%
62) 4-Bromofluorobenzene	12.62	95	88934	32.02	ug/l	0.00
Spiked Amount				50.000		
				Recovery	=	64.04%

Target Compounds

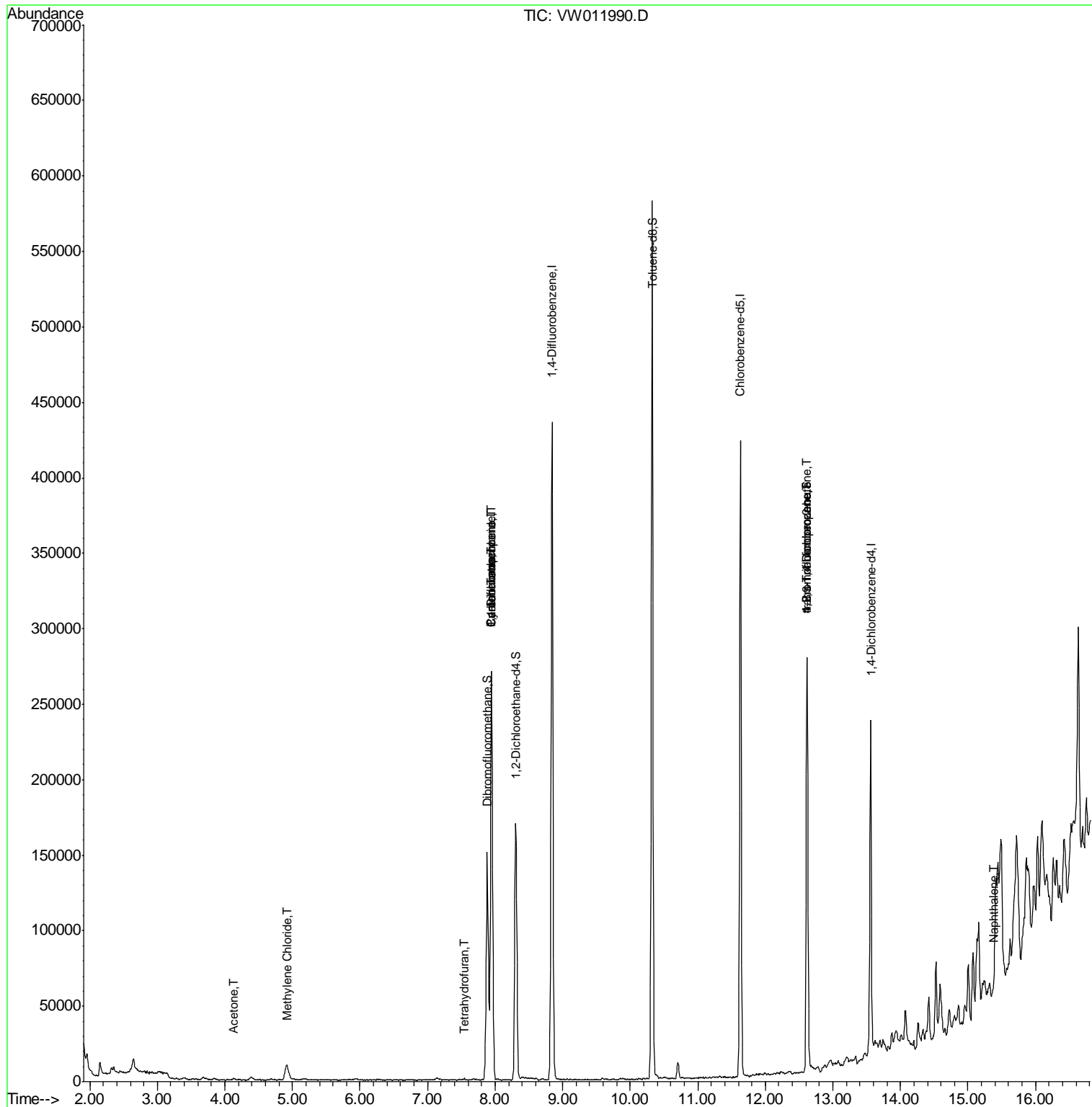
					Qvalue	
11) Tert butyl alcohol	5.16	59	869	Below Cal	#	91
16) Acetone	4.13	43	1552	2.149	ug/l #	88
20) Methylene Chloride	4.92	84	7836	3.146	ug/l #	99
29) Tetrahydrofuran	7.54	42	647	1.198	ug/l #	80
31) Cyclohexane	7.95	56	4807	1.132	ug/l #	1
36) 1,1-Dichloropropene	7.95	75	16663	4.725	ug/l #	52
38) Carbon Tetrachloride	7.95	117	19450	6.442	ug/l #	16
76) 1,2,3-Trichloropropane	12.62	75	47025	80.751	ug/l #	100
81) trans-1,4-Dichloro-2-buten	12.62	75	47025	186.104	ug/l #	6
95) Naphthalene	15.37	128	465	2.271	ug/l #	73

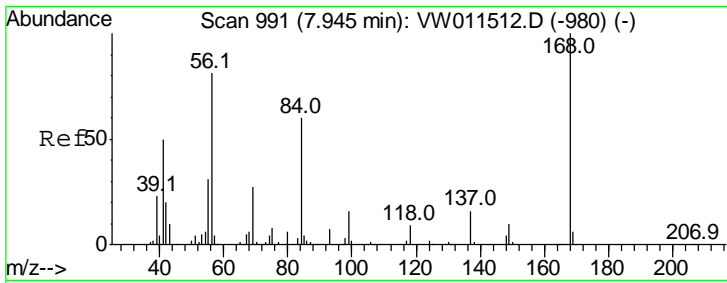
(#) = qualifier out of range (m) = manual integration (+) = signals summed

Data Path : Z:\VOASRV\HPCHEM1\MSVOA W\DATA\VW081919\
 Data File : VW011990.D
 Acq On : 19 Aug 2019 14:40
 Operator : SY/VA
 Sample : K4385-11
 Misc : 5.66G/5ML/MSVOA W/SOIL
 ALS Vial : 15 Sample Multiplier: 1

Instrument :
 MSVOA_W
 ClientSampled :

Quant Time: Aug 19 15:06:33 2019
 Quant Method : Z:\VOASRV\HPCHEM1\MSVOA_W\METHOD\82W072719S.M
 Quant Title : SW846 8260
 QLast Update : Sat Jul 27 00:23:30 2019
 Response via : Initial Calibration

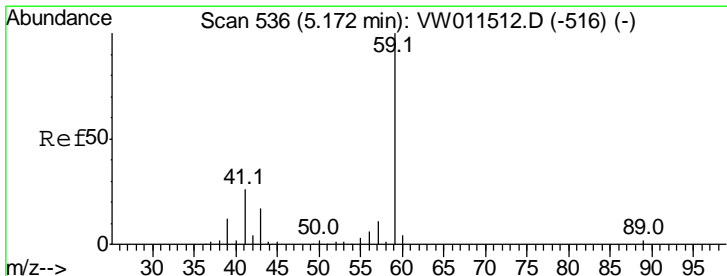
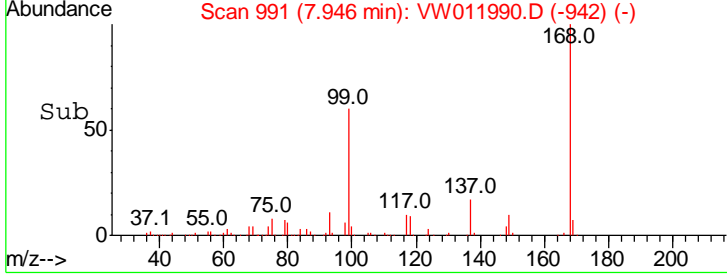
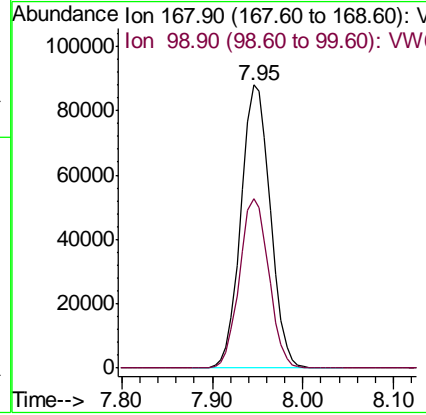
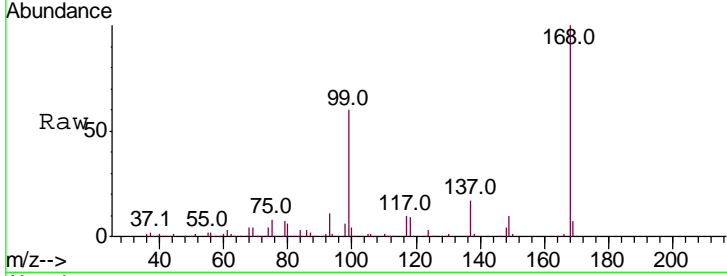




#1
 Pentafluorobenzene
 Concen: 50.000 ug/l
 RT: 7.95 min Scan# 991
 Delta R.T. 0.00 min
 Lab File: VW011990.D
 Acq: 19 Aug 2019 14:40

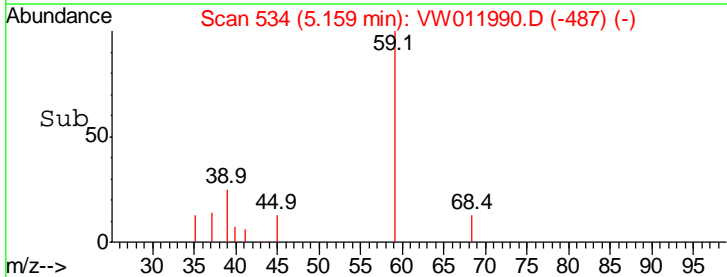
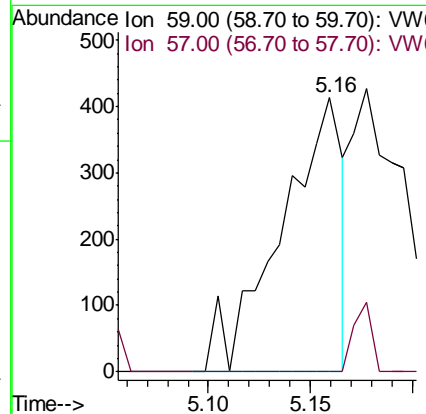
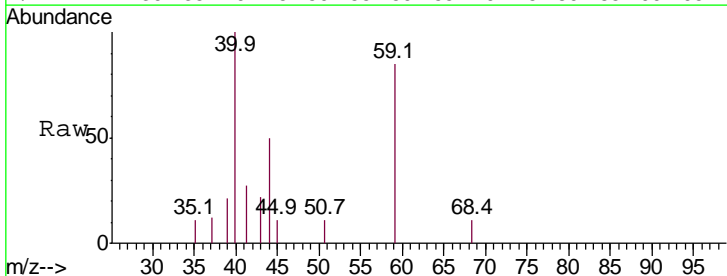
Instrument :
 MSVOA_W
 ClientSampled :

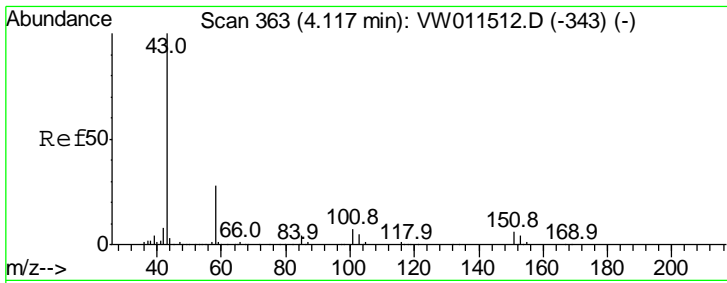
Tgt Ion: 168 Resp: 197725
 Ion Ratio Lower Upper
 168 100
 99 60.0 48.2 72.4



#11
 Tert butyl alcohol
 Concen: Below Cal
 RT: 5.16 min Scan# 534
 Delta R.T. -0.01 min
 Lab File: VW011990.D
 Acq: 19 Aug 2019 14:40

Tgt Ion: 59 Resp: 869
 Ion Ratio Lower Upper
 59 100
 57 7.4 8.5 12.7#

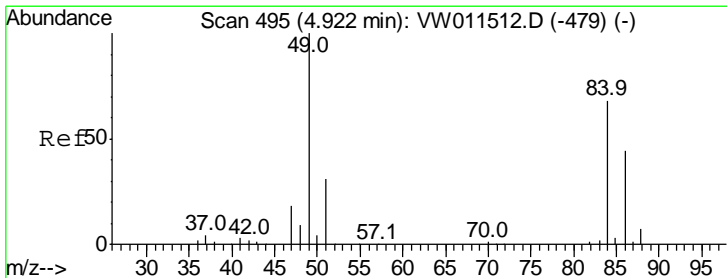
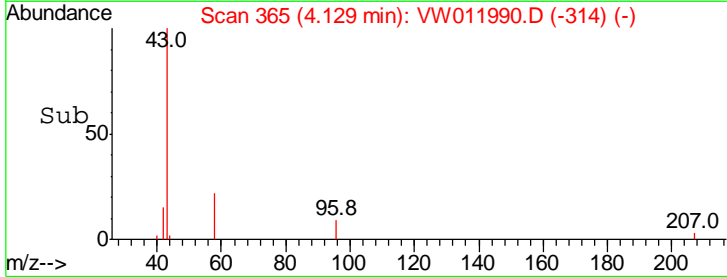
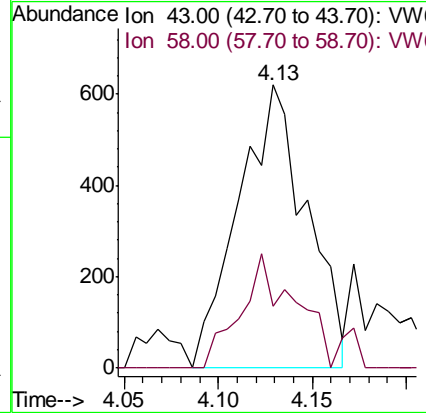
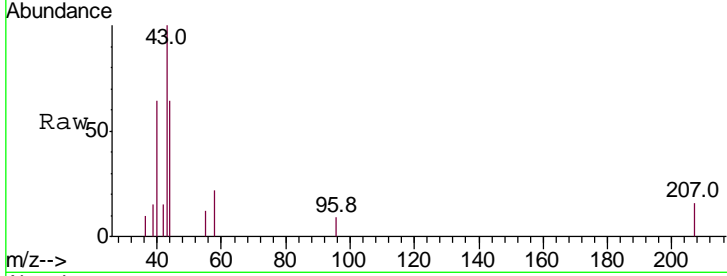




#16
 Acetone
 Concen: 2.149 ug/l
 RT: 4.13 min Scan# 365
 Delta R.T. 0.01 min
 Lab File: VW011990.D
 Acq: 19 Aug 2019 14:40

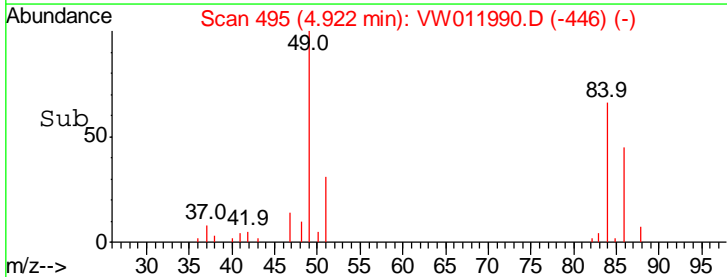
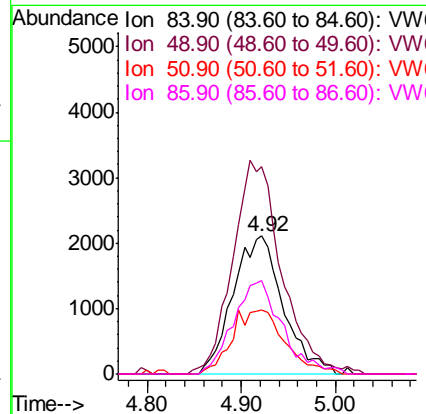
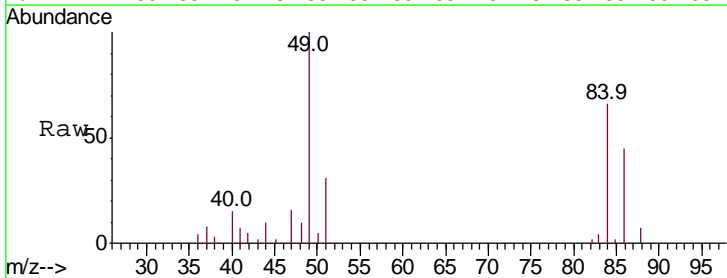
Instrument :
 MSVOA_W
 ClientSampled :

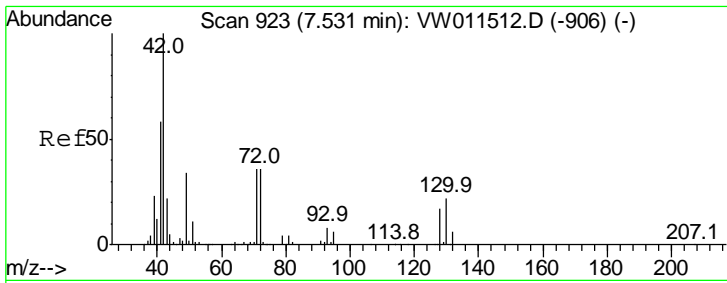
Tgt Ion: 43 Resp: 1552
 Ion Ratio Lower Upper
 43 100
 58 21.6 22.3 33.5#



#20
 Methylene Chloride
 Concen: 3.146 ug/l
 RT: 4.92 min Scan# 495
 Delta R.T. 0.00 min
 Lab File: VW011990.D
 Acq: 19 Aug 2019 14:40

Tgt Ion: 84 Resp: 7836
 Ion Ratio Lower Upper
 84 100
 49 147.5 117.8 176.6
 51 46.1 37.0 55.4
 86 67.5 51.8 77.8

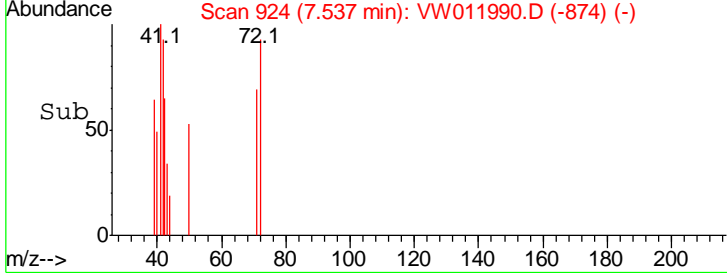
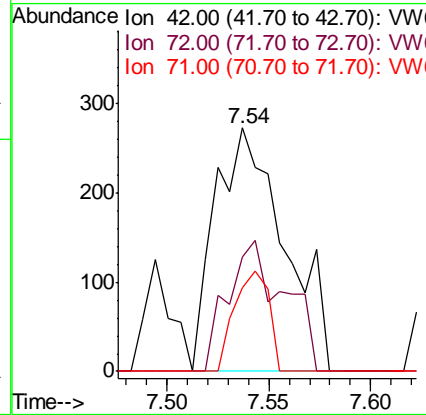
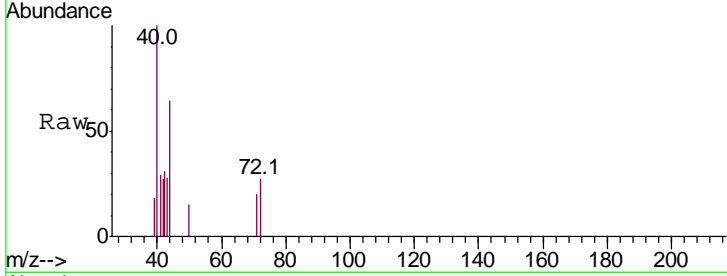




#29
 Tetrahydrofuran
 Concen: 1.198 ug/l
 RT: 7.54 min Scan# 924
 Delta R.T. 0.01 min
 Lab File: VW011990.D
 Acq: 19 Aug 2019 14:40

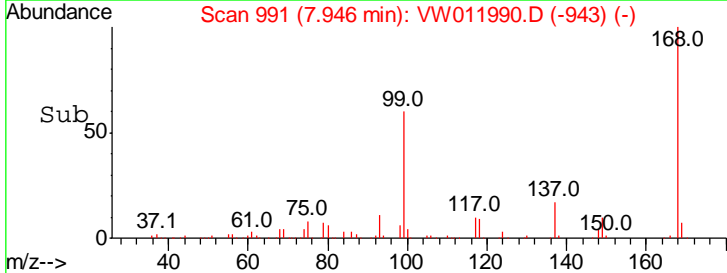
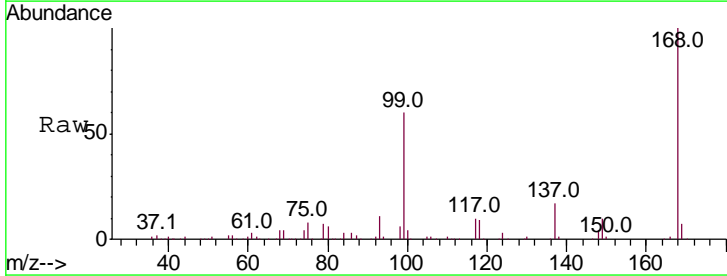
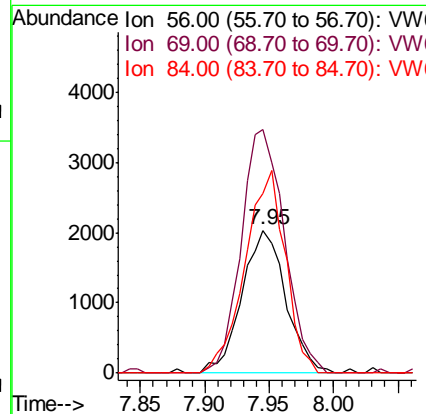
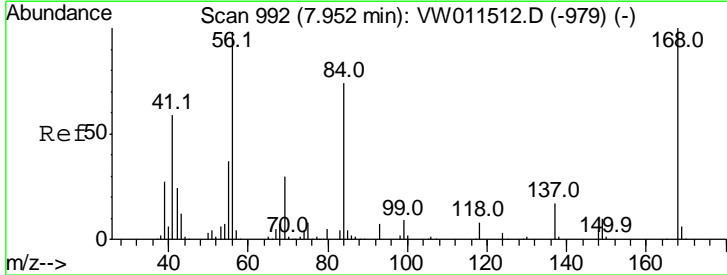
Instrument :
 MSVOA_W
ClientSampled :

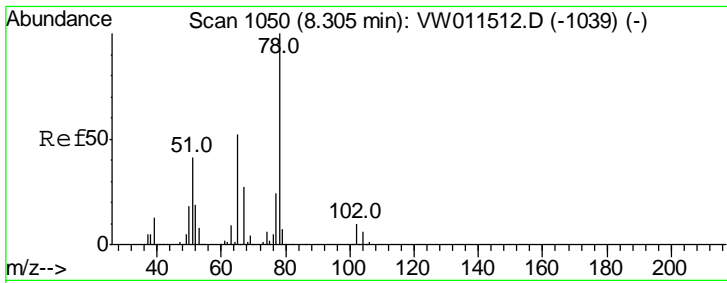
Tgt Ion	Ratio	Lower	Upper
42	100		
72	43.9	27.1	40.7#
71	20.2	26.2	39.4#



#31
 Cyclohexane
 Concen: 1.132 ug/l
 RT: 7.95 min Scan# 991
 Delta R.T. -0.01 min
 Lab File: VW011990.D
 Acq: 19 Aug 2019 14:40

Tgt Ion	Ratio	Lower	Upper
56	100		
69	170.6	24.3	36.5#
84	125.5	60.4	90.6#

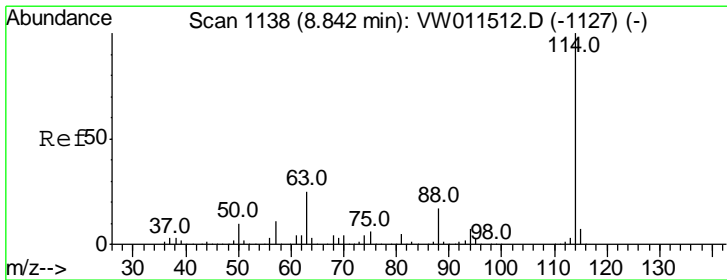
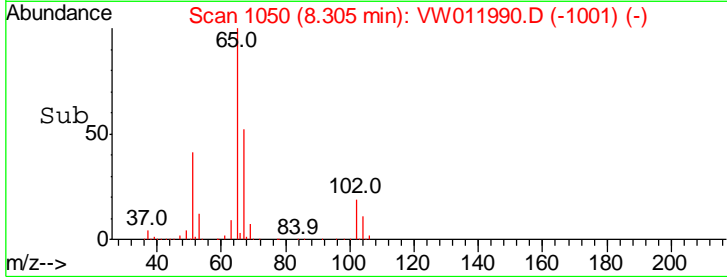
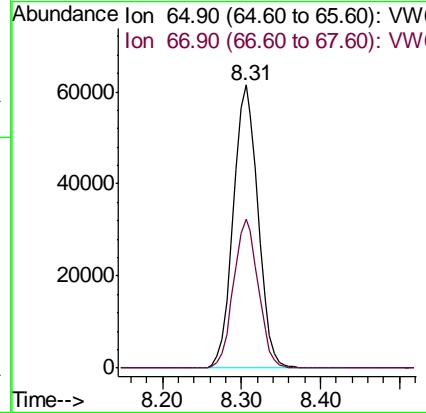
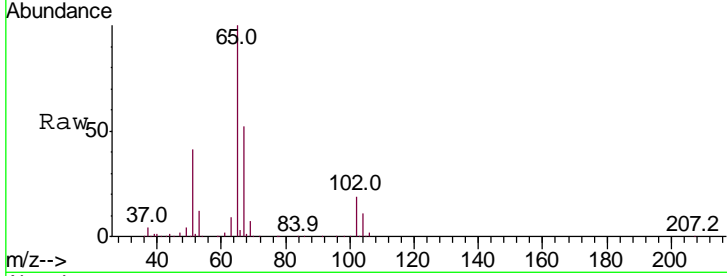




#33
 1,2-Dichloroethane-d4
 Concen: 59.050 ug/l
 RT: 8.31 min Scan# 1050
 Delta R.T. 0.00 min
 Lab File: VW011990.D
 Acq: 19 Aug 2019 14:40

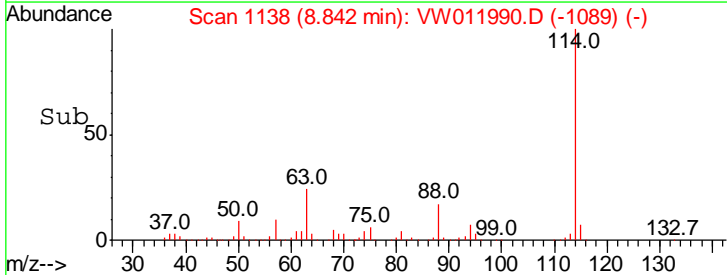
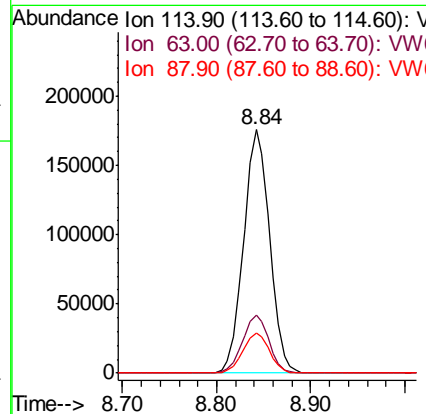
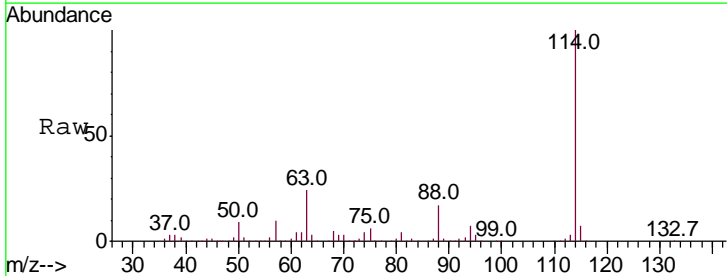
Instrument :
 MSVOA_W
 ClientSampled :

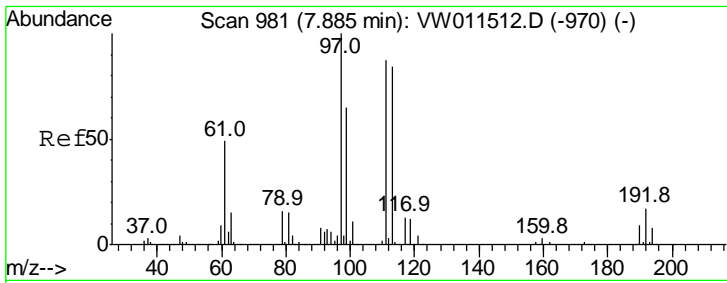
Tgt Ion	Resp	Lower	Upper
65	100		
67	53.0	0.0	105.2



#34
 1,4-Difluorobenzene
 Concen: 50.000 ug/l
 RT: 8.84 min Scan# 1138
 Delta R.T. 0.00 min
 Lab File: VW011990.D
 Acq: 19 Aug 2019 14:40

Tgt Ion	Resp	Lower	Upper
114	100		
63	23.7	0.0	49.2
88	16.6	0.0	33.8

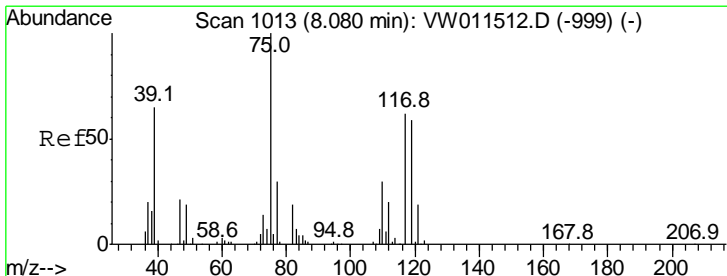
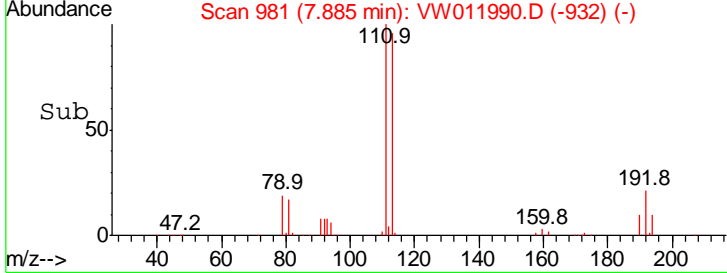
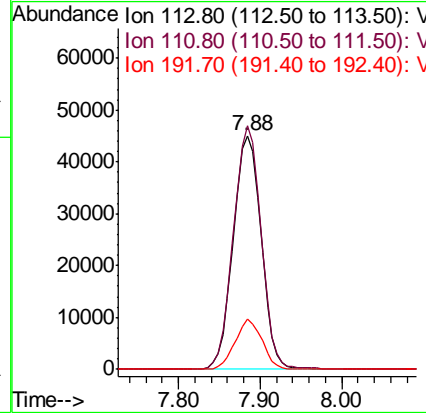
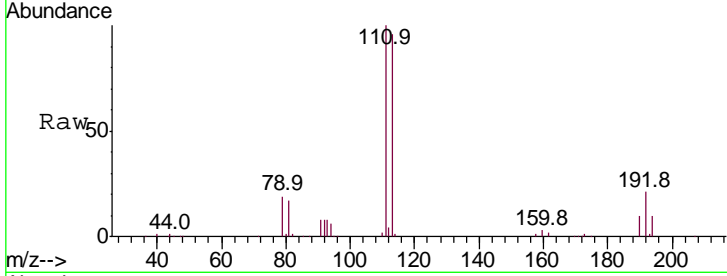




#35
 Dibromofluoromethane
 Concen: 56.049 ug/l
 RT: 7.88 min Scan# 981
 Delta R.T. 0.00 min
 Lab File: VW011990.D
 Acq: 19 Aug 2019 14:40

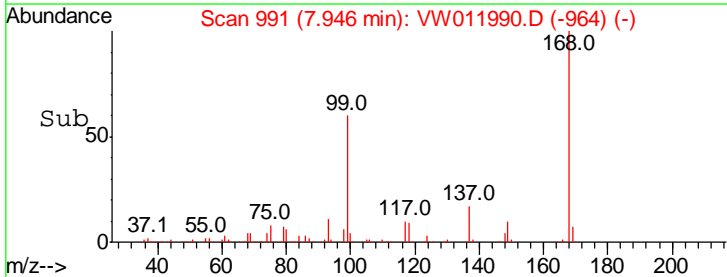
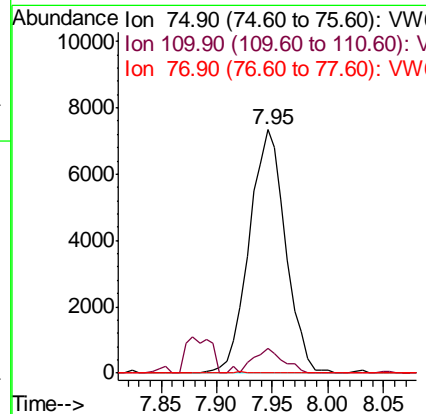
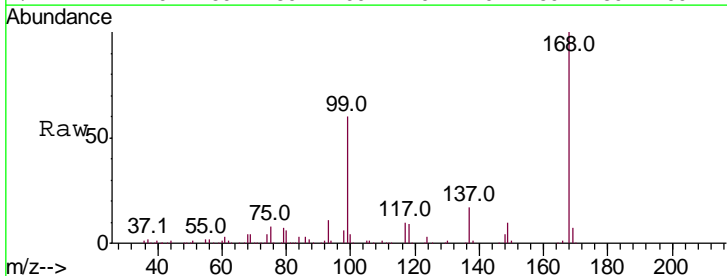
Instrument :
 MSVOA_W
 ClientSampled :

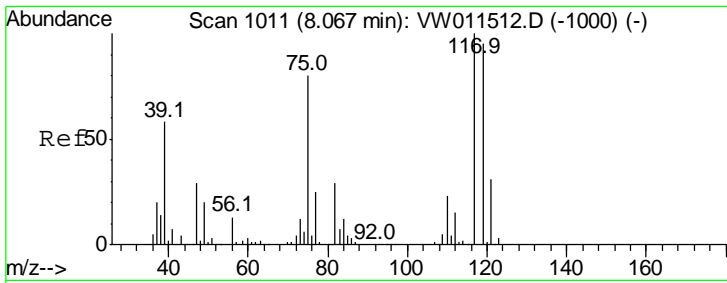
Tgt Ion	Resp	Lower	Upper
113	106645		
111	102.9	82.7	124.1
192	20.7	16.1	24.1



#36
 1,1-Dichloropropene
 Concen: 4.725 ug/l
 RT: 7.95 min Scan# 991
 Delta R.T. -0.13 min
 Lab File: VW011990.D
 Acq: 19 Aug 2019 14:40

Tgt Ion	Resp	Lower	Upper
75	16663		
110	8.6	15.6	46.8#
77	0.0	24.3	36.5#

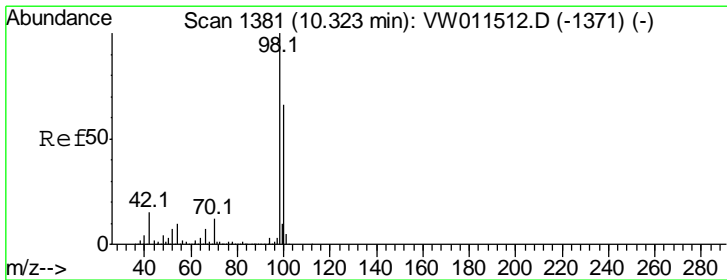
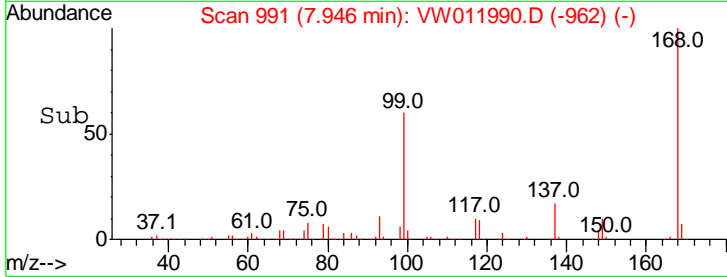
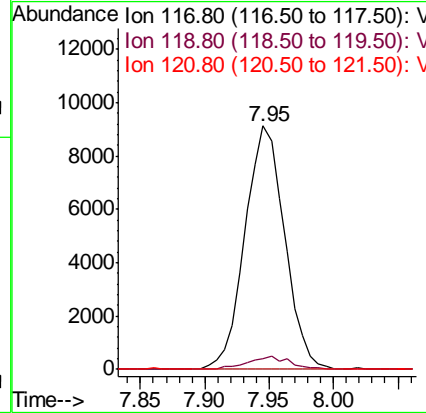
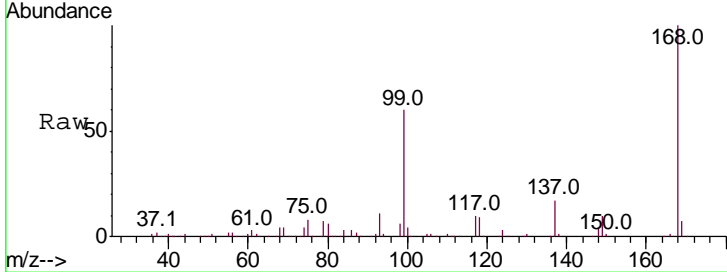




#38
 Carbon Tetrachloride
 Concen: 6.442 ug/l
 RT: 7.95 min Scan# 991
 Delta R.T. -0.12 min
 Lab File: VW011990.D
 Acq: 19 Aug 2019 14:40

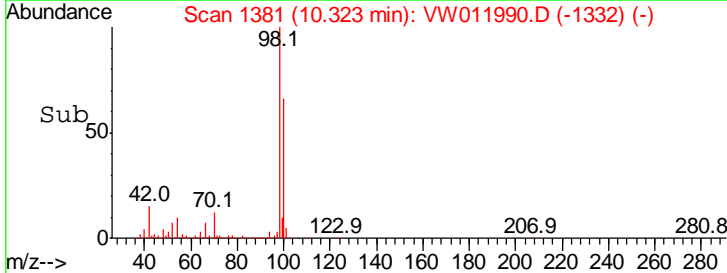
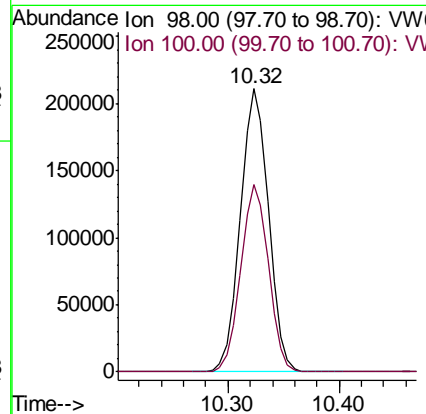
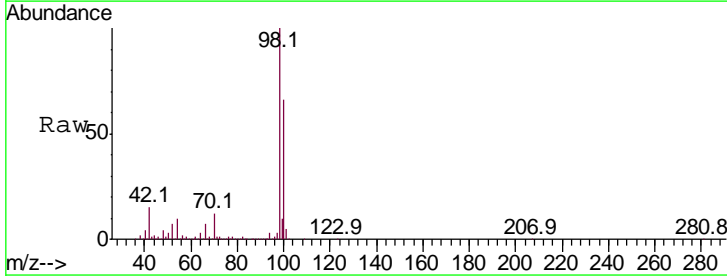
Instrument :
 MSVOA_W
 ClientSampled :

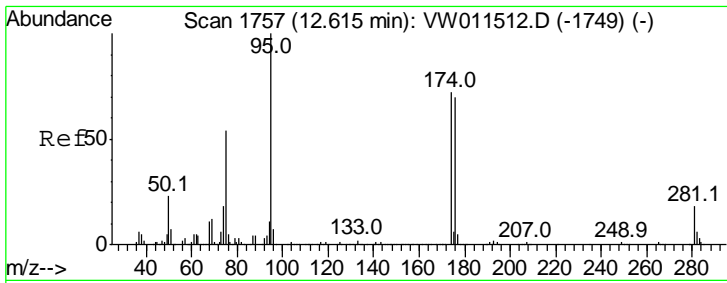
Tgt Ion	Resp	Lower	Upper
117	100		
119	4.2	75.8	113.6#
121	0.0	24.7	37.1#



#50
 Toluene-d8
 Concen: 47.393 ug/l
 RT: 10.32 min Scan# 1381
 Delta R.T. 0.00 min
 Lab File: VW011990.D
 Acq: 19 Aug 2019 14:40

Tgt Ion	Resp	Lower	Upper
98	100		
100	65.3	52.7	79.1

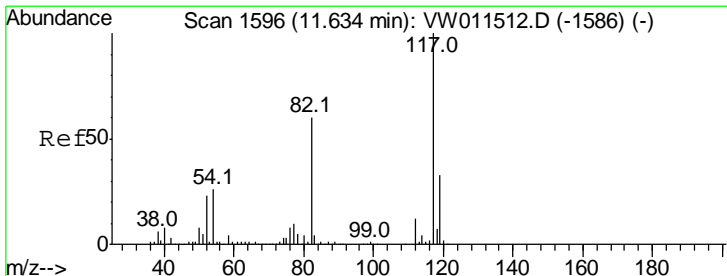
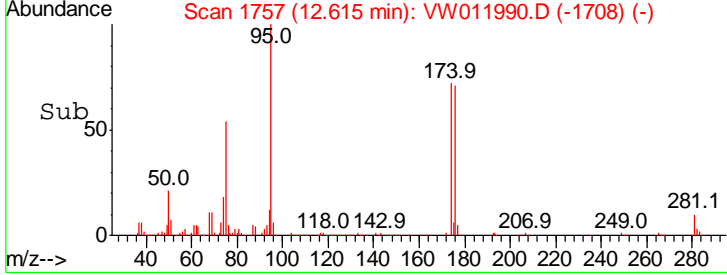
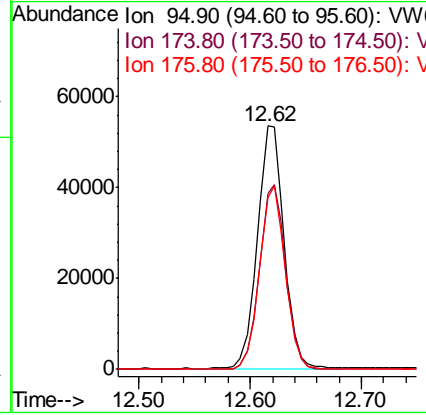
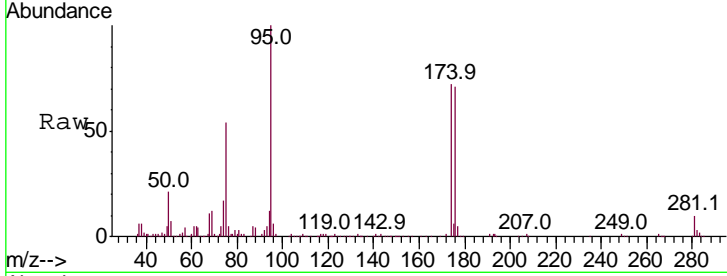




#62
 4-Bromofluorobenzene
 Concen: 32.021 ug/l
 RT: 12.62 min Scan# 1757
 Delta R.T. 0.00 min
 Lab File: VW011990.D
 Acq: 19 Aug 2019 14:40

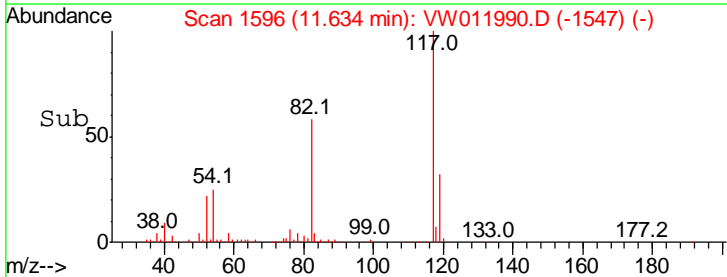
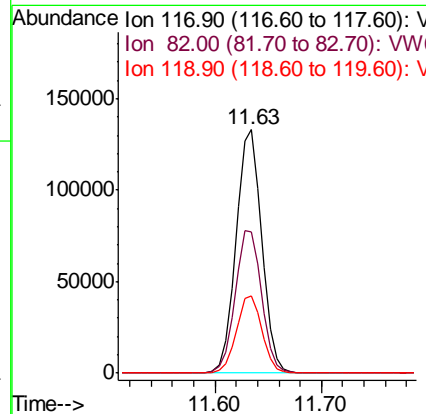
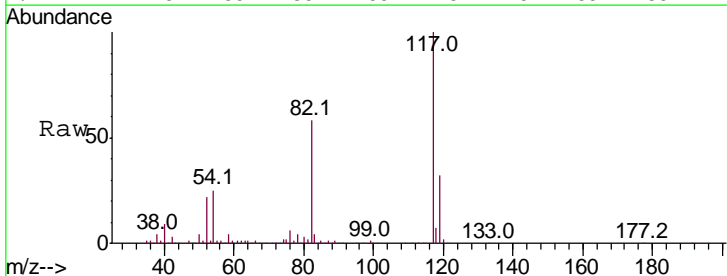
Instrument :
 MSVOA_W
 ClientSampled :

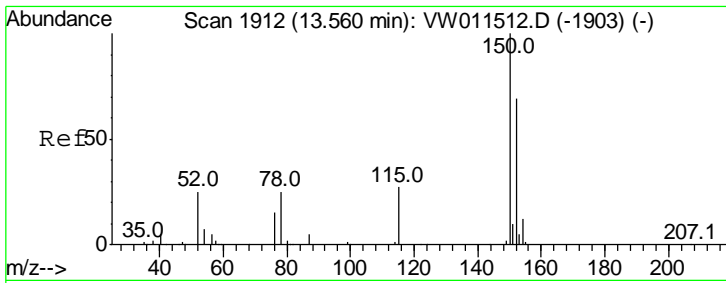
Tgt Ion	Resp	Lower	Upper
95	100		
174	74.6	0.0	150.2
176	73.2	0.0	144.4



#63
 Chlorobenzene-d5
 Concen: 50.000 ug/l
 RT: 11.63 min Scan# 1596
 Delta R.T. 0.00 min
 Lab File: VW011990.D
 Acq: 19 Aug 2019 14:40

Tgt Ion	Resp	Lower	Upper
117	100		
82	58.1	47.9	71.9
119	31.8	26.2	39.2

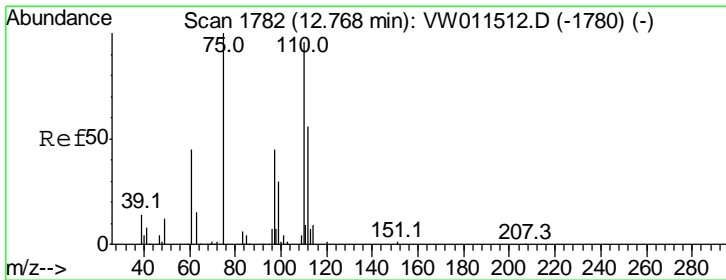
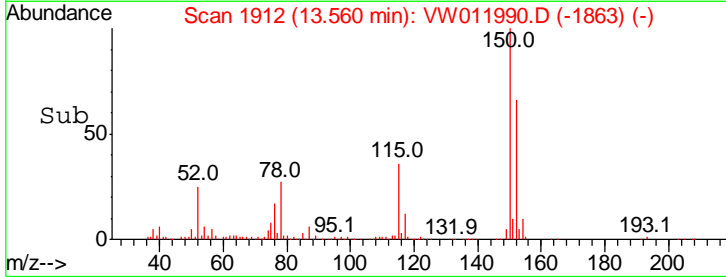
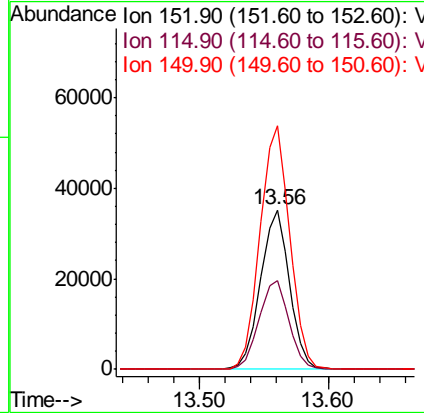
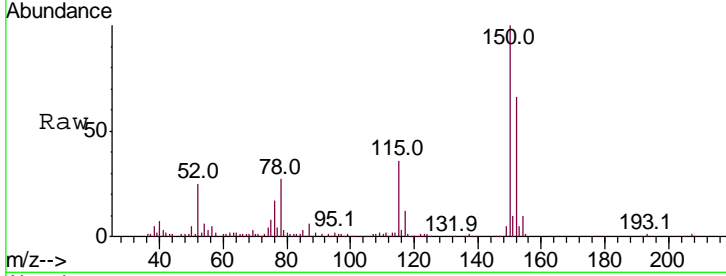




#72
 1,4-Dichlorobenzene-d4
 Concen: 50.000 ug/l
 RT: 13.56 min Scan# 1912
 Delta R.T. 0.00 min
 Lab File: VW011990.D
 Acq: 19 Aug 2019 14:40

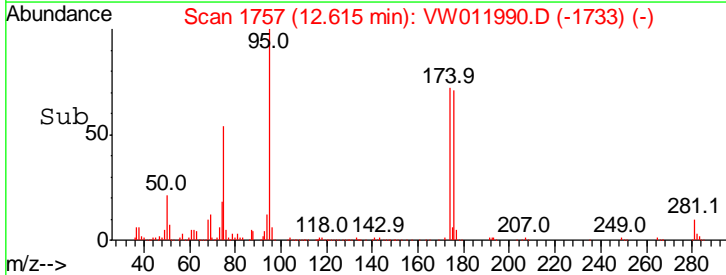
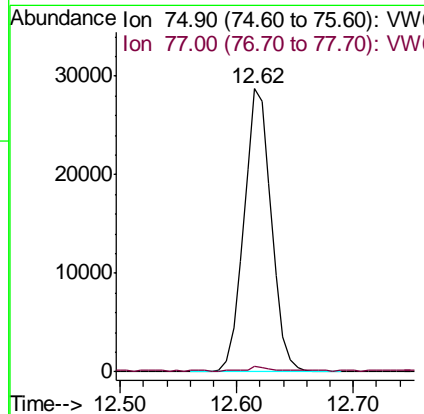
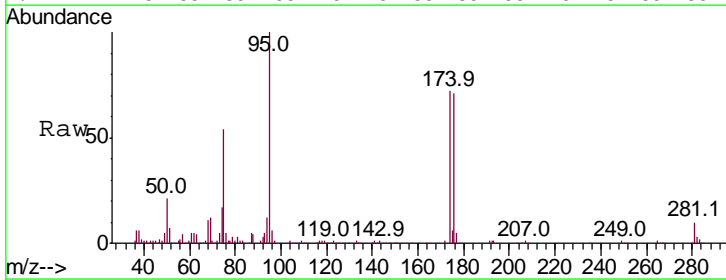
Instrument :
 MSVOA_W
 ClientSampled :

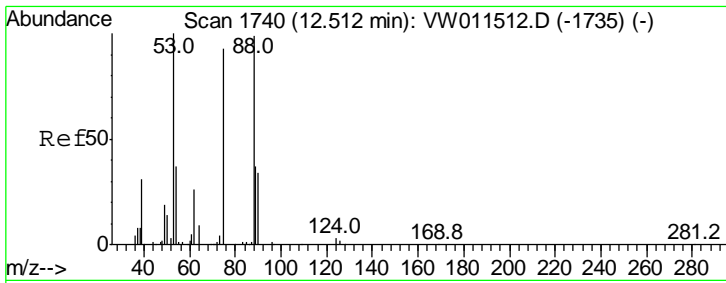
Tgt Ion	Resp	Lower	Upper
152	100		
115	57.6	30.5	91.5
150	155.3	0.0	352.6



#76
 1,2,3-Trichloropropane
 Concen: 80.751 ug/l
 RT: 12.62 min Scan# 1757
 Delta R.T. -0.15 min
 Lab File: VW011990.D
 Acq: 19 Aug 2019 14:40

Tgt Ion	Resp	Lower	Upper
75	100		
77	1.5	0.0	0.0#

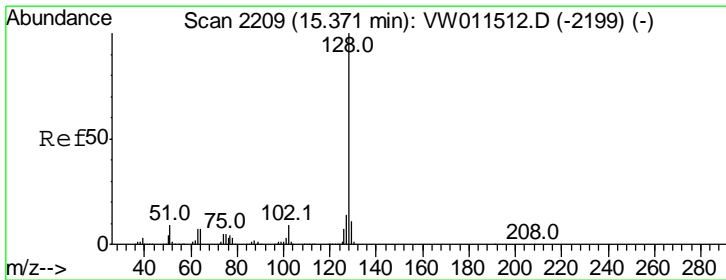
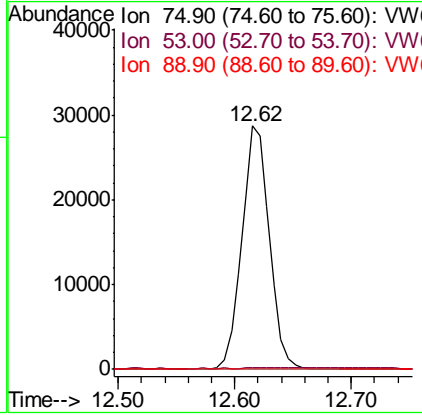
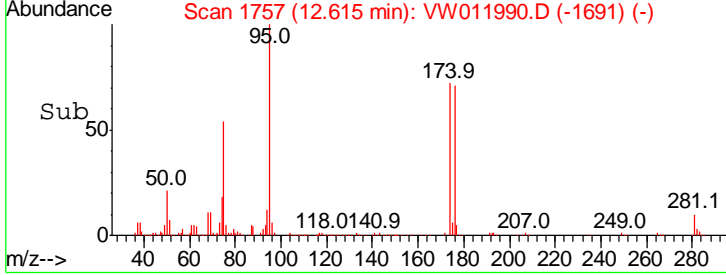
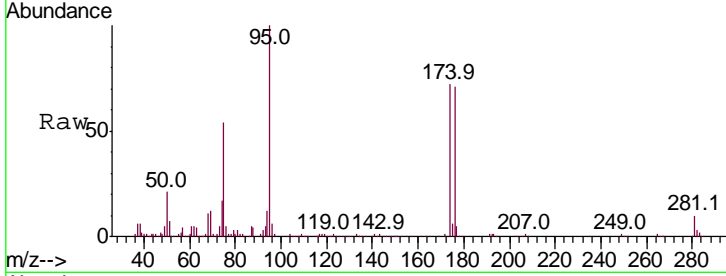




#81
 trans-1,4-Dichloro-2-butene
 Concen: 186.104 ug/l
 RT: 12.62 min Scan# 1757
 Delta R.T. 0.10 min
 Lab File: VW011990.D
 Acq: 19 Aug 2019 14:40

Instrument : MSVOA_W
 ClientSampled :

Tgt Ion	Resp	Lower	Upper
75	100		
53	0.4	88.0	132.0#
89	0.1	35.3	52.9#



#95
 Naphthalene
 Concen: 2.271 ug/l
 RT: 15.37 min Scan# 2209
 Delta R.T. 0.00 min
 Lab File: VW011990.D
 Acq: 19 Aug 2019 14:40

Tgt Ion	Resp	Lower	Upper
128	100		
127	18.1	10.6	16.0#
129	27.7	8.6	13.0#

