

Data Path : Z:\VOASRV\HPCHEM1\MSVOA W\DATA\VW081919\
 Data File : VW011989.D
 Acq On : 19 Aug 2019 14:14
 Operator : SY/VA
 Sample : K4385-09
 Misc : 6.55G/5ML/MSVOA W/SOIL
 ALS Vial : 14 Sample Multiplier: 1

Instrument :
 MSVOA_W
 ClientSampleId :
 T8-A4-(2)

Quant Time: Aug 19 14:59:24 2019
 Quant Method : Z:\VOASRV\HPCHEM1\MSVOA_W\METHOD\82W072719S.M
 Quant Title : SW846 8260
 QLast Update : Sat Jul 27 00:23:30 2019
 Response via : Initial Calibration

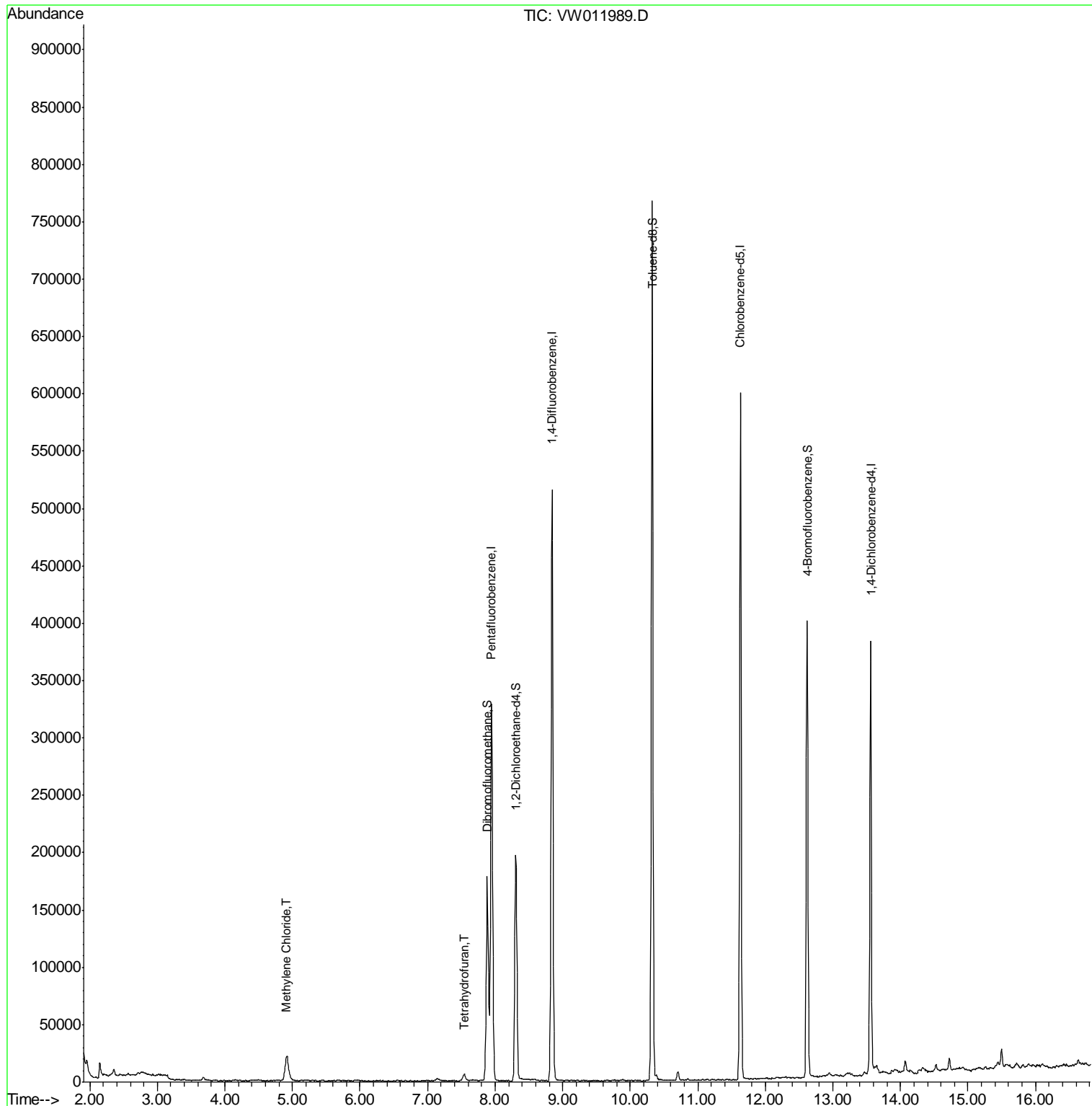
Internal Standards	R.T.	QIon	Response	Conc	Units	Dev(Min)
1) Pentafluorobenzene	7.95	168	243990	50.00	ug/l	0.00
34) 1,4-Difluorobenzene	8.84	114	409697	50.00	ug/l	0.00
63) Chlorobenzene-d5	11.63	117	314204	50.00	ug/l	0.00
72) 1,4-Dichlorobenzene-d4	13.56	152	93928	50.00	ug/l	0.00
System Monitoring Compounds						
33) 1,2-Dichloroethane-d4	8.31	65	153130	54.66	ug/l	0.00
Spiked Amount	50.000		Recovery	=	109.32%	
35) Dibromofluoromethane	7.88	113	125126	54.44	ug/l	0.00
Spiked Amount	50.000		Recovery	=	108.88%	
50) Toluene-d8	10.32	98	479671	50.97	ug/l	0.00
Spiked Amount	50.000		Recovery	=	101.94%	
62) 4-Bromofluorobenzene	12.62	95	131536	39.21	ug/l	0.00
Spiked Amount	50.000		Recovery	=	78.42%	
Target Compounds						
20) Methylene Chloride	4.92	84	17065	5.552	ug/l	91
29) Tetrahydrofuran	7.53	42	5365	8.048	ug/l	97

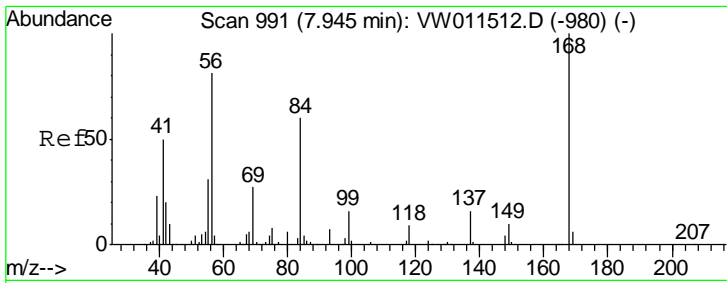
(#) = qualifier out of range (m) = manual integration (+) = signals summed

Data Path : Z:\VOASRV\HPCHEM1\MSVOA W\DATA\VW081919\
 Data File : VW011989.D
 Acq On : 19 Aug 2019 14:14
 Operator : SY/VA
 Sample : K4385-09
 Misc : 6.55G/5ML/MSVOA W/SOIL
 ALS Vial : 14 Sample Multiplier: 1

Instrument :
 MSVOA_W
 ClientSampleId :
 T8-A4-(2)

Quant Time: Aug 19 14:59:24 2019
 Quant Method : Z:\VOASRV\HPCHEM1\MSVOA_W\METHOD\82W072719S.M
 Quant Title : SW846 8260
 QLast Update : Sat Jul 27 00:23:30 2019
 Response via : Initial Calibration

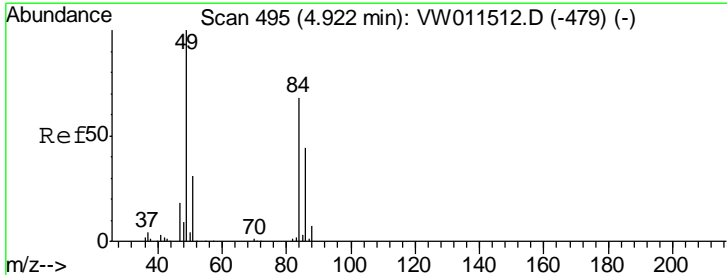
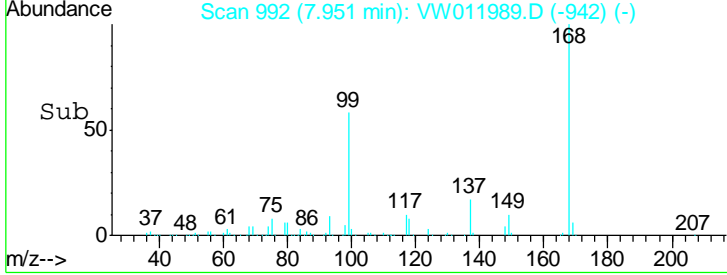
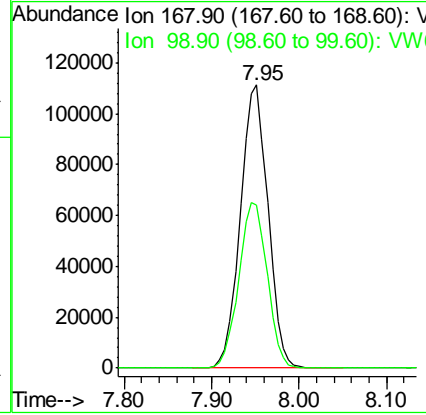
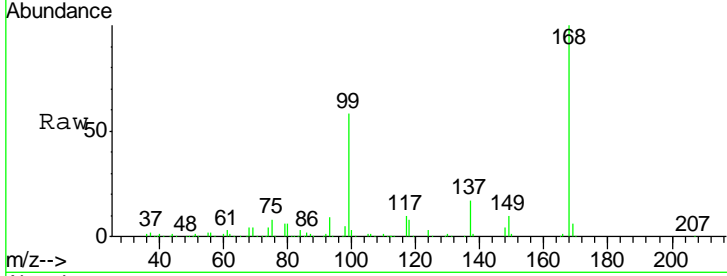




#1
 Pentafluorobenzene
 Concen: 50.000 ug/l
 RT: 7.95 min Scan# 992
 Delta R.T. 0.01 min
 Lab File: VW011989.D
 Acq: 19 Aug 2019 14:14

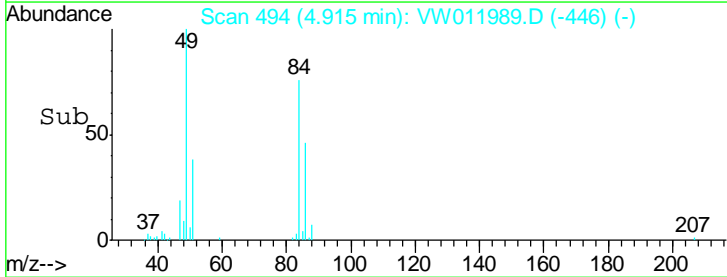
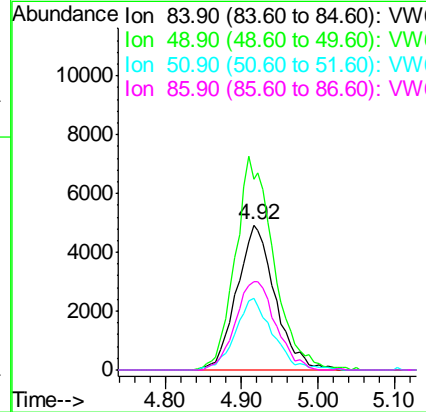
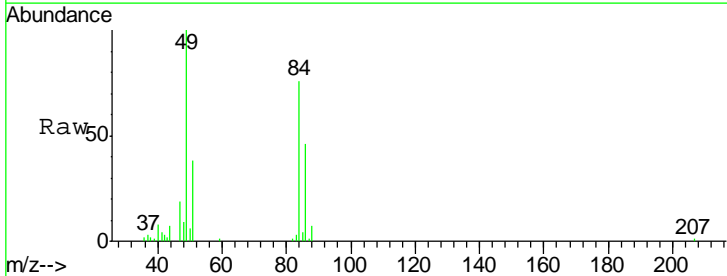
Instrument :
 MSVOA_W
 ClientSampleID :
 T8-A4-(2)

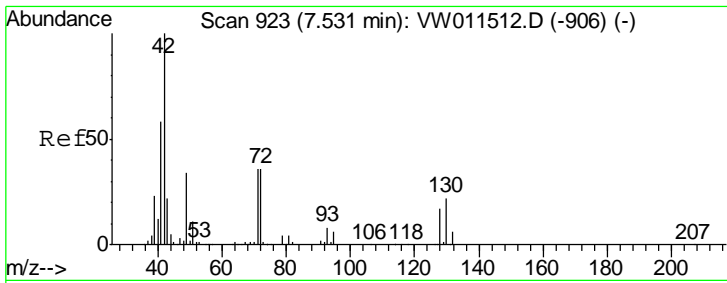
Tgt Ion	Resp	Lower	Upper
168	100		
99	57.7	48.2	72.4



#20
 Methylene Chloride
 Concen: 5.552 ug/l
 RT: 4.92 min Scan# 494
 Delta R.T. -0.01 min
 Lab File: VW011989.D
 Acq: 19 Aug 2019 14:14

Tgt Ion	Resp	Lower	Upper
84	100		
49	131.8	117.8	176.6
51	49.6	37.0	55.4
86	60.8	51.8	77.8

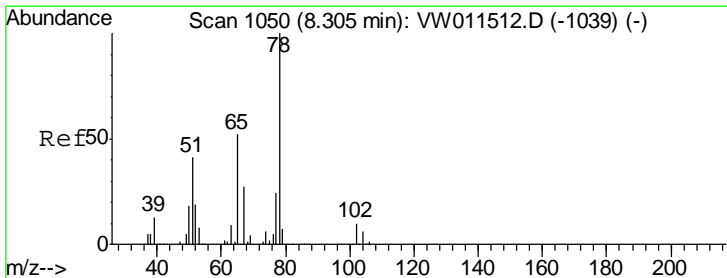
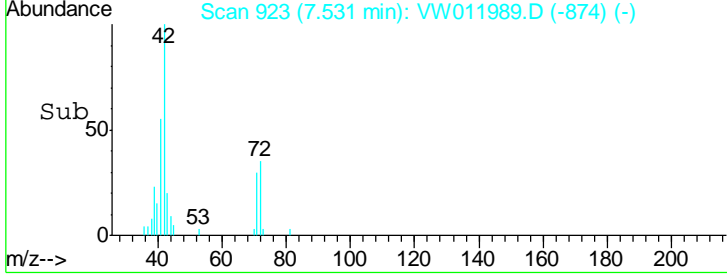
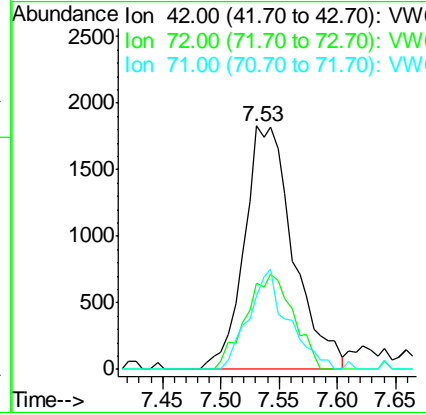
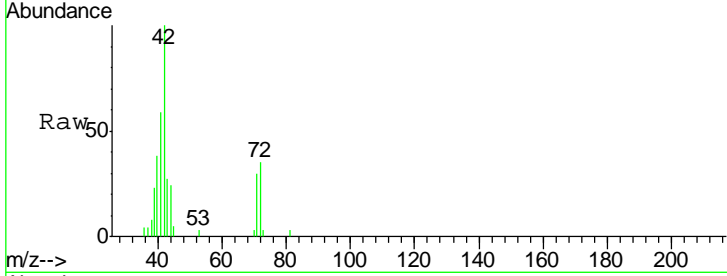




#29
 Tetrahydrofuran
 Concen: 8.048 ug/l
 RT: 7.53 min Scan# 923
 Delta R.T. -0.00 min
 Lab File: VW011989.D
 Acq: 19 Aug 2019 14:14

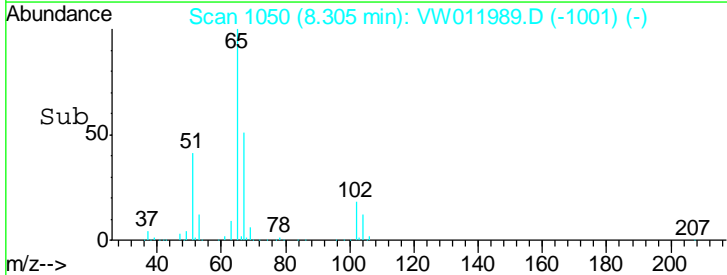
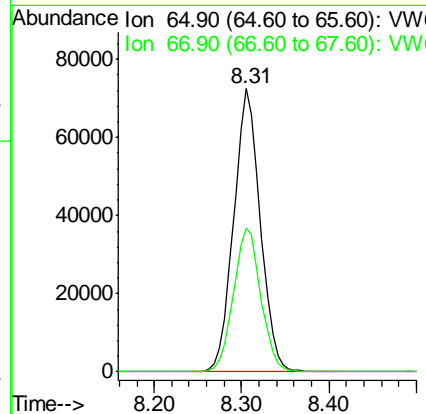
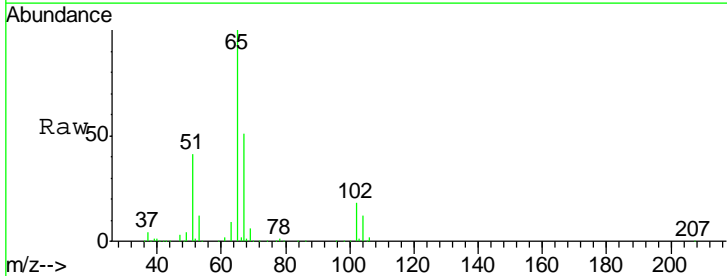
Instrument :
 MSVOA_W
 ClientSampled :
 T8-A4-(2)

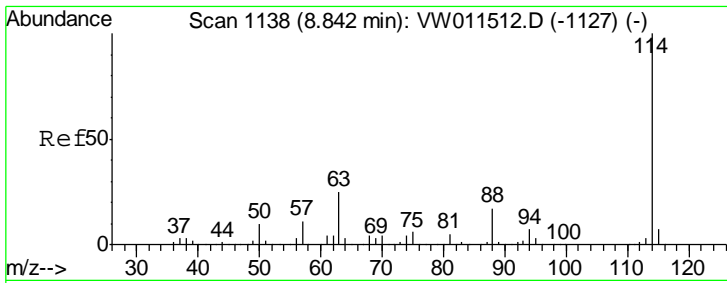
Tgt Ion	Resp	Lower	Upper
42	100		
72	37.6	27.1	40.7
71	32.9	26.2	39.4



#33
 1,2-Dichloroethane-d4
 Concen: 54.656 ug/l
 RT: 8.31 min Scan# 1050
 Delta R.T. -0.00 min
 Lab File: VW011989.D
 Acq: 19 Aug 2019 14:14

Tgt Ion	Resp	Lower	Upper
65	100		
67	52.1	0.0	105.2

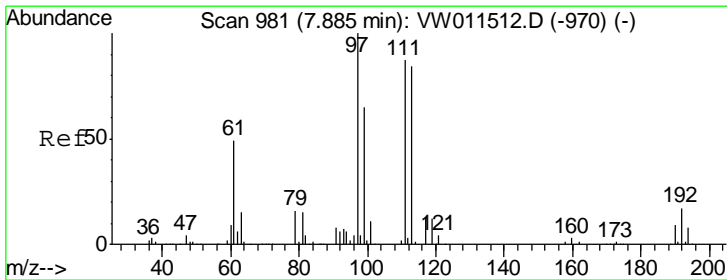
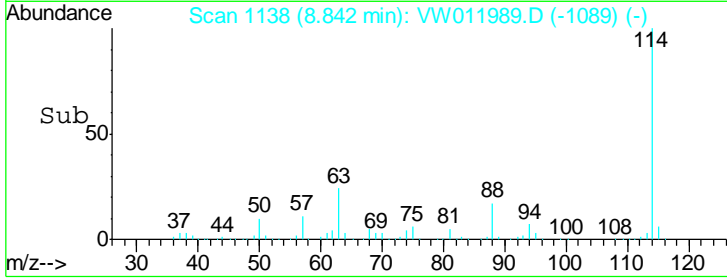
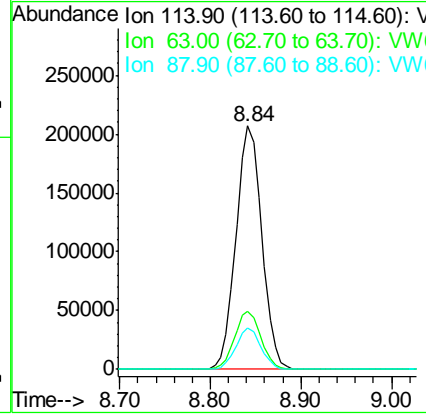
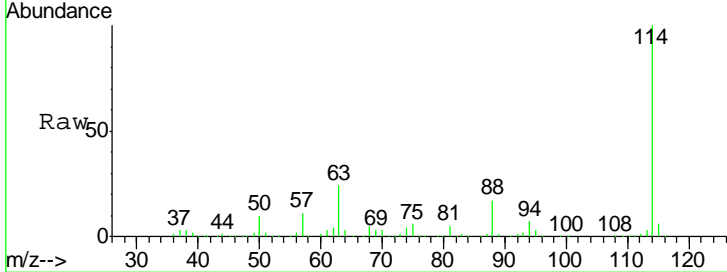




#34
 1,4-Difluorobenzene
 Concen: 50.000 ug/l
 RT: 8.84 min Scan# 1138
 Delta R.T. -0.00 min
 Lab File: VW011989.D
 Acq: 19 Aug 2019 14:14

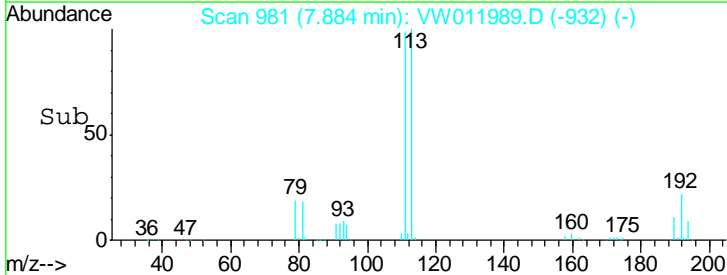
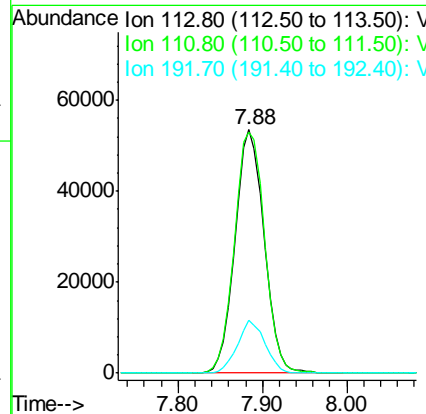
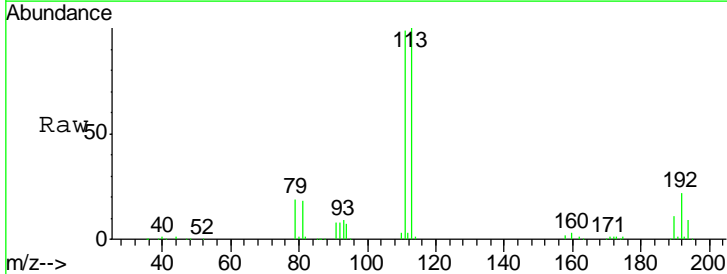
Instrument :
 MSVOA_W
 ClientSampled :
 T8-A4-(2)

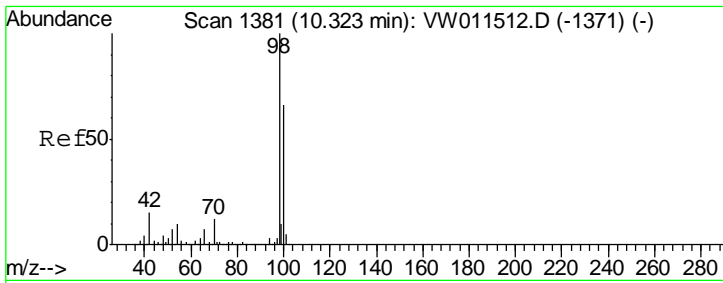
Tgt Ion	Resp	Lower	Upper
114	409697		
63	24.0	0.0	49.2
88	16.9	0.0	33.8



#35
 Dibromofluoromethane
 Concen: 54.439 ug/l
 RT: 7.88 min Scan# 981
 Delta R.T. -0.00 min
 Lab File: VW011989.D
 Acq: 19 Aug 2019 14:14

Tgt Ion	Resp	Lower	Upper
113	125126		
111	102.4	82.7	124.1
192	20.6	16.1	24.1

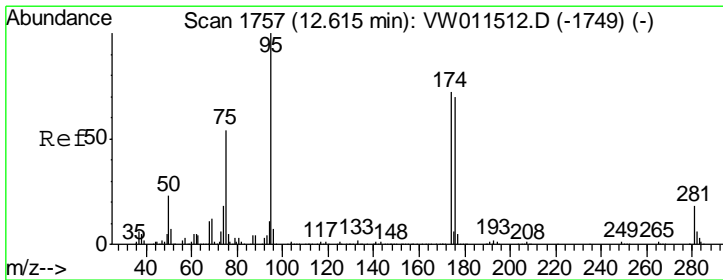
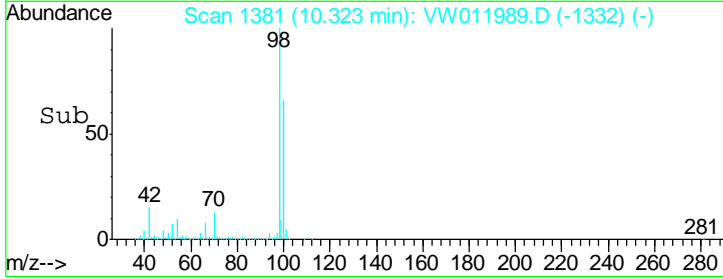
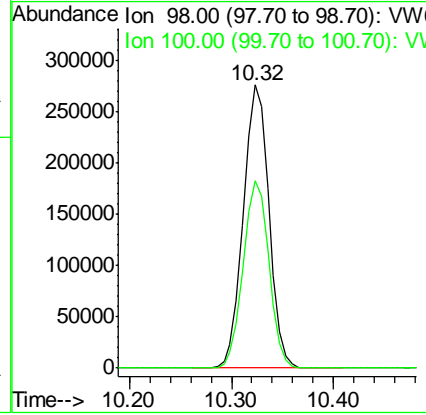
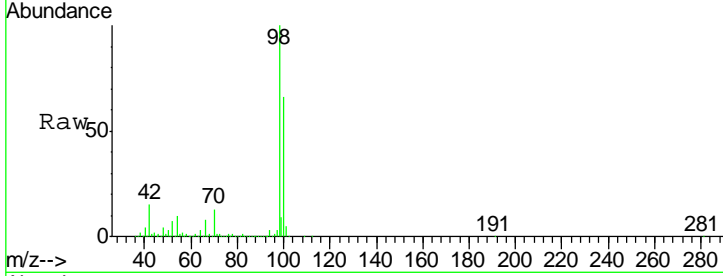




#50
 Toluene-d8
 Concen: 50.971 ug/l
 RT: 10.32 min Scan# 1381
 Delta R.T. -0.00 min
 Lab File: VW011989.D
 Acq: 19 Aug 2019 14:14

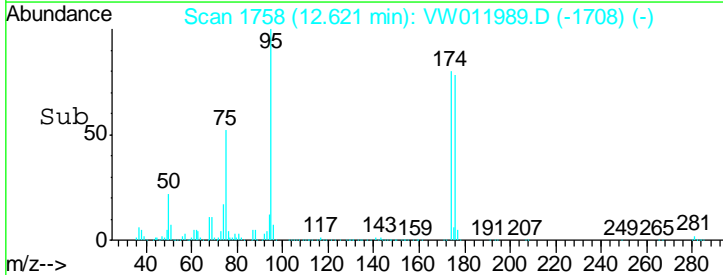
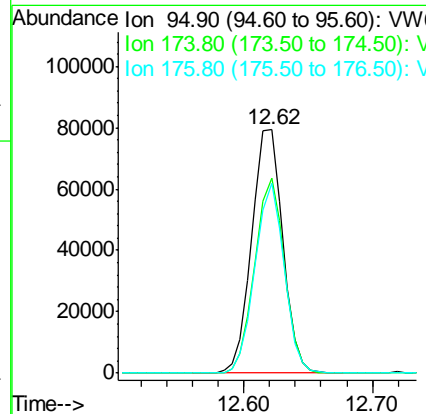
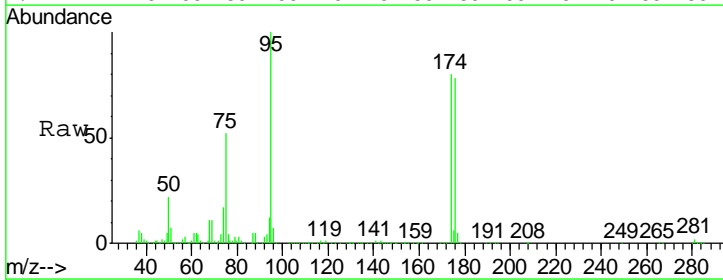
Instrument : MSVOA_W
 ClientSampled : T8-A4-(2)

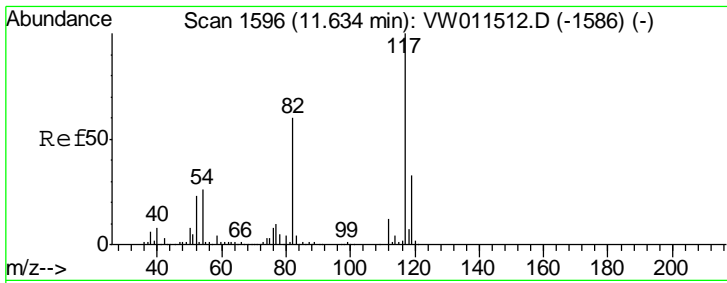
Tgt Ion	Resp	Lower	Upper
98	479671		
100	66.3	52.7	79.1



#62
 4-Bromofluorobenzene
 Concen: 39.205 ug/l
 RT: 12.62 min Scan# 1758
 Delta R.T. 0.01 min
 Lab File: VW011989.D
 Acq: 19 Aug 2019 14:14

Tgt Ion	Resp	Lower	Upper
95	131536		
174	76.8	0.0	150.2
176	73.8	0.0	144.4

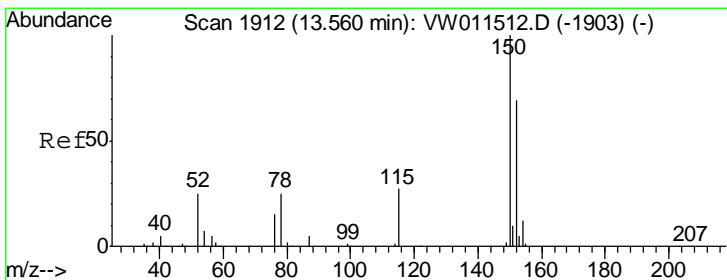
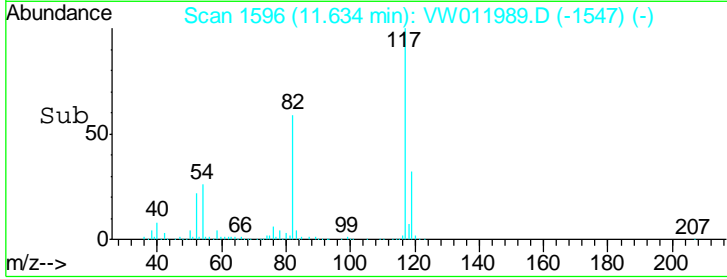
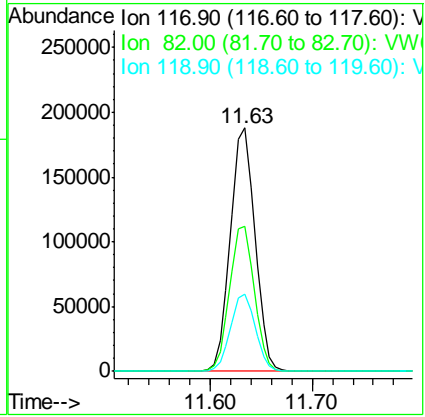
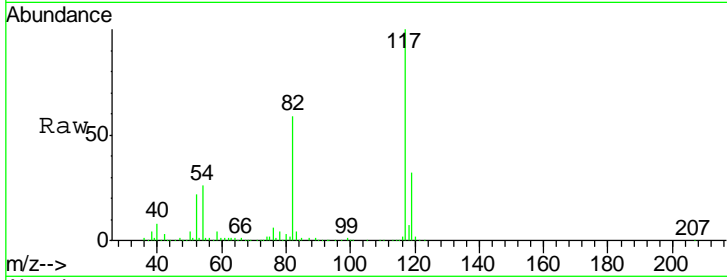




#63
 Chlorobenzene-d5
 Concen: 50.000 ug/l
 RT: 11.63 min Scan# 1596
 Delta R.T. -0.00 min
 Lab File: VW011989.D
 Acq: 19 Aug 2019 14:14

Instrument : MSVOA_W
 ClientSampled : T8-A4-(2)

Tgt Ion	Resp	Lower	Upper
117	100		
82	59.4	47.9	71.9
119	31.7	26.2	39.2



#72
 1,4-Dichlorobenzene-d4
 Concen: 50.000 ug/l
 RT: 13.56 min Scan# 1912
 Delta R.T. -0.00 min
 Lab File: VW011989.D
 Acq: 19 Aug 2019 14:14

Tgt Ion	Resp	Lower	Upper
152	100		
115	59.7	30.5	91.5
150	157.4	0.0	352.6

