

Data Path : Z:\voasrv\HPCHEM1\MSVOA_W\Data\VW081921\
 Data File : VW019815.D
 Acq On : 19 Aug 2021 17:50
 Operator : SY/VA
 Sample : M3472-12
 Misc : 6.82g/10mL/MSVOA_W/SOIL
 ALS Vial : 1 Sample Multiplier: 1

Instrument :
 MSVOA_W
 ClientSampled :

Quant Time: Aug 20 00:47:23 2021
 Quant Method : Z:\voasrv\HPCHEM1\MSVOA_W\Method\SFAMWLM081821SMA.M
 Quant Title : SFAM01.0
 QLast Update : Fri Aug 20 00:38:38 2021
 Response via : Initial Calibration

Compound	R.T.	QIon	Response	Conc	Units	Dev(Min)

Internal Standards						
1) 1,4-Difluorobenzene	8.848	114	357314	25.000	ug/L	0.00
28) Chlorobenzene-d5	11.634	117	281924	25.000	ug/L	0.00
58) 1,4-Dichlorobenzene-d4	13.560	152	92472	25.000	ug/L	0.00
System Monitoring Compounds						
4) Vinyl Chloride-d3	2.361	65	161862	29.237	ug/L	0.00
Spiked Amount	25.000	Range 30 - 150	Recovery =	116.960%		
7) Chloroethane-d5	2.898	69	139621	28.733	ug/L	0.00
Spiked Amount	25.000	Range 30 - 150	Recovery =	114.920%		
11) 1,1-Dichloroethene-d2	4.025	63	170725	17.772	ug/L	0.00
Spiked Amount	25.000	Range 45 - 110	Recovery =	71.080%		
21) 2-Butanone-d5	7.086	46	30513	27.134	ug/L	0.00
Spiked Amount	50.000	Range 20 - 135	Recovery =	54.260%		
24) Chloroform-d	7.653	84	237980	24.218	ug/L	0.00
Spiked Amount	25.000	Range 40 - 150	Recovery =	96.880%		
26) 1,2-Dichloroethane-d4	8.311	65	122369	23.108	ug/L	0.00
Spiked Amount	25.000	Range 70 - 130	Recovery =	92.440%		
32) Benzene-d6	8.281	84	462108	28.748	ug/L	0.00
Spiked Amount	25.000	Range 20 - 135	Recovery =	115.000%		
36) 1,2-Dichloropropane-d6	9.274	67	139823	28.724	ug/L	0.00
Spiked Amount	25.000	Range 70 - 120	Recovery =	114.880%		
41) Toluene-d8	10.323	98	380032	25.798	ug/L	0.00
Spiked Amount	25.000	Range 30 - 130	Recovery =	103.200%		
43) trans-1,3-Dichloroprop...	10.579	79	42277	21.023	ug/L	0.00
Spiked Amount	25.000	Range 30 - 135	Recovery =	84.080%		
47) 2-Hexanone-d5	10.927	63	21294	31.401	ug/L	0.00
Spiked Amount	50.000	Range 20 - 135	Recovery =	62.800%		
56) 1,1,2,2-Tetrachloroeth...	12.695	84	86322	21.788	ug/L	0.00
Spiked Amount	25.000	Range 45 - 120	Recovery =	87.160%		
66) 1,2-Dichlorobenzene-d4	13.853	152	75007	23.647	ug/L	0.00
Spiked Amount	25.000	Range 75 - 120	Recovery =	94.600%		

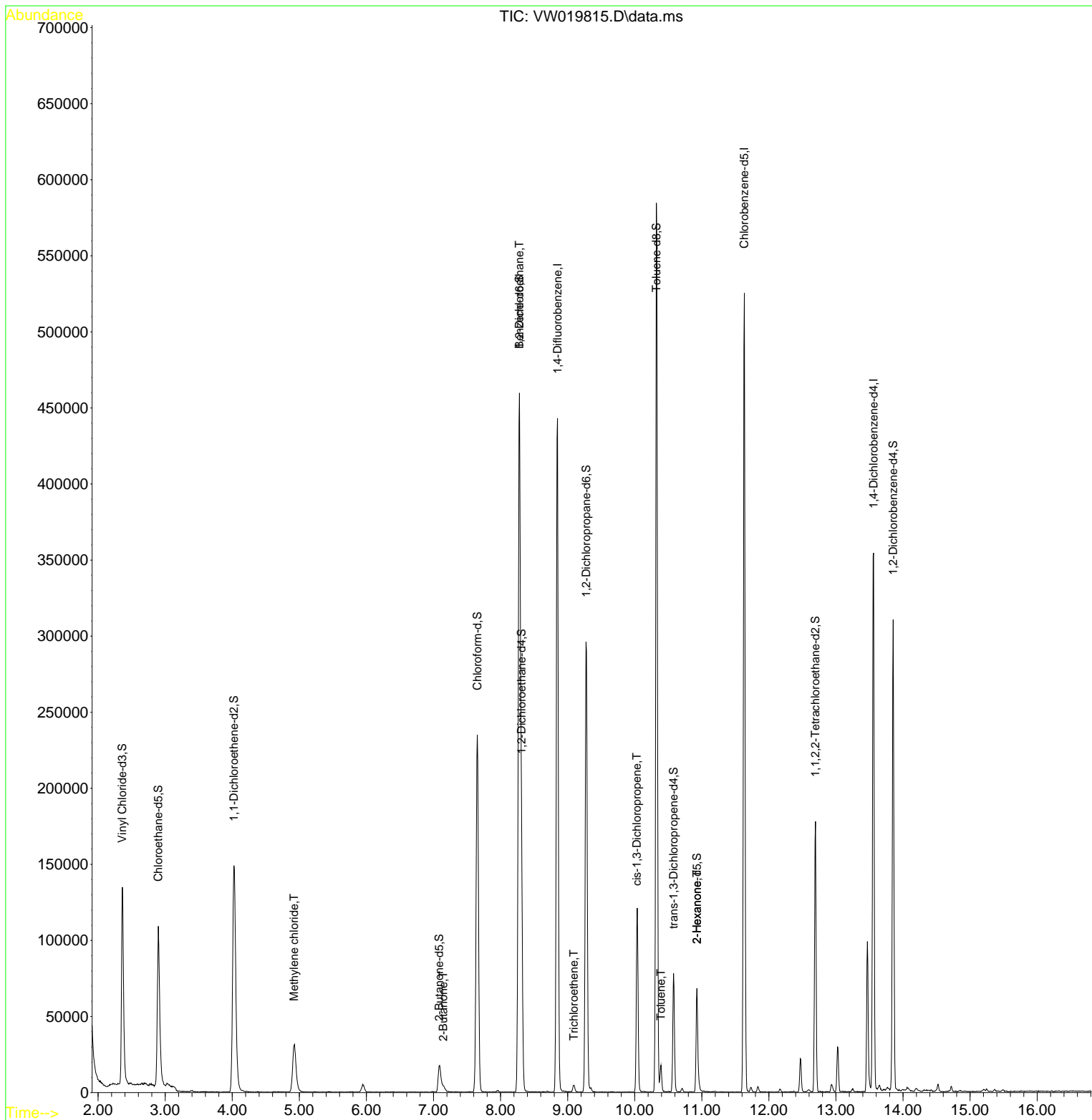
Target Compounds						Qvalue
16) Methylene chloride	4.922	84	27625	4.505	ug/L	94
22) 2-Butanone	7.147	43	5143	4.134	ug/L #	45
27) 1,2-Dichloroethane	8.281	62	2685	0.442	ug/L	97
34) Trichloroethene	9.092	95	1383	0.307	ug/L	94
39) cis-1,3-Dichloropropene	10.030	75	3206	0.508	ug/L #	72
42) Toluene	10.390	91	11941	0.651	ug/L	94
48) 2-Hexanone	10.927	43	2863	1.805	ug/L #	69

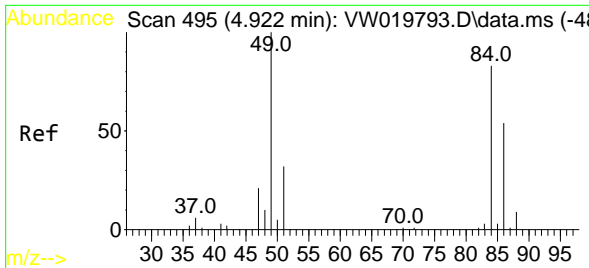
(#) = qualifier out of range (m) = manual integration (+) = signals summed

Data Path : Z:\voasrv\HPCHEM1\MSVOA_W\Data\VW081921\
 Data File : VW019815.D
 Acq On : 19 Aug 2021 17:50
 Operator : SY/VA
 Sample : M3472-12
 Misc : 6.82g/10mL/MSVOA_W/SOIL
 ALS Vial : 1 Sample Multiplier: 1

Instrument :
 MSVOA_W
 ClientSampled :

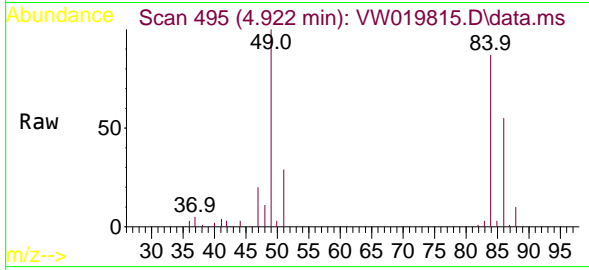
Quant Time: Aug 20 00:47:23 2021
 Quant Method : Z:\voasrv\HPCHEM1\MSVOA_W\Method\SFAMWLM081821SMA.M
 Quant Title : SFAM01.0
 QLast Update : Fri Aug 20 00:38:38 2021
 Response via : Initial Calibration



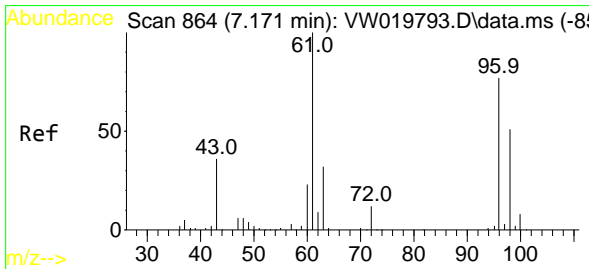
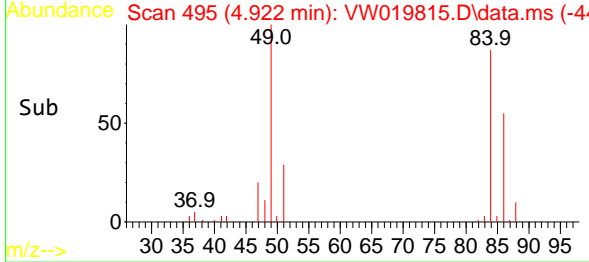
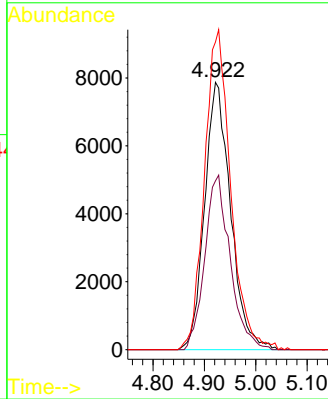


#16
 Methylene chloride
 Concen: 4.505 ug/L
 RT: 4.922 min Scan# 495
 Delta R.T. -0.000 min
 Lab File: VW019815.D
 Acq: 19 Aug 2021 17:50

Instrument :
 MSVOA_W
 ClientSampled :

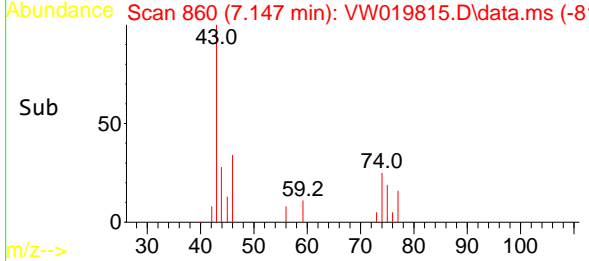
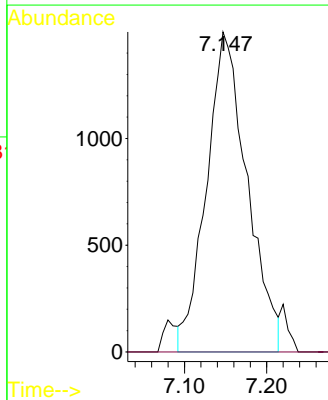
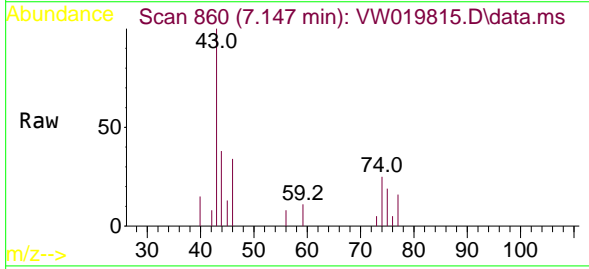


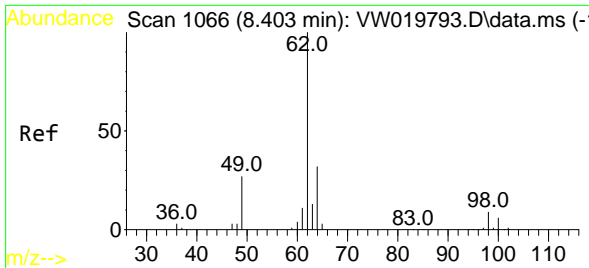
Tgt Ion: 84 Resp: 27625
 Ion Ratio Lower Upper
 84 100
 86 63.1 45.3 84.1
 49 115.1 86.6 160.8



#22
 2-Butanone
 Concen: 4.134 ug/L
 RT: 7.147 min Scan# 860
 Delta R.T. -0.024 min
 Lab File: VW019815.D
 Acq: 19 Aug 2021 17:50

Tgt Ion: 43 Resp: 5143
 Ion Ratio Lower Upper
 43 100
 72 0.0 14.9 44.7#

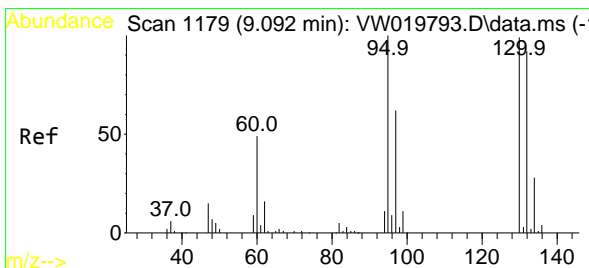
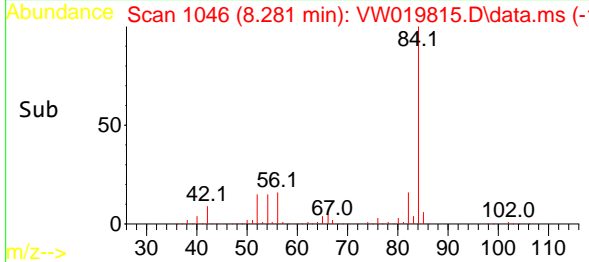
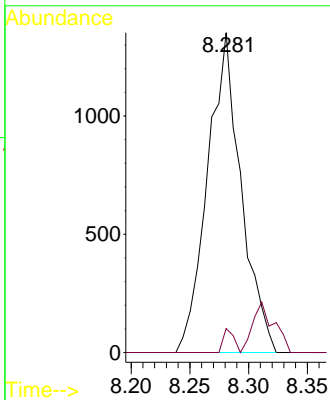
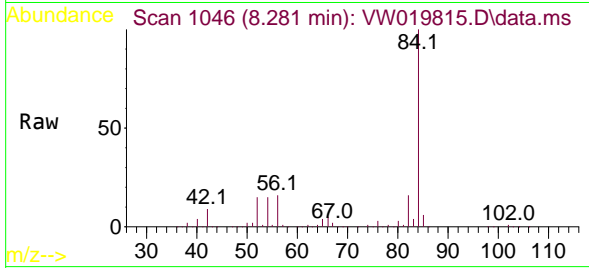




#27
 1,2-Dichloroethane
 Concen: 0.442 ug/L
 RT: 8.281 min Scan# 1046
 Delta R.T. -0.122 min
 Lab File: VW019815.D
 Acq: 19 Aug 2021 17:50

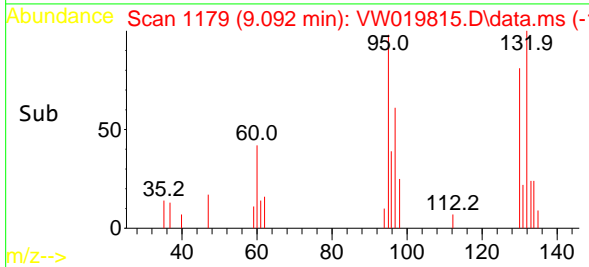
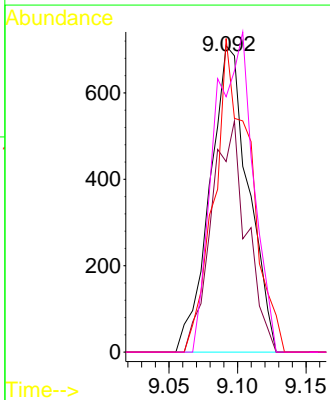
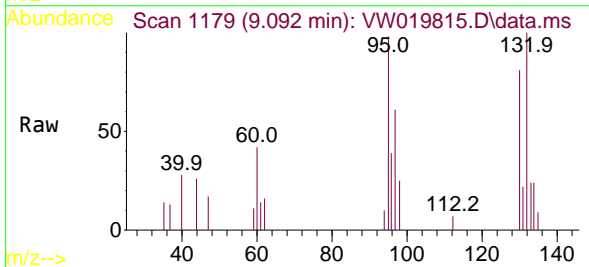
Instrument :
 MSVOA_W
 ClientSampled :

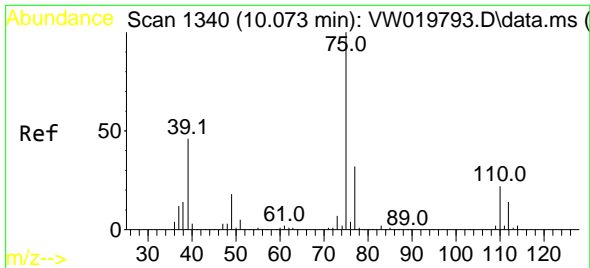
Tgt Ion: 62 Resp: 2685
 Ion Ratio Lower Upper
 62 100
 98 7.5 6.9 10.3



#34
 Trichloroethene
 Concen: 0.307 ug/L
 RT: 9.092 min Scan# 1179
 Delta R.T. -0.000 min
 Lab File: VW019815.D
 Acq: 19 Aug 2021 17:50

Tgt Ion: 95 Resp: 1383
 Ion Ratio Lower Upper
 95 100
 97 62.2 47.3 87.8
 132 102.4 71.0 131.8
 130 83.4 65.1 120.9

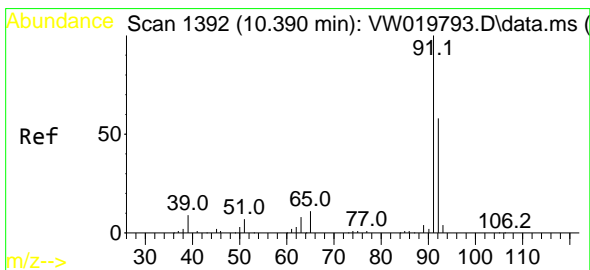
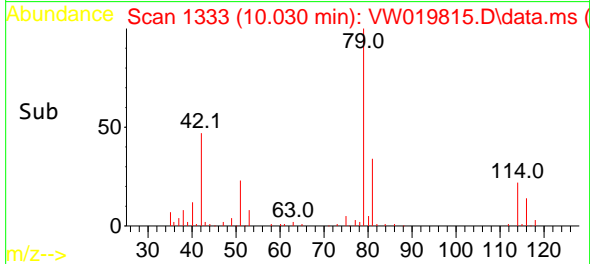
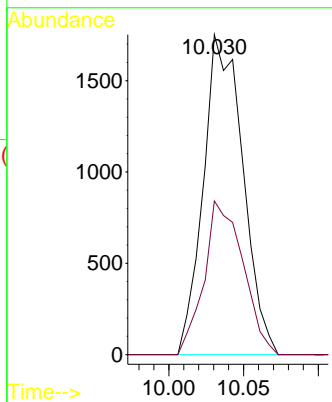
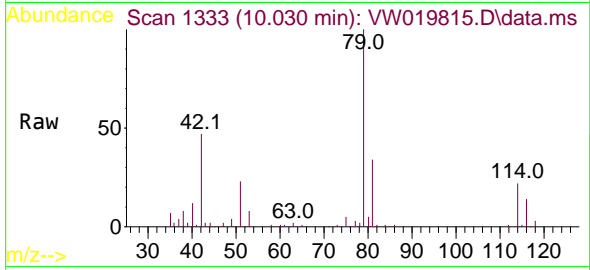




#39
 cis-1,3-Dichloropropene
 Concen: 0.508 ug/L
 RT: 10.030 min Scan# 1333
 Delta R.T. -0.043 min
 Lab File: VW019815.D
 Acq: 19 Aug 2021 17:50

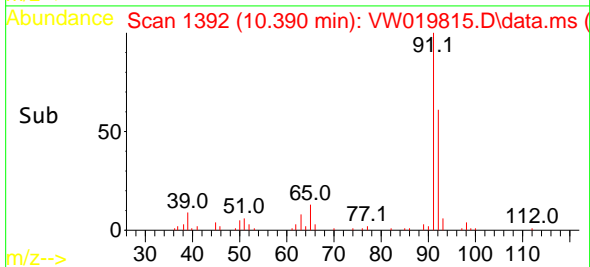
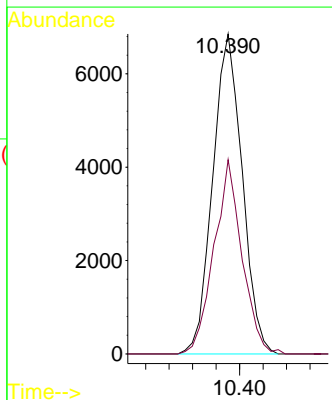
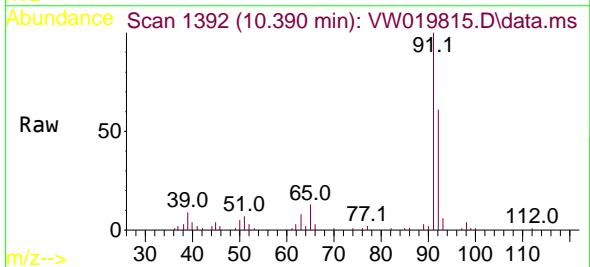
Instrument :
 MSVOA_W
 ClientSampled :

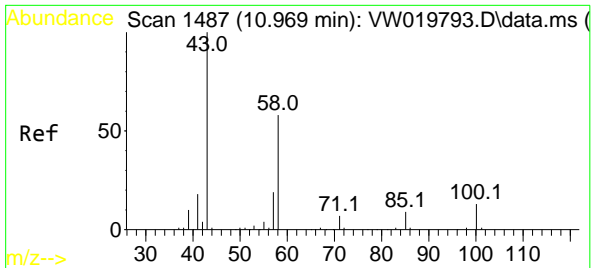
Tgt Ion: 75 Resp: 3206
 Ion Ratio Lower Upper
 75 100
 77 48.1 22.6 42.0#



#42
 Toluene
 Concen: 0.651 ug/L
 RT: 10.390 min Scan# 1392
 Delta R.T. -0.000 min
 Lab File: VW019815.D
 Acq: 19 Aug 2021 17:50

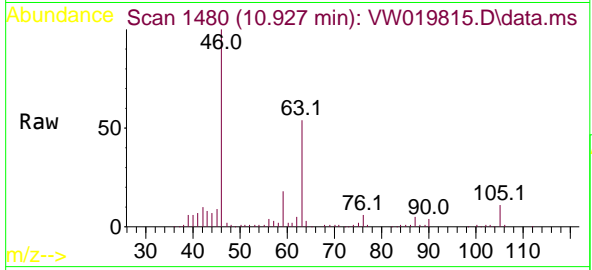
Tgt Ion: 91 Resp: 11941
 Ion Ratio Lower Upper
 91 100
 92 60.7 39.5 73.3





#48
 2-Hexanone
 Concen: 1.805 ug/L
 RT: 10.927 min Scan# 1480
 Delta R.T. -0.043 min
 Lab File: VW019815.D
 Acq: 19 Aug 2021 17:50

Instrument :
 MSVOA_W
 ClientSampled :



Tgt Ion: 43 Resp: 2863

Ion	Ratio	Lower	Upper
43	100		
58	34.4	42.7	64.1#
57	43.4	15.8	23.8#
100	5.3	10.0	15.0#

