

Data Path : Z:\voasrv\HPCHEM1\MSVOA_W\Data\VW081921\
 Data File : VW019801.D
 Acq On : 19 Aug 2021 12:14
 Operator : SY/VA
 Sample : M3458-08RE
 Misc : 5.43g/10mL/MSVOA_W/SOIL
 ALS Vial : 1 Sample Multiplier: 1

Instrument :
 MSVOA_W
 ClientSampleId :
 COASORE

Integration Parameters: LSCINT.P

Integrator: RTE
 Smoothing : OFF Filtering: 5
 Sampling : 1 Min Area: 0 % of largest Peak
 Start Thrs: 0.2 Max Peaks: 100
 Stop Thrs : 0 Peak Location: TOP

If leading or trailing edge < 100 prefer < Baseline drop else tangent >
 Peak separation: 5

Method : Z:\voasrv\HPCHEM1\MSVOA_W\Method\SFAMWLM081821SMA.M
 Title : SFAM01.0

Signal : TIC: VW019801.D\data.ms

peak #	R.T. min	first scan	max scan	last scan	PK TY	peak height	corr. area	corr. % max.	% of total
1	2.361	70	75	83	rVB	30268	52923	23.06%	3.540%
2	2.891	156	162	171	rVB	24061	50114	21.84%	3.353%
3	3.361	237	239	243	rBV2	269	288	0.13%	0.019%
4	3.391	243	244	248	rBV	207	265	0.12%	0.018%
5	3.665	285	289	291	rBV2	175	257	0.11%	0.017%
6	3.818	312	314	315	rBV2	233	197	0.09%	0.013%
7	3.891	324	326	330	rBV3	213	302	0.13%	0.020%
8	4.025	338	348	358	rVB2	34678	89755	39.12%	6.004%
9	4.135	364	366	369	rBV2	321	323	0.14%	0.022%
10	4.318	394	396	398	rVB2	210	125	0.05%	0.008%
11	4.702	456	459	461	rBV	258	275	0.12%	0.018%
12	4.763	466	469	470	rBV2	283	234	0.10%	0.016%
13	4.781	470	472	474	rBV2	180	129	0.06%	0.009%
14	4.830	478	480	481	rBV2	201	163	0.07%	0.011%
15	4.921	487	495	504	rVB3	2058	5713	2.49%	0.382%
16	5.068	516	519	522	rBV2	274	416	0.18%	0.028%
17	5.189	535	539	541	rBV2	301	354	0.15%	0.024%
18	5.470	584	585	588	rBV2	253	223	0.10%	0.015%
19	5.519	591	593	595	rVB	254	133	0.06%	0.009%
20	5.677	617	619	620	rBV	140	139	0.06%	0.009%
21	5.939	660	662	663	rBV	337	229	0.10%	0.015%
22	5.958	663	665	666	rVB2	392	286	0.12%	0.019%
23	6.025	674	676	680	rBV2	145	170	0.07%	0.011%
24	6.104	686	689	690	rBV2	186	197	0.09%	0.013%
25	6.128	692	693	695	rBV	132	134	0.06%	0.009%
26	6.323	723	725	729	rBV	160	178	0.08%	0.012%
27	6.878	814	816	817	rBV	191	129	0.06%	0.009%
28	7.092	844	851	865	rBV2	3760	11856	5.17%	0.793%
29	7.317	887	888	890	rBV	271	169	0.07%	0.011%
30	7.421	903	905	906	rBV	154	125	0.05%	0.008%
31	7.451	908	910	913	rVB	199	153	0.07%	0.010%
32	7.524	919	922	924	rBV	210	195	0.08%	0.013%
33	7.652	934	943	955	rVB2	42296	104398	45.50%	6.984%
34	7.774	961	963	964	rBV	225	149	0.06%	0.010%
35	8.049	1006	1008	1011	rVV2	193	183	0.08%	0.012%
36	8.073	1011	1012	1015	rVV	171	159	0.07%	0.011%

Data Path : Z:\voasrv\HPCHEM1\MSVOA_W\Data\VW081921\
 Data File : VW019801.D
 Acq On : 19 Aug 2021 12:14
 Operator : SY/VA
 Sample : M3458-08RE
 Misc : 5.43g/10mL/MSVOA_W/SOIL
 ALS Vial : 1 Sample Multiplier: 1

Instrument :
 MSVOA_W
 ClientSampleId :
 COASORE

Integration Parameters: LSCINT.P

Integrator: RTE
 Smoothing : OFF Filtering: 5
 Sampling : 1 Min Area: 0 % of largest Peak
 Start Thrs: 0.2 Max Peaks: 100
 Stop Thrs : 0 Peak Location: TOP

If leading or trailing edge < 100 prefer < Baseline drop else tangent >
 Peak separation: 5

Method : Z:\voasrv\HPCHEM1\MSVOA_W\Method\SFAMWLM081821SMA.M
 Title : SFAM01.0

37	8.195	1030	1032	1034	rVB	205	126	0.05%	0.008%
38	8.280	1036	1046	1064	rBV2	76024	229457	100.00%	15.350%
39	8.488	1078	1080	1081	rBV2	225	157	0.07%	0.011%
40	8.585	1094	1096	1099	rBV	272	190	0.08%	0.013%
41	8.640	1102	1105	1109	rBV2	160	252	0.11%	0.017%
42	8.786	1127	1129	1131	rBV2	213	276	0.12%	0.018%
43	8.847	1131	1139	1150	rBV	68493	133681	58.26%	8.943%
44	9.012	1164	1166	1167	rBV	214	141	0.06%	0.009%
45	9.030	1167	1169	1172	rVB2	212	228	0.10%	0.015%
46	9.055	1172	1173	1175	rBV	238	194	0.08%	0.013%
47	9.085	1175	1178	1180	rBV	235	221	0.10%	0.015%
48	9.152	1187	1189	1191	rVB2	261	195	0.08%	0.013%
49	9.213	1197	1199	1202	rBV	136	191	0.08%	0.013%
50	9.280	1202	1210	1219	rVV	54800	112996	49.24%	7.559%
51	9.359	1221	1223	1226	rBV2	200	212	0.09%	0.014%
52	9.390	1226	1228	1230	rBV2	130	136	0.06%	0.009%
53	9.573	1255	1258	1260	rBV2	272	255	0.11%	0.017%
54	9.695	1277	1278	1281	rBV	119	123	0.05%	0.008%
55	9.920	1314	1315	1318	rVB	202	155	0.07%	0.010%
56	10.036	1328	1334	1343	rVB	22941	42828	18.66%	2.865%
57	10.329	1374	1382	1390	rBV	91698	161632	70.44%	10.813%
58	10.475	1404	1406	1409	rBV2	288	237	0.10%	0.016%
59	10.524	1412	1414	1415	rVB	361	263	0.11%	0.018%
60	10.579	1415	1423	1433	rBV	15832	27194	11.85%	1.819%
61	10.652	1433	1435	1436	rBV	172	125	0.05%	0.008%
62	10.701	1440	1443	1449	rVB3	692	1221	0.53%	0.082%
63	10.926	1474	1480	1488	rBV	12461	21813	9.51%	1.459%
64	11.060	1499	1502	1503	rBV2	191	168	0.07%	0.011%
65	11.310	1542	1543	1545	rVB2	321	157	0.07%	0.011%
66	11.341	1545	1548	1551	rBV	270	366	0.16%	0.024%
67	11.469	1567	1569	1571	rVB2	247	183	0.08%	0.012%
68	11.493	1571	1573	1574	rBV	202	178	0.08%	0.012%
69	11.633	1589	1596	1604	rVV	94133	157830	68.78%	10.558%
70	11.835	1627	1629	1632	rBV2	218	168	0.07%	0.011%
71	11.902	1636	1640	1644	rBV2	194	336	0.15%	0.022%
72	12.322	1707	1709	1712	rVB2	285	342	0.15%	0.023%
73	12.353	1712	1714	1715	rBV2	203	209	0.09%	0.014%
74	12.493	1734	1737	1739	rBV2	282	252	0.11%	0.017%
75	12.591	1752	1753	1754	rBV	248	143	0.06%	0.010%
76	12.694	1763	1770	1777	rBV	38268	63099	27.50%	4.221%

Data Path : Z:\voasrv\HPCHEM1\MSVOA_W\Data\VW081921\
 Data File : VW019801.D
 Acq On : 19 Aug 2021 12:14
 Operator : SY/VA
 Sample : M3458-08RE
 Misc : 5.43g/10mL/MSVOA_W/SOIL
 ALS Vial : 1 Sample Multiplier: 1

Instrument :
 MSVOA_W
 ClientSampleId :
 COASORE

Integration Parameters: LSCINT.P
 Integrator: RTE
 Smoothing : OFF Filtering: 5
 Sampling : 1 Min Area: 0 % of largest Peak
 Start Thrs: 0.2 Max Peaks: 100
 Stop Thrs : 0 Peak Location: TOP

If leading or trailing edge < 100 prefer < Baseline drop else tangent >
 Peak separation: 5

Method : Z:\voasrv\HPCHEM1\MSVOA_W\Method\SFAMWLM081821SMA.M
 Title : SFAM01.0

77	12.755	1778	1780	1786	rVB3	349	570	0.25%	0.038%
78	12.847	1791	1795	1796	rBV2	228	224	0.10%	0.015%
79	12.926	1805	1808	1811	rBV2	364	415	0.18%	0.028%
80	12.993	1817	1819	1821	rVB	244	180	0.08%	0.012%
81	13.109	1836	1838	1839	rBV	176	125	0.05%	0.008%
82	13.145	1842	1844	1845	rBV2	191	151	0.07%	0.010%
83	13.249	1859	1861	1864	rBV2	233	230	0.10%	0.015%
84	13.334	1871	1875	1878	rBV2	191	245	0.11%	0.016%
85	13.560	1905	1912	1923	rVB	65521	108530	47.30%	7.260%
86	13.645	1923	1926	1930	rBV4	689	1051	0.46%	0.070%
87	13.853	1953	1960	1967	rBV	59796	98340	42.86%	6.579%
88	14.060	1992	1994	2000	rVB3	655	1144	0.50%	0.077%
89	14.371	2043	2045	2046	rBV	240	172	0.07%	0.012%
90	14.493	2062	2065	2066	rBV2	261	210	0.09%	0.014%
91	14.529	2067	2071	2074	rVB3	927	1386	0.60%	0.093%
92	14.609	2081	2084	2086	rBV3	276	340	0.15%	0.023%
93	14.852	2122	2124	2126	rBV	357	267	0.12%	0.018%
94	15.035	2152	2154	2155	rBV	311	173	0.08%	0.012%
95	15.163	2173	2175	2178	rBV2	419	525	0.23%	0.035%
96	15.194	2178	2180	2181	rVV2	307	148	0.06%	0.010%
97	15.779	2274	2276	2277	rBV2	456	308	0.13%	0.021%
98	15.797	2277	2279	2281	rBV2	326	334	0.15%	0.022%
99	16.377	2373	2374	2375	rBV	382	167	0.07%	0.011%
100	16.700	2425	2427	2431	rBV2	454	618	0.27%	0.041%

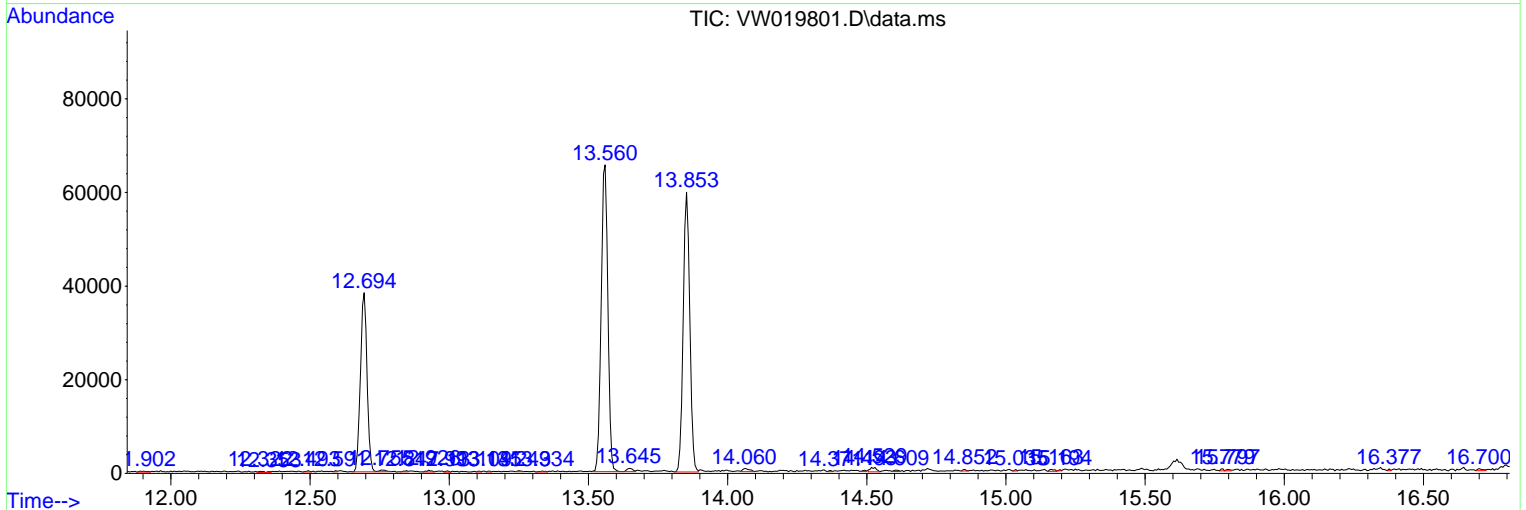
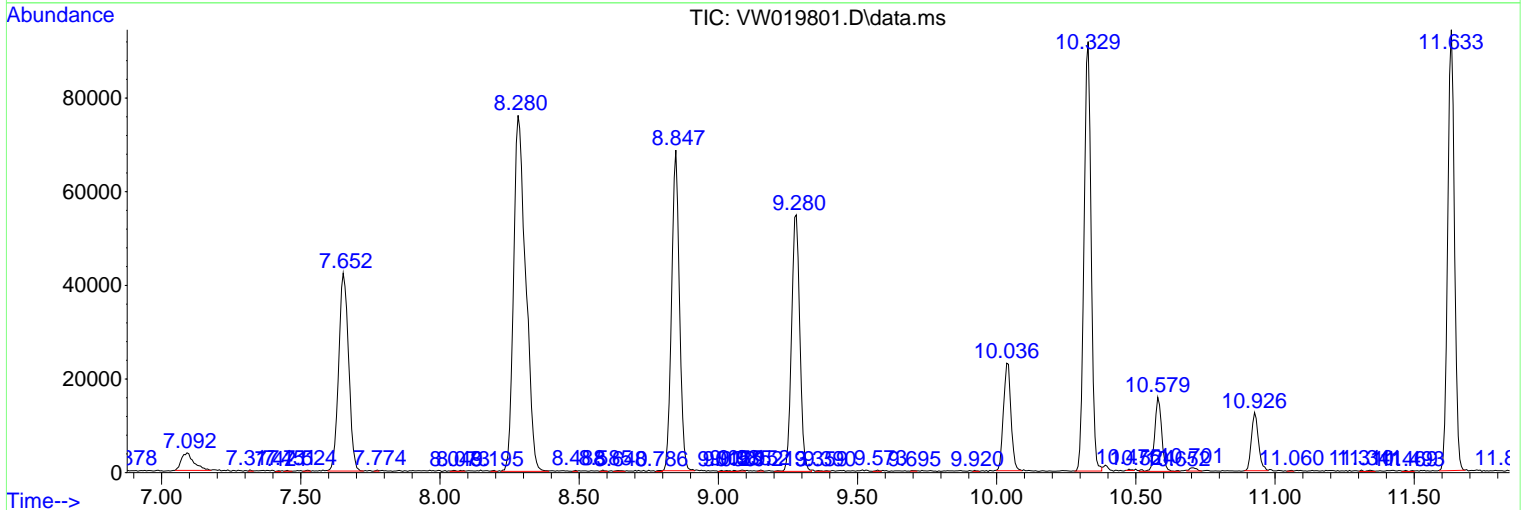
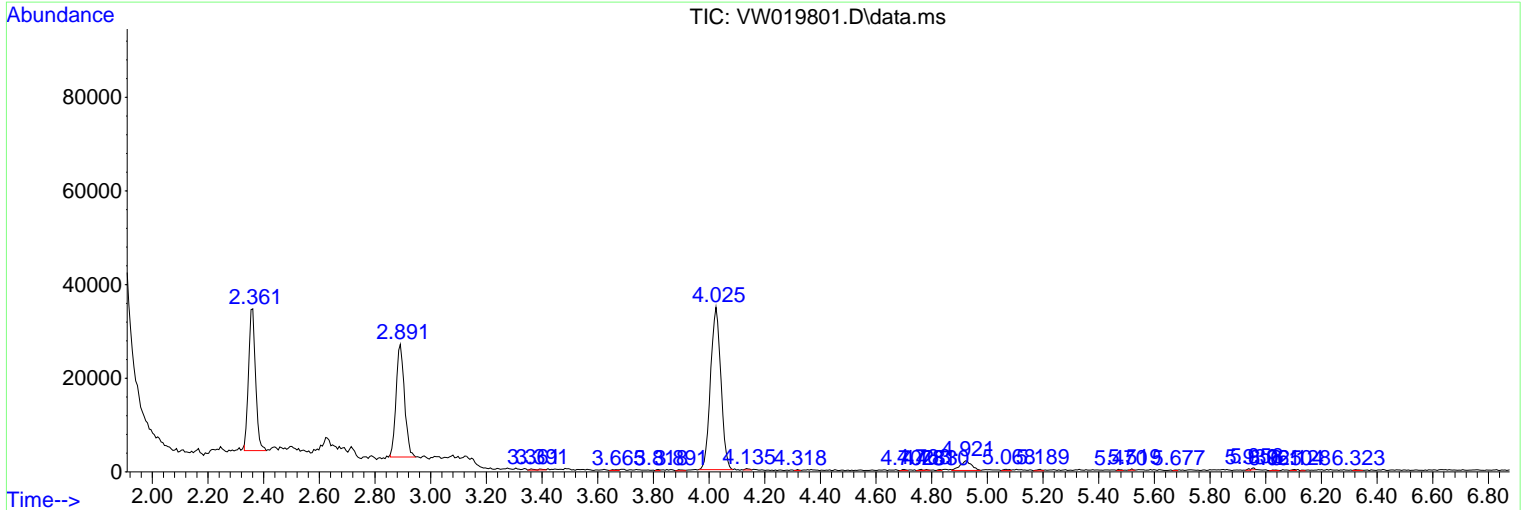
Sum of corrected areas: 1494821

Data Path : Z:\voasrv\HPCHEM1\MSVOA_W\Data\VW081921\
 Data File : VW019801.D
 Acq On : 19 Aug 2021 12:14
 Operator : SY/VA
 Sample : M3458-08RE
 Misc : 5.43g/10mL/MSVOA_W/SOIL
 ALS Vial : 1 Sample Multiplier: 1

Instrument :
 MSVOA_W
Client Sampled :
 COASORE

Quant Method : Z:\voasrv\HPCHEM1\MSVOA_W\Method\SFAMWLM081821SMA.M
 Quant Title : SFAM01.0

TIC Library : C:\Database\NIST20.L
 TIC Integration Parameters: LSCINT.P



Data Path : Z:\voasrv\HPCHEM1\MSVOA_W\Data\VW081921\
Data File : VW019801.D
Acq On : 19 Aug 2021 12:14
Operator : SY/VA
Sample : M3458-08RE
Misc : 5.43g/10mL/MSVOA_W/SOIL
ALS Vial : 1 Sample Multiplier: 1

Instrument :
MSVOA_W
ClientSampleId :
COASORE

Quant Method : Z:\voasrv\HPCHEM1\MSVOA_W\Method\SFAMWLM081821SMA.M
Quant Title : SFAM01.0

TIC Library : C:\Database\NIST20.L
TIC Integration Parameters: LSCINT.P

No Library Search Compounds Detected

Data Path : Z:\voasrv\HPCHEM1\MSVOA_W\Data\VW081921\
Data File : VW019801.D
Acq On : 19 Aug 2021 12:14
Operator : SY/VA
Sample : M3458-08RE
Misc : 5.43g/10mL/MSVOA_W/SOIL
ALS Vial : 1 Sample Multiplier: 1

Instrument :
MSVOA_W
ClientSampleId :
COASORE

Quant Method : Z:\voasrv\HPCHEM1\MSVOA_W\Method\SFAMWLM081821SMA.M
Quant Title : SFAM01.0

TIC Library : C:\Database\NIST20.L
TIC Integration Parameters: LSCINT.P

TIC Top Hit name	RT	EstConc	Units	Response	--Internal Standard--		
					#	RT	Resp Conc
