

Data Path : Z:\VOASRV\HPCHEM1\MSVOA W\DATA\VW082018\
 Data File : VW004795.D
 Acq On : 20 Aug 2018 17:02
 Operator : SY/AP
 Sample : J4538-04
 Misc : 15.59G/5ML/MSVOA W/SOIL
 ALS Vial : 13 Sample Multiplier: 1

Instrument :
 MSVOA_W
 ClientSampleId :
 VSS4

Integration Parameters: RTEINT.P
 Integrator: RTE
 Smoothing : ON Filtering: 5
 Sampling : 1 Min Area: 3 % of largest Peak
 Start Thrs: 0.2 Max Peaks: 100
 Stop Thrs : 0 Peak Location: TOP

If leading or trailing edge < 100 prefer < Baseline drop else tangent >
 Peak separation: 5

Method : Z:\VOASRV\HPCHEM1\MSVOA_W\METHOD\82W081918S.M
 Title : SW846 8260

Signal : TIC

peak #	R.T. min	first scan	max scan	last scan	PK TY	peak height	corr. area	corr. % max.	% of total
1	1.813	28	37	71	rVB	11862111	28616036	100.00%	70.762%
2	7.891	1023	1034	1039	rBV	411833	1010841	3.53%	2.500%
3	7.952	1039	1044	1056	rVB	682922	1468678	5.13%	3.632%
4	8.312	1091	1103	1116	rVB	441177	977231	3.41%	2.416%
5	8.848	1180	1191	1201	rBV	997562	1998456	6.98%	4.942%
6	10.330	1425	1434	1443	rBV	1270964	2216704	7.75%	5.481%
7	11.634	1640	1648	1662	rBV	1146209	1932513	6.75%	4.779%
8	12.622	1803	1810	1823	rBV	648515	1082944	3.78%	2.678%
9	13.567	1958	1965	1974	rBV	704669	1136627	3.97%	2.811%

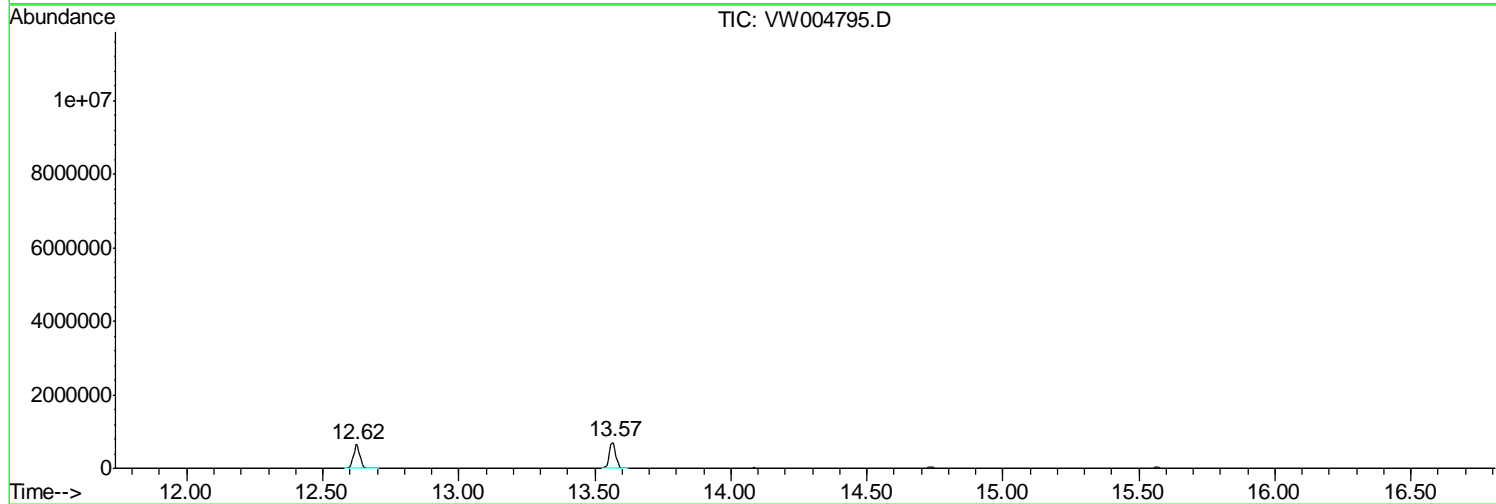
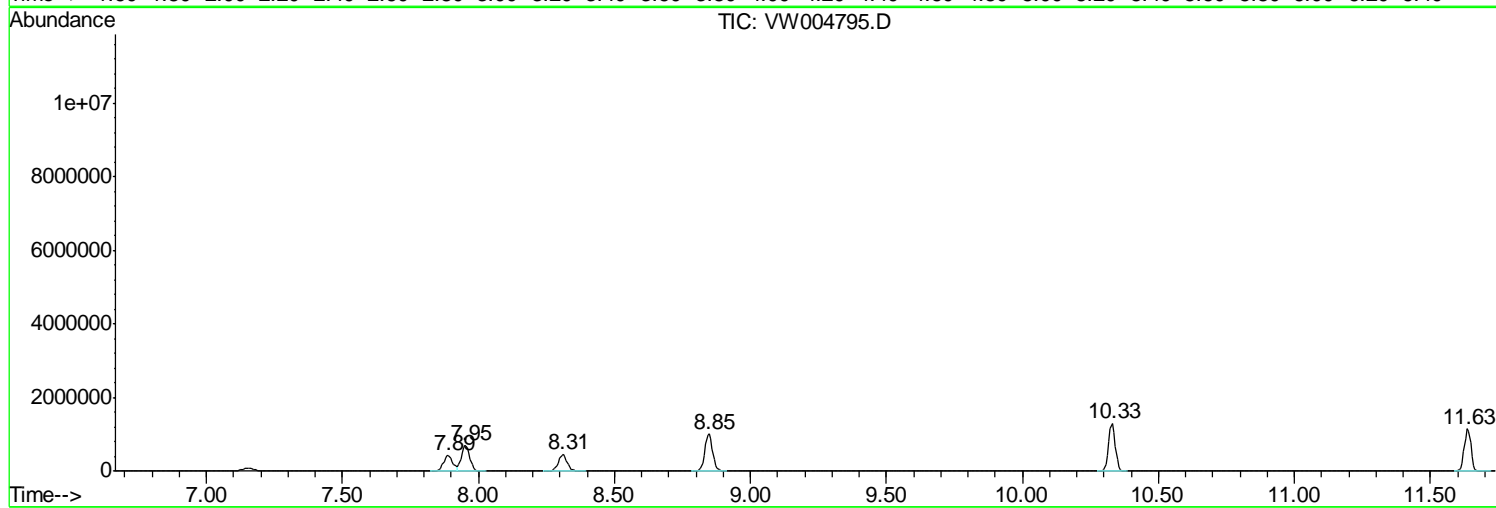
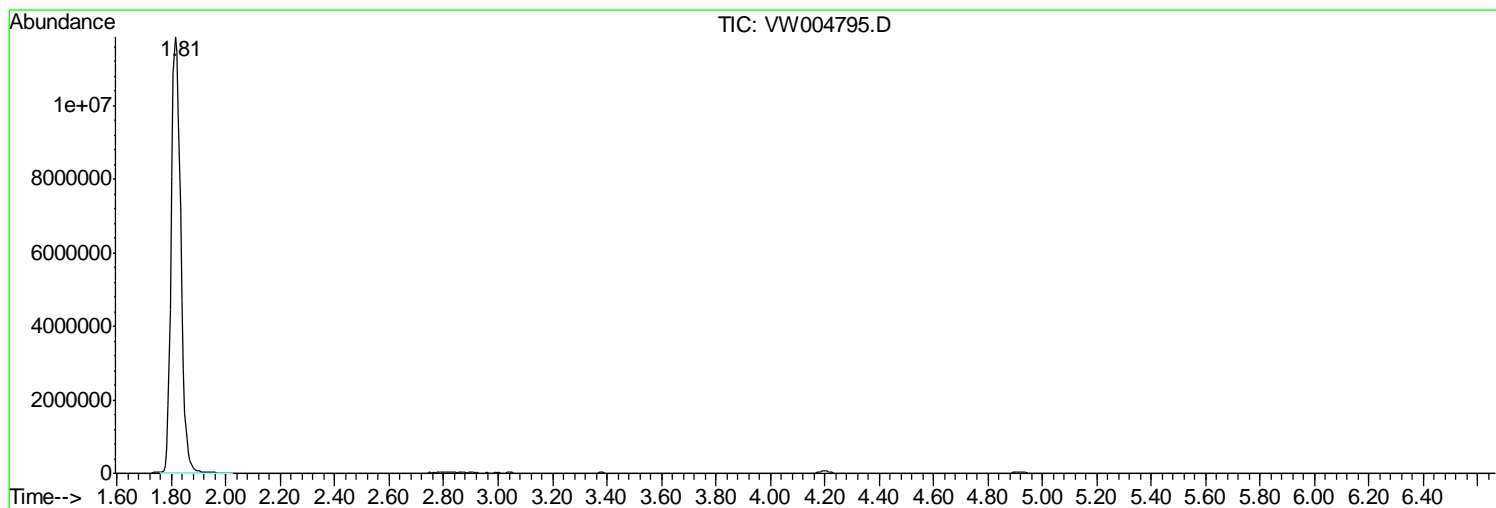
Sum of corrected areas: 40440030

Data Path : Z:\VOASRV\HPCHEM1\MSVOA W\DATA\VW082018\
Data File : VW004795.D
Acq On : 20 Aug 2018 17:02
Operator : SY/AP
Sample : J4538-04
Misc : 15.59G/5ML/MSVOA W/SOIL
ALS Vial : 13 Sample Multiplier: 1

Instrument :
MSVOA_W
ClientSampleId :
VSS4

Quant Method : Z:\VOASRV\HPCHEM1\MSVOA_W\METHOD\82W081918S.M
Quant Title : SW846 8260

TIC Library : C:\DATABASE\NIST11.L
TIC Integration Parameters: LSCINT.P



Data Path : Z:\VOASRV\HPCHEM1\MSVOA_W\DATA\VW082018\
Data File : VW004795.D
Acq On : 20 Aug 2018 17:02
Operator : SY/AP
Sample : J4538-04
Misc : 15.59G/5ML/MSVOA_W/SOIL
ALS Vial : 13 Sample Multiplier: 1

Instrument :
MSVOA_W
ClientSampleId :
VSS4

Quant Method : Z:\VOASRV\HPCHEM1\MSVOA_W\METHOD\82W081918S.M
Quant Title : SW846 8260

TIC Library : C:\DATABASE\NIST11.L
TIC Integration Parameters: LSCINT.P

No Library Search Compounds Detected

Data Path : Z:\VOASRV\HPCHEM1\MSVOA_W\DATA\VW082018\
Data File : VW004795.D
Acq On : 20 Aug 2018 17:02
Operator : SY/AP
Sample : J4538-04
Misc : 15.59G/5ML/MSVOA_W/SOIL
ALS Vial : 13 Sample Multiplier: 1

Instrument :
MSVOA_W
ClientSampleId :
VSS4

Quant Method : Z:\VOASRV\HPCHEM1\MSVOA_W\METHOD\82W081918S.M
Quant Title : SW846 8260

TIC Library : C:\DATABASE\NIST11.L
TIC Integration Parameters: LSCINT.P

TIC Top Hit name	RT	EstConc	Units	Response	--Internal Standard--			
					#	RT	Resp	Conc
