

Data Path : Z:\VOASRV\HPCHEM1\MSVOA\_W\DATA\VW082019\  
 Data File : VW012042.D  
 Acq On : 20 Aug 2019 20:56  
 Operator : SY/VA  
 Sample : K4387-05  
 Misc : 4.67G/5ML/MSVOA\_W/SOIL  
 ALS Vial : 26 Sample Multiplier: 1

Instrument :  
 MSVOA\_W  
 ClientSampleId :  
 T6-C-(2)

Quant Time: Aug 21 01:36:28 2019  
 Quant Method : Z:\VOASRV\HPCHEM1\MSVOA\_W\METHOD\82W072719S.M  
 Quant Title : SW846 8260  
 QLast Update : Sat Jul 27 00:23:30 2019  
 Response via : Initial Calibration

Internal Standards	R.T.	QIon	Response	Conc	Units	Dev(Min)
1) Pentafluorobenzene	7.95	168	256104	50.00	ug/l	0.00
34) 1,4-Difluorobenzene	8.84	114	420041	50.00	ug/l	0.00
63) Chlorobenzene-d5	11.63	117	341467	50.00	ug/l	0.00
72) 1,4-Dichlorobenzene-d4	13.56	152	127449	50.00	ug/l	0.00

System Monitoring Compounds

33) 1,2-Dichloroethane-d4	8.31	65	154199	52.43	ug/l	0.00
Spiked Amount				50.000		
			Recovery	=	104.86%	
35) Dibromofluoromethane	7.88	113	124841	52.98	ug/l	0.00
Spiked Amount				50.000		
			Recovery	=	105.96%	
50) Toluene-d8	10.32	98	509456	52.80	ug/l	0.00
Spiked Amount				50.000		
			Recovery	=	105.60%	
62) 4-Bromofluorobenzene	12.62	95	159652	46.41	ug/l	0.00
Spiked Amount				50.000		
			Recovery	=	92.82%	

Target Compounds

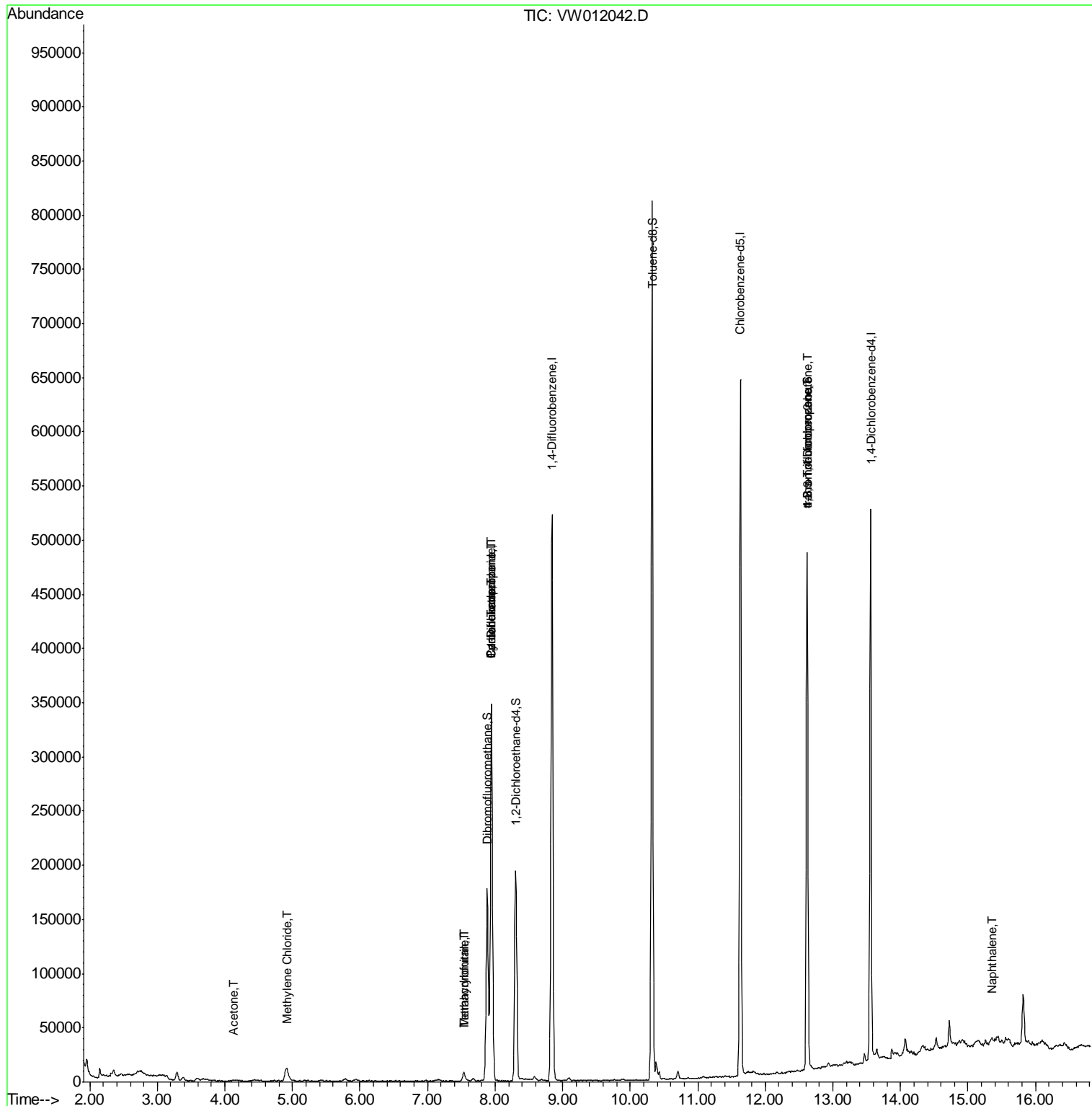
						Qvalue
11) Tert butyl alcohol	5.18	59	376	Below Cal	#	72
16) Acetone	4.13	43	1942	2.076	ug/l	90
20) Methylene Chloride	4.92	84	9483	2.939	ug/l	90
29) Tetrahydrofuran	7.54	42	7535	10.769	ug/l	97
31) Cyclohexane	7.94	56	6159	1.120	ug/l #	1
36) 1,1-Dichloropropene	7.95	75	20875	4.779	ug/l #	51
38) Carbon Tetrachloride	7.95	117	25237	6.750	ug/l #	17
41) Methacrylonitrile	7.54	41	4455	2.966	ug/l #	57
76) 1,2,3-Trichloropropane	12.62	75	84585	62.723	ug/l #	100
81) trans-1,4-Dichloro-2-buten	12.62	75	84585	144.554	ug/l #	6
95) Naphthalene	15.36	128	770	2.213	ug/l #	78

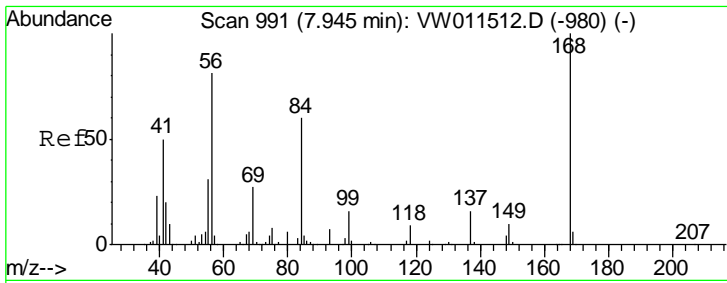
(#) = qualifier out of range (m) = manual integration (+) = signals summed

Data Path : Z:\VOASRV\HPCHEM1\MSVOA\_W\DATA\VW082019\  
 Data File : VW012042.D  
 Acq On : 20 Aug 2019 20:56  
 Operator : SY/VA  
 Sample : K4387-05  
 Misc : 4.67G/5ML/MSVOA\_W/SOIL  
 ALS Vial : 26 Sample Multiplier: 1

Instrument :  
 MSVOA\_W  
 ClientSampleId :  
 T6-C-(2)

Quant Time: Aug 21 01:36:28 2019  
 Quant Method : Z:\VOASRV\HPCHEM1\MSVOA\_W\METHOD\82W072719S.M  
 Quant Title : SW846 8260  
 QLast Update : Sat Jul 27 00:23:30 2019  
 Response via : Initial Calibration

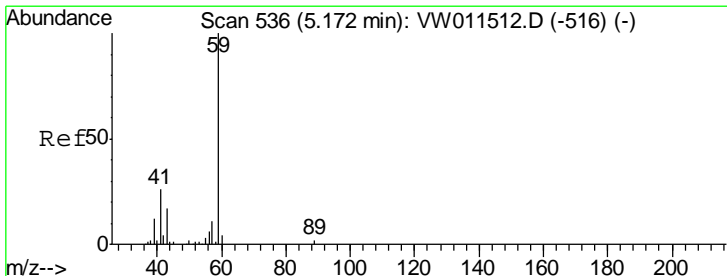
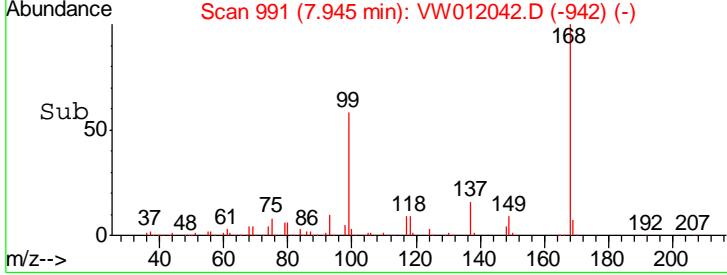
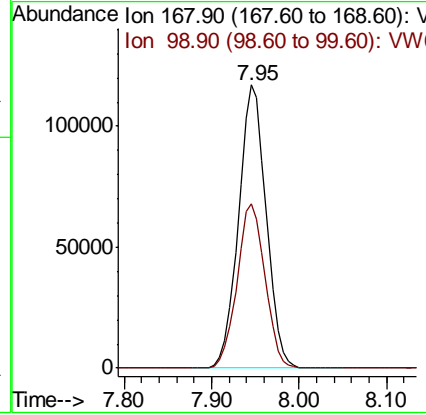
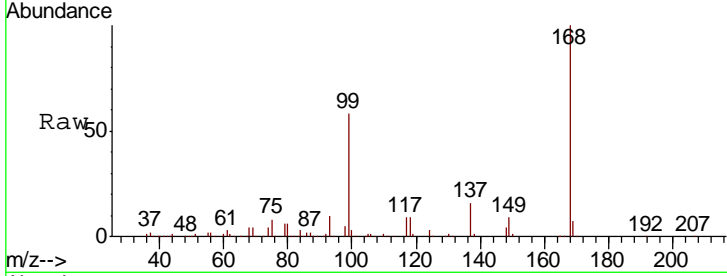




#1  
 Pentafluorobenzene  
 Concen: 50.000 ug/l  
 RT: 7.95 min Scan# 991  
 Delta R.T. -0.00 min  
 Lab File: VW012042.D  
 Acq: 20 Aug 2019 20:56

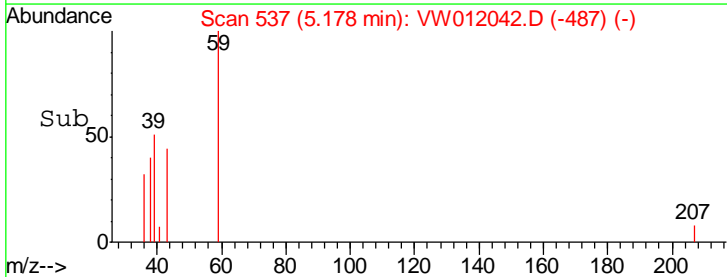
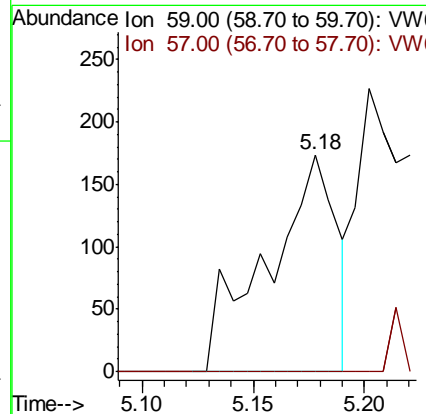
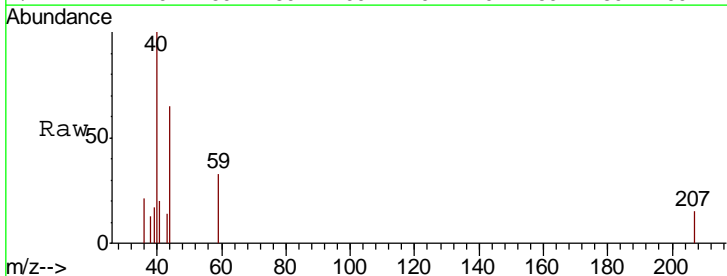
Instrument : MSVOA\_W  
 ClientSampled : T6-C-(2)

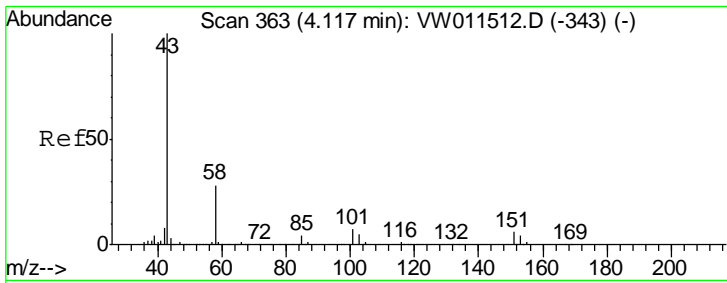
Tgt Ion: 168 Resp: 256104  
 Ion Ratio Lower Upper  
 168 100  
 99 58.3 48.2 72.4



#11  
 Tert butyl alcohol  
 Concen: Below Cal  
 RT: 5.18 min Scan# 537  
 Delta R.T. 0.01 min  
 Lab File: VW012042.D  
 Acq: 20 Aug 2019 20:56

Tgt Ion: 59 Resp: 376  
 Ion Ratio Lower Upper  
 59 100  
 57 0.0 8.5 12.7#

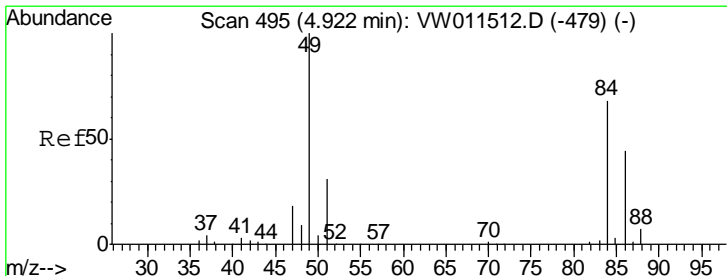
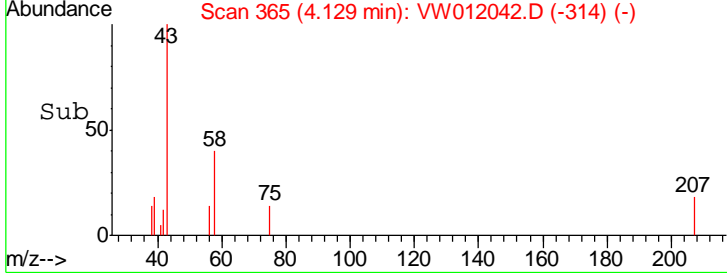
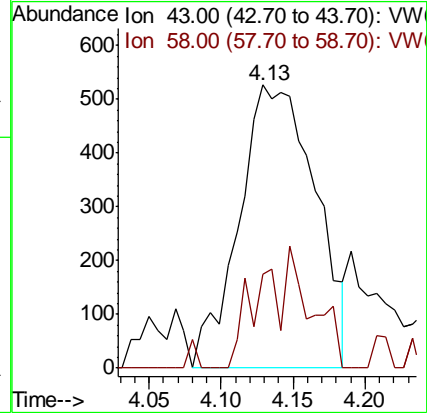
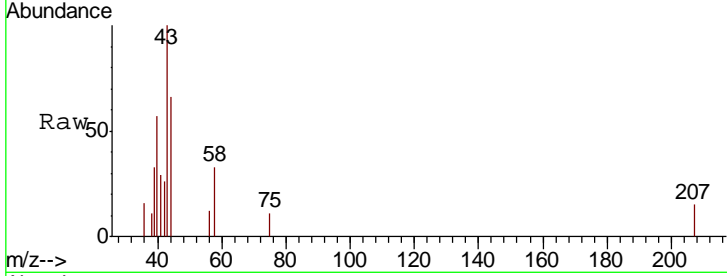




#16  
 Acetone  
 Concen: 2.076 ug/l  
 RT: 4.13 min Scan# 365  
 Delta R.T. 0.01 min  
 Lab File: VW012042.D  
 Acq: 20 Aug 2019 20:56

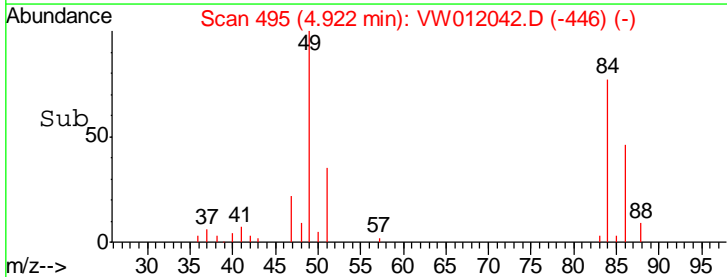
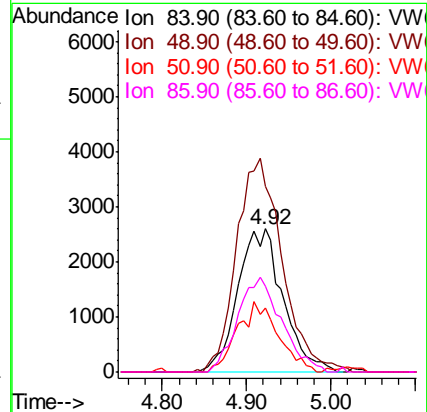
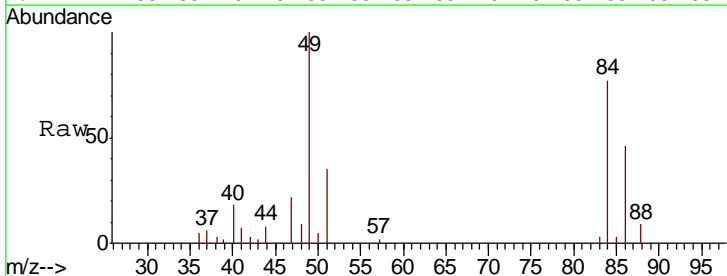
Instrument :  
 MSVOA\_W  
 ClientSampled :  
 T6-C-(2)

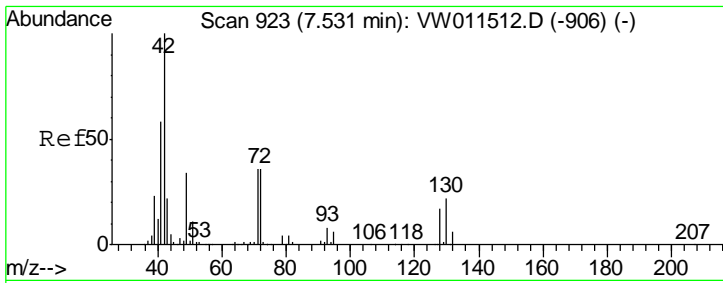
Tgt Ion: 43 Resp: 1942  
 Ion Ratio Lower Upper  
 43 100  
 58 33.2 22.3 33.5



#20  
 Methylene Chloride  
 Concen: 2.939 ug/l  
 RT: 4.92 min Scan# 495  
 Delta R.T. -0.00 min  
 Lab File: VW012042.D  
 Acq: 20 Aug 2019 20:56

Tgt Ion: 84 Resp: 9483  
 Ion Ratio Lower Upper  
 84 100  
 49 130.0 117.8 176.6  
 51 45.1 37.0 55.4  
 86 59.8 51.8 77.8

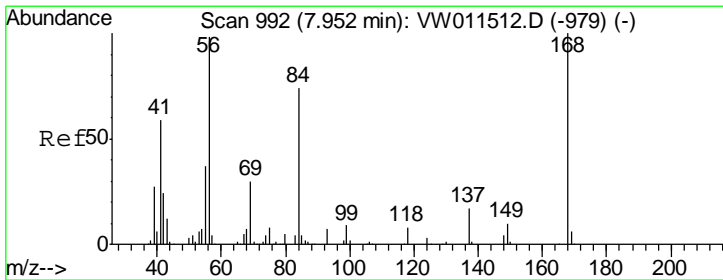
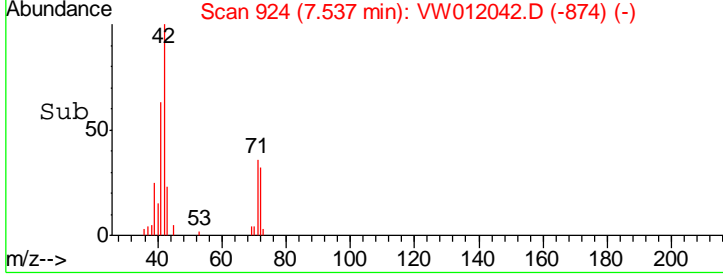
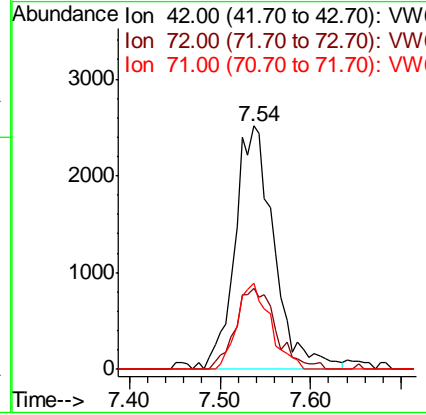
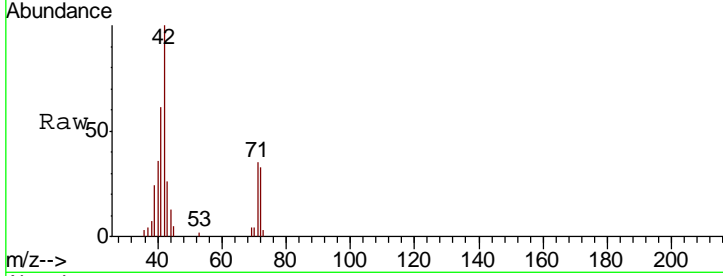




#29  
 Tetrahydrofuran  
 Concen: 10.769 ug/l  
 RT: 7.54 min Scan# 924  
 Delta R.T. 0.01 min  
 Lab File: VW012042.D  
 Acq: 20 Aug 2019 20:56

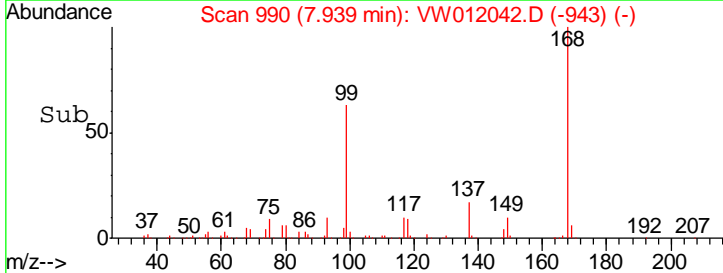
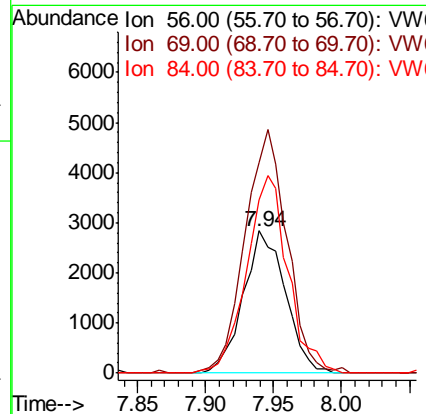
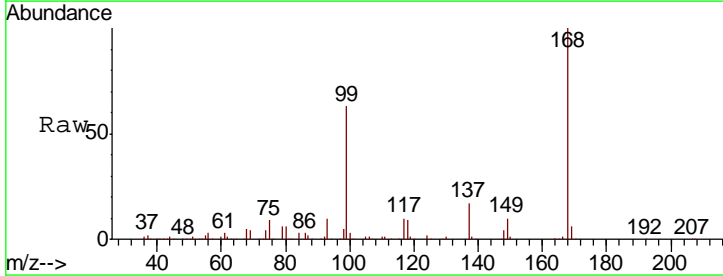
Instrument :  
 MSVOA\_W  
 ClientSampled :  
 T6-C-(2)

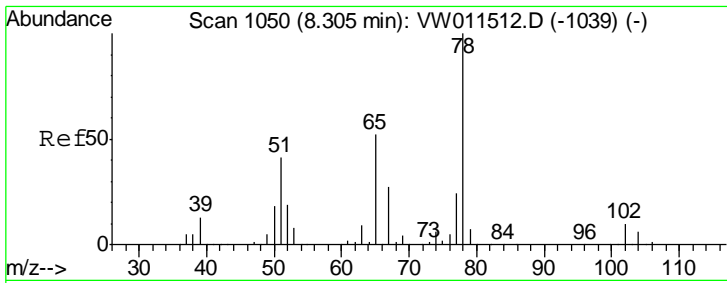
Tgt Ion	Resp	Lower	Upper
42	100		
72	34.6	27.1	40.7
71	29.7	26.2	39.4



#31  
 Cyclohexane  
 Concen: 1.120 ug/l  
 RT: 7.94 min Scan# 990  
 Delta R.T. -0.01 min  
 Lab File: VW012042.D  
 Acq: 20 Aug 2019 20:56

Tgt Ion	Resp	Lower	Upper
56	100		
69	147.7	24.3	36.5#
84	121.4	60.4	90.6#

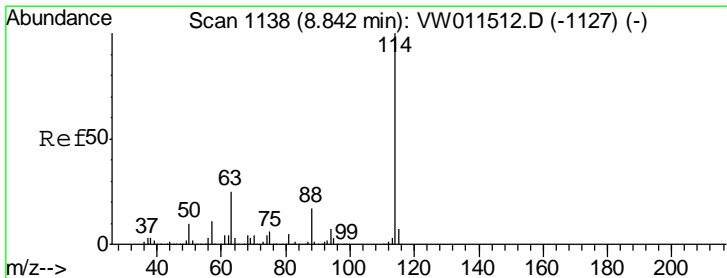
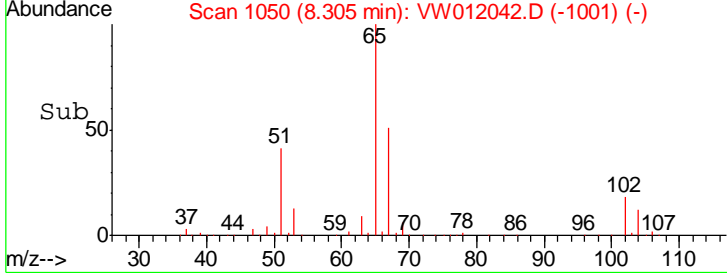
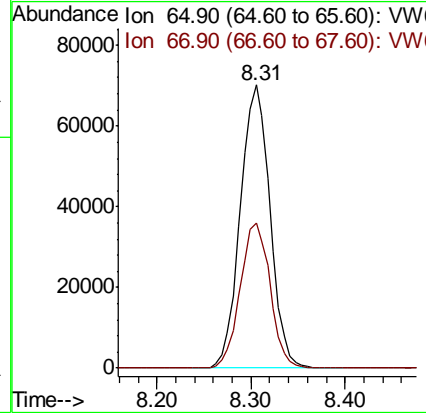
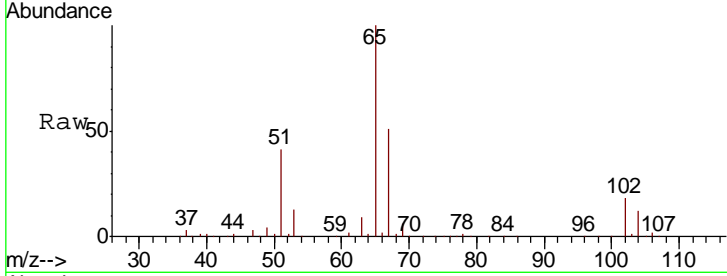




#33  
 1,2-Dichloroethane-d4  
 Concen: 52.435 ug/l  
 RT: 8.31 min Scan# 1050  
 Delta R.T. -0.00 min  
 Lab File: VW012042.D  
 Acq: 20 Aug 2019 20:56

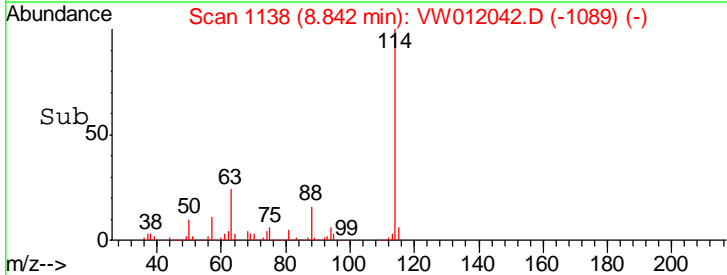
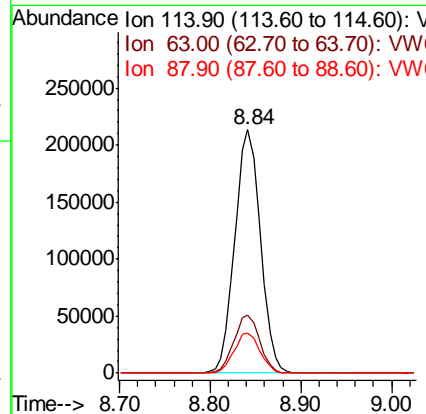
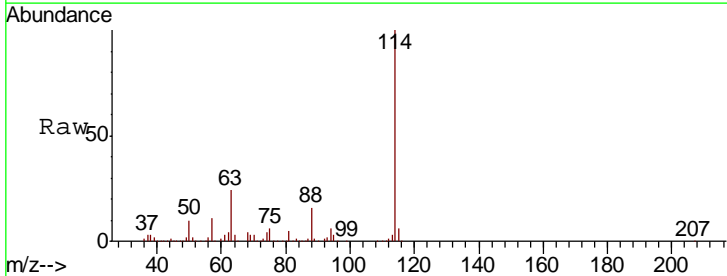
Instrument : MSVOA\_W  
 ClientSampled : T6-C-(2)

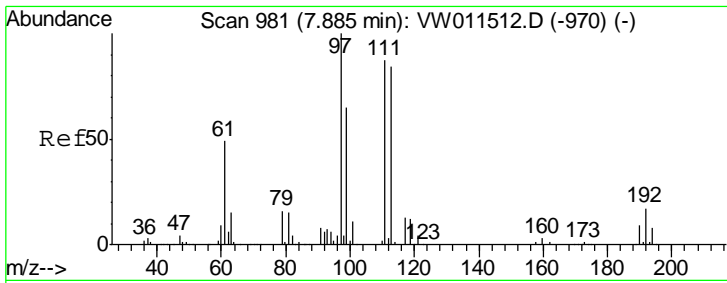
Tgt Ion	Resp	Lower	Upper
65	154199		
67	51.8	0.0	105.2



#34  
 1,4-Difluorobenzene  
 Concen: 50.000 ug/l  
 RT: 8.84 min Scan# 1138  
 Delta R.T. -0.00 min  
 Lab File: VW012042.D  
 Acq: 20 Aug 2019 20:56

Tgt Ion	Resp	Lower	Upper
114	420041		
63	23.7	0.0	49.2
88	16.4	0.0	33.8

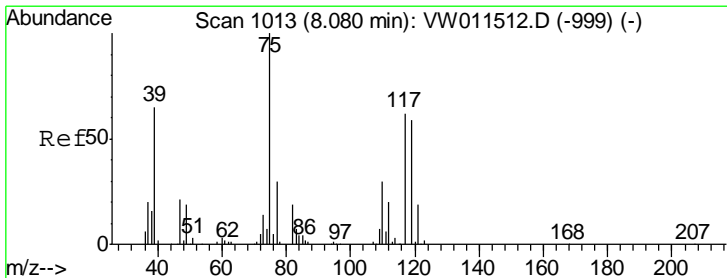
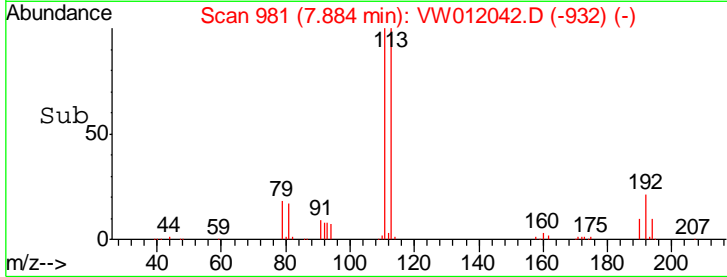
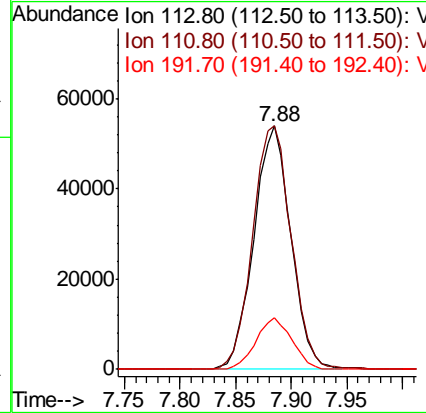
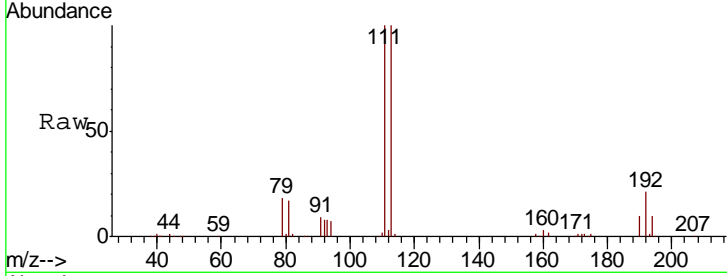




#35  
 Dibromofluoromethane  
 Concen: 52.977 ug/l  
 RT: 7.88 min Scan# 981  
 Delta R.T. -0.00 min  
 Lab File: VW012042.D  
 Acq: 20 Aug 2019 20:56

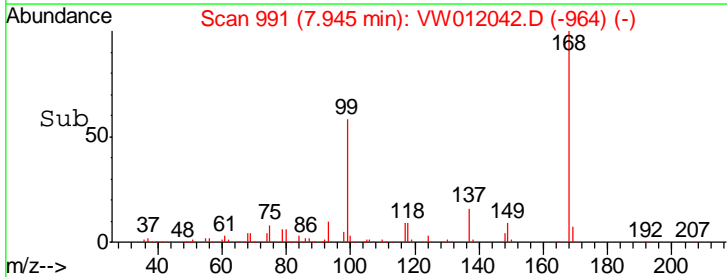
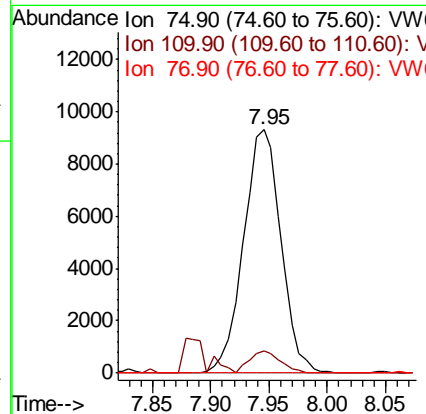
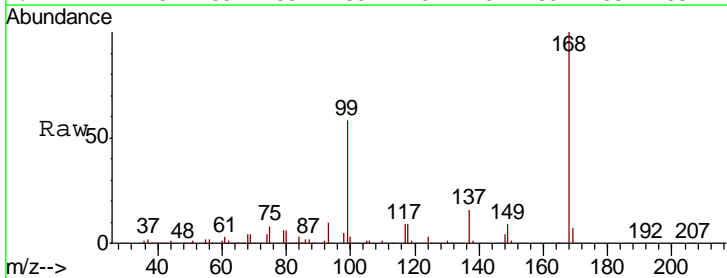
Instrument :  
 MSVOA\_W  
 ClientSampled :  
 T6-C-(2)

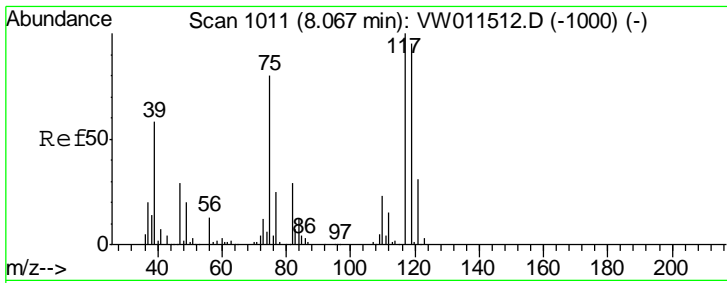
Tgt Ion	Resp	Lower	Upper
113	124841		
113	100		
111	104.1	82.7	124.1
192	20.8	16.1	24.1



#36  
 1,1-Dichloropropene  
 Concen: 4.779 ug/l  
 RT: 7.95 min Scan# 991  
 Delta R.T. -0.13 min  
 Lab File: VW012042.D  
 Acq: 20 Aug 2019 20:56

Tgt Ion	Resp	Lower	Upper
75	20875		
75	100		
110	7.6	15.6	46.8#
77	0.0	24.3	36.5#

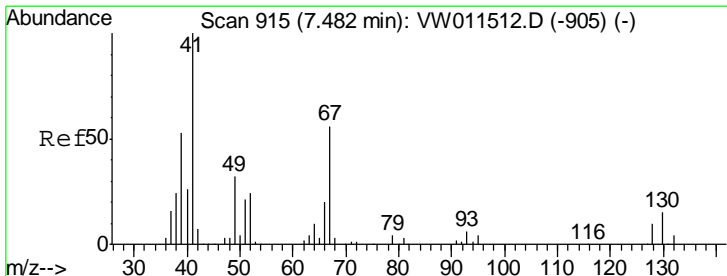
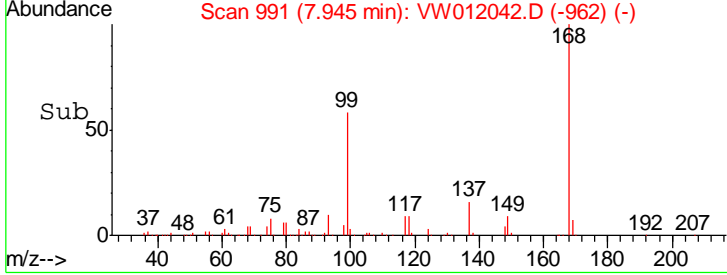
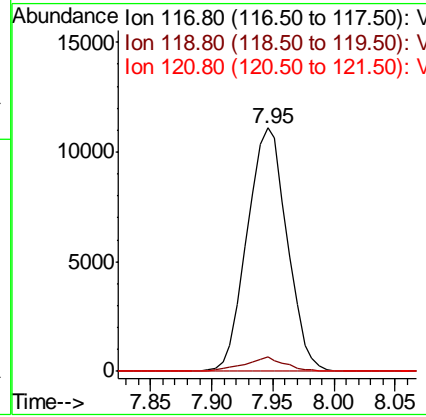
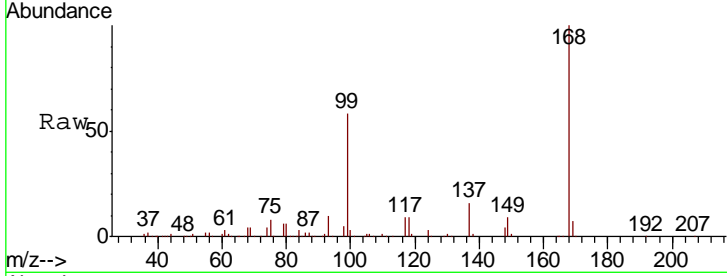




#38  
 Carbon Tetrachloride  
 Concen: 6.750 ug/l  
 RT: 7.95 min Scan# 991  
 Delta R.T. -0.12 min  
 Lab File: VW012042.D  
 Acq: 20 Aug 2019 20:56

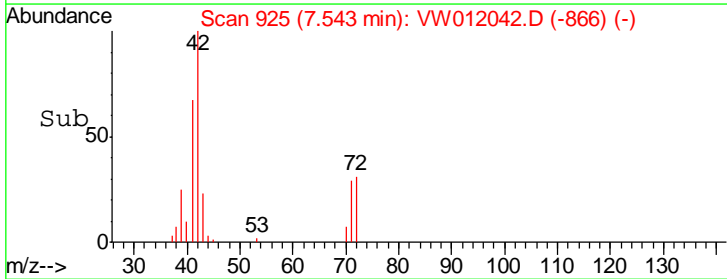
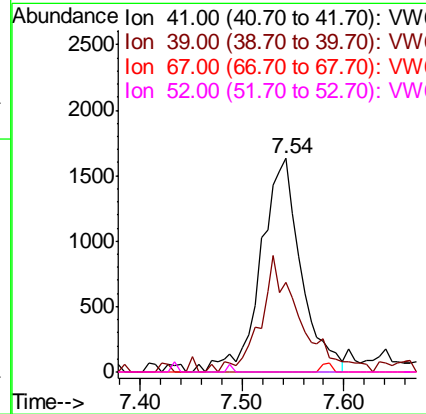
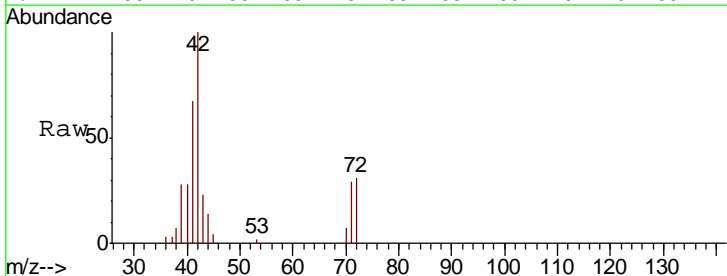
**Instrument :**  
 MSVOA\_W  
**Client Sampled :**  
 T6-C-(2)

Tgt Ion	Resp	Lower	Upper
117	100		
119	5.8	75.8	113.6#
121	0.0	24.7	37.1#

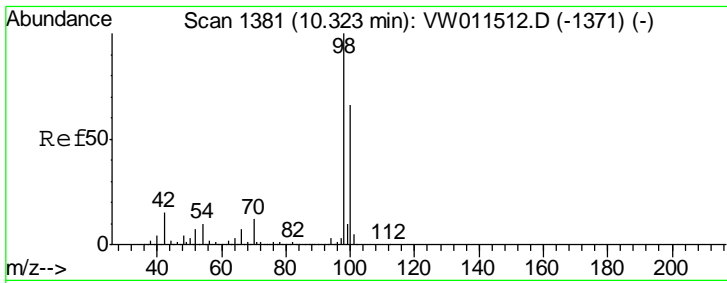


#41  
 Methacrylonitrile  
 Concen: 2.966 ug/l  
 RT: 7.54 min Scan# 925  
 Delta R.T. 0.06 min  
 Lab File: VW012042.D  
 Acq: 20 Aug 2019 20:56

Tgt Ion	Resp	Lower	Upper
41	100		
39	54.0	43.0	64.4
67	0.0	47.5	71.3#
52	0.0	21.0	31.6#



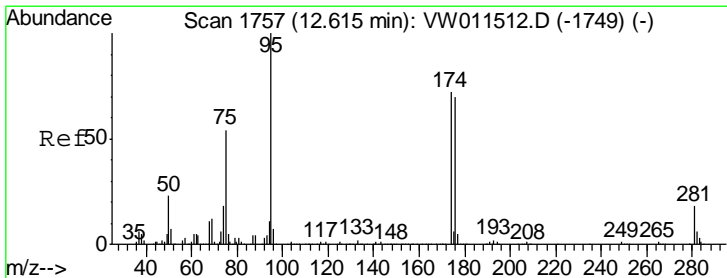
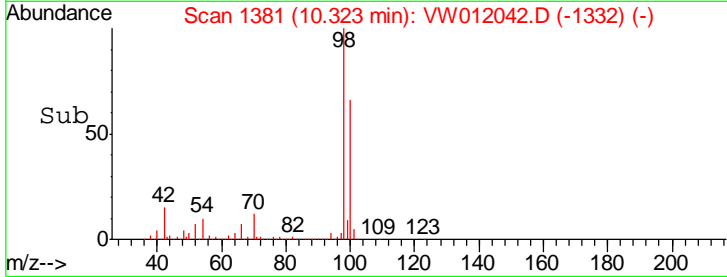
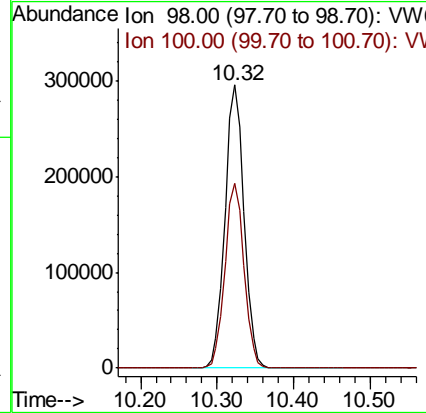
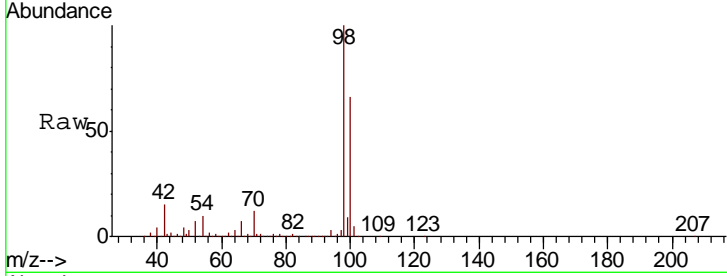




#50  
 Toluene-d8  
 Concen: 52.803 ug/l  
 RT: 10.32 min Scan# 1381  
 Delta R.T. -0.00 min  
 Lab File: VW012042.D  
 Acq: 20 Aug 2019 20:56

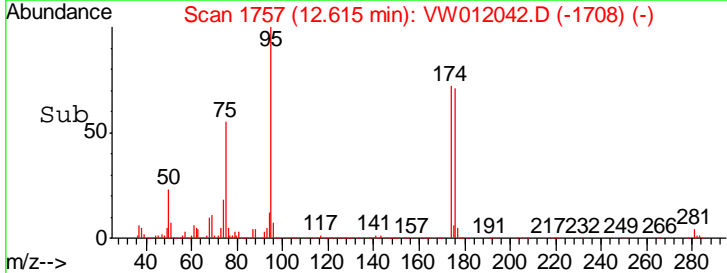
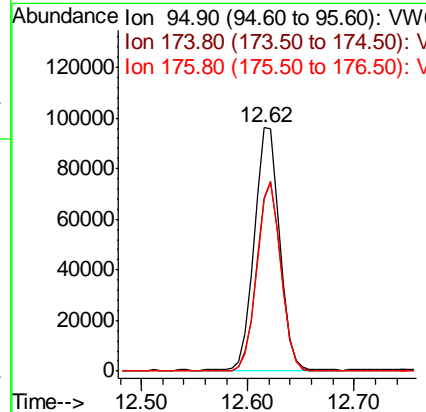
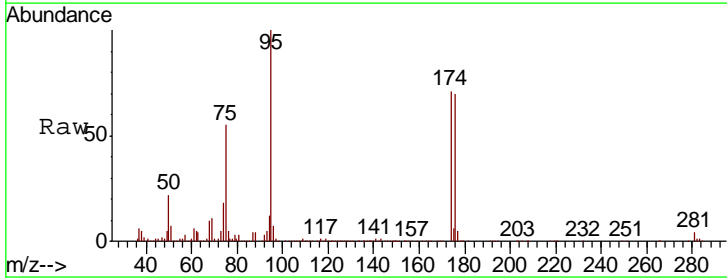
Instrument :  
 MSVOA\_W  
 ClientSampled :  
 T6-C-(2)

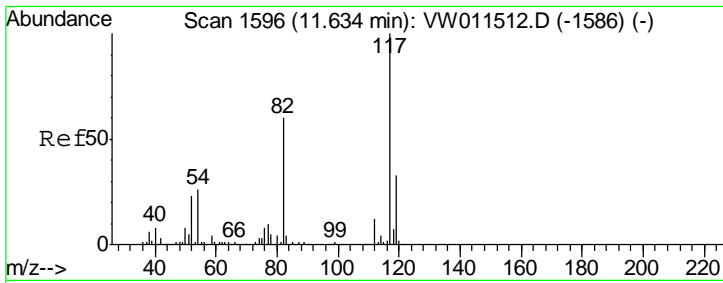
Tgt Ion: 98 Resp: 509456  
 Ion Ratio Lower Upper  
 98 100  
 100 65.5 52.7 79.1



#62  
 4-Bromofluorobenzene  
 Concen: 46.413 ug/l  
 RT: 12.62 min Scan# 1757  
 Delta R.T. -0.00 min  
 Lab File: VW012042.D  
 Acq: 20 Aug 2019 20:56

Tgt Ion: 95 Resp: 159652  
 Ion Ratio Lower Upper  
 95 100  
 174 74.9 0.0 150.2  
 176 74.0 0.0 144.4

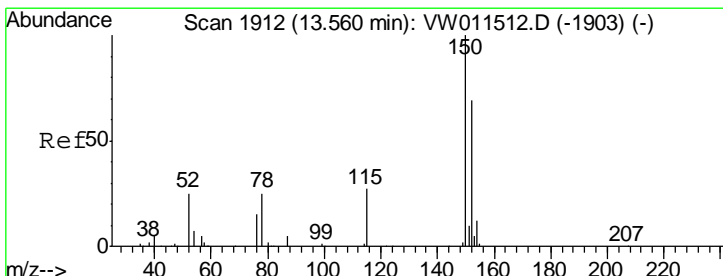
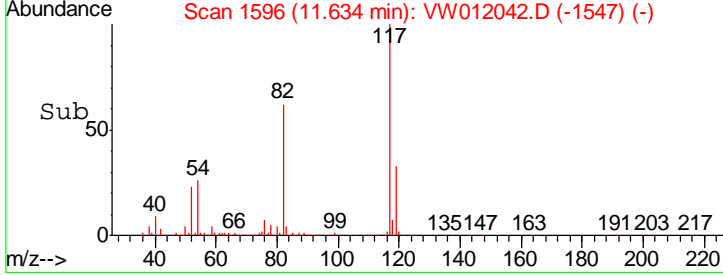
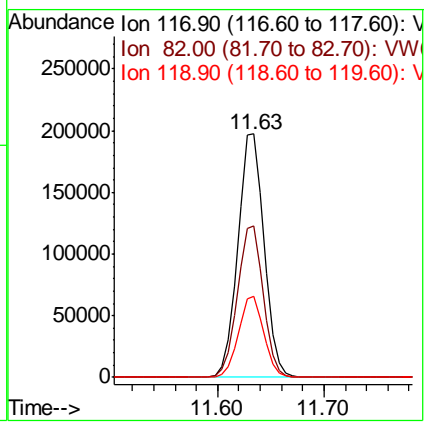
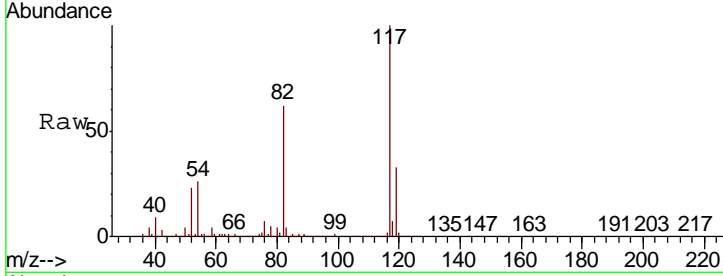




#63  
 Chlorobenzene-d5  
 Concen: 50.000 ug/l  
 RT: 11.63 min Scan# 1596  
 Delta R.T. -0.00 min  
 Lab File: VW012042.D  
 Acq: 20 Aug 2019 20:56

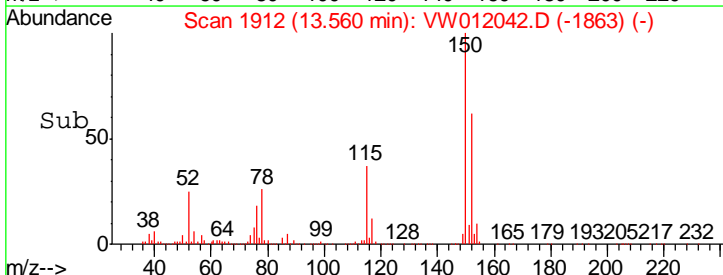
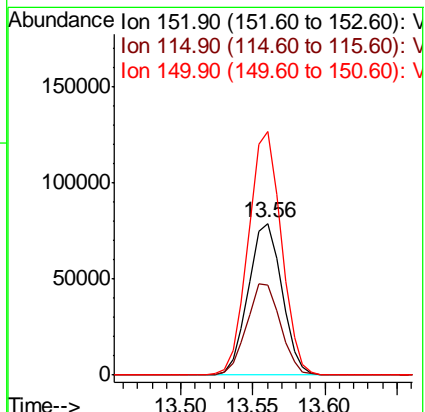
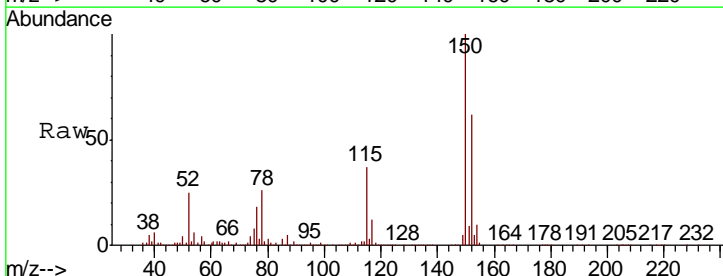
Instrument : MSVOA\_W  
 ClientSampled : T6-C-(2)

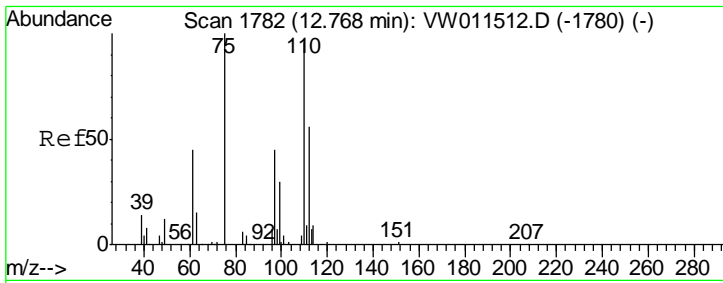
Tgt Ion	Resp	Lower	Upper
117	341467		
82	62.0	47.9	71.9
119	33.2	26.2	39.2



#72  
 1,4-Dichlorobenzene-d4  
 Concen: 50.000 ug/l  
 RT: 13.56 min Scan# 1912  
 Delta R.T. -0.00 min  
 Lab File: VW012042.D  
 Acq: 20 Aug 2019 20:56

Tgt Ion	Resp	Lower	Upper
152	127449		
115	60.3	30.5	91.5
150	157.5	0.0	352.6

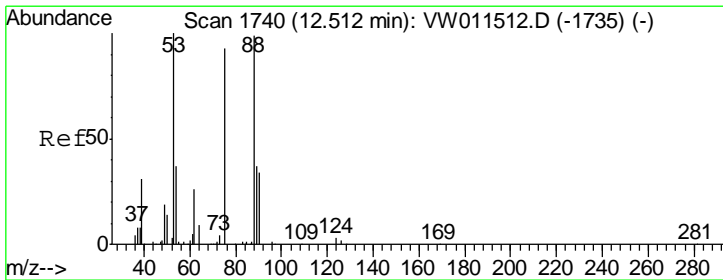
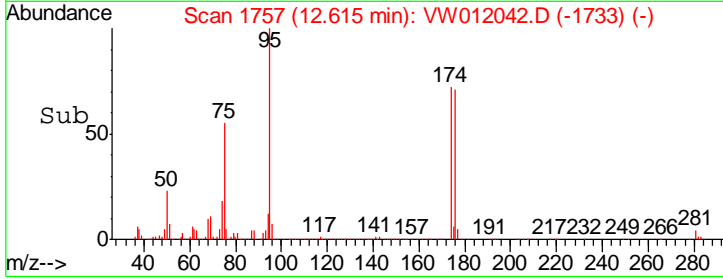
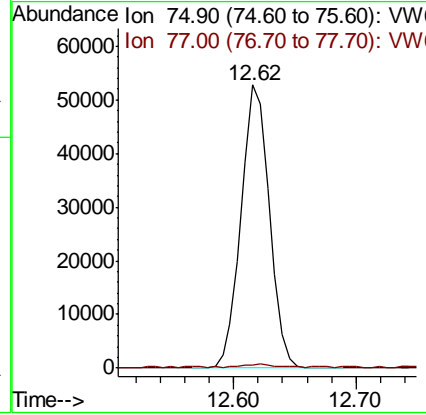
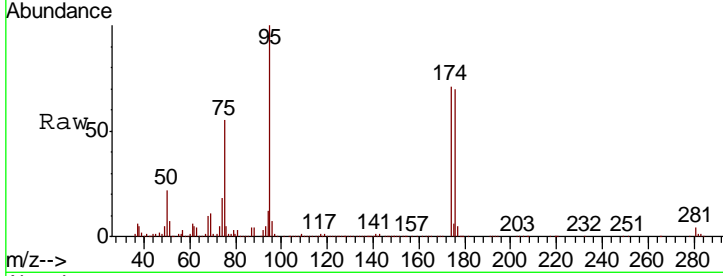




#76  
 1,2,3-Trichloropropane  
 Concen: 62.723 ug/l  
 RT: 12.62 min Scan# 1757  
 Delta R.T. -0.15 min  
 Lab File: VW012042.D  
 Acq: 20 Aug 2019 20:56

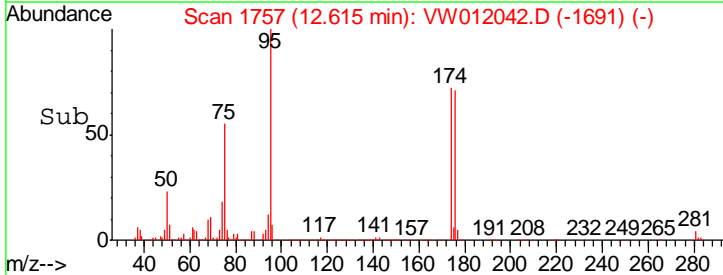
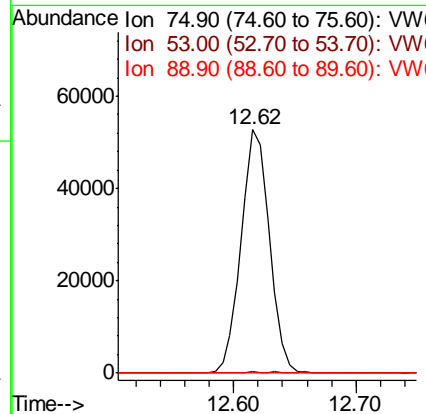
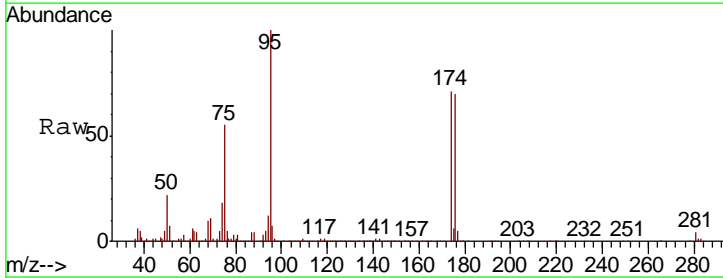
Instrument : MSVOA\_W  
 ClientSampled : T6-C-(2)

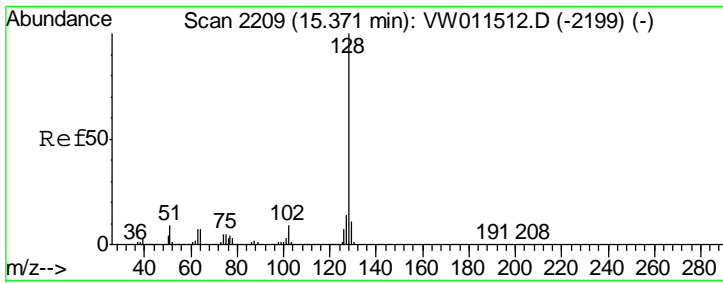
Tgt Ion	Resp	Lower	Upper
75	100		
77	1.3	0.0	0.0#



#81  
 trans-1,4-Dichloro-2-butene  
 Concen: 144.554 ug/l  
 RT: 12.62 min Scan# 1757  
 Delta R.T. 0.10 min  
 Lab File: VW012042.D  
 Acq: 20 Aug 2019 20:56

Tgt Ion	Resp	Lower	Upper
75	100		
53	0.2	88.0	132.0#
89	0.1	35.3	52.9#





#95  
 Naphthalene  
 Concen: 2.213 ug/l  
 RT: 15.36 min Scan# 2208  
 Delta R.T. -0.01 min  
 Lab File: VW012042.D  
 Acq: 20 Aug 2019 20:56

Instrument : MSVOA\_W  
 ClientSampled : T6-C-(2)

Tgt Ion	Resp	Lower	Upper
128	100		
127	21.0	10.6	16.0#
129	20.4	8.6	13.0#

