

Data Path : Z:\VOASRV\HPCHEM1\MSVOA W\DATA\VW082118\  
 Data File : VW004844.D  
 Acq On : 21 Aug 2018 16:28  
 Operator : SY/AP  
 Sample : J4561-01  
 Misc : 4.53G/5ML/MSVOA W/SOIL  
 ALS Vial : 13 Sample Multiplier: 1

Instrument :  
 MSVOA\_W  
 ClientSampleId :  
 H-R-P-T-WC-1-GRAB-7

Integration Parameters: RTEINT.P

Integrator: RTE  
 Smoothing : ON  
 Sampling : 1  
 Start Thrs: 0.2  
 Stop Thrs : 0

Filtering: 5  
 Min Area: 3 % of largest Peak  
 Max Peaks: 100  
 Peak Location: TOP

If leading or trailing edge < 100 prefer < Baseline drop else tangent >  
 Peak separation: 5

Method : Z:\VOASRV\HPCHEM1\MSVOA\_W\METHOD\82W081918S.M  
 Title : SW846 8260

Signal : TIC

peak #	R.T. min	first scan	max scan	last scan	PK TY	peak height	corr. area	corr. % max.	% of total
1	1.813	28	37	57	rBV	11795320	29214880	6.26%	0.729%
2	8.488	1115	1132	1157	rBV	2205162	8352958	1.79%	0.208%
3	9.336	1258	1271	1288	rBV4	10561336	35170231	7.54%	0.877%
4	9.616	1305	1317	1334	rVB3	23070080	66412750	14.23%	1.657%
5	9.769	1334	1342	1355	rVB	6240941	17068049	3.66%	0.426%
6	9.903	1356	1364	1369	rBV	4285323	11123975	2.38%	0.278%
7	10.092	1386	1395	1404	rBV2	13567170	35581820	7.63%	0.888%
8	10.256	1410	1422	1430	rBV3	7907966	27924828	5.99%	0.697%
9	10.329	1430	1434	1443	rVB	2444019	4735251	1.01%	0.118%
10	10.451	1444	1454	1457	rBV3	2737698	6374187	1.37%	0.159%
11	10.500	1457	1462	1473	rVB4	5792359	16908563	3.62%	0.422%
12	10.634	1473	1484	1500	rBV	23989090	65898546	14.12%	1.644%
13	10.787	1501	1509	1511	rBV2	9983134	19532659	4.19%	0.487%
14	10.933	1525	1533	1543	rBV6	8550791	36187846	7.76%	0.903%
15	11.049	1544	1552	1560	rBV3	21462432	70248101	15.06%	1.753%
16	11.128	1560	1565	1575	rVB3	17725441	52001089	11.15%	1.297%
17	11.244	1575	1584	1589	rBV2	42958779	128765689	27.60%	3.213%
18	11.299	1589	1593	1604	rVB3	44993568	124951109	26.78%	3.117%
19	11.396	1605	1609	1615	rVB	12913799	24597359	5.27%	0.614%
20	11.469	1615	1621	1628	rVB2	15950801	40768786	8.74%	1.017%
21	11.579	1628	1639	1644	rBV4	24863157	82994944	17.79%	2.071%
22	11.683	1651	1656	1667	rVB4	21428160	68193417	14.62%	1.701%
23	11.780	1667	1672	1676	rBV	12865602	20663097	4.43%	0.516%
24	11.841	1676	1682	1687	rBV3	39955722	105386530	22.59%	2.629%
25	11.908	1687	1693	1701	rVB4	53614928	177624473	38.07%	4.432%
26	12.000	1701	1708	1712	rBV2	50066032	131353277	28.15%	3.277%
27	12.049	1713	1716	1721	rVB	20517104	34653048	7.43%	0.865%
28	12.152	1726	1733	1739	rBV6	83252500	230531910	49.41%	5.752%
29	12.219	1739	1744	1756	rVB6	71133910	284083341	60.89%	7.088%
30	12.366	1760	1768	1777	rBV9	107910336	466550789	100.00%	11.640%
31	12.640	1808	1813	1819	rVB4	68721552	142137418	30.47%	3.546%
32	12.731	1819	1828	1834	rBV8	109788176	420506505	90.13%	10.491%
33	12.890	1846	1854	1859	rBV10	99153868	342048896	73.31%	8.534%
34	14.219	2068	2072	2078	rBV6	21314766	51765314	11.10%	1.292%

Data Path : Z:\VOASRV\HPCHEM1\MSVOA W\DATA\VW082118\  
Data File : VW004844.D  
Acq On : 21 Aug 2018 16:28  
Operator : SY/AP  
Sample : J4561-01  
Misc : 4.53G/5ML/MSVOA W/SOIL  
ALS Vial : 13 Sample Multiplier: 1

Instrument :  
MSVOA\_W  
ClientSampleId :  
H-R-P-T-WC-1-GRAB-7

Integration Parameters: RTEINT.P  
Integrator: RTE  
Smoothing : ON Filtering: 5  
Sampling : 1 Min Area: 3 % of largest Peak  
Start Thrs: 0.2 Max Peaks: 100  
Stop Thrs : 0 Peak Location: TOP

If leading or trailing edge < 100 prefer < Baseline drop else tangent >  
Peak separation: 5

Method : Z:\VOASRV\HPCHEM1\MSVOA\_W\METHOD\82W081918S.M  
Title : SW846 8260

35	14.286	2079	2083	2090	rVB5	66688588	133967571	28.71%	3.342%
36	14.408	2098	2103	2106	rBV2	100838284	185973431	39.86%	4.640%
37	14.567	2122	2129	2134	rVV2	66912629	140921075	30.20%	3.516%
38	14.615	2134	2137	2144	rVB3	35457256	62140641	13.32%	1.550%
39	14.871	2176	2179	2186	rVB4	14904471	24435134	5.24%	0.610%
40	14.938	2187	2190	2194	rVV3	5319204	9418898	2.02%	0.235%
41	14.987	2194	2198	2200	rVV	9655839	16418195	3.52%	0.410%
42	15.018	2200	2203	2208	rVB2	16777115	26935690	5.77%	0.672%
43	15.085	2209	2214	2220	rVB4	6349736	11978187	2.57%	0.299%
44	15.255	2235	2242	2247	rVB5	2569472	6713305	1.44%	0.167%
45	15.414	2262	2268	2277	rBV5	3255318	8861416	1.90%	0.221%

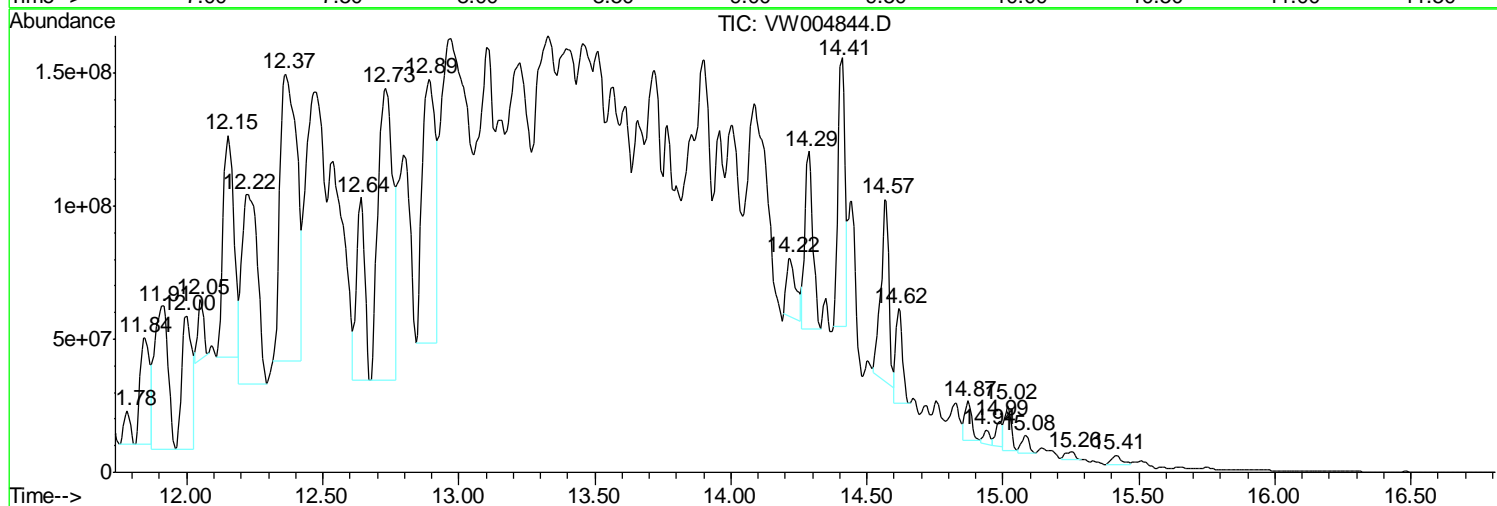
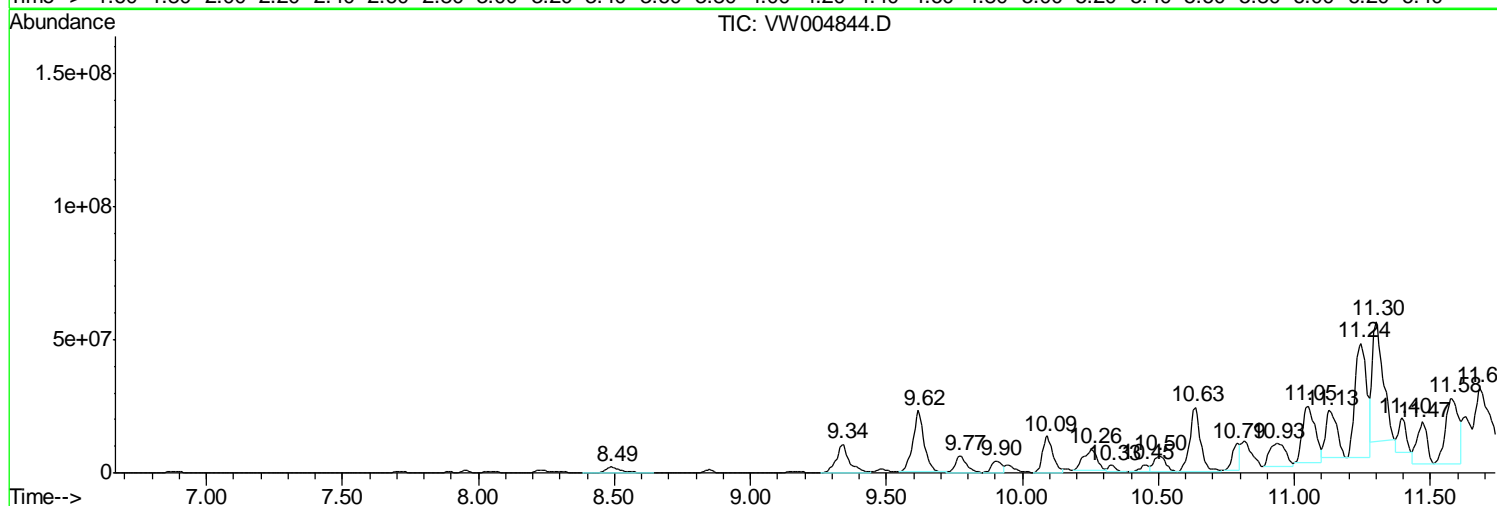
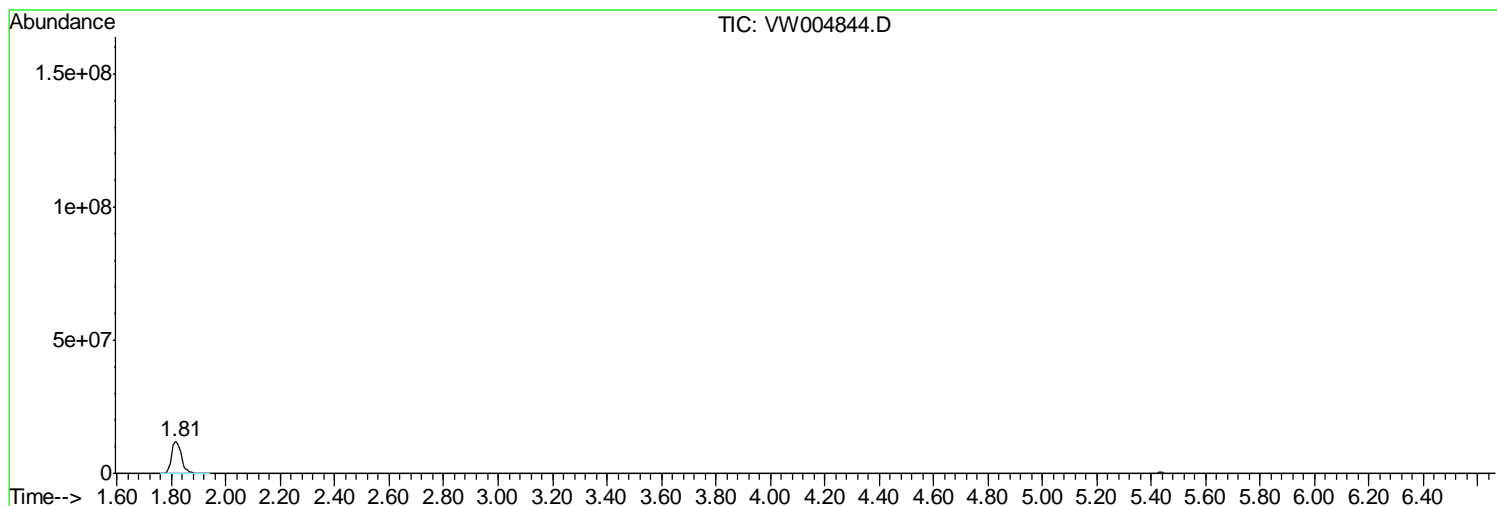
Sum of corrected areas: 4008075178

Data Path : Z:\VOASRV\HPCHEM1\MSVOA W\DATA\VW082118\  
 Data File : VW004844.D  
 Acq On : 21 Aug 2018 16:28  
 Operator : SY/AP  
 Sample : J4561-01  
 Misc : 4.53G/5ML/MSVOA W/SOIL  
 ALS Vial : 13 Sample Multiplier: 1

**Instrument :**  
 MSVOA\_W  
**Client Sampled :**  
 H-R-P-T-WC-1-GRAB-7

Quant Method : Z:\VOASRV\HPCHEM1\MSVOA\_W\METHOD\82W081918S.M  
 Quant Title : SW846 8260

TIC Library : C:\DATABASE\NIST11.L  
 TIC Integration Parameters: LSCINT.P



Data Path : Z:\VOASRV\HPCHEM1\MSVOA W\DATA\VW082118\  
 Data File : VW004844.D  
 Acq On : 21 Aug 2018 16:28  
 Operator : SY/AP  
 Sample : J4561-01  
 Misc : 4.53G/5ML/MSVOA W/SOIL  
 ALS Vial : 13 Sample Multiplier: 1

Instrument :  
 MSVOA\_W  
 ClientSampled :  
 H-R-P-T-WC-1-GRAB-7

Quant Method : Z:\VOASRV\HPCHEM1\MSVOA\_W\METHOD\82W081918S.M  
 Quant Title : SW846 8260

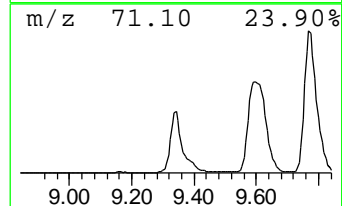
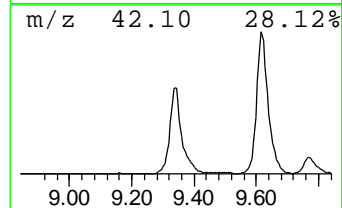
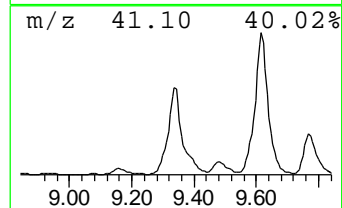
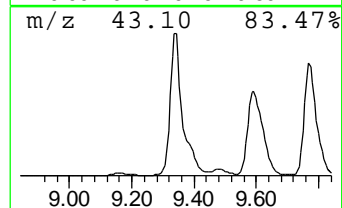
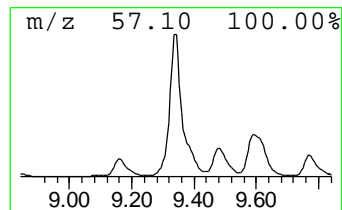
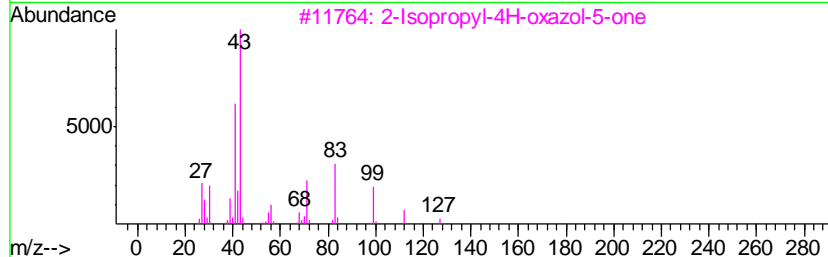
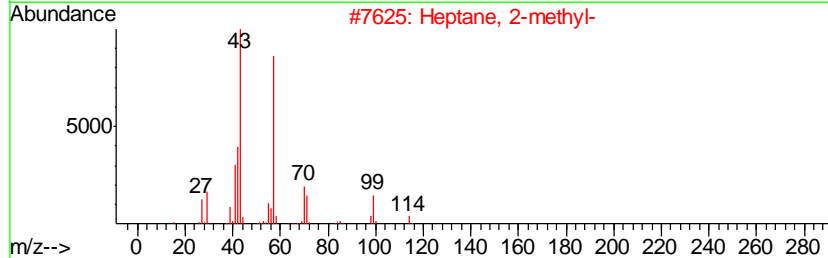
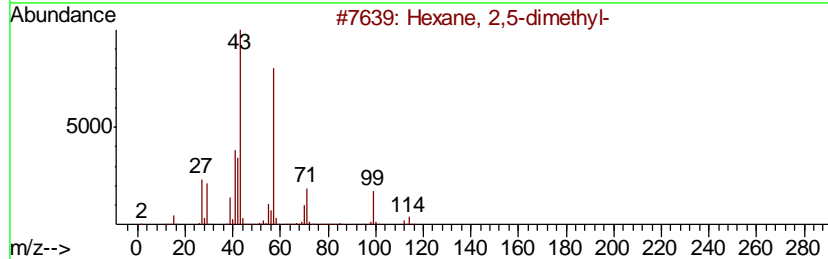
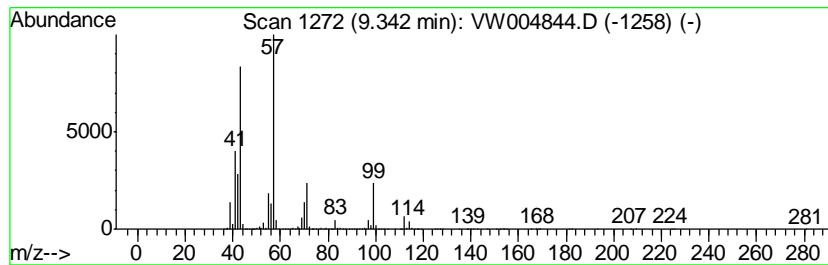
TIC Library : C:\DATABASE\NIST11.L  
 TIC Integration Parameters: LSCINT.P

\*\*\*\*\*  
 Peak Number 2 Hexane, 2,5-dimethyl- Concentration Rank 6

R.T.	EstConc	Area	Relative to ISTD	R.T.
9.34	210.53 ug/l	35170200	1,4-Difluorobenzene	8.85

Hit#	of	Tentative ID	MW	MolForm	CAS#	Qual
1	5	Hexane, 2,5-dimethyl-	114	C8H18	000592-13-2	91
2		Heptane, 2-methyl-	114	C8H18	000592-27-8	80
3		2-Isopropyl-4H-oxazol-5-one	127	C6H9NO2	1000190-01-9	50
4		Oxalic acid, isobutyl pentyl ester	216	C11H20O4	1000309-37-0	47
5		1-Hexene, 3,5,5-trimethyl-	126	C9H18	004316-65-8	38



Data Path : Z:\VOASRV\HPCHEM1\MSVOA W\DATA\VW082118\  
 Data File : VW004844.D  
 Acq On : 21 Aug 2018 16:28  
 Operator : SY/AP  
 Sample : J4561-01  
 Misc : 4.53G/5ML/MSVOA W/SOIL  
 ALS Vial : 13 Sample Multiplier: 1

Instrument :  
 MSVOA\_W  
 ClientSampled :  
 H-R-P-T-WC-1-GRAB-7

Quant Method : Z:\VOASRV\HPCHEM1\MSVOA\_W\METHOD\82W081918S.M  
 Quant Title : SW846 8260

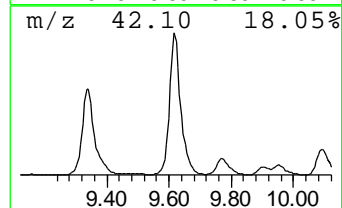
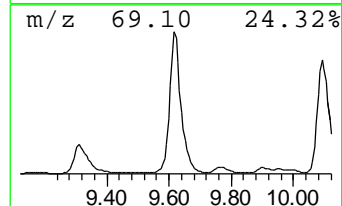
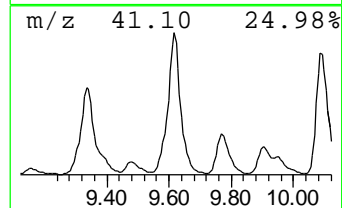
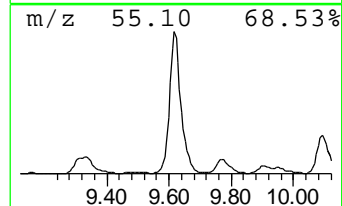
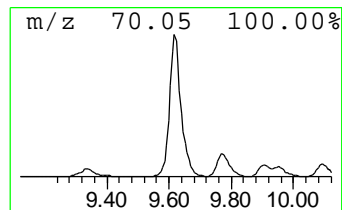
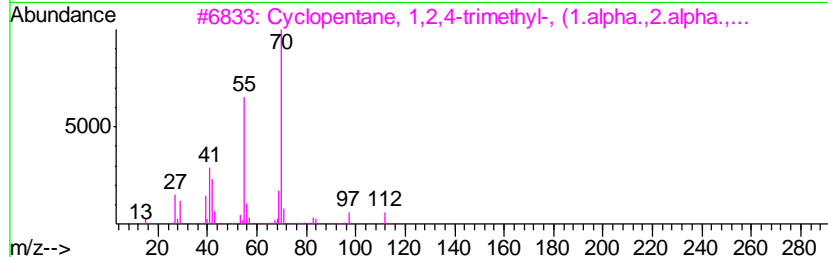
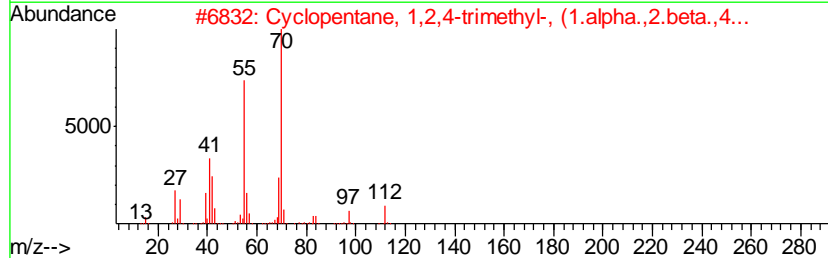
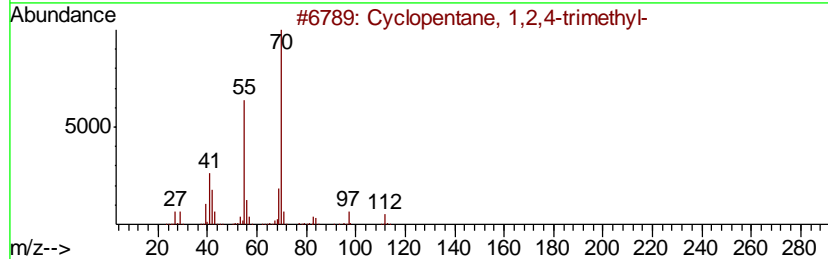
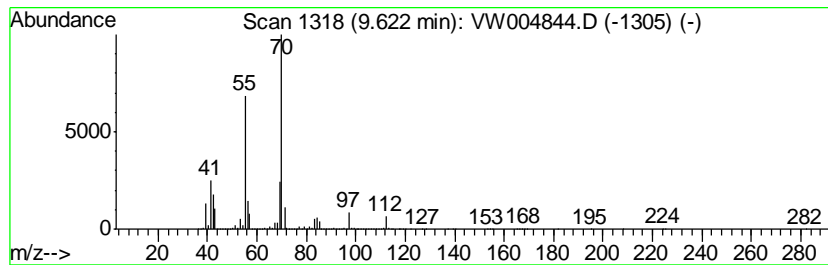
TIC Library : C:\DATABASE\NIST11.L  
 TIC Integration Parameters: LSCINT.P

\*\*\*\*\*  
 Peak Number 3 Cyclopentane, 1,2,4-trimethyl- Concentration Rank 2

R.T.	EstConc	Area	Relative to ISTD	R.T.
9.62	397.54 ug/l	66412800	1,4-Difluorobenzene	8.85

Hit#	of	Tentative ID	MW	MolForm	CAS#	Qual
1	5	Cyclopentane, 1,2,4-trimethyl-	112	C8H16	002815-58-9	94
2		Cyclopentane, 1,2,4-trimethyl-, ...	112	C8H16	016883-48-0	91
3		Cyclopentane, 1,2,4-trimethyl-, ...	112	C8H16	004850-28-6	91
4		Cyclopentane, 1,2,3-trimethyl-, ...	112	C8H16	002613-69-6	80
5		Hexane, 2-methyl-4-methylene-	112	C8H16	003404-80-6	78



Data Path : Z:\VOASRV\HPCHEM1\MSVOA W\DATA\VW082118\  
 Data File : VW004844.D  
 Acq On : 21 Aug 2018 16:28  
 Operator : SY/AP  
 Sample : J4561-01  
 Misc : 4.53G/5ML/MSVOA W/SOIL  
 ALS Vial : 13 Sample Multiplier: 1

**Instrument :**  
 MSVOA\_W  
**Client Sampled :**  
 H-R-P-T-WC-1-GRAB-7

Quant Method : Z:\VOASRV\HPCHEM1\MSVOA\_W\METHOD\82W081918S.M  
 Quant Title : SW846 8260

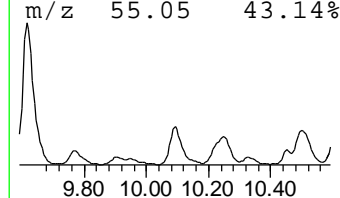
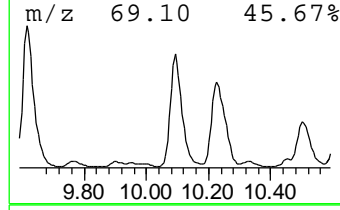
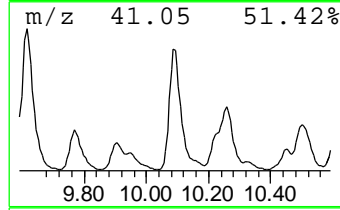
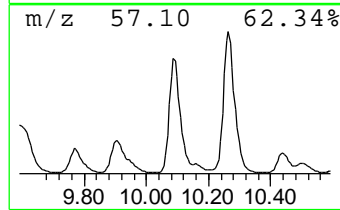
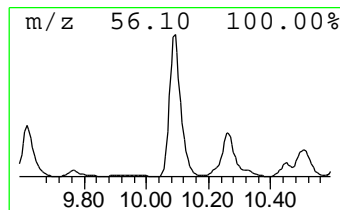
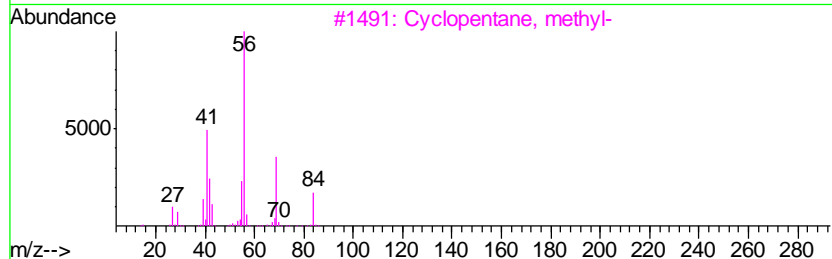
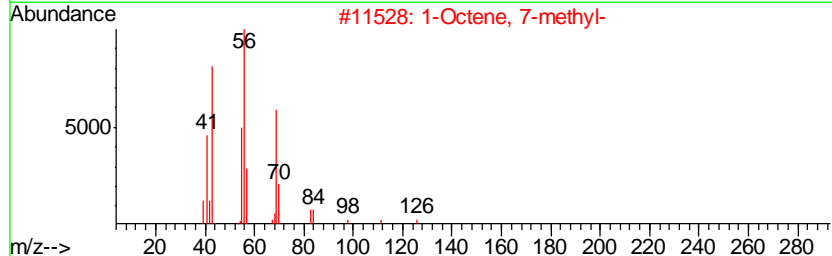
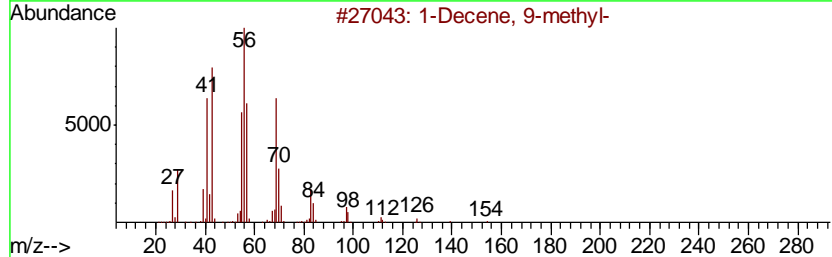
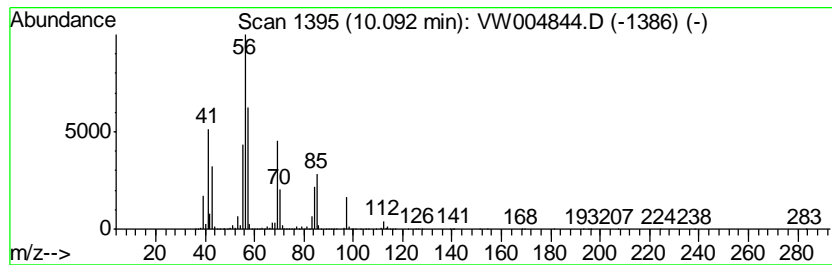
TIC Library : C:\DATABASE\NIST11.L  
 TIC Integration Parameters: LSCINT.P

\*\*\*\*\*  
 Peak Number 4 1-Decene, 9-methyl- Concentration Rank 5

R.T.	EstConc	Area	Relative to ISTD	R.T.
10.09	212.99 ug/l	35581800	1,4-Difluorobenzene	8.85

Hit#	of	Tentative ID	MW	MolForm	CAS#	Qual
1	5	1-Decene, 9-methyl-	154	C11H22	061142-78-7	58
2		1-Octene, 7-methyl-	126	C9H18	013151-06-9	53
3		Cyclopentane, methyl-	84	C6H12	000096-37-7	52
4		1-Hexene, 5-methyl-	98	C7H14	003524-73-0	49
5		Hexane, 3,4-dimethyl-	114	C8H18	000583-48-2	47



Data Path : Z:\VOASRV\HPCHEM1\MSVOA W\DATA\VW082118\  
 Data File : VW004844.D  
 Acq On : 21 Aug 2018 16:28  
 Operator : SY/AP  
 Sample : J4561-01  
 Misc : 4.53G/5ML/MSVOA W/SOIL  
 ALS Vial : 13 Sample Multiplier: 1

Instrument :  
 MSVOA\_W  
 ClientSampled :  
 H-R-P-T-WC-1-GRAB-7

Quant Method : Z:\VOASRV\HPCHEM1\MSVOA\_W\METHOD\82W081918S.M  
 Quant Title : SW846 8260

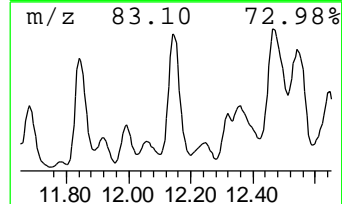
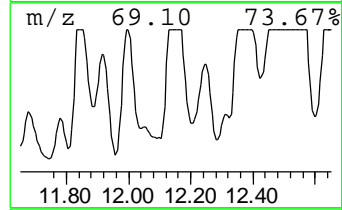
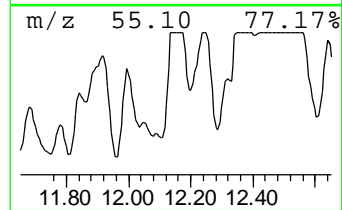
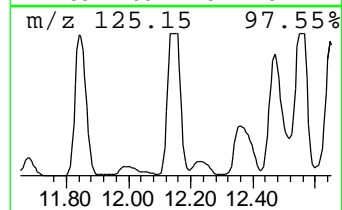
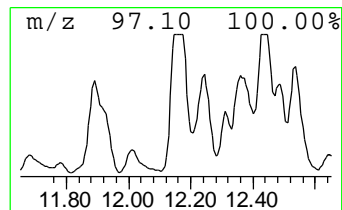
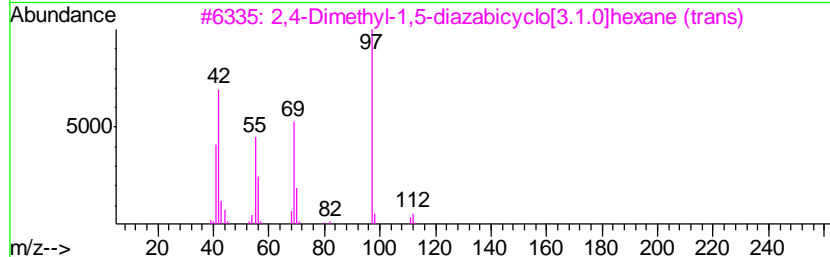
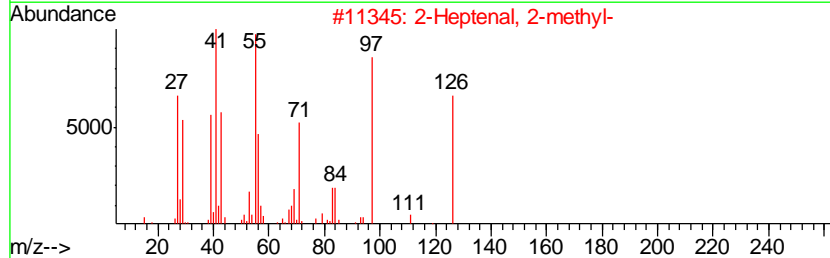
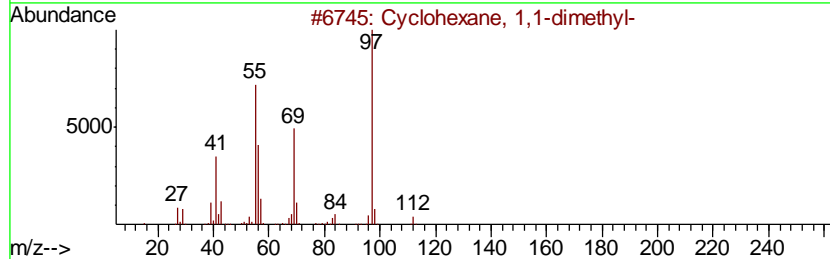
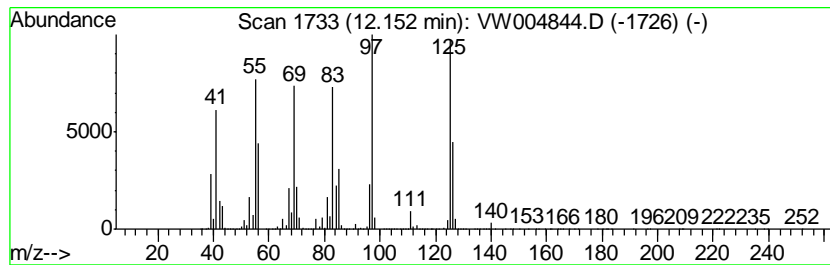
TIC Library : C:\DATABASE\NIST11.L  
 TIC Integration Parameters: LSCINT.P

\*\*\*\*\*  
 Peak Number 5 unknown12.15 Concentration Rank 10

R.T.	EstConc	Area	Relative to ISTD	R.T.
12.15	169.03 ug/l	230532000	Chlorobenzene-d5	11.63

Hit#	of	Tentative ID	MW	MolForm	CAS#	Qual
1	5	Cyclohexane, 1,1-dimethyl-	112	C8H16	000590-66-9	43
2		2-Heptenal, 2-methyl-	126	C8H14O	030567-26-1	38
3		2,4-Dimethyl-1,5-diazabicyclo[3....	112	C6H12N2	1000283-20-9	35
4		Cyclohexane, 1,2,3-trimethyl-	126	C9H18	001678-97-3	35
5		Cyclopentane, 1,1,3-trimethyl-	112	C8H16	004516-69-2	35



Data Path : Z:\VOASRV\HPCHEM1\MSVOA W\DATA\VW082118\  
 Data File : VW004844.D  
 Acq On : 21 Aug 2018 16:28  
 Operator : SY/AP  
 Sample : J4561-01  
 Misc : 4.53G/5ML/MSVOA W/SOIL  
 ALS Vial : 13 Sample Multiplier: 1

Instrument :  
 MSVOA\_W  
 ClientSampleID :  
 H-R-P-T-WC-1-GRAB-7

Quant Method : Z:\VOASRV\HPCHEM1\MSVOA\_W\METHOD\82W081918S.M  
 Quant Title : SW846 8260

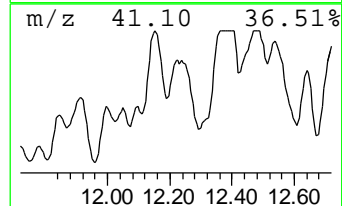
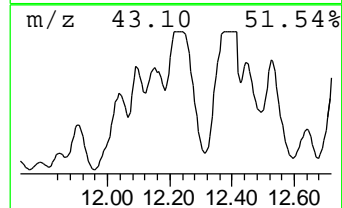
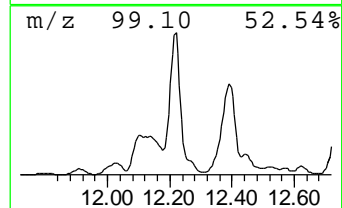
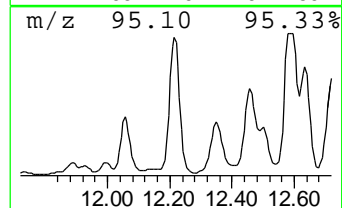
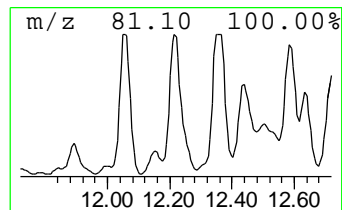
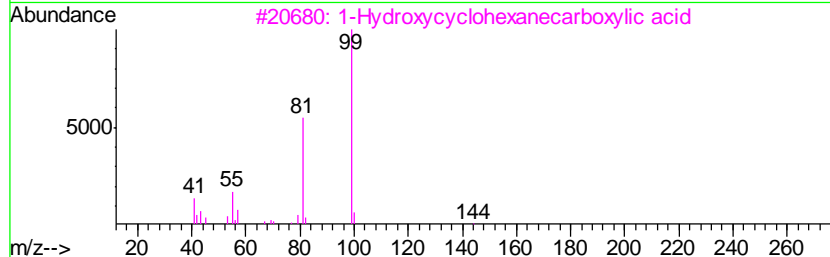
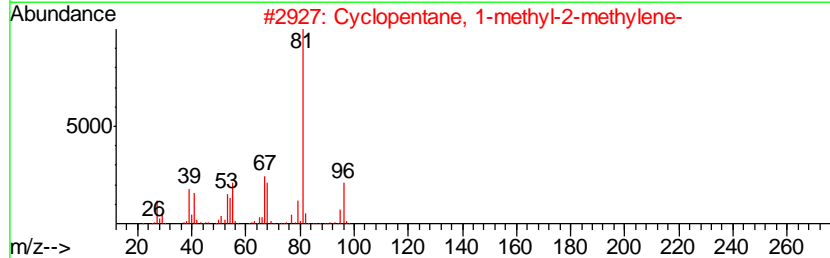
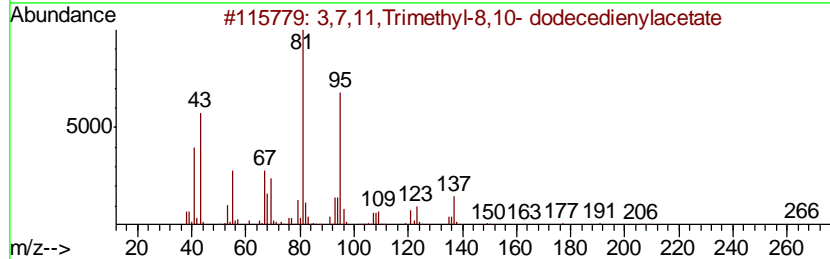
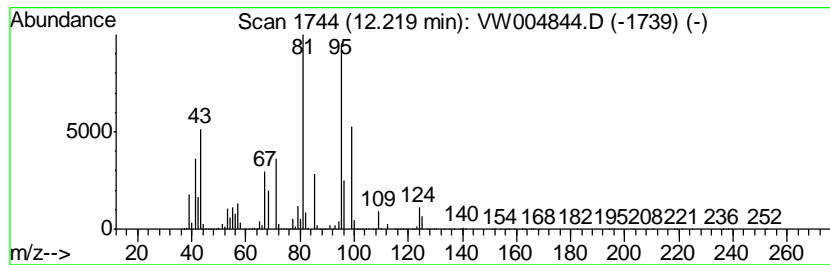
TIC Library : C:\DATABASE\NIST11.L  
 TIC Integration Parameters: LSCINT.P

\*\*\*\*\*  
 Peak Number 6 unknown12.22 Concentration Rank 7

R.T.	EstConc	Area	Relative to ISTD	R.T.
12.22	208.29 ug/l	284083000	Chlorobenzene-d5	11.63

Hit#	of	Tentative ID	MW	MolForm	CAS#	Qual
1	5	3,7,11,Trimethyl-8,10- dodecedie...	266	C17H30O2	1000374-10-3	47
2		Cyclopentane, 1-methyl-2-methylene-	96	C7H12	041158-41-2	35
3		1-Hydroxycyclohexanecarboxylic acid	144	C7H12O3	001123-28-0	27
4		4(1H)-Pyridone	95	C5H5NO	000108-96-3	27
5		Cyclopentene, 1,5-dimethyl-	96	C7H12	016491-15-9	25





Data Path : Z:\VOASRV\HPCHEM1\MSVOA W\DATA\VW082118\  
 Data File : VW004844.D  
 Acq On : 21 Aug 2018 16:28  
 Operator : SY/AP  
 Sample : J4561-01  
 Misc : 4.53G/5ML/MSVOA W/SOIL  
 ALS Vial : 13 Sample Multiplier: 1

Instrument :  
 MSVOA\_W  
 ClientSampleID :  
 H-R-P-T-WC-1-GRAB-7

Quant Method : Z:\VOASRV\HPCHEM1\MSVOA\_W\METHOD\82W081918S.M  
 Quant Title : SW846 8260

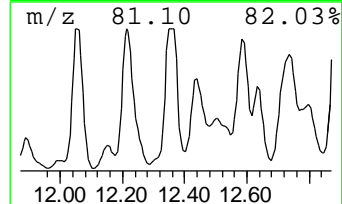
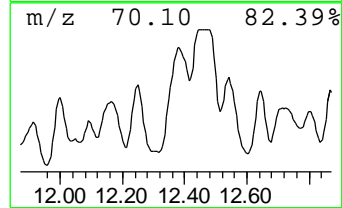
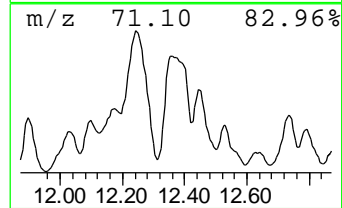
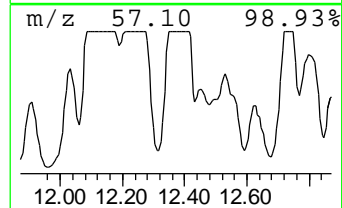
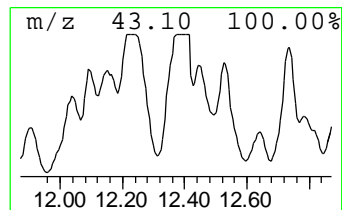
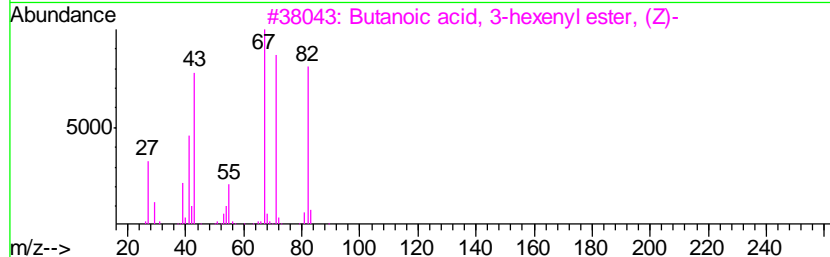
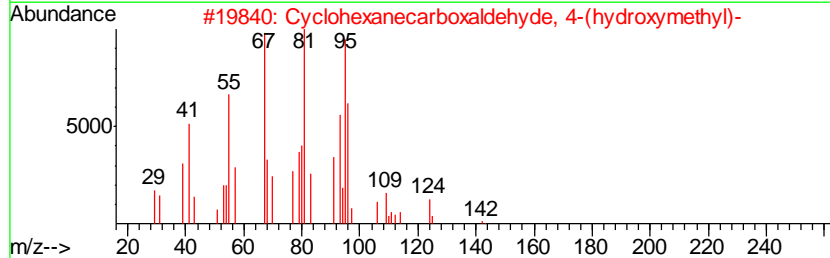
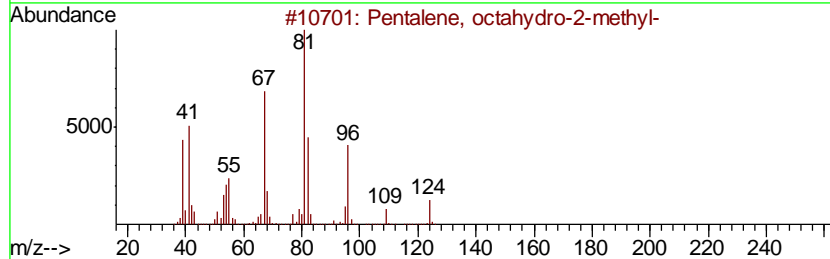
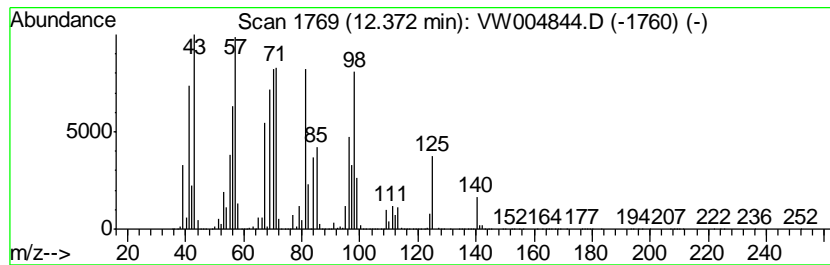
TIC Library : C:\DATABASE\NIST11.L  
 TIC Integration Parameters: LSCINT.P

\*\*\*\*\*  
 Peak Number 7 Pentalene, octahydro-2-methyl- Concentration Rank 3

R.T.	EstConc	Area	Relative to ISTD	R.T.
12.37	342.08 ug/l	466551000	Chlorobenzene-d5	11.63

Hit#	of	Tentative ID	MW	MolForm	CAS#	Qual
1	5	Pentalene, octahydro-2-methyl-	124	C9H16	003868-64-2	55
2		Cyclohexanecarboxaldehyde, 4-(hy...	142	C8H14O2	092385-32-5	38
3		Butanoic acid, 3-hexenyl ester, ...	170	C10H18O2	016491-36-4	35
4		3-Octyne, 2-methyl-	124	C9H16	055402-15-8	35
5		Cyclohexene, 3-propyl-	124	C9H16	003983-06-0	30



Data Path : Z:\VOASRV\HPCHEM1\MSVOA W\DATA\VW082118\  
 Data File : VW004844.D  
 Acq On : 21 Aug 2018 16:28  
 Operator : SY/AP  
 Sample : J4561-01  
 Misc : 4.53G/5ML/MSVOA W/SOIL  
 ALS Vial : 13 Sample Multiplier: 1

Instrument :  
 MSVOA\_W  
 ClientSampled :  
 H-R-P-T-WC-1-GRAB-7

Quant Method : Z:\VOASRV\HPCHEM1\MSVOA\_W\METHOD\82W081918S.M  
 Quant Title : SW846 8260

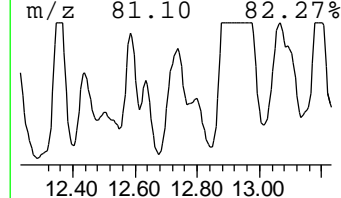
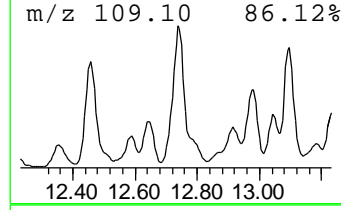
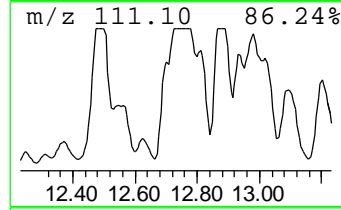
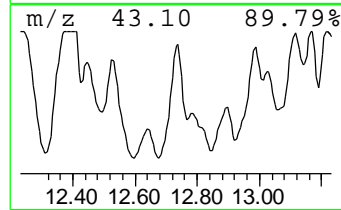
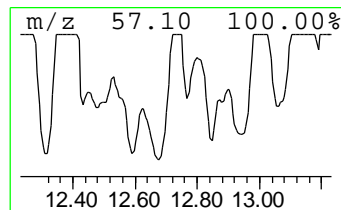
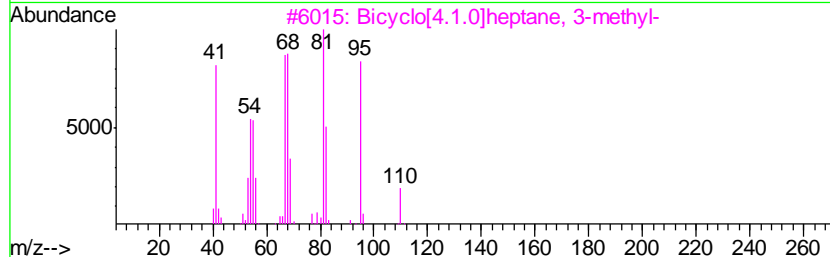
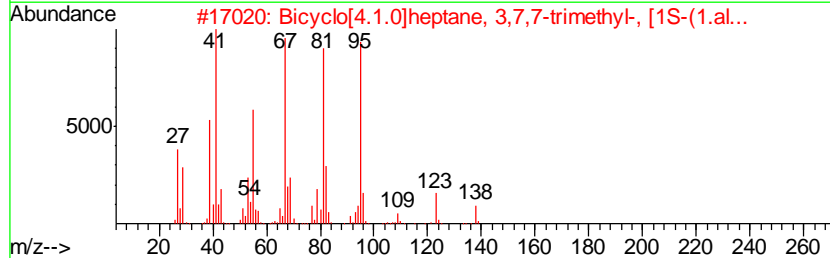
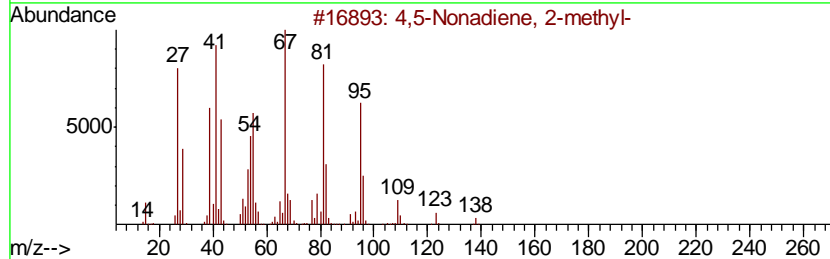
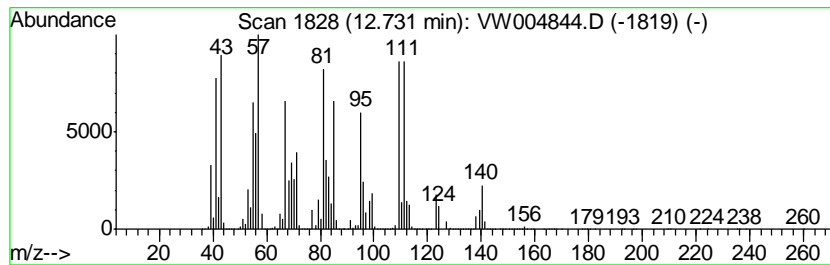
TIC Library : C:\DATABASE\NIST11.L  
 TIC Integration Parameters: LSCINT.P

\*\*\*\*\*  
 Peak Number 8 unknown12.73 Concentration Rank 1

R.T.	EstConc	Area	Relative to ISTD	R.T.
12.73	406.17 ug/l	420507000	1,4-Dichlorobenzene-d4	13.56

Hit#	of	Tentative ID	MW	MolForm	CAS#	Qual
1	5	4,5-Nonadiene, 2-methyl-	138	C10H18	055956-32-6	38
2		Bicyclo[4.1.0]heptane, 3,7,7-tri...	138	C10H18	006069-97-2	38
3		Bicyclo[4.1.0]heptane, 3-methyl-	110	C8H14	041977-47-3	30
4		1,4-Hexadiene, 5-methyl-	96	C7H12	000763-88-2	25
5		1,4-Hexadiene, 4-methyl-	96	C7H12	001116-90-1	25



Data Path : Z:\VOASRV\HPCHEM1\MSVOA W\DATA\VW082118\  
 Data File : VW004844.D  
 Acq On : 21 Aug 2018 16:28  
 Operator : SY/AP  
 Sample : J4561-01  
 Misc : 4.53G/5ML/MSVOA W/SOIL  
 ALS Vial : 13 Sample Multiplier: 1

Instrument :  
 MSVOA\_W  
 ClientSampleID :  
 H-R-P-T-WC-1-GRAB-7

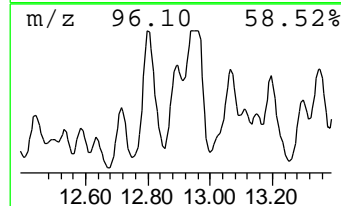
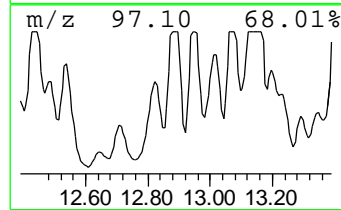
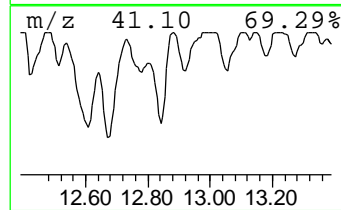
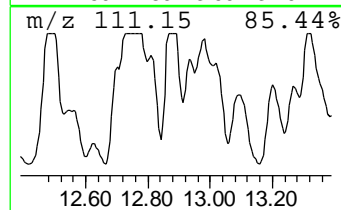
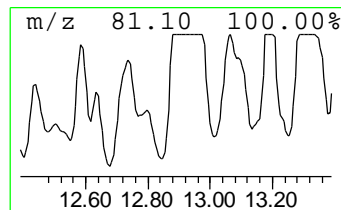
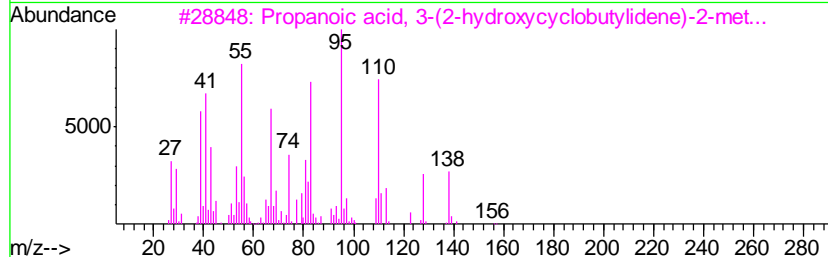
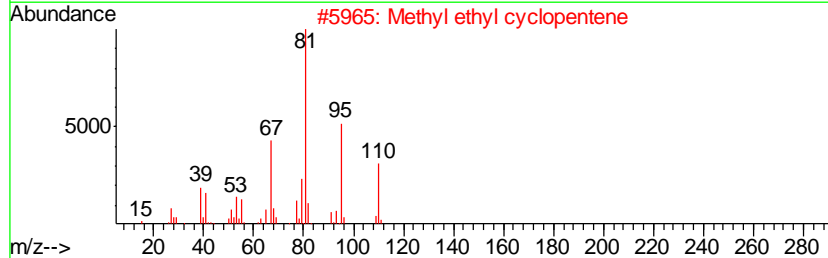
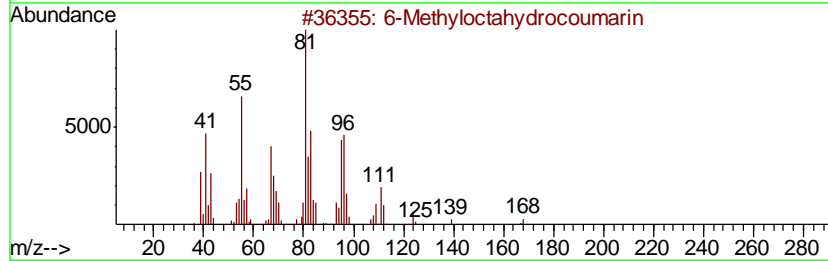
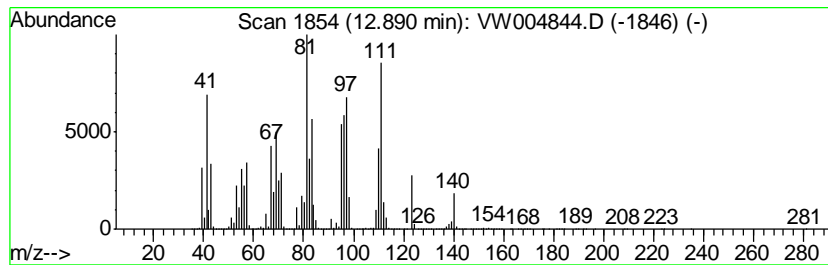
Quant Method : Z:\VOASRV\HPCHEM1\MSVOA\_W\METHOD\82W081918S.M  
 Quant Title : SW846 8260

TIC Library : C:\DATABASE\NIST11.L  
 TIC Integration Parameters: LSCINT.P

\*\*\*\*\*  
 Peak Number 9 unknown12.89 Concentration Rank 4

R.T.	EstConc	Area	Relative to ISTD	R.T.
12.89	330.38 ug/l	342049000	1,4-Dichlorobenzene-d4	13.56

Hit#	of	Tentative ID	MW	MolForm	CAS#	Qual
1	5	6-Methyloctahydrocoumarin	168	C10H16O2	080648-29-9	47
2		Methyl ethyl cyclopentene	110	C8H14	019780-56-4	46
3		Propanoic acid, 3-(2-hydroxycycl...	156	C8H12O3	110678-38-1	30
4		Cyclohexene, 1-pentyl-	152	C11H20	015232-85-6	27
5		1-Undecyne	152	C11H20	002243-98-3	27



Data Path : Z:\VOASRV\HPCHEM1\MSVOA W\DATA\VW082118\  
 Data File : VW004844.D  
 Acq On : 21 Aug 2018 16:28  
 Operator : SY/AP  
 Sample : J4561-01  
 Misc : 4.53G/5ML/MSVOA W/SOIL  
 ALS Vial : 13 Sample Multiplier: 1

Instrument :  
 MSVOA\_W  
 ClientSampleID :  
 H-R-P-T-WC-1-GRAB-7

Quant Method : Z:\VOASRV\HPCHEM1\MSVOA\_W\METHOD\82W081918S.M  
 Quant Title : SW846 8260

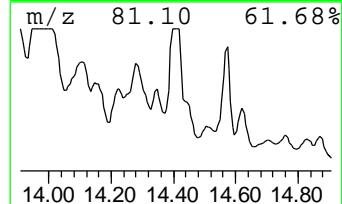
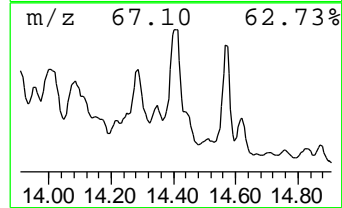
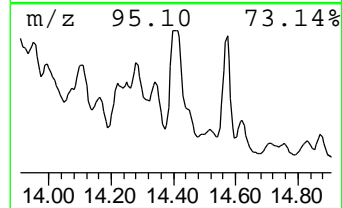
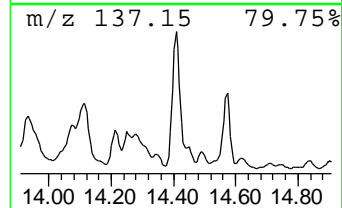
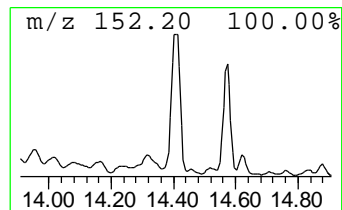
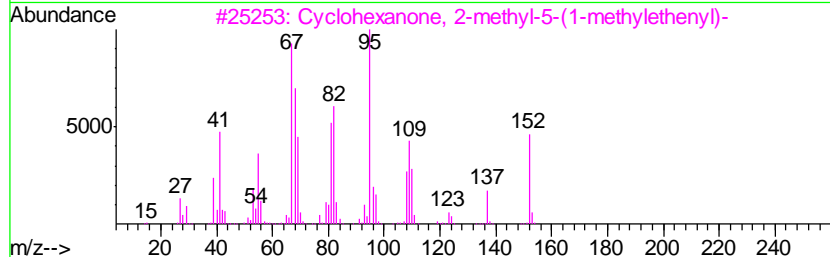
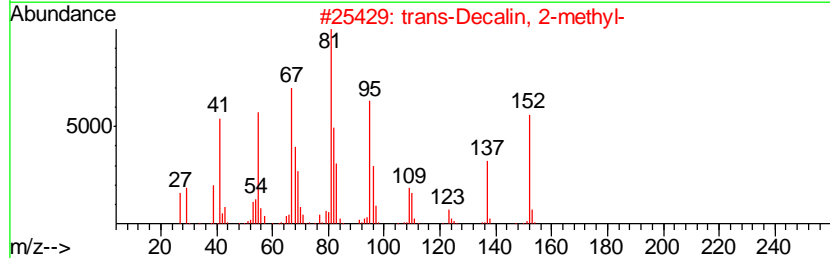
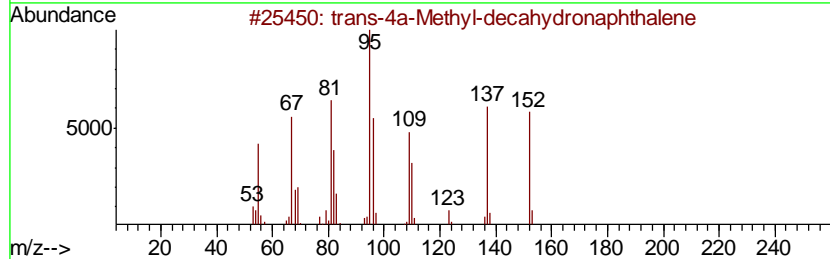
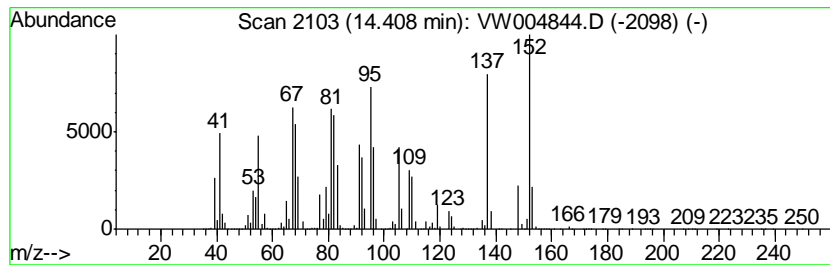
TIC Library : C:\DATABASE\NIST11.L  
 TIC Integration Parameters: LSCINT.P

\*\*\*\*\*  
 Peak Number 10 trans-4a-Methyl-decahydrona... Concentration Rank 8

R.T.	EstConc	Area	Relative to ISTD	R.T.
14.41	179.63 ug/l	185973000	1,4-Dichlorobenzene-d4	13.56

Hit#	of	Tentative ID	MW	MolForm	CAS#	Qual
1	5	trans-4a-Methyl-decahydronaphtha...	152	C11H20	002547-27-5	90
2		trans-Decalin, 2-methyl-	152	C11H20	1000152-47-3	68
3		Cyclohexanone, 2-methyl-5-(1-met...	152	C10H16O	007764-50-3	60
4		1-Adamantanol	152	C10H16O	000768-95-6	55
5		4,4-Dimethyl-2-propenylcyclopent...	152	C10H16O	068261-88-1	53



Data Path : Z:\VOASRV\HPCHEM1\MSVOA\_W\DATA\VW082118\  
 Data File : VW004844.D  
 Acq On : 21 Aug 2018 16:28  
 Operator : SY/AP  
 Sample : J4561-01  
 Misc : 4.53G/5ML/MSVOA\_W/SOIL  
 ALS Vial : 13 Sample Multiplier: 1

Instrument :  
 MSVOA\_W  
 ClientSampleId :  
 H-R-P-T-WC-1-GRAB-7

Quant Method : Z:\VOASRV\HPCHEM1\MSVOA\_W\METHOD\82W081918S.M  
 Quant Title : SW846 8260

TIC Library : C:\DATABASE\NIST11.L  
 TIC Integration Parameters: LSCINT.P

TIC Top Hit name	RT	EstConc	Units	Response	--Internal Standard--			
					#	RT	Resp	Conc
Hexane, 2,5-dimet...	9.34	210.5	ug/l	35170200	2	8.85	8352960	50.0
Cyclopentane, 1,2...	9.62	397.5	ug/l	66412800	2	8.85	8352960	50.0
1-Decene, 9-methyl-	10.09	213.0	ug/l	35581800	2	8.85	8352960	50.0
unknown12.15	12.15	169.0	ug/l	230532000	3	11.63	68193400	50.0
unknown12.22	12.22	208.3	ug/l	284083000	3	11.63	68193400	50.0
Pentalene, octahy...	12.37	342.1	ug/l	466551000	3	11.63	68193400	50.0
unknown12.73	12.73	406.2	ug/l	420507000	4	13.56	51765300	50.0
unknown12.89	12.89	330.4	ug/l	342049000	4	13.56	51765300	50.0
trans-4a-Methyl-d...	14.41	179.6	ug/l	185973000	4	13.56	51765300	50.0