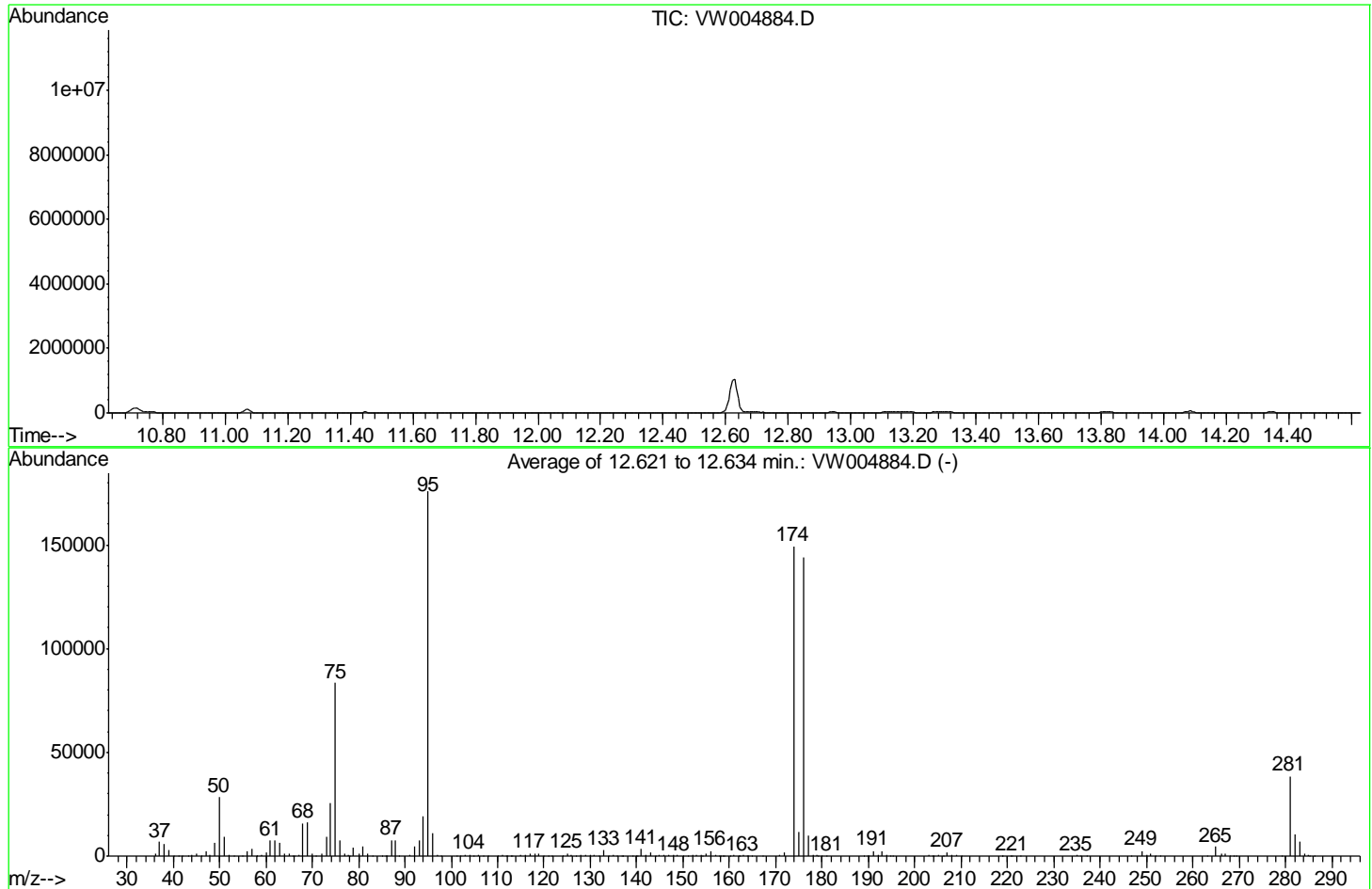


Data Path : Z:\VOASRV\HPCHEM1\MSVOA W\DATA\VW082218\  
 Data File : VW004884.D  
 Acq On : 22 Aug 2018 14:05  
 Operator : SY/AP  
 Sample : BFB81  
 Misc : 5.00G/10ML/MSVOA W/SOIL  
 ALS Vial : 1 Sample Multiplier: 1

Instrument :  
 MSVOA\_W  
 ClientSampleId :  
 BFB81

Integration File: LSCINT.P

Method : Z:\VOASRV\HPCHEM1\MSVOA\_W\METHOD\SOM2WLM082218S.M  
 Title : VOC Analysis  
 Last Update : Fri Aug 24 08:18:56 2018



AutoFind: Scans 1810, 1811, 1812; Background Corrected with Scan 1802

Target Mass	Rel. to Mass	Lower Limit%	Upper Limit%	Rel. Abn%	Raw Abn	Result Pass/Fail
50	95	15	40	16.1	28316	PASS
75	95	30	80	47.5	83496	PASS
95	95	100	100	100.0	175765	PASS
96	95	5	9	6.4	11281	PASS
173	174	0.00	2	0.0	0	PASS
174	95	50	120	85.0	149440	PASS
175	174	5	9	7.6	11380	PASS
176	174	95	101	96.4	144021	PASS
177	176	5	9	6.9	9939	PASS

m/z	Abundance
37.90	63.0
39.10	193.0
40.00	368.0
40.90	162.0
42.10	149.0
42.90	138.0
44.00	465.0
45.20	75.0
49.90	68.0
51.00	88.0
54.10	76.0
55.00	251.0
57.10	170.0
62.90	156.0
64.00	110.0
68.90	69.0
69.10	73.0
70.40	107.0
70.90	71.0
73.90	76.0
75.80	138.0
77.20	284.0
78.90	104.0
82.90	75.0
96.10	99.0
102.40	98.0
104.90	72.0
115.10	245.0
118.10	58.0
126.80	126.0
127.00	115.0
128.00	306.0
129.00	208.0
130.10	64.0
130.90	66.0
139.10	84.0
140.10	61.0
140.90	636.0
142.30	176.0
145.10	215.0
147.00	77.0
151.90	131.0
153.00	243.0
154.10	125.0
155.00	526.0
156.00	1296.0
157.00	127.0
207.00	251.0

**Instrument :**  
MSVOA\_W  
**ClientSampleId :**  
BFB81

m/z	Abundance
36.10	1554.0
37.10	7880.0
38.00	6896.0
39.10	3266.0
40.00	690.0
41.00	199.0
41.90	102.0
42.80	299.0
44.00	1204.0
45.00	1938.0
46.00	354.0
47.00	2501.0
48.00	969.0
49.00	6608.0
50.00	31144.0
51.10	10610.0
52.10	412.0
53.00	230.0
55.00	630.0
56.10	2322.0
57.00	3945.0
57.90	260.0
59.00	529.0
60.00	1892.0
61.00	8170.0
62.00	8159.0
63.00	7339.0
64.00	1571.0
65.00	1522.0
66.20	155.0
67.10	546.0
68.00	16728.0
69.00	17960.0
70.00	1228.0
70.80	162.0
72.00	1151.0
73.00	10633.0
74.00	27496.0
75.00	92128.0
76.00	8519.0
77.00	1591.0
77.90	790.0
78.90	5013.0
80.00	1257.0
81.00	5137.0
81.90	1273.0
83.00	186.0
85.00	85.0
86.10	440.0
87.00	7831.0
87.90	7867.0
88.80	598.0
91.00	571.0
92.00	5476.0
93.00	8241.0
94.00	20352.0
95.00	183744.0
96.00	12253.0
97.10	508.0
101.20	93.0
102.00	184.0
103.00	734.0
104.00	962.0
105.00	449.0
106.00	651.0
106.90	221.0
110.00	398.0
111.00	468.0
111.90	257.0
112.80	367.0
115.00	876.0
115.90	1007.0
116.90	1711.0
118.00	1116.0
119.00	1498.0
119.90	137.0
120.90	117.0
123.90	124.0
125.10	1714.0
125.80	378.0
127.10	349.0
128.00	1081.0
129.00	476.0
129.90	569.0
130.90	470.0
131.90	121.0
133.00	4256.0
135.00	645.0
135.90	85.0
136.90	204.0
139.10	459.0
139.90	295.0

Instrument :  
MSVOA\_W  
ClientSampleId :  
BFB81

141.00	3963.0
142.00	534.0
142.90	2063.0
144.00	154.0
144.90	1180.0
145.90	331.0
146.80	534.0
148.00	377.0
148.80	383.0
150.00	229.0
150.90	124.0
152.20	487.0
153.10	610.0
153.90	544.0
155.00	1820.0
156.10	3405.0
157.10	783.0
158.00	127.0
158.70	237.0
160.10	52.0
161.00	469.0
161.90	118.0
163.00	831.0
163.80	145.0
164.90	543.0
167.10	75.0
170.90	406.0
172.00	1790.0
173.90	142080.0
174.90	11285.0
175.90	138112.0
177.00	10583.0
178.00	476.0
178.90	887.0
179.90	258.0
181.10	165.0
189.10	363.0
189.80	122.0
191.00	3730.0
192.10	687.0
193.00	3770.0
194.00	852.0
195.10	419.0
203.00	424.0
203.80	120.0
205.00	978.0
206.00	264.0
207.10	2759.0
207.90	567.0
209.00	465.0
210.10	82.0
218.80	129.0
220.80	189.0
222.70	53.0
235.00	479.0
235.90	262.0
237.10	76.0
246.80	100.0
248.90	3400.0
250.00	1015.0
250.90	1214.0
252.00	444.0
252.90	321.0
263.10	104.0
265.00	6190.0
266.10	1496.0
267.00	1649.0
268.00	299.0
268.80	74.0
269.20	74.0
279.20	422.0
281.00	50496.0
282.10	14619.0
283.00	9377.0
284.00	1669.0
285.10	728.0
286.10	97.0

Instrument :  
MSVOA\_W  
ClientSampleId :  
BFB81

m/z	Abundance
36.00	1250.0
37.00	7731.0
38.00	6811.0
39.10	3071.0
40.00	431.0
41.00	177.0
41.90	67.0
43.10	248.0
44.00	1238.0
45.00	1699.0
46.10	238.0
47.00	2499.0
47.90	943.0
49.00	7158.0
50.00	31488.0
51.00	9964.0
52.20	624.0
53.00	272.0
54.10	66.0
55.00	593.0
56.00	2519.0
57.00	4156.0
58.10	159.0
59.00	363.0
60.00	1835.0
61.00	8487.0
62.00	7889.0
63.00	6838.0
64.10	1518.0
65.10	1323.0
65.90	156.0
66.10	157.0
67.10	579.0
68.00	18048.0
69.00	17760.0
70.00	1641.0
72.00	987.0
73.00	10484.0
74.00	28600.0
75.00	89288.0
76.10	7737.0
77.00	1677.0
77.80	952.0
78.90	4851.0
80.00	1459.0
80.90	5176.0
81.90	893.0
83.10	176.0
84.90	69.0
85.80	334.0
87.00	8686.0
87.90	7867.0
90.90	609.0
92.00	5337.0
93.00	8337.0
94.00	21296.0
95.00	196864.0
96.00	12436.0
97.00	472.0
97.80	72.0
101.90	99.0
102.90	412.0
103.90	1025.0
104.90	349.0
105.90	775.0
107.00	156.0
108.00	60.0
110.00	249.0
110.90	277.0
111.90	252.0
112.80	203.0
113.20	179.0
115.00	975.0
116.00	908.0
116.90	1566.0
117.90	1003.0
118.90	1356.0
119.80	164.0
121.00	150.0
123.90	167.0
125.00	1326.0
125.90	384.0
127.00	417.0
128.00	1111.0
128.90	603.0
130.00	704.0
130.90	406.0
131.90	124.0
132.90	2729.0
133.80	643.0
134.90	498.0
135.80	74.0

Instrument :  
MSVOA\_W  
ClientSampleId :  
BFB81

137.00	273.0
138.90	340.0
140.00	276.0
141.00	4130.0
141.90	540.0
142.90	2428.0
143.80	187.0
144.10	185.0
144.90	1014.0
145.90	457.0
146.90	497.0
147.90	454.0
148.90	394.0
149.90	160.0
150.90	193.0
152.10	532.0
153.10	876.0
154.00	565.0
155.10	1921.0
156.00	4172.0
157.00	888.0
158.10	118.0
158.90	364.0
160.90	374.0
162.00	159.0
162.90	521.0
164.00	97.0
164.80	244.0
170.80	401.0
171.90	1873.0
173.90	167616.0
174.90	12316.0
175.90	161344.0
176.90	10773.0
177.90	476.0
178.90	793.0
180.00	164.0
181.00	105.0
189.00	302.0
190.10	130.0
191.00	2623.0
192.00	493.0
193.00	2585.0
194.00	513.0
194.80	287.0
195.20	280.0
203.10	402.0
203.90	80.0
205.00	609.0
206.10	296.0
207.10	2348.0
208.00	507.0
209.00	344.0
219.00	133.0
221.00	188.0
234.90	342.0
236.00	73.0
237.10	84.0
246.70	60.0
249.00	2264.0
250.00	701.0
250.90	990.0
252.00	278.0
252.90	153.0
265.00	4713.0
266.10	1169.0
267.00	1223.0
268.00	336.0
269.30	93.0
279.00	284.0
281.00	41608.0
282.10	11405.0
283.10	7038.0
284.10	1522.0
284.90	518.0

**Instrument :**  
MSVOA\_W  
**ClientSampleId :**  
BFB81

m/z	Abundance
36.00	963.0
37.10	5056.0
38.10	4653.0
39.00	2204.0
39.90	418.0
41.20	217.0
42.20	110.0
43.10	176.0
43.90	1086.0
45.00	954.0
45.90	172.0
47.10	1697.0
48.10	704.0
49.00	4655.0
50.00	22520.0
51.00	7745.0
52.00	332.0
53.00	159.0
54.10	81.0
54.90	342.0
56.00	1644.0
57.00	3295.0
58.00	144.0
59.00	265.0
60.00	1248.0
61.00	5908.0
62.00	5919.0
63.00	4891.0
64.00	1277.0
65.00	1002.0
66.20	77.0
67.10	495.0
68.00	12459.0
69.00	13015.0
70.00	940.0
70.90	173.0
72.10	663.0
73.00	6861.0
74.00	21656.0
75.00	69072.0
76.00	6107.0
77.10	1479.0
78.10	871.0
78.90	3512.0
80.00	1085.0
80.90	3787.0
81.90	913.0
83.00	295.0
86.00	294.0
87.00	6292.0
87.90	6677.0
88.70	227.0
91.00	555.0
92.00	3869.0
93.00	6275.0
94.00	16464.0
95.00	146688.0
96.00	9452.0
97.00	292.0
97.80	76.0
101.90	82.0
103.00	385.0
104.00	640.0
104.90	349.0
105.90	516.0
106.90	133.0
110.00	152.0
110.90	251.0
112.10	93.0
113.00	225.0
115.00	983.0
116.10	473.0
117.00	882.0
117.90	756.0
118.80	954.0
119.80	91.0
120.80	159.0
121.80	52.0
123.90	147.0
125.00	584.0
125.90	446.0
127.00	365.0
128.00	1018.0
129.10	663.0
130.00	666.0
131.00	304.0
133.00	1226.0
134.90	397.0
136.70	236.0
139.00	342.0
140.20	293.0
141.00	3949.0

Instrument :  
MSVOA\_W  
ClientSampleId :  
BFB81

142.10	507.0
143.00	1580.0
143.90	135.0
145.00	704.0
145.90	302.0
146.90	329.0
147.90	330.0
148.90	178.0
150.00	248.0
151.00	233.0
152.00	767.0
153.00	962.0
154.20	422.0
155.10	2058.0
156.00	4073.0
157.00	799.0
157.80	108.0
158.90	223.0
160.80	195.0
161.10	218.0
162.20	54.0
162.90	387.0
164.10	54.0
164.70	85.0
170.80	321.0
171.90	1570.0
173.90	138624.0
175.00	10541.0
175.90	132608.0
177.00	8463.0
178.10	402.0
179.10	356.0
179.90	102.0
189.00	150.0
190.20	82.0
191.00	1346.0
191.90	259.0
192.90	1233.0
193.90	347.0
195.10	117.0
202.90	299.0
204.10	126.0
205.00	443.0
207.10	1410.0
207.90	264.0
209.00	138.0
219.00	103.0
221.10	201.0
234.80	194.0
249.00	1417.0
250.10	423.0
251.00	534.0
252.00	196.0
252.90	117.0
265.10	2291.0
266.10	592.0
266.80	620.0
267.90	116.0
269.20	52.0
279.10	157.0
281.10	23328.0
282.10	5879.0
283.00	3712.0
284.00	776.0
285.20	220.0
286.10	53.0

**Instrument :**  
MSVOA\_W  
**ClientSampleId :**  
BFB81