

Data Path : Z:\VOASRV\HPCHEM1\MSVOA W\DATA\VW082219\  
 Data File : VW012120.D  
 Acq On : 22 Aug 2019 19:18  
 Operator : SY/VA  
 Sample : K4462-01  
 Misc : 5.09G/5ML/MSVOA W/SOIL  
 ALS Vial : 24 Sample Multiplier: 1

Instrument :  
 MSVOA\_W  
 ClientSampleId :  
 SB-46-9.5-10.0

Quant Time: Aug 23 08:16:18 2019  
 Quant Method : Z:\VOASRV\HPCHEM1\MSVOA\_W\METHOD\82W072719S.M  
 Quant Title : SW846 8260  
 QLast Update : Sat Jul 27 00:23:30 2019  
 Response via : Initial Calibration

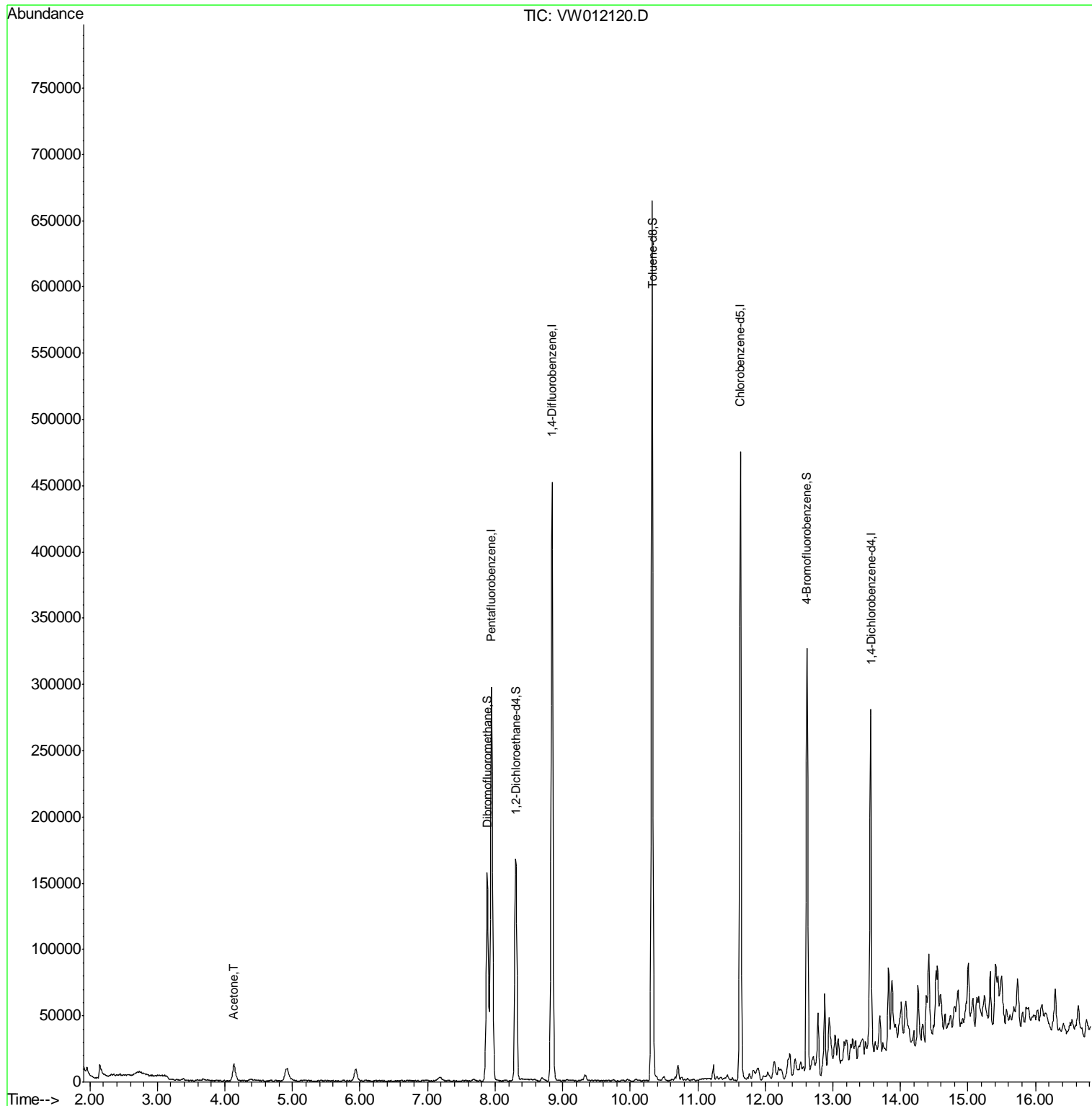
Internal Standards	R.T.	QIon	Response	Conc	Units	Dev(Min)
1) Pentafluorobenzene	7.95	168	214533	50.00	ug/l	0.00
34) 1,4-Difluorobenzene	8.84	114	348966	50.00	ug/l	0.00
63) Chlorobenzene-d5	11.63	117	248797	50.00	ug/l	0.00
72) 1,4-Dichlorobenzene-d4	13.56	152	65737	50.00	ug/l	0.00
System Monitoring Compounds						
33) 1,2-Dichloroethane-d4	8.31	65	134723	54.69	ug/l	0.00
Spiked Amount	50.000		Recovery	=	109.38%	
35) Dibromofluoromethane	7.88	113	109297	55.83	ug/l	0.00
Spiked Amount	50.000		Recovery	=	111.66%	
50) Toluene-d8	10.32	98	411833	51.38	ug/l	0.00
Spiked Amount	50.000		Recovery	=	102.76%	
62) 4-Bromofluorobenzene	12.62	95	101351	35.47	ug/l	0.00
Spiked Amount	50.000		Recovery	=	70.94%	
Target Compounds						
16) Acetone	4.14	43	23495	29.983	ug/l	98

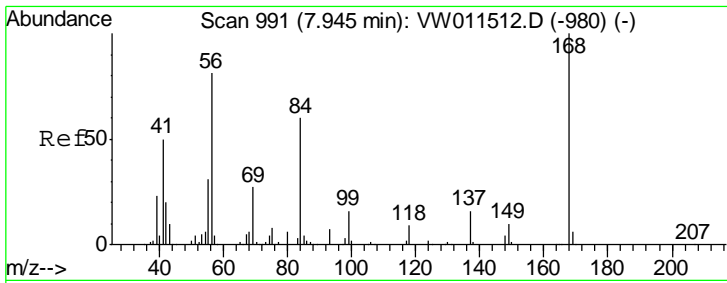
(#) = qualifier out of range (m) = manual integration (+) = signals summed

Data Path : Z:\VOASRV\HPCHEM1\MSVOA W\DATA\VW082219\  
 Data File : VW012120.D  
 Acq On : 22 Aug 2019 19:18  
 Operator : SY/VA  
 Sample : K4462-01  
 Misc : 5.09G/5ML/MSVOA W/SOIL  
 ALS Vial : 24 Sample Multiplier: 1

Instrument :  
 MSVOA\_W  
 ClientSampleId :  
 SB-46-9.5-10.0

Quant Time: Aug 23 08:16:18 2019  
 Quant Method : Z:\VOASRV\HPCHEM1\MSVOA\_W\METHOD\82W072719S.M  
 Quant Title : SW846 8260  
 QLast Update : Sat Jul 27 00:23:30 2019  
 Response via : Initial Calibration

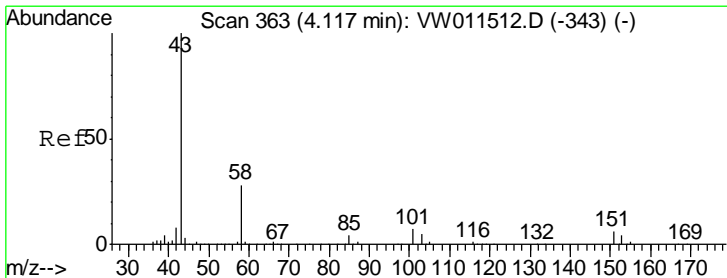
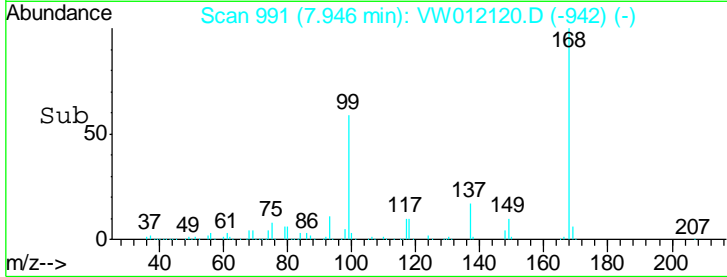
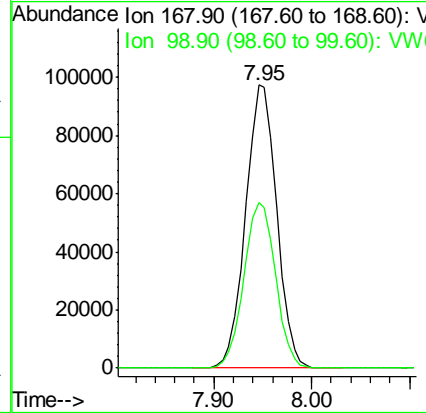
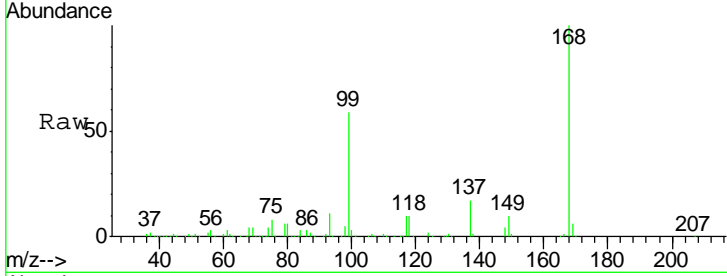




#1  
 Pentafluorobenzene  
 Concen: 50.000 ug/l  
 RT: 7.95 min Scan# 991  
 Delta R.T. 0.00 min  
 Lab File: VW012120.D  
 Acq: 22 Aug 2019 19:18

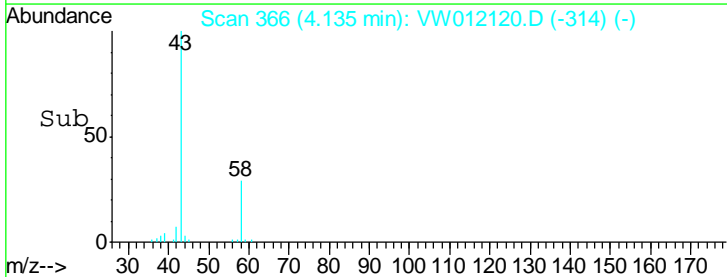
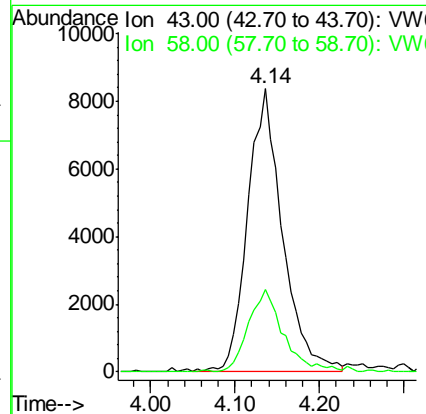
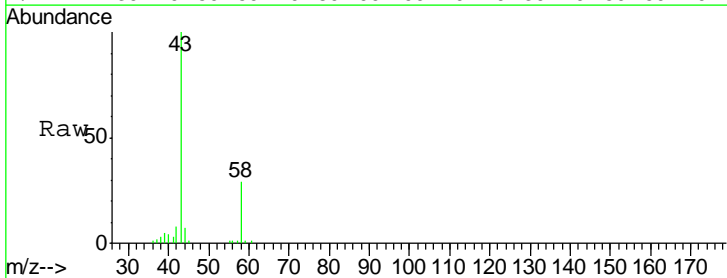
Instrument :  
 MSVOA\_W  
 ClientSampled :  
 SB-46-9.5-10.0

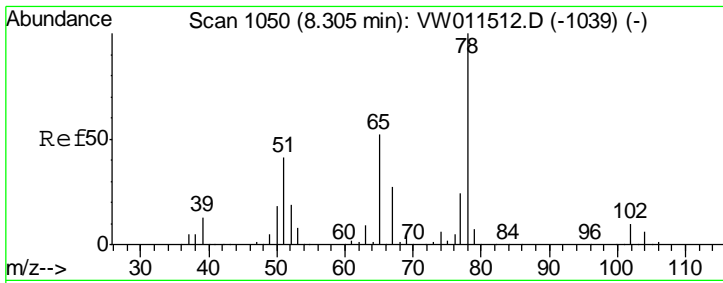
Tgt Ion: 168 Resp: 214533  
 Ion Ratio Lower Upper  
 168 100  
 99 58.7 48.2 72.4



#16  
 Acetone  
 Concen: 29.983 ug/l  
 RT: 4.14 min Scan# 366  
 Delta R.T. 0.02 min  
 Lab File: VW012120.D  
 Acq: 22 Aug 2019 19:18

Tgt Ion: 43 Resp: 23495  
 Ion Ratio Lower Upper  
 43 100  
 58 29.0 22.3 33.5



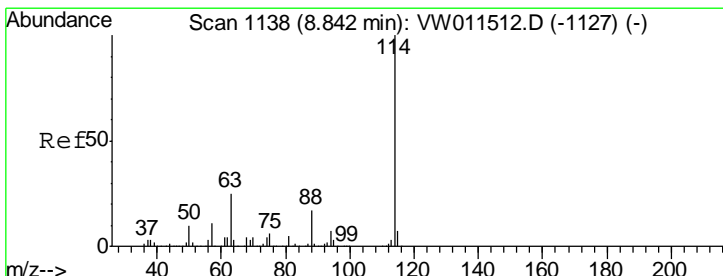
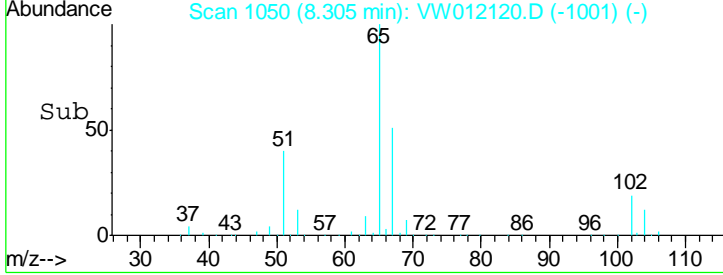
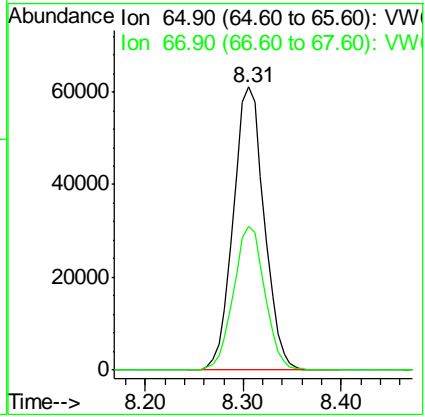
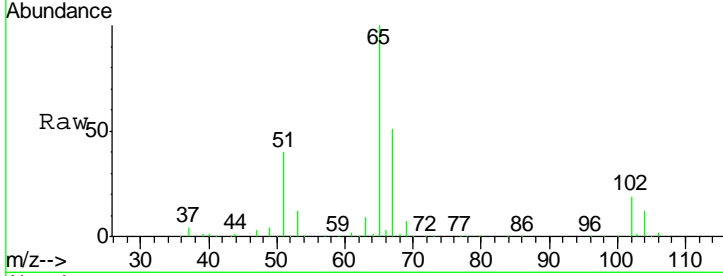


#33  
 1,2-Dichloroethane-d4  
 Concen: 54.689 ug/l  
 RT: 8.31 min Scan# 1050  
 Delta R.T. 0.00 min  
 Lab File: VW012120.D  
 Acq: 22 Aug 2019 19:18

**Instrument :**  
 MSVOA\_W  
**ClientSampled :**  
 SB-46-9.5-10.0

Tgt Ion: 65 Resp: 134723

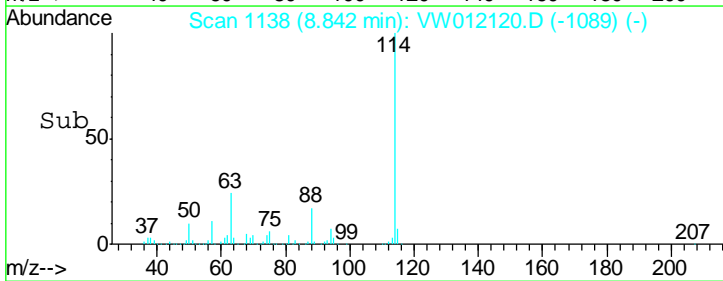
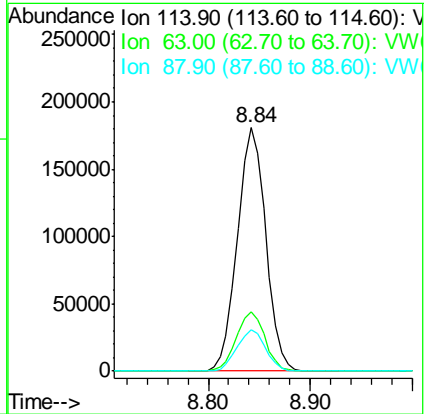
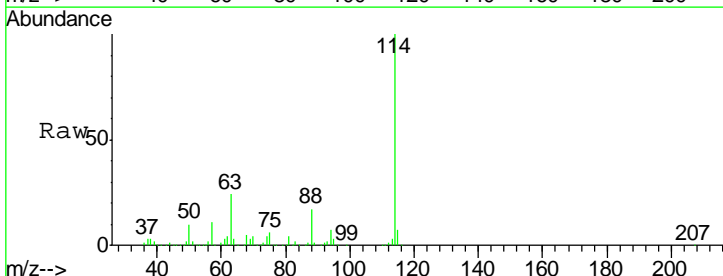
Ion	Ratio	Lower	Upper
65	100		
67	51.2	0.0	105.2

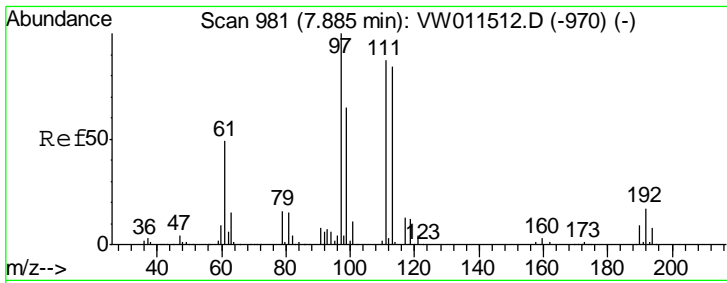


#34  
 1,4-Difluorobenzene  
 Concen: 50.000 ug/l  
 RT: 8.84 min Scan# 1138  
 Delta R.T. 0.00 min  
 Lab File: VW012120.D  
 Acq: 22 Aug 2019 19:18

Tgt Ion: 114 Resp: 348966

Ion	Ratio	Lower	Upper
114	100		
63	24.3	0.0	49.2
88	16.8	0.0	33.8

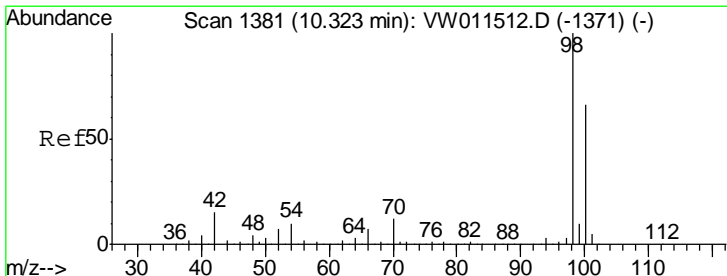
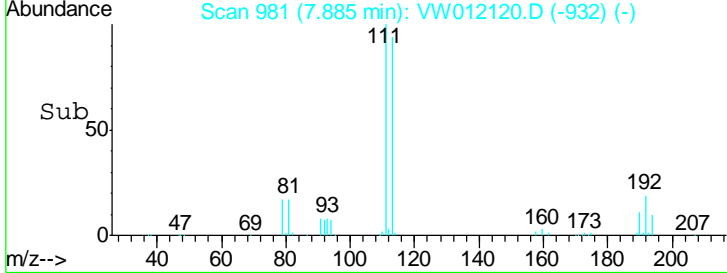
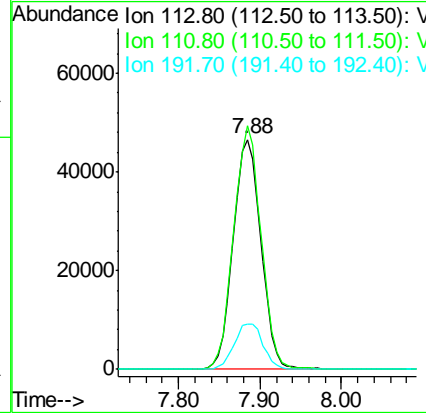
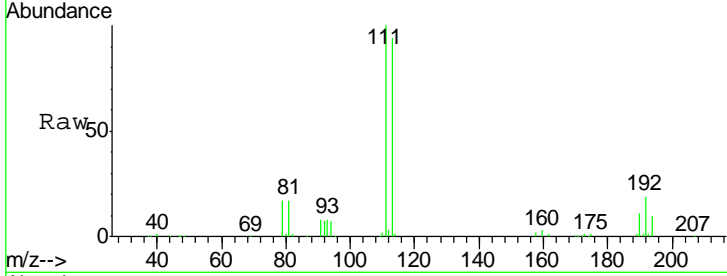




#35  
 Dibromofluoromethane  
 Concen: 55.828 ug/l  
 RT: 7.88 min Scan# 981  
 Delta R.T. 0.00 min  
 Lab File: VW012120.D  
 Acq: 22 Aug 2019 19:18

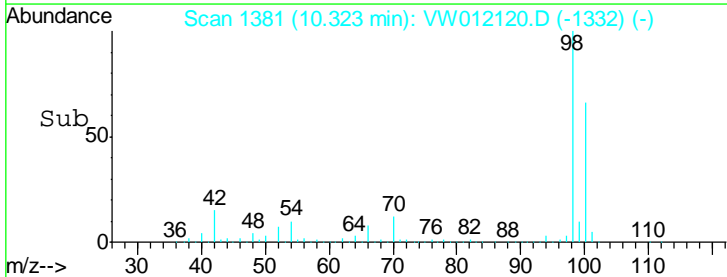
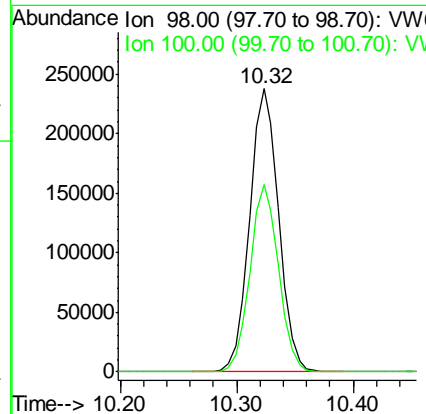
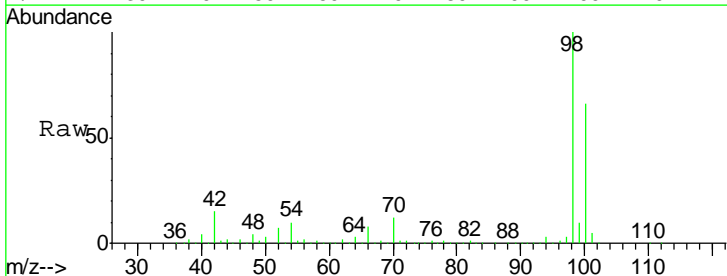
Instrument :  
 MSVOA\_W  
 ClientSampled :  
 SB-46-9.5-10.0

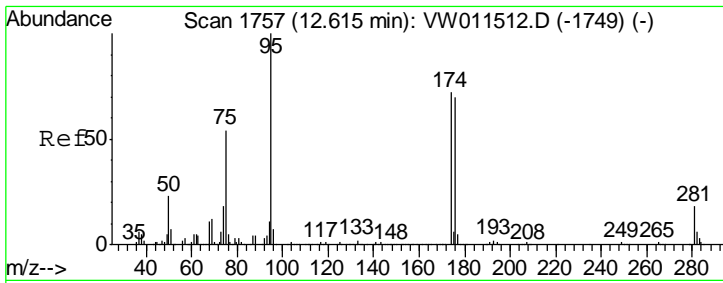
Tgt Ion	Resp	Lower	Upper
113	109297		
111	104.4	82.7	124.1
192	20.6	16.1	24.1



#50  
 Toluene-d8  
 Concen: 51.379 ug/l  
 RT: 10.32 min Scan# 1381  
 Delta R.T. 0.00 min  
 Lab File: VW012120.D  
 Acq: 22 Aug 2019 19:18

Tgt Ion	Resp	Lower	Upper
98	411833		
100	65.3	52.7	79.1

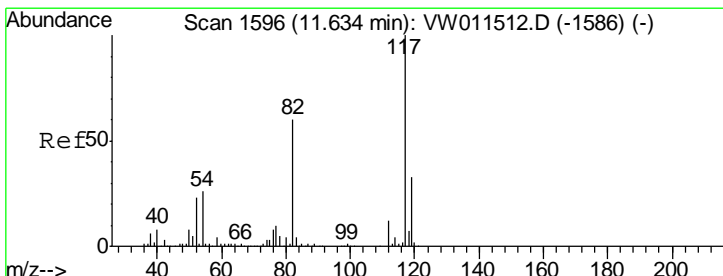
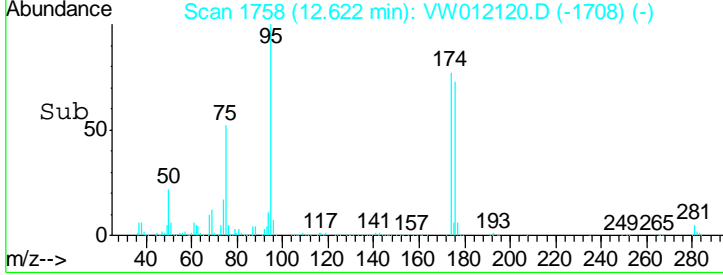
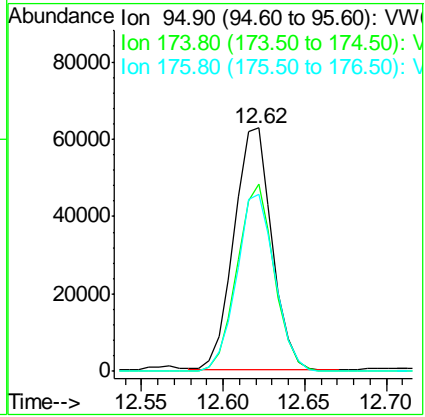
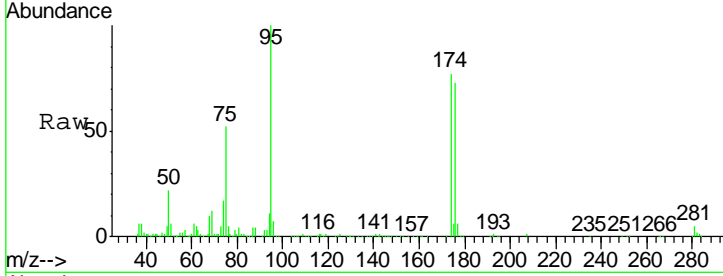




#62  
 4-Bromofluorobenzene  
 Concen: 35.465 ug/l  
 RT: 12.62 min Scan# 1758  
 Delta R.T. 0.01 min  
 Lab File: VW012120.D  
 Acq: 22 Aug 2019 19:18

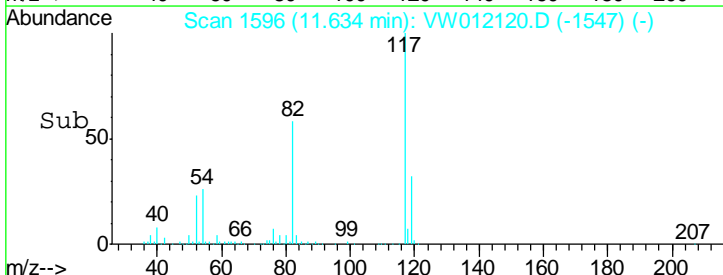
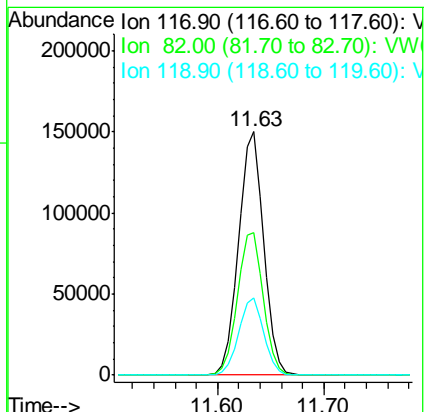
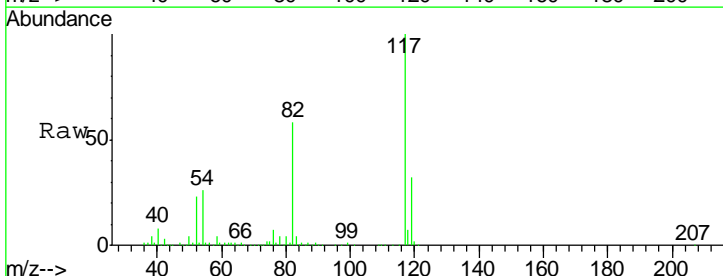
Instrument : MSVOA\_W  
 ClientSampled : SB-46-9.5-10.0

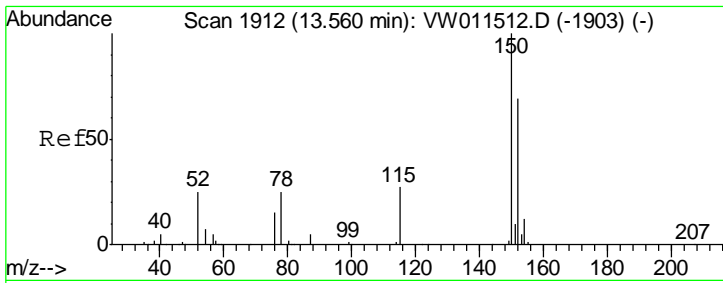
Tgt Ion	Resp	Lower	Upper
95	101351		
174	75.5	0.0	150.2
176	73.5	0.0	144.4



#63  
 Chlorobenzene-d5  
 Concen: 50.000 ug/l  
 RT: 11.63 min Scan# 1596  
 Delta R.T. 0.00 min  
 Lab File: VW012120.D  
 Acq: 22 Aug 2019 19:18

Tgt Ion	Resp	Lower	Upper
117	248797		
82	58.4	47.9	71.9
119	31.6	26.2	39.2





#72  
 1,4-Dichlorobenzene-d4  
 Concen: 50.000 ug/l  
 RT: 13.56 min Scan# 1912  
 Delta R.T. 0.00 min  
 Lab File: VW012120.D  
 Acq: 22 Aug 2019 19:18

Instrument : MSVOA\_W  
 ClientSampled : SB-46-9.5-10.0

Tot Ion	Resp	Lower	Upper
152	65737		
152	100		
115	60.3	30.5	91.5
150	155.0	0.0	352.6

