

Data Path : Z:\VOASRV\HPCHEM1\MSVOA W\DATA\VW082219\
 Data File : VW012113.D
 Acq On : 22 Aug 2019 16:17
 Operator : SY/VA
 Sample : K4461-07
 Misc : 5.01G/5ML/MSVOA W/SOIL
 ALS Vial : 17 Sample Multiplier: 1

Instrument :
 MSVOA_W
 ClientSampleId :
 SB-04-11.5-12.0

Integration Parameters: RTEINT.P

Integrator: RTE
 Smoothing : ON
 Sampling : 1
 Start Thrs: 0.2
 Stop Thrs : 0

Filtering: 5
 Min Area: 3 % of largest Peak
 Max Peaks: 100
 Peak Location: TOP

If leading or trailing edge < 100 prefer < Baseline drop else tangent >
 Peak separation: 5

Method : Z:\VOASRV\HPCHEM1\MSVOA_W\METHOD\82W072719S.M
 Title : SW846 8260

Signal : TIC

peak #	R.T. min	first scan	max scan	last scan	PK TY	peak height	corr. area	corr. % max.	% of total
1	2.148	35	40	48	rBV	12832	28931	2.18%	0.431%
2	4.916	481	494	507	rBV	13138	48900	3.69%	0.728%
3	5.934	654	661	671	rBV4	5751	16295	1.23%	0.243%
4	7.885	972	981	986	rBV	162522	397027	29.98%	5.914%
5	7.945	986	991	1002	rVB	319014	692732	52.31%	10.319%
6	8.305	1038	1050	1061	rBV2	179976	400332	30.23%	5.964%
7	8.842	1129	1138	1151	rBV	497850	975293	73.64%	14.528%
8	10.323	1373	1381	1396	rBV	763587	1324352	100.00%	19.728%
9	10.707	1437	1444	1450	rBV	15875	29295	2.21%	0.436%
10	11.628	1587	1595	1605	rBV	624418	1068259	80.66%	15.913%
11	12.615	1749	1757	1770	rBV	475865	800354	60.43%	11.922%
12	13.560	1905	1912	1919	rBV	558980	902593	68.15%	13.445%
13	14.072	1991	1996	2002	rVB2	18413	28655	2.16%	0.427%

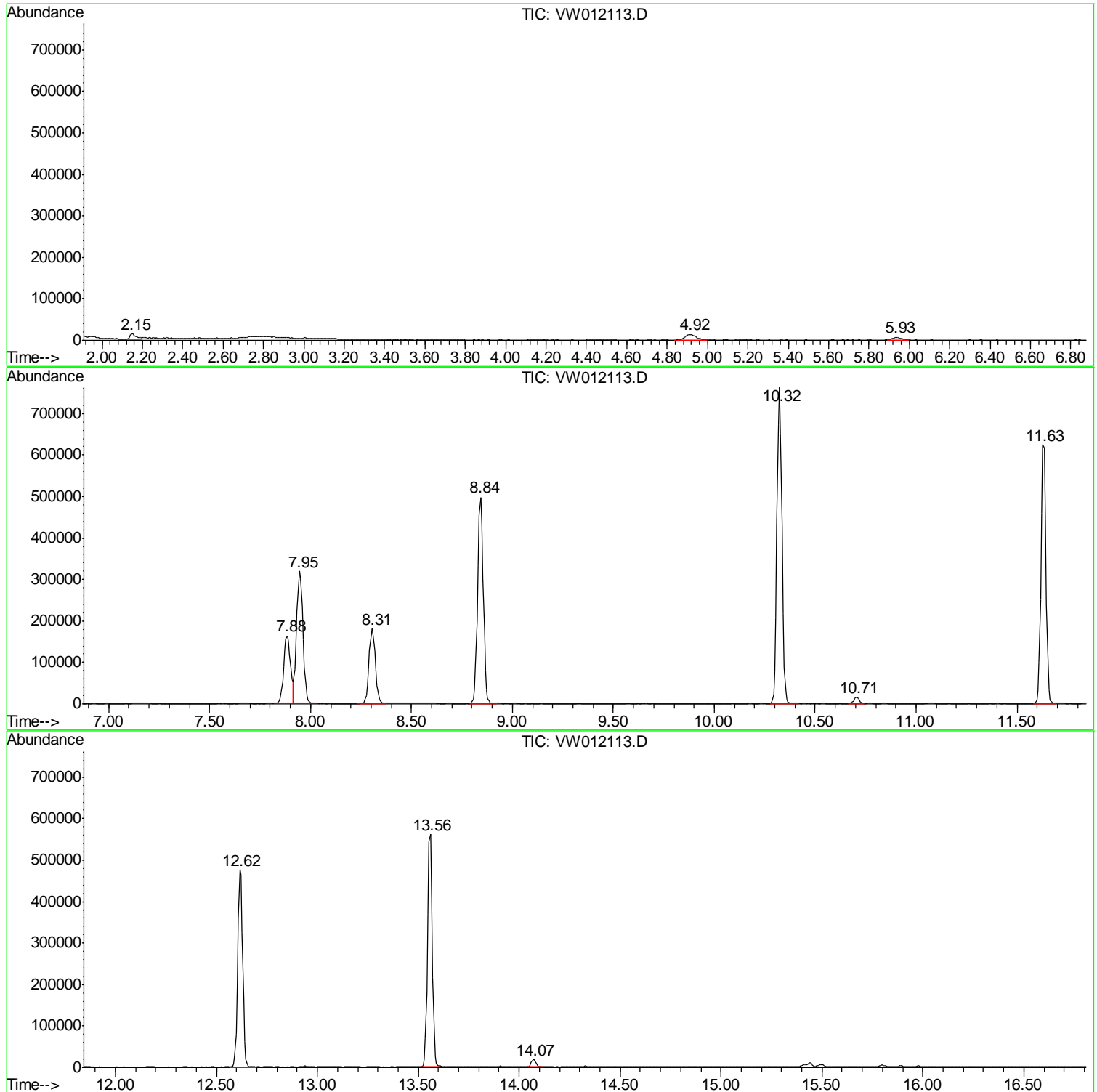
Sum of corrected areas: 6713018

Data Path : Z:\VOASRV\HPCHEM1\MSVOA W\DATA\VW082219\
Data File : VW012113.D
Acq On : 22 Aug 2019 16:17
Operator : SY/VA
Sample : K4461-07
Misc : 5.01G/5ML/MSVOA W/SOIL
ALS Vial : 17 Sample Multiplier: 1

Instrument :
MSVOA_W
ClientSampled :
SB-04-11.5-12.0

Quant Method : Z:\VOASRV\HPCHEM1\MSVOA_W\METHOD\82W072719S.M
Quant Title : SW846 8260

TIC Library : C:\DATABASE\NIST11.L
TIC Integration Parameters: LSCINT.P



Data Path : Z:\VOASRV\HPCHEM1\MSVOA_W\DATA\VW082219\
Data File : VW012113.D
Acq On : 22 Aug 2019 16:17
Operator : SY/VA
Sample : K4461-07
Misc : 5.01G/5ML/MSVOA_W/SOIL
ALS Vial : 17 Sample Multiplier: 1

Instrument :
MSVOA_W
ClientSampleId :
SB-04-11.5-12.0

Quant Method : Z:\VOASRV\HPCHEM1\MSVOA_W\METHOD\82W072719S.M
Quant Title : SW846 8260

TIC Library : C:\DATABASE\NIST11.L
TIC Integration Parameters: LSCINT.P

No Library Search Compounds Detected

Data Path : Z:\VOASRV\HPCHEM1\MSVOA_W\DATA\VW082219\
Data File : VW012113.D
Acq On : 22 Aug 2019 16:17
Operator : SY/VA
Sample : K4461-07
Misc : 5.01G/5ML/MSVOA_W/SOIL
ALS Vial : 17 Sample Multiplier: 1

Instrument :
MSVOA_W
ClientSampleId :
SB-04-11.5-12.0

Quant Method : Z:\VOASRV\HPCHEM1\MSVOA_W\METHOD\82W072719S.M
Quant Title : SW846 8260

TIC Library : C:\DATABASE\NIST11.L
TIC Integration Parameters: LSCINT.P

TIC Top Hit name	RT	EstConc	Units	Response	--Internal Standard--			
					#	RT	Resp	Conc
