

Data Path : Z:\VOASRV\HPCHEM1\MSVOA W\DATA\VW082220\  
 Data File : VW016311.D  
 Acq On : 21 Aug 2020 17:28  
 Operator : SY/VA  
 Sample : L3734-06  
 Misc : 7.30G/5ML/MSVOA W/SOIL  
 ALS Vial : 16 Sample Multiplier: 1

Instrument :  
 MSVOA\_W  
 ClientSampleId :  
 EROC-BF-1E

Quant Time: Aug 22 06:50:24 2020  
 Quant Method : Z:\VOASRV\HPCHEM1\MSVOA\_W\METHOD\82W081420S.M  
 Quant Title : SW846 8260  
 QLast Update : Mon Aug 17 08:01:41 2020  
 Response via : Initial Calibration

Internal Standards	R.T.	QIon	Response	Conc	Units	Dev(Min)
1) Pentafluorobenzene	7.95	168	189614	50.00	ug/l	0.00
34) 1,4-Difluorobenzene	8.84	114	335050	50.00	ug/l	0.00
63) Chlorobenzene-d5	11.63	117	286117	50.00	ug/l	0.00
72) 1,4-Dichlorobenzene-d4	13.56	152	103501	50.00	ug/l	0.00

System Monitoring Compounds

33) 1,2-Dichloroethane-d4	8.31	65	90840	49.13	ug/l	0.00
Spiked Amount				50.000		
			Recovery	=	98.26%	
35) Dibromofluoromethane	7.88	113	32199	15.58	ug/l	0.00
Spiked Amount				50.000		
			Recovery	=	31.16%	
50) Toluene-d8	10.32	98	395889	49.47	ug/l	0.00
Spiked Amount				50.000		
			Recovery	=	98.94%	
62) 4-Bromofluorobenzene	12.62	95	124988	43.70	ug/l	0.00
Spiked Amount				50.000		
			Recovery	=	87.40%	

Target Compounds

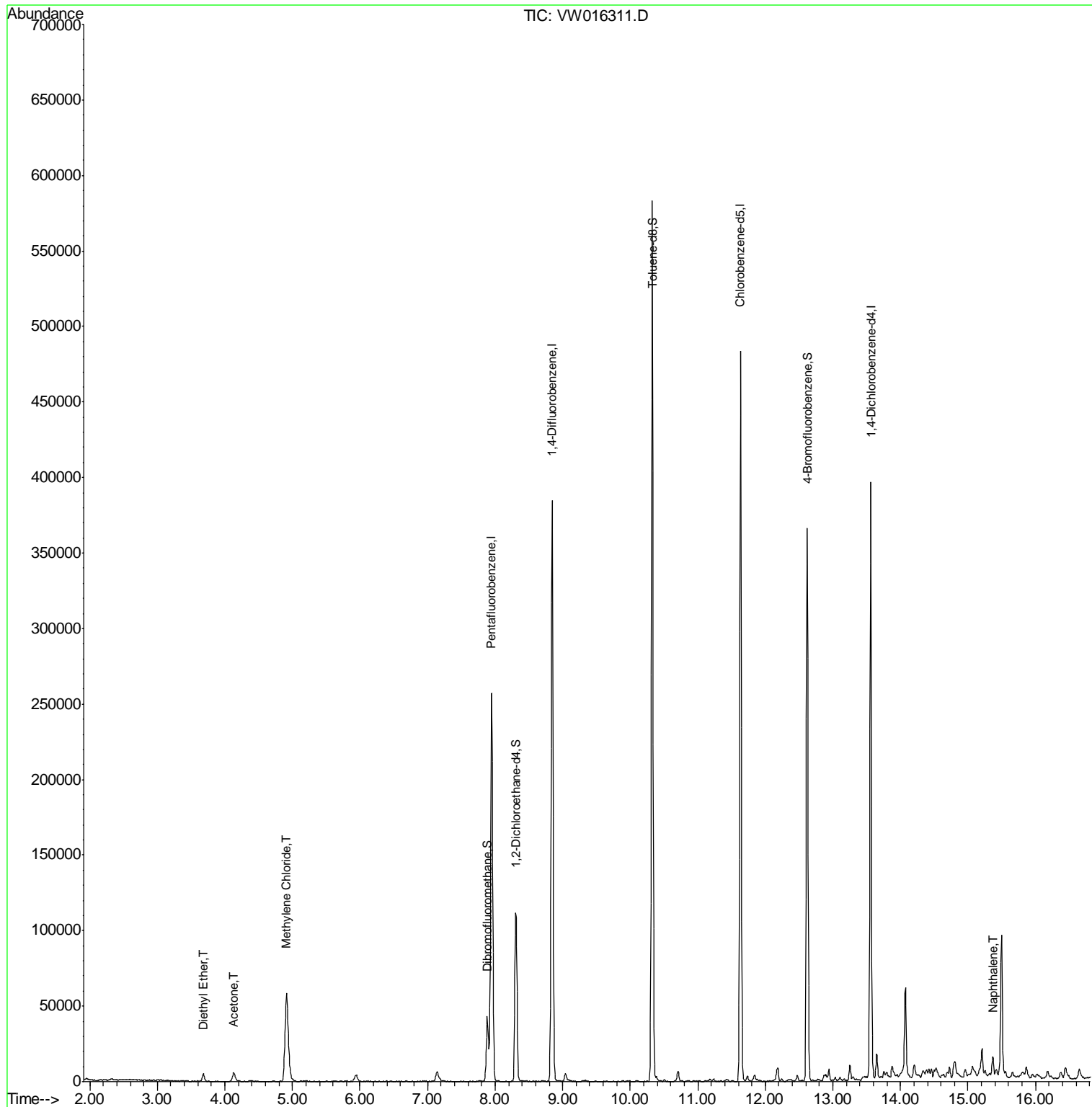
					Qvalue
8) Diethyl Ether	3.67	74	2750	2.817	ug/l 99
16) Acetone	4.13	43	11120	31.392	ug/l 99
20) Methylene Chloride	4.91	84	52695	21.090	ug/l 96
95) Naphthalene	15.37	128	12194	6.550	ug/l 99

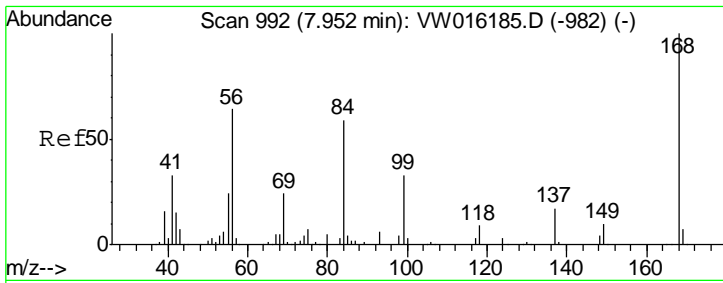
(#) = qualifier out of range (m) = manual integration (+) = signals summed

Data Path : Z:\VOASRV\HPCHEM1\MSVOA W\DATA\VW082220\  
 Data File : VW016311.D  
 Acq On : 21 Aug 2020 17:28  
 Operator : SY/VA  
 Sample : L3734-06  
 Misc : 7.30G/5ML/MSVOA W/SOIL  
 ALS Vial : 16 Sample Multiplier: 1

Instrument :  
 MSVOA\_W  
 ClientSampleId :  
 EROC-BF-1E

Quant Time: Aug 22 06:50:24 2020  
 Quant Method : Z:\VOASRV\HPCHEM1\MSVOA\_W\METHOD\82W081420S.M  
 Quant Title : SW846 8260  
 QLast Update : Mon Aug 17 08:01:41 2020  
 Response via : Initial Calibration

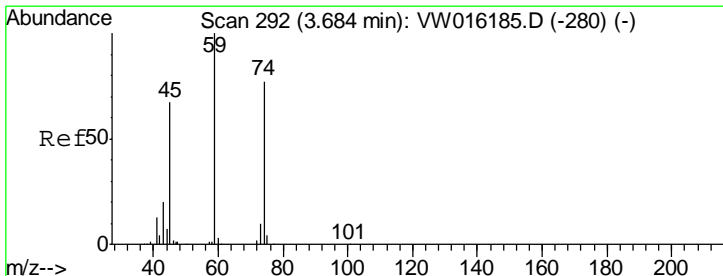
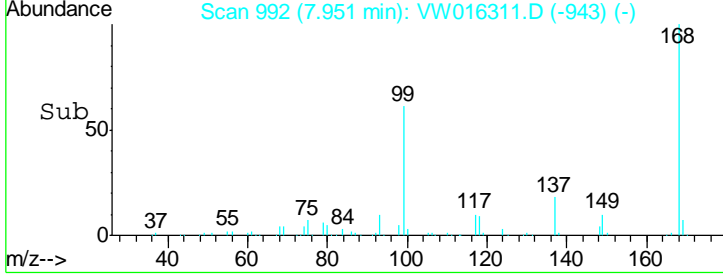
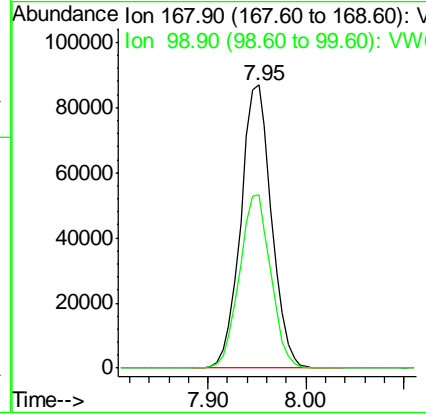
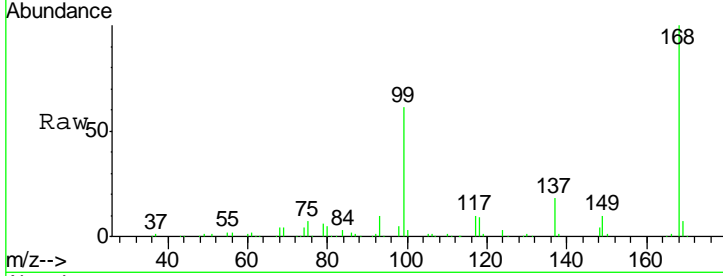




#1  
 Pentafluorobenzene  
 Concen: 50.000 ug/l  
 RT: 7.95 min Scan# 992  
 Delta R.T. -0.00 min  
 Lab File: VW016311.D  
 Acq: 21 Aug 2020 17:28

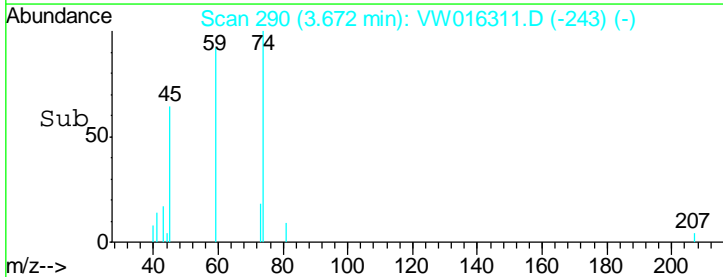
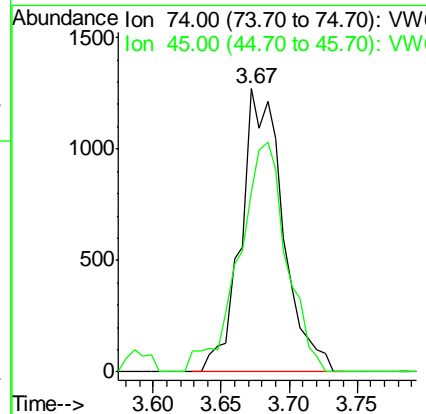
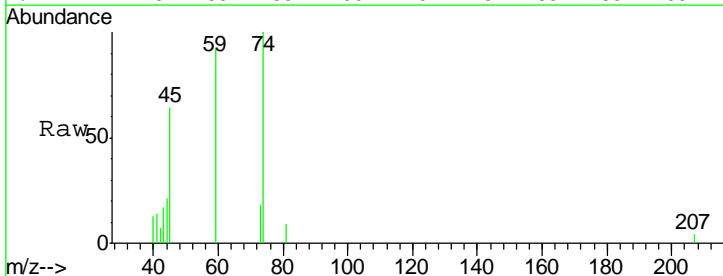
Instrument : MSVOA\_W  
 ClientSampled : EROC-BF-1E

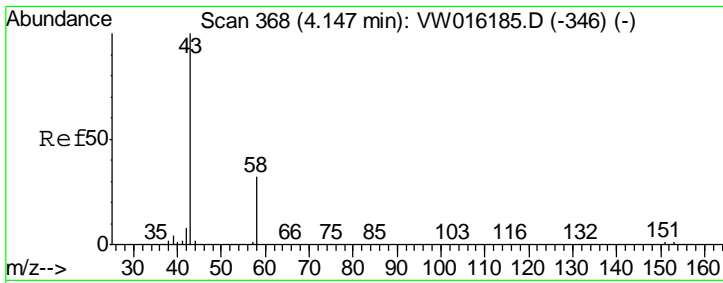
Tgt Ion: 168 Resp: 189614  
 Ion Ratio Lower Upper  
 168 100  
 99 61.0 48.3 72.5



#8  
 Diethyl Ether  
 Concen: 2.817 ug/l  
 RT: 3.67 min Scan# 290  
 Delta R.T. -0.01 min  
 Lab File: VW016311.D  
 Acq: 21 Aug 2020 17:28

Tgt Ion: 74 Resp: 2750  
 Ion Ratio Lower Upper  
 74 100  
 45 91.1 45.9 137.7

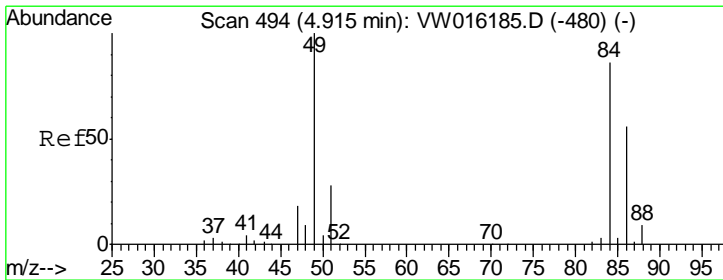
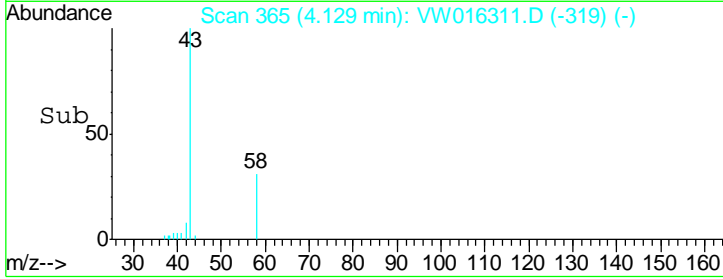
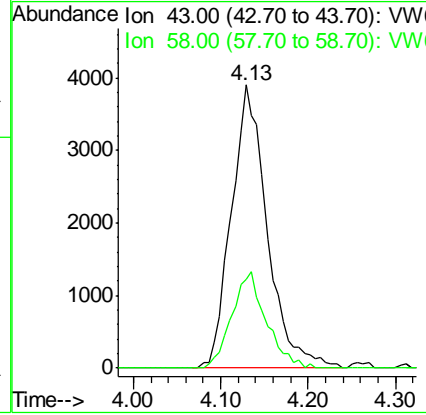
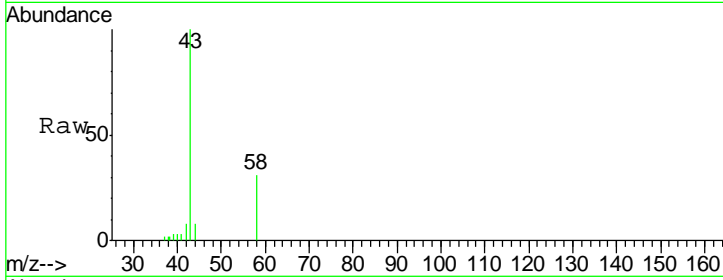




#16  
 Acetone  
 Concen: 31.392 ug/l  
 RT: 4.13 min Scan# 365  
 Delta R.T. -0.02 min  
 Lab File: VW016311.D  
 Acq: 21 Aug 2020 17:28

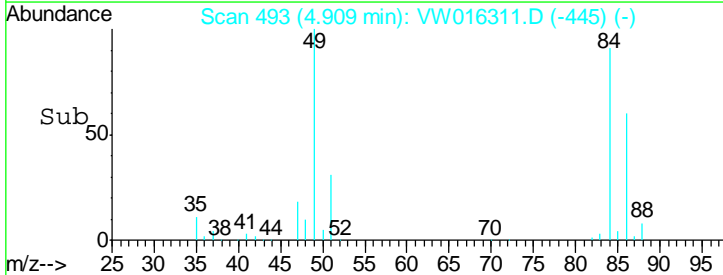
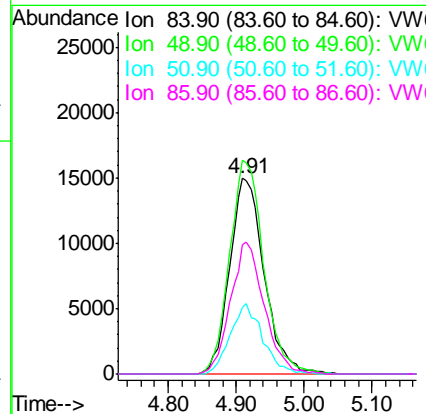
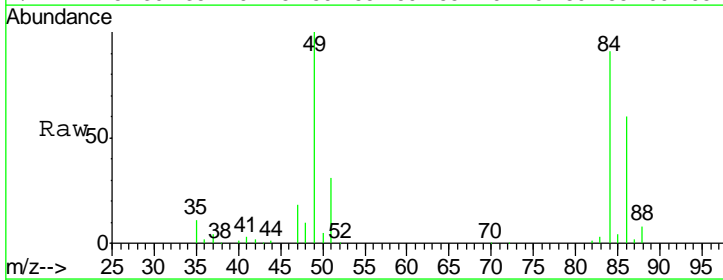
Instrument :  
 MSVOA\_W  
 ClientSampled :  
 EROC-BF-1E

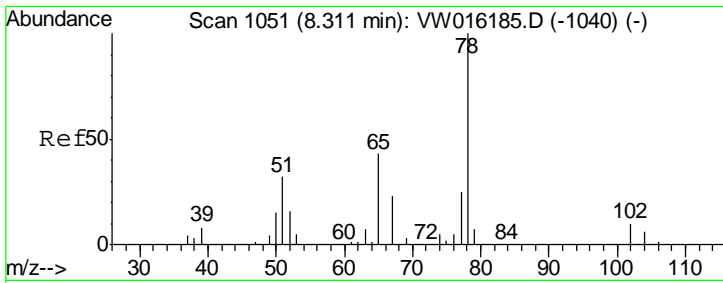
Tgt Ion	Resp	Lower	Upper
43	11120		
58	31.5	25.8	38.6



#20  
 Methylene Chloride  
 Concen: 21.090 ug/l  
 RT: 4.91 min Scan# 493  
 Delta R.T. -0.01 min  
 Lab File: VW016311.D  
 Acq: 21 Aug 2020 17:28

Tgt Ion	Resp	Lower	Upper
84	52695		
49	109.4	93.4	140.2
51	34.3	26.6	40.0
86	66.1	52.2	78.2

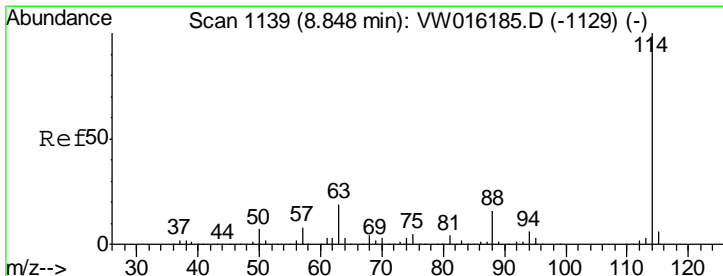
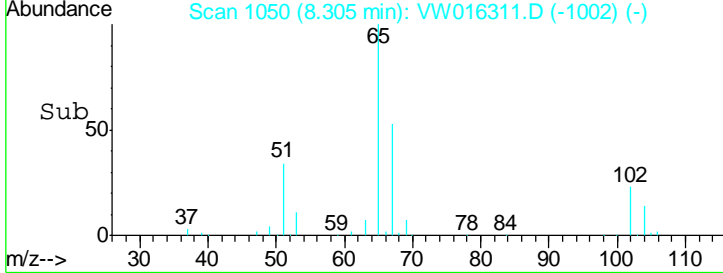
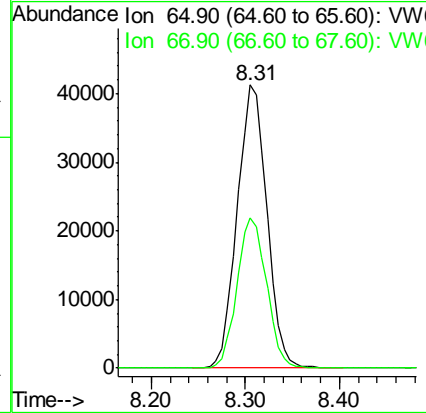
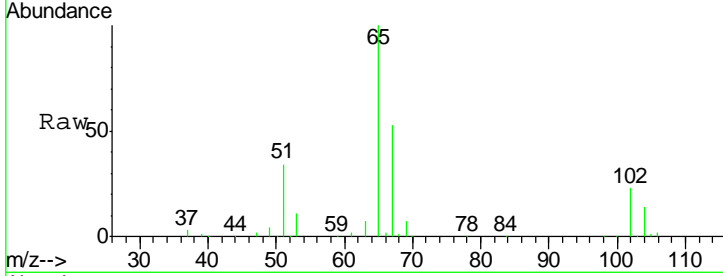




#33  
 1,2-Dichloroethane-d4  
 Concen: 49.126 ug/l  
 RT: 8.31 min Scan# 1050  
 Delta R.T. -0.01 min  
 Lab File: VW016311.D  
 Acq: 21 Aug 2020 17:28

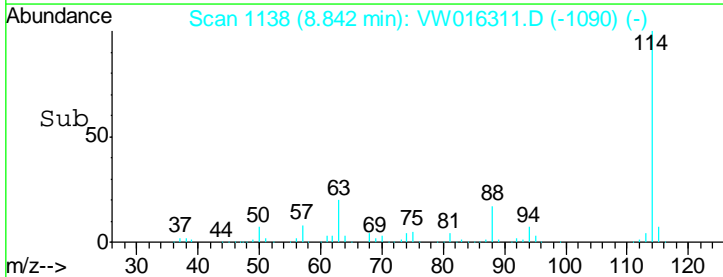
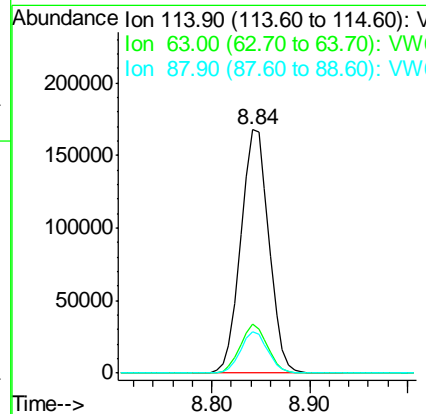
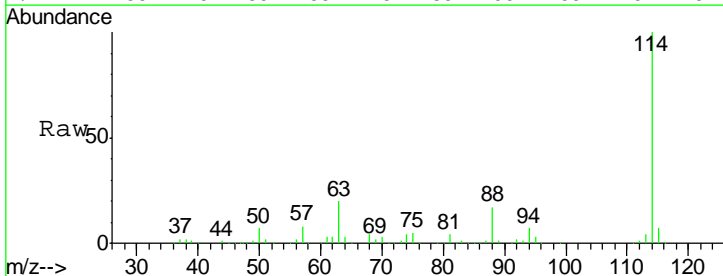
Instrument :  
 MSVOA\_W  
 ClientSampled :  
 EROC-BF-1E

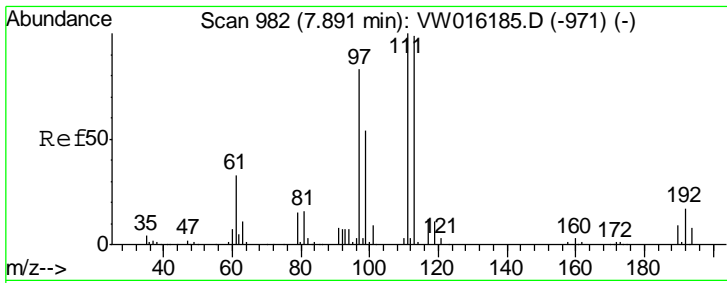
Tgt Ion	Resp	Lower	Upper
65	100		
67	52.8	0.0	105.6



#34  
 1,4-Difluorobenzene  
 Concen: 50.000 ug/l  
 RT: 8.84 min Scan# 1138  
 Delta R.T. -0.01 min  
 Lab File: VW016311.D  
 Acq: 21 Aug 2020 17:28

Tgt Ion	Resp	Lower	Upper
114	100		
63	20.0	0.0	38.4
88	17.1	0.0	32.8

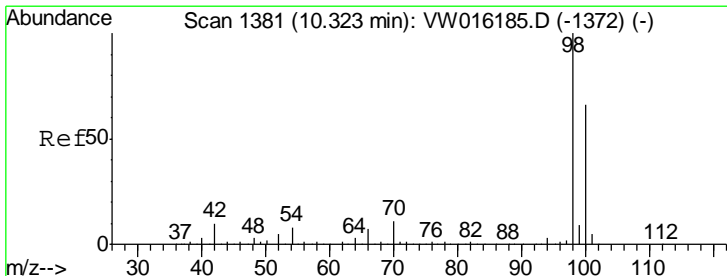
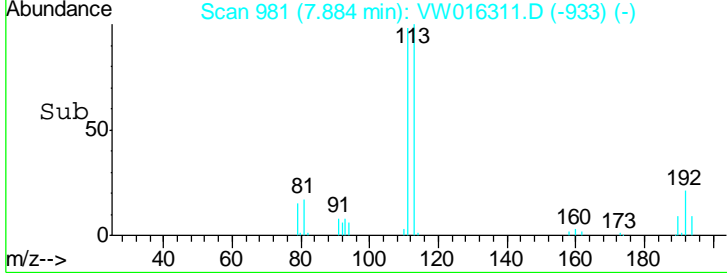
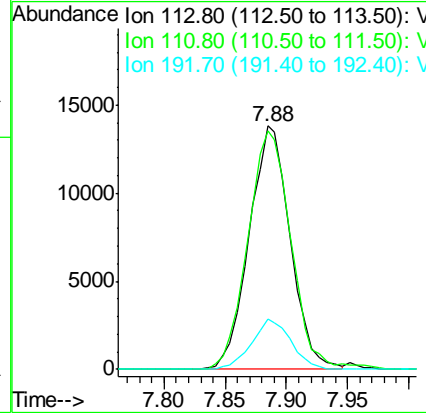
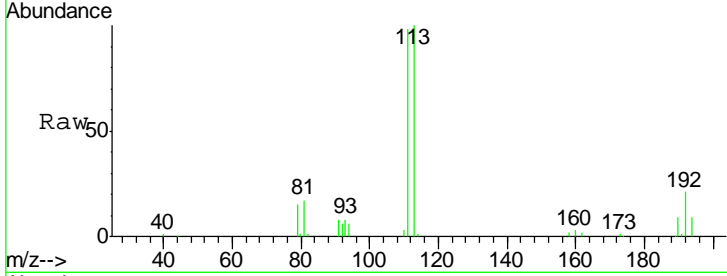




#35  
 Dibromofluoromethane  
 Concen: 15.575 ug/l  
 RT: 7.88 min Scan# 981  
 Delta R.T. -0.01 min  
 Lab File: VW016311.D  
 Acq: 21 Aug 2020 17:28

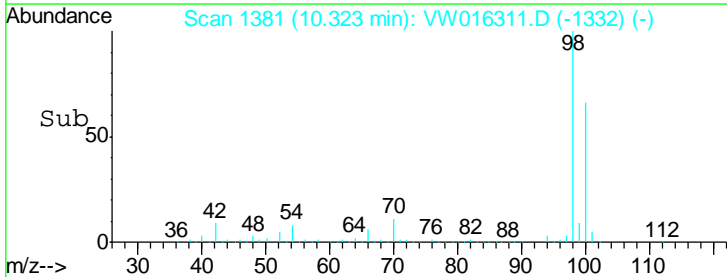
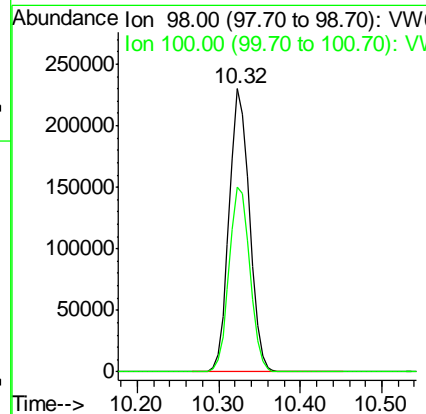
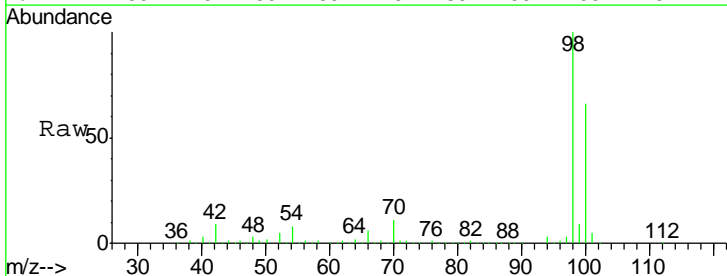
**Instrument :**  
 MSVOA\_W  
**ClientSampled :**  
 EROC-BF-1E

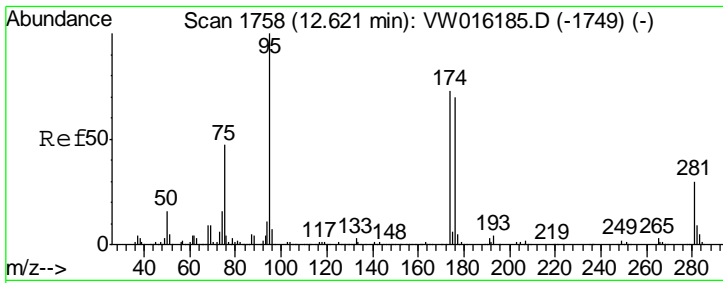
Tgt Ion	Resp	Lower	Upper
113	32199		
111	103.1	83.5	125.3
192	19.7	14.3	21.5



#50  
 Toluene-d8  
 Concen: 49.473 ug/l  
 RT: 10.32 min Scan# 1381  
 Delta R.T. -0.00 min  
 Lab File: VW016311.D  
 Acq: 21 Aug 2020 17:28

Tgt Ion	Resp	Lower	Upper
98	395889		
100	67.0	53.5	80.3

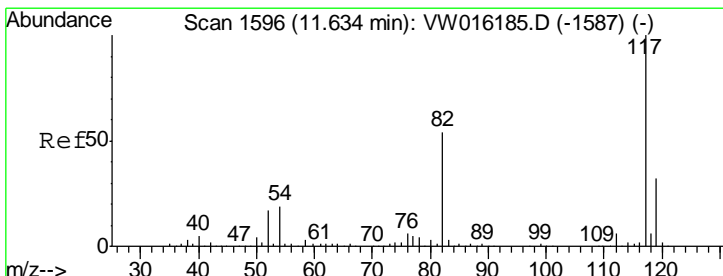
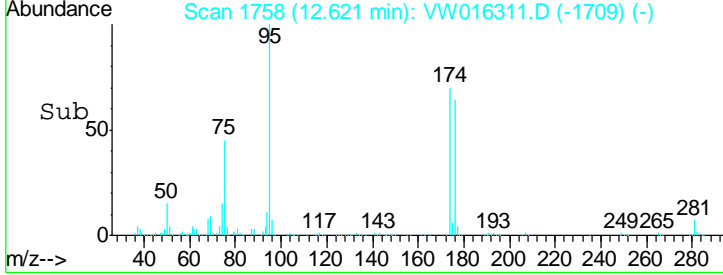
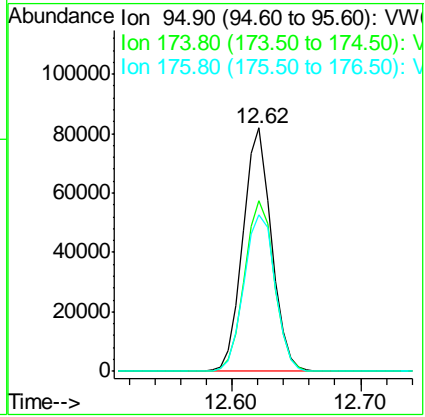
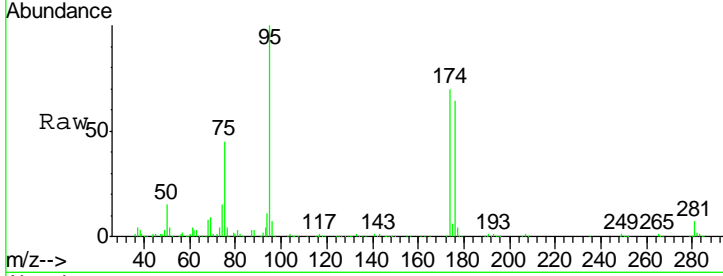




#62  
 4-Bromofluorobenzene  
 Concen: 43.696 ug/l  
 RT: 12.62 min Scan# 1758  
 Delta R.T. -0.00 min  
 Lab File: VW016311.D  
 Acq: 21 Aug 2020 17:28

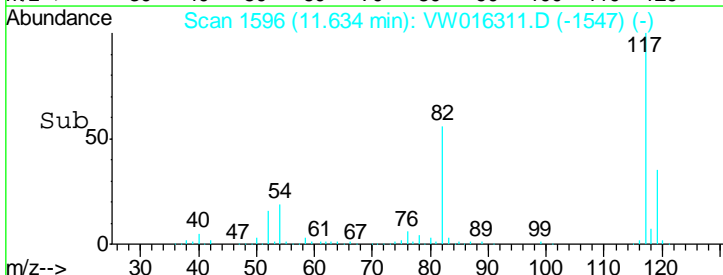
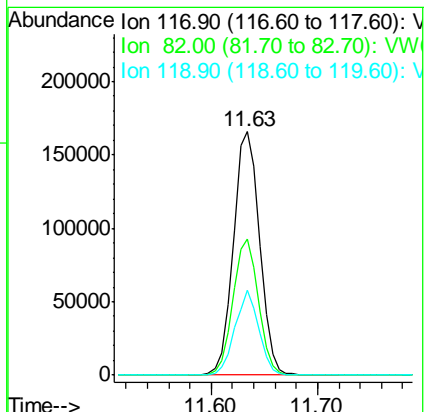
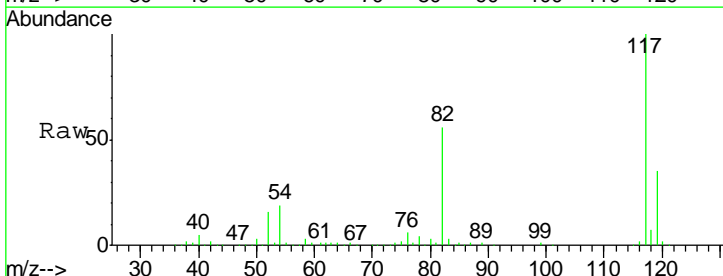
Instrument :  
 MSVOA\_W  
 ClientSampled :  
 EROC-BF-1E

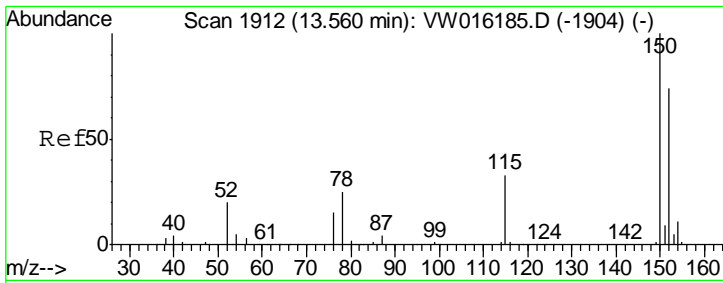
Tgt Ion	Resp	Lower	Upper
95	124988		
174	72.9	0.0	145.6
176	70.2	0.0	137.8



#63  
 Chlorobenzene-d5  
 Concen: 50.000 ug/l  
 RT: 11.63 min Scan# 1596  
 Delta R.T. -0.00 min  
 Lab File: VW016311.D  
 Acq: 21 Aug 2020 17:28

Tgt Ion	Resp	Lower	Upper
117	286117		
82	55.9	43.6	65.4
119	35.0	25.4	38.0

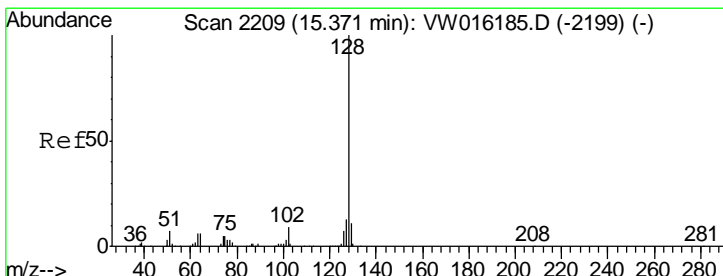
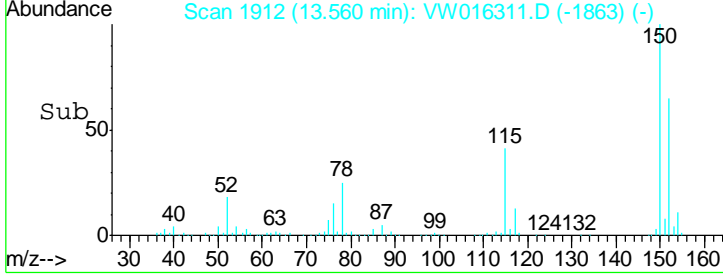
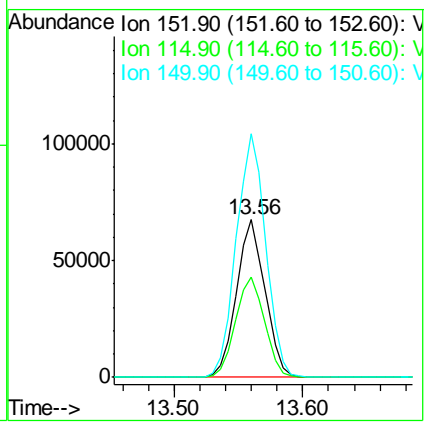
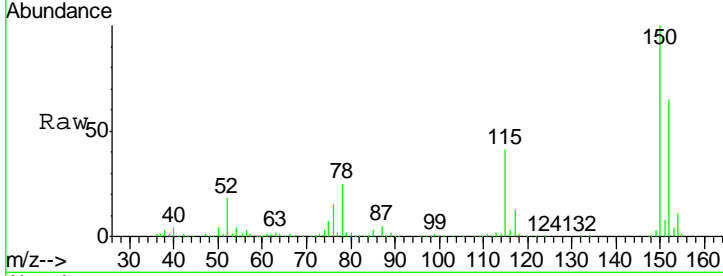




#72  
 1,4-Dichlorobenzene-d4  
 Concen: 50.000 ug/l  
 RT: 13.56 min Scan# 1912  
 Delta R.T. -0.00 min  
 Lab File: VW016311.D  
 Acq: 21 Aug 2020 17:28

Instrument : MSVOA\_W  
 ClientSampled : EROC-BF-1E

Tgt Ion	Resp	Lower	Upper
152	103501		
115	64.9	30.9	92.5
150	159.4	0.0	337.8



#95  
 Naphthalene  
 Concen: 6.550 ug/l  
 RT: 15.37 min Scan# 2209  
 Delta R.T. 0.00 min  
 Lab File: VW016311.D  
 Acq: 21 Aug 2020 17:28

Tgt Ion	Resp	Lower	Upper
128	12194		
127	12.5	10.2	15.4
129	11.1	8.7	13.1

