

Data Path : Z:\VOASRV\HPCHEM1\MSVOA W\DATA\VW082318\
 Data File : VW004928.D
 Acq On : 24 Aug 2018 05:46
 Operator : SY/AP
 Sample : VSTDCCC025EC
 Misc : 5.00G/10ML/MSVOA W/SOIL
 ALS Vial : 1 Sample Multiplier: 1

Instrument :
 MSVOA_W
 ClientSampled :

Quant Time: Aug 24 07:21:11 2018
 Quant Method : Z:\VOASRV\HPCHEM1\MSVOA_W\METHOD\SOM2WLM082218S.M
 Quant Title : VOC Analysis
 QLast Update : Fri Aug 24 07:12:16 2018
 Response via : Initial Calibration

Internal Standards	R.T.	QIon	Response	Conc	Units	Dev(Min)
1) 1,4-Difluorobenzene	8.85	114	657721	25.00	ug/L	0.00
28) Chlorobenzene-d5	11.64	117	669588	25.00	ug/L	0.00
60) 1,4-Dichlorobenzene-d4	13.57	152	332010	25.00	ug/L	0.00

System Monitoring Compounds

4) Vinyl Chloride-d3	2.35	65	287681	23.14	ug/L	0.00
Spiked Amount	25.000	Range	30 - 150	Recovery	=	92.56%
7) Chloroethane-d5	2.89	69	212146	23.02	ug/L	0.00
Spiked Amount	25.000	Range	30 - 150	Recovery	=	92.08%
10) 1,1-Dichloroethene-d2	4.03	63	359360	22.64	ug/L	0.00
Spiked Amount	25.000	Range	45 - 110	Recovery	=	90.56%
20) 2-Butanone-d5	7.09	46	134906	53.32	ug/L	0.00
Spiked Amount	50.000	Range	20 - 135	Recovery	=	106.64%
24) Chloroform-d	7.65	84	337946	23.14	ug/L	0.00
Spiked Amount	25.000	Range	40 - 150	Recovery	=	92.56%
26) 1,2-Dichloroethane-d4	8.31	65	186516	23.51	ug/L	0.00
Spiked Amount	25.000	Range	70 - 130	Recovery	=	94.04%
29) Benzene-d6	8.28	84	869560	25.25	ug/L	0.00
Spiked Amount	25.000	Range	20 - 135	Recovery	=	101.00%
33) 1,2-Dichloropropane-d6	9.28	67	245585	24.27	ug/L	0.00
Spiked Amount	25.000	Range	70 - 120	Recovery	=	97.08%
37) Toluene-d8	10.33	98	923646	25.31	ug/L	0.00
Spiked Amount	25.000	Range	30 - 130	Recovery	=	101.24%
38) trans-1,3-Dichloropropene-	10.59	79	99919	22.95	ug/L	0.00
Spiked Amount	25.000	Range	30 - 135	Recovery	=	91.80%
39) 2-Hexanone-d5	10.93	63	140897	56.20	ug/L	0.00
Spiked Amount	50.000	Range	20 - 135	Recovery	=	112.40%
48) 1,1,2,2-Tetrachloroethane-	12.70	84	265987	26.16	ug/L	0.00
Spiked Amount	25.000	Range	45 - 120	Recovery	=	104.64%
61) 1,2-Dichlorobenzene-d4	13.87	152	338663	25.39	ug/L	0.00
Spiked Amount	25.000	Range	75 - 120	Recovery	=	101.56%

Target Compounds

Target Compounds	R.T.	QIon	Response	Conc	Units	Ovalue
2) Dichlorodifluoromethane	2.00	85	304122	24.581	ug/L	100
3) Chloromethane	2.21	50	322692	23.015	ug/L	99
5) Vinyl chloride	2.36	62	341426	24.042	ug/L	99
6) Bromomethane	2.78	94	181853	24.445	ug/L	100
8) Chloroethane	2.92	64	187054	23.570	ug/L	98
9) Trichlorofluoromethane	3.26	101	343050	23.871	ug/L	99
11) 1,1,2-Trichloro-1,2,2-trif	4.07	101	215413	25.059	ug/L	99
12) 1,1-Dichloroethene	4.04	96	180999	23.637	ug/L	98
13) Acetone	4.14	43	90886	46.376	ug/L	100
14) Carbon disulfide	4.39	76	720990	22.724	ug/L	99
15) Methyl Acetate	4.68	43	111383	25.135	ug/L	98
16) Methylene chloride	4.93	84	261630	20.514	ug/L	96
17) Methyl tert-butyl Ether	5.43	73	398996	24.123	ug/L	100
18) trans-1,2-Dichloroethene	5.43	96	187468	23.511	ug/L	96
19) 1,1-Dichloroethane	6.23	63	331892	22.803	ug/L	96
21) 2-Butanone	7.18	43	145858	48.334	ug/L	100
22) cis-1,2-Dichloroethene	7.18	96	194287	22.580	ug/L	98

Data Path : Z:\VOASRV\HPCHEM1\MSVOA W\DATA\VW082318\
 Data File : VW004928.D
 Acq On : 24 Aug 2018 05:46
 Operator : SY/AP
 Sample : VSTDCCC025EC
 Misc : 5.00G/10ML/MSVOA W/SOIL
 ALS Vial : 1 Sample Multiplier: 1

Instrument :
 MSVOA_W
 ClientSampleId :

Quant Time: Aug 24 07:21:11 2018
 Quant Method : Z:\VOASRV\HPCHEM1\MSVOA_W\METHOD\SOM2WLM082218S.M
 Quant Title : VOC Analysis
 QLast Update : Fri Aug 24 07:12:16 2018
 Response via : Initial Calibration

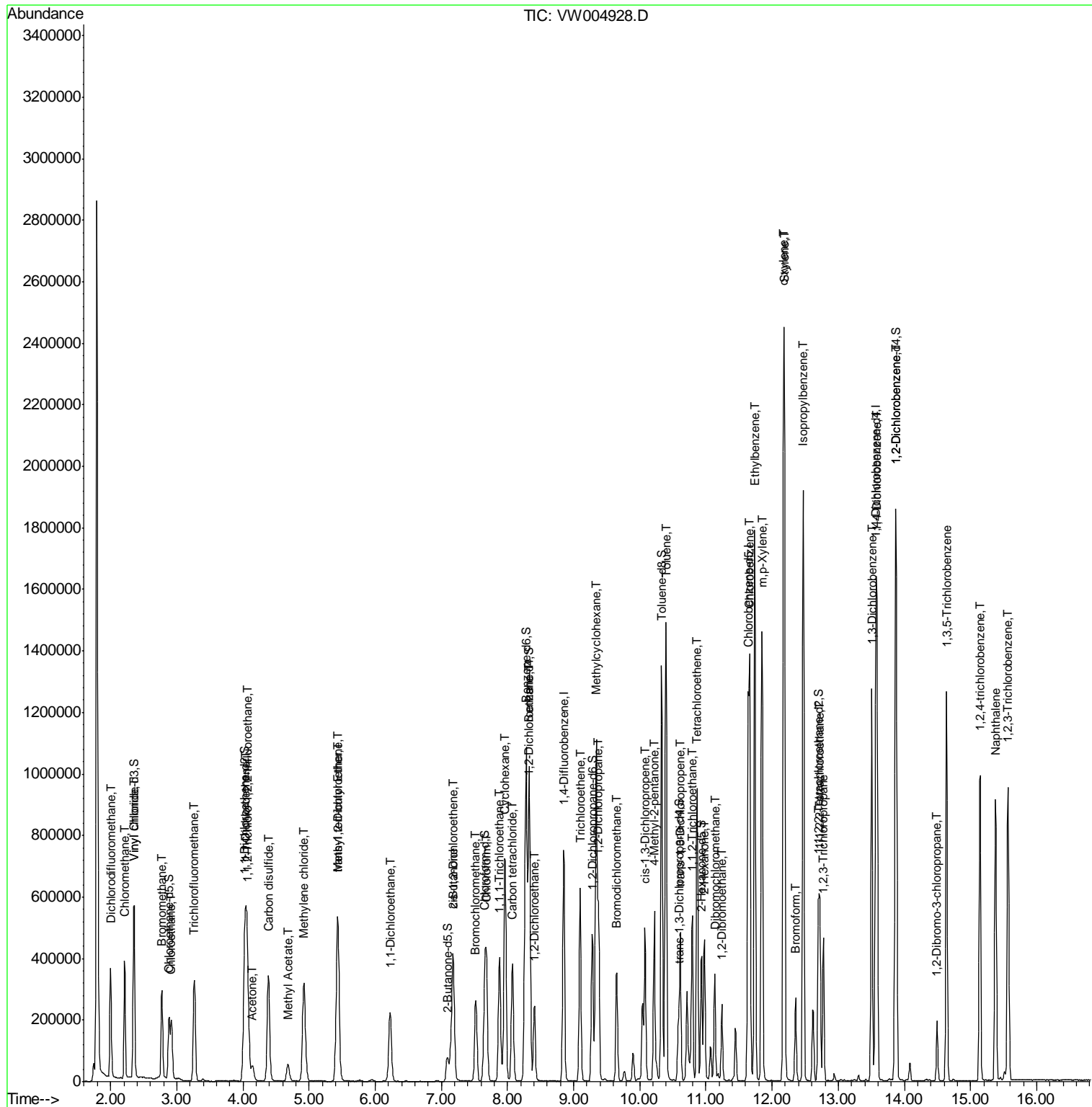
Internal Standards	R.T.	QIon	Response	Conc	Units	Dev(Min)
23) Bromochloromethane	7.52	128	99749	21.954	ug/L	98
25) Chloroform	7.68	83	333438	22.857	ug/L	99
27) 1,2-Dichloroethane	8.41	62	222400	23.259	ug/L	99
30) Cyclohexane	7.96	56	387561	27.190	ug/L	98
31) 1,1,1-Trichloroethane	7.88	97	324097	25.130	ug/L	100
32) Carbon tetrachloride	8.07	117	301355	26.124	ug/L	98
34) Benzene	8.33	78	935795	24.511	ug/L	100
35) Trichloroethene	9.10	95	227391	23.952	ug/L	99
36) Methylcyclohexane	9.34	83	451377	25.705	ug/L	100
40) 1,2-Dichloropropane	9.37	63	222384	23.679	ug/L	99
41) Bromodichloromethane	9.65	83	244202	23.598	ug/L	97
42) cis-1,3-Dichloropropene	10.08	75	300159	23.024	ug/L	99
43) 4-Methyl-2-pentanone	10.22	43	367019	52.939	ug/L	99
44) Toluene	10.40	91	1134312	24.740	ug/L	100
45) trans-1,3-Dichloropropene	10.61	75	267157	22.595	ug/L	100
46) 1,1,2-Trichloroethane	10.79	97	172212	23.492	ug/L	99
47) Tetrachloroethene	10.87	164	229548	24.698	ug/L	99
49) 2-Hexanone	10.98	43	282440	52.718	ug/L	98
50) Dibromochloromethane	11.13	129	190616	23.422	ug/L	98
51) 1,2-Dibromoethane	11.24	107	170232	23.657	ug/L	97
52) Chlorobenzene	11.66	112	716293	23.518	ug/L	99
53) Ethylbenzene	11.74	91	1268390	24.585	ug/L	99
54) m,p-Xylene	11.85	106	488700	24.417	ug/L	99
55) o-xylene	12.17	106	453998	24.277	ug/L	99
56) Styrene	12.19	104	790000	24.587	ug/L	100
57) Isopropylbenzene	12.47	105	1256857	25.162	ug/L	100
58) 1,1,2,2-Tetrachloroethane	12.72	83	259123	24.802	ug/L	99
59) 1,2,3-Trichloropropane	12.77	75	202538	25.158	ug/L	100
62) Bromoform	12.35	173	131513	24.983	ug/L	100
63) 1,3-Dichlorobenzene	13.51	146	550363	24.061	ug/L	97
64) 1,4-Dichlorobenzene	13.59	146	570148	23.808	ug/L	99
65) 1,2-Dichlorobenzene	13.88	146	536787	24.492	ug/L	99
66) 1,2-Dibromo-3-chloropropan	14.49	75	47940	25.794	ug/L	95
67) 1,3,5-Trichlorobenzene	14.64	180	430745	23.534	ug/L	100
68) 1,2,4-trichlorobenzene	15.15	180	348088	23.555	ug/L	99
69) Naphthalene	15.38	128	792823	26.394	ug/L	100
70) 1,2,3-Trichlorobenzene	15.57	180	350652	25.192	ug/L	99

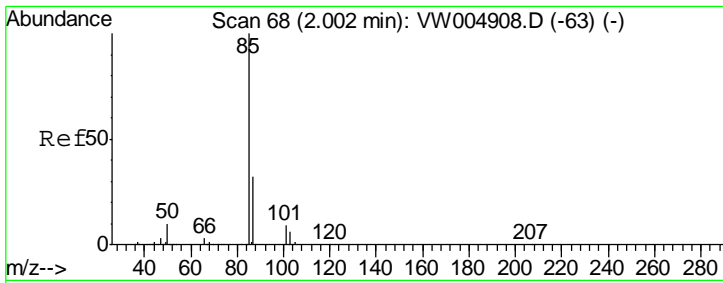
(#) = qualifier out of range (m) = manual integration (+) = signals summed

Data Path : Z:\VOASRV\HPCHEM1\MSVOA W\DATA\VW082318\
 Data File : VW004928.D
 Acq On : 24 Aug 2018 05:46
 Operator : SY/AP
 Sample : VSTDCCC025EC
 Misc : 5.00G/10ML/MSVOA W/SOIL
 ALS Vial : 1 Sample Multiplier: 1

Instrument :
 MSVOA_W
 Client Sampled :

Quant Time: Aug 24 07:21:11 2018
 Quant Method : Z:\VOASRV\HPCHEM1\MSVOA_W\METHOD\SOM2WLM082218S.M
 Quant Title : VOC Analysis
 QLast Update : Fri Aug 24 07:12:16 2018
 Response via : Initial Calibration

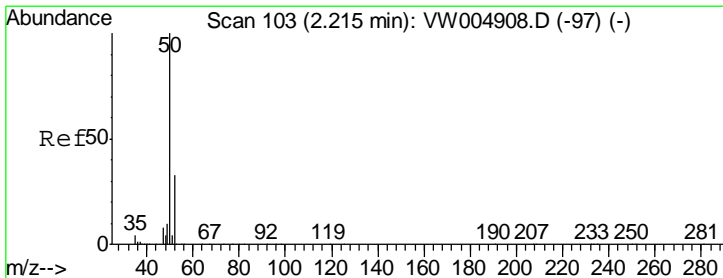
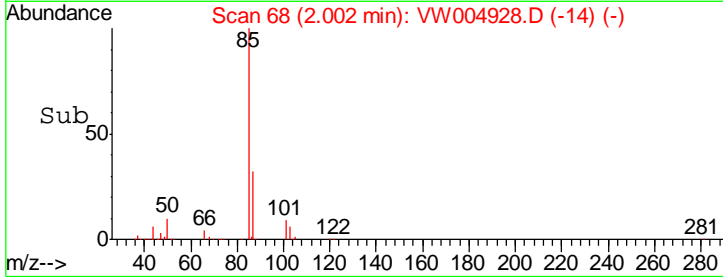
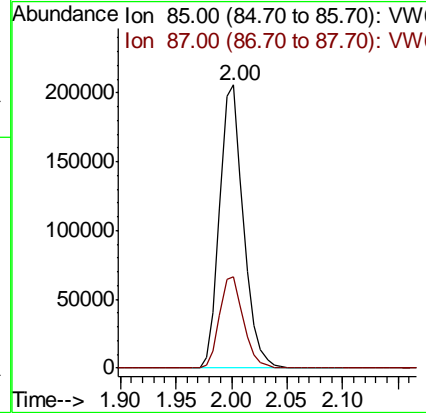
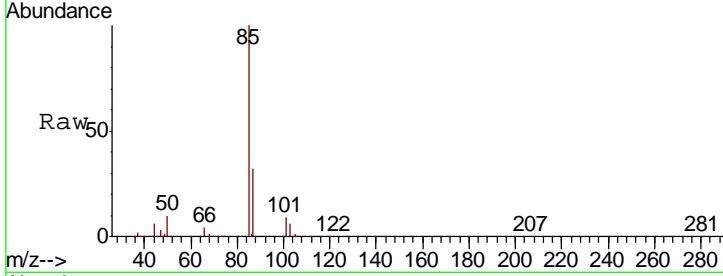




#2
 Dichlorodifluoromethane
 Concen: 24.581 ug/L
 RT: 2.00 min Scan# 68
 Delta R.T. 0.00 min
 Lab File: VW004928.D
 Acq: 24 Aug 2018 05:46

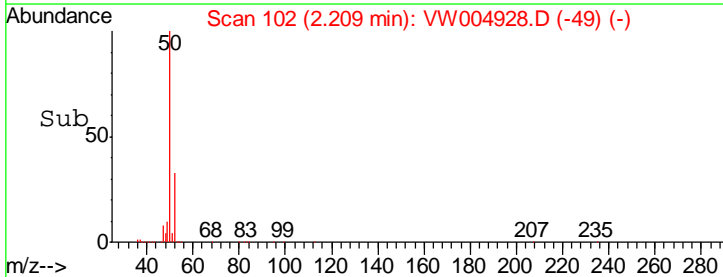
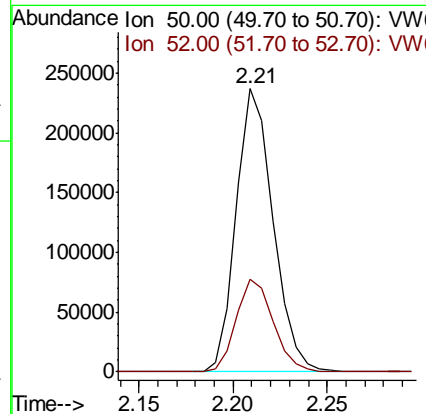
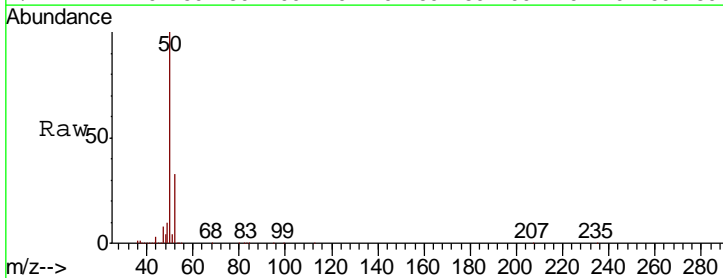
Instrument :
 MSVOA_W
 ClientSampled :

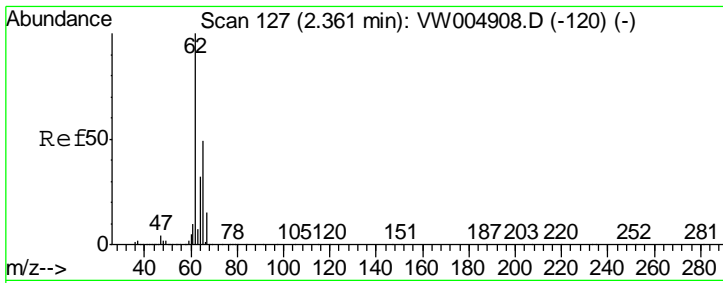
Tgt Ion: 85 Resp: 304122
 Ion Ratio Lower Upper
 85 100
 87 32.4 22.6 42.0



#3
 Chloromethane
 Concen: 23.015 ug/L
 RT: 2.21 min Scan# 102
 Delta R.T. -0.01 min
 Lab File: VW004928.D
 Acq: 24 Aug 2018 05:46

Tgt Ion: 50 Resp: 322692
 Ion Ratio Lower Upper
 50 100
 52 32.7 22.5 41.9

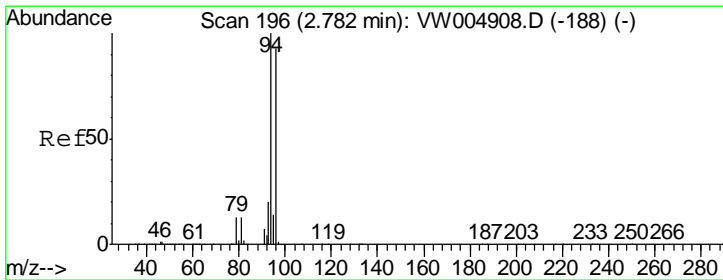
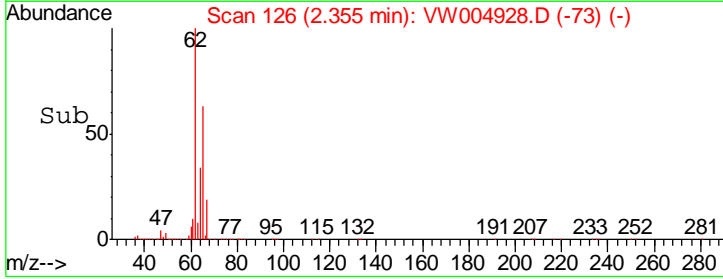
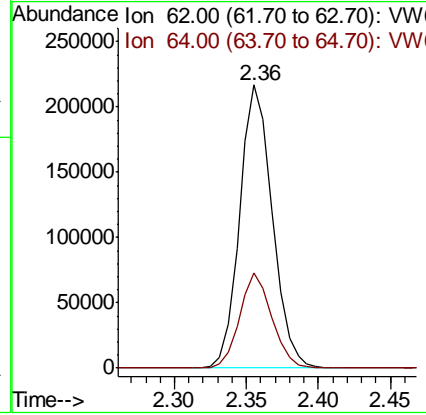
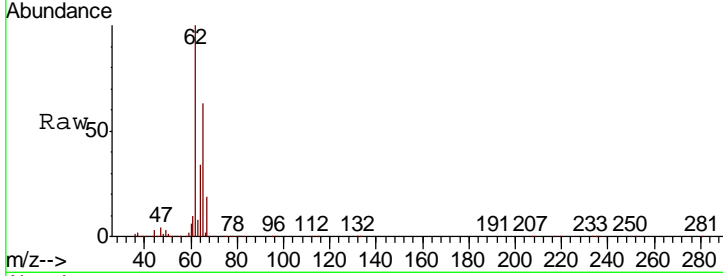




#5
 Vinyl chloride
 Concen: 24.042 ug/L
 RT: 2.36 min Scan# 126
 Delta R.T. -0.01 min
 Lab File: VW004928.D
 Acq: 24 Aug 2018 05:46

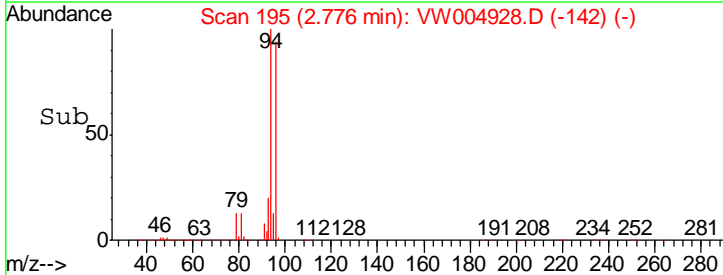
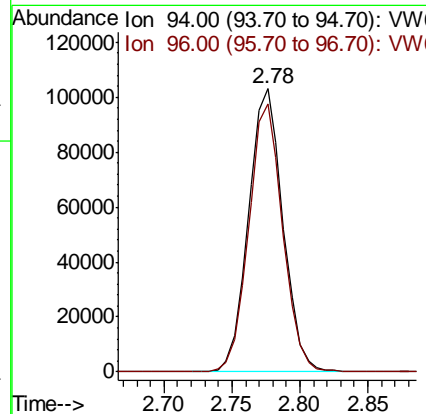
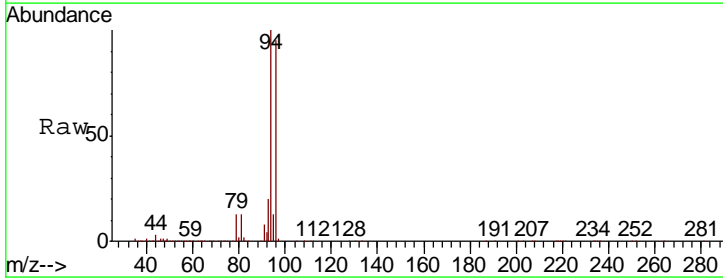
Instrument :
 MSVOA_W
 ClientSampled :

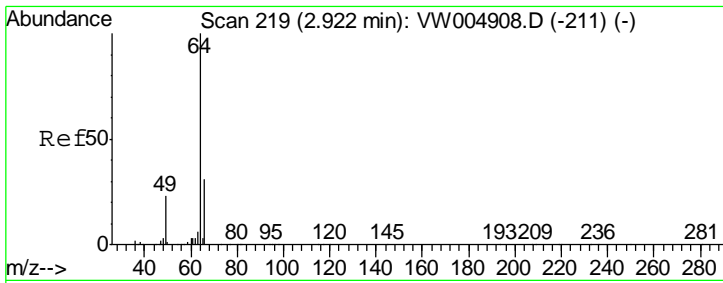
Tgt Ion	Resp	Lower	Upper
62	341426		
64	100	23.3	43.3



#6
 Bromomethane
 Concen: 24.445 ug/L
 RT: 2.78 min Scan# 195
 Delta R.T. -0.01 min
 Lab File: VW004928.D
 Acq: 24 Aug 2018 05:46

Tgt Ion	Resp	Lower	Upper
94	181853		
96	100	9.3	177.7

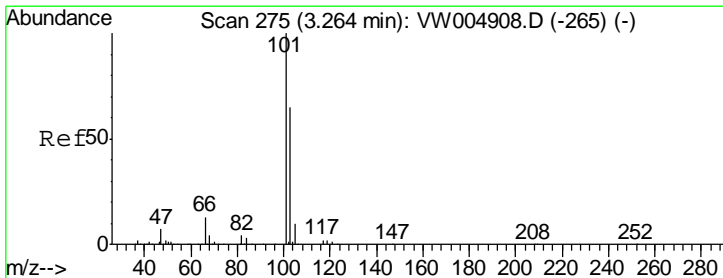
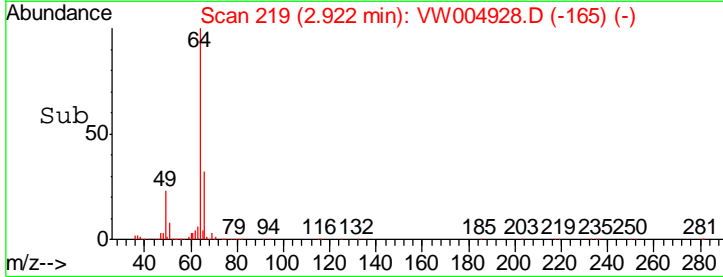
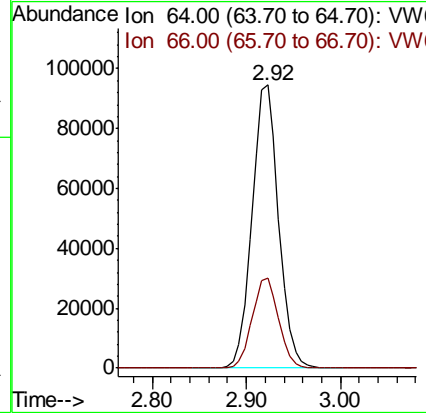
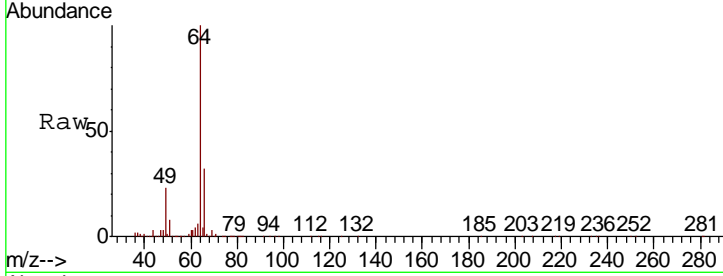




#8
 Chloroethane
 Concen: 23.570 ug/L
 RT: 2.92 min Scan# 219
 Delta R.T. 0.00 min
 Lab File: VW004928.D
 Acq: 24 Aug 2018 05:46

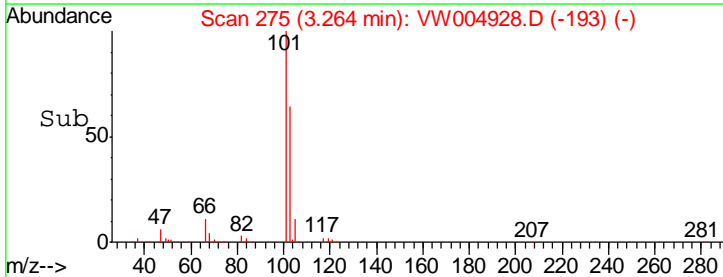
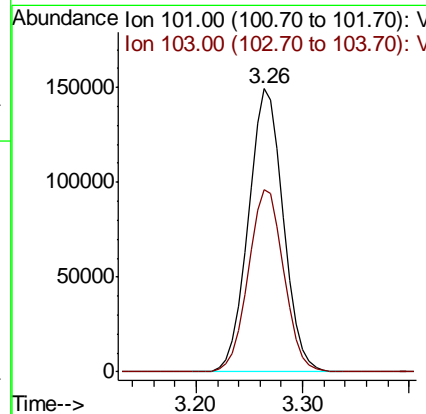
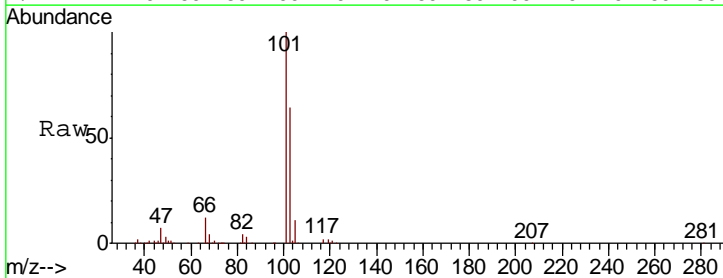
Instrument :
 MSVOA_W
 ClientSampled :

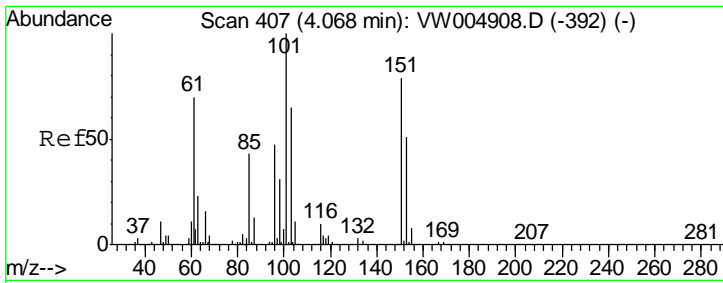
Tgt Ion	Resp	Lower	Upper
64	187054		
66	31.8	21.5	39.9



#9
 Trichlorofluoromethane
 Concen: 23.871 ug/L
 RT: 3.26 min Scan# 275
 Delta R.T. 0.00 min
 Lab File: VW004928.D
 Acq: 24 Aug 2018 05:46

Tgt Ion	Resp	Lower	Upper
101	343050		
103	65.4	45.1	83.7

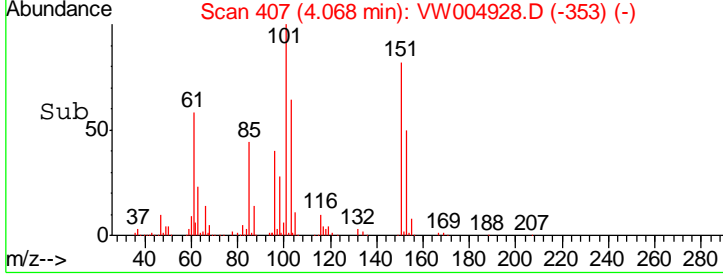
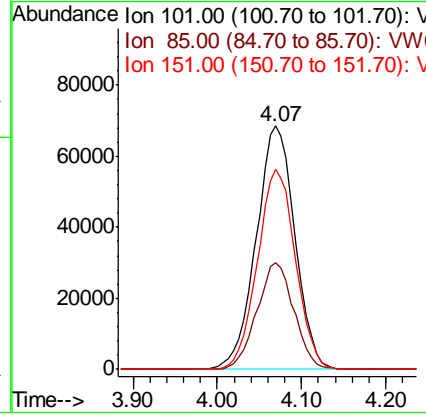
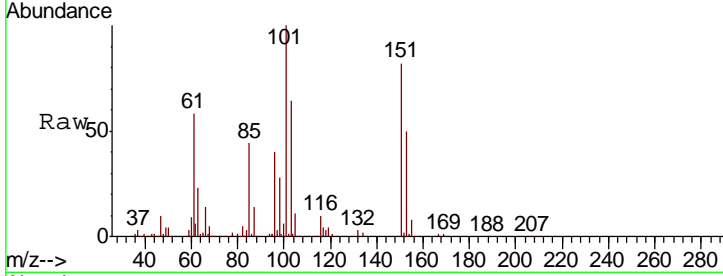




#11
 1,1,2-Trichloro-1,2,2-trifluoroethane
 Concen: 25.059 ug/L
 RT: 4.07 min Scan# 407
 Delta R.T. 0.00 min
 Lab File: VW004928.D
 Acq: 24 Aug 2018 05:46

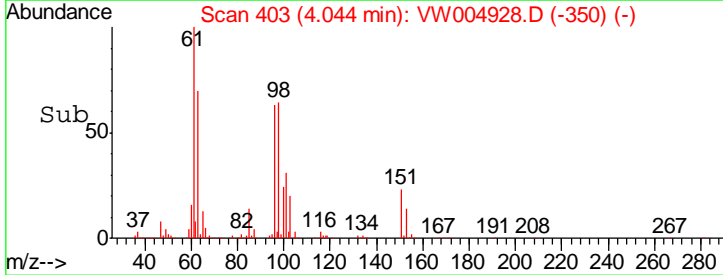
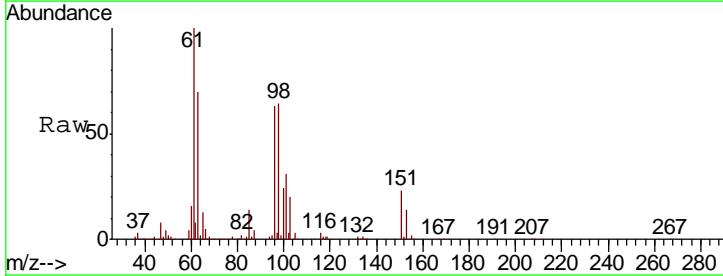
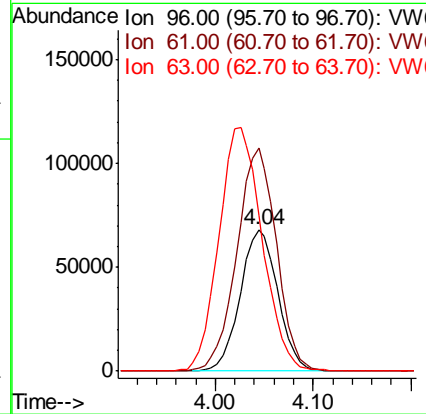
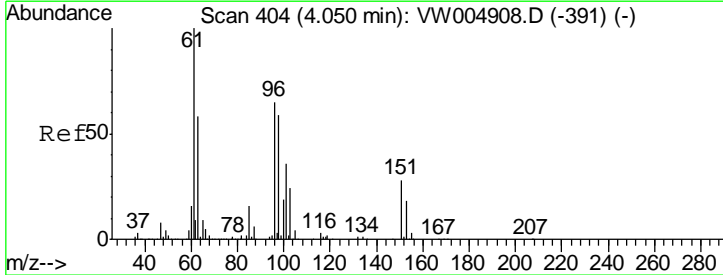
Instrument :
 MSVOA_W
 ClientSampled :

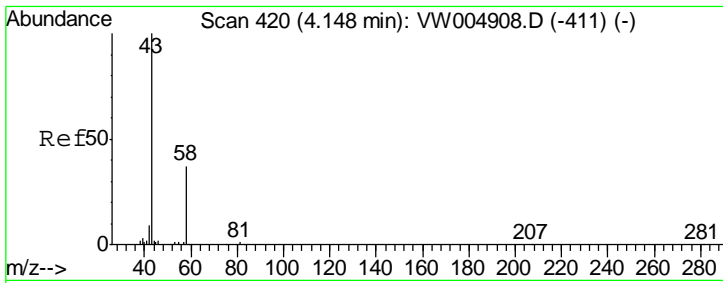
Tgt Ion	Resp	Lower	Upper
101	215413		
85	42.1	34.2	51.2
151	80.9	64.1	96.1



#12
 1,1-Dichloroethene
 Concen: 23.637 ug/L
 RT: 4.04 min Scan# 403
 Delta R.T. -0.01 min
 Lab File: VW004928.D
 Acq: 24 Aug 2018 05:46

Tgt Ion	Resp	Lower	Upper
96	180999		
61	157.8	107.0	198.8
63	109.9	76.9	142.7

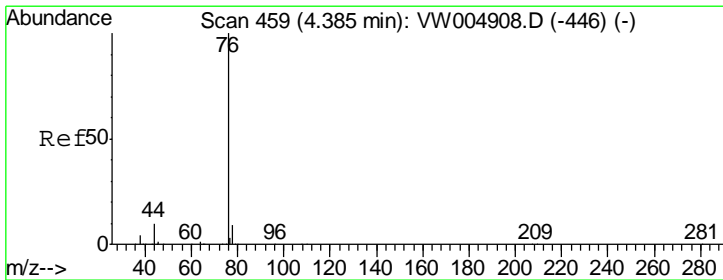
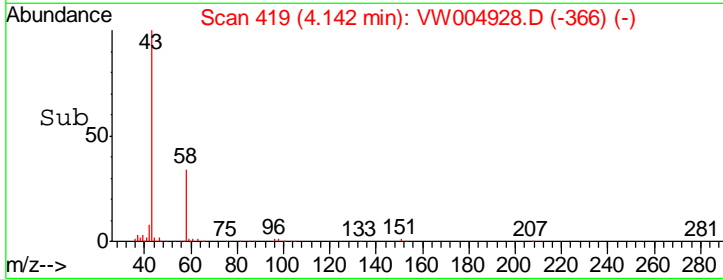
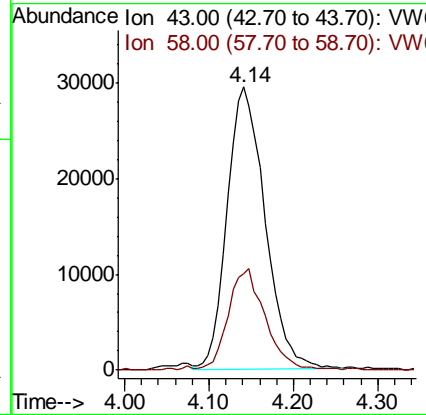
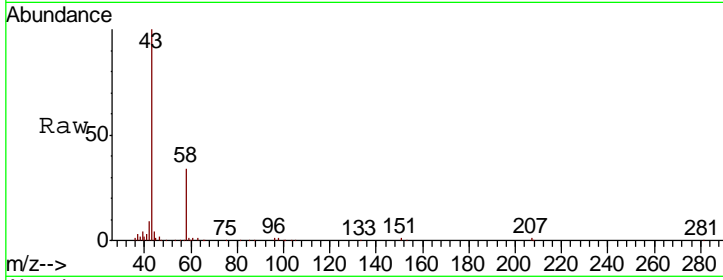




#13
 Acetone
 Concen: 46.376 ug/L
 RT: 4.14 min Scan# 419
 Delta R.T. -0.01 min
 Lab File: VW004928.D
 Acq: 24 Aug 2018 05:46

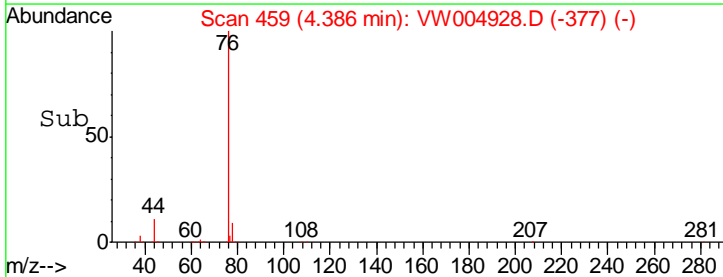
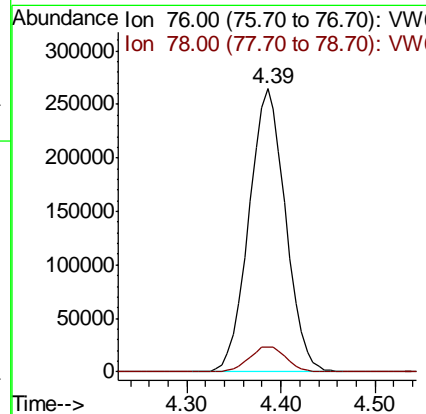
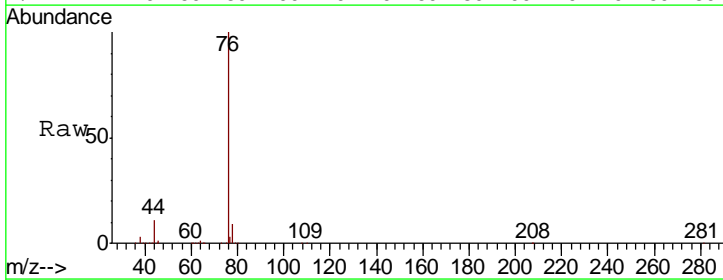
Instrument :
 MSVOA_W
 ClientSampled :

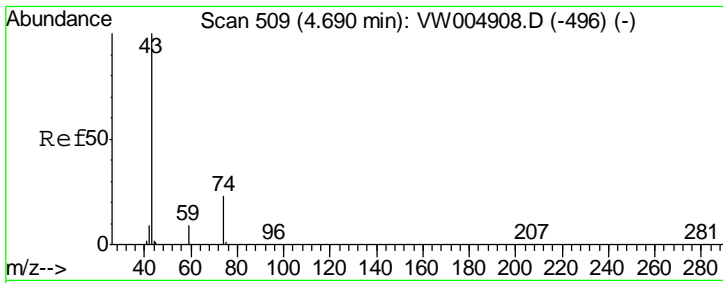
Tgt Ion	Resp	Lower	Upper
43	100		
58	34.8	0.0	69.4



#14
 Carbon disulfide
 Concen: 22.724 ug/L
 RT: 4.39 min Scan# 459
 Delta R.T. 0.00 min
 Lab File: VW004928.D
 Acq: 24 Aug 2018 05:46

Tgt Ion	Resp	Lower	Upper
76	100		
78	9.0	7.4	11.0

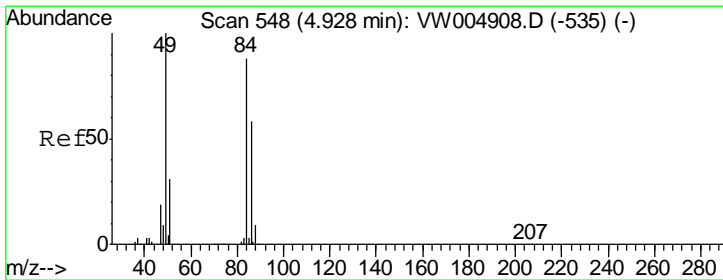
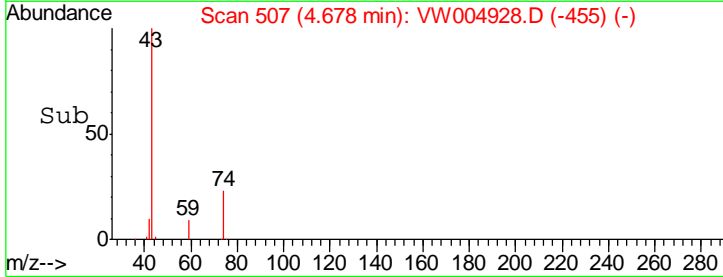
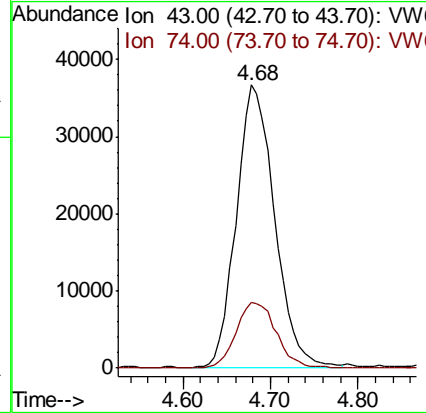
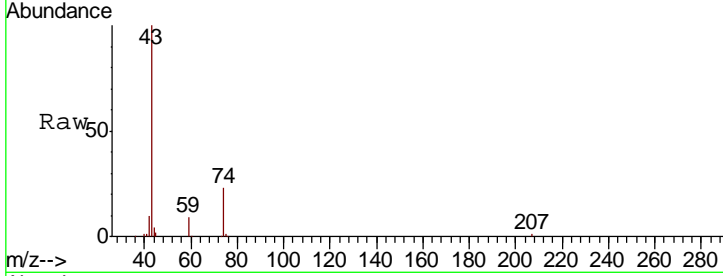




#15
 Methyl Acetate
 Concen: 25.135 ug/L
 RT: 4.68 min Scan# 507
 Delta R.T. -0.01 min
 Lab File: VW004928.D
 Acq: 24 Aug 2018 05:46

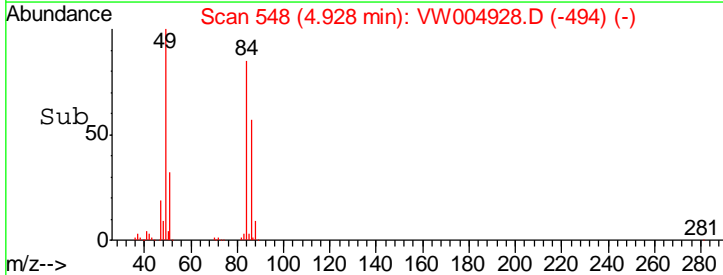
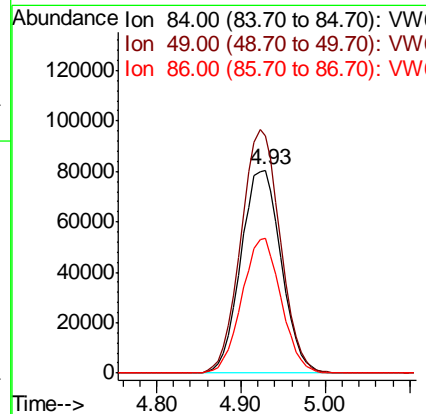
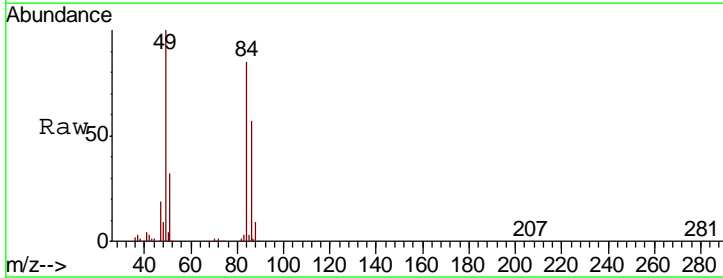
Instrument :
 MSVOA_W
 ClientSampled :

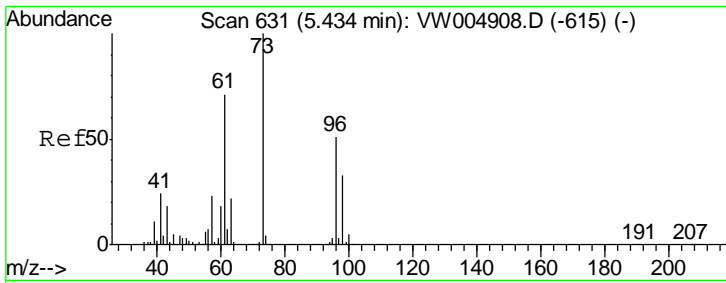
Tgt Ion	Resp	Lower	Upper
43	111383		
74	24.3	18.6	27.8



#16
 Methylene chloride
 Concen: 20.514 ug/L
 RT: 4.93 min Scan# 548
 Delta R.T. 0.00 min
 Lab File: VW004928.D
 Acq: 24 Aug 2018 05:46

Tgt Ion	Resp	Lower	Upper
84	261630		
49	117.0	83.8	155.6
86	66.5	42.6	79.0

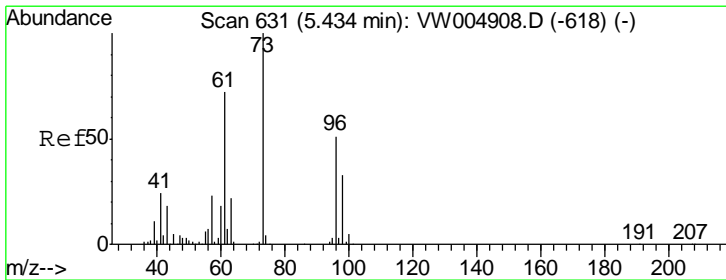
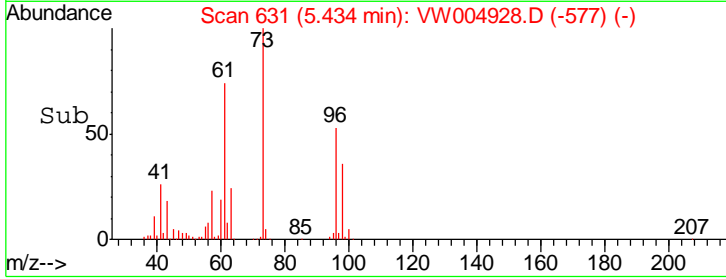
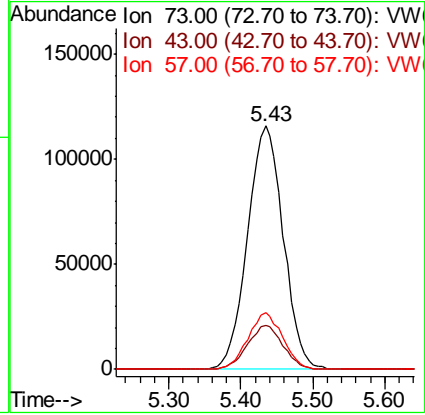
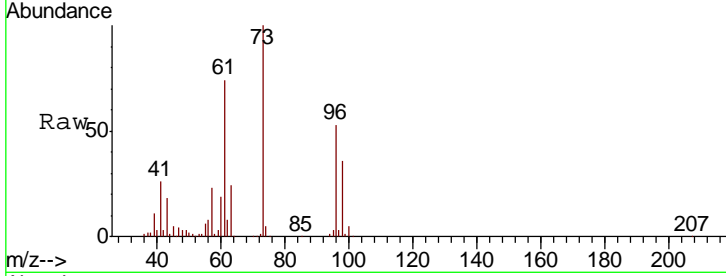




#17
 Methyl tert-butyl Ether
 Concen: 24.123 ug/L
 RT: 5.43 min Scan# 631
 Delta R.T. 0.00 min
 Lab File: VW004928.D
 Acq: 24 Aug 2018 05:46

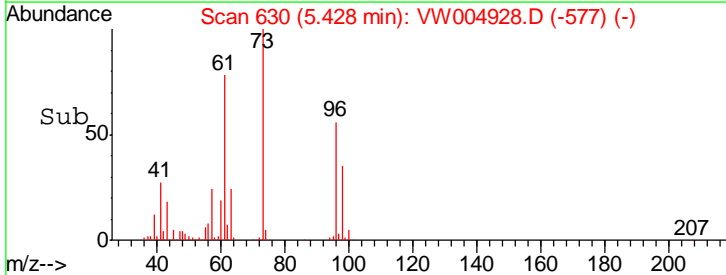
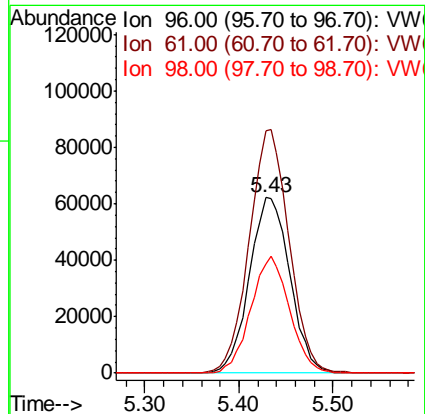
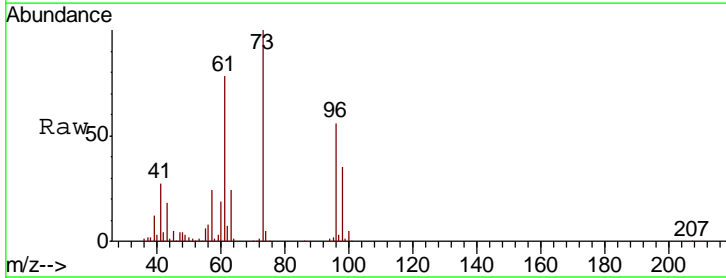
Instrument :
 MSVOA_W
 ClientSampled :

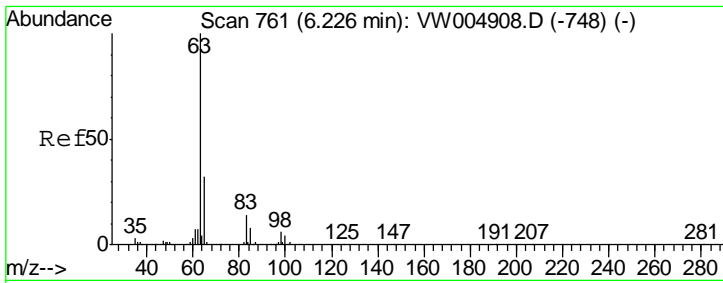
Tgt Ion	Resp	Lower	Upper
73	398996		
43	18.1	14.6	22.0
57	22.8	18.2	27.4



#18
 trans-1,2-Dichloroethene
 Concen: 23.511 ug/L
 RT: 5.43 min Scan# 630
 Delta R.T. -0.01 min
 Lab File: VW004928.D
 Acq: 24 Aug 2018 05:46

Tgt Ion	Resp	Lower	Upper
96	187468		
61	138.5	92.5	171.9
98	62.7	42.8	79.4

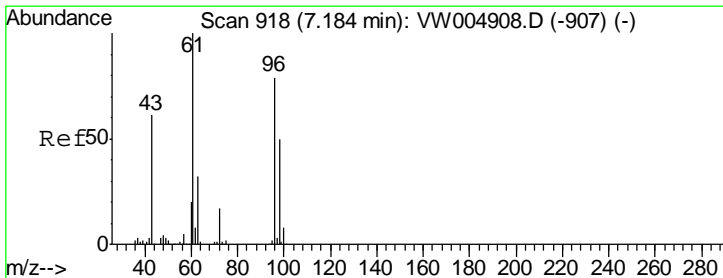
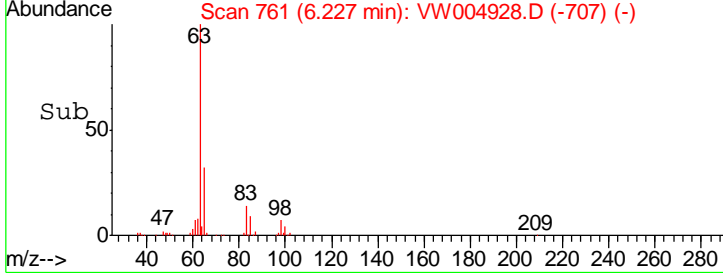
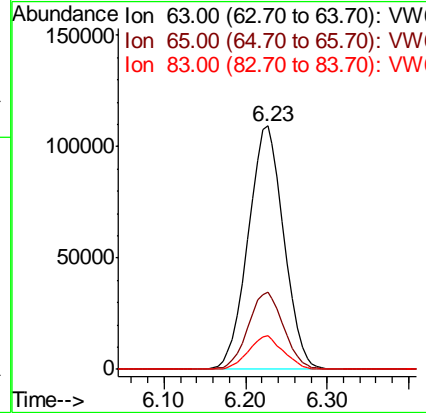
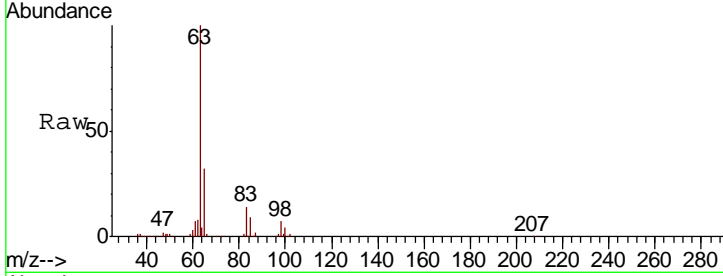




#19
 1,1-Dichloroethane
 Concen: 22.803 ug/L
 RT: 6.23 min Scan# 761
 Delta R.T. 0.00 min
 Lab File: VW004928.D
 Acq: 24 Aug 2018 05:46

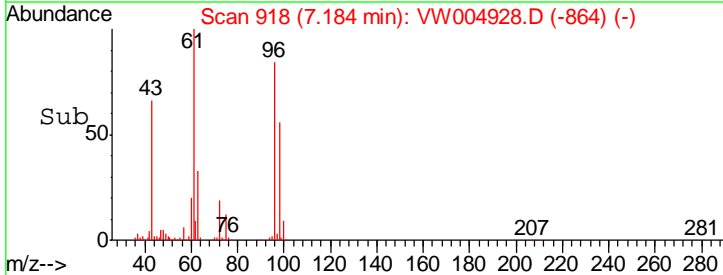
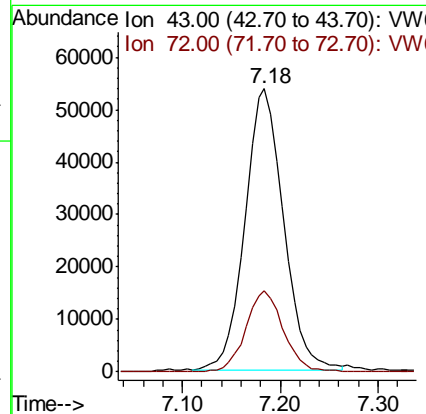
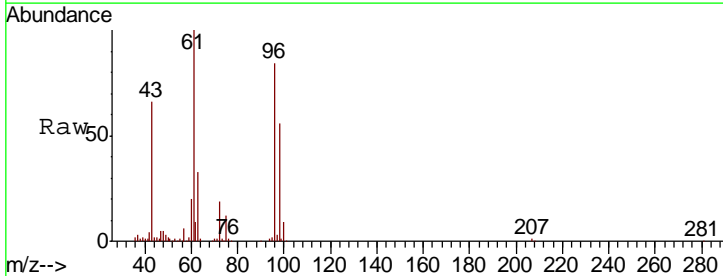
Instrument :
 MSVOA_W
 ClientSampled :

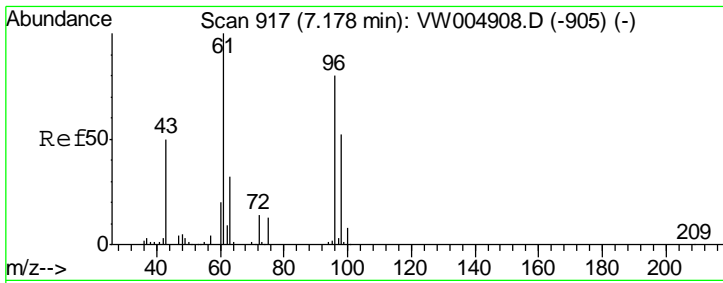
Tgt Ion	Resp	Lower	Upper
63	331892		
65	31.9	20.5	38.1
83	13.8	8.8	16.4



#21
 2-Butanone
 Concen: 48.334 ug/L
 RT: 7.18 min Scan# 918
 Delta R.T. 0.00 min
 Lab File: VW004928.D
 Acq: 24 Aug 2018 05:46

Tgt Ion	Resp	Lower	Upper
43	145858		
72	28.3	14.2	42.8

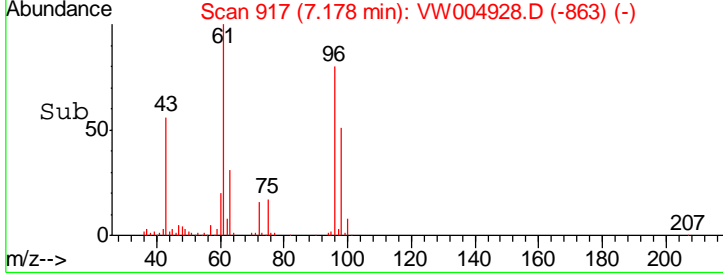
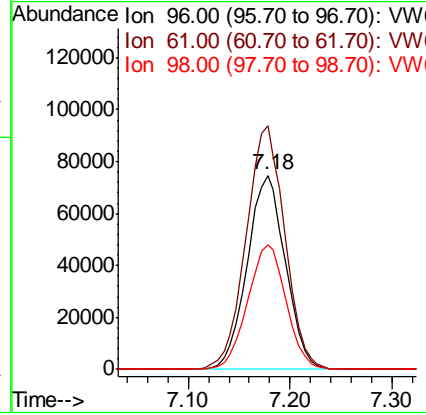
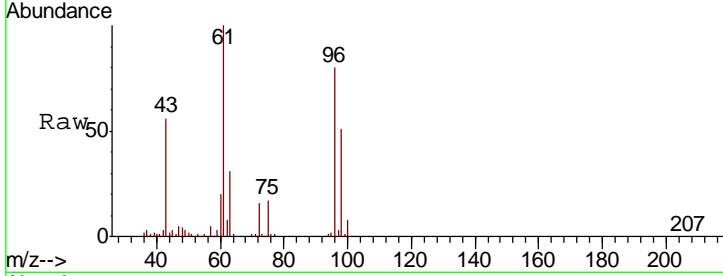




#22
 cis-1,2-Dichloroethene
 Concen: 22.580 ug/L
 RT: 7.18 min Scan# 917
 Delta R.T. 0.00 min
 Lab File: VW004928.D
 Acq: 24 Aug 2018 05:46

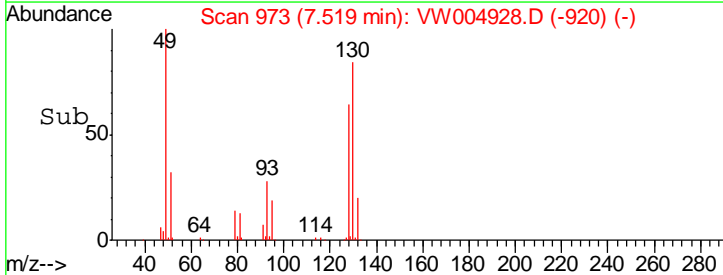
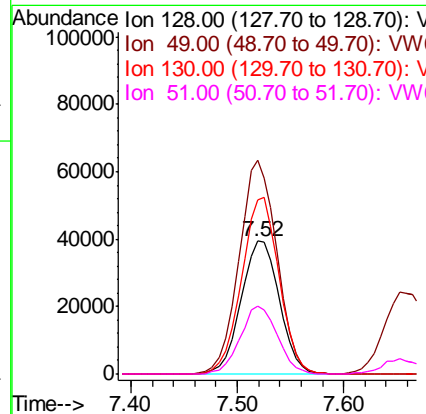
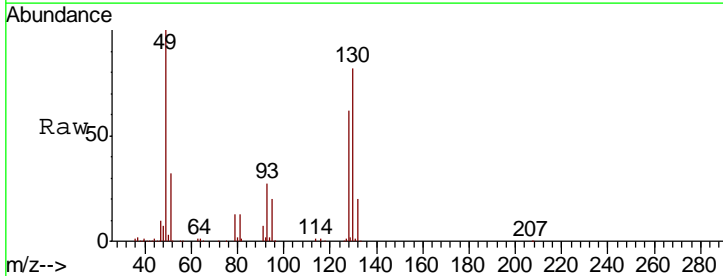
Instrument :
 MSVOA_W
 ClientSampled :

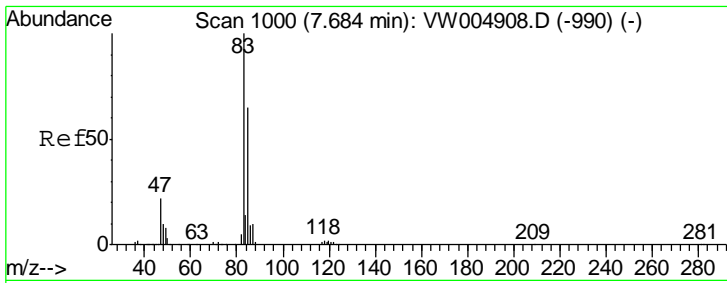
Tgt Ion	Resp	Lower	Upper
96	194287		
Ion Ratio			
96	100		
61	125.6	89.7	166.7
98	64.0	45.0	83.6



#23
 Bromochloromethane
 Concen: 21.954 ug/L
 RT: 7.52 min Scan# 973
 Delta R.T. -0.01 min
 Lab File: VW004928.D
 Acq: 24 Aug 2018 05:46

Tgt Ion	Resp	Lower	Upper
128	99749		
Ion Ratio			
128	100		
49	160.6	111.3	206.7
130	131.2	90.2	167.6
51	51.1	39.3	58.9

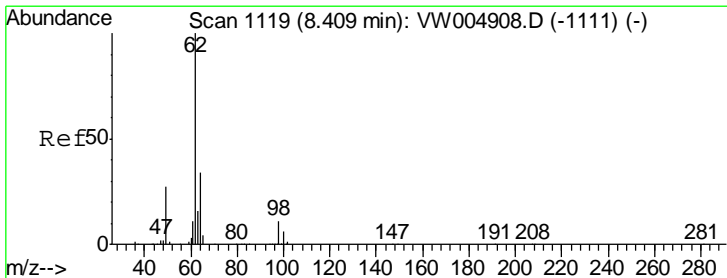
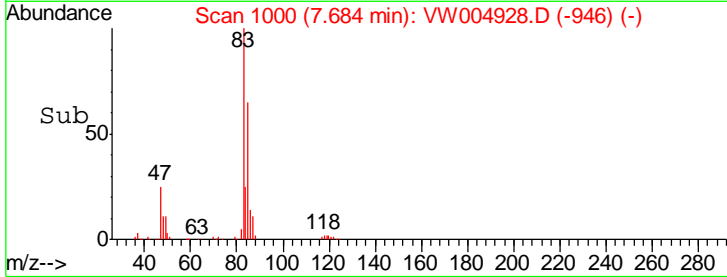
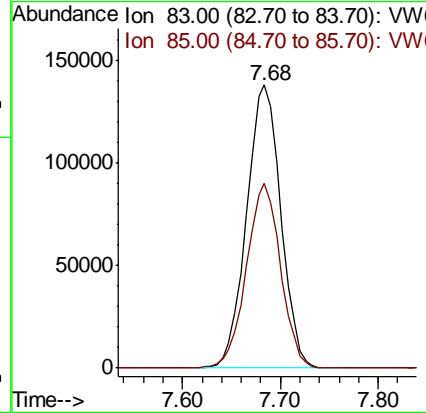
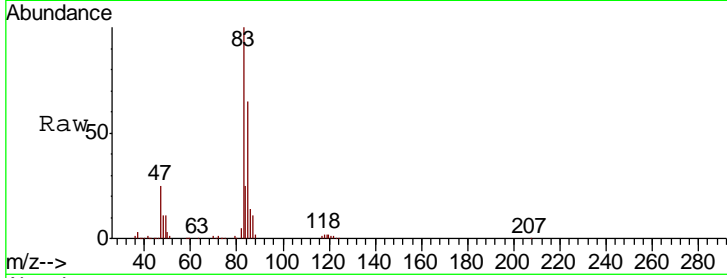




#25
 Chloroform
 Concen: 22.857 ug/L
 RT: 7.68 min Scan# 1000
 Delta R.T. 0.00 min
 Lab File: VW004928.D
 Acq: 24 Aug 2018 05:46

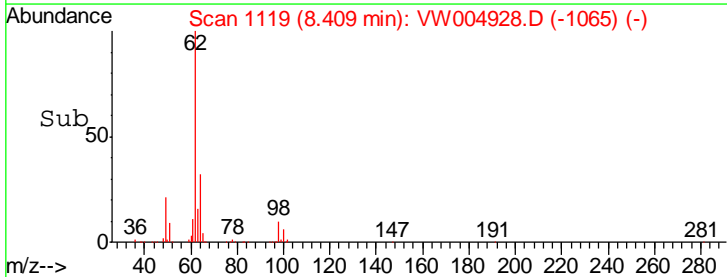
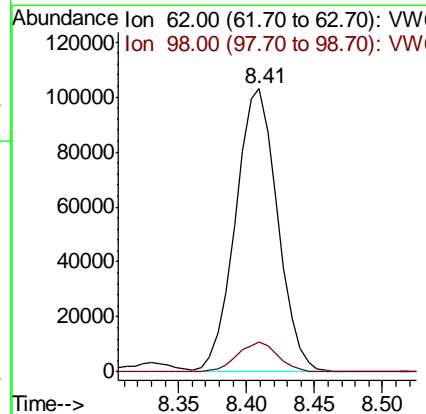
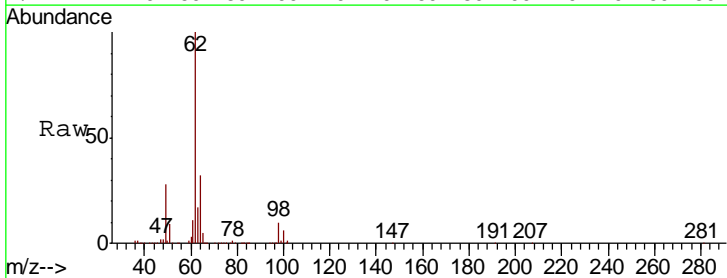
Instrument :
 MSVOA_W
 ClientSampled :

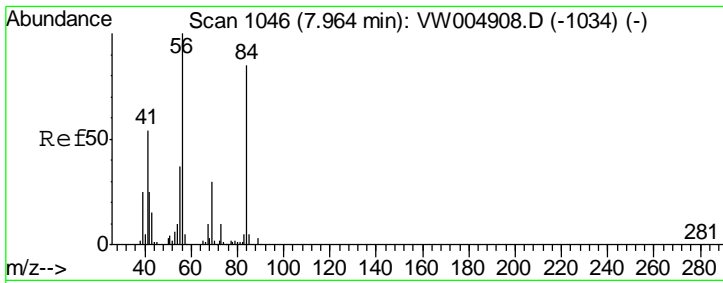
Tgt Ion	Resp	Lower	Upper
83	333438		
85	65.4	46.3	85.9



#27
 1,2-Dichloroethane
 Concen: 23.259 ug/L
 RT: 8.41 min Scan# 1119
 Delta R.T. 0.00 min
 Lab File: VW004928.D
 Acq: 24 Aug 2018 05:46

Tgt Ion	Resp	Lower	Upper
62	222400		
98	10.5	8.0	12.0

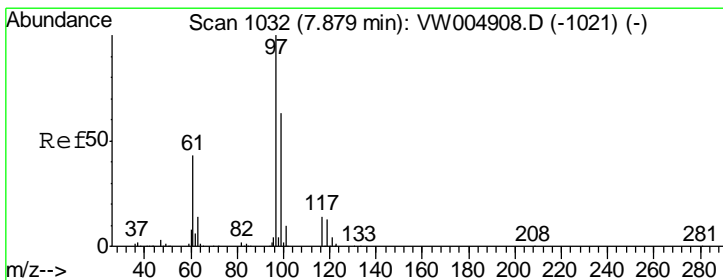
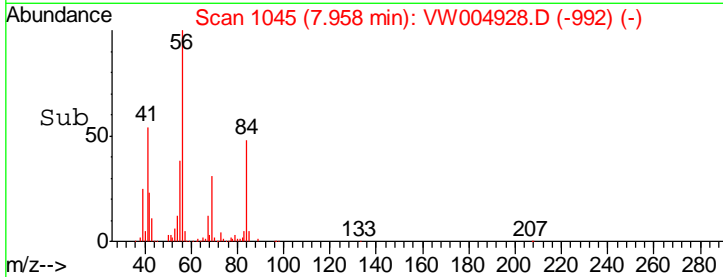
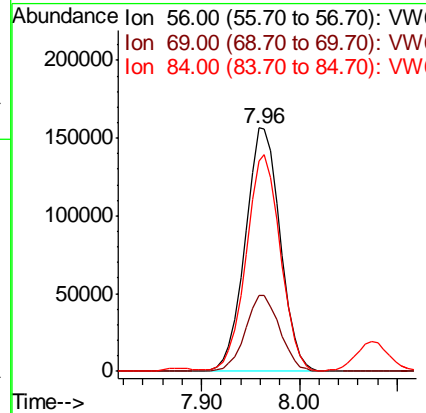
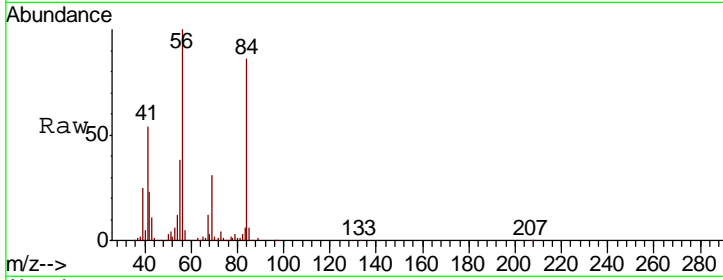




#30
 Cyclohexane
 Concen: 27.190 ug/L
 RT: 7.96 min Scan# 1045
 Delta R.T. -0.01 min
 Lab File: VW004928.D
 Acq: 24 Aug 2018 05:46

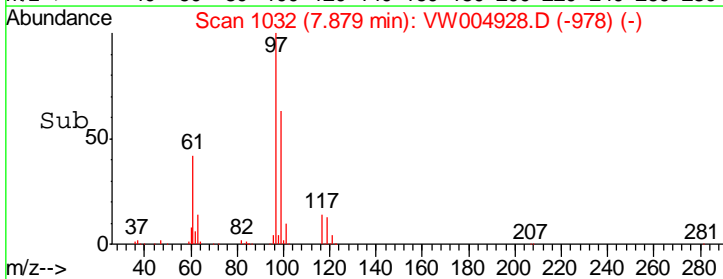
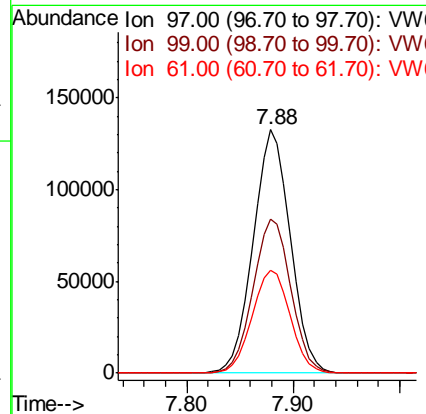
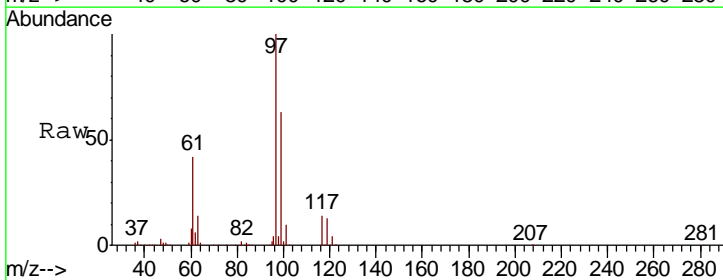
Instrument :
 MSVOA_W
 ClientSampled :

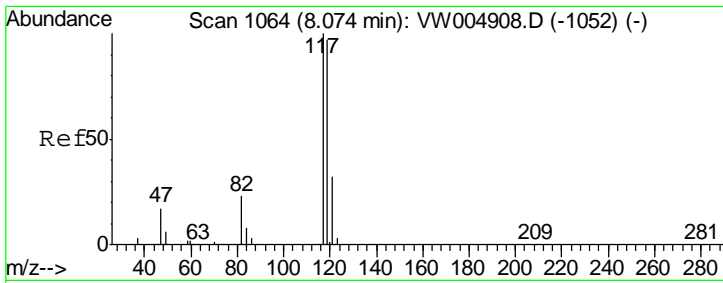
Tgt Ion	Resp	Lower	Upper
56	387561		
69	30.7	24.1	36.1
84	87.3	67.7	101.5



#31
 1,1,1-Trichloroethane
 Concen: 25.130 ug/L
 RT: 7.88 min Scan# 1032
 Delta R.T. 0.00 min
 Lab File: VW004928.D
 Acq: 24 Aug 2018 05:46

Tgt Ion	Resp	Lower	Upper
97	324097		
99	64.5	51.2	76.8
61	43.5	34.9	52.3

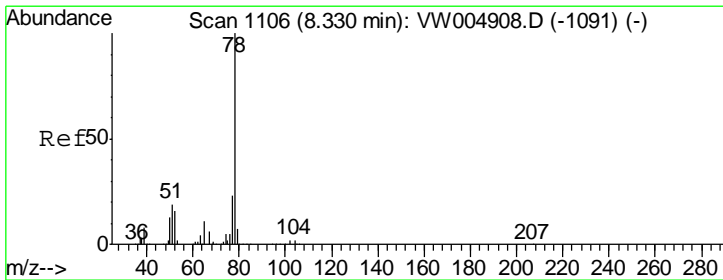
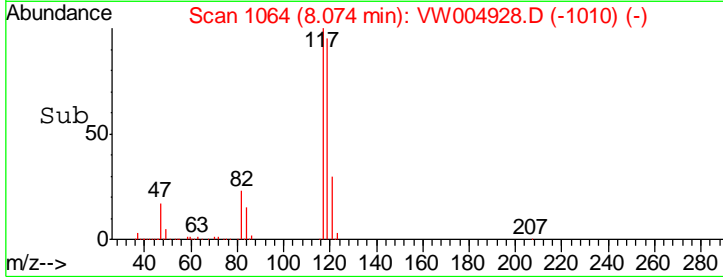
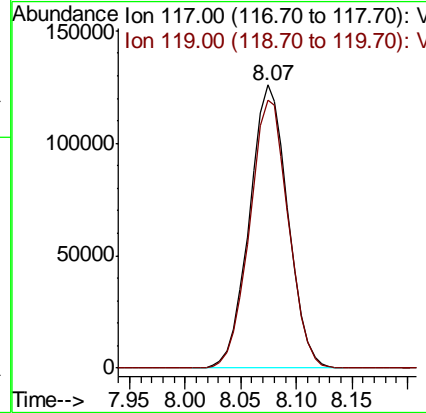
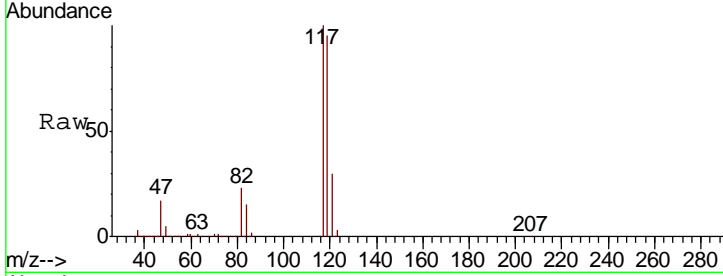




#32
 Carbon tetrachloride
 Concen: 26.124 ug/L
 RT: 8.07 min Scan# 1064
 Delta R.T. 0.00 min
 Lab File: VW004928.D
 Acq: 24 Aug 2018 05:46

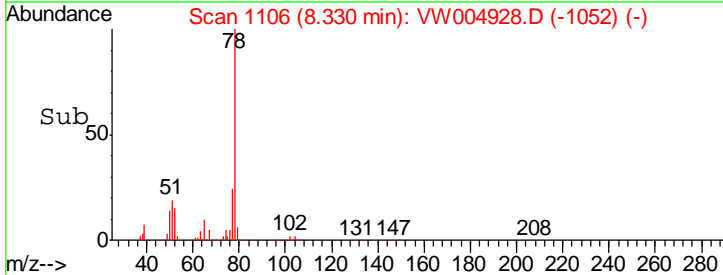
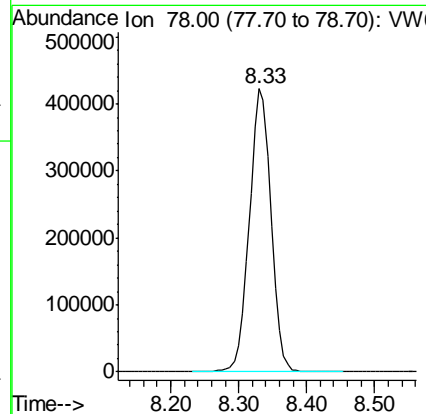
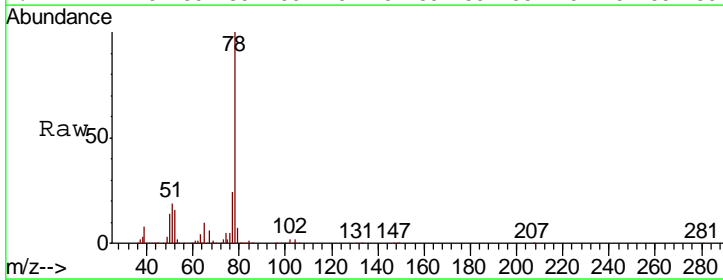
Instrument :
 MSVOA_W
 ClientSampled :

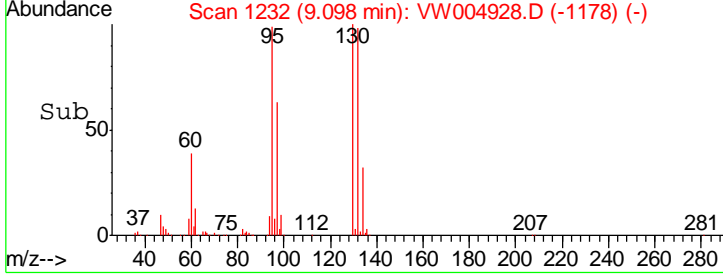
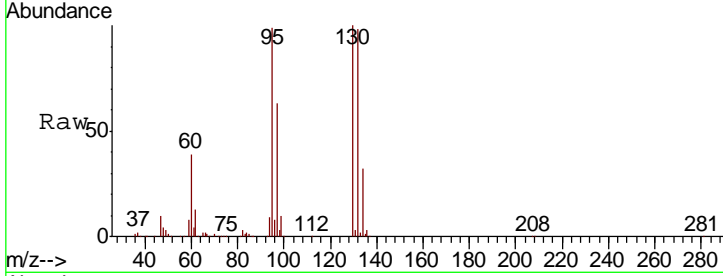
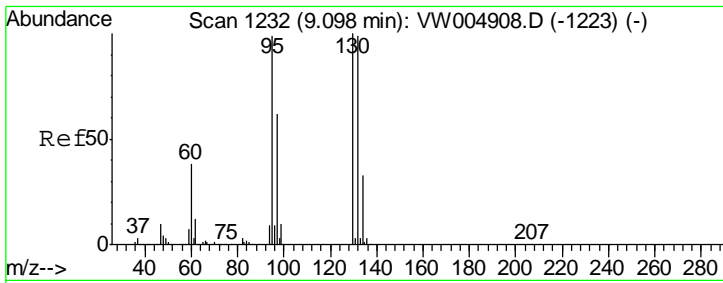
Tgt Ion: 117 Resp: 301355
 Ion Ratio Lower Upper
 117 100
 119 95.4 78.2 117.4



#34
 Benzene
 Concen: 24.511 ug/L
 RT: 8.33 min Scan# 1106
 Delta R.T. 0.00 min
 Lab File: VW004928.D
 Acq: 24 Aug 2018 05:46

Tgt Ion: 78 Resp: 935795

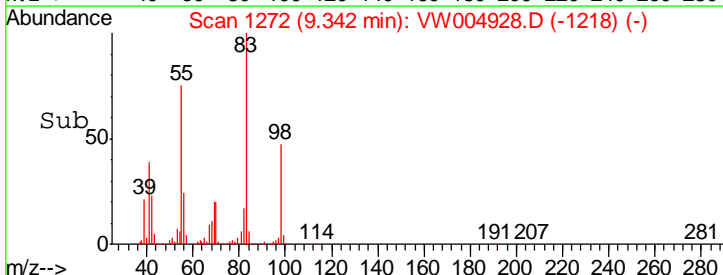
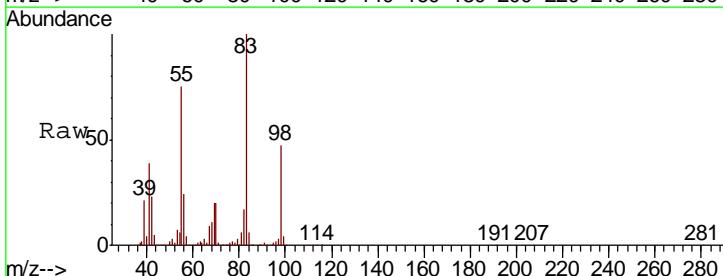
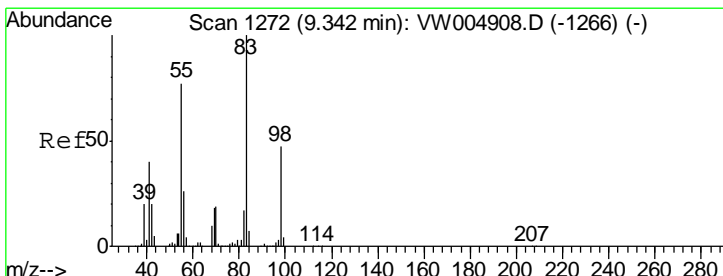
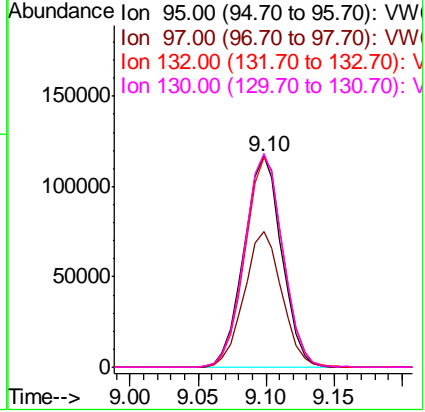




#35
 Trichloroethene
 Concen: 23.952 ug/L
 RT: 9.10 min Scan# 1232
 Delta R.T. 0.00 min
 Lab File: VW004928.D
 Acq: 24 Aug 2018 05:46

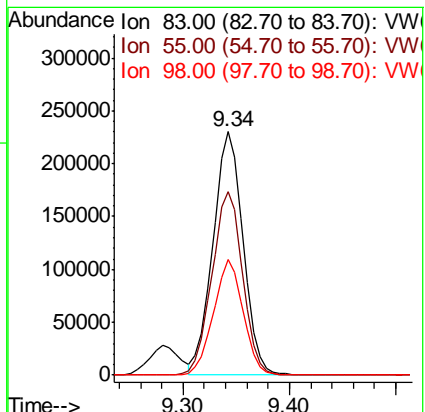
Instrument :
 MSVOA_W
 ClientSampled :

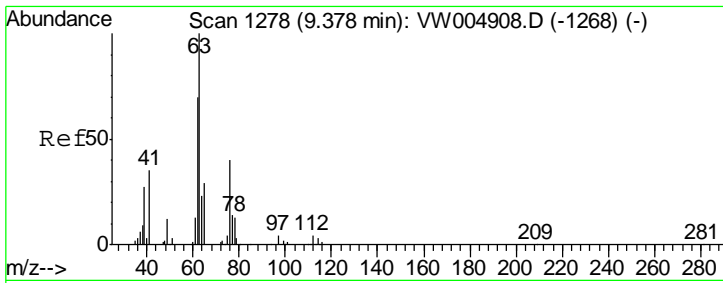
Tgt Ion	Resp	Lower	Upper
95	227391		
97	64.2	45.9	85.3
132	100.5	69.2	128.4
130	103.0	72.7	135.1



#36
 Methylcyclohexane
 Concen: 25.705 ug/L
 RT: 9.34 min Scan# 1272
 Delta R.T. 0.00 min
 Lab File: VW004928.D
 Acq: 24 Aug 2018 05:46

Tgt Ion	Resp	Lower	Upper
83	451377		
55	76.4	61.1	91.7
98	46.6	37.0	55.4

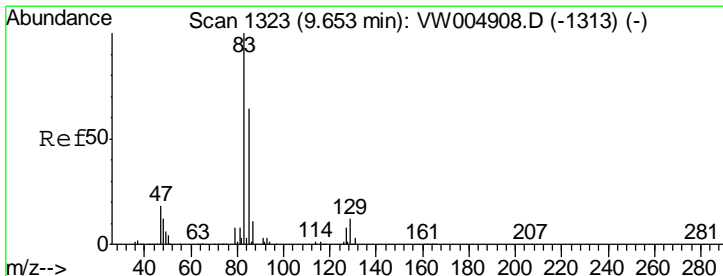
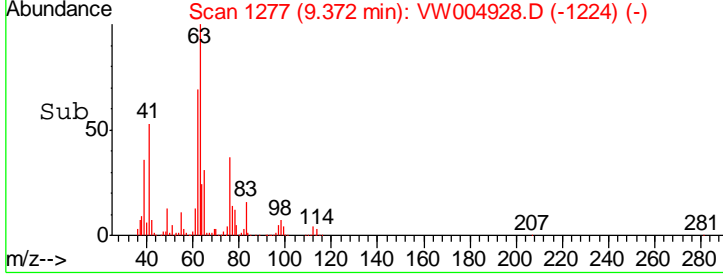
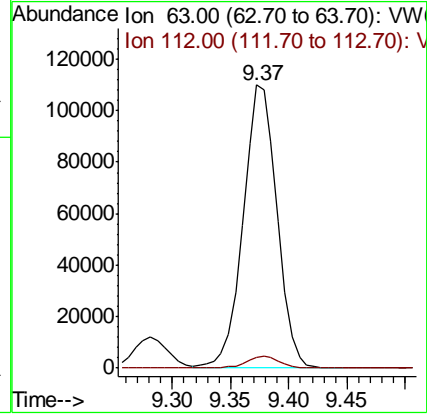
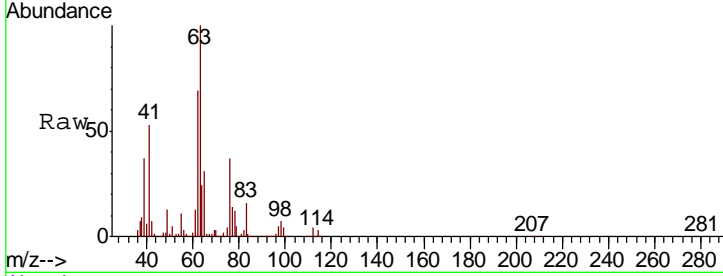




#40
 1,2-Dichloropropane
 Concen: 23.679 ug/L
 RT: 9.37 min Scan# 1277
 Delta R.T. -0.01 min
 Lab File: VW004928.D
 Acq: 24 Aug 2018 05:46

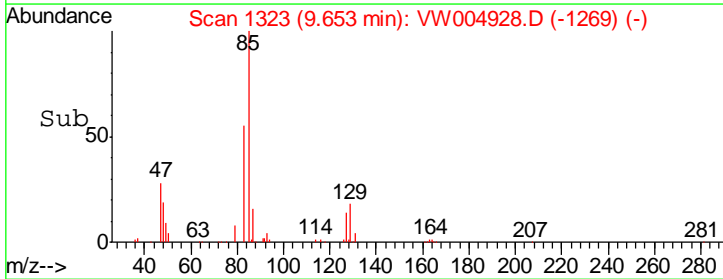
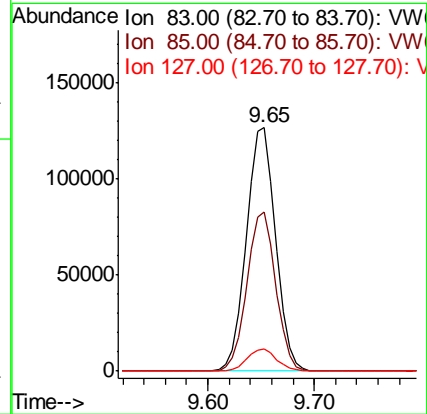
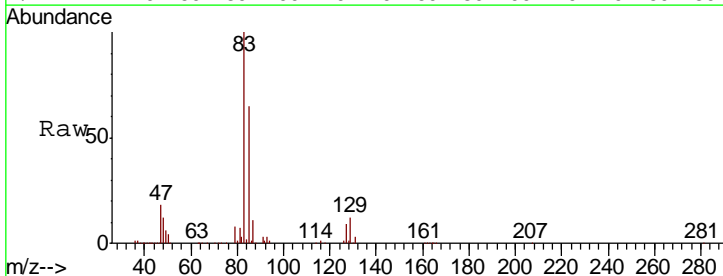
Instrument :
 MSVOA_W
 ClientSampled :

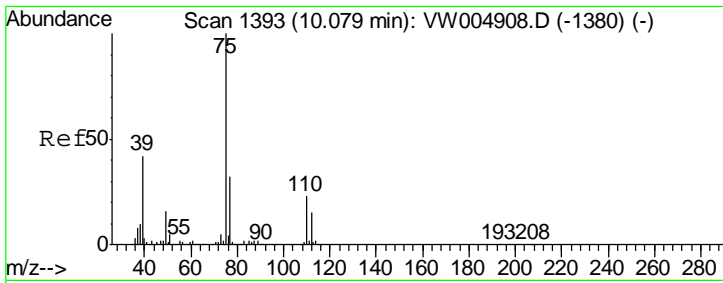
Tgt Ion	Resp	Lower	Upper
63	100		
112	4.2	3.2	4.8



#41
 Bromodichloromethane
 Concen: 23.598 ug/L
 RT: 9.65 min Scan# 1323
 Delta R.T. 0.00 min
 Lab File: VW004928.D
 Acq: 24 Aug 2018 05:46

Tgt Ion	Resp	Lower	Upper
83	100		
85	65.1	43.6	81.0
127	9.0	7.0	10.6

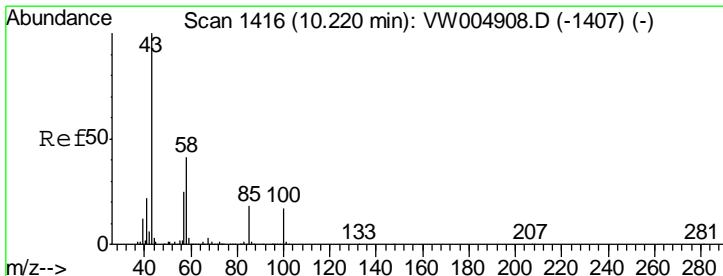
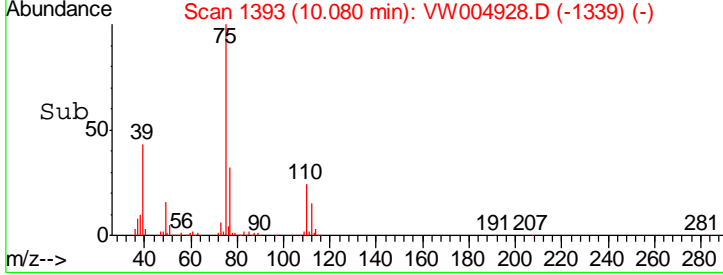
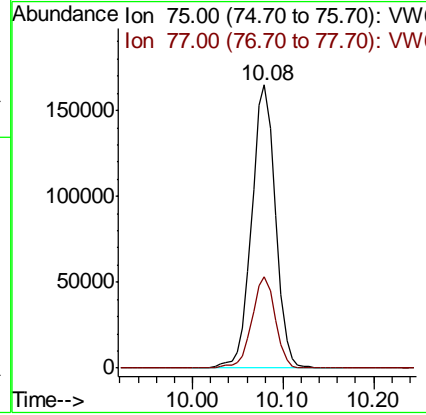
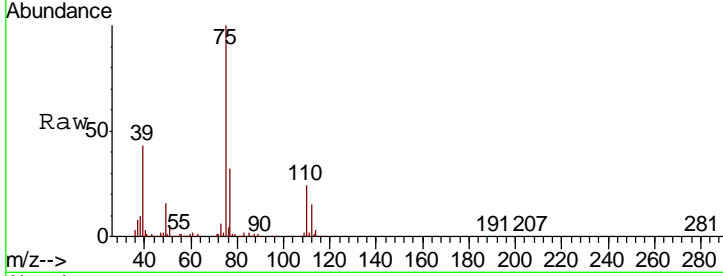




#42
 cis-1,3-Dichloropropene
 Concen: 23.024 ug/L
 RT: 10.08 min Scan# 1393
 Delta R.T. 0.00 min
 Lab File: VW004928.D
 Acq: 24 Aug 2018 05:46

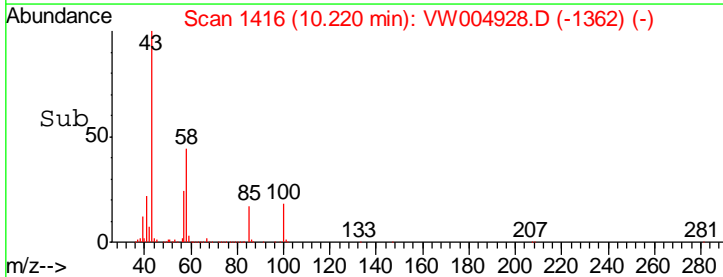
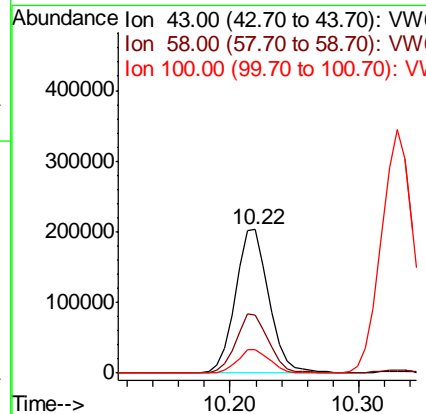
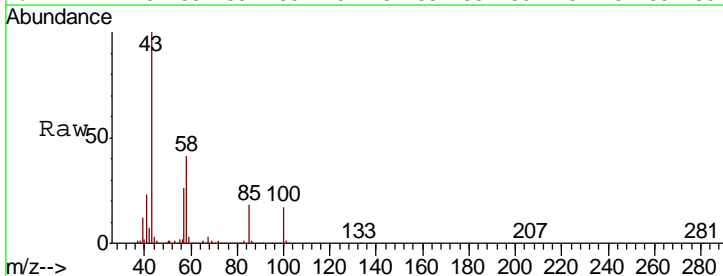
Instrument : MSVOA_W
 ClientSampled :

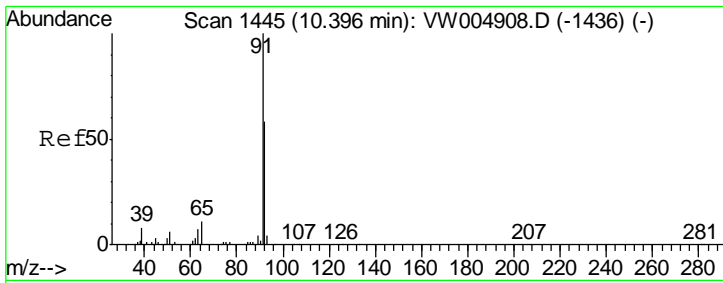
Tgt Ion	Resp	Lower	Upper
75	300159		
77	32.4	22.4	41.6



#43
 4-Methyl-2-pentanone
 Concen: 52.939 ug/L
 RT: 10.22 min Scan# 1416
 Delta R.T. 0.00 min
 Lab File: VW004928.D
 Acq: 24 Aug 2018 05:46

Tgt Ion	Resp	Lower	Upper
43	367019		
58	40.5	32.1	48.1
100	16.1	12.6	18.8



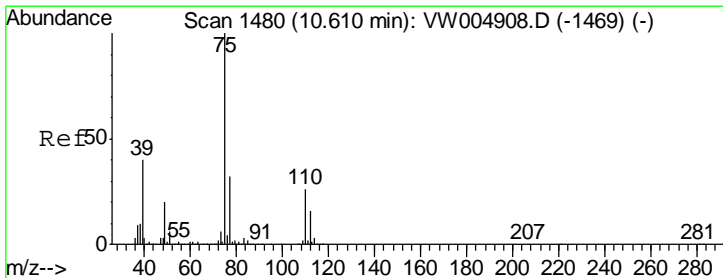
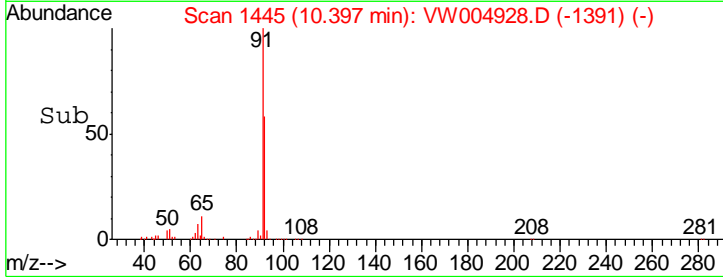
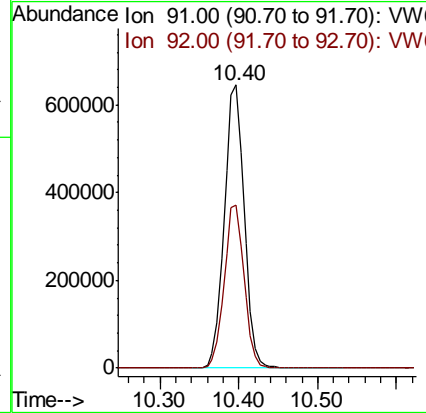
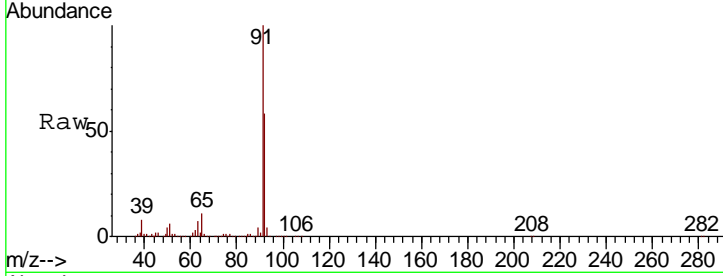


#44
 Toluene
 Concen: 24.740 ug/L
 RT: 10.40 min Scan# 1445
 Delta R.T. 0.00 min
 Lab File: VW004928.D
 Acq: 24 Aug 2018 05:46

Instrument :
 MSVOA_W
 ClientSampled :

Tgt Ion: 91 Resp: 1134312

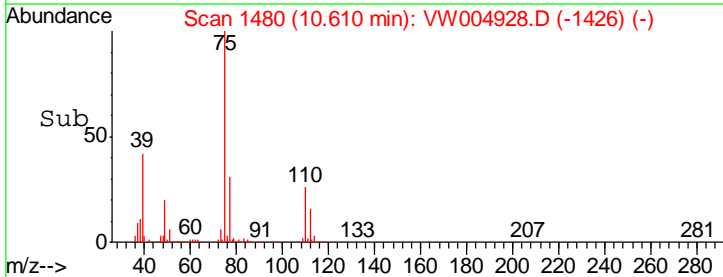
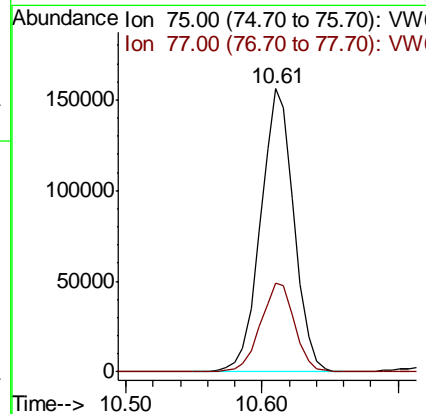
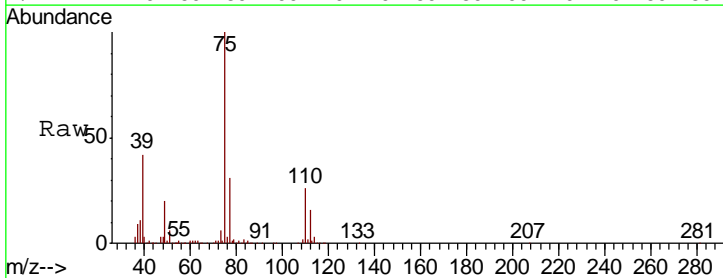
Ion	Ratio	Lower	Upper
91	100		
92	57.7	40.6	75.4

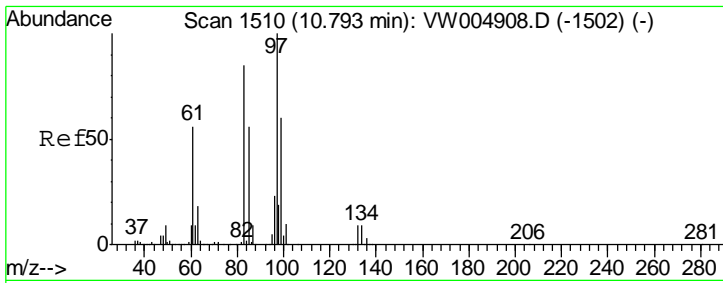


#45
 trans-1,3-Dichloropropene
 Concen: 22.595 ug/L
 RT: 10.61 min Scan# 1480
 Delta R.T. 0.00 min
 Lab File: VW004928.D
 Acq: 24 Aug 2018 05:46

Tgt Ion: 75 Resp: 267157

Ion	Ratio	Lower	Upper
75	100		
77	31.5	22.2	41.2

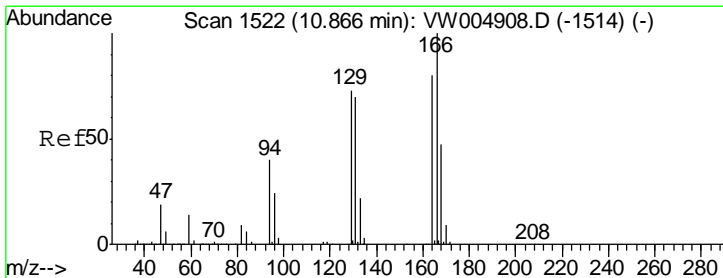
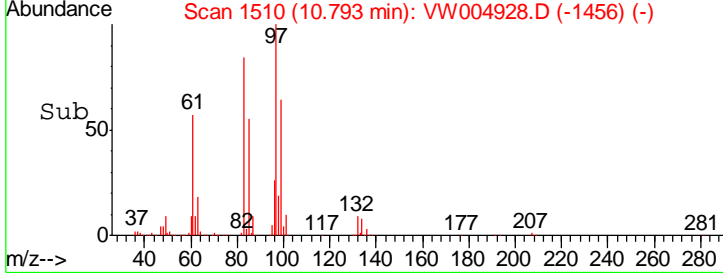
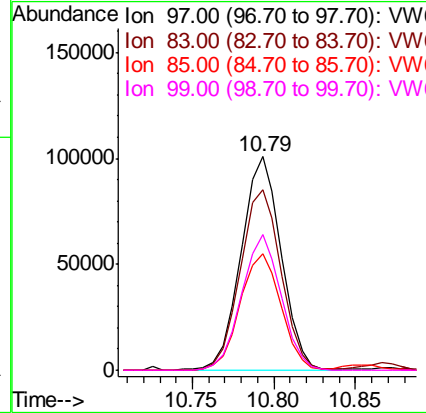
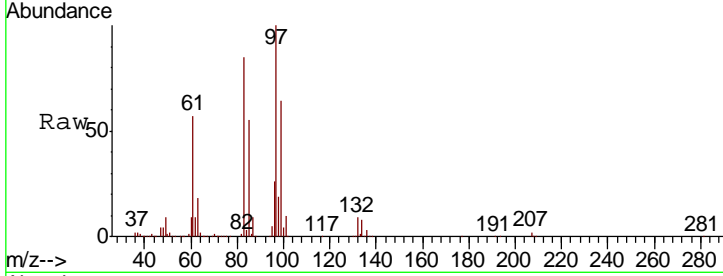




#46
 1,1,2-Trichloroethane
 Concen: 23.492 ug/L
 RT: 10.79 min Scan# 1510
 Delta R.T. 0.00 min
 Lab File: VW004928.D
 Acq: 24 Aug 2018 05:46

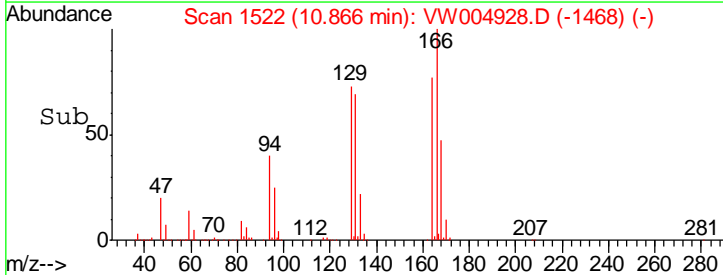
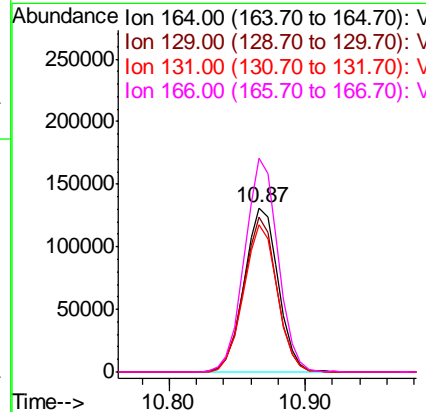
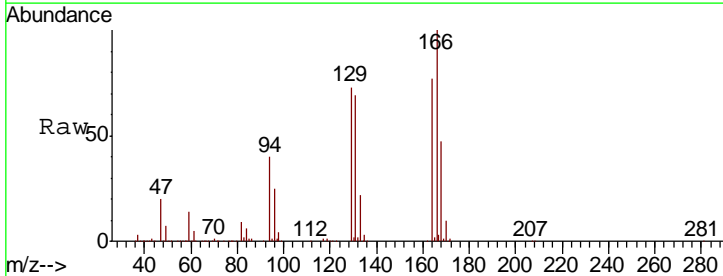
Instrument : MSVOA_W
 ClientSampled :

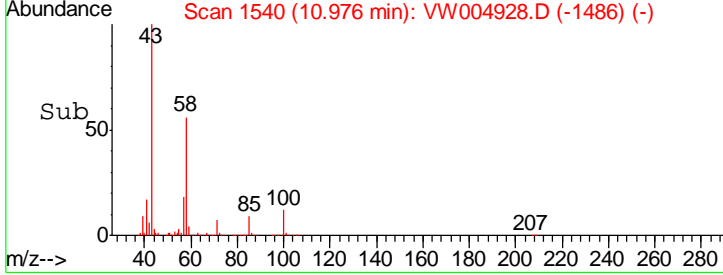
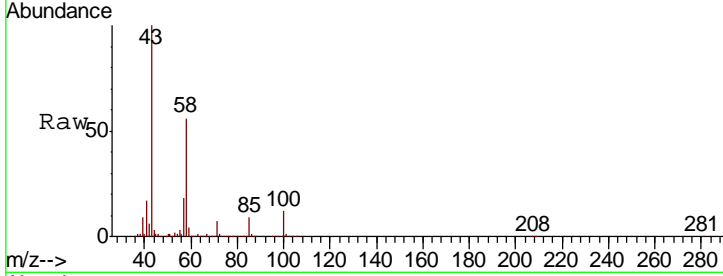
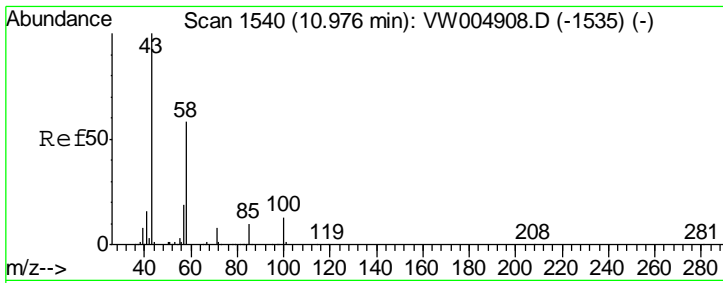
Tgt Ion	Resp	Lower	Upper
97	172212		
83	84.6	59.6	110.8
85	54.6	38.1	70.9
99	63.6	43.8	81.3



#47
 Tetrachloroethene
 Concen: 24.698 ug/L
 RT: 10.87 min Scan# 1522
 Delta R.T. 0.00 min
 Lab File: VW004928.D
 Acq: 24 Aug 2018 05:46

Tgt Ion	Resp	Lower	Upper
164	229548		
164	100		
129	94.6	66.8	124.0
131	89.8	64.0	119.0
166	130.0	89.8	166.8



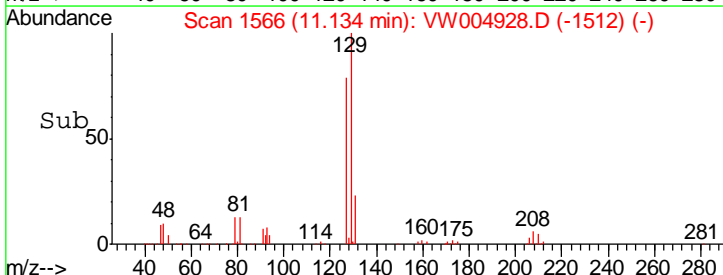
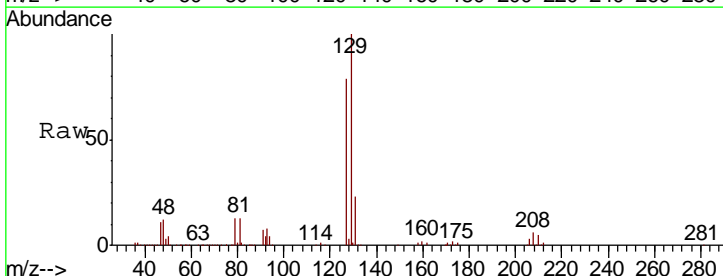
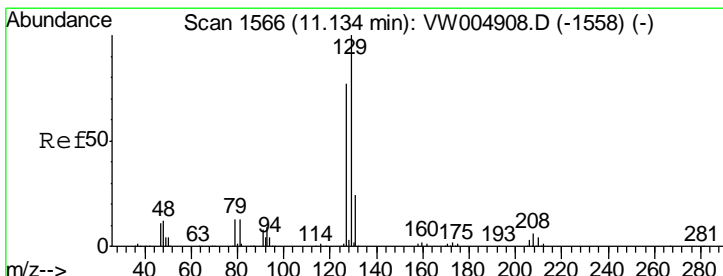
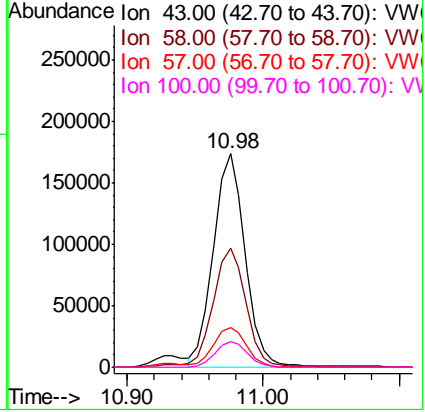


#49
 2-Hexanone
 Concen: 52.718 ug/L
 RT: 10.98 min Scan# 1540
 Delta R.T. 0.00 min
 Lab File: VW004928.D
 Acq: 24 Aug 2018 05:46

Instrument : MSVOA_W
 ClientSampled :

Tgt Ion: 43 Resp: 282440

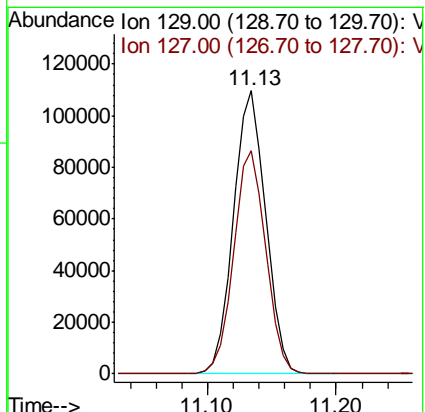
Ion	Ratio	Lower	Upper
43	100		
58	57.4	44.6	67.0
57	18.6	15.4	23.2
100	12.3	9.6	14.4

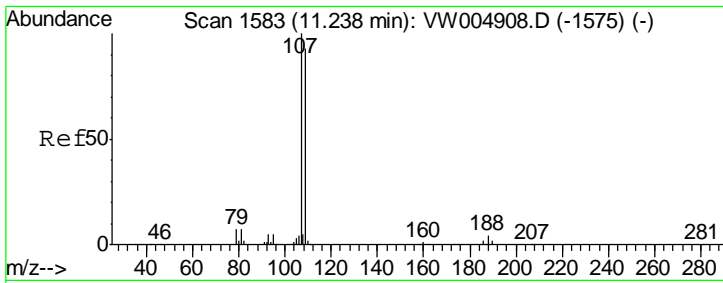


#50
 Dibromochloromethane
 Concen: 23.422 ug/L
 RT: 11.13 min Scan# 1566
 Delta R.T. 0.00 min
 Lab File: VW004928.D
 Acq: 24 Aug 2018 05:46

Tgt Ion: 129 Resp: 190616

Ion	Ratio	Lower	Upper
129	100		
127	78.9	53.8	99.8

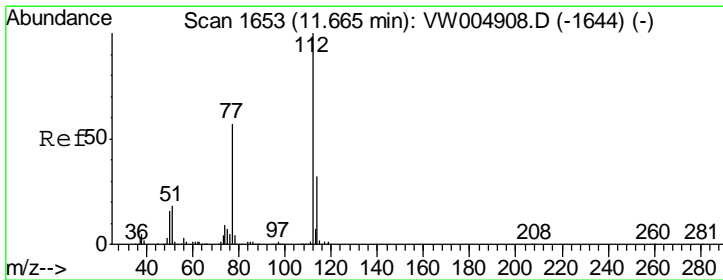
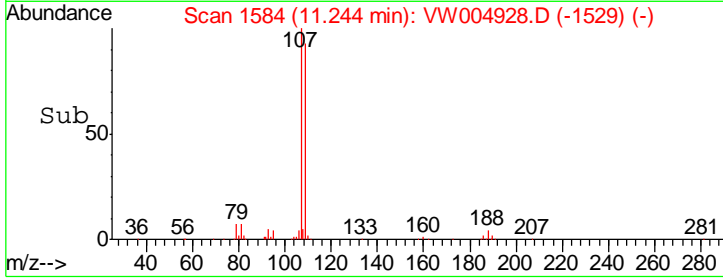
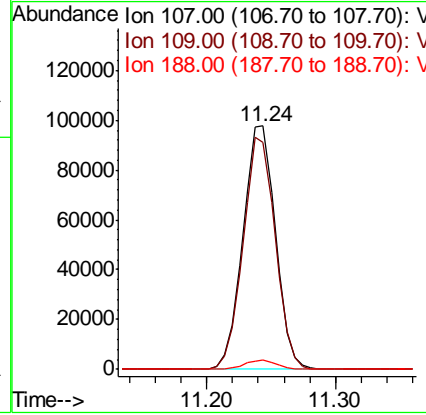
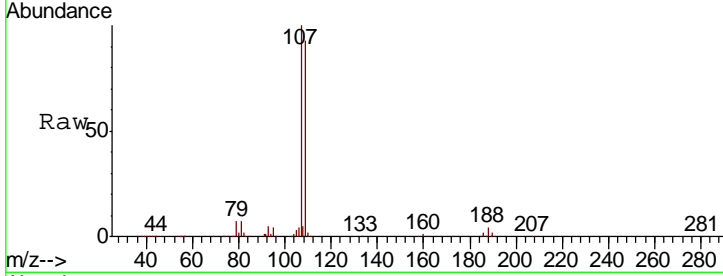




#51
 1,2-Dibromoethane
 Concen: 23.657 ug/L
 RT: 11.24 min Scan# 1584
 Delta R.T. 0.01 min
 Lab File: VW004928.D
 Acq: 24 Aug 2018 05:46

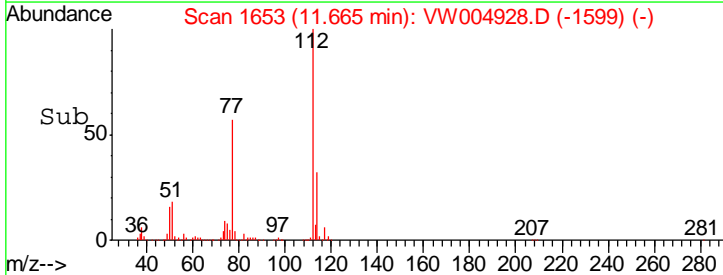
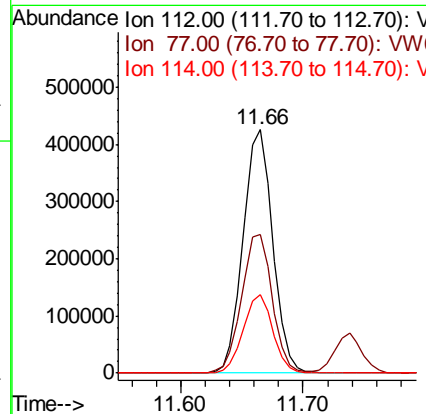
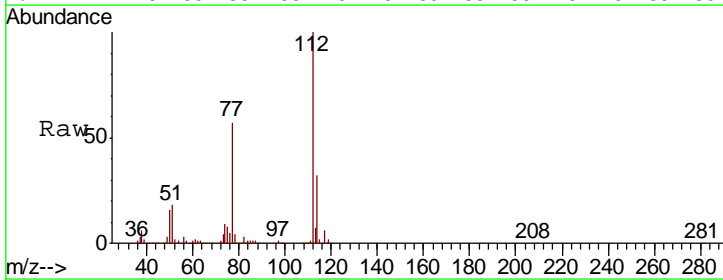
Instrument : MSVOA_W
 ClientSampled :

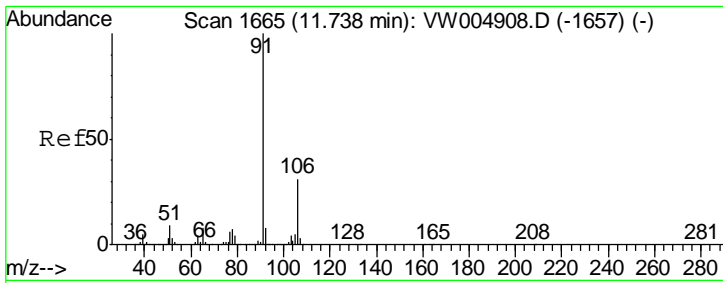
Tgt Ion	Resp	Lower	Upper
107	170232		
109	93.4	67.3	124.9
188	3.7	3.0	4.6



#52
 Chlorobenzene
 Concen: 23.518 ug/L
 RT: 11.66 min Scan# 1653
 Delta R.T. 0.00 min
 Lab File: VW004928.D
 Acq: 24 Aug 2018 05:46

Tgt Ion	Resp	Lower	Upper
112	716293		
77	56.8	45.8	68.8
114	32.5	22.5	41.7

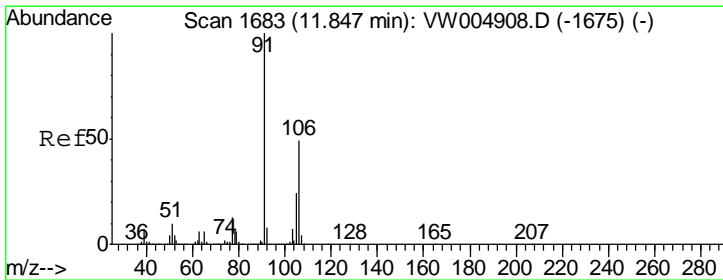
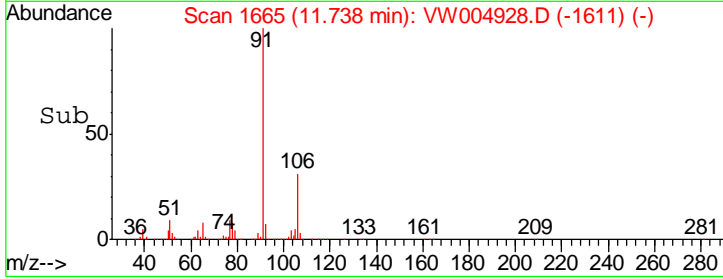
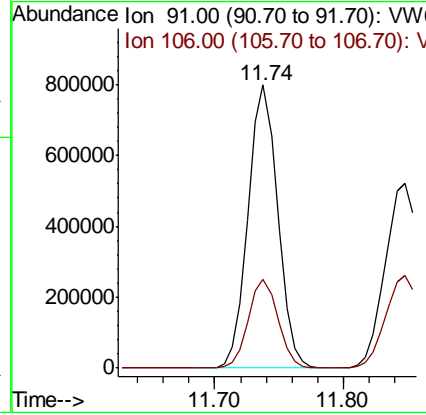
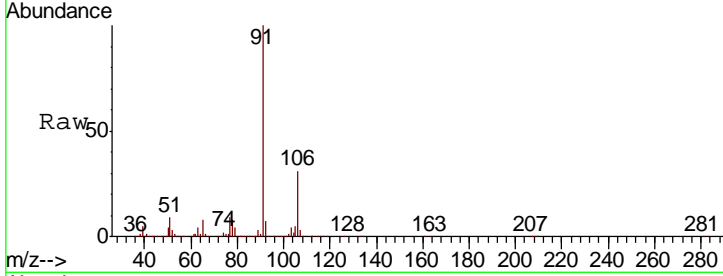




#53
 Ethylbenzene
 Concen: 24.585 ug/L
 RT: 11.74 min Scan# 1665
 Delta R.T. 0.00 min
 Lab File: VW004928.D
 Acq: 24 Aug 2018 05:46

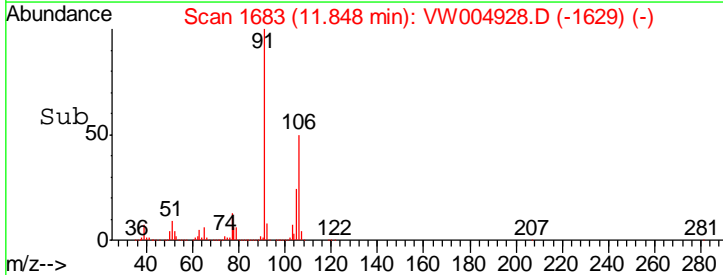
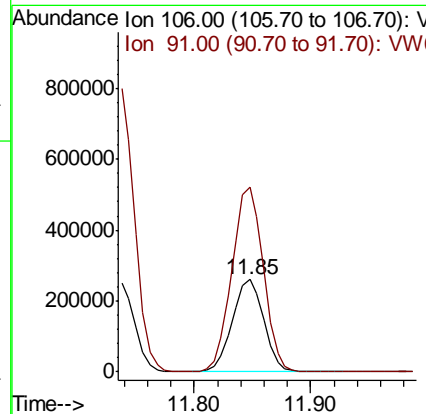
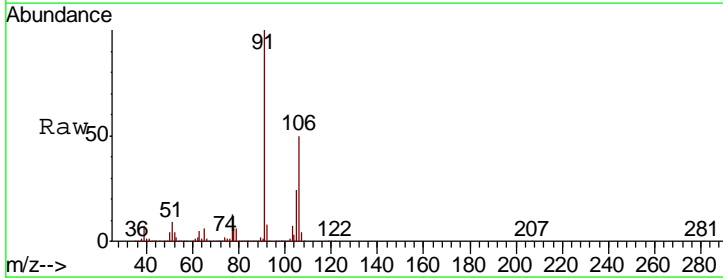
Instrument : MSVOA_W
 ClientSampled :

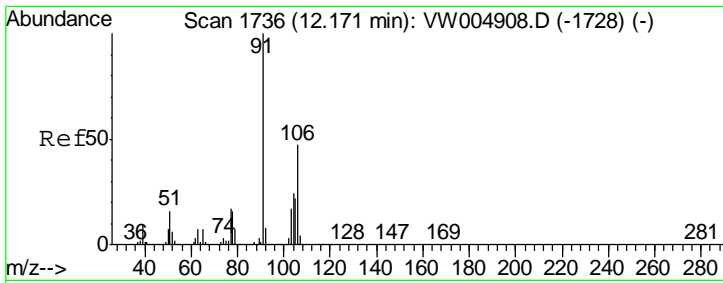
Tgt Ion	Resp	Lower	Upper
91	100		
106	31.4	21.6	40.2



#54
 m,p-Xylene
 Concen: 24.417 ug/L
 RT: 11.85 min Scan# 1683
 Delta R.T. 0.00 min
 Lab File: VW004928.D
 Acq: 24 Aug 2018 05:46

Tgt Ion	Resp	Lower	Upper
106	100		
91	200.3	141.4	262.6

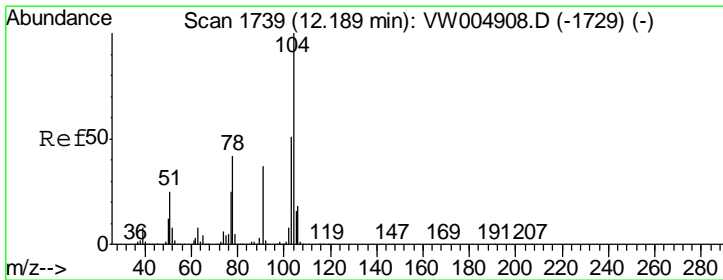
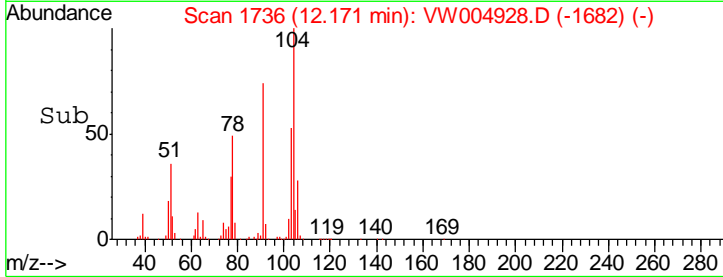
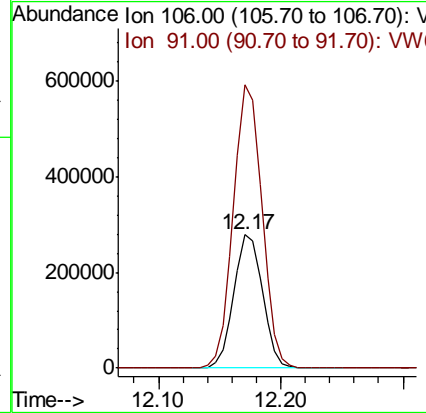
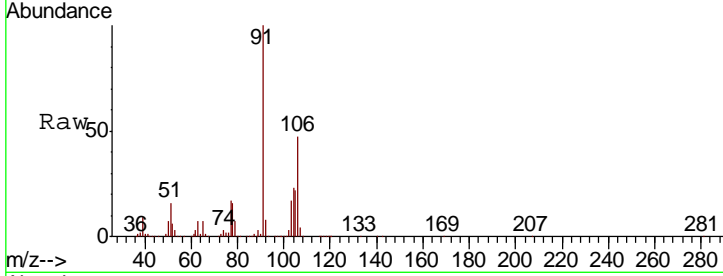




#55
 o-xylene
 Concen: 24.277 ug/L
 RT: 12.17 min Scan# 1736
 Delta R.T. 0.00 min
 Lab File: VW004928.D
 Acq: 24 Aug 2018 05:46

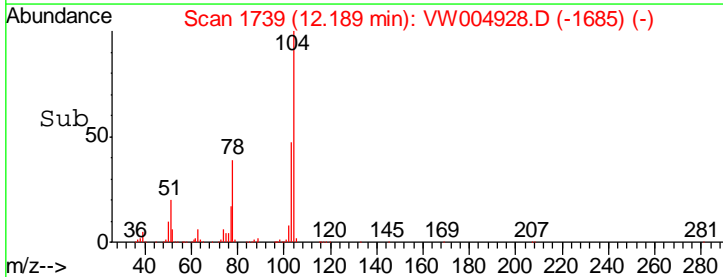
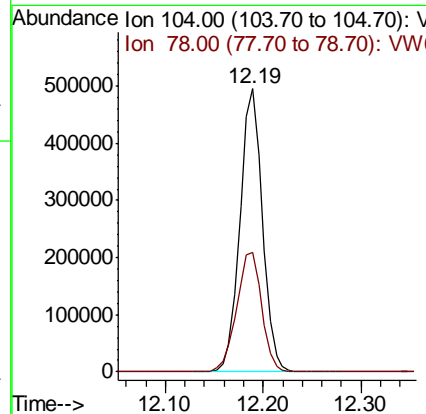
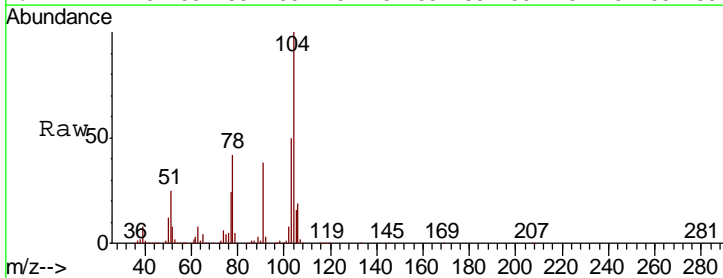
Instrument : MSVOA_W
 Client Sampled :

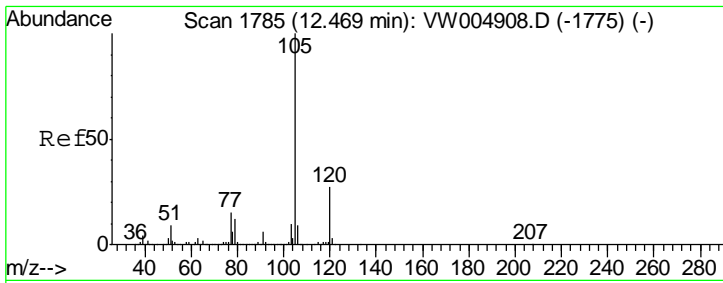
Tgt Ion	Resp	Lower	Upper
106	453998		
106	100		
91	211.9	147.0	273.0



#56
 Styrene
 Concen: 24.587 ug/L
 RT: 12.19 min Scan# 1739
 Delta R.T. 0.00 min
 Lab File: VW004928.D
 Acq: 24 Aug 2018 05:46

Tgt Ion	Resp	Lower	Upper
104	790000		
104	100		
78	42.3	29.8	55.3

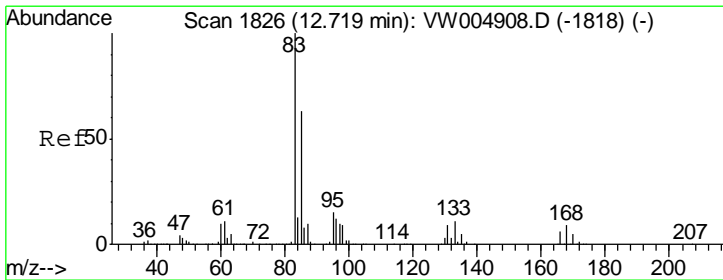
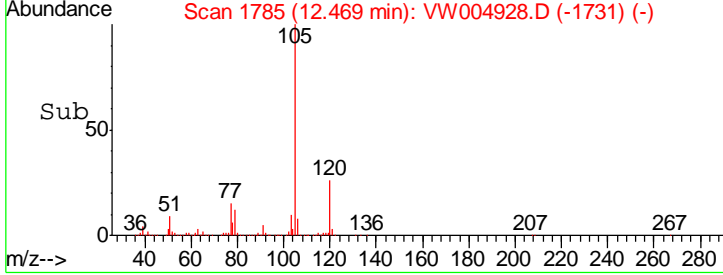
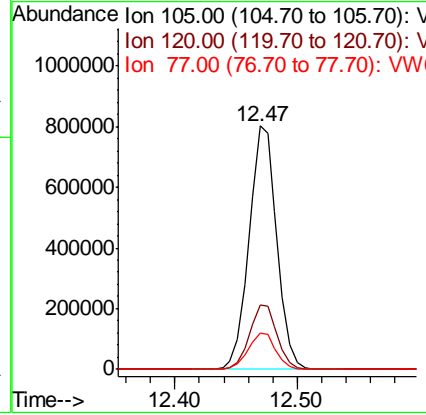
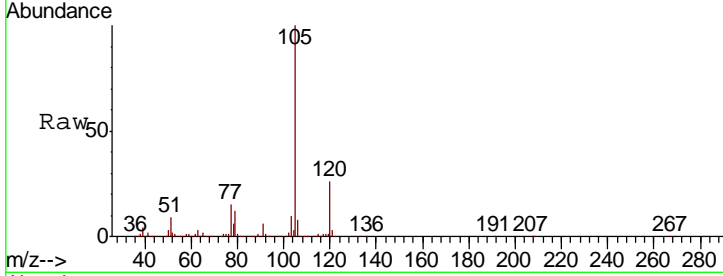




#57
 Isopropylbenzene
 Concen: 25.162 ug/L
 RT: 12.47 min Scan# 1785
 Delta R.T. 0.00 min
 Lab File: VW004928.D
 Acq: 24 Aug 2018 05:46

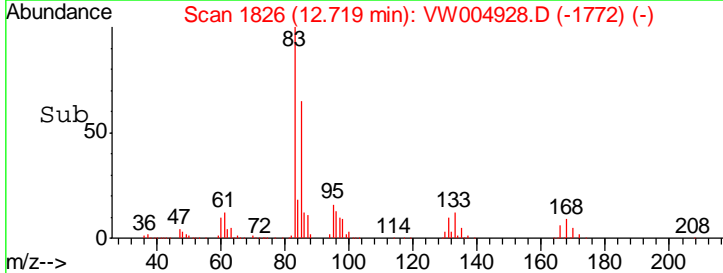
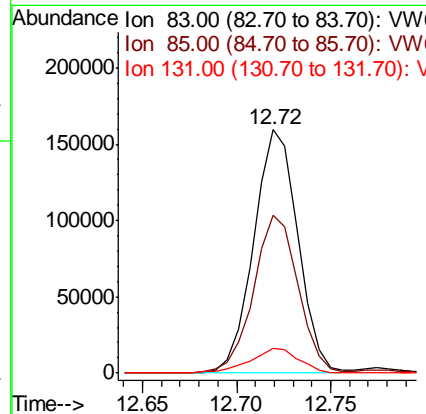
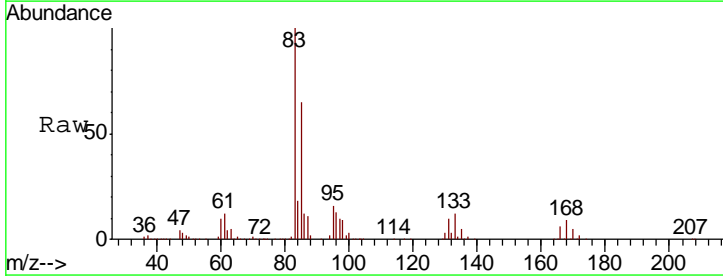
Instrument :
 MSVOA_W
 ClientSampled :

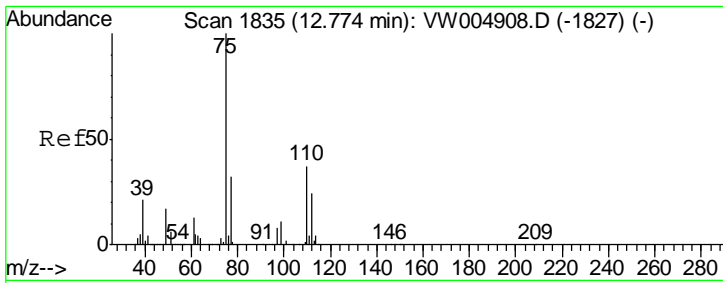
Tgt Ion	Resp	Lower	Upper
105	1256857		
120	26.5	21.3	31.9
77	14.9	12.0	18.0



#58
 1,1,2,2-Tetrachloroethane
 Concen: 24.802 ug/L
 RT: 12.72 min Scan# 1826
 Delta R.T. 0.00 min
 Lab File: VW004928.D
 Acq: 24 Aug 2018 05:46

Tgt Ion	Resp	Lower	Upper
83	259123		
85	64.9	46.3	85.9
131	10.0	7.8	11.6

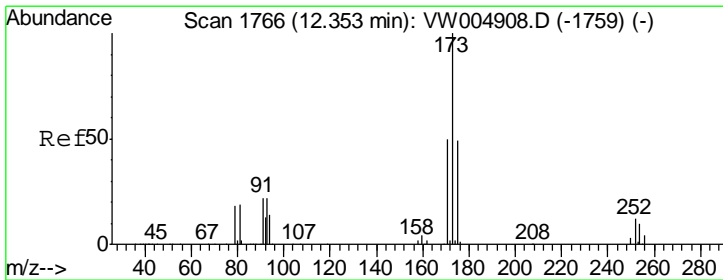
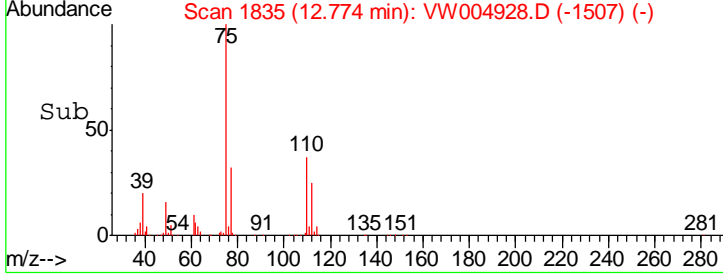
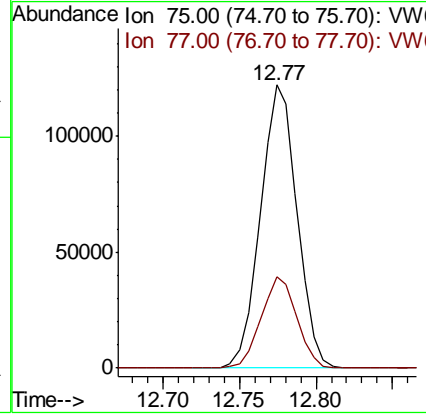
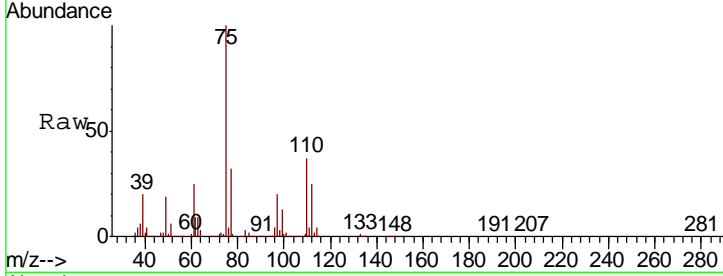




#59
 1,2,3-Trichloropropane
 Concen: 25.158 ug/L
 RT: 12.77 min Scan# 1835
 Delta R.T. 0.00 min
 Lab File: VW004928.D
 Acq: 24 Aug 2018 05:46

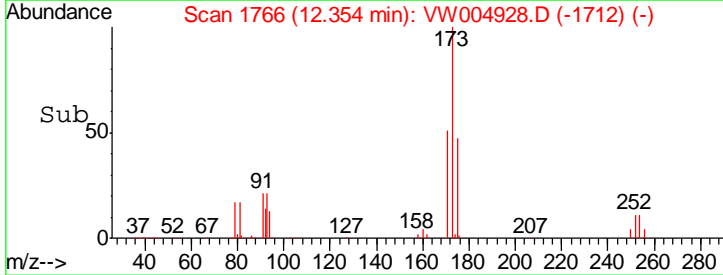
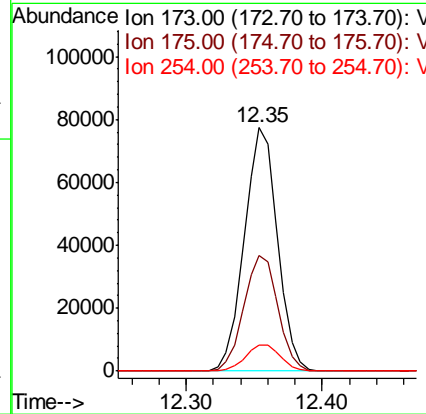
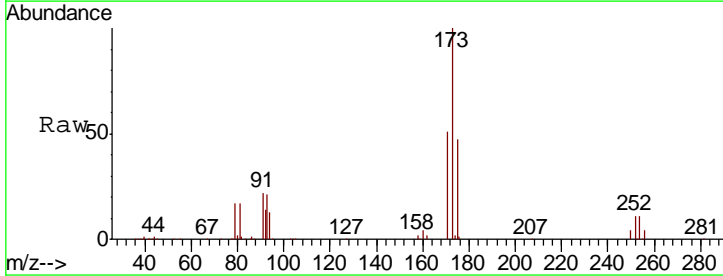
Instrument :
 MSVOA_W
 ClientSampled :

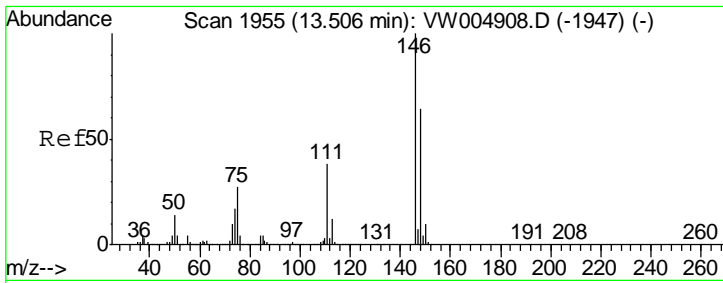
Tgt Ion	Resp	Lower	Upper
75	100		
77	31.8	25.3	37.9



#62
 Bromoform
 Concen: 24.983 ug/L
 RT: 12.35 min Scan# 1766
 Delta R.T. 0.00 min
 Lab File: VW004928.D
 Acq: 24 Aug 2018 05:46

Tgt Ion	Resp	Lower	Upper
173	100		
175	48.7	39.0	58.6
254	11.2	9.0	13.6

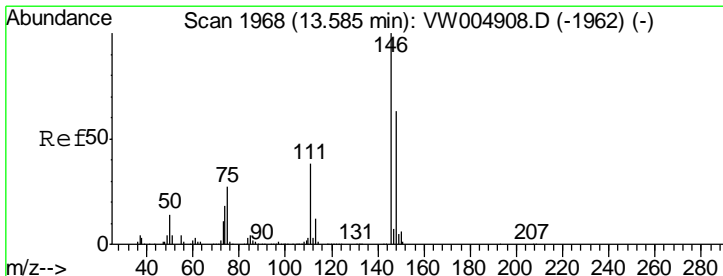
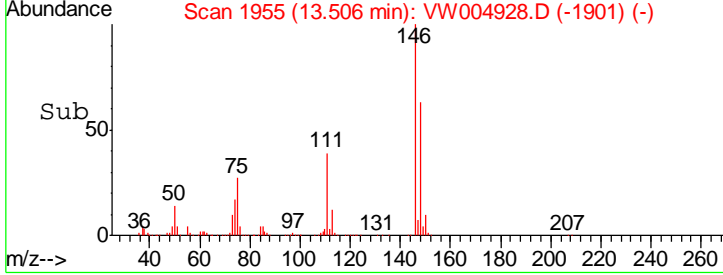
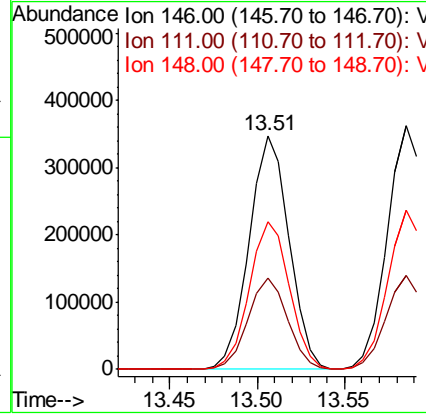
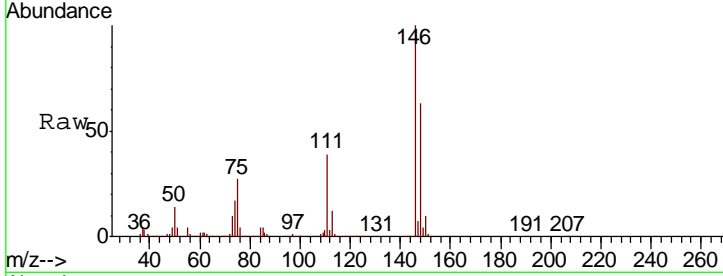




#63
 1,3-Dichlorobenzene
 Concen: 24.061 ug/L
 RT: 13.51 min Scan# 1955
 Delta R.T. 0.00 min
 Lab File: VW004928.D
 Acq: 24 Aug 2018 05:46

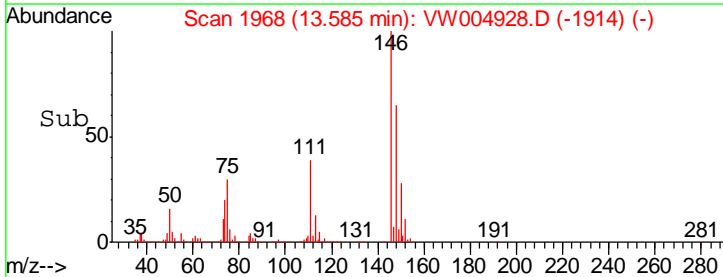
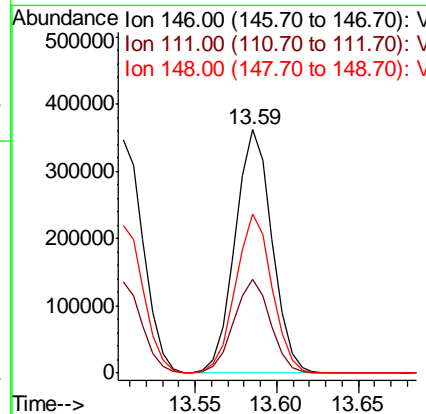
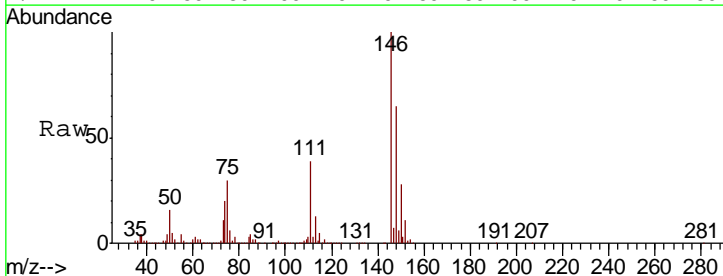
Instrument :
 MSVOA_W
 ClientSampled :

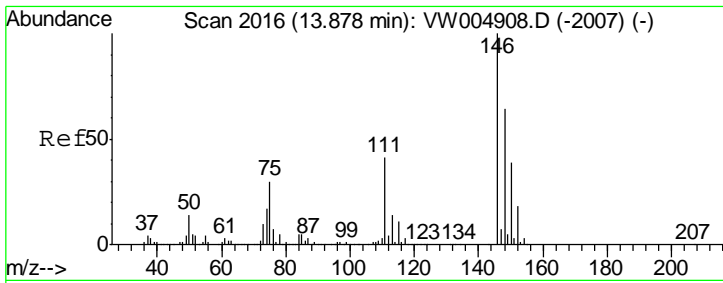
Tgt Ion	Resp	Lower	Upper
146	100		
111	38.9	25.6	47.6
148	63.4	42.7	79.3



#64
 1,4-Dichlorobenzene
 Concen: 23.808 ug/L
 RT: 13.59 min Scan# 1968
 Delta R.T. 0.00 min
 Lab File: VW004928.D
 Acq: 24 Aug 2018 05:46

Tgt Ion	Resp	Lower	Upper
146	100		
111	38.6	27.6	51.4
148	65.1	45.8	85.0

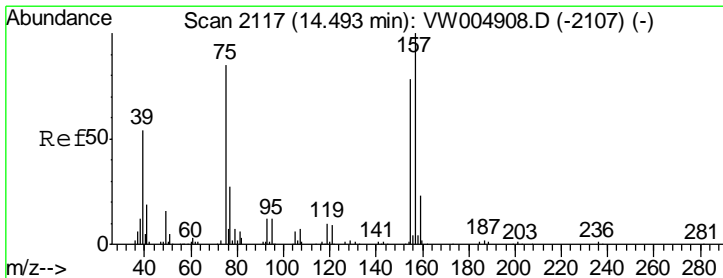
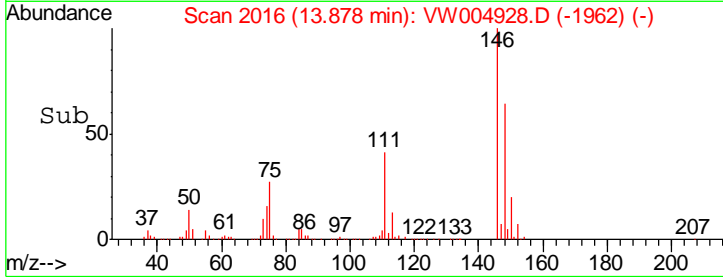
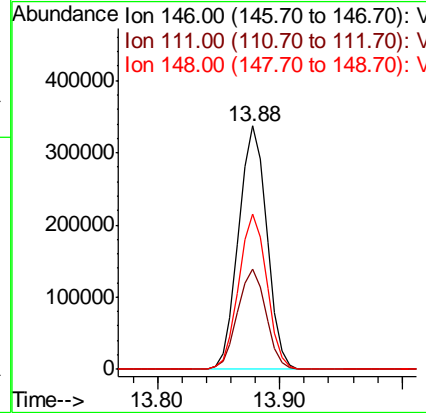
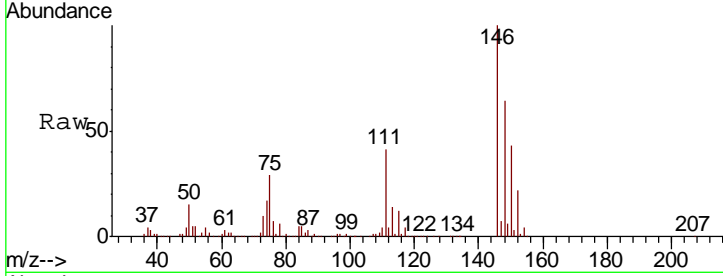




#65
 1,2-Dichlorobenzene
 Concen: 24.492 ug/L
 RT: 13.88 min Scan# 2016
 Delta R.T. 0.00 min
 Lab File: VW004928.D
 Acq: 24 Aug 2018 05:46

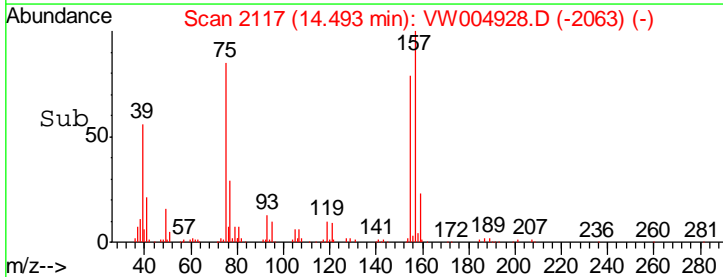
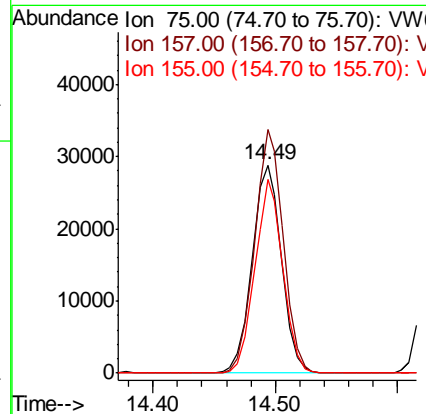
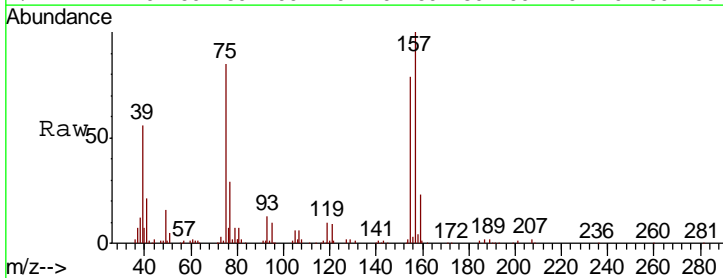
Instrument :
 MSVOA_W
 ClientSampled :

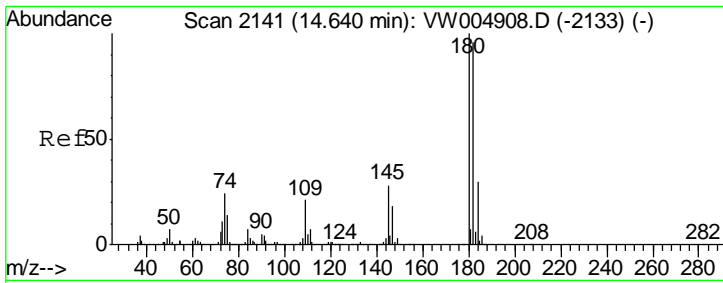
Tgt Ion	Resp	Lower	Upper
146	100		
111	41.0	32.0	48.0
148	63.9	50.6	75.8



#66
 1,2-Dibromo-3-chloropropane
 Concen: 25.794 ug/L
 RT: 14.49 min Scan# 2117
 Delta R.T. 0.00 min
 Lab File: VW004928.D
 Acq: 24 Aug 2018 05:46

Tgt Ion	Resp	Lower	Upper
75	100		
157	117.0	90.7	136.1
155	93.0	69.5	104.3

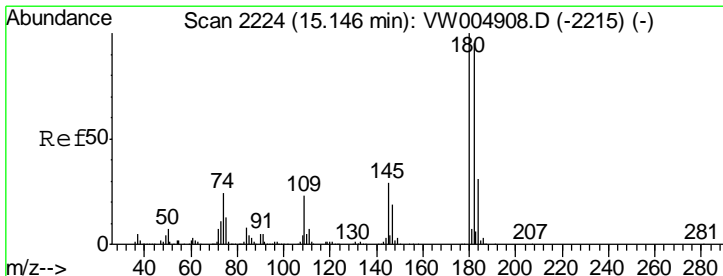
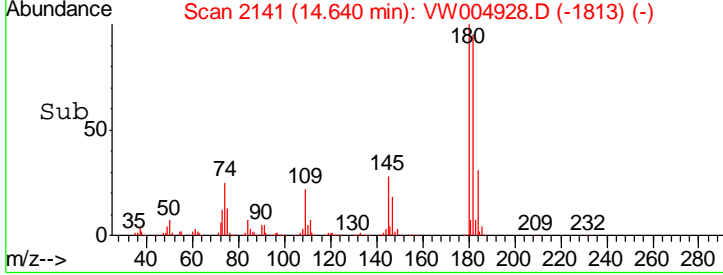
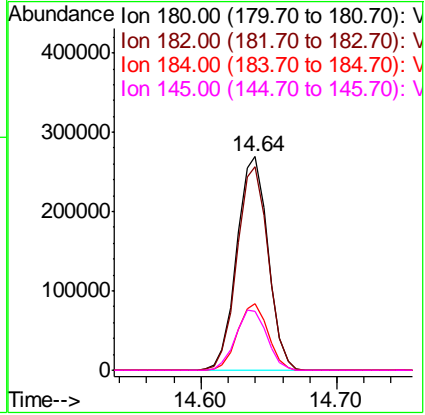
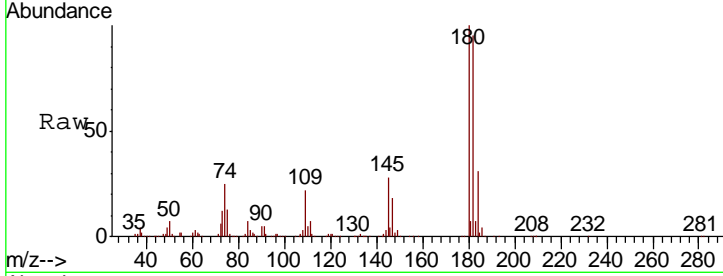




#67
 1,3,5-Trichlorobenzene
 Concen: 23.534 ug/L
 RT: 14.64 min Scan# 2141
 Delta R.T. 0.00 min
 Lab File: VW004928.D
 Acq: 24 Aug 2018 05:46

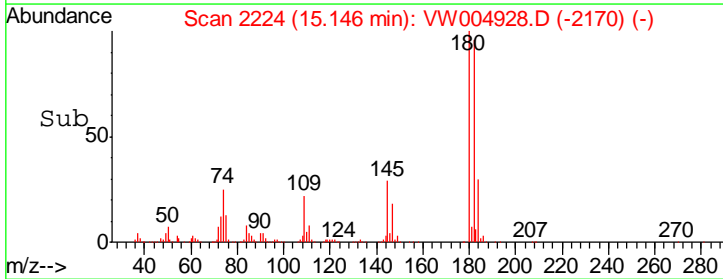
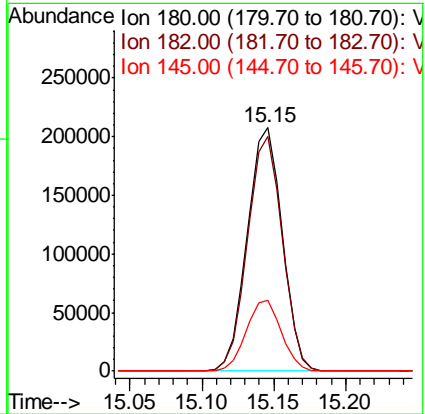
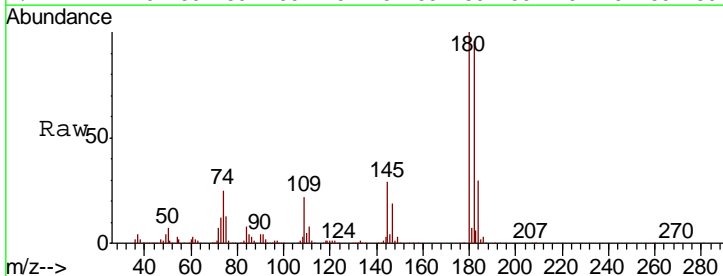
Instrument :
 MSVOA_W
 ClientSampled :

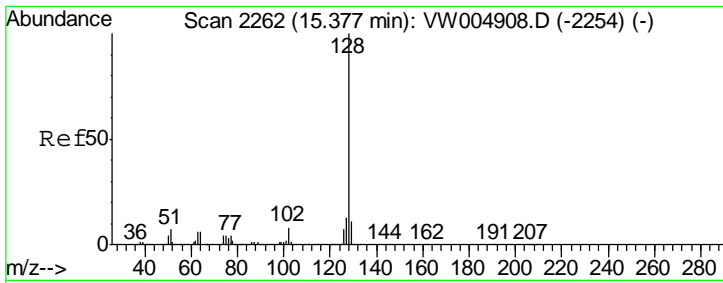
Tgt Ion	Resp	Lower	Upper
180	100		
182	95.1	76.0	114.0
184	30.5	24.3	36.5
145	28.4	23.0	34.6



#68
 1,2,4-trichlorobenzene
 Concen: 23.555 ug/L
 RT: 15.15 min Scan# 2224
 Delta R.T. 0.00 min
 Lab File: VW004928.D
 Acq: 24 Aug 2018 05:46

Tgt Ion	Resp	Lower	Upper
180	100		
182	95.9	76.1	114.1
145	29.2	23.3	34.9

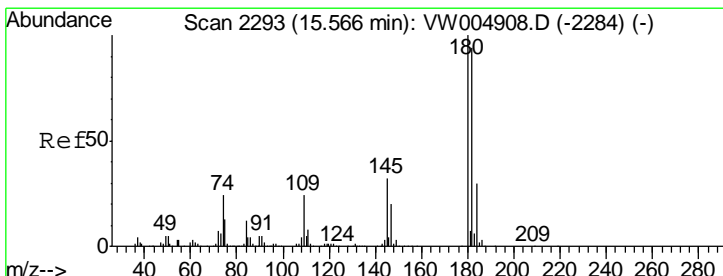
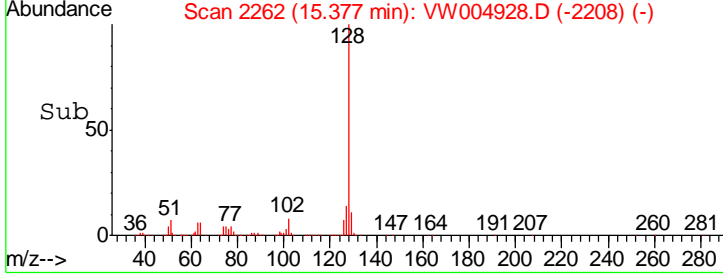
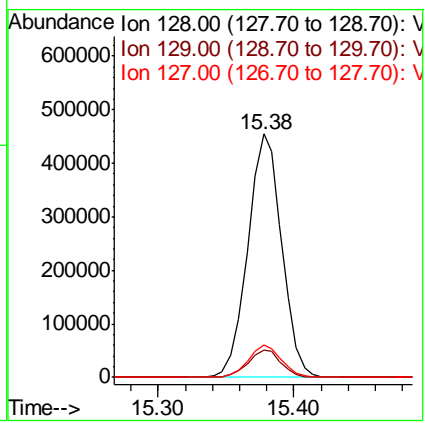
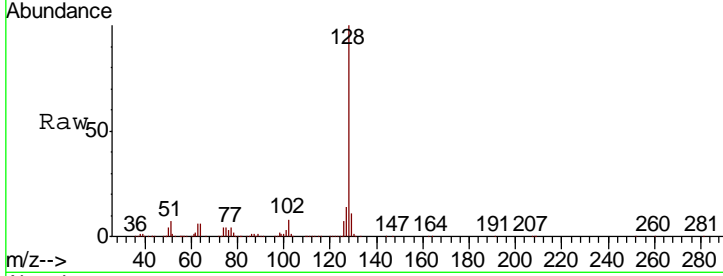




#69
 Naphthalene
 Concen: 26.394 ug/L
 RT: 15.38 min Scan# 2262
 Delta R.T. 0.00 min
 Lab File: VW004928.D
 Acq: 24 Aug 2018 05:46

Instrument : MSVOA_W
 ClientSampled :

Tgt Ion	Resp	Lower	Upper
128	792823		
129	11.0	8.9	13.3
127	13.0	10.6	15.8



#70
 1,2,3-Trichlorobenzene
 Concen: 25.192 ug/L
 RT: 15.57 min Scan# 2293
 Delta R.T. 0.00 min
 Lab File: VW004928.D
 Acq: 24 Aug 2018 05:46

Tgt Ion	Resp	Lower	Upper
180	350652		
182	95.6	75.8	113.6
145	31.2	24.6	37.0

