

Data Path : Z:\VOASRV\HPCHEM1\MSVOA W\DATA\VW082318\
 Data File : VW004918.D
 Acq On : 24 Aug 2018 01:33
 Operator : SY/AP
 Sample : J4628-12
 Misc : 7.08G/10ML/MSVOA W/SOIL
 ALS Vial : 1 Sample Multiplier: 1

Instrument :
 MSVOA_W
 ClientSampleId :
 DB3F7

Integration Parameters: LSCINT.P

Integrator: RTE
 Smoothing : OFF
 Sampling : 1
 Start Thrs: 0.2
 Stop Thrs : 0

Filtering: 5
 Min Area: 0 % of largest Peak
 Max Peaks: 100
 Peak Location: TOP

If leading or trailing edge < 100 prefer < Baseline drop else tangent >
 Peak separation: 5

Method : Z:\VOASRV\HPCHEM1\MSVOA_W\METHOD\SOM2WLM082218S.M
 Title : VOC Analysis

Signal : TIC

peak #	R.T. min	first scan	max scan	last scan	PK TY	peak height	corr. area	corr. % max.	% of total
1	1.794	28	34	50	rBV	4722567	8092013	100.00%	36.524%
2	2.355	120	126	137	rVB	256436	424239	5.24%	1.915%
3	2.892	208	214	223	rVB	191209	367245	4.54%	1.658%
4	3.386	290	295	299	rBV6	909	2163	0.03%	0.010%
5	3.672	340	342	353	rVV7	1250	2183	0.03%	0.010%
6	3.770	357	358	361	rBV2	410	431	0.01%	0.002%
7	4.026	389	400	413	rBV	260796	682628	8.44%	3.081%
8	4.337	450	451	453	rBV2	707	578	0.01%	0.003%
9	4.550	484	486	489	rVB2	366	381	0.00%	0.002%
10	4.678	506	507	509	rBV2	777	413	0.01%	0.002%
11	4.928	539	548	558	rBV3	10562	32322	0.40%	0.146%
12	5.111	575	578	580	rBV	444	542	0.01%	0.002%
13	5.178	588	589	591	rVB	637	271	0.00%	0.001%
14	5.208	593	594	595	rBV	592	372	0.00%	0.002%
15	5.245	598	600	602	rBV3	312	287	0.00%	0.001%
16	5.330	612	614	615	rBV2	582	356	0.00%	0.002%
17	5.349	615	617	620	rBV3	324	377	0.00%	0.002%
18	5.385	621	623	625	rVB2	446	331	0.00%	0.001%
19	5.416	625	628	630	rBV2	356	392	0.00%	0.002%
20	5.465	635	636	639	rVB3	532	489	0.01%	0.002%
21	5.495	639	641	644	rVB3	352	314	0.00%	0.001%
22	5.532	646	647	648	rBV	343	209	0.00%	0.001%
23	5.593	655	657	659	rVB2	399	309	0.00%	0.001%
24	5.647	664	666	667	rBV	547	418	0.01%	0.002%
25	5.678	668	671	672	rBV	680	508	0.01%	0.002%
26	5.763	683	685	688	rVB3	444	356	0.00%	0.002%
27	5.800	688	691	693	rBV3	567	554	0.01%	0.003%
28	5.836	696	697	698	rBV	485	213	0.00%	0.001%
29	5.885	702	705	706	rBV2	377	361	0.00%	0.002%
30	6.050	729	732	733	rBV2	543	359	0.00%	0.002%
31	6.105	740	741	742	rBV	605	278	0.00%	0.001%
32	6.202	756	757	759	rBV	294	241	0.00%	0.001%
33	6.263	766	767	769	rBV	328	229	0.00%	0.001%
34	6.288	769	771	773	rBV2	286	253	0.00%	0.001%

Data Path : Z:\VOASRV\HPCHEM1\MSVOA W\DATA\VW082318\
 Data File : VW004918.D
 Acq On : 24 Aug 2018 01:33
 Operator : SY/AP
 Sample : J4628-12
 Misc : 7.08G/10ML/MSVOA W/SOIL
 ALS Vial : 1 Sample Multiplier: 1

Instrument :
 MSVOA_W
 ClientSampleId :
 DB3F7

Integration Parameters: LSCINT.P

Integrator: RTE
 Smoothing : OFF
 Sampling : 1
 Start Thrs: 0.2
 Stop Thrs : 0

Filtering: 5
 Min Area: 0 % of largest Peak
 Max Peaks: 100
 Peak Location: TOP

If leading or trailing edge < 100 prefer < Baseline drop else tangent >
 Peak separation: 5

Method : Z:\VOASRV\HPCHEM1\MSVOA_W\METHOD\SOM2WLM082218S.M
 Title : VOC Analysis

35	6.373	782	785	787	rBV3	148	189	0.00%	0.001%
36	6.452	796	798	800	rVB2	363	336	0.00%	0.002%
37	6.477	800	802	804	rBV3	449	490	0.01%	0.002%
38	6.592	819	821	822	rBV2	575	418	0.01%	0.002%
39	6.672	832	834	836	rVB2	368	280	0.00%	0.001%
40	6.690	836	837	839	rBV	631	276	0.00%	0.001%
41	6.733	842	844	846	rVB2	486	349	0.00%	0.002%
42	6.775	848	851	856	rVB4	525	728	0.01%	0.003%
43	6.830	858	860	864	rVB2	268	322	0.00%	0.001%
44	6.861	864	865	868	rBV2	325	384	0.00%	0.002%
45	6.940	875	878	879	rVB3	491	485	0.01%	0.002%
46	6.970	881	883	885	rBV2	427	445	0.01%	0.002%
47	7.007	887	889	892	rBV2	401	368	0.00%	0.002%
48	7.092	892	903	925	rBV2	48470	177023	2.19%	0.799%
49	7.501	969	970	972	rBV2	342	245	0.00%	0.001%
50	7.550	975	978	980	rVB3	630	668	0.01%	0.003%
51	7.659	984	996	1010	rBV	302874	753096	9.31%	3.399%
52	7.793	1015	1018	1021	rVB3	518	674	0.01%	0.003%
53	7.976	1046	1048	1049	rBV2	312	211	0.00%	0.001%
54	8.086	1064	1066	1068	rVB2	345	188	0.00%	0.001%
55	8.141	1073	1075	1079	rVB3	468	431	0.01%	0.002%
56	8.177	1079	1081	1083	rBV3	400	316	0.00%	0.001%
57	8.287	1088	1099	1115	rBV2	645806	1893133	23.40%	8.545%
58	8.543	1140	1141	1145	rBV2	318	400	0.00%	0.002%
59	8.580	1145	1147	1150	rVV2	635	495	0.01%	0.002%
60	8.635	1154	1156	1160	rVV2	930	946	0.01%	0.004%
61	8.683	1160	1164	1165	rVV3	738	1102	0.01%	0.005%
62	8.714	1167	1169	1174	rVB3	824	991	0.01%	0.004%
63	8.848	1181	1191	1208	rBV	596678	1210166	14.96%	5.462%
64	9.092	1224	1231	1235	rBV6	3246	8365	0.10%	0.038%
65	9.281	1253	1262	1278	rBV	406120	849104	10.49%	3.833%
66	9.622	1317	1318	1320	rBV	682	394	0.00%	0.002%
67	9.830	1349	1352	1353	rBV2	420	447	0.01%	0.002%
68	9.848	1353	1355	1357	rVV3	488	427	0.01%	0.002%
69	9.878	1359	1360	1363	rBV3	589	481	0.01%	0.002%
70	9.945	1367	1371	1372	rBV2	598	816	0.01%	0.004%
71	10.043	1378	1387	1398	rBV	181493	337462	4.17%	1.523%

Data Path : Z:\VOASRV\HPCHEM1\MSVOA W\DATA\VW082318\
 Data File : VW004918.D
 Acq On : 24 Aug 2018 01:33
 Operator : SY/AP
 Sample : J4628-12
 Misc : 7.08G/10ML/MSVOA W/SOIL
 ALS Vial : 1 Sample Multiplier: 1

Instrument :
 MSVOA_W
 ClientSampleId :
 DB3F7

Integration Parameters: LSCINT.P

Integrator: RTE
 Smoothing : OFF Filtering: 5
 Sampling : 1 Min Area: 0 % of largest Peak
 Start Thrs: 0.2 Max Peaks: 100
 Stop Thrs : 0 Peak Location: TOP

If leading or trailing edge < 100 prefer < Baseline drop else tangent >
 Peak separation: 5

Method : Z:\VOASRV\HPCHEM1\MSVOA_W\METHOD\SOM2WLM082218S.M
 Title : VOC Analysis

72	10.214	1412	1415	1416	rBV2	573	674	0.01%	0.003%
73	10.329	1426	1434	1455	rBV	984538	1762723	21.78%	7.956%
74	10.586	1469	1476	1483	rVB	133496	229463	2.84%	1.036%
75	10.750	1491	1503	1514	rVB3	37757	163173	2.02%	0.736%
76	10.933	1526	1533	1553	rBV	252499	485227	6.00%	2.190%
77	11.177	1571	1573	1574	rBV2	650	371	0.00%	0.002%
78	11.299	1591	1593	1594	rBV	465	352	0.00%	0.002%
79	11.378	1604	1606	1608	rVB2	656	410	0.01%	0.002%
80	11.402	1608	1610	1611	rBV2	770	529	0.01%	0.002%
81	11.463	1619	1620	1622	rBV2	396	283	0.00%	0.001%
82	11.488	1622	1624	1628	rVB4	653	365	0.00%	0.002%
83	11.518	1628	1629	1631	rBV	522	272	0.00%	0.001%
84	11.537	1631	1632	1636	rVB2	653	534	0.01%	0.002%
85	11.634	1639	1648	1660	rBV	890154	1542625	19.06%	6.963%
86	11.841	1677	1682	1687	rBV4	1315	2541	0.03%	0.011%
87	11.884	1687	1689	1692	rBV3	590	480	0.01%	0.002%
88	12.323	1760	1761	1766	rBV4	746	948	0.01%	0.004%
89	12.475	1782	1786	1792	rVB4	3029	4921	0.06%	0.022%
90	12.622	1804	1810	1816	rVB2	15881	28649	0.35%	0.129%
91	12.701	1816	1823	1830	rBV	402924	665634	8.23%	3.004%
92	12.841	1843	1846	1850	rVB3	1575	2051	0.03%	0.009%
93	12.908	1855	1857	1858	rBV	485	257	0.00%	0.001%
94	12.933	1858	1861	1862	rBV2	1513	1422	0.02%	0.006%
95	12.975	1865	1868	1872	rBV3	724	1145	0.01%	0.005%
96	13.030	1875	1877	1878	rBV3	384	239	0.00%	0.001%
97	13.451	1945	1946	1948	rBV2	522	492	0.01%	0.002%
98	13.481	1948	1951	1953	rBV3	1055	1355	0.02%	0.006%
99	13.567	1958	1965	1976	rVB	734167	1171811	14.48%	5.289%
100	13.859	2006	2013	2022	rBV	742214	1231044	15.21%	5.556%

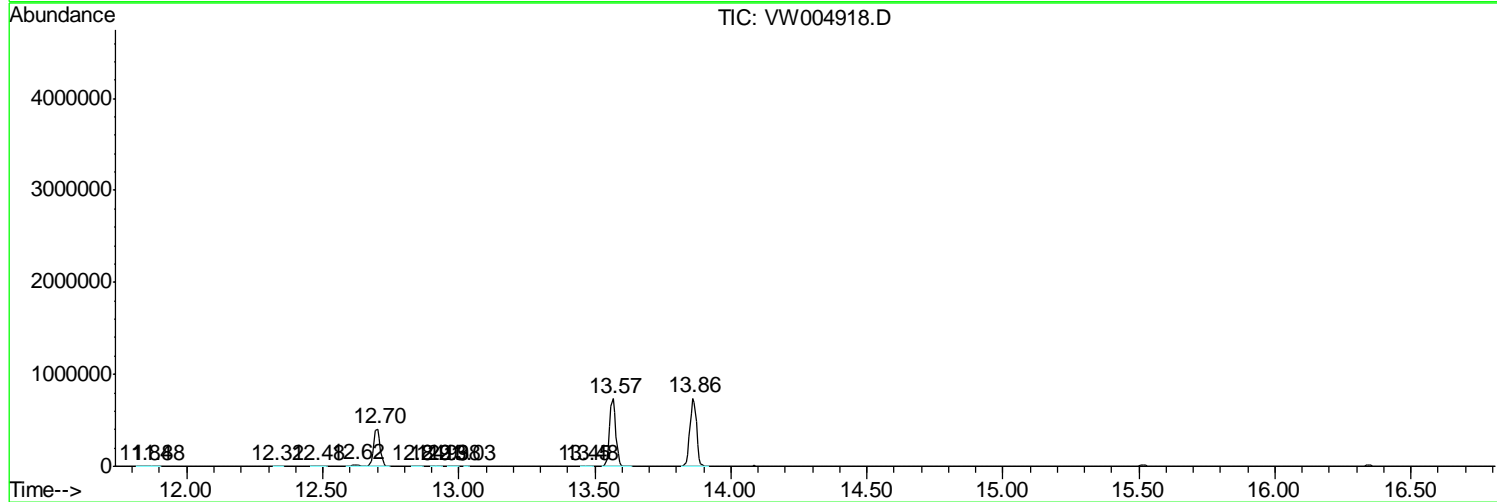
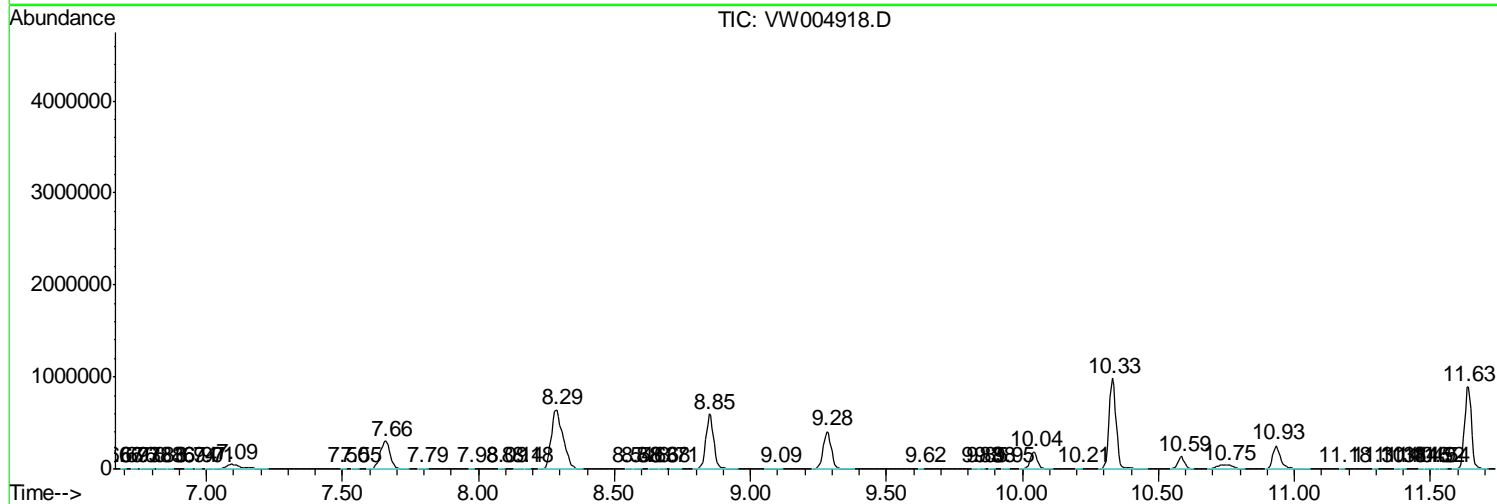
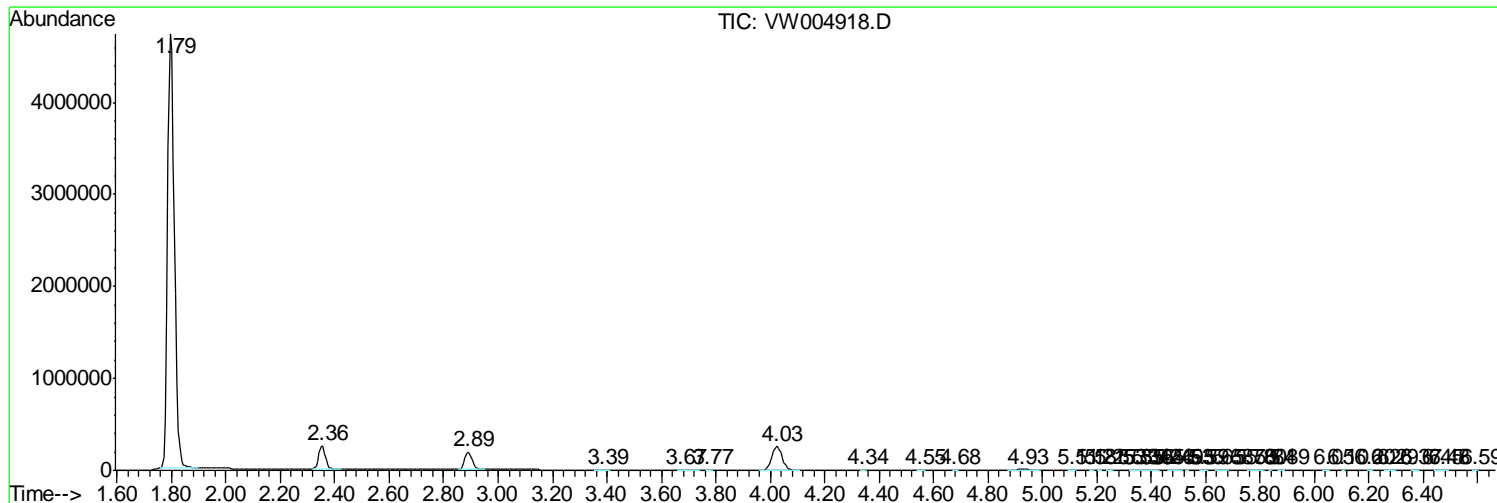
Sum of corrected areas: 22155256

Data Path : Z:\VOASRV\HPCHEM1\MSVOA W\DATA\VW082318\
 Data File : VW004918.D
 Acq On : 24 Aug 2018 01:33
 Operator : SY/AP
 Sample : J4628-12
 Misc : 7.08G/10ML/MSVOA W/SOIL
 ALS Vial : 1 Sample Multiplier: 1

Instrument :
 MSVOA_W
ClientSampled :
 DB3F7

Quant Method : Z:\VOASRV\HPCHEM1\MSVOA_W\METHOD\SOM2WLM082218S.M
 Quant Title : VOC Analysis

TIC Library : C:\DATABASE\NIST11.L
 TIC Integration Parameters: LSCINT.P



Data Path : Z:\VOASRV\HPCHEM1\MSVOA_W\DATA\VW082318\
Data File : VW004918.D
Acq On : 24 Aug 2018 01:33
Operator : SY/AP
Sample : J4628-12
Misc : 7.08G/10ML/MSVOA_W/SOIL
ALS Vial : 1 Sample Multiplier: 1

Instrument :
MSVOA_W
ClientSampleId :
DB3F7

Quant Method : Z:\VOASRV\HPCHEM1\MSVOA_W\METHOD\SOM2WLM082218S.M
Quant Title : VOC Analysis

TIC Library : C:\DATABASE\NIST11.L
TIC Integration Parameters: LSCINT.P

No Library Search Compounds Detected

Data Path : Z:\VOASRV\HPCHEM1\MSVOA_W\DATA\VW082318\
Data File : VW004918.D
Acq On : 24 Aug 2018 01:33
Operator : SY/AP
Sample : J4628-12
Misc : 7.08G/10ML/MSVOA_W/SOIL
ALS Vial : 1 Sample Multiplier: 1

Instrument :
MSVOA_W
ClientSampleId :
DB3F7

Quant Method : Z:\VOASRV\HPCHEM1\MSVOA_W\METHOD\SOM2WLM082218S.M
Quant Title : VOC Analysis

TIC Library : C:\DATABASE\NIST11.L
TIC Integration Parameters: LSCINT.P

TIC Top Hit name	RT	EstConc	Units	Response	--Internal Standard--			
					#	RT	Resp	Conc
