

Data Path : Z:\voasrv\HPCHEM1\MSVOA W\Data\VW082319\
 Data File : VW012148.D
 Acq On : 23 Aug 2019 21:59
 Operator : SY/VA
 Sample : K4474-11
 Misc : 5.95G/5ML/MSVOA W/SOIL
 ALS Vial : 27 Sample Multiplier: 1

Instrument :
 MSVOA_W
 ClientSampleId :
 T1-2-K1-(2.5)

Integration Parameters: RTEINT.P

Integrator: RTE
 Smoothing : ON Filtering: 5
 Sampling : 1 Min Area: 3 % of largest Peak
 Start Thrs: 0.2 Max Peaks: 100
 Stop Thrs : 0 Peak Location: TOP

If leading or trailing edge < 100 prefer < Baseline drop else tangent >
 Peak separation: 5

Method : Z:\VOASRV\HPCHEM1\MSVOA_W\METHOD\82W082319S.M
 Title : SW846 8260

Signal : TIC

peak #	R.T. min	first scan	max scan	last scan	PK TY	peak height	corr. area	corr. % max.	% of total
1	1.959	6	9	23	rVB2	7102	17987	1.41%	0.278%
2	2.148	36	40	46	rBV	11092	19416	1.52%	0.301%
3	4.915	481	494	512	rBV3	23028	82751	6.48%	1.281%
4	7.537	915	924	933	rBV3	5611	16421	1.29%	0.254%
5	7.884	968	981	986	rBV	165286	395602	30.99%	6.124%
6	7.945	986	991	1005	rVB	306073	665181	52.10%	10.298%
7	8.305	1039	1050	1061	rBV	185347	405495	31.76%	6.277%
8	8.842	1127	1138	1154	rBV	476110	944554	73.98%	14.623%
9	10.323	1372	1381	1391	rBV	734320	1276717	100.00%	19.765%
10	11.634	1586	1596	1608	rBV	604021	1034050	80.99%	16.008%
11	12.615	1746	1757	1769	rBV	448811	745067	58.36%	11.534%
12	13.560	1905	1912	1922	rVB	524321	856334	67.07%	13.257%

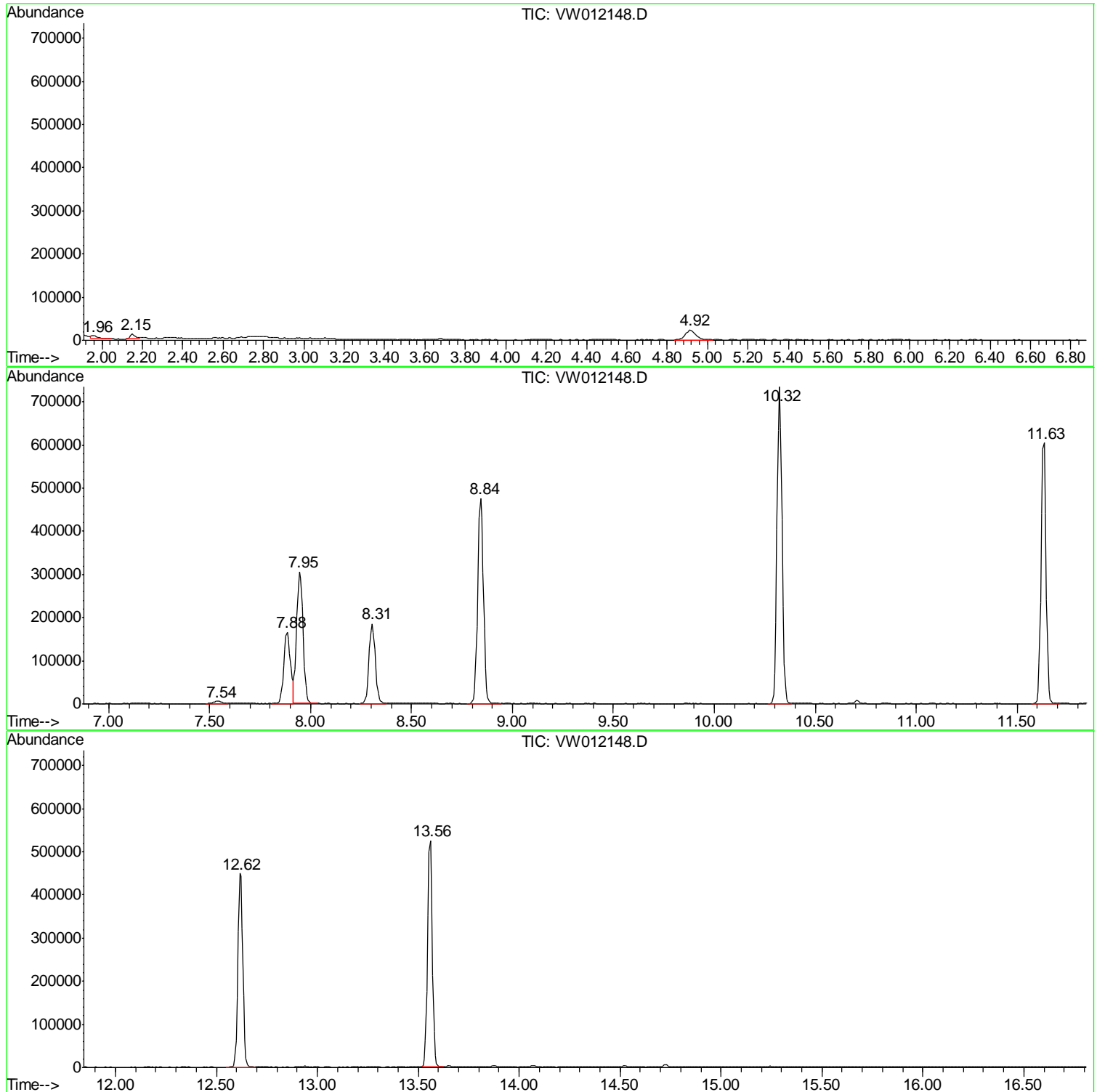
Sum of corrected areas: 6459575

Data Path : Z:\voasrv\HPCHEM1\MSVOA W\Data\VW082319\
Data File : VW012148.D
Acq On : 23 Aug 2019 21:59
Operator : SY/VA
Sample : K4474-11
Misc : 5.95G/5ML/MSVOA W/SOIL
ALS Vial : 27 Sample Multiplier: 1

Instrument :
MSVOA_W
ClientSampled :
T1-2-K1-(2.5)

Quant Method : Z:\VOASRV\HPCHEM1\MSVOA_W\METHOD\82W082319S.M
Quant Title : SW846 8260

TIC Library : C:\DATABASE\NIST11.L
TIC Integration Parameters: LSCINT.P



Data Path : Z:\voasrv\HPCHEM1\MSVOA_W\Data\VW082319\
Data File : VW012148.D
Acq On : 23 Aug 2019 21:59
Operator : SY/VA
Sample : K4474-11
Misc : 5.95G/5ML/MSVOA_W/SOIL
ALS Vial : 27 Sample Multiplier: 1

Instrument :
MSVOA_W
ClientSampleId :
T1-2-K1-(2.5)

Quant Method : Z:\VOASRV\HPCHEM1\MSVOA_W\METHOD\82W082319S.M
Quant Title : SW846 8260

TIC Library : C:\DATABASE\NIST11.L
TIC Integration Parameters: LSCINT.P

No Library Search Compounds Detected

Data Path : Z:\voasrv\HPCHEM1\MSVOA_W\Data\VW082319\
Data File : VW012148.D
Acq On : 23 Aug 2019 21:59
Operator : SY/VA
Sample : K4474-11
Misc : 5.95G/5ML/MSVOA_W/SOIL
ALS Vial : 27 Sample Multiplier: 1

Instrument :
MSVOA_W
ClientSampleId :
T1-2-K1-(2.5)

Quant Method : Z:\VOASRV\HPCHEM1\MSVOA_W\METHOD\82W082319S.M
Quant Title : SW846 8260

TIC Library : C:\DATABASE\NIST11.L
TIC Integration Parameters: LSCINT.P

TIC Top Hit name	RT	EstConc	Units	Response	--Internal Standard--			
					#	RT	Resp	Conc
