

Data Path : Z:\voasrv\HPCHEM1\MSVOA\_W\Data\VW082323\  
 Data File : VW026832.D  
 Acq On : 23 Aug 2023 22:09  
 Operator : SY/MD  
 Sample : 04138-02  
 Misc : 5.60g/10mL/MSVOA\_W/SOIL  
 ALS Vial : 1 Sample Multiplier: 1

Instrument :  
 MSVOA\_W  
 ClientSampleId :  
 DCHQ6

Integration Parameters: LSCINT.P

Integrator: RTE  
 Smoothing : OFF  
 Sampling : 1  
 Start Thrs : 0.2  
 Stop Thrs : 0

Filtering: 5  
 Min Area: 0 % of largest Peak  
 Max Peaks: 100  
 Peak Location: TOP

If leading or trailing edge < 100 prefer < Baseline drop else tangent >  
 Peak separation: 5

Method : Z:\voasrv\HPCHEM1\MSVOA\_W\Method\SFAMWLM081023SMA.M  
 Title : SFAM01.0

Signal : TIC: VW026832.D\data.ms

peak #	R.T. min	first scan	max scan	last scan	PK TY	peak height	corr. area	corr. % max.	% of total
1	2.156	41	44	49	rBV3	2063	3828	0.20%	0.026%
2	2.363	72	78	98	rBV	43556	138320	7.23%	0.955%
3	2.893	159	165	177	rBV	50453	140136	7.32%	0.967%
4	3.253	222	224	227	rBV4	983	969	0.05%	0.007%
5	3.290	228	230	232	rVB3	1157	845	0.04%	0.006%
6	3.375	242	244	247	rBV3	710	807	0.04%	0.006%
7	3.674	291	293	297	rVB4	787	1127	0.06%	0.008%
8	3.771	306	309	313	rVB4	792	1314	0.07%	0.009%
9	3.802	313	314	318	rBV3	817	803	0.04%	0.006%
10	4.027	338	351	377	rBV	135553	522747	27.32%	3.608%
11	4.387	403	410	411	rBV5	827	1786	0.09%	0.012%
12	4.430	414	417	420	rBV3	1123	1816	0.09%	0.013%
13	4.533	432	434	436	rBV3	1043	833	0.04%	0.006%
14	4.923	486	498	520	rBV3	40048	187783	9.82%	1.296%
15	5.265	551	554	558	rVB5	886	1260	0.07%	0.009%
16	5.338	565	566	571	rVB4	547	745	0.04%	0.005%
17	5.948	658	666	675	rVV6	4861	14486	0.76%	0.100%
18	6.143	694	698	701	rBV5	594	1142	0.06%	0.008%
19	6.216	707	710	714	rBV5	440	893	0.05%	0.006%
20	6.258	714	717	721	rVV5	656	827	0.04%	0.006%
21	6.307	721	725	727	rVV2	692	850	0.04%	0.006%
22	6.478	749	753	754	rBV2	706	905	0.05%	0.006%
23	6.923	822	826	829	rBV3	950	1409	0.07%	0.010%
24	6.978	834	835	839	rBV3	1028	1254	0.07%	0.009%
25	7.082	844	852	857	rBV	62205	173089	9.05%	1.195%
26	7.392	901	903	906	rBV3	708	758	0.04%	0.005%
27	7.502	919	921	925	rVV4	629	874	0.05%	0.006%
28	7.551	925	929	930	rVV3	797	1190	0.06%	0.008%
29	7.648	934	945	956	rVV	326915	820456	42.88%	5.663%
30	8.276	1033	1048	1065	rBV2	640914	1913161	100.00%	13.205%
31	8.624	1100	1105	1106	rBV3	812	1119	0.06%	0.008%
32	8.685	1111	1115	1118	rVB5	1269	1895	0.10%	0.013%
33	8.843	1132	1141	1158	rBV	673200	1358829	71.03%	9.379%
34	8.996	1164	1166	1169	rVB4	934	932	0.05%	0.006%
35	9.075	1172	1179	1180	rBV6	3223	5340	0.28%	0.037%
36	9.179	1194	1196	1198	rBV2	778	757	0.04%	0.005%

Data Path : Z:\voasrv\HPCHEM1\MSVOA\_W\Data\VW082323\  
 Data File : VW026832.D  
 Acq On : 23 Aug 2023 22:09  
 Operator : SY/MD  
 Sample : 04138-02  
 Misc : 5.60g/10mL/MSVOA\_W/SOIL  
 ALS Vial : 1 Sample Multiplier: 1

Instrument :  
 MSVOA\_W  
 ClientSampleId :  
 DCHQ6

Integration Parameters: LSCINT.P

Integrator: RTE  
 Smoothing : OFF  
 Sampling : 1  
 Start Thrs : 0.2  
 Stop Thrs : 0

Filtering: 5  
 Min Area: 0 % of largest Peak  
 Max Peaks: 100  
 Peak Location: TOP

If leading or trailing edge < 100 prefer < Baseline drop else tangent >  
 Peak separation: 5

Method : Z:\voasrv\HPCHEM1\MSVOA\_W\Method\SFAMWLM081023SMA.M  
 Title : SFAM01.0

37	9.276	1202	1212	1223	rBV	452474	936636	48.96%	6.465%
38	9.496	1245	1248	1251	rVB4	924	1231	0.06%	0.008%
39	9.636	1268	1271	1272	rBV2	972	870	0.05%	0.006%
40	9.666	1272	1276	1282	rVB5	2562	4486	0.23%	0.031%
41	9.874	1307	1310	1313	rVB5	1137	1605	0.08%	0.011%
42	9.916	1313	1317	1319	rBV4	836	913	0.05%	0.006%
43	10.032	1328	1336	1348	rBV	220524	412960	21.59%	2.850%
44	10.221	1365	1367	1374	rVB6	1244	2081	0.11%	0.014%
45	10.325	1374	1384	1400	rBV	837887	1493747	78.08%	10.310%
46	10.575	1418	1425	1437	rBV	153032	270465	14.14%	1.867%
47	10.697	1439	1445	1457	rVB3	29131	56222	2.94%	0.388%
48	10.861	1466	1472	1477	rBV2	41925	72081	3.77%	0.498%
49	10.922	1477	1482	1497	rVV	169338	300410	15.70%	2.073%
50	11.063	1500	1505	1514	rVB	22695	41304	2.16%	0.285%
51	11.300	1542	1544	1547	rVV4	894	912	0.05%	0.006%
52	11.398	1557	1560	1562	rBV4	929	1092	0.06%	0.008%
53	11.434	1562	1566	1571	rVB4	3742	6578	0.34%	0.045%
54	11.501	1575	1577	1578	rBV2	1045	878	0.05%	0.006%
55	11.562	1586	1587	1590	rBV3	760	737	0.04%	0.005%
56	11.629	1590	1598	1608	rBV	1009563	1682024	87.92%	11.610%
57	11.837	1630	1632	1634	rBV2	862	751	0.04%	0.005%
58	11.910	1642	1644	1646	rBV2	930	845	0.04%	0.006%
59	11.977	1653	1655	1657	rBV3	962	1184	0.06%	0.008%
60	12.056	1665	1668	1669	rBV3	764	955	0.05%	0.007%
61	12.105	1674	1676	1679	rBV3	749	783	0.04%	0.005%
62	12.166	1683	1686	1687	rBV4	1210	1528	0.08%	0.011%
63	12.294	1704	1707	1708	rBV3	766	857	0.04%	0.006%
64	12.349	1713	1716	1719	rBV5	1118	1759	0.09%	0.012%
65	12.605	1750	1758	1764	rBV2	29277	55182	2.88%	0.381%
66	12.690	1764	1772	1779	rBV	428281	710266	37.13%	4.902%
67	12.885	1801	1804	1808	rVV6	1820	3491	0.18%	0.024%
68	12.928	1808	1811	1820	rVB8	4486	10097	0.53%	0.070%
69	13.038	1826	1829	1831	rVB4	1632	1794	0.09%	0.012%
70	13.068	1831	1834	1838	rBV5	1454	2402	0.13%	0.017%
71	13.196	1853	1855	1857	rVV3	731	736	0.04%	0.005%
72	13.251	1859	1864	1865	rVV5	3245	5205	0.27%	0.036%
73	13.288	1868	1870	1879	rVB6	4377	6202	0.32%	0.043%
74	13.391	1885	1887	1895	rVB7	1730	3040	0.16%	0.021%
75	13.471	1898	1900	1902	rBV2	1764	1796	0.09%	0.012%
76	13.556	1907	1914	1925	rBV	1057228	1667348	87.15%	11.508%

Data Path : Z:\voasrv\HPCHEM1\MSVOA\_W\Data\VW082323\  
 Data File : VW026832.D  
 Acq On : 23 Aug 2023 22:09  
 Operator : SY/MD  
 Sample : 04138-02  
 Misc : 5.60g/10mL/MSVOA\_W/SOIL  
 ALS Vial : 1 Sample Multiplier: 1

Instrument :  
 MSVOA\_W  
 ClientSampleId :  
 DCHQ6

Integration Parameters: LSCINT.P

Integrator: RTE  
 Smoothing : OFF                   Filtering: 5  
 Sampling : 1                      Min Area: 0 % of largest Peak  
 Start Thrs: 0.2                   Max Peaks: 100  
 Stop Thrs : 0                     Peak Location: TOP

If leading or trailing edge < 100 prefer < Baseline drop else tangent >  
 Peak separation: 5

Method : Z:\voasrv\HPCHEM1\MSVOA\_W\Method\SFAMWLM081023SMA.M  
 Title : SFAM01.0

77	13.849	1955	1962	1975	rBV	807069	1329757	69.51%	9.178%
78	14.007	1986	1988	1992	rBV5	1824	2255	0.12%	0.016%
79	14.062	1992	1997	2003	rVB2	9877	17775	0.93%	0.123%
80	14.190	2014	2018	2019	rVV4	1270	1286	0.07%	0.009%
81	14.318	2034	2039	2043	rBV7	4160	6907	0.36%	0.048%
82	14.422	2054	2056	2058	rBV3	852	886	0.05%	0.006%
83	14.568	2078	2080	2083	rBV4	1166	1106	0.06%	0.008%
84	14.623	2084	2089	2094	rVV7	3514	5992	0.31%	0.041%
85	14.672	2095	2097	2098	rVV2	1136	798	0.04%	0.006%
86	14.714	2101	2104	2111	rVB8	3739	6452	0.34%	0.045%
87	14.769	2111	2113	2114	rBV2	1038	785	0.04%	0.005%
88	14.909	2135	2136	2140	rBV4	798	1160	0.06%	0.008%
89	15.092	2162	2166	2169	rBV6	1605	2554	0.13%	0.018%
90	15.123	2169	2171	2176	rVV5	2117	2200	0.11%	0.015%
91	15.178	2176	2180	2183	rVV6	1873	3060	0.16%	0.021%
92	15.367	2205	2211	2213	rBV6	2003	3497	0.18%	0.024%
93	15.428	2217	2221	2226	rVB3	10715	17591	0.92%	0.121%
94	15.757	2271	2275	2279	rBV5	3003	6775	0.35%	0.047%
95	15.885	2294	2296	2300	rVB5	1630	1666	0.09%	0.011%
96	16.214	2348	2350	2353	rBV4	1380	1239	0.06%	0.009%
97	16.312	2364	2366	2369	rBV4	1172	1329	0.07%	0.009%
98	16.458	2388	2390	2391	rBV2	1440	890	0.05%	0.006%
99	16.525	2399	2401	2402	rBV2	1219	905	0.05%	0.006%
100	16.714	2429	2432	2436	rBV5	1575	2491	0.13%	0.017%

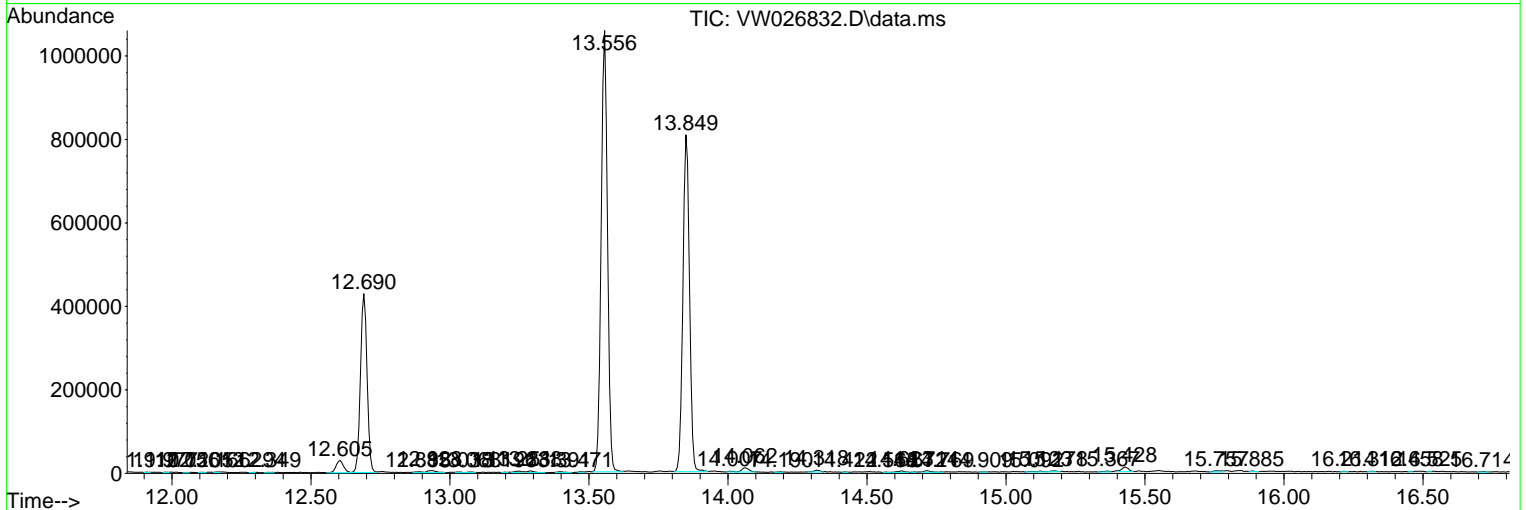
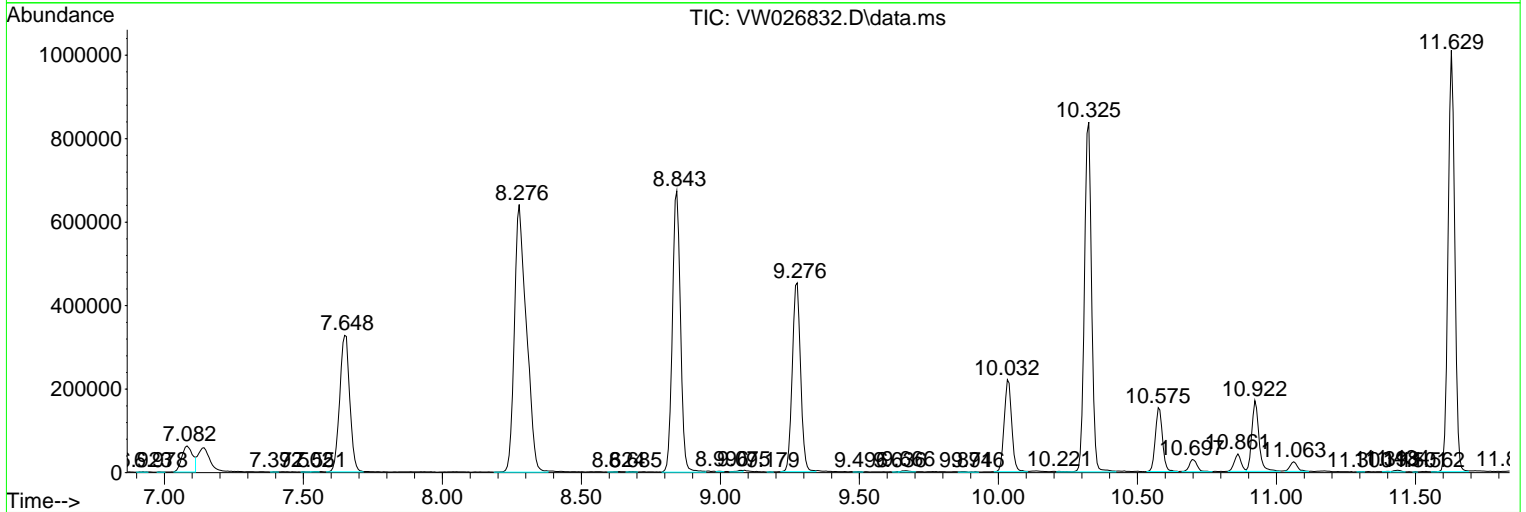
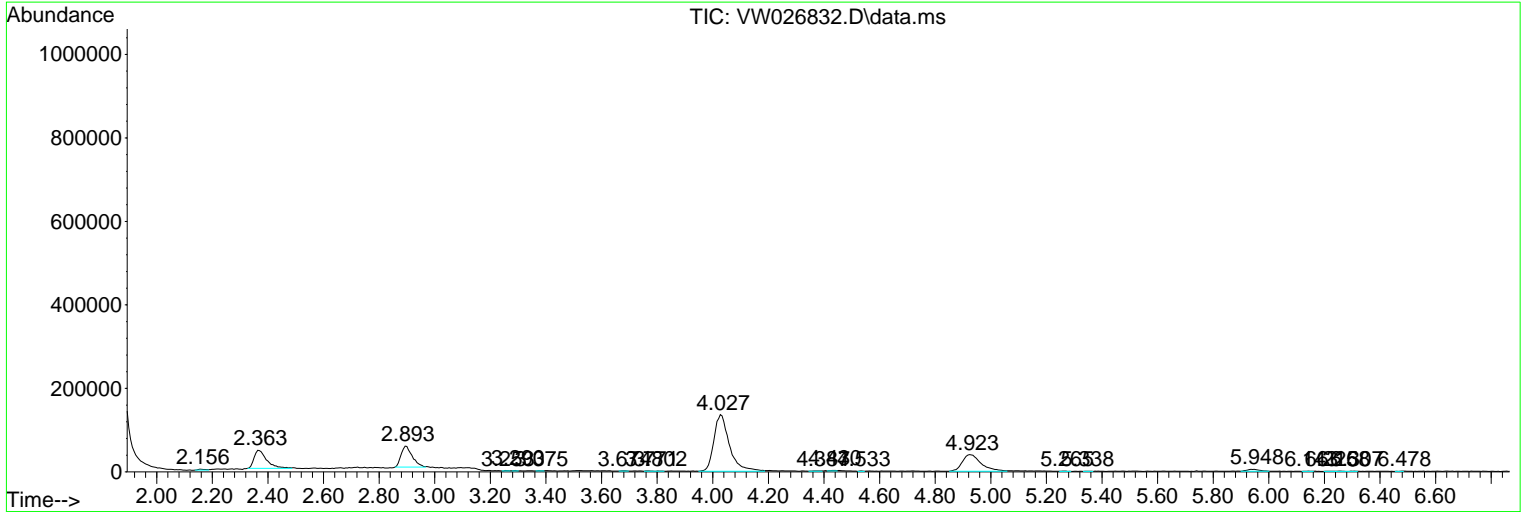
Sum of corrected areas: 14488094

Data Path : Z:\voasrv\HPCHEM1\MSVOA\_W\Data\VW082323\  
 Data File : VW026832.D  
 Acq On : 23 Aug 2023 22:09  
 Operator : SY/MD  
 Sample : 04138-02  
 Misc : 5.60g/10mL/MSVOA\_W/SOIL  
 ALS Vial : 1 Sample Multiplier: 1

Instrument :  
 MSVOA\_W  
 ClientSampleId :  
 DCHQ6

Quant Method : Z:\voasrv\HPCHEM1\MSVOA\_W\Method\SFAMWLM081023SMA.M  
 Quant Title : SFAM01.0

TIC Library : C:\Database\NIST20.L  
 TIC Integration Parameters: LSCINT.P



Library Search Compound Report

Data Path : Z:\voasrv\HPCHEM1\MSVOA\_W\Data\VW082323\  
Data File : VW026832.D  
Acq On : 23 Aug 2023 22:09  
Operator : SY/MD  
Sample : 04138-02  
Misc : 5.60g/10mL/MSVOA\_W/SOIL  
ALS Vial : 1 Sample Multiplier: 1

Instrument :  
MSVOA\_W  
ClientSampleId :  
DCHQ6

Quant Method : Z:\voasrv\HPCHEM1\MSVOA\_W\Method\SFAMWLM081023SMA.M  
Quant Title : SFAM01.0

TIC Library : C:\Database\NIST20.L  
TIC Integration Parameters: LSCINT.P

No Library Search Compounds Detected

\*\*\*\*\*

Data Path : Z:\voasrv\HPCHEM1\MSVOA\_W\Data\VW082323\  
Data File : VW026832.D  
Acq On : 23 Aug 2023 22:09  
Operator : SY/MD  
Sample : 04138-02  
Misc : 5.60g/10mL/MSVOA\_W/SOIL  
ALS Vial : 1 Sample Multiplier: 1

Instrument :  
MSVOA\_W  
ClientSampleId :  
DCHQ6

Quant Method : Z:\voasrv\HPCHEM1\MSVOA\_W\Method\SFAMWLM081023SMA.M  
Quant Title : SFAM01.0

TIC Library : C:\Database\NIST0.L  
TIC Integration Parameters: LSCINT.P

TIC Top Hit name	RT	EstConc	Units	Response	--Internal Standard--			
					#	RT	Resp	Conc

---