

Data Path : Z:\VOASRV\HPCHEM1\MSVOA W\DATA\VW082620\  
 Data File : VW016371.D  
 Acq On : 26 Aug 2020 16:46  
 Operator : SY/VA  
 Sample : L3807-16  
 Misc : 6.41G/10ML/MSVOA W/SOIL  
 ALS Vial : 20 Sample Multiplier: 1

Instrument :  
 MSVOA\_W  
 ClientSampleId :  
 BFWR2

Quant Time: Aug 27 04:24:27 2020  
 Quant Method : Z:\VOASRV\HPCHEM1\MSVOA\_W\METHOD\SOM2WLM082420S.M  
 Quant Title : VOC Analysis  
 QLast Update : Thu Aug 27 02:40:32 2020  
 Response via : Initial Calibration

Internal Standards	R.T.	QIon	Response	Conc	Units	Dev(Min)
1) 1,4-Difluorobenzene	8.85	114	308772	25.00	ug/L	0.00
28) Chlorobenzene-d5	11.63	117	283314	25.00	ug/L	0.00
60) 1,4-Dichlorobenzene-d4	13.56	152	128655	25.00	ug/L	0.00

System Monitoring Compounds

4) Vinyl Chloride-d3	2.35	65	48555	14.73	ug/L	0.00
Spiked Amount	25.000	Range	30 - 150	Recovery	=	58.92%
7) Chloroethane-d5	2.89	69	44026	17.59	ug/L	0.00
Spiked Amount	25.000	Range	30 - 150	Recovery	=	70.36%
10) 1,1-Dichloroethene-d2	4.02	63	103396	13.20	ug/L	0.00
Spiked Amount	25.000	Range	45 - 110	Recovery	=	52.80%
20) 2-Butanone-d5	7.09	46	33769	36.02	ug/L	0.00
Spiked Amount	50.000	Range	20 - 135	Recovery	=	72.04%
24) Chloroform-d	7.65	84	171587	21.32	ug/L	0.00
Spiked Amount	25.000	Range	40 - 150	Recovery	=	85.28%
26) 1,2-Dichloroethane-d4	8.31	65	84792	20.44	ug/L	0.00
Spiked Amount	25.000	Range	70 - 130	Recovery	=	81.76%
29) Benzene-d6	8.27	84	316596	20.01	ug/L	0.00
Spiked Amount	25.000	Range	20 - 135	Recovery	=	80.04%
33) 1,2-Dichloropropane-d6	9.27	67	91968	21.01	ug/L	0.00
Spiked Amount	25.000	Range	70 - 120	Recovery	=	84.04%
37) Toluene-d8	10.33	98	295608	19.81	ug/L	0.00
Spiked Amount	25.000	Range	30 - 130	Recovery	=	79.24%
38) trans-1,3-Dichloropropene-	10.58	79	39984	18.93	ug/L	0.00
Spiked Amount	25.000	Range	30 - 135	Recovery	=	75.72%
39) 2-Hexanone-d5	10.93	63	29001	41.36	ug/L	0.00
Spiked Amount	50.000	Range	20 - 135	Recovery	=	82.72%
48) 1,1,2,2-Tetrachloroethane-	12.69	84	75198	20.64	ug/L	0.00
Spiked Amount	25.000	Range	45 - 120	Recovery	=	82.56%
61) 1,2-Dichlorobenzene-d4	13.85	152	103252	20.93	ug/L	0.00
Spiked Amount	25.000	Range	75 - 120	Recovery	=	83.72%

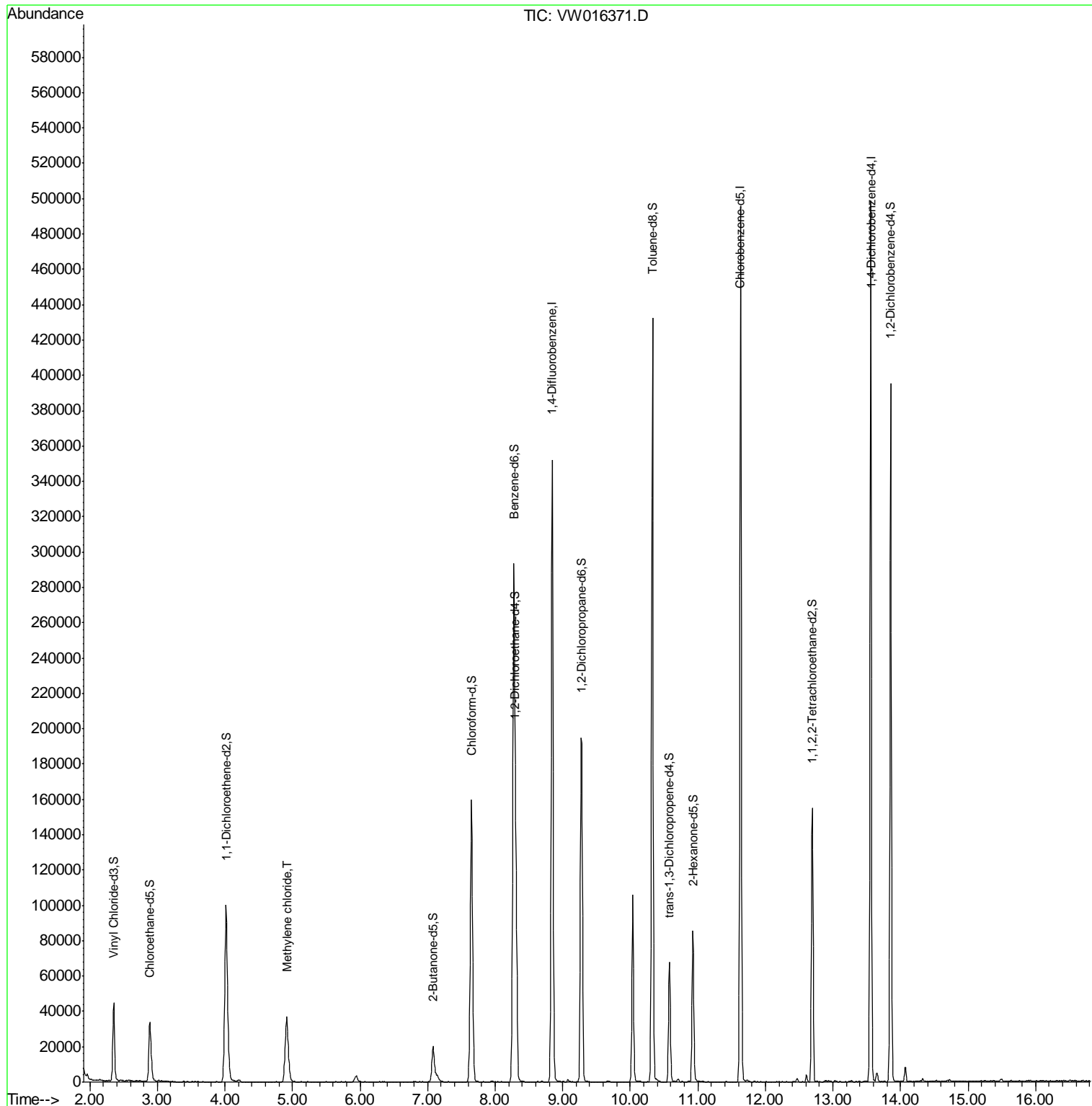
Target Compounds					Ovalue
16) Methylene chloride	4.92	84	31392	5.500 ug/L	94

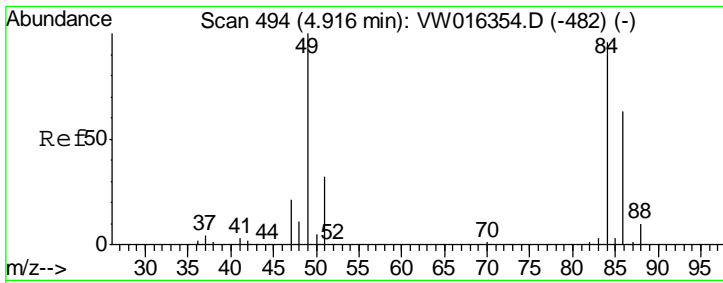
(#) = qualifier out of range (m) = manual integration (+) = signals summed

Data Path : Z:\VOASRV\HPCHEM1\MSVOA W\DATA\VW082620\  
 Data File : VW016371.D  
 Acq On : 26 Aug 2020 16:46  
 Operator : SY/VA  
 Sample : L3807-16  
 Misc : 6.41G/10ML/MSVOA W/SOIL  
 ALS Vial : 20 Sample Multiplier: 1

Instrument :  
 MSVOA\_W  
 Client Sampled :  
 BFWR2

Quant Time: Aug 27 04:24:27 2020  
 Quant Method : Z:\VOASRV\HPCHEM1\MSVOA\_W\METHOD\SOM2WLM082420S.M  
 Quant Title : VOC Analysis  
 QLast Update : Thu Aug 27 02:40:32 2020  
 Response via : Initial Calibration





#16  
 Methylene chloride  
 Concen: 5.500 ug/L  
 RT: 4.92 min Scan# 494  
 Delta R.T. -0.00 min  
 Lab File: VW016371.D  
 Acq: 26 Aug 2020 16:46

**Instrument :**  
 MSVOA\_W  
**ClientSampled :**  
 BFWR2

Tot Ion: 84 Resp: 31392

Ion	Ratio	Lower	Upper
84	100		
49	105.4	75.3	139.9
86	71.4	43.3	80.3

